



THE BLOOMINGDALE GAZETTE

VOLUME XXXIV  ISSUE 7  JULY 2014  www.BloomingtondaleHOA.com

CAN-DO SETTLES

Staff Report

COMMUNITY URGED TO CONTINUE SUPPORT AND INVOLVEMENT



Fred Brown (CAN-DO) and George May (President, BHA) discuss how the Bloomingdale Homeowners Association can continue to support CAN-DO and the community as development plans move forward.

On Wednesday, June 11 CAN-DO's Steering Committee met with BHA president George May, BHA Secretary Daniel Berkowitz and other select Bloomingdale area HOA representatives to provide an update on the Big Box development status.

Because of his role in the lawsuit, CAN-DO President Fred Brown was unable to share detailed



information from the initial mediation meeting, which took place the first week in June; however, those assembled engaged in a spirited discussion of current conditions. CAN-DO's attorney was able to answer many questions on the status of the lawsuit and provided solid insight and advice. For the initial round of mediation Brown and CAN-DO's attorney went before a judge as did three attorneys from Redcast and two representing Hillsborough County. Though the CAN-DO Attorney was outnumbered five-to-one, she held her own. In the end, no concessions were made and no decisions were handed down.

During the June 16 mediation meeting Brown and the CAN-DO Board requested before the judge that Redcast return to the original plan presented by the developers (a plan similar in style to Winthrop). According to a follow-up press release, CAN-DO concluded mediation with Red Cast LLC and Hillsborough County and signed a mediation agreement. Because mediation is a confidential legal process, the organization is bound by Florida law not to discuss the proceedings or the results. In general, representatives from the organization shared that some concessions were achieved, and some were not; however, no specifics were forthcoming.

CAN-DO'S OFFICIAL STATEMENT:

In joining Plaintiff Fred Brown, Bloomingdale CAN-DO and its officers have resolved all claims against Hillsborough County and developer Red Cast Bloomingdale LLC. After several rounds of meetings with representatives from Red Cast Bloomingdale LLC and Hillsborough County, Mr. Brown and the officers of Can-Do acknowledge that the project has the potential to enhance the neighborhood and surrounding community. The developer has shown a willingness to cooperate and listen to the community's concerns.

WHAT'S NEXT?

According to Brown, CAN-DO is planning to meet and finalize the agreement with the developer and then hold a community meeting. The BHA applauds the efforts of CAN-DO and the courageous officers who brought the fight to the county and developers at their personal expense of time and money.

Continued on Page 13

This Month

COMMUNITY CALENDER
Page 2

NEW BHA WEBSITE
LAUNCHED
Page 4

LIBRARY HAPPENINGS
Page 5

INs & OUTs
Page 6

NEIGHBORHOOD RIBBON
CUTTING
Page 8

BHA COMMUNITY CORNER
Page 10

DINING WITH DAVE
Page 16

REAL ESTATE UPDATE
Page 17

SCHOOL NEWS
Page 20

PLEASE  RECYCLE



QUOTE OF THE MONTH

A real patriot is the fellow who gets a parking ticket and rejoices that the system works. *Bill Vaughan*

JULY COMMUNITY CALENDAR

Wawa Grand Opening / Doors open at 8 a.m.; Ribbon Cutting at 10 a.m. / July 10 / 2224 Bloomingdale Ave. / The wait is over! The newest Wawa will open on July 10 to the Bloomingdale/Valrico community as the company celebrates its 50th year.

Godspell / Music Showcase / 402 Oakfield Drive, Brandon / The Florida Academy of Performing Arts Showcase Players present Godspell, a production of the Musical Theatre program at FAOPA. Ticket price: \$7. For more information visit www.faopa.org.

Performance dates:

July 11, 2014, at 6:00 p.m.

July 12, 2014 at 2:00 p.m. and 6 p.m.

July 13, 2014 at 2:00 p.m.

Brobee from Yo Gabba Gabba Meet and Greet / July 19 / Brandon Town Center / Attention kids! Brobee from Yo Gabba Gabba visits Westfield Brandon! Don't forget to bring your cameras for a photo opportunity with Brobee himself! Located in front of Dick's Sporting Goods. Schedule: 2-2:30 p.m., 3-3:30 p.m., 4-4:30 p.m., 5-5:30 p.m.

Invention Movie Matinee / July 26 / 2-4 p.m. / Bloomingdale Regional Public Library / 1906 Bloomingdale Ave. / Come see Meet the Robinsons! A brilliant inventor is whisked away in a time machine to help find a mysterious man in a bowler hat. The mysterious man is determined to destroy the world. It is up to the inventor to fix the time machine and save the world. Call 813-273-3652 for more information.

Back to School Festival / July 27 / 1-4 p.m. / Campo Family YMCA / 3414 Culbreath Road / Benefitting the YMCA Backpack Program, the 12th Annual Back to School Festival features over 100 indoor vendors, music, and entertainment. Entry fee per family: bring \$10 worth of school supplies or a \$10 cash donation to be donated to the backpack program. Call Marie Gilmore at 813-657-2418 for more information.

UPCOMING & ONGOING

Bloomingdale Yoga in the Park / Ongoing Saturdays / 8:30-9:30 a.m. / Free yoga class for Bloomingdale residents held at private park at the end of Culbreath Road. For more information contact Dina White at 813-509-7780 or dmwhite86@gmail.com.

Campo Family YMCA Summer Camps / Ongoing / Campo Family YMCA / 3414 Culbreath Road / Sign your kids up for their best summer yet. Camp options for all ages including our traditional

day camp, Leaders In Training Camp, a variety of half day specialty camps, and new this year, our FULL DAY SUPER SPORTS CAMP! With more space available, more field trips, water days, fun Fridays, guest speakers and more, Campo Summer Camp is the place to be this summer. So what are you waiting for? Sign up today! For more information call the Campo Y at 684-1371.

Summer Power Math Workouts / Ongoing through September 30 / Mathnasium / 1048 Bloomingdale Avenue, Brandon / At Mathnasium, summer programs are all about preventing summer learning loss and helping students prepare for what lies ahead. For some students, that means a solid review of previous material. Others benefit from previewing upcoming concepts. Most students will get some of both. For more information call 813-655-MATH (6284), e-mail brandon@mathnasium.com, or visit www.mathnasium.com/brandon.

The Dance Center Schedule of Summer Classes / Ongoing / The Dance Center of Brandon / 161 E. Bloomingdale Ave., Brandon / Summer is a great way for you or your dancer to work on technique and artistry and to increase your knowledge of advanced dance steps. Dancers may start their new dance level in the summer program. Camps and workshops are for students ages 3 and up. Keep refining your skills and having fun all summer! July Evening Intensives, Summer Ballet Camps, Summer Acrobatics Camp, and July Ballerina Princess Camp. Please see our website www.brandondance.com for specific dates and times or call the front desk at (813) 684-4282 for more information. A schedule can also be picked up at the front desk. Registration is ongoing.

Flat Andy Photo Contest / Until October 1 / Bloomingdale Library (or any Hillsborough County Public Library) / Bloomingdale Regional Public Library / 1906 Bloomingdale Ave. / Representing Andrew Carnegie's role in the history of libraries, Flat Andy is the mascot of Hillsborough County Public Libraries' Centennial Celebration. Choose the appropriate Flat Andy (Adult version for ages 18 and up, or Youth version for 17 and under). Print and follow directions for cutting him out and getting him started on his journey: Take Flat Andy with you as you travel and submit photos of his visits to public libraries. Or choose to send Flat Andy on vacation to visit a friend or relative who can snap photos of him at a public library. Photos from registered entrants may be emailed directly to: FlatAndy@hillsboroughcounty.org or dropped off at Bloomingdale Library. Entries must be received no later than October 1, 2014. Grand prize: \$500! Visit centennial.hcplc.org for more information.

PLEASE CHECK THE BHA COMMUNITY CORNER FOR ACTIVITIES AND EVENTS RIGHT HERE IN OUR COMMUNITY



YOUR INSIDE CONNECTIONS

Bloomingdale Homeowners Association, Inc.

3509 Bell Shoals Road - Valrico, Florida 33596 - (813) 681-2051

Email: BloomingdaleHomeowners@gmail.com

Website: www.BloomingdaleHOA.com

BHA Board meetings are held the second Tuesday of each month at the Offices of Bloomingdale Special Taxing District:

3509 Bell Shoals Road

Valrico, Florida 33596

Directors at Large:

President: *George T. May IV*

Treasurer: *Dennis Osborn*

Secretary: *Daniel Berkowitz*

Billy Hightower

Mary Galin

Dina White

Amy Luhmann

Joanie Wilson

Ken Smith

Beth Smedley

YOUR COMMUNITY NEWSPAPER



SUZANNE JONES

Editor - The Bloomingdale Gazette

P.O. Box 7221

Brandon, Florida 33508 - (813) 681-2051

Email: InBloomingdaleNews@gmail.com

Website: www.BloomingdaleGazette.com



TONY DEL CASTILLO

General Manager

Brandon & Southshore Times

11268 Winthrop Main Street, Suite 101

Riverview, Florida 33578 - (813) 661-2438

Email: tdelcastillo@tampabay.com



**Tampa Bay Times
Community
Development
Team**

The official publication of the BHA since 1980

The Gazette is delivered free to Bloomingdale residents on the first Saturday of each month.

PET GOT ISSUES?

**Allergies? Overweight? Diabetes? Itchy Skin?
Chronic Ear Infections?**

It Is Amazing What You Can
Fix & Prevent With The Proper Diet!

- Over 20 Brands of Natural/Holistic Dog & Cat Foods
- Frozen Raw Diets
- Huge Selection of Natural Treats & Chews
- Holistic Homeopathic Remedies & Supplements
- Huge Selection of Dog/Cat Supplies
- Friendly, Knowledgeable Pet Care & Nutrition Consultants
- Free Samples of Healthy Foods & Treats



Mon - Fri 10am - 7pm, Sat 10am - 6pm

813.651.0842



5620 FishHawk Crossing Blvd.

Located in the FishHawk Ranch Publix Shopping Center

www.doggoneholistic.biz



DR. ROBERT A. NORMAN, DO, MPH, MBA

CERTIFIED DERMATOLOGIST

- * FREE Skin Screenings
- * Diagnosis & Treatment for skin cancer
- * Non-Surgical Treatment for skin cancer
- * Treatment for Psoriasis, Eczema
- * Treatment for Acne, Scarring & Fine Lines
- * Chemical Peels & Facial Products
- * Botox, Restylane & Latisse

Same Day Appointments
Accepting MOST Insurances

CALL TODAY!

813.880.SKIN (7546)

800.488.7336

Tampa 8002 Gunn Hwy. Riverview 10422 U.S. Hwy. 301

www.drrobertnorman.com



NEW BLOOMINGDALE HOMEOWNERS INFORMATION WEBSITE LAUNCHED DOMAIN NAME HAS CHANGED TO WWW.BLOOMINGDALE.HOA.COM

By: Joy Boisselle

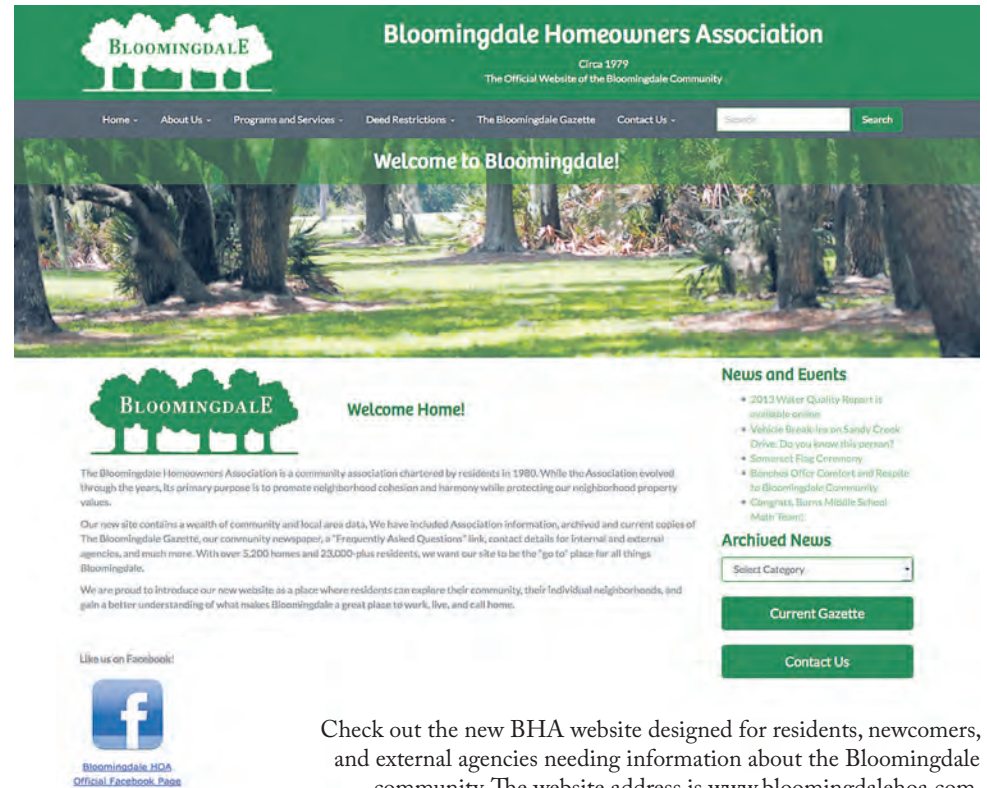
Continuously updating, evolving, and improving are goals good organizations strive to achieve. The Bloomingdale Homeowners Association (BHA) has been actively pursuing these goals through a variety of avenues designed to promote better communications between the board, residents, and those that interact with the community. The latest effort in that ongoing pursuit was the launch on June 7 of the community's new website at www.bloomingtondalehoa.com.

Active since 2000, the website (formerly www.bloomingtondalegazette.com) was in need of a complete overhaul, which it received from a new designer in the form of a new domain name, added functionality, added photos for visual appeal, and an emphasis on being user-friendly. The primary goal was to design a "go-to" site for all things Bloomingdale. "As we move further into the 21st century, we must use all means available to reach out and appeal to all generations. A strong internet presence is a must," explained George May, BHA President.

The new website adds an extra dimension to the Association's communication abilities which include the award-winning Bloomingdale Gazette, the monthly newspaper, and the Bloomingdale HOA Facebook page. Of this tangible membership benefit, May said, "Our new website is a huge tool in improving communications and services to our community. It provides instant news and access to community news, alerts, and events."

Via the website, residents and visitors can view comprehensive information about the community's history, the BHA, current news and announcements, deed restriction documents and the various programs and services offered. The Bloomingdale Gazette is now online, in both current and archived editions, which further helps to bridge the news gap between monthly publication dates. Residents can also sign up for email alerts and pay membership dues online through PayPal.

What's more, contacting the Association has never been easier. Multiple links exist to take the viewer to a comprehensive contact form, which allows users to cite deed restriction issues, contact the Gazette Editor, sign-up for email alerts, and more.



Check out the new BHA website designed for residents, newcomers, and external agencies needing information about the Bloomingdale community. The website address is www.bloomingtondalehoa.com.

BHA Secretary Dann Berkowitz said, "As more and more of our lives and access to information have moved to the digital realm, it is important for the BHA to enhance our presence and resources on the web." However, he added, "The BHA will always maintain the 'human touch' through open meetings and a staffed office."

With an eye towards constantly improving, President May concluded, "This is a great first step in the right direction. But, here is where we need user support. Make suggestions. Let us know if we are missing information you want to see included. With resident input, it can help us to make the site even better."

BHA WEB DESIGNER HAS BLOOMINGDALE TIES

By: Joy Boisselle

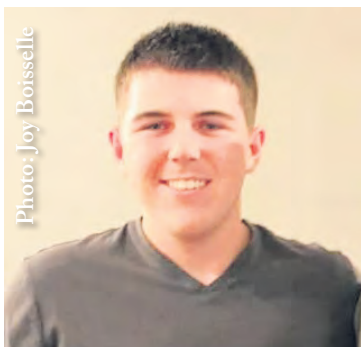


Photo: Joy Boisselle

Chris Mayhew, former Bloomingdale resident and 2011 Bloomingdale High School graduate, is the web designer and host of the BHA's new website at www.BloomingtondaleHOA.com.

in 2008 created his web design business. His own business page at www.mayhewdesign.com provides comprehensive information about his services, including design, development, hosting and maintenance.

While the BHA provided the vision and parameters for its new website, the needed technology and creative input was the work of 21-year-old web designer, Chris Mayhew, of Mayhew's Designs. Supporting local businesses and the community's schools has always been a priority for the Association. Mayhew fit the bill on both accounts as he is a former resident of Fairway Manors and a 2011 graduate of Bloomingdale High School.

While a sophomore at Bloomingdale High School, Mayhew created his first web page for his art teacher. A member of the school's Future Business Leaders of America, he took his new self-taught skill to the next level and

A savvy businessman, Mayhew offers non-profit agencies reduced pricing options. "Having volunteered with non-profits, I saw this as a way for them to be able to use more of their money on their causes rather than paying a large amount for a webpage." With most of his business received by word-of-mouth from satisfied customers, his diverse portfolio includes web pages for Apollo Pools, the Bloomingdale High School Orchestra, St. Stephens Catholic Church Spring Jubilee, and the League of Women Voters of Hillsborough County.

Juggling the business and his education has not been easy. However, as he enters his senior year as a Computer Science Major at the University of Central Florida, he credits the business with helping to pay for his education, and more importantly, honing his skills for the future. His long-term goals include working more in the computer coding world and with app development.

His advice for budding entrepreneurs: "Be honest in what you can do and provide, don't make promises you can't keep, and make sure you can deliver." Judging from the positive feedback received from residents on the new BHA website, Mayhew has delivered what he promised.

LIBRARY HAPPENINGS IN JULY

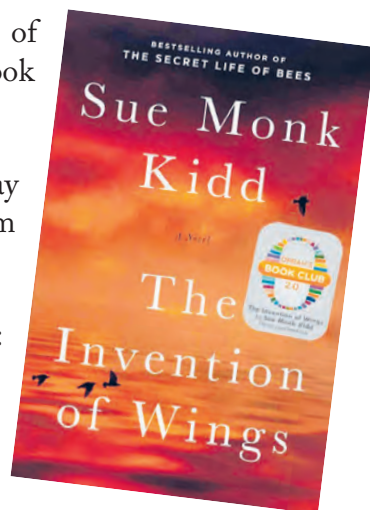


The Bloomingdale Regional Public Library offers lots to do in July for kids with time on their hands and for persons of all ages. We've included just a sampling. For a full calendar, go to www.hcpl.org/hcpl/locations/bdl. Call the library for registration and information at 813-273-3652.

- For children – Books We Love To Sing For Youngsters on Tuesday, July 8 at 11 a.m. Kids (grades K-5) Listen and participate as guitarist Christine VanHorn leads this interactive musical experience, bringing classic children's books and songs to life. For grades K-5.
- For children – Lost World Reptiles. Wednesday, July 9 at 1 p.m. Gino Sassani presents live snakes and reptiles in this educational program about slithery creatures. For grades K to 5.
- For children - Bubbles-A-Blast! Saturday, July 12 at 2:30 p.m. Concoct super bubble solution, watch clouds form right inside of a giant bubble, make a square bubble, and hold a bubble in the palm of your hand. Presented by High Touch High Tech of Greater Tampa. For grades K to 5.
- For adults – Author Event: Tim Dorsey. Monday, July 14 at 7 p.m. Meet author Tim Dorsey, former Tampa Tribune journalist turned novelist, who will discuss his 15 zany, Florida-based mystery novels. Dorsey will also answer questions and sign copies of his books after the program.
- For adults – Book Discussion: Swamplandia! By Karen Russell. July 21 at 7 p.m. Adults are invited to join in a discussion about this book. This is the story of the Bigtree Wrestling Dynasty and Ava, a precocious 12-year-old tomboy gator wrestler who struggles to hold Swamplandia and her family together in the wake of her mother's death.

Principal Librarian Eloise R. Hurst recommends the following reads:

- Adult Books – The Invention of Wings by Sue Monk Kidd (e-book format available)
- Young Adult Books – Every Day by David Levithan (e-book form available)
- Children's Books – Dork Diaries: Tales from a Not-So-Graceful Ice Princess by Rachel Renee Russell



VOTE DIPA SHAH

For School Board - District 6 (COUNTYWIDE)

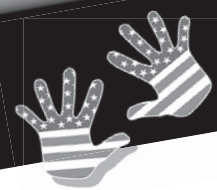


Dipa Shah owns and operates her law practice in Brandon, Florida. She lives in Valrico with her husband, Dr. Suketu Shah and her two boys who attend Hillsborough County Public Schools.

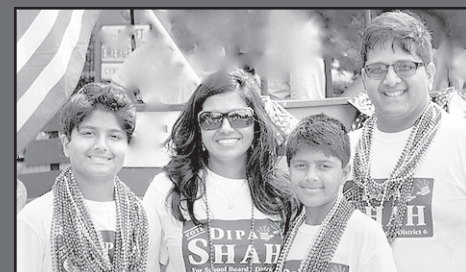
LEADERSHIP IN LEARNING

- Passionate about education
- Vision for a brighter future
- Professional education and experience

FOR THE KIDS!
FOR THE FUTURE!



www.VoteDipa.com



Voting (www.votehillsobrough.org):

District 6 is a countywide seat, any registered voter in Hillsborough County can vote in District 6

Primary election in August 26, 2014

Political Advertisement Paid for an approved by Dipa Shah for School Board – District 6)

182363-01

INs & OUTs

By: Miriam Leech

WHAT EVERY BLOOMINGDALE HOMEOWNER SHOULD KNOW ABOUT FLORIDA SOFT-SHELL TURTLES

Bloomingtondale residents are well aware of the fact that our roadways are shared by vehicles, cyclists, runners, and pedestrians alike—and that it is important to be cautious and aware at all times while driving. However, another type of Bloomingtondale resident likes to share the community roadways. Its name is the Florida Soft-Shell Turtle.

The Florida Soft-Shell Turtle, *Apalone ferox*, is the largest soft-shell turtle in North America, reaching up to 30 inches length. They have soft, leathery shells, webbed feet, and long, snorkel-like snouts that they extend to the surface of the water to breathe. They also burrow into the mud waiting for prey (frogs, fish, and crustaceans). Soft shells have soft lips but strong jaws that deliver a nasty bite. While aquatic, they do bask. They stay close to the water and are very fast swimmers. These turtles also can move very quickly on land.

Found throughout the state, the turtles favor marshes, lakes, ponds, and slow-moving rivers, which makes the Bloomingtondale community a perfect home and frequently turns our roads into turtle crossings.

Here are some tips for moving turtles from our roads:

- Turtles have a good sense of direction and a good sense of smell. So it is best to take them across the road in the same direction they were going.
- Do not put them into the water. Just set them at the edge of the water and see if they dive in or turn around and walk away from the water. Many turtles leave the water to let wounds dry out, to kill water parasites, or to lay eggs.
- You can lift most large turtles safely by lifting their back legs off the ground, (by lifting them by their tail) and then before their front feet leave the ground, put one hand under their shell and lift. Don't lift them off the ground by their tail because that puts a lot of strain on their spine.
- If you lift them by the sides you will get scratched by their claws. Not a problem if you have thick gloves or a blanket or towel to wrap around them.

Of course, never stop when it is unsafe or dangerous or when obstructing traffic. But if you find yourself asking, "What difference does it make to save one turtle?" Well, to that turtle it means EVERYTHING!

The Florida Soft-Shell Turtle is a resident of Bloomingtondale and frequently can be seen alongside of and/or crossing our roadways.

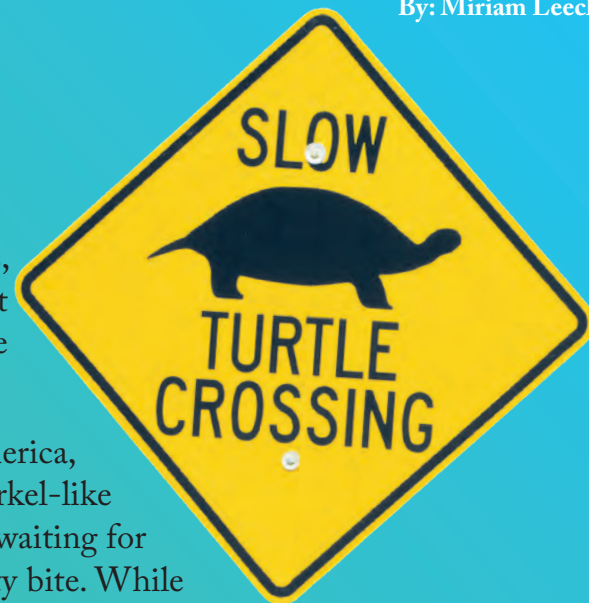
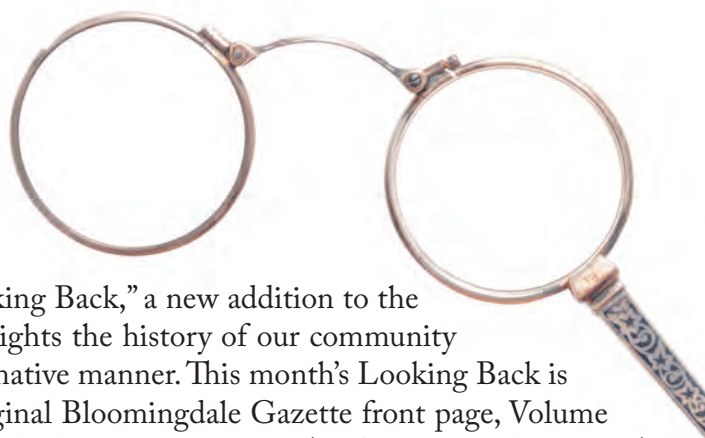
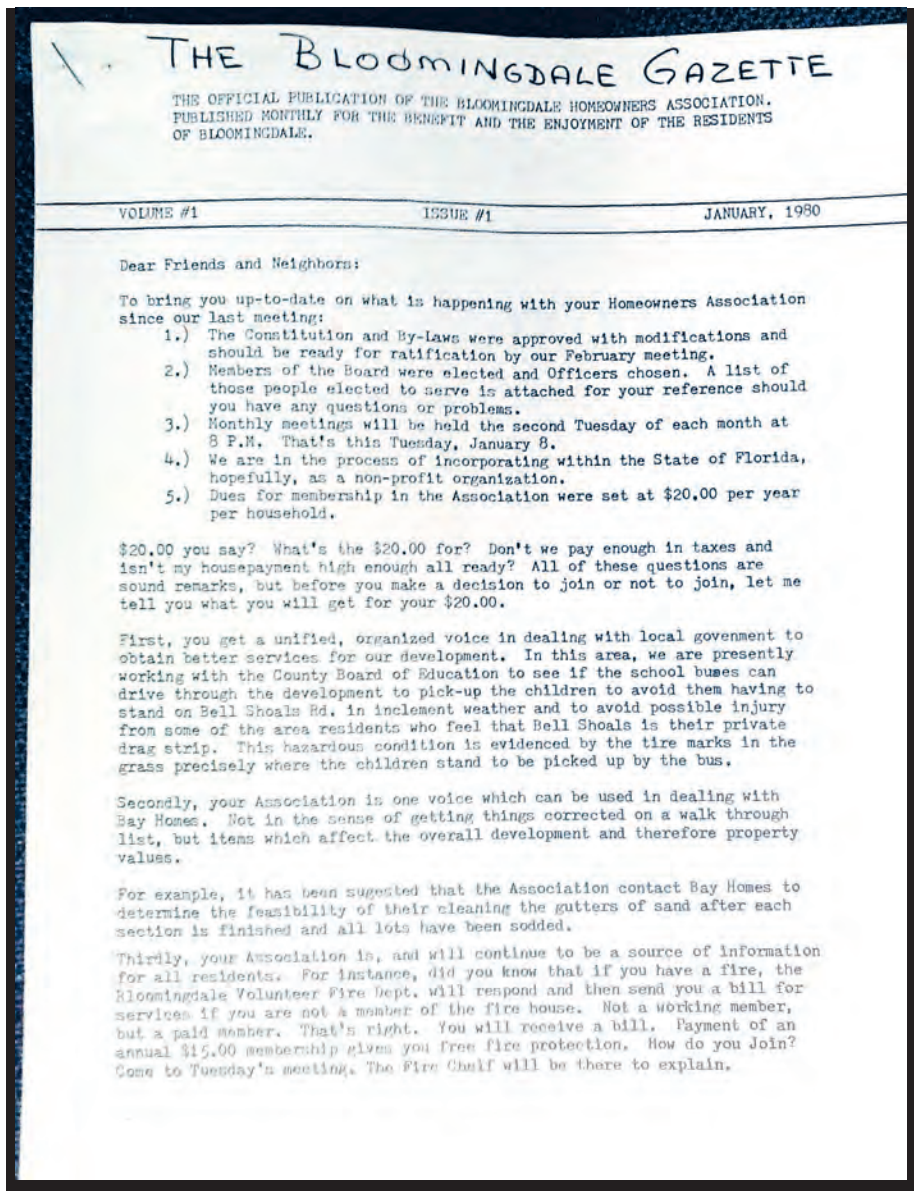


Photo: Joy Boisselle

LOOKING BACK



Welcome to "Looking Back," a new addition to the Gazette that highlights the history of our community in a fun and informative manner. This month's Looking Back is a photo of the original Bloomingdale Gazette front page, Volume #1, Issue #1, published in January 1980. (We've come a long way!) Noteworthy in the inaugural issue were plans to ratify the Bloomingdale Homeowners Association Constitution and By-laws, reporting of the first-ever board elections, and the establishment of \$20 membership dues. More than 30 years later, membership dues have increased a mere \$5, while homes in our community have increased from 200 to 5,200.



Janet Dougherty

For County Commission District 4

A Lifetime of Service to Hillsborough County Businesswoman

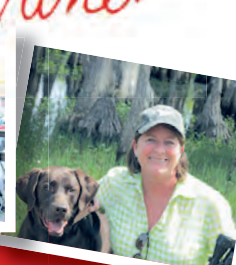
- Bachelor of Arts Degree in Public Administration
- Local Business Owner - President of Sage Eco Solutions, Inc. and HumiVerde, LLC

Community Leader in East Hillsborough County

- Public Servant - Appointed by Governor Jeb Bush to three public service boards
- Delegate - Ronald Reagan Republican National Convention
- Advocate - Preserving our natural resources as a member of the Tampa Bay Estuary Program and Tampa Bay Conservancy
- Civic Leader - Member of the Farm Bureau, NRA, Riverview and Brandon Chambers of Commerce, Propeller Club, Transportation Task Force and Riverview Community Based Planning, Cavalry Lutheran Church in Apollo Beach



I've been fortunate to meet many of you while walking door to door. I have listened to your concerns and look forward to being an advocate for your community with responsible growth and transportation initiatives. Thank you so much for your time and consideration. Don't forget to Vote Janet D on August 26th!



813-708-9022 • PO Box 1340, Riverview, FL 33568
www.VoteJanetD.com

Political advertisement paid for and approved by Janet Dougherty, Republican for County Commission District 4

181071-01

Thanks to the joint efforts of the Bloomingdale Homeowners Association (BHA), the Bloomingdale Special Taxing District (BSTD), and Hillsborough County, ribbon-cutting ceremonies were held on June 14 for the last two unnamed neighborhoods in the Bloomingdale community.

Fairway Park (formerly Section M) and Bloomingdale Pointe (formerly Section A) were feted by residents, BHA Board members, BSTD President Dave West and Vice President Mike Chanen, and Hillsborough County Community Liaison for Neighborhood Relations Wanda Sloan. New signs have been placed at each community entrance.

One of the missions of the BHA is to foster neighborhood pride and identity, and build a sense of community. Thanks in part to a mini-grant from the Hillsborough County Board of Commissioners and funds from the BHA, residents were able to vote on the name for their neighborhoods and take ownership in the name designation as part of the "Name Your Neighborhood Program."

Since 2004, this program has been the impetus for the naming of 10 neighborhoods, including Bloomingdale West, Spring Lake, Pine Oaks, Sandy Creek Manors, Cypress Reserve, Bloomingdale Trace, Stratford Trace, and Augusta Village.

The newly-named Fairway Park was established in 1984 and is made up of 153 homes. Bloomingdale Pointe has the distinction of being the first Bloomingdale neighborhood established in 1979, with residents also establishing the first Bloomingdale HOA. As the last named neighborhood, it is made up of 201 homes and today remains home to some original residents.

"The BSTD worked with the BHA on this project to continue our efforts to beautify the community and give each neighborhood an identity. We look forward to our continued partnership to help keep Bloomingdale a great place to live," said West. The BSTD will handle the upkeep of the newly installed signs.

Fairway Park is located at the corner of Bell Grande and Natures Way, next to Bloomingdale East Park, and Bloomingdale Pointe is located at Springvale and Natures Way, across from the park.



Photos: Miriam Leech

Fairway Park resident Priscilla Ryan, who has lived in the neighborhood for 30 years, helps BHA President George May cut the ribbon on their new sign. "We are so thankful to the BHA for getting this done," said Ryan.



Pictured: Dave West, BSTD President; Wanda Sloan, Hillsborough County Community Liaison for Neighborhood Relations; and BHA President George May. The joint efforts of these organizations made the "Name Your Neighborhood Program" possible.



Take Charge of Your Future.

Create and implement a strategy designed to help you achieve your long-term financial goals.

Do something positive for yourself. Call today for a no-cost, no-obligation portfolio review. Together, we can create a strategy that's right for you based on your current situation, objectives and risk tolerance.

Melissa L. Haskins
Financial Advisor
3616 Erindale Drive, Valrico, FL 33596
Office 813-681-1027
melissa.haskins@edwardjones.com

Edward Jones
MAKING SENSE OF INVESTING

www.edwardjones.com Member SIPC

WORK GUARANTEED

Don's Bay Area Painting Inc.

FREE Estimates

QUALITY WORKMANSHIP
ALL PHASES
ALL APPLICATIONS

Interior • Exterior
Pressure Cleaning
Repaint Specialist

WE MEET OR BEAT OUR COMPETITORS' PRICES

20 Years In Bloomingdale

813.661.9006 • www.donspainting.com

License #PA 2653
Bonded & Insured





BLOOMINGDALE COMMUNITY STATION NOTES

By: Community Resource Master Deputy Curtis Warren

June BACC Meeting Information/Notes

At the June meeting of the Sheriff's Bloomingdale Area Community Council (BACC) members were briefed on current HCSO activities covering crime in our community. HCSO District IV Detective James Howell and Bloomingdale Senior High School HCSO School Resource Officer (SRO) Deputy Ron Alexander also provided detailed information on important topics including the following:

Bloomingdale and Area Teens Need Parental Involvement

SRO Alexander noted that the parents of teens in our area need to be personally involved in the lives of their teens. He stated that this is even more important during the summer months when teens have much more time on their hands without adult supervision. They are also driving more. Detective Howell noted this can be seen in the increased number of incidents involving teens. This includes more vehicle accidents, criminal activities including vehicle burglaries and vandalism.

Parents, set the rules for the summer with your teens. Know where they are and who they are with. They need direction and guidance on how to have a safe summer to remember rather than a bad one they want to forget.

Vehicle and Home Burglaries, and Mail Theft

Detective Howell noted that there has been an increase in the number of vehicle and home burglaries in our area. The bad news is that many of these could have been prevented. Several vehicles that were burglarized were left unlocked and many homes that were burglarized had the garage doors left wide open. There is a simple solution – lock up your homes and vehicles, and close your garage doors!

Some of the vehicle burglaries took place at fitness centers like the YMCA and at Little League Parks. Be sure that valuables in your vehicles at these locations are locked up. Leave any special items like laptops at home.

Detective Howell highly recommends that all residents take the time to record the serial numbers of and take photos of all valuables in their homes. This step will help significantly in recovering the stolen items.

One BACC member shared that one of her payments had been stolen from her mailbox and the check later used to make several purchases. Postal officials recommend not putting up the flag on your mailbox and to mail bills directly at the Post Office.

Dangers on Nature's Way

Several members noted that there have been incidents on Nature's Way that have the potential for serious accidents. These include teens riding skateboards in the middle of the road and "daring" drivers to pass them! This is not a game. This may possibly be considered reckless endangerment and charges may be filed. Parents of these teens will be notified and held responsible.

Also seen were bikers riding side-by-side and joggers running side-by-side. This is legal but extremely dangerous on Nature's Way with its many curves and speeding drivers. Serious injury will result if and when side-by-side joggers and bikers have an accident involving a heavy vehicle! Riders and runners should be smart and safe—ride or run single file.

Update on Major Incidents in Our Area

Updates on major incidents in our area included the following:

- The arrest by the FBI of the "Doomsday Prepper" who led agents on a chase through Lithia, Valrico and Plant City. Fortunately this ended with no injuries.
- The missing Valrico teen being found in Louisiana. This happened after a truck stop worker recognized them, got involved and notified authorities.
- The hit-and-run driver that injured a couple riding on their motorcycle by Wal-Mart was arrested. She turned herself in at the Bloomingdale community Station.

Fireworks - Illegal and Very Dangerous

Some area residents will celebrate the July 4th holiday weekend with fireworks. Be aware that in Florida it is illegal to buy, sell or explode consumer fireworks, even on your own property, unless you have a permit to set off fireworks for the public! "Sparkler" type items are considered legal to use. Be smart and safe; go to a legal local fireworks display. Don't endanger yourself, your family and friends and your property.

Remember the 2004 Hurricane Season! Prepare Now!

Newcomers to our area may not remember the 2004 Hurricane season when four major hurricanes crisscrossed our state and did serious damage. August is usually the peak of the hurricane season so July is the critical time to prepare your Family Disaster Plan. Emergency officials tell us that everyone should be prepared to "be on your own for a minimum of 72 HOURS after a major storm." Important emergency preparation information can be found at www.hillsboroughcounty.org in the Emergency Management site. Have a Safe Hurricane Season – Prepare Now!!! See page 18 for more information on preparedness.

REMEMBER: If you notice any suspicious activity or a crime being committed, get all the information you can - descriptions of individuals, descriptions of vehicles and license numbers, and immediately call the Sheriff's Dispatch at 247-8200! Time is very critical! You can make a difference.



BHA COMMUNITY CORNER

DON'T FORGET TO LIKE US ON FACEBOOK! 

Ongoing 2014 Annual Membership Drive- The Bloomingdale Homeowners Association (BHA) needs your support to continue efforts to improve our community. For those that have already joined, donated to our scholarship fund, and purchased Bloomingdale Pride license plates, we sincerely thank you.

Please join today. Make checks payable to the BHA and mail to 3509 Bell Shoals Rd., Valrico, FL 33596. Or, stop by the office, and meet our office manager. An easier method is to use our PayPal option. Go to www.bloomingdalehoa.com, look for the PayPal link and follow the simple instructions.

JULY 7

Bloomingdale Special Taxing District (BSTD) Monthly Trustee Meeting, 6:30 p.m., 3509 Bell Shoals Rd.

JULY 8

BHA Monthly Board Meeting, 6:30 p.m., Bloomingdale Community Office, 3509 Bell Shoals Rd.

JULY 9

The Links Homeowners Association Regular Meeting Board Meeting, 7 p.m., Bloomingdale Regional Library. This is a resident-only meeting.

OCTOBER 25

Mark your calendars! The 2014 Bloomingdale Fall Festival is in the planning stage. This community event is fun-filled with activities for all ages; this year the festival will include a Halloween Pet Costume Contest. If you would like to be a sponsor, set-up a booth, or volunteer on the committee, please contact Mary Galin at 813-468-6279, or email: bloomingdale.homeowners@gmail.com.



The 2014 Fall Festival will feature a Halloween Pet Costume Contest. Check out Perry, a retired racing greyhound, modeling pumpkin attire. Want to volunteer? Contact the BHA at 813-681-2051 or email bloomingdale.homeowners@gmail.com.

WHAT HAS YOUR BHA DONE THIS YEAR?

- Provided a \$2,000 scholarship to a deserving Bloomingdale resident and high school senior
- Continued Board member attendance at “Big Box”, and Can-Do meetings, with follow-up information to residents
- Launched our New website, www.bloomingdalehoa.com and renewed our Facebook presence
- Conducted the community’s Annual Clean-up Day
- Sponsored the Spring Charity Golf Tournament benefiting K-9s for Warriors
- Completed the “Name Your Neighborhood” Project, begun in 2004, installing 7 entryway signs at the newly designated Fairway Park and Bloomingdale Pointe neighborhoods
- Provided over 700 community service hours for area high school students needing Bright Futures hours, since December 2013
- Awarded the Hillsborough County 2014 Best Large Community Newspaper for the Bloomingdale Gazette
- Attended monthly meetings with the Hillsborough County Sheriff’s Office for safety and security concerns in our area
- Continued to respond to resident questions and issues; over 2,000 phone calls and emails fielded since January 2014

BHA BRIEFS

PROJECT COMPLETE

The “Name Your Neighborhood” program that began in 2004 has ended with the final neighborhoods, Bloomingdale Pointe and Fairway Park, receiving entry way signs on June 14. See full story this edition.

BLOOMINGDALE ESTATES DEED RESTRICTION UPDATE

The draft documents are still in the hands of the BHA attorney. Information will be shared as it becomes available.

If you have events pending in our community, please email: bloomingdale.homeowners@gmail.com, or call 813-681-2051. We want to help you promote your event.



Opportunities that make the grade

178298-01

Kelly Educational Staffing®, is looking for talented individuals to fill substitute teacher positions. Previous experience is preferred, along with a desire to make a difference in a child's life.

These flexible positions can be full time or an excellent source of part-time supplemental income.

Positions available:

- Substitute teachers

Perks include:

- Flexible schedule
- Weekly pay
- Optional group-rate insurance*
- Service bonus plan

Requirements:

- Education verification- 60 College Credits
- Professional references

For more information about
Kelly Educational Staffing,
please contact your local
Kelly® office today:

Please call 813-518-5999 to find
out more or email
20JM@kellyservices.com.

You may also visit
hcsd.appone.com to start the
registration process.



 Craig Latimer
Supervisor of Elections

In less than two months, we'll be reporting our results from the Primary Election. Will your voice be included?

The Primary Election is important. Many nonpartisan races, including some school board members and judges, will be decided in the August election. And in partisan races, candidates will be selected to move on to the General Election.

Here in my office, we are in high gear preparing for the primary, and I'm hoping we have great voter turnout. Here's a checklist of what you need to do so that you're ready to vote in August.

REGISTER TO VOTE BY THE DEADLINE

The deadline to register for the Primary Election is Monday, July 28. All new registrations must be turned in or postmarked by 5 p.m. on that day. You can find voter registration forms in public libraries and county offices or give us a call at (813) 744-5900 and we'll send you one. You can also go online and fill in the voter registration form at VoteHillsborough.org. After you've completed the form, you'll need to print and sign it, and hand deliver or mail it to one of our four offices. Once your application is approved, we'll mail you a Voter Information Card.

DECIDE HOW AND WHEN YOU WILL VOTE

We offer three ways to vote:

- Vote By Mail
- Early Voting
- Election Day Voting

Vote By Mail is the most convenient way to vote. We mail you the ballot and you can vote from home – no commuting, no lines. And you can take time researching candidates and making your voting decisions. After voting, you can drop your ballot in the mail (we've pre-paid the postage) or at any Early Voting location. Now is a great time to sign up for Vote By Mail—just visit us online or get in touch with my office.

Early Voting allows you to choose the time and location that works best for your schedule. Visit VoteHillsborough.org to see the locations of our 15 Early Voting polling places, open August 14 – 24, from 10 a.m. - 6 p.m. (including weekends!).

If you enjoy seeing your neighbors on Election Day, then you'll want to vote on August 26. Polling places will be open 7 a.m. – 7 p.m. Unlike Early Voting, on Election Day you can only vote in the polling place assigned to your precinct. Check VoteHillsborough.org or call (813) 744-5900 if you're not sure where your polling place is located. Just remember, Election Day is your last day to vote.

MAKE SURE YOUR INFORMATION IS UP-TO-DATE

It's very important that we have your current residential address on file, since that determines what races are on your ballot. You can make an address change online at VoteHillsborough.org, or let us know by phone (813) 612-4180, email (voter@hcsoe.org) or in writing (include your date of birth). We also need your current name on file and a current signature. If you think your signature has changed, you'll need to submit an updated voter registration form with your signature.

KNOW WHAT TO BRING TO THE POLLS

We send sample ballots to all registered voters who aren't voting by mail. We encourage you to use your sample ballot to make your voting decisions and bring it to the polling place to use as a reference.

You'll also need to bring photo and signature ID with you. We accept nine types of identification: Florida Driver's License, Florida ID Card (issued by DHSMV), credit or debit card, student ID, U.S. Passport, military ID, retirement center ID, neighborhood association ID and public assistance ID. If you arrive at the polling place without acceptable identification, you may vote a provisional ballot.

FOR MORE INFORMATION

We want our voters to be informed and ready for every election. I encourage you to visit our website to learn about the candidates running for office and to find answers to just about anything you could want to know about elections in Hillsborough County. We also share timely information on Facebook, Twitter and through an email newsletter—and you can find the links to connect with us on our homepage at VoteHillsborough.org.

We work hard to provide you with excellent customer service. If you want to speak with someone in person, call (813) 744-5900 or visit one of our four offices:

- 601 E. Kennedy Blvd., 16th Floor, Tampa, FL 33602
- 2514 N. Falkenburg Rd., Tampa, FL 33619
- 12022 Anderson Rd., Tampa, FL 33625
- 10439 Gibsonton Dr., Riverview, FL 33578

Thank you for taking the time to learn more about elections in Hillsborough County. Together, we can make Hillsborough County the best place in America to vote!

Here in Bloomingdale it is critical that we get out and vote. As we witnessed through the "big box" situation, electing a County Commissioner who will truly represent the Bloomingdale area is especially important. Candidates for District 4 are: Rick Cochran (Republican), Janet Dougherty (Republican), Christopher Lawrence Weaver (Write In) and Stacy White (Republican). Be sure to read the August issue of the Gazette for more election news.

CAN-DO encourages the community as a whole (especially the HOAs) to keep tabs on the actual development as it comes in to being. Although CAN-DO's efforts on this specific matter have come to a close, it does not preclude the organization from supporting and advising on future efforts that may draw forth from the surrounding community.

Residents are especially encouraged to learn about the candidates and vote in the upcoming elections. The big box situation illustrates the importance of electing county politicians who care more about residents than developers.

What can the community do to continue supporting CAN-DO's efforts now that the legal action is over?

1. Pay all outstanding legal bills. CAN-DO needs to re-energize fundraising efforts. Their funds from the first phase (roughly \$8,000) are near depletion.
2. Ensure the county uses the concurrency money for direct improvements on Bloomingdale.
3. Vote in the upcoming BOCC elections—vote for commissioners who are more likely to represent residents in the Bloomingdale and Valrico area.
4. Monitor the retail stores that opt to move into the development on Bloomingdale. Let them know our neighborhood is important to us and we expect them to be good neighbors



TIMELINE OF EVENTS

2003 Property (bordered on the north by Guiles Rd., on the East by the already existing shops along Lithia Pinecrest, on the South by Bloomingdale Ave., and on the West by the public library and Bloomingdale High School) was privately owned.

2005 The property was sold to Thomas Enterprises. According to the sellers, Mr. Thomas of Thomas Industries worked diligently with the county to bring the original vision to fruition; however, he went into foreclosure on the property waiting for the county to approve his plans. The property was then acquired by M&I Bank of Sarasota.

2010 M&I requested the zoning be changed to a multi-use design (MUD) and subsequently sold the property to Redstone Investment. Also known as mixed use, this type of zoning includes residential, commercial, and business all in one area, as well as use and access of public transportation. Public notice to amend the original plan was provided solely through newspaper notices in the Tampa Tribune. According to the Community Affairs Office of Neighborhood Relations there was no legal requirement for the posting of site-specific signs (public meeting signs), as the change from TND to MUD was not considered rezoning. The process required only two public hearings with the Board of County Commissioners and a vote on consistency with the Hillsborough County Comprehensive Plan by the Planning Commission, which was received.

- 2013**
- Redstone Investment submitted a site plan to the county that outlined a big box store, five outparcels (businesses unknown), and a residential property (apartments/townhomes, since single family dwellings were ruled out).
 - CAN-DO organizes (April)
 - County Commissioner Al Higginbotham holds public meeting to address community concerns (June 10)
 - CAN-DO collects funds necessary to hire specialized attorney to work alongside the group to file a lawsuit defended on the basis of “illegal” rezoning amendment of the parcel in December 2011. (June)
Records show the developer attempted a rezoning in 2010 from Traditional Neighborhood Development (TND) Greenfield to TND Infill. After opposition, they pulled the request and in 2011 initiated a Land Development Code Text Amendment to redefine requirements under TND Greenfield. CAN-DO researchers claim that the text amendment was a fraudulent rezoning.
 - The BHA officially states its position against the proposed development (September), and voted to provide CAN-DO with financial support (November)
 - Bloomingdale CAN-DO announced on Nov. 20 that a lawsuit was filed concerning the text amendment, LDC 11-0607, that affected the Bloomingdale property. The defendants, Hillsborough County and Red Cast Bloomingdale LLC were served on Thursday, Nov. 21. The case number was 2013-CA-014098 and was assigned to Division K and Judge Levens.
 - BOCC voted to approve the Prop Share Agreement (December); however, they agreed to hold off until February (2014) on the allocation of the funds to give staff time to meet with the community and obtain public input.

- 2014**
- The Hillsborough County Public Works Department held a public meeting in the Bloomingdale High School auditorium on to discuss Bloomingdale area transportation improvements. (February)
 - Through the use of legal mediation, CAN-DO and the developers came to agreement on a plan that has the potential to enhance the neighborhood and surrounding community (June).
 - Moving forward, the local community is encouraged to keep tabs on the development as it comes to fruition.

FREE YOGA IN THE PARK OFFERED SATURDAYS

Certified yoga instructor and Bloomingdale resident Dina White believes in “paying it forward.” For some it’s an overused cliché, but in White’s case, she backs up that belief by offering free yoga to the community at the private park located at the end of Culbreath Road every Saturday morning, weather permitting.

A yoga devotee since a military tour in Afghanistan, White credits yoga and her past instructors with shaping her attitudes and goals. Coping with life in a war zone wasn’t easy, she explains. “There was a teacher on my base who offered free yoga, and I found sanity and clarity on my mat. I became a different and better person; in many ways, [yoga] saved and changed my life.”

White’s experiences have so influenced her that she, too, wanted to offer the same sort of respite from today’s high-stress lifestyles to others. “We all struggle in some capacity and teaching my students for one hour a week can go a long way in their lives, both mentally and physically,” she said. “[Students] become more aware of their bodies and thoughts, and as a result become stronger individuals, more capable of dealing with life’s curve balls.” Ultimately, White feels the practice of yoga helps her students to become better neighbors and people.

The class is available to anyone with or without experience. White’s students or yogis, as they are properly referred to, range from 15 to 60-plus years of age and their skill sets include first-time beginners to more advanced practitioners. Training includes body and mind focus where students learn to concentrate on themselves in a non-competitive and non-judgmental format. Throughout the hour-long class, White offers variations and modifications for all levels ensuring benefits are achieved for each student individually.

Yoga’s benefits are many and include both mental and physical strengthening. Yogi Kara Atchison has practiced yoga for many years. “I started yoga when I was pregnant with my first child who is now 11. Not only did it help with relaxation, I found it helped me to sleep, it was good for my back, and it helped with my delivery.”

Husband and wife yogis, Mike and Irene Kilcomons, are new to the discipline. “For us, this [free yoga] was a great way to start learning, and as I get older, I want to have better balance, flexibility and core strength,” Mike said.

Classes are held every Saturday 8:30 - 9:30 a.m. at the Somerset/Bloomingdale Cove private park. Students need only bring their desire and an open-mind as White has mats available for student use. In addition, she recommends that students bring sunscreen, bug spray (just in case), and water.

Certified through Yoga Loft, a Yoga Alliance-credited school, White’s goals for the program are simple. “My mission here is complete if I change only 5 lives for the better each week. Right now, we are all just having fun and supporting each other- just being good neighbors.”

For information, contact White at call 813-509-7780, email dmwhite86@gmail.com, or visit her Facebook page at www.facebook.com/bloomingdaleyoga.



Photos: Joy Boisselle

Students, under the watchful eye of instructor Dina White, properly transition from one pose to the next. Free yoga classes are available Saturdays, 8:30-9:30 a.m. at the private park located at the end of Culbreath Rd.

Music plays a large role in providing a relaxing a yoga class environment. A recent class featured live music performed by Holly and Heidi Earl, Bloomingdale High School Graduates and community residents. Led by instructor, Dina White, free yoga classes are available every Saturday, 8:30 - 9:30 a.m. at the private park located at the end of Culbreath Rd.



YARD OF THE MONTH



Photo: Suzanne Jones

William & Sharon Newton
4532 Swift Circle (Bloomingdale East)

Yard of the Month is sponsored by Ace Hardware of Bloomingdale. Send your Yard of the Month nominations to:
InBloomingdaleNews@gmail.com or call (813) 681-2051

Winners will receive a \$25 gift card redeemable at Ace Hardware of Bloomingdale



ACE
The helpful place.

Florida Aesthetics & Medical Weight Loss
Preserving
your natural look ...

Offering

Laser Treatments:

- Laser Facial Treatments
- Laser Hair Removal
- Laser Vascular Treatment

Topical Skin Rejuvenation:

- Chemical Peels
- Microdermabrasion
- Acne Treatments
- IPL
- OBAGI® Medical Skincare Products

Non-Invasive

Injectables and Fillers:

- Botox, Dysport, Xeomine
- Restylane, Juvederm, Radiesse

Medical Weight Loss:

- Holistic medical weight loss program
Supervised by Board-Certified physicians
- Behavior modification augmented by safe
supplements & FDA-approved medications



Eliminate Wrinkles & Aging Signs

Buy One OBAGI® Medical System At Our Special Price | **50% off** Microdermabrasion
And Get One Laser Treatment Session **FREE!** and Chemical Peels

Offers Valid Until July 30, 2014.

Florida
AESTHETICS
& MEDICAL WEIGHT LOSS
your ideal image within reach!

OBAGI
MEDICAL

ALLERGAN

CUTERA

MEDICIS
The Dermatology Company

MERZ

Call Today to Schedule Your Appointment!

1771 S. Kings Ave., Brandon, FL 33511 • 813.345.4044 • FloridaAesthetics.com



Services are provided by Board-Certified
Medical Practitioners

181996-01

LETTING OUR EYES CONTROL THE DISTANCE....

By: J.D. Carino (Bloomingtondale CC campus)

The amateur putter doesn't miss the hole three feet wide left or right. They miss it three feet short or long. The length of the putting stroke should dictate the distance the ball travels.

Let your eyes do the hard work by taking practice strokes while looking at the hole. Your eyes will tell your brain how far back and through the stroke must go to get the ball to the hole.

Now let your actual stroke have equal distance back and through with the same tempo as your practice strokes.

Take practice strokes from behind the ball using your eyes to get the needed calculating information to the brain.

Next month: Lean left, stay left. How weight positioning affects your chipping. Any questions or for lessons, please call J.D. (813) 957-3205.



BLOOMINGDALE SPECIAL TAXING DISTRICT

BLOOMINGDALE

3509 Bell Shoals Road
Valrico, Florida 33596
(813) 684-6667 Office
(813) 684-2358 Fax
BSTD@verizon.net

David P. West, President
Mike Chanen, Vice President
Mark Horst, Treasurer
Russell Jones, Trustee
Chris Papp, Trustee
Mark Vargo, Trustee

DINING WITH DAVE



Name: Jaymer Que, Southern BBQ
Cuisine: German Deli and Cuban Sandwiches
Location: 3331 Lithia Pinecrest Road - Northeast Corner of Bloomingtondale and Lithia Pinecrest
Phone: 813-657-4227

One of the fastest ways to sew discord among friends and co-workers is to bring up the topic of barbecue, and where to get the best. What style do you like—beef or pork, sticky sweet or dry and spicy, as a brisket or in a basket ... and don't even get started on sides! I've seen fisticuffs occur over the 'correct' way to pile a pulled pork bun. Yeesh, it's almost enough to make someone become a vegetarian (almost!).

Boundaries in place, it is my humble opinion that Jaymer Que has some of the meatiest, juiciest, and tastiest BBQ ribs in the Tampa area. This holds true for both their spare and baby-back offerings. However, beyond ribs, they offer amazingly delicious pulled pork, beef brisket (chopped or sliced), and burgers crafted from ground brisket. Four sauces of their own recipe are readily available and include mild, sweet, zesty and a West Carolina vinegar based sauce they call Piedmont. Salads, smoked chicken sandwiches, and a variety of other sandwiches round out the bulk of the menu.

Their side dishes are also pretty darn good. I happen to be a fan of the Smoked Cinnamon Apples (available on weekends only), but the made-from-scratch items such as baked beans, collards, cole slaw and pasta salad are equally good. Want an interesting taste sensation, try the smoked green peas or smoked green beans, the taste of which I cannot even describe it is so delicious. And no child can resist their home-made mac-n-cheese. For dessert, be sure to order the Award Winning Homemade Bread Pudding which melts in your mouth and could be a main course unto itself.

With all these made-from-scratch and homemade items, one has to wonder if Jaymer and his family live in the restaurant. It almost seems that way as the dining area is spacious and comfortable with a serve-yourself vibe that is extremely family friendly. If I have one criticism, it is that the religious iconography adorning the walls can be a little off-putting to the less spiritual customer, but the owners back up their value system by supporting local charities and non-profit organizations.

Drink options are limited to standard soda fountain fair and iced teas with milk for the kids and water for the palate. No beer or wine offerings, but with food this good and friendly, alcohol is unnecessary. A kids menu and weekday lunch specials are also available. As a small, family-run operation they are closed on Sundays and Mondays. Take-out, catering, and meat-by-the-pound packages are available as well.

BLOOMINGDALE REAL ESTATE & HOUSING UPDATE

Happy Fourth of July, Bloomingdale! Last month we discussed the effect certain home improvements can have on the appraised value of a home in tandem with the concept of marketability. Assuming a contract is in place with financial contingencies, a major stepping stone on the way to closing is ensuring the home appraises at or over the contracted sale price. As I mentioned last month, understanding key concepts and working closely with an agent can mitigate surprises keeping all parties informed and prepared. It's imperative to understand that appraisers do not take into consideration how much a seller paid for a home or how much a buyer or seller thinks the home is worth. Ron Balseiro of Balseiro and Associates has been kind enough once again to share insight into an appraiser's mind.

While Balseiro acknowledges that appraisal reports in theory are based on improvements and comparable, recently closed sales in the immediate area, he also admits that many facts obtained in the process are opinion-based. An example of this would be choosing which comparable homes to use in the report. Appraisers research closed sales within the last six months, preferably within a mile radius, and attempt to compare apples to apples. A general rule of thumb for selecting comparables is to stay within 20 percent square footage of the subject property, compare pool homes to pool homes or vice versa, similar bedrooms, garages, etc. Just because two homes are next door to each other doesn't mean they will sell for the same price per square foot if they are vastly different in size, layout and upgrades.

Once comparable homes are selected, the appraiser schedules an appointment to assess the subject property. Balseiro recommends being flexible to an appraiser's time and having either the owner or agent present to answer questions that may arise upon inspection. If neither can be present, making a list of all improvements for the appraiser to reference can help tremendously.

Mention big and small improvements such as a new pool pump, refinished pool surface, new hot water heater, A/C, new windows, doors, fixtures, flooring, paint, etc. While the appraiser may not provide premiums for all improvements, showing a tendency for putting money and value back into the home may play into the bigger appraisal picture. Also part of the bigger picture is the way a home presents itself upon inspection. Balseiro recommends sellers put their best foot forward just as if the home were still on the market. Pressure wash, landscape, clean, make the beds, and open the windows for natural light. Granted, these actions will not necessarily add to the value, but rather the overall perception. Ultimately, sellers and buyers may want to bear in mind that appraisers have inherently human qualities and are also subject to presentation and perceptions.

For more information regarding appraisals, Ron can be reached at 813-997-4394 or ron@rbalseiro.com. As always, I am always here to lend a proactive hand. Please stay safe and check back in August for Bloomingdale's first six months of 2014 in review!



Dina White
Realtor

Keller Williams
Realty

813-509-7780
dmwhite86@gmail.com
www.dinasellstampabay.com

Compassionate Dementia Care in a *Fun* Atmosphere!



What Family Members Say about Alzheimer's Care at Superior Residences

Sisters Terrie and Dawn knew their mother needed the assistance with daily living that they could not provide her. After researching various Alzheimer's communities, they visited Superior Residences of Brandon and found it to be the perfect home for mom.

Dawn stated, "The fact that all the staff at Superior understands Alzheimer's makes us comfortable. And Mom has felt safe and comfortable since the day she got there." Terrie agreed by emphasizing, "They're wonderful caregivers. It's a special gift they have and we're fortunate they're here. They know our mother and they love her."

Find out first hand why our community is aptly named Superior Residences and may be the better choice for your loved one. Call today for your personal tour.

**SUPERIOR
RESIDENCES
of Brandon**
MEMORY CARE
Assisted Living #AL9739

ASK ABOUT OUR "DAY STAY" SERVICES!

Like us on
facebook

1819 Providence Ridge Blvd., Brandon, FL 33511 • (813) 657-8587

Live the Moment...Love the Moment™

112201-01

Shaughnessy Law

(813) 657-6700

Free Consultation

**Weekend and evening
appointments available.**

Wills • Trusts • Probate
• Landlord-Tenant
Real Estate Agreements
• Foreclosures

Family Law

- Title/Closing Services
- Buy/Sell Agreements
- Corporations
- Contract Disputes

Mara Shaughnessy • Attorney at Law
618 East Bloomingdale Avenue • Brandon, FL 33511

The hiring of an attorney is an important decision that should not be based solely upon advertisements. Before you decide, ask us to send you free written information about our qualifications and experience.

181993-01

REMEMBER, IT IS HURRICANE SEASON



Hurricane Katrina on it's devastating path towards the Gulf Coast of Louisiana.

With the distinct possibility that Florida may be facing the first tropical storm of the season in the very near future, we have decided to provide this Hurricane Preparedness checklist provided by the National Weather Service in cooperation with NOAA (National Oceanic & Atmospheric Administration).

Two keys to weather safety are to prepare for the risks and to act on those preparations when alerted by emergency officials. These are essential pieces to the Weather-Ready Nation.

Refer to the Federal Emergency Management Agency's (FEMA) Ready.gov/hurricanes for comprehensive information on hurricane preparedness at home and in your community.

GATHER INFORMATION

Know if you live in an evacuation area. Assess your risks and know your home's vulnerability to storm surge, flooding and wind. Understand National Weather Service forecast products and especially the meaning of NWS watches and warnings.

Contact your local National Weather Service office and local government/emergency management office. Find out what type of emergencies could occur and how you should respond.

CONTACTS

Keep a list of contact information for reference.

- Local Emergency Management Office
- County Law Enforcement
- County Public Safety Fire/Rescue
- State, County and City/Town Government
- Local Hospitals
- Local Utilities
- Local American Red Cross
- Local TV Stations
- Local Radio Stations
- Your Property Insurance Agent



RISK ANALYSIS

Online hazard and vulnerability assessment tools are available to gather information about your risks.

- Check your hazards risks with FEMA's Map Portal.
- Rate your flood risk with the FloodSmart.gov portal.

PLAN & TAKE ACTION

Everyone needs to be prepared for the unexpected. Your friends and family may not be together when disaster strikes. How will you find each other?



Will you know if your children or parents are safe? You may have to evacuate or be confined to your home. What will you do if water, gas, electricity or phone services are shut off?

SUPPLIES KIT

Put together a basic supplies kit and consider storage locations for different situations. Help community members do the same.



EMERGENCY PLANS

Develop and document plans for your specific risks.

- Protect yourself and family with a Family Emergency Plan
- Be sure to plan for locations away from home
- Business owners and site locations should create Workplace Plans
- Make sure schools and daycares have School Emergency Plans
- Pet owners should have plans to care for their animals. The Centers for Disease Control & Prevention offer information on animal health impacts in evacuation shelters.
- Prepare your boat and be aware of marine safety if you are on or near the water.

HEALTH & ENVIRONMENT

Follow guidelines to guard your community's health and protect the environment during and after the storm.

- Review the Centers for Disease Control's (CDC) health considerations before, during, and after a storm.
- Remember to follow the U.S. Food & Drug Administration's (FDA) food and water safety guidelines during disasters.
- Review the Environmental Protection Agency (EPA) suggestions for health and environmental safety in disaster preparedness.

EVACUATION

- Review the FEMA Evacuation Guidelines to allow for enough time to pack and inform friends and family if you need to leave your home. FOLLOW instructions issued by local officials. Leave immediately if ordered!
- Consider your protection options to decide whether to stay or evacuate your home if you are not ordered to evacuate.



When waiting out a storm be careful, the danger may not be over yet...

Be alert for:

- Tornadoes – they are often spawned by hurricanes.
- The calm "eye" of the storm – it may seem like the storm is over, but after the eye passes, the winds will change direction and quickly return to hurricane force.

RECOVER

- Wait until an area is declared safe before returning home.
- Remember that recovering from a disaster is usually a gradual process.

Pre-diabetes affects over 79 million Americans. It is a potentially reversible condition that often leads to type 2 diabetes, a serious health condition that can lead to heart disease, stroke, kidney failure, high blood pressure and blindness. Based on effective efforts researched by the National Institutes of Health, the YMCA's Diabetes Prevention Program helps participants learn about and adopt the healthy eating and physical activity habits that have been proven to reduce the risk of developing type 2 diabetes.

"This is a program anyone can do," says Heather Gale, one of Campo Y's program instructors. The progressive program teaches nutrition using the www.choosemyplate.gov website to help participants track their food intake and count fat grams rather than calories; holds group-facilitated discussions on incorporating moderate physical activity in daily routines; and discusses behavior modification techniques such as how to handle stress, using positive action plans, and problem solving.

Medicare recipients who are over 65 and deemed at-risk for diabetes can participate in the program for free through grant funding. Here is how it works: The 12-month group-based program consists of 16 one-hour, weekly sessions, followed by monthly

1 OUT OF 3 U.S. ADULTS HAS ONLY 7% KNOW THEY HAVE IT.

maintenance sessions led by a trained lifestyle coach who facilitates a small group of people with similar goals.

The program goals are to lose 7 percent of your body weight and gradually increase your physical activity to 150 minutes per week. Says Gale, "People are seriously losing weight on this program." And participants are never told what they can't eat, but to balance what they eat. "It is why Santa has milk with his cookies," Gale tells her class. "The protein in the milk balances the sugar in the cookies."

Campo Y participant John Austin gave this testimonial, "I began my program in February at a weight of 234 pounds. I was sedentary at the time. Sixteen weeks later, I weigh 208 pounds, I exercise regularly, and I have changed my eating habits. My blood glucose

level has dropped into the normal range."

For those 18 and over who are at risk but do not qualify under Medicare, the program costs \$429. Some insurance companies also cover the program (check with your employer to find out more). Members and non-members are welcome. Contact Bridget Piephoff, program coordinator, at 813-922-2808 or bridget.piephoff@tampaymca.org to see if you qualify, or stop by the Campo Y for more information on its next class.



Kids R Kids
Learning Academy

CAMP NATURE KIDS

Junior & Senior Camps
(kindergarten – 12 years)
Limited Spaces

Now Enrolling!
LIMITED SPACES

SUMMER CAMP

Camp Nature Kids is an unforgettable ten-week odyssey that transforms campers into miniature scientists, explorers and adventurers as they investigate the wide and wonderful world beyond their back door.

Offering exciting, new and fun outdoor experiences everyday.
By the end of the camp – after all of their exploring, examining, creating and sharing – we're sure that the greatest find they'll discover is an enduring love of Mother Nature and their very own "wild side."

Kids R Kids
Schools of Quality Learning

Two Locations:
Valrico 813-657-6200 & Fishhawk 813-526-7000
www.krkvalrico.com



Happy 4th of July to our family & friends!

VPK
VOLUNTARY PREKINDERGARTEN

Summer & Fall 2014
Top-rated Program in Lithia and Fishhawk –
Now Enrolling!
Preparation for National Common Core Kindergarten Standards
Accelerated Pre-K Curriculum with Math, Science, Spanish, Music, Sign Language, APPLE, AdvancED & Gold Seal, Technology & Field Trips.
Call Today!
Classes Fill Fast!

SUMMER CAMP \$140 per week Reg. \$155
All Meals, Field Trips and Transportation Included. Must present this coupon for special offer at registration. Expires 7/31/14








ALL SCHOOLS

JULY 28 New Student Registration starts on July 28. Parents wishing to fill out forms prior to that date may pick up the forms at Buckhorn Elementary located at 2420 Buckhorn School Court, Valrico between the hours of 7:30 a.m. and 6 p.m.

AUGUST 19 Students' First Day of School

SEPTEMBER 1 Labor Day Holiday/Schools and District Offices Closed

Be sure to check the Hillsborough County Public Schools website (www.sdhc.k12.fl.us) for back to school information as it becomes available.



BLOOMINGDALE HIGH SCHOOL

JULY 28 - 31 OR AUGUST 4 - 7 Bloomingdale High School Summer Camp, 8 a.m.-Noon. Free four-day summer program for incoming 9th graders. Make new friends, meet upperclassmen, teachers and counselors, and get to know Bloomingdale! Learn about the AP program, extracurricular activities, clubs, Bright Futures, college/university awareness and much more! Register Today!

For more information or to register for our GAP I Summer Camp (August 4th - 7th) visit <http://academicprograms.mysdhc.org/GAPI>. For additional questions please e-mail Cara Diehl at cara.diehl@sdhc.k12.fl.us

AUGUST 4 BSHS swim team informational meeting, 7 p.m. in the Bloomingdale Media Center. For more information contact Eva Applebee (eva.applebee@sdhc.k12.fl.us).

AUGUST 14 Bloomingdale High School Open House, 5:30 p.m. Come learn more about Bloomingdale High School at our freshman and new student orientation at 5:30. New students will get their schedules at 6 p.m., and returning students can receive their schedules at 7 p.m. Meet your teachers and pick up your syllabi. Stop by the cafeteria to purchase your yearbook, PE uniforms and spirit shirts. More information



BSHS PLAYER TYLER CLARK SELECTED TO BLUE GREY

By: Deidre Morgan



Photo: Clark Sports Media

Bloomingdale High School senior Tyler Clark is off to the NFL Hall of Fame. Clark, the son of Tom and Karen Clark of Valrico, was selected to attend the Blue Grey All American Bowl in Canton, OH. Tyler is the first Bloomingdale football player ever selected to attend this prestigious game. Tyler, a defensive tackle, began his first year playing football his sophomore year on the JV football team.

Bloomingdale Defensive Line Coach Elbert Shumake said of Clark, "Tyler is a great football player, but an even better human being. Tyler is the kid that is always on time and is willing to go above and beyond what is asked of him. Since arriving at Bloomingdale I have honestly felt like I haven't been coaching him, but it's more of a partnership. Kids like Tyler succeed in life because of the core values instilled in him from his family and support system."

Linebacker Coach Kyle Jones says that "Tyler is the kind of kid every coach enjoys coaching. From the minute he joined our football program he has been dedicated and determined to get better. He is in a position to lead his team and be a leader on a team that is going to do things no team in Bloomingdale history has ever done. I am looking forward to see what he does in his senior year."

Tyler's next step is to attend the Blue Grey Super Combine at the University of Texas in Arlington. In January 2015 he will be competing in the Blue Grey All American Bowl at Raymond James Stadium. Tyler's future plans are to attend college and major in Business and Sports Medicine in addition to pursuing a career as a Firefighter/Paramedic. Whatever path Tyler chooses it is sure to be a bright one.

Congratulations to BSHS defensive tackle Tyler Clark. Clark was invited to participate in Blue Grey Football, which consisted of competing in regional and super combines, and then selection to participate in the All American Bowl to be held at Raymond James Stadium on Jan. 10, 2015.



HELP FILL A BACKPACK FOR ANNUAL YMCA BACK-TO-SCHOOL EVENT

By: Miriam Leech

Bloomington resident Carol Scheafnocker knows a thing or two about filling a backpack—and as chairperson for the YMCA's Annual Backpack Outreach Event for the second year in a row she is looking once again to the community for donations.

To be held on August 9 at the YMCA Camp Cristina in Riverview, the backpack events draws families from the Valrico, Brandon, FishHawk, Dover, and Plant City areas who have registered beforehand their need for help with school supplies. "We are shooting for supplies for 1,500 1st through 12th graders," says Scheafnocker.

Items needed include backpacks, pens/pencils, composition books, wide-ruled and college-ruled paper, pocket folders, markers, colored pencils, and 2-inch erasers. Corporate donors and individuals are being asked to sponsor the following items, fulfilling the entire need or a portion thereof:

- 2,600 pencils
- 880 packs of wide-ruled or 300 packs of college-ruled paper
- 875 markers
- 1,400 pocket folders for elementary school; 1,550 pocket folders for middle/high school
- 825 scissors
- 855 pink erasers or 1,224 pencil cap erasers
- 1,100 black and blue pens (one each)

Members of the community also can drop off donated items or cash donations at the Campo Family YMCA or any Brandon Area Y--\$20 can purchase a backpack with all the necessary supplies for one child.



Community members can also attend the 12th Annual Back-to-School Festival on July 27 at the Campo Family Y. Bring \$10 worth of school supplies or a \$10 cash donation and enjoy food and entertainment while helping send a child back to school.

For more information contact Kavita Marballi at the Campo Family Y, 813-684-1371.

Bloomington resident Carol Scheafnocker is chairperson for the YMCA's Annual Backpack Outreach Event to be held on August 9 at Camp Cristina.



VALRICO / FISHHAWK CHAMBER OF COMMERCE

the YMCA

Tampa Bay Times

PRESENT THE 12TH ANNUAL

Back to School Festival

Sunday • July 27, 1 - 4 p.m.
Campo Family YMCA

Over 100 indoor vendors • Music • Entertainment
Support the community and the Y Backpack Program

Entry fee per family: Bring \$10 worth of school supplies or a \$10 cash donation to be donated to the YMCA Backpack Program

Call Marie Gilmore at (813) 657-2418 for information.

SPONSORED BY

Chick-fil-A Kids R Kids Pure Power Productions OBSERVER Tutoring Club

Star Quality Cleaning Services

COMMERCIAL & RESIDENTIAL

20%

discount for new customers

Call for FREE estimate!

813-295-9397 • starqualitycleaning.net • Brandon • Tampa • Valrico • FishHawk

- Weekly, Bi-Weekly,
- Monthly, Quick Clean
- Spring/Fall Deep Cleaning
- Move In-Move Out Clean
- Residential
- Apartment
- Small Business Offices

Licensed, Bonded & Insured

Bloomington Resident for 9 years

Make Your Financial Future a Priority.

Take advantage of our complimentary financial review at least once a year. We will discuss the different strategies available to help put your finances in line with both your short- and long-term goals. To schedule your complimentary financial review, call or visit today.

Dan Sammons, CLU®, ChFC®
Financial Advisor
3616 Erindale Drive, Valrico, FL 33596
Office 813-681-1462
dan.sammons@edwardjones.com

Edward Jones
MAKING SENSE OF INVESTING

www.edwardjones.com Member SIPC



SUPERVISOR OF ELECTIONS RECOGNIZES AWARD WINNING STUDENTS AND SCHOOLS

Craig Latimer, Hillsborough County Supervisor of Elections, recently visited Bloomingdale High School and five other area schools to recognize schools and students who participated in Vote Hillsborough contests, which were geared towards registering voters and raising awareness about voter registration.

The Supervisor of Elections Office partnered with Hillsborough County Public Schools inviting students to participate in a voter registration contest, a poster contest and a video contest. Caspers Company McDonald's® Restaurants is provided prizes for the poster and video contest participants.

Voter registration drives were held in high schools by the Supervisor of Elections Office in the fall and spring, registering nearly 3,000 students. The Voter Registration contest awards recognized schools with the highest percentage of their senior class registering to vote. Bloomingdale High tied with Durant High School, with both schools involving approximately 40 percent of the senior class. King High School earned first place with approximately 47 percent participation, followed closely by Sickles High School with approximately 45 percent participation.

For additional information visit the Hillsborough County Supervisor of Elections website, www.votehillsborough.org.



Photo: Hillsborough County Supervisor of Elections Staff

Craig Latimer, Supervisor of Elections, presents (Left) Debbie Buono, Economics Teacher, and (Right) Nicole Gallucci, Assistant Principal, of Bloomingdale High School with 3rd Place honors in the Vote Hillsborough Voter Registration Contest.



BLOOMINGDALE HIGH SCHOOL - GAP 1 CAMP

For Incoming 9th Graders

August 4th - 7th (Or July 28th-31st)

8AM to 12PM



- 🐮 **FREE** Four-day summer program
- 🐮 Bus service provided for students living in the 33619 Zip code during the **July 28th - 31st session.**
- 🐮 Make new friends, meet upperclassmen, teachers and counselors, and get to know Bloomingdale!
- 🐮 Learn about the AP program, extracurricular activities, clubs, Bright Futures, college/university awareness and much more!
- 🐮 **Register Today!**
 - 🐮 Go to <http://academicprograms.mysdhc.org/> and select GAP I Registration
 - 🐮 Provide your Student's information. (Register for the August 4th-7th session even if you plan to attend camp during the July 28th - 31st session.)
 - 🐮 After completing the online registration, print the "GAP I Registration and Registration Receipt" form, be sure to sign it, and either drop it off at Bloomingdale or mail the form to Bloomingdale (GAP Camp) at 1700 E. Bloomingdale Ave, Valrico FL. 33596
- 🐮 Once received we will contact you via email to confirm you date preference (July 28th-31st or August 4th - 7th)

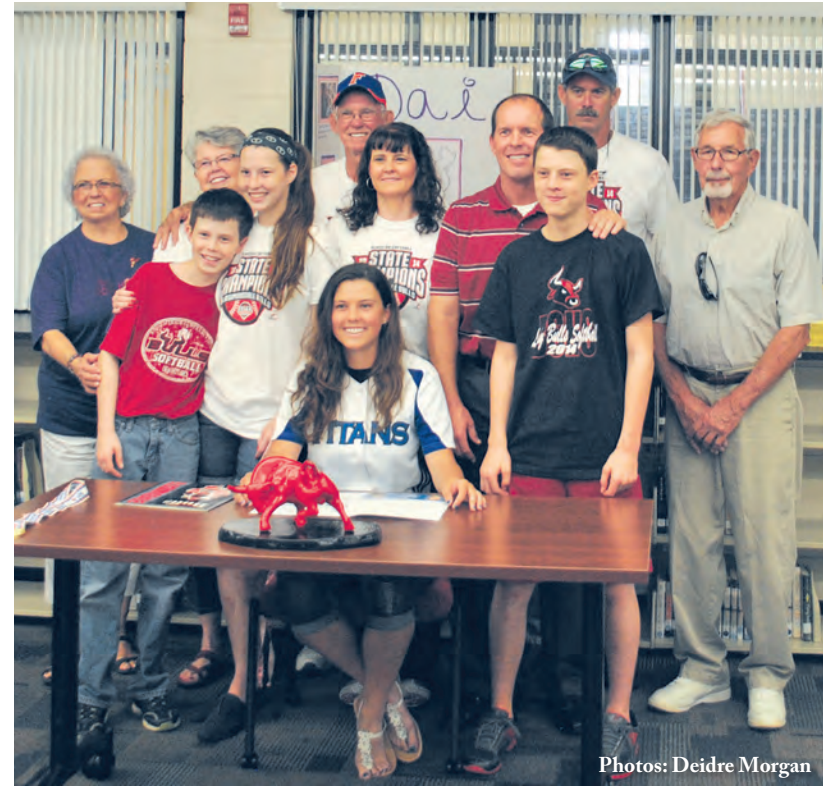


OOPS!

Ooops. We apologize to the Townsend and Bernaldo families for the photo mix-up in June's issue of the Gazette. Congratulations again to the class of 2014 athletes on their special accomplishments.



Grant Townsend signed to play basketball for the Air Force Academy. Grant is pictured here with his parents Tom and Allison, and other family and friends.



Darby Bernaldo signed with Eastern Florida State College to play softball. Darby is pictured here with her parents Rick and Stephanie, brothers and sister, and other family members.

Photos: Deidre Morgan



Salt

is a natural,
drug-free
therapy

- Relaxation
- Anti-Inflammation
- Anti-bacterial

Relieves symptoms of

- Sinusitis
- Allergies
- Bronchitis
- Congestion & Cough
- Asthma
- COPD

181035-01



THE SALT GROTTO



**Now Offering
Acupuncture, Infrared
Sauna & Massage**

Follow us online and on Facebook to
learn more about Halotherapy... **just breathe!**

www.TheSaltGrotto.com
1026 Bloomingdale Ave., in Plaza Bella
Next to the Shrimp Boat
813-324-8946
info@TheSaltGrotto.com





Amazing Stories.

Tampa Bay Times

People in Bloomingdale create amazing stories every day, and the *Tampa Bay Times* tells them like no one else. Turn to the *Times* in print or online.

Read the stories behind the photos
tampabay.com/amazingstories



181035-01

Delivering 30 Years of Miracles

When you're expecting, consider your community hospital, **Brandon Regional Hospital**, that has delivered over **83,000** babies.



Our experienced staff will care for you and your newborn with the high level of skill and compassion that we have been delivering for 30 years.

- Spacious, private rooms with a private bathroom to help you and your family feel at home
- Level III Neonatal Intensive Care Unit, the highest level of care available for babies
- Dedicated state-of-the-art obstetrical surgical suite, always prepared and ready
- Nurses credentialed in fetal monitoring by the Association of Women's Health, Obstetrics and Neonatal Nurses



TO LEARN MORE ABOUT THE BABY SUITES AT BRANDON REGIONAL HOSPITAL OR TO REGISTER FOR CHILDBIRTH CLASSES, CALL 813.653.1065 OR VISIT BRANDONREGIONALHOSPITAL.COM.