

# THE BLOOMINGDALE GAZETTE

Volume XXXI  
Number 7

AUGUST 2013 • THE OFFICIAL PUBLICATION OF THE BLOOMINGDALE HOMEOWNERS ASSOCIATION SINCE 1980



Pickleball, shown here in a file photo, is growing faster than most facilities can accommodate. The craze has taken the Campa YMCA by storm.

## Loving the pickle they are in

Pickleball – invented in a backyard and named after a pet – has become an adult fitness craze. And the Campa YMCA is no exception.

**See story, page X.**

### QUOTE OF THE MONTH

*"Just play. Have fun. Enjoy the game."*

**Michael Jordan**



# Yard of the Month

Scott and  
Anne Marie Morgan  
4505 Kylepoint Way  
(Bloomingtondale East)

**Yard of the Month**  
is sponsored by  
**Ace Hardware of**  
**Bloomingtondale**

Send your Yard of the Month nominations to [inbloomingtondalenews@gmail.com](mailto:inbloomingtondalenews@gmail.com) or call (813) 681-2051. Winners will receive a \$25 gift card redeemable at Ace Hardware of Bloomingtondale



SUZANNE JONES

## Back to school news

Hillsborough County Public Schools begins the new school year on Aug. 20. The 2013-2014 academic is posted on the Hillsborough County Public Schools website, with important dates about grading periods, holiday breaks and non-student days.

Open houses and other orientation events are wonderful opportunities for students and parents to meet teachers, obtain school year information and purchase some needed items.

Dates and times for the following events are subject to change; schools will release final open house information beforehand via mail and/or the parent link phone system.

### Alafia Elementary

- Contact the school for open house information.
- Cimino Elementary
- Aug. 16 - "Meet the Teacher." Students with last names beginning with A-L are scheduled for 11a.m.-noon; and, students with last names beginning with M-Z are scheduled for 1-2 p.m.
- Aug. 27- The Tampa Bay Rays mascot will visit the school for annual "Back to School Bash." Our theme this year is "GAME ON for Learning!"

- Security notes: the district provided additional fencing for Cimino last year which provided additional security. Faculty and staff will receive training in some new procedures that have been added to safety protocols.
- Parents are reminded that all visitors to schools must sign in and out at the front office and must provide ID.

### Burns Middle School

- Aug. 6 or 8 (date tentative)-Ice Cream Social for incoming 6th graders. Check the school website for a definite date and keep your ears open for the parent link phone call.
- Aug. 15 - Burns orientation/open house. Mr. DiPrima asks that students and parents please adhere to the assigned times for orientation, as parking is always a challenge. Orientation for 6th graders will be 2-4 p.m.; 7th and 8th grader orientation 4-6 p.m.

### Bloomingtondale Senior High School

- Aug. 15 - BSHS open house. Freshman and New Student Orientation: 5:00 - 5:30 p.m. (Students will meet in the Gym and Parents in the Auditorium). Freshman and New Student Open House: 5:30

- 7 p.m. Returning Students Open House: 7 - 8:30 p.m. Students will be receiving a post card in the mail with important dates and homeroom.

### School nurse advice

Sometimes overlooked; most times unpopular—immunizations are nevertheless required by Hillsborough County Schools and the Florida Department of Health. A student can only be exempted from these requirements with a physician's letter (medical exemption) or letter from an authorized religious leader (religious exemption). Otherwise, a student will be held from class until all immunization requirements are met. (Check the Hillsborough County Schools Student Handbook or visit the SDHC website for detailed information.)

### BSHS college and career corner

The Bloomingtondale Guidance office has been working hard this summer preparing for the school year. College and Career Counselor, Leena Hasbini, offers students some college readiness advice to keep in mind this school year.

#### Freshman

- Join clubs at Bloomingtondale and get in-

involved with community-based and leadership-oriented activities.

- Keep a running list of accomplishments, awards, and recognitions to use in preparing a resume and college applications.

- Explore and identify possible career fields that interest you

- Meet with your guidance counselor to discuss a graduation requirements and an academic plan

#### Sophomores

- Attend college and career information events, visit college campuses, and talk with college representatives.

- Continue exploring college and career options.

- Take challenging coursework (Honors/AP/Dual enrollment) and focus on maintaining a strong GPA.

- Update your record of activities and accomplishments.

#### Juniors

- Attend in-person or online college fairs and college-prep presentations. Meet with college representatives that visit Bloomingtondale

- Take the SAT and/or the ACT
- Research ways to pay for college. (Visit BSHS Guidance, College and Career web page for links and resources.)



# Livingstone Academy Autism Center to open

BY MIRIAM LEECH

Talk with Kristin Seltzer about educating special needs children, and her passion for them shines through. When the new Livingstone Academy Autism Center opens across from Bloomingdale High School on Aug. 20, she will be the first one to greet students.

The Autism Center will be located on Bloomingdale Avenue in the space once occupied by Valrico Academy. Seltzer will serve as director of the center, the third and newest location for the private Livingstone Academy – formerly Bay Life Academy, founded by Chris and Bernadette Pello – with a focus solely on the needs of children across the autism spectrum.

“If you have met one child with autism, then you have met one child with autism,” said Seltzer. To meet their individual needs, the center will carefully balance the classroom placement of students based on the level of support each requires. The maximum capacity of the school is 45 students divided amongst four to five classrooms, kindergarten through eighth grade. The slots are nearly filled already.

The center will serve the needs of its students through multiple resources and diverse methods.

“We don’t just help the student, we help the family as well,” said Seltzer.

The school offers the support needed to make the students as independent as possible by focusing on social-emotional development, academics, and behavior. Daily functional living skills such as using snaps and buttons, brushing teeth, finding emergency phone numbers, and learning bus routes are also

built into the curriculum.

Applied Behavioral Analysis therapy is provided in a centrally located clinic by Livingstone partner Engage Behavioral Health. Clinic staff works one-on-one with autistic children and helps them engage in the classroom setting. Speech and language services will be provided by the Hillsborough County School District. Parentally-placed private school students with an Individualized Education Plan can receive these services.

The centerpiece of the Autism Center is its Sensory Gym. Many children with autism experience sensory processing disorder, which means their perception of their environment is impaired in some way. The gym will be staffed by a certified occupational therapist who will work with students on gross and fine motor skills; movement; and visual-spatial, oral, and auditory senses.

The gym will be equipped with a mini-trampoline, rockers, swings, and even weighted blankets and body socks, which some children find soothing. One hundred percent of donations made to the school, which is non-profit, will go toward equipping the Sensory Gym. Donations will also be used for playground equipment.

“We are very excited about the opportunity to open the Autism Center,” said Seltzer. “It is going to be very special.”

The plan is for the school to grow slowly with a dedicated staff, ensuring the integrity of the program. For more information on Livingstone Academy Autism Center, Kristin Seltzer can be reached at (813) 661-4200, or visit their website at [www.baylifeacademy.org](http://www.baylifeacademy.org).



MIRIAM LEECH

Kristin Seltzer, Director of the new Livingstone Academy Autism Center, explains “We do not put limitations on our children. We provide a loving environment; if they need a hug we give it.” The Autism Center opens August 20 across from Bloomingdale High School.

## Dementia Care

Specialized, compassionate & fun atmosphere.

A unique, home-like community for those at all stages of Alzheimer’s disease & dementia. Ask about our “Day Stay” services.

Caregiver tip: *agree, agree, agree...*

- ♦ They are where they say they are.
- ♦ You are where they say you are.
- ♦ You are who they say you are.
- ♦ They are who they say they are.

Live the Moment...Love the Moment™

- Nurses 24 Hours a Day
- Alzheimer’s Support Group
- Extended Congregate Care
- Respite Care

 **SUPERIOR  
RESIDENCES  
of Brandon**  
MEMORY CARE

(813) 657-8587

1819 Providence Ridge Blvd., Brandon, FL 33511  
[www.SuperiorALF.com/Brandon](http://www.SuperiorALF.com/Brandon)



Like us on  
**Facebook**

Assisted Living Lic. #AL9739

Live the Moment... Love the Moment™



PROVIDED

The autism puzzle pattern represents the diversity and complexity of this increasingly prevalent developmental disability.



## YOUR INSIDE CONNECTIONS

BLOOMINGDALE HOMEOWNERS ASSOCIATION INC.  
PO Box 7221,  
Brandon, FL 33508  
Phone: (813) 681-2051  
E-mail: bloomingdale. homeowners@gmail.com

BHA board meetings are held the second Tuesday of each month at 7 p.m. at the Offices of Bloomingdale Special Taxing District, 3509 Bell Shoals Road. They are open to Bloomingdale residents.  
Web site: bloomingdalegazette.com

**President:**  
George May  
**Vice president:**  
Jim Harris  
**Secretary:**  
Daniel Berkowitz  
**Treasurer:**  
Dennis Osborn  
**Director at Large:**  
Mary Shaw

## The Bloomingdale Gazette

The official publication of the BHA since 1980  
Post Office Box 7221,  
Brandon, FL 33508  
Editor: Suzanne Jones  
Phone number:  
(813) 681-2051  
E-Mail: inbloomingdalenews@gmail.com  
Web site: bloomingdalegazette.com

The Gazette is published by Sunbelt Newspapers  
202 S. Parker Street,  
Tampa, FL 33606-2395  
Ph: (813) 259-7479  
Advertising: 627-4771  
The Gazette is delivered free to Bloomingdale residents on the first Saturday of each month.

# Local hearing dogs earn their kibble

Bloomington-area women grateful for their special companions

BY MIRIAM LEECH

Bloomington-area resident, Debbie Matula, and her dog, Sunny Delight, may not draw everyone's attention as Debbie goes about her daily errands. But Sunny Delight's bright orange leash signifies that he is more than just a companion—he is a hearing dog. Approached while heading into a local Publix, Matula readily struck up a conversation about her hearing dog and how challenging it can be to conduct day-to-day errands, especially when some store managers are uninformed about assistance dogs.

Hearing dogs assist deaf and hearing impaired persons by alerting them to a variety of household sounds such as a telephone, doorbell, baby cries, or someone calling their name. The dogs are trained to make physical contact and lead their human partners to the source of the sound. If the smoke alarm sounds, the dog will alert its owner then get down on its front paws to signal "get out of the house." The dogs also serve as a bridge to the hearing world when with their owner in public.

According to the Hearing Loss Association of America, approximately 48 million Americans report some level of hearing loss, and many with severe hearing loss use assistance dogs to help them in their daily living. The Americans with Disabilities Act requires privately-owned businesses that serve the public to allow people with disabilities to bring their service animals onto business premises in whatever areas customers are generally allowed. Not everyone understands

the use of assistance dogs, which is perhaps the reason three Bloomington-area businesses have turned away Matula and Sunny Delight.

Fortunately, people like Bloomington resident Cynthia Moynihan work tirelessly to educate the public about hearing loss so that experiences like Matula's become a thing of the past. Moynihan, who also has a hearing dog, was inspired by her doctor to help others with hearing loss.

"You might be deaf, but don't become deaf to the world," challenged Dr. Lisa Tanner of Brandon.

Her story and experience with her own hearing dog make Moynihan a perfect advocate for hearing loss. The mother of two was born with a hereditary hearing loss that worsened over the years. Two years ago, a labrador/golden retriever mix, LaRue, came into her life giving her a new-found freedom.

Moynihan received LaRue from Canine Companions for Independence (CCI), a national non-profit organization. She went through intense training and graduation at the CCI campus in Santa Rosa, CA, before bringing LaRue home.

"My job now is to make sure she lives up to the standards of CCI. That is my way of giving back and saying thank you," said Moynihan.

Moynihan is involved with several national hearing loss organizations, and currently is completing a two-year Peer Mentor certification program through Washington D.C.-based Gallaudet University. Because hearing loss now affects one in three



MIRIAM LEECH

**Bloomington resident Cynthia Moynihan and her assistance dog LaRue are hearing loss advocates, as well as best friends.**

teenagers, Moynihan has also developed a presentation geared toward younger people called, "Protect Your Ears So You Can Hear."

Debbie Matula is proof that Moynihan's efforts are paying off—people have learned from and are inspired by Moynihan.

"Oh, I have been wanting to meet her!" ex-

claimed Matula during the chance interview. The two local women, who have much in common including their special canine companions, are now in communication.

LaRue has been nominated in the hearing dog category of the The American Humane Association Hero Dog Awards, which were created in 2010 to

celebrate the remarkable bond between dogs and their people. You can vote for LaRue by visiting [www.herodogawards.org](http://www.herodogawards.org).

For more information on presentations by Moynihan and LaRue or on hearing loss, visit the Advanced Diagnostics and Hearing Solutions website at [www.hearingsolutions-brandon.com](http://www.hearingsolutions-brandon.com).



# BSTD hoping to raise neighborhood pride, not taxes

Have you ever wondered about those mysterious golf cart driving, litter picker uppers around Bloomingdale? Perhaps you thought they were do-gooding neighbors with time to spare. In actuality, they work for you.

Bloomingdale homeowners are currently assessed \$130 annually for services such as neighborhood litter cleanup. Unlike some tax-funded programs and services, Bloomingdale Special Taxing District (BSTD) expenditures directly impact the immediate community of Bloomingdale homes. Constituents can truly see a return on their tax dollars, and the BSTD Board of Trustees encourages them to actively participate in stretching tax dollars through changing some simple, everyday habits.

"Within the past 12 years we've seen Bloomingdale Special Taxing District annual assessments go from \$80 to \$130," explained BSTD President David West. West and others who serve on the Board of Trustees are responsible for developing the Taxing District's annual budget and maintaining the reserve of funds used to pay for community upkeep and improvements. "Our tax base (number of residences) is now nearly saturated, meaning we have very few new homes that can be built in Bloomingdale to help spread out/absorb the rising costs of maintaining the community's appearance," said West. "The Board works hard to make annual tax assessments last, but resi-



SUZANNE JONES

**A once grassy area near Alafia exposed to extra wear and tear awaits a new carpet of sod.**

dents really can help manage expenses." There are two easy ways residents can help: reduce littering and eliminate parking on common greenways.

The Taxing District is tasked with upkeep of the 16 acres of sod that beautify common areas within Bloomingdale. Despite the many no parking signs posted throughout the community, West points out that parking on the grass continues to be an issue, especially around the schools. BSTD has requested increased policing of grassy areas that flank the schools during carpool periods when school is in session. Ultimately, the Board believes that tickets aren't the an-

swer—the solution is inspiring residents to take a personal interest in keeping the community beautiful and educating them on the financial impact of frequently replacing damaged sod.

Along the same line, the Bloomingdale Special Taxing District currently allocates approximately \$25,000 annually for litter collection. "Littering has increased to the extent that we need collection five days per week," said West. Litter collection is a combined effort between Valley Crest (the company providing grounds maintenance) and H&R Neighborhood Services (the folks in the golf carts). BSTD hopes residents of

all ages will become more interested in keeping their Bloomingdale a clean and attractive place to live. The BSTD Board hopes to enlist the help of teens in the area who may want to take up the cause and potentially earn community service hours through their efforts. More information will be forthcoming.

The BSTD Board of Trustees meets monthly. All meetings are open to the public and are held at the BSTD offices located at 3509 Bell Shoals Road. Visit the BSTD website for more information, including meeting records and the FY2014 budget: <http://bloomingdaletaxingdistrict.org>.

## 2013 BHA membership drive continues

**Bloomingdale needs your support**

The Bloomingdale Homeowners Association needs your support to continue with the many programs and activities funded solely by your annual \$25 contribution to our 2013 membership drive. While membership figures to date are promising, we are still well short of where we need to be for the year. Remember, 100 percent of collected dues go back to our community.

Again, we would like to thank those who have already joined, donated to our scholarship fund, or purchased a "Neighborhood Pride" license plate. If you haven't received your notice, you can still pay by check made payable to BHA, PO Box 7221, Brandon, FL 33508. An easier method is to use our new PayPal option. Go to [www.bloomingdalegazette.com](http://www.bloomingdalegazette.com), look for the PayPal link, and follow the simple instructions provided. A \$1 processing fee is added.

## Jump head

From page XX

- If you are an athlete planning to continue playing a sport in college, register with the NCAA Eligibility Center

### Seniors

- Narrow down the colleges being considered and visit colleges on "short list." Make decisions regarding early decision or early action programs. Register for and take (or retake) the SAT and/or ACT, if not already done.

- Complete and submit college applications prior to deadlines.

- Complete and submit scholarship applications prior to deadlines. Work with parents to complete/submit the FAFSA.

- Request transcripts and letters of recommendation.

- Meet with a counselor to verify that graduation requirements will be met on schedule.

### WORK GUARANTEED

## Don's Bay Area Painting Inc.

**QUALITY WORKMANSHIP**  
ALL PHASES  
ALL APPLICATIONS  
Interior • Exterior  
Pressure Cleaning  
Repaint Specialist

**WE MEET OR BEAT OUR COMPETITORS' PRICES**

**813.661.9006**

License #PA 2653 • Bonded & Insured

**20 Years In Bloomingdale**

**www.donspainting.com**





# Bloomingtondale Regional Public Library is “Mad About Science”

BY KAYLA HAYES

Children from kindergarteners to fifth graders, along with their parents, gathered at the Bloomingtondale Regional Public Library on Saturday, July 20, for Mad About Science, a fun science program presented by Mad Science of Tampa Bay. Children learned about the wonders of science that made a penny come to life in dry ice, produced the “fluff” found in a baby’s diaper through chemical reactions, tasted a burp, and many more exciting things.

When asked about their favorite part of the presentation, several children in the audience – including brothers Matthew Perez, 8, and Alexander Perez, 10 – responded, “the one where the fire disappeared.”

Children learned that science sometimes seems like magic.

“It was awesome; it was so cool,” commented Matthew.

Mad Science representative and presenter, Alyssa Rucker – also known as “Hurricane Alley” – said, “We teach the kids the beginnings of science and

chemistry.”

Mad Science is an independent franchise based in Lithia that extends to all of Hillsborough and Pasco counties. They can be hired for birthday parties, large group events, summer camp programs, in-school workshops and more. Information is available on their website: [www.madscience.org/tampabay](http://www.madscience.org/tampabay).

The library’s Teen Advisory Board (TAB) volunteers organized the July event.

“It was fun for me. Kind of hands-on because we got to help out, not only with the kids, but with the setting up and stuff,” commented TAB volunteer, Aaron Hosemann. TAB volunteers are high school students from numerous area high schools.

The Bloomingtondale Regional Public Library has summer programs running up until Aug. 19 for preschool, children, teens and even adults. “Summer Programs @ your library” pamphlets are available at the library, located at 1906 Bloomingtondale Ave. Visit [hcplc.org](http://hcplc.org) for additional information and hours of operation.



KAYLA HAYES

Alyssa Rucker (a.k.a. “Hurricane Alley”) blends together science and fun for the children at the Bloomingtondale Regional Public Library.



KAYLA HAYES

“Hurricane Alley” asks student Robbie Currier to help her out with a science trick during the Mad About Science presentation. Currier helped Hurricane Alley squeeze a hard-boiled egg named “Eggbert” into a flask that was seemingly too small, by using fire and air pressure. Hurricane Alley cautioned Currier, “Don’t eat it!”

# Redstone moving forward with big box development; residents not backing down

BY KAYLA HAYES

At the June 10 public meeting with District 4 County Commissioner Al Higginbotham, there was talk from Bloomingdale residents, including members of CAN-DO, the Coordinated Active Neighborhoods Development Organization, about what the next step should be concerning the big box development on Bloomingdale Avenue. With pressure from Higginbotham to meet with his constituents, the de-

velopers finally sat down with nine representatives from CAN-DO for a private meeting on June 28.

“Basically the developer came in and laid out the facts of what they are doing,” said Rodney Biddle, a CAN-DO representative who attended the meeting. Although Biddle lives in Fishhawk, he has friends in the Bloomingdale area, and plans on buying a home in the community sometime within the next year.

“The developers are

not really asking permission from the community,” Biddle continued. Redstone is locked-in on building something on the 43-acre plot next to Bloomingdale High School, and confirmed that Wal-Mart is one of the retailers they are talking with for the big box store. They are also in discussion with a potential developer for the apartments, which may turn out to be four-story complex. Redstone did offer to make minor

design changes to their plan to help ease some of the community’s concerns, including a 50-foot easement between their project and the Lithia Oaks neighborhood, and 16-foot-tall lights in the parking lot instead of 40-foot-tall lights. CAN-DO encouraged the developer to meet more publicly with residents following the June 28 meeting, but the group does not foresee that happening.

August could be a big month for the big box

project – not only for the developer, but for CAN-DO. Biddle confirmed that CAN-DO is working to become a legal entity so that they can fundraise in the future should they decide to take legal action against the developer.

“I don’t know if we are taking the ‘attorney route,’ but I know we have been talking to an attorney,” said Biddle. CAN-DO wants to be ready in August as Redstone moves forward.

Biddle suggested, “We

need to get our legal organization set up and enough community support behind us to move forward. We don’t want to do anything without the full community behind us.”

CAN-DO would like to collect a list of community resources and people with specific talents to aide their mission. Residents are invited to direct comments and inquiries to CAN-DO via email: [bloomingtonbigbox@gmail.com](mailto:bloomingtonbigbox@gmail.com).

## Reading, writing and MRSA?

BY KIM MILLER

With the return to school and work comes runny noses, coughing, sneezing, contaminated work surfaces and exposure to more bacteria than we care to know exists. One common bacteria that is both resistant and potentially life threatening is MRSA (methicillin-resistant Staphylococcus aureus). It is not necessary to alarm your children to teach them some easy habits that can prevent infection.

MRSA can cause a variety of skin infections. It is termed resistant because it has become resistant to antibiotics commonly used to treat ordinary staph infections.

Most often MRSA causes mild infections on the skin. The infection can appear to look like a blister, spider bite, or just a reddened skin area with a honey colored crust. Be suspicious of cuts that are swollen, hot and filled with puss. MRSA can also cause more serious skin

infections. It can be life threatening when the bloodstream, lungs, urinary tract, and surgical wounds are involved.

What causes MRSA and how does it spread? Staphylococcus is a common bacterium that lives in our bodies. Plenty of healthy people carry it without being infected by it, with 25 to 30 percent of the bacteria living in our noses. Staph is one of the most common infections in the United States, and it becomes a problem when it gets into the body, often through a cut. Treatment for MRSA varies depending on where the infection is found on or inside the body. Most types of staph are successfully treated with antibiotics. But over time some strains of staph have become resistant to treatments that used to destroy it, like MRSA. It is resistant to many antibiotics: methicillin, amoxicillin, penicillin, oxacillin and many others. Do not attempt to treat the infection on your own, it just

may worsen and spread. After being prescribed an antibiotic be sure to take all the medication for optimal treatment.

MRSA is usually spread by skin-to-skin contact, and is common among people with who have low immune systems. There are “five C’s” that make the perfect environment for MRSA or staph to be transmitted:

1. Crowding
2. Contact
3. Compromised skin (cuts or abrasions)
4. Contaminated surfaces
5. Cleanliness (lack thereof)

The best way to prevent MRSA is to wash hands regularly (after contact with others, sneezing, coughing, using the restroom, preparing food, and blowing your nose); use antibacterial soap/lotion; avoid sharing personal items (towels, razors, etc.); keep cuts and scraps covered until healed (especially when going outside the home); and, wash and dry soiled clothes thoroughly.



[www.oakfieldlanes.com](http://www.oakfieldlanes.com)  
**oakfield lanes of brandon, inc.**  
“Brandon’s Family Bowling Center”  
1001 Oakfield Drive, Brandon, FL 33511



**2013-2014 FALL BOWLING LEAGUE**  
**OAKFIELD LANES (813) 681-4783**

DAY	NAME OF LEAGUE	TYPE OF LEAGUE	MEETING DAY/TIME	START DAY/TIME
Sunday - Evening	Dick Stowers	Mixed - 4	August 25 6:00PM	September 8 6:45PM
Monday - Evening	Monday Nite Madness	Mixed - 4	September 9 6:00PM	September 9 7:00PM
Tuesday - Morning	Outback Ladies	Ladies - 4	August 20 9:30AM	August 27 9:30AM
Tuesday - Morning	Bowling 4 Kids	Ladies - 3	August 27 10:00AM	August 27 11:30AM
Tuesday - Evening	Suncoast Ceramics	Mixed - 4	September 3 7:00PM	September 10 6:45PM
Tuesday - Evening	Tuesday Nite Trio	Mixed - 3	August 20 7:00PM	September 3 9:15PM
Wednesday - Morning	Ladies for Schools	Ladies - 3	August 21 9:00AM	August 21 9:30AM
Wednesday - Afternoon	Senior Matinee	Seniors - 4 50+ Years	September 4 12:00PM	September 4 1:00PM
Wednesday - Evening	Alvarez Ladies	Ladies - 4	August 28 7:00PM	September 4 6:45PM
Wednesday - Evening	Oakfield’s Junior Gold	Singles - Youth	September 25 7:00PM	October 2 7:00PM
Thursday - Morning	Splits & Misses	Ladies - 4	September 5 8:45AM	September 5 9:30AM
Thursday - Evening	James Rivard Pontiac/GMC	Men’s - 5	August 29 7:00PM	September 5 7:00PM
Friday - Evening	Sunshine State Federal	Mixed - 4	August 23 7:00PM	September 6 6:35PM
Friday - Evening	Friday Niners	Mixed - 4	August 16 8:00PM	September 6 9:15PM
Saturday - Morning	Oakfield Youth Leagues 5-19 Yrs.	Mixed - 4	August 31 9:00AM	September 7 9:30AM
Saturday - Evening	Saturday Nite Pinbusters	Mixed - 4	September 21 5:00PM	September 21 6:00PM





# A professor of the gentle way of Judo

BY BONNIE DYSON

It's a grey, rainy Saturday morning in July, and the judo room at the Campo Family YMCA is packed with children, youths and adults in judo-gis (cotton jackets and pants) and obis (belts) of all ranks. An 81-year-old, silver-haired man sits at the edge of the mats surveying the action. Like a hawk, he sees everything. And often, like a lion, he roars.

"Grab him and break his balance," bellows "the professor," Ed Maley. "Are you going to kiss him? THROW HIM!" Without hesitation, Maley's students obey. After all, he has 65 years – and counting – of practice, competitions and instruction in the art of judo, attaining an eighth degree black belt and rank of Hachidan. He also holds a sixth degree black belt in karate and O Sensei Jui-Jitsu.

Tom Vann earned a black belt under Maley's tutelage in the late 1980s. He's also the community

service award chairman of Egypt Shrine, which is honoring Maley with its 2013 Community Service Award for service to his country and dedication to teaching judo for more than 50 years.

"He's an outstanding individual and a tremendous person," said Vann, 81. "Ed Maley, he's the ultimate professional in the martial arts. We hope to have many of his students, past and present, at this awards ceremony."

Having taught an estimated 80,000 men, women and children in the course of his career, the professor has had students aplenty. Many have gone on to win national and Pan American championships and Olympic medals. But he is just as proud of former students who grew up to become lawyers, physicians, military personnel and others who contribute to their communities.

For the past 14 years, he – along with a cadre of former students and vol-

unteer instructors – has had a strong presence at the Campo Family, Interbay and New Tampa YMCAs. Eighty to 100 people attend Campo's Saturday classes, which are free for members.

Twelve-year-old student Hannah Wagner says behind the professor's gruffness beats a big heart.

"He's a wonderful teacher, even though he has this tough-guy appearance," said Hannah, who recently won two gold medals in the Junior Olympics in Irving, Texas. She sees the Olympics in her future and says Maley can help get her there, as long as she stays the course.

Maley has practiced rigorously and continually through the years and encourages his students to do the same.

"Basic judo is an art," he said. "It's not a microwave oven. It's something that takes time."

There were no microwave ovens when Maley started judo during



BONNIE DYSON

**Professor Ed Maley instructs young judo participants at the Campo Family YMCA in July. The Professor will be honored with Egypt Shrine's Community Service Award for 2013 in September.**

his high school days in Brooklyn, or when he honed those skills during a 12-year stint in the United States Air Force. Recruited by the Strategic Air Command (SAC) during the Korean War, Maley helped set up a physical fitness and self-defense program for air force personnel, including the crews who flew with nuclear weapons. During his time with SAC, Maley was sent to Japan for eight weeks of specialized martial arts training at Kodokan Judo Institute headquarters in Japan. Upon his return, he taught the techniques to military personnel, and later became a frequent competitor in judo competitions around the world.

In 1959, he moved with his family to Tampa and, in 1963, opened the Flor-

ida School of Judo, where he trained and taught for 40 years.

Maley's credentials, honors and awards run the gamut from local to international. For seven years, he was the undefeated Florida Overall Champion and has been inducted into the Black Belt Hall of Fame, World Hall of Fame and G.I. Hall of Fame for his judo expertise. His titles also include Overall New England and East Coast champion, and undefeated Overall Eighth Air Force champion. Both Hillsborough County and the City of Tampa have declared days in his honor and he has received numerous letters of commendation and thanks.

The professor has no plans to retire, but is grooming his students to teach the "Gentle Way" of

judo.

"My students teach. I guide them."

As Maley packs up and prepares to leave the Campo YMCA, Keith Maley, 58, steps onto the mat. A sixth degree black belt, the professor's son turns and begins to scan the room.

## If you go:

**What:** Egypt Shrine will present its 2013 Community Service Award to Ed Maley

**When:** Sept. 11, 2013. Guests should plan to arrive around 7 p.m. and the program begins at 7:30.

**Where:** Egypt Shrine, at the Ala Carte Pavilion, 4050 Dana Shores Drive, in Tampa  
**Cost:** Free and open to the public

**Information:** on the awards ceremony, call Egypt Shrine at 813-884-8381; on Campo Family YMCA classes, call 813-684-1371.



BONNIE DYSON

**Four-year-old Dylan Dahlback throws 2nd degree black belt Anthony Albano under the watchful eye of Professor Ed Maley at Campo Family YMCA.**



## INs and OUTs What every Bloomington homeowner should know

This month's INs and OUTs is about mediation. Did you know that Hillsborough County provides free mediation services for neighbors needing help resolving issues?

Established in 1978 as the Citizen Dispute Settlement Program, today's Thirteenth Judicial Court Diversion and Mediation Services Community Mediation Program offers an alternative to formal judicial proceedings, and helps to reduce the court's caseload. More importantly, mediation services can help neighbors reach compromises and agreeable resolutions to ongoing conflicts.

Benefits to the program are many. The service is free, confidential, convenient, and almost any case appropriate for small claims, circuit civil, and/or county civil is eligible for mediation. In

80 percent of cases, an agreement is successfully reached. Examples of some normally acceptable complaints are: animal and noise nuisances, landlord/tenant issues (not evictions), and neighborhood disputes.

To request a mediation conference or learn more about the program, go online to [www.fljud13.org/CourtPrograms/MediationDiversionServices.aspx](http://www.fljud13.org/CourtPrograms/MediationDiversionServices.aspx). To contact Mediation and Diversion Services, call (813) 272-5642, or email to [mediation@fljud13.org](mailto:mediation@fljud13.org).

Do you have a question on deed restrictions or other local home ownership requirements? Email your questions to [bloomington.homeowners@gmail.com](mailto:bloomington.homeowners@gmail.com), and check the Gazette for answers.

### Bloomington Special Taxing District

3509 Bell Shoals Road, Valrico, FL 33596  
(813) 684-6667 Office  
(813) 684-2358 Fax  
[BSTD@verizon.net](mailto:BSTD@verizon.net)

David West President  
Joe Liguori Vice President  
Jerome Monette Secretary  
Mike Chanen Treasurer  
Mark Vargo Trustee  
Mark Horst Trustee  
Russell Jones Trustee

# Bloomington-Riverview CERT is ready if disaster strikes

BY MIRIAM LEECH

Neighbors helping neighbors is commonplace in emergencies. Here in Bloomington, residents can count on the Bloomington-Riverview Community Emergency Response Team, or CERT, to take the lead in aiding their neighbors when disaster strikes.

The 14-member, all-volunteer CERT team is prepared to arrive immediately after first responders to provide backup. In a hurricane-prone area like Florida, the program educates volunteers about disaster preparedness for situations specific to their needs. The best responders are equipped to think clearly, remain calm, aid victims, and do such tasks as direct traffic, clear an area, search and rescue, or extinguish small fires.

Volunteers, who come from all walks of life, receive 40 hours of training to become certified members of the team. They undergo training in American Red Cross CPR, use of first-aid kits, and triage both in the classroom and during exercises. CERT members can then provide aid in their neighborhood or workplace following a disaster when professional responders are not immediately available, or by assisting trained professionals.

CERT teams fall under the purview of the Federal Emergency Management Agency's (FEMA) Citizen Corps and Homeland Security. The concept began in Los Angeles in 1985 in



PROVIDED

Bloomington-Riverview CERT volunteers train during a mock disaster exercise.

response to earthquake preparedness. Believing the program applicable in all types of disaster situations, FEMA adopted and expanded the program and materials. The agency's website reports that since 1993 when this training was made available nationally, communities in 28 states and Puerto Rico have conducted CERT training.

Fortunately for the Bloomington area, there have been no disasters in recent history requiring CERT response. When the time comes, Bloomington residents can rest assured CERT will be on hand. According to Bloomington-Riverview Team Leader and founding member, Don Maidlow, "We are just

chomping at the bit and always at the ready." Their area of responsibility ranges from Lithia-Pinecrest Road to US Highway 301 and from Lumsden Avenue to Fishhawk Boulevard.

CERT relies 100 percent on charitable donations for their day-to-day expenses and equipment,

and they are always ready to welcome new volunteers. If you would like to learn more about becoming a CERT volunteer or find out about how you can support the team, visit the team's website at [www.bloomingtonriverviewcert.homestead.com](http://www.bloomingtonriverviewcert.homestead.com), or call (813) 297-4410.

## BLOOMINGTON PAINTING

"A Brush Of Quality"

INTERIOR/EXTERIOR  
PRESSURE WASHING  
RESIDENTIAL/COMMERCIAL

Bloomington Resident-Tod Howard  
FREE ESTIMATES, EXPERIENCED and RELIABLE

(813)654-5646 | (813)966-3601

[www.BloomingtonPainting.com](http://www.BloomingtonPainting.com)

License#PA3694 Bonded & Insured





# Campo YMCA seniors relish their Pickleball

BY MIRIAM LEECH

What do you get when you cross tennis with badminton and table tennis? You get Pickleball; and, that's no joke to the group of senior members who play every Wednesday and Sunday at the Campo YMCA.

"It's fun and good exercise," says Joyce Singer, 68, one of the members of the Silver Sneakers group who plays the popular game. Under the direction of Silver Sneakers Coordinator Kavita Marballi, Pickleball began at the Campo facility last November. It is gaining in popularity, and the group would love to have new players.

Pickleball, as the story goes, got its name back in 1965 from the dog of the man who originated the game, Congressman Joel Pritchard from the State of Washington. Pritchard and his friends improvised a game of badminton with a wiffle ball because they could not find the shuttlecock. And Pickles, the family cocker spaniel, liked to chase the ball and then hide it.

The game is played like doubles tennis, with special Pickleball equipment. The paddles come in four types: graphite, wood, composite, and aluminum. The ball is perforated plastic, similar to a wiffle ball. Pickleball is played on a 20-by-44 foot court, with the net set at 34 inches in the middle and 36 inches on the ends. The game is played to a score of 11, with a win by one point.

In May, the Campo Pickleball team held a tournament at the Gardenville Community Center in Riverview. Campo players wore T-shirts saying, "We Relish Pickleball," and the top three teams received jars of pickles as prizes.

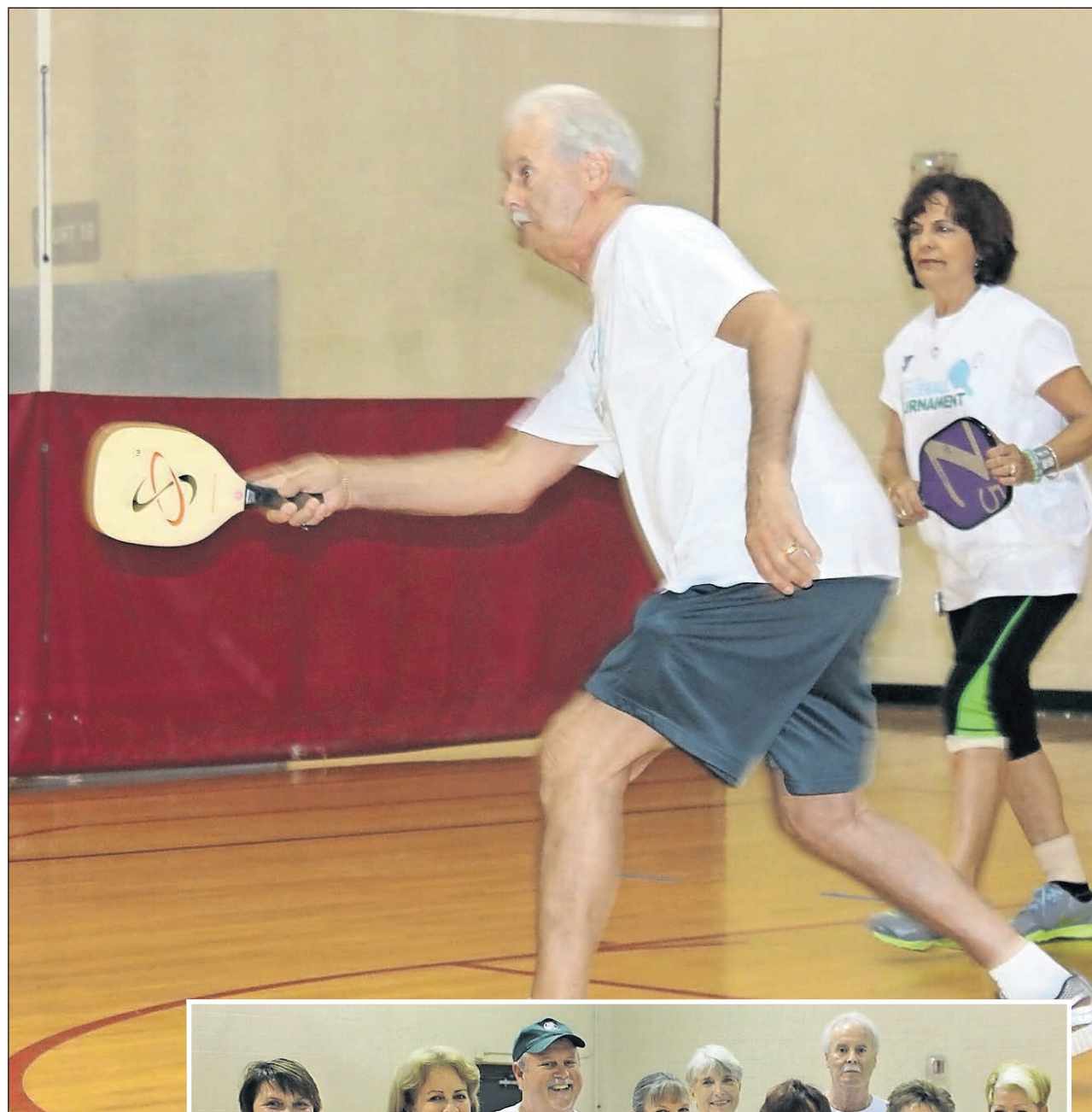
Husband and wife Jan and Debbie Coppi began playing in January. Said Debbie Coppi, "Some players have a background in tennis or racquetball, but really anyone can play." According to Marballi, the game helps strengthen balance and coordination, burns calories and improves heart health.

The Campo Family YMCA invites the community to an upcoming Pickleball Clinic on Wednesday, Aug. 21, at 1 p.m. Beginner to intermediate levels are welcome to learn from a coach from the Hillsborough County Parks, Recreation and Conservation Department. YMCA membership is not required; bring a driver's license and arrive 30 minutes before the clinic starts to sign a guest waiver.

This summer seniors play Pickleball on Wednesdays from 1-3 p.m. and Sundays 2-5 p.m. Starting in September they will be playing Mondays, Wednesdays, and Fridays from 12-3 p.m. Contact Kavita Marballi at (813) 684-1371, ext. 212, for more information.

**Above right, Pickleball teammates Jan Coppi and Eileen Kaminski are regulars on the court at the Campo YMCA.**

**At lower right, Campo YMCA Silver Sneakers members have fun playing Pickleball each week and get great exercise at the same time.**



MIRIAM LEECH





# Crumb de la Crumb awarded Small Employer of the Year 11

BLOOMINGDALE GAZETTE ♦ AUGUST 3, 2013

BY KAYLA HAYES

Cindy Shoemake, owner of Crumb de la Crumb bakery in Valrico, has working in the baking industry for more than 10 years. She started with her oldest son's second birthday cake. When she wasn't satisfied with a large grocer's version of a "monster truck cake," or the price of other bakeries in the Tampa Bay area, she decided to make the cake herself.

"It wasn't the prettiest cake, but it tasted good!" said Shoemake.

Her dedication to her son's monster truck cake created a snowball effect of friends, and their friends, asking for cakes by Cindy. Della's, on Oakfield, approached her six years ago, and she has been in the business ever since.

Shoemake was working from her home be-

fore she opened Crumb de la Crumb two years ago on June 25. Crumb de la Crumb is a family bakery, with Cindy at the forefront. Shoemake's parents, owners of the first home built in Bloomingdale East in 1980, often help her in the bakery, along with her three children who can be seen in the kitchen and working with the customers. Shoemake calls her daughter the "Kitchen Manager," because she can bake anything in the store.

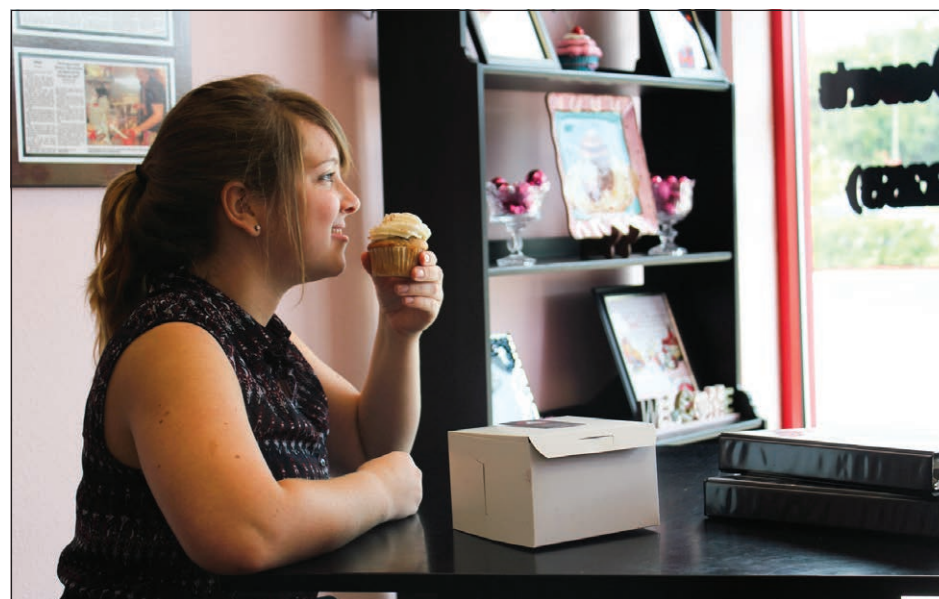
Crumb de la Crumb was recently awarded Small Employer of the Year by The Able Trust organization of Tampa Bay for "their substantial efforts to improve employment opportunities for people with disabilities." Shoemake had no idea that she was nominated for Small Employer of the Year, so

the award came as a surprise to her. The bakery has worked with nine interns so far, most struggling with ADD or ADHD. They learn to bake cupcakes, make frosting, wash dishes, work with customers, and more.

"I think the biggest thing they learn is responsibility. A lot of them, this is their first job," said Shoemake.

The interns are paired up with different business through a program at their school. Most come to the bakery from Durant High School and many ask to come back for a second internship. One student from Durant interned three times and was eventually employed by Shoemake more than a year ago.

Crumb de la Crumb is located at 1017 E. Bloomingdale Ave. and



KAYLA HAYES

**Bloomingdale resident, Kate Cameron, samples Crumb de la Crumb's Red Velvet and Hummingbird cupcakes with cream cheese frosting. "This is my first time at Crumb de la Crumb, and the cupcakes are as sweet as they look!"**

specializes in one-of-a-kind gourmet desserts. "We cater to bridal

events, birthday parties, social events and receptions."

The bakery can be reached at 681-CAKE (2253).

## Local school supply collection events

### 11th Annual FANG Back to School Festival

Aug. 4, 1-4 p.m. inside the Campon Family. More than 65 local business booths, samples from 10 restaurants, music, extracurricular demonstrations, free giveaways and door prizes. Admission is free but \$10 worth of new school supplies or a \$10 cash donation per family is requested. The supplies will benefit the Y's backpacks for school children collection effort (see below).

### YMCA Backpack

### Outreach Event

Aug. 10, 9 a.m.-1 p.m., YMCA Camp Cristina, 9840 Balm Riverview Road in Riverview. Tampa YMCA and ECHO team up to provide backpacks and school supplies to students in qualified families. Volunteers will be needed the week of the event to sort items into backpacks. For information on volunteering and donating items, contact ECHO

representative, Kathy Collins at [kathy@echofl.org](mailto:kathy@echofl.org) / (813) 685-0935; or YMCA representative, Sandy Acevedo at [sandy.Acevedo@tampaymca.org](mailto:sandy.Acevedo@tampaymca.org) / (813) 684-1371. (Qualified families must be pre-registered in order to participate.)

### Around town

### Hairspray the Musical

Aug. 9, 10 and 11 at Music Showcase in Brandon. Full-length production put on by summer camp students ages 13-18. Call (813) 490-ARTS or visit [www.faopa.org](http://www.faopa.org) for show times and tickets.

### 2013 Cannonballpalooza!

Aug. 17, 6-10 p.m., Brandon Sports and Aquatic Center, 405 Beverly Blvd. in Brandon, presents its End of Summer Celebration and Cannonball Competition. Food Trucks, Beverage Tent, DJ and FUN! FREE to the Community unless participating in Cannonball Competition. Visit BSAC at [www.mybsac.org](http://www.mybsac.org) or call Member Services at (813)

689-0908 for more information.

### "Rover"-ssance Fair

Aug. 21. Canine Cabana, 9708 Carr Road in Riverview, hosts its first Renaissance-themed event, including friendly canine competition and Holy Quail feast. Contact Canine Cabana at (813) 672-9663 or visit [www.CanineCabana.biz](http://www.CanineCabana.biz) for event information.

### Bloomingdale

### Regional Public

### Library happenings

**Composting with Worms the Easy Way (adult program).** Aug. 6, 6-7 p.m. Join local naturalist, Diana Kyle, as she presents this entertaining and educational program on composting with worms.

**Tricky Dogs Show (Grades K-5).** Aug. 7, 1 p.m. & 3 p.m. shows. Hilarious circus-style dog comedy act starring a group of tricky little dogs and their pet human. Participants

**SCHOOL, Page 12**

## New trash collection program gets rolling

Beginning Aug. 1, a 95-gallon gray roll cart for garbage and a 65-gallon blue roll cart for recycling will be delivered to homes in Bloomingdale and throughout the Hillsborough County Solid Waste service area. Be sure to store the carts until the new service begins. Instructions on cart usage, collection days, and cart usage start date will be delivered with the carts.

The new blue cart will be used for all materials accepted for recycling, replacing the two-bin approach used currently by residents.

More items will be accepted with the streamlined recycling method:

- Paper and cardboard items, including junk mail, cereal and food boxes
- Plastics Nos. 1-7 (look for the symbol on the container)
- Glass
- Aluminum cans and foil
- Tin/metal
- Aseptic containers and gable top cartons (milk and juice boxes)
- Bagged Plastic Film (for example, grocery bags)

To learn more about the new collection program, visit [www.HillsboroughCounty.org/TalkTrash](http://www.HillsboroughCounty.org/TalkTrash), or call the Hillsborough County Public Utilities Department at (813) 272-5680.



## Bloomingtondale Community Station Notes

### *Safe driving is a must with school back in session*

#### HCSO COMMUNITY RESOURCE MASTER DEPUTY CURTIS WARREN

School starts this month. Obey the laws—protect our kids!

Following are two very important musts to follow:

1. Drivers must stop both ways for school buses making stops for children on roads without median dividers. Example: Bloomingtondale Avenue.

2. Drivers must not speed in school zones. There are no excuses for speeding, especially in school zones. Speeding fines are doubled in school zones.

A serious fact about teen drivers: traffic crashes are the number one cause of death for Florida's teenagers and this cause of death is pre-

ventable in nearly 80 percent of the crashes. Change that 80 percent into the number of teenage lives it represents, and the number of families and friends that are directly affected is in the thousands.

#### Special problems on

##### Nature's Way

At the last Sheriff's Bloomingtondale Area Community Council (BACC) meeting members were updated on three serious items of concern on Natures Way.

1. Drivers are breaking county parking laws by parking on grassy areas where "No Parking" signs are posted, such as those on Natures Way and Culbreath Road near Alafia Elementary School. These signs are post-



Curtis  
Warren

ed to not only provide safety for students and other residents but also to prevent serious damage to the grass. Citations will be written for anyone violating these restrictions.

2. Littering. Bloomingtondale's Property manager and staff collect a large amount of trash each week. Please do not throw trash on the roads and greenways. Again, it is a violation of county laws and citations can and will be written. Save your money and throw your trash in a can.

3. The third problem is again, speeding along Natures Way. In July there were

two more vehicle accidents involving teen drivers, one at the same area where a fatal accident happened a short while ago. Parents, talk to your teens. Speeding can result in expensive car repairs or may it can cost a life.

#### Special Thanks

On behalf of myself, Sandy and the many deputies and detectives who work out of the Bloomingtondale Community station, I would like to extend our special thanks to everyone in the Bloomingtondale and surrounding area who has provided us with outstanding support over the last three years in the new Community Station. We're all looking forward to another great year working together.

## SCHOOL

From Page 11

must pick up a ticket at the Ask Me Kiosk after 12 p.m. Limited to 120 participants.

**After Hours Diagon Alley:** Back To Hogwarts School Shopping (Grades 3-8). Aug. 9, 6:45-10:45 p.m.

Harry Potter event where kids shop for back to school items needed for the famous School of Witchcraft and Wizardry. Crafts, snacks and, at the end of the night, butter beer at Leaky Cauldron or ice cream Florean at Fortescue's Ice Cream Parlour. Children will need to be signed in and out by a parent on the night of the event. Register at the Ask Me Kiosk or by calling 273-3652.

**Family Center on Deafness Telephone Distribution (adults).** Aug. 16, 10 a.m.-Noon, Florida Telecommunications Relay, Inc. provides free specialized equipment and training to qualified Florida residents who are deaf, hard of hearing or speech impaired. The equipment enables them to place and receive phone calls.



Scott Arnold, DMD, FAGD

## Arnold Dentistry

**Dr. Scott Arnold** maintains many area family smiles. He is first and foremost a family dentist; however, he has the extra training and technology to give your smile that extra help if you want or need it. His team will make you feel welcome and is committed to your comfort. **We accept most insurance.**

**Call to schedule your FREE smile evaluation today!**



**330 EAST BLOOMINGDALE AVE., BRANDON**  
Bloomingtondale Executive Park (1/2 block west of Bryan Rd.)

**(813) 689-1529**

**MyArnoldSmile.com**