

In This Issue

Little League In Full Swing 4

Property Manager's Report 6

Alafia Elementary Variety Show 7

Black Ice 8

Miss Shirley 10

MOMS Club 14

Bloomingdale West Rec Center 16

Little League/YMCA Partnership 19

Bus-Stop Behavior . . 20

BHA Board of Directors Seeks New Members

The Bloomingdale Homeowners Association (BHA) is looking for community members interested in joining its Board of Directors. A sincere personal desire and commitment to becoming directly involved in improving the Bloomingdale community are the main qualifications. Anyone interested may call Randy Wolfe, President of the BHA, at 681-2051.

Bloomingdale Homeowners' Association 1999 Membership Drive

The Bloomingdale Homeowners' Association (BHA) annual membership drive is in progress, with notices scheduled to arrive in residents' mailboxes early this month.

The BHA has the distinction of being the only homeowners' association representing all of Bloomingdale's residents. The BHA Board of Directors, composed of non-paid volunteers residing in the community, holds monthly public meetings to hear and discuss issues and concerns directly affecting our neighborhoods. All Bloomingdale residents are invited to attend the meetings, held on the second Tuesday of each month at the Bloomingdale community office at 7:00 pm.

Through the collection of voluntary annual dues, the BHA is able to serve the residents of Bloomingdale in many capacities. All moneys collected from dues are put back into the community through such established and proven programs as the Bloomingdale Mobile Watch, the Neighborhood Involvement Program and the Deed Restriction Enforcement Program.

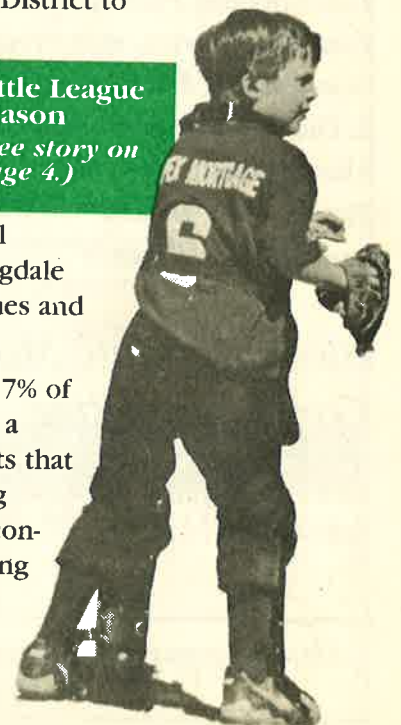
The BHA is represented in Hillsborough County's Neighborhood Registry program, ensuring that Bloomingdale residents, through the BHA, are informed of planning and zoning actions that will affect our community. The BHA provides our community with an official voice that speaks authoritatively to Hillsborough County government officials and developers. In March of 1998, the efforts of the BHA were notably the single most effective factor in convincing the Hillsborough County School District to keep Bloomingdale West in the Bloomingdale Senior High School District.

The BHA has been the residents' advocate for new sidewalks, streetlights and road signs needed in our community.

The BHA provides a community office for all Bloomingdale residents, and owns The Bloomingdale Gazette, our forum for neighborhood news, issues and interests, now in its' 18th year of publication.

A recent community survey showed that 89.7% of residents who responded felt that the BHA was a valuable asset to our community. The BHA trusts that current members will see the value in renewing their membership, and that non-members will consider responding positively to the drive by joining the association via return mail, or by contacting the community office at 681-2051 to learn more about our community's voice - The Bloomingdale Homeowner's Association.

Little League Season
(See story on page 4.)



Your Inside Connections

The Bloomingdale Homeowners Association, Inc.

3509 Bell Shoals Rd.
Valrico, FL 33594
Voice Mail: 681-2051
E-mail: BHA-INC@ALTAVISTA.NET
(no website)

Randy Wolfe, *President* 681-2051
Ted Grable, *Comptroller* 685-7193
Patricia Radel, *Director* 681-2051
LaWayne Wyatt, *Director* 685-2072
Ann Underwood, *Director* 681-2051
Pam Liguori, *Director* 681-9655

Property Manager:

DPMI 684-6617

Bloomingdale Special Taxing District

Tom Snelling, *President* 681-9186
Tom Mackiewicz, *Vice President* 653-4145
Don Cassels, *Treasurer* 681-8855
R. Dickey, *Corresponding Secretary* ... 689-2177
Alice Burleson, *Recording Secretary* .. 685-1076
Tim Golden, *Trustee* 653-1337
Paul Almeida, *Trustee* 661-2018

Bloomingdale Mobile Watch Core Committee

LaWayne Wyatt, *Coordinator/Scheduler* 685-2072

Mobile Watch (Continued)

Paul Kelmer, *Treasurer* 681-9701
Tony Diolosa, *Equipment Manager* ... 681-1146
Steven Heckel, *Membership Chairman* 654-4266
David Guy 681-5943
Paul Warr 685-7883

Meetings

All meetings take place at the Community Office at 3509 Bell Shoals Rd. These are monthly public meetings and all Bloomingdale residents are invited.

BHA Board of Directors

Second Tuesday of the month at 7:00 p.m.

THE BLOOMINGDALE GAZETTE

Bloomingdale Gazette Staff

Laura Frazier *Editor*
Mack Austin *Associate Editor*
Elton Dumont *Restaurant Critic*
Paul Almeida *Feature Writer*

Published by Manatee Media, Inc.

P.O. Box 271880 Tampa, FL 33688-1880

Phone: (813) 964-1919 Fax: (813) 963-5876

Diane Mathes *Advertising Director*
Mark Mathes *Publisher*
Kathy Tidler *Advertising Sales*
Anissa Camp *Managing Editor*
House of Graphics ... *Design & Production*

Share your news with the community! Write to Editor, at 3509 Bell Shoals Rd., Valrico, FL 33594 or fax to (813) 681-2051

Take Your Business To The Next Level

Is your computer system set up to enhance efficiency and maximize productivity?

FUTURENET TECHNOLOGIES provides complete technology solutions for businesses ranging from small office/home office configurations to multi offices spread throughout the United States

- 15 Years Experience with Fortune 500 Companies
- Certified Network Integrators • Analysis, Installation, Training, and Ongoing Support
- Novell and NT Specialists • Honesty and Integrity

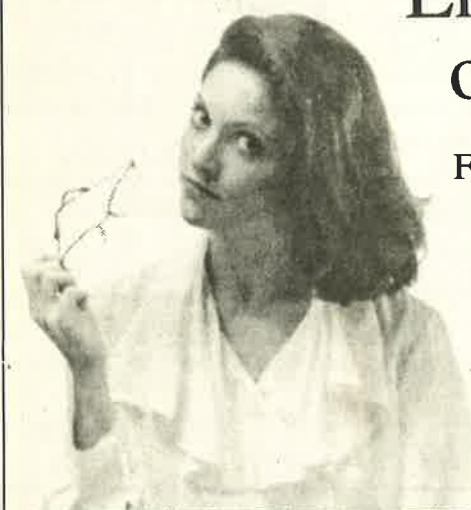


Call Today for a FREE Consultation & Analysis and 15% Off Price of Services



We Do the Job Right the First Time!

FUTURENET TECHNOLOGIES
NETWORK & INTERNET SYSTEMS EXPERTS
689-4022



End that on-again, off-again relationship.

For many people it's goodbye to your glasses! Now a simple, painless, outpatient procedure called Lasik can correct near-sightedness, farsightedness, and astigmatism in just minutes.

You can trust the experts at Brandon Eye Associates to perform your surgery safely and professionally. The results we have been achieving with Lasik are phenomenal!

So make a date with Brandon Eye Associates and take a look at life on your own!

Call now to attend our FREE Lasik Seminar on April 22 at 6:30 p.m.

Lawrence C. Taylor, Jr. M.D. • Roger J. Gstalder, M.D. • Carol M. Marquis, O.D.

BRANDON
EYE ASSOCIATES

Oakfield Business Center • 1463 Oakfield Dr., Suite 113 • 684-2211



REAL ESTATE UPDATE

By Luana Russell

MULTIPLE LISTING SERVICE

QUESTION: Would you explain how the Multiple Listing Service (known as MLS) works?

Under this system, the seller lists his home with only one REALTOR member of the regional MLS. A comprehensive listing form is filled out, and a picture is taken. This information is sent to all member-offices. All appointments are coordinated through the originating office. This gives you greater exposure than if your house is listed with only a single REALTOR.

As the seller, you pay only one commission. The REALTOR with whom you list the house receives the commission and shares it if another REALTOR produces the buyer.

MOTIVATIONS FOR BUYING

QUESTION: Why is there always such a big demand for single homes?

Strong forces are keeping the single home market very much alive. Buyers are convinced that home ownership is worth the financial sacrifice for environmental reasons. A better place for their family to live.

A second powerful influence is inflation. Buyers are convinced that the housing inventory is too short to see any significant over-supply or any major reduction in value in their lifetime.

Another influence, not to be ignored, is retirement. In many cases, home ownership provides a solid base for retirement.

Luana
RUSSELL

Five-Star Service

Coldwell Banker Residential Real Estate, Inc.
889 E. Bloomingdale Avenue
Brandon, FL 33511
662-1610 or 685-8545

Little League Season In Full Swing

by Mack Austin

*Y*ou can feel it, you can taste it, and you can definitely hear it. Spring baseball in Florida is going strong. Just check any of the sports news. Drive to any one of the many spring training cities in Florida.



Evan Leake, a Bloomingdale Little League Minor B player shows the determination of a Major Leaguer as he prepares for a throw to home plate. Photo by Mack Austin

Better yet, take in a game at your local Little League Park. Bloomingdale Little League Park on the corner of Bloomingdale Avenue and Culbreath Road offers a wide variety of games this season. The League has over eight hundred players this year, and the park looks great. There a concession stand open when games are being played.

Bloomingdale Little League has a full range of age groups for boys and girls. Baseball starts at T-Ball and goes on up to Big League, which is 16 to 18 year olds. All levels of girls' softball are available. Games are played

on weeknights and all day on Saturdays. The Big League plays on Sundays. Many games are played against teams from other local leagues.

So, enjoy the beautiful Florida weather. The games are free. Parking is free. The excitement is everywhere. Take your pick—fun filled T-Ball or intense Senior League softball or baseball. It is America's greatest pastime and we're living right in the middle of it. Get out to a game soon!

Editor's note: Motorists are asked to use extra caution when driving in the Little League park area, especially on Saturdays and weeknights when games are being played

Welcome to Bloomingdale

On January 26, 1999, Bloomingdale residents Anne and Matthew Smith became the proud parents of Ethan James Smith. Welcome, Ethan! Our best regards to the Smith family.

Heidi and Robert Mozina of Bloomingdale are thrilled to announce the arrival of Samantha Elizabeth Mozina. Congratulations and best wishes are in order for the entire Mozina family.

Ed Rahal, DMD

GENTLE DENTAL CARE FOR THE ENTIRE FAMILY



654-3399

Insurance Accepted



3646 Lithia Pinecrest Road, Valrico

The patient and any other person responsible for payment has the right to refuse to pay, cancel payment or be reimbursed for payment for any other service, examinations or treatment, which is performed as a result of and within 72 hours of responding to the advertisement for the free, discounted fee or reduced fee service, examination or treatment. Need must be determined by the doctor.

FOR THE TIMES WHEN YOUR TLC IS JUST NOT ENOUGH

...There Is Animal Medical Center.



At Animal Medical Center, we not only include tender loving care, we also offer every health service your family pet will ever need. Equipped with the latest technology, such as intravenous therapy, EKG monitors, and in-house lab, we are the only full facility animal hospital in the Brandon/Valrico area. As an AAHA certified hospital, Dr. Jim Antunano and his experienced staff have been serving local pet owners for over 10 years.

Our services include:

- Orthopedic surgery ■ Dentistry
- Soft tissue surgery ■ Grooming
- Boarding ■ Special diets ■ Annual vaccinations & comprehensive physicals

Don't forget...Every pet needs a vet!



1102 E. Bloomingdale Ave. ♦ Valrico, Florida
(813) 654-6222



Victoria Center Presents Baywinds East Classes in the Brandon Area

Schedule of classes are as follows:

Apr 13	Healing with Herbs
Apr 21	Holistic Health Alternatives
Apr 24	Running on Fast Forward?
Apr 27	Grow Orchids
May 4	Turn Travel Into \$\$\$
May 11	Meditation Techniques
May 14	Friday Salon for Singles
May 18	Start a Cleaning Business
May 19	Social Security Disability Claims
May 25	Bankruptcy Law Workshop
Jun 1	Art of Feng Shui
Jun 4	Intro to Astronomy
Jun 5	Running on Fast Forward?
Jun 8	Creative Memories
Jun 9	99 Ways to Jumpstart Your Writing
Jun 15	Write & Sell Magazine Articles
Jun 22	Grow Your Own

BAYWINDS OPEN HOUSE
April 10th
10 am - 12 pm

Victoria Center
521 Wilbur St.
Brandon, FL

Questions? Please Call Us (813) 643-2113
A Place to Restore your body...your mind...your spirit...

**Bloomingtondale
Special Taxing
District**

**Property
Manager's
Report**

February 1999

Submitted by Devney
Property Management, Inc.

1. Irrigation: Brandon Irrigation repaired a broken valve for the Culbreath system, reinstalled the main line to zone one for the River Crossing system and replaced the pump and pump control box for the Garnet system; DPMI replaced the solenoid on zone four for the John Moore system.

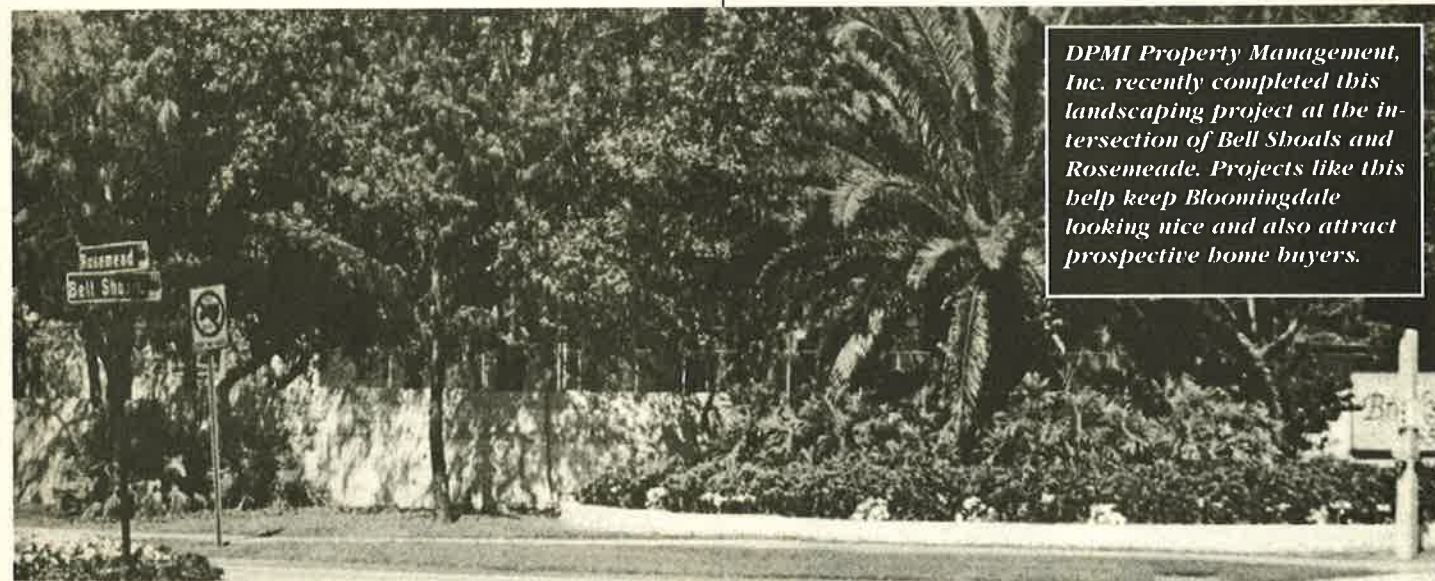
2. Landscaping: Tree Mart replaced three dead palm trees; Neighborhood Pest Control sprayed the newly plugged areas for crabgrass; Florida Landscape Authority finished their contract by trimming all the palm trees; Greenturf started their new contract; A & W Lawn Maintenance cleaned the vegetation off the walls on John Moore, brush-hogged four areas on Natures Way, installed new St. Augustine sod on Canoga

Park and landscaped the south side of the Rosemead entrance.

3. Miscellaneous: Chris Wurtzel repaired three broken columns on Culbreath; DPMI inventoried the Heritage Park area including irrigation; DPMI sprayed Rid-O-Rust on the walls on Nature's Way to eliminate the rust stains; DPMI painted over the graffiti on Glenhaven, John Moore, Nature's Way and Culbreath walls; DPMI upgraded the irrigation on the south side of the Rosemead entrance by adding five spray heads, capping off two rotors and two spray heads and adjusting all the risers; Signs by Mineo repainted the new entrance way sign at the Treeline entrance.

4. In the land of eat, drink and pitch out the window: DPMI picked up 25 bags of litter, two hubcaps, four onions, 39 cucumbers, two cellular telephones, a raccoon, a folding chair, a large flashlight, a football, three pairs of socks and \$1.12. The Bloomingtondale premium beer of choice for February was Corona.

Photo by Mack Austin



DPMI Property Management, Inc. recently completed this landscaping project at the intersection of Bell Shoals and Rosemead. Projects like this help keep Bloomingtondale looking nice and also attract prospective home buyers.

Alafia Elementary's Sixth Annual Variety Show

Over 130 children participated in Alafia Elementary's sixth annual Variety Show, held at the school in March. Alafia's music teachers Carla Causey and Carol Shaw planned and orchestrated the popular talent show with the help of parent volunteers, teachers, and the custodial staff.

"The hardest part for Mrs. Shaw and I is narrowing down all the contestants in the preliminary auditions, which are necessary due to time limitations," says Mrs. Causey. "We try to put together a variety of acts that represent the multitude of talents displayed in the auditions".

In addition to the

Alafia Elementary students await their turn to take the stage at the school's Sixth Annual Variety Show.



many talented singers, musicians, dancers, acrobats and comedians performing in the show, this year's entertainment included such impressive acts as Lawrence Ross the math whiz, Victoria Piatt on her unicycle, Matthew Woodard's comedic impersonation of TV character Urkel and a rousing grand finale by yo-yo expert Kyle Simpson. Alafia's business partner Jeff Shaw of Century 21 Real Estate provided each participant with a Polaroid keepsake photo to take home. Ticket and concession stand proceeds from the show are put into the school's music department fund to purchase instruments and supplies for the children.

**For Information
About Advertising
Call 654-1919**

Why do smart kids fail?

Your child can succeed in school. Our certified teachers help students of all ages build basic skills while developing self-confidence and the determination to

Call 681-1500

- Weak Basic Skills
- Frustration with School
- Lack of Confidence
- No Motivation

HUNTINGTON LEARNING CENTER
Your child can learn.
Independently owned & operated

FCAT, FL WRITES and BENCHMARK Preparation

Brandon Academy
PRIVATE SCHOOL

FULLY ACCREDITED BY THE FLORIDA COUNCIL OF INDEPENDENT SCHOOLS AND THE FLORIDA KINDERGARTEN COUNCIL

- 28 years of Academic Excellence
- Kindergarten Through Eighth Grade
- Enrichment Curriculum
- Low Student-Teacher Ratio
- Before and After School Care



801 Limona Road • Brandon, FL 33510
689-1952 CALL FOR APPLICATION
Teresa (Terry) Curry - Administrator
The Academy does not discriminate on the basis of race, color, national or ethnic origin.

COME & GET IT
Spring Cleaning Special!!
Hard Water? Water Spots? Bad Taste? Bad Odor?

- ✓Improves Taste ✓Eliminates Odor ✓Removes Rust
- ✓Removes Lead ✓Removes Hardness

COUPON REQUIRED
Rent a Culligan Water System
As Low As **\$3.49** A Month
Limited Introductory Offer. Expires 5-10-99

Ask about Free Satellite & Security System

Culligan
THE WATER EXPERTS.

Call Today! 759-6060 Brandon
Since Culligan Dealers are independently operated, offers and participation may vary.

BSHS Double Sessions Threat-Fact or Rumor?

by Laura Frazier

The threat of Bloomingdale Senior High School being placed back on double sessions has circulated through the local rumor mill with increasing alarm for the past several months. The rumors are fueled perhaps by accounts of students squeezing through crowded hallways and adamant parents reluctant to dismiss hearsay lest double sessions be imposed on Bloomingdale High School again.

Bill Person, Hillsborough County School Board's Director of Pupil Administrative Services, would like to bring those rumors to a grinding halt. "It's just not true," maintains Person. "There is absolutely no discussion concerning taking Bloomingdale High School off single session."

Person reports that the 20-classroom addition presently under construction at the school will increase the school's student capacity by 600 pupils. "Bloomingdale currently has a capacity of 1,885 students," says Person. "The existing enrollment is 2,572 students. The new addition will significantly relieve

crowding and bring the capacity up to 2,485 students, which for now is more than enough," says Person.

Person notes that as the new Fish Hawk Ranch High School nears completion, boundaries will be reevaluated to relieve the overcrowding that is inevitably in store for both Bloomingdale and Riverview High Schools. "But we are looking at six years from now until completion of the Fish Hawk School," says Person. "The only other changes presently open to discussion are those in response to the race ratios dictated by the Federal Desegregation Order." Under federal order, the school board is currently evaluating the attendance boundaries of several schools (including BSHS), to determine if a more racially balanced student body could be achieved by amending existing boundaries.

The federal order dictates that the diversity of the student body should directly reflect that of its' home district. Hillsborough County presently has a 23% population of African American residents. BSHS has an enrollment of 11% African American students, considerably lower than recommended. "We would definitely like to see a more racially balanced enrollment," says Person, "and the board is critically evaluating the attendance boundaries in an effort to comply with the desegregation order."

Voted Best Smile - Class of 1997

Former Patients



Erin Krause
King HS



Gabe Heidt
Brandon HS



Trisha Peterson
Bloomingdale HS

NO DOWN PAYMENT

\$98 per mo.

Standard Active Treatment
\$2352 to \$2940
Records Fee \$196
Retainers \$245 to \$380
#08450 #08550 #08750

We Can Make Your Smile A Winner, Too!

Neal A. Stubbs, D.D.S., P.A.
929 Oakfield Dr. • Brandon • 685-3511



Florida's "Black Ice"- It's Not Nice!

by Mack Austin

Florida is one of many states that have a natural phenomenon which usually occurs just after a light rain shower. It is called "black ice."

It occurs when oil and other fluids that have collected on highways and roads are mixed with just enough rainwater to create an almost "icy" surface on the road. Bloomingdale has its share of "black ice".

The danger with "black ice" is that you really don't expect it. It is worst at intersections where cars are stopped for lights or stop signs and fluids drop onto the road surface and accumulate, more so than on long stretches of road. This is why you'll hear cars spinning their wheels at an intersection after a light shower. It is also the reason that when you approach an intersection after a light shower you can experience very



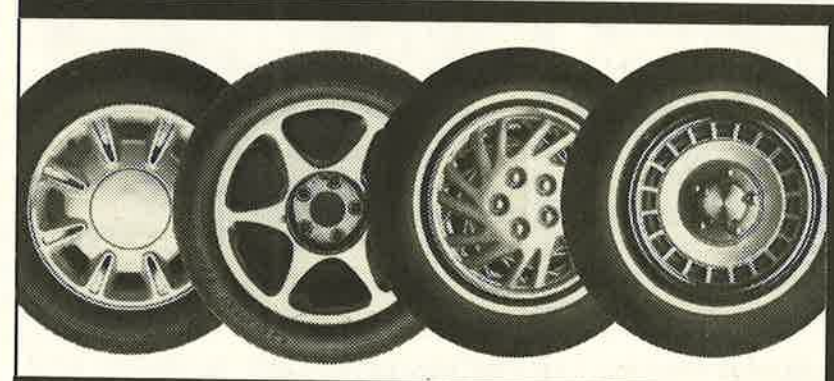
Photo by Mack Austin

quickly the sensation of swerving or spinning, just as if you were on real ice. The best technique in the first instance is to slowly push down on the accelerator when pulling out from an intersection. In the second situation, it is best to slow down before you reach the intersection. Ease on through and do not hit the accelerator hard. In both situations, if your car has antilock brakes most experts say it is best to slowly press them, not to pump them.

Florida has many unique natural phenomena, but "black ice" is one that can catch you off guard very quickly. Don't get in a rush during or after any of these Florida showers. It can result in taking a lot more time than you planned for, especially when you "hit the ice".

LOOK

For
Information
About
Advertising
Call
654-1919



Stephen A. Briggs
Senior Account Agent
LUTC Graduate
Honor Ring

Allstate
You're in good hands.
(813) 681-5303

PREMIER SERVICE AGENT

Allstate Insurance Company
611 E. Bloomingdale Ave., Suite-D
Brandon, FL 33511



Stephen A. Briggs

Being in good hands is the only place to be.sm
©1998 Allstate Insurance Company, Allstate Indemnity Company, Northbrook, Illinois. Subject to availability and qualifications.

Shirley Cuscaden, formerly Shirley Aplin, fondly remembers a quiet little town where teenagers gathered after school at The Eagle's Nest restaurant, folks met for camaraderie at the Sip and Smack or Dog and Suds, and everyone shopped at the only department store in town, Scoggin's.

Cuscaden, owner and director of Shirley's Dance Studio in the Village Center plaza at Bell Shoals and Glenhaven Roads, graduated from Brandon High School along with her future husband, Arthur Weston "Skip" Cuscaden IV in the 1960's. The childhood sweethearts were married soon after graduation and made their home in Brandon, where they raised four now grown children; Arthur Weston V, Timothy Michael, Karen and Kim. But the Cuscaden family history goes back much further than the Sip and Smack, and includes some interesting characters.

Arthur Weston's lineage identifies the Cuscadens as one of the first 10 pioneer families to settle in Tampa. Cuscaden's great-great-grandfather was one of Tampa's first judges, and the honorable judge's brother, Joe Robles, had the distinction of being the oldest confederate soldier at the age of 109 years. Two parks in Tampa, Cuscaden Park and Robles Park are named in honor of these descendants.

Cuscaden, born in Tampa and raised in Brandon, has watched in awe as restaurants, stores and entire neighborhoods appeared, and continue to appear, in her little hometown. "The amount and the rate of the growth in Brandon has been just amazing to watch," she says.

Shirley's Dance Studio has been a Brandon institution for over 25 years. Cuscaden has moved the studio a few times in that period, settling in the Village Center location ten years ago. "I chose the Bloomingdale location for a number of reasons. We already had many students from Bloomingdale enrolled at our previous

locations (in Brandon and Lithia)," she recalls. "I liked the fact that Bloomingdale was out in the country, removed from the downtown area, yet convenient to everything." Thankfully, some things never change.

Cuscaden has, however, seen some changes in the demographics of Brandon, most notably in the Bloomingdale area. "We live in a very transient community due to the comings and goings of all the military families based in Tampa," she reflects, "and it

"Miss Shirley" Dances Through the Years in Bloomingdale

by Laura Frazier



"Life is a challenge, and I think if we take care of ourselves physically, mentally and spiritually we can face each day positively."

so nice to see many of those families falling in love with the area and making Brandon their permanent home. We have so much to offer; the people, the family oriented community. We love our children and our churches, and there is a lot of caring, helping and giving in our town". She has recently noted an influx of major businesses migrating to Tampa, bringing their families to settle in Brandon and the Bloomingdale area.

Through her professional contact with children and the families, Cuscaden is afforded a peek into how today's family life differs from that of her generation. "This generation of parents seems to place much more importance on devoting time to instilling values in the children. The parents that I have contact with really go about their way to guide their children morally and spiritually, to provide outlets for them to express their creativity and individuality. There is an appreciation for the discipline and stability that ongoing activities such as dance and sports can

provide. Today's parents and children seem so eager to take advantage of those benefits. In our generation it seems that work and chores were much higher on the scale of priorities," she says. "I find these changes to be very positive ones, and see so many instances where today's parents are doing a wonderful job."

"Miss Shirley", as she is known to her hundreds of students, delights in watching her young pupils ex-

perience the different styles of dance taught at her studio, as they develop their talents and discover their individual abilities. Many of her students have gone on to dance professionally. Former student's bodies of work now include such notable jobs as Disney entertainment, the New York Ballet and music video choreography work in California. Several own their own dance studios. But not all students have bigger and better things in mind.

"Many of our children participate just for fun and will reap the body and mind benefits of dance that carry over into other aspects of their lives," she says.

Shirley's Dance Studio boasts an adult enrollment that rivals that of the children's classes. "We have just as many students in our adult classes as we do in our children's," Cuscaden marvels. Adult students range in age from 20-60 and include many former students of the studio eager to return to the ballet, tap and jazz they enjoyed in their childhood. The dance studio offers a 1/2 price tuition as a way of encouraging them to join in the fun.

The benefits of a lifetime of dancing are evident in Cuscaden's grace and posture. Harried moms watching classes through viewing windows in her studio often comment on the teacher's composed demeanor and spiritual radiance. When asked if the physical aspects of dance and dance instruction are difficult to keep up with after so many years, Cuscaden replies, "Life is a challenge, and I think if we take care of ourselves physically, mentally and spiritually we can face each day positively. And, yes," Cuscaden graciously admits, "I do spend a good deal of time warming up, some days more than others!"

New classes are presently forming at Shirley's Dance Studio, located at 4326 Bell Shoals Road. "Miss Shirley" invites Bloomingdale residents to stop by the studio or phone 685-7289 for more information.



Kimberling, dance instructor and daughter of Shirley Cuscaden, practices positions with students in her lyrical class.

CONSTRUCTION COMPLETE!



Smile Wright's New State-of-the-Art Dental Center is NOW OPEN!
The Millennium Center off Paul's Drive.

Smile Wright

Cosmetic & Restorative
Dentistry

Diane Raggard Wright, D.M.D.
1202 Millennium Pkwy., Brandon, FL 33511
(813) 653-1455

\$5 OFF
Any Service*

Brandon's
24-Hour
Plumber

\$5 OFF
Any Service*

Chris's Plumbing Service, Inc.

Chris's Professionals
Specialize in Repairs!
Residential • Commercial • Industrial
Drain Cleaning • Sewer Installation • Leak Detection
Repipes • Lift Stations • Water Heaters • Toilets
Disposals • Remodeling • Faucets



623-6830

671-3993

Brandon's Hotline

License #CFC037168
Bonded • Insured • Licensed

*With this ad • 1 per household

Llamas & Learning Montessori School



PUT A LLAMA IN YOUR CHILD'S LIFE.

- ◆ Music Garden ◆ Tap ◆ Acrobatics ◆ Ballet
- ◆ Gardening ◆ Baby Animals ◆ Llamas ◆ Computers
- ◆ Swimming ◆ Snorkelling ◆ Botany ◆ Zoology
- ◆ Geography ◆ Yoga ◆ Cooking Classes
- ◆ Mini Llama Treks ◆ Spinning & Weaving

Pre-School ◆ Kindergarten ◆ Grades 1-4 ◆ 23 Acre Farm

Offering hours and days to fit your schedule: 3 half days, 5 half days, or extended care. Hours: 7:00am-6:30pm

Certified AMS (American Montessori Society) ◆ London Montessori Society ◆ MEPI
13227 Boyette Rd. ◆ Riverview, FL 33569 ◆ (813) 651-0653
Now Registering for Fall C-HC-380

Providing Quality Child Care to Bloomingdale

Choosing the right child care and daycare services are among the most important decisions you face as a parent. You face challenges with summer vacations, travel, changing job schedules and new fall school schedules. Here are a few tips to help you make the best childcare and daycare decisions for your family:

For Infant and Toddler Care

✓ How are infants and toddlers held and cuddled by the staff? ✓ How does the staff talk to them? ✓ How often are diapers changed-as needed or on a schedule? ✓ How are they fed and held? ✓ What kinds of toys are available? ✓ How many infants does each staff member manage?

For Children of All Ages

✓ How does the staff talk with children-standing as an adult, or lower at the child's eye level? ✓ How does the staff play with children? ✓ How do the children and staff conduct nap or "quiet" time? ✓ How is medicine delivered? ✓ What kind of sick policy does the center have? ✓ How do the children assemble for meals,

snacks, dismissal? ✓ Are children treated as individuals? ✓ How much TV and video programs are a part of the child's day? ✓ Does the staff monitor what they are watching? ✓ How are children greeted upon arrival? ✓ Do the children seem to make friends with one another? ✓ How does this center handle discipline? ✓ What kind of programs does the center have for art, writing, reading and other skills development? ✓ What kind of outdoor playground equipment is available? ✓ Is it "kid safe"? ✓ What about indoor play equipment for rainy days? ✓ Do the children appear to be enjoying themselves? ✓ If your child is quiet and introverted, how would he or she fit in? ✓ If your child is extroverted and a "joiner" or a leader, how would he or she fit in?

About the Staff and Facility

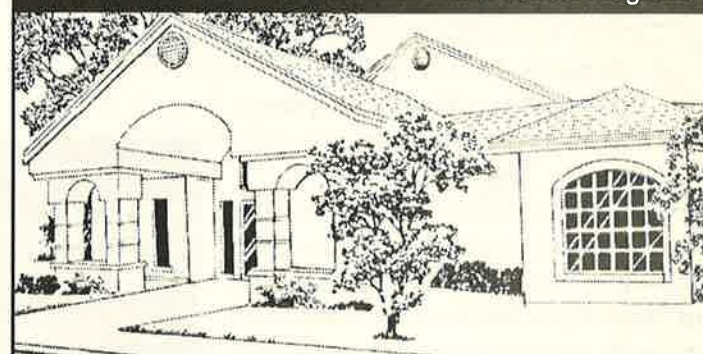
✓ Who owns the center? ✓ Are you satisfied with the licensing that they hold? ✓ From the top manager to each employee, what kind of training and experience do they have? ✓ What about late pick-ups and emergencies? ✓ What makes this center unique? ✓ What kind of payment plans do they require? ✓ What do other parents say about this center?

Sources: Who's Watching the Children; Community News research.



The Children's Nest Day Schools

• Infants • Toddlers • Preschoolers • After School Programs



- Developmentally Approved Curriculum
- Full and Part-time Enrollment • Transportation to and from School • Experienced Teachers
- Pre-School Summer Enrichment Programs
- Hot Nutritious Meals • Open Door Policy
- School Age Summer Camp

685-0833

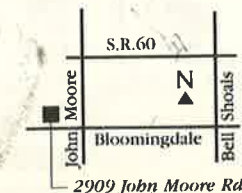
3221 S. Bryan Rd. (Near Bloomingdale Ave.)
Other Hillsborough County Locations: Hyde Park, Northdale, Plant City, Temple Terrace, and Town & Country

NOW ENROLLING

TEMPLE

CHRISTIAN ACADEMY SCHOOL
Specializing in Infants to 6th Grade

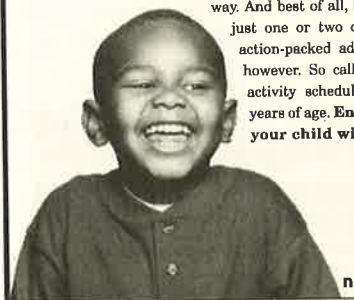
6:30am-6:00pm
After School Pick-up
A Beka Curriculum
Computers
Music
Small Class Size
Individual Attention
Summer Camp
689-7190



Give Your Child A Better Head Start.

**Give your kids a break.
Give their minds
a workout.**

At KinderCare's Summer Adventures Program, every day is a whole new day of fun, friends and exploring the world around us. Nature, Sports, Water, Music and Arts & Crafts-Summer Adventures Camps are exciting and entertaining every step of the way. And best of all, Summer Adventures are flexible. Come for just one or two camps-or come for all five action-packed adventures. Space is limited, however. So call now for a complete camp activity schedule. For Kindergarten to 12 years of age. Enroll before June 15th and your child will receive a special gift.



nature · crafts · sports · water

KinderCare Learning Centers
4304 Bell Shoals Road
654-0572

BRANDON SWIM & TENNIS Club

Much More Than Our Name

Nothing for the kids to do?

- Swimming Gymnastics Tennis
- Diving Soccer Petting Zoo Games
- Jogging Track Rhythmic Gymnastics
- Swim, Dive, Tennis Lessons Picnic Area
- After School & Summer Sport Camp

Important Dates

- April 5 Swim Lesson Session 2 begins
- April 5 Summer Swim Team Registration begins
- April 5 Beginner/Intermediate Dive Lessons begins
- April 19-May 2 Gymnastic Session 2 registration
- June 1 Summer Sport Camp begins
- June 12 Competitive Soccer Tryouts for U10, U12, U16

405 Beverly Blvd. **Brandon, FL 33511**
689-0908 Fax 681-3028 (Lic # CHC 347)



In April
We
Will...

Quality Learning Environments

- ✓ Have an egg hunt ✓ Plant Flowers ✓ Tumble on the Tumble Bus ✓ See a play at Center Place ✓ Have an Easter Parade ✓ Focus on the color purple ✓ Taste egg salad ✓ Chase butterflies ✓ Learn the nursery rhyme "Little Bo Peep" ✓ Embrace Spring!

- Highreach Learning Curriculum
- Spacious Shaded Playground
- Sibling Discounts
- Infants Through After-School Age
- Family Owned and Operated
- Tumble Bus
- Full & Half Days
- Karate Instruction
- Computer Fun
- Field Trips
- Parents Welcome Anytime
- Licensed, Trained & Stable Staff
- Music Program



Hours: 7:00am-6:00pm
Owners: Christine Terrell & Robert Terrell
Director: Gail Smallwood
LIC#C-HC-193



Valrico Chapter of MOMS Club to meet in Bloomingdale

by Laura Frazier

The Brandon MOMS (Moms Offering Moms Support) Club announced in March its plans to sister a new Valrico chapter to include members residing in Bloomingdale. The new chapter's membership area will also include all other areas of Valrico and the communities of Seffner, Mango, Thonotosassa and Lithia. The club is an international non-profit organization with more than 35,000 members in over 700 chapters across the United States, Canada and Slovenia.

Karen Rodriguez, President and Founder of the Valrico chapter, would like to invite Bloomingdale stay at home mothers with toddlers and preschool age children to discover all the club has to offer. "There are just so many positives," says Rodriguez. "Our objective is primarily for the kids to get together on a weekly basis for park days, crafts activities, and field trips to interesting, kid-friendly places like Lowry Park Zoo and the Manatee Viewing Center". Officers of the MOMS Club also organize a monthly birthday celebration for the children and special events such as the annual Easter egg hunt and a summer picnic.

"Our club is unique in that it revolves around the children," says Rodriguez, "but we do offer support, education and fun for moms too". A recent meeting began with announcements which included a call for volunteers to help out a club member



MOMS Club President & Founder Karen Rodriguez and daughter Nicole

"Our club is unique in that it revolves around the children," says Rodriguez, "but we do offer support, education and fun for moms too".

who had just broken her foot. Hands went up and names were taken as members volunteered to provide school transportation for the injured mom's children and to do grocery shopping and errands for the friend in need. Another supportive function of the club, The MOMS "Cuisine Team" plans, prepares and delivers family meals to members with newborns at home.

Monthly meetings incorporate speakers to address issues of importance to women and families. Speakers scheduled for the month of March included a child car seat safety inspector and a member of the Child Identification Service to discuss keeping children safe and to provide fingerprint I.D. cards for the children.

Members are invited to take a well earned break from their daily routines at the group's MOMS' Night Out. The monthly event, a "girls only" dinner, is held at a variety of area restaurants. "We have such a great time at MOMS night out," says Karen. "The conversation includes topics that only mothers of young children would discuss at dinner, from potty training and bedtime battles to old dating horror stories."

(Continued on page 15)

(Cont. from Page 14)

Each chapter of MOMS Club selects a community service project to sponsor. The Brandon chapter, founded in 1998, has participated in toy and food drives for several local organizations including ECHO and The Brandon Crisis Pregnancy Center.



MOMS Club Officers (l-r back) Carla Ferreira and son Bryce, Lynea D'Angelo and son Mark, Michele Roberts, Holly Flynn, Julie Pollock and son T.J., (sitting l-r) Ann Marie DeFazio and daughter Emily, Renee Spartichino and daughter Deanna, Karen Rodriguez and daughter Nicole

Rodriguez became intrigued with the idea of meeting weekly with a group of mothers and their young children upon her return to the U.S. after residing in Venezuela for several years. Back in the states with her then 8-month old daughter Nicole to care for and entertain, Rodriguez found that the friends and family she had left behind were working full time. Many of the new friends she met also were not available during the day, the time when stay at home moms and their children most need the companionship and support of others. "I just had too much unstructured time on my hands and also wanted to provide Nicole with some friends she would see on a regular basis," says Rodriguez. "The MOMS Club has given me the opportunity to participate regularly in fun, educational activities with my child, find the support that I needed, and has kindled many new friendships. I find that just being around so many other moms at various stages of mothering has afforded me insights into parenting that have allowed me to become a much calmer, more confident mom. And," Rodriguez confides with a smile, "it keeps me out of the mall!"

Weekly meetings are now being held the first Tuesday of each month at 10:00 am at the Bloomingdale West Recreation Center. For more information, please contact Karen Rodriguez at 651-3261.

How to get the Gazette

We are in the process of updating our distribution mailing list. If you are a Bloomingdale resident and did *not* receive your copy of *The Bloomingdale Gazette* through the U.S. Mail, we would like to include your address on our mailing list.

The Gazette's goal is to deliver to each house a copy of your Gazette to you once a month.

You can get on the mailing list by contacting us in one of four ways:

- (1) You can call the Gazette at 681-2051 and leave your name and address. Do *not* call the Gazette's alternate number.
- (2) You can drop us a note at The Gazette, 3509 Bell Shoals Road, Valrico 33594.
- (3) You can fax your name and address to (813) 651-1129, or
- (4) You can contact us via e-mail: BHA-INC@altavista.net.

And lastly, we welcome your comments and letters. Please write, fax or e-mail us at any of the addresses or numbers listed above.

Eagle Pointe

MacRiley Homes' Tucker Division has begun construction on a new private, electronically gated community, "Eagle Pointe", located just west of



Lithia Pinecrest on Erindale Drive in Bloomingdale East. MacRiley Salesman Tom Thurman says the builder hopes to have an on-site model ready early this year, with home construction beginning in May 1999.

The heavily wooded community will feature 38 up-scale, traditional style homes. The single street access to Eagle Pointe will be lined with elegant antique streetlights and mailboxes. Homes will range in size from 2200-5000 square feet, with prices beginning in the low \$200's. For further information, contact Tom Thurman at 661-9896.

Bloomington West Recreation Center Spring Activities Schedule

Classes are forming now; please call Donna Clouse at the Rec Center (6:30pm -9:00pm Monday through Friday) at 744-5907 for more information or to register.

SAND VOLLEYBALL (ages 14 and up) starts Wednesday, April 7. Games will be played every Wednesday from 6:00-7:00 pm.

VOLUNTEERS are needed to work with the "coach pitched" co-ed softball team (ages 9 to 12). Games are every Thursday from 6:00 to 7:30.

Class	Age	Day	Time	Fee
Ceramics	6-12	F	4:00-5:00	Supplies
Daisy Fun-Shoot	9-12	Th	3:30-4:30	\$10
Home School PE	6 & Up	Th	1:00-2:00	Free
Karate	5 & Up	T/F	4:45-5:45	\$3/class
PeeWee Tennis	3	T	1:00-1:30	\$8
Pee Wee Tennis	4-5	T	1:30-2:00	\$8
Tennis	5-8	W	3:45-4:45	\$3/class
Tennis	9-12	W	4:45-5:45	\$3/class
Tennis	5-8	F	3:45-4:45	\$3/class
Tennis	9-12	F	4:45-5:45	\$3/class
Ballet/Tap/Acro	3-5	M	3:30-4:30	\$3/class
Ballet/Tap/Acro	6-12	M	4:30-5:30	\$3/class
T-Ball	4-12	M/T/Th	6:00-7:00	\$20
Wrestling	5-12	Th	4:00-5:00	\$3/class
1-2-3 Tennis	Adults	W	6:30-8:00	\$3/class

Trivia contest winners

Congratulations to Marcia Banks, winner of the Gazette's February trivia contest. Marcia, a Bloomington West resident, answered all 20 questions correctly and will receive a trophy in recognition of her winning 100% score.

The answers to the February trivia contest are as follows: 1) Huey, 2) Duey, 3) Louis, 4) Uncle Scrooge, 5) Grandma Duck or Gladstone Gander, 6) Knothead, 7) Splinter, 8) Metropolis, 9) Daily Planet, 10) Perry

White, 11) Pearl, 12) Oil Can Harry, 13) Magpies, 14) Batman, 15) Little Beaver, 16) Petunia, 17) Cat and Mouse, 18) Sylvester, 19) Bumstead and 20) Archie Andrews.

The Gazette also extends congratulations to Bloomington resident Sarah McKinley, winner of the January trivia contest. Thanks and "better luck next time" to all the other readers who participated in the contests.

Yard of the Month by Paul Almeida

Sponsored by
Bridges Equipment
Company, Inc.

With spring in the air, more and more of our residents are starting to add color to their landscaping. This is a tremendous asset to our community, and makes the job of selecting a property that "stands out" increasingly challenging. We did however narrow the contenders down to the home of Glenn and Carol Scheafnocker, our April 1999 Yard of the Month winners.

Glenn and Carol, who live at 2215 Hickory Ridge Drive, seem to have a leg up on the season. Their rounds are colorful and neat. The long driveway is trimmed with beautiful dwarf azaleas interspersed with Bird of Paradise. Their front lawn is green, properly trimmed and well manicured.

Both Glenn and Carol take the responsibility, and credit, for their yard. We thank them and congratulate them for earning the distinction of the Bloomington Yard of the Month.

Editor's note: Bloomington residents with suggestions or nominations for the Yard of the Month feature are invited to contact Paul Almeida at 661-2018.



Bridges Equipment Company, Inc.

...is now your authorized factory **SNAPPER** dealer! Stop by any of our 3 locations for the expert sales and service you need to keep mowing.

Brandon

1606 S.R. 60 East
Brandon, FL 33594
(813) 681-8211

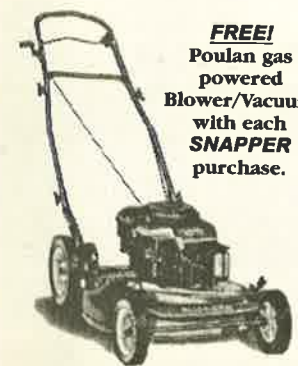
North Tampa

1209 E. Bearss Ave.
Tampa, FL 33549
(813) 977-2500

Clearwater

2323 S.R. 580
Clearwater, FL 33763
(727) 796-4141

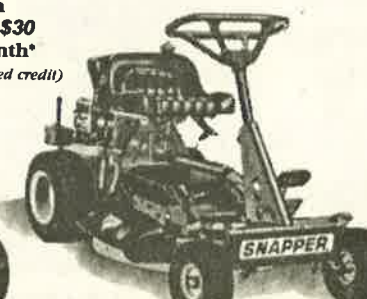
Snapper's M-Series makes it easy to afford a great mower. How easy? Get a push mower for \$299.99, a self-propelled model for only \$399.99, or America's best selling rear-engine rider for as little as \$999.99. All built with the quality and durability you expect from a Snapper. So stop by today. And ask about Snap-Credit.™



MR215014B



MRP216014B



M280917B

FREE!
Poulan gas powered
Blower/Vacuum
with each
SNAPPER
purchase.

Payments
from
\$15 to \$30
per month*
*(with approved credit)

SNAPPER
Born to mow.



Personal Injury & Wrongful Death

The insurance company has a lawyer, so should you.

Accidents • Defective Products • Malpractice
No Charge for Initial Consultation on Injury Cases

LaViva Professional Center • 750 W. Lumsden, Brandon
653-2500

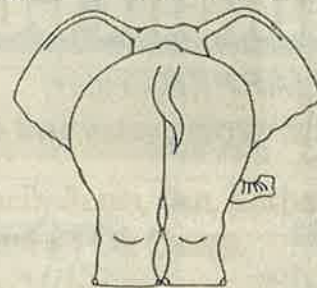


Curry & Associates, P.A.

A Full Service Law Firm

The hiring of a lawyer is an important decision that should not be based solely upon advertisements. Before you decide, ask us to send you free written information about our qualifications and experience.

How Do You Look From Behind?



ALL-WAYS FIT

Personal Training
Body Sculpting



Fitness Evaluation
Endurance Training

Custom Fitness Programs

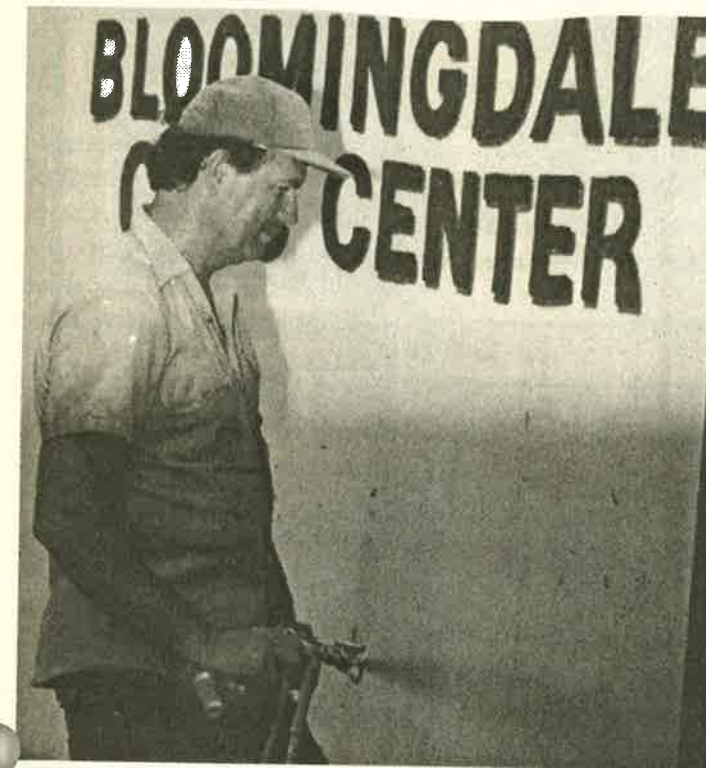
In your home and at your convenience!!!

Call Angela Cohen today for a free consultation

(813) 219-3642

Little League/YMCA Celebrate a New Partnership

Fun, food and games were enjoyed by everyone, especially the kids, at the "Partners in Play" Celebration held at the Bloomingdale Little League Park. (Photos by Mack Austin)



The celebration began with intensive repair of the Little League Park. Workers from the Hillsborough County Parks Maintenance Division like Bill Brandon, shown here painting the Bloomingdale Community Center, repainted the parks buildings and completed several plumbing and construction projects.

Students from Bloomingdale High School insured the success of the celebration by setting up a variety of booths to entertain the children. Their hard work and willingness to participate in this historical event clearly demonstrated the dedication needed to form close partnerships in community projects.



Rachel Mikaelsen and Jennifer Hoffman of the Bloomingdale High School Student Government Association (SGA), helped provide fun and games at the celebration. Under the direction of Advisor Bonnie Herzog, the SGA coordinated the setup of the booths and recreation areas used by the clubs to provide entertainment for the kids.

Students' Bus-Stop Behavior

by Laura Frazier

Hundreds of students congregate each weekday morning at Bloomingdale bus stops, waiting for their ride to school. At the start of each school year, these students and their parents are required to sign bus rider agreement forms outlining student conduct expectations. Students have a responsibility to conduct themselves appropriately while waiting for the bus, refraining from any obtrusive, dangerous or destructive actions.

Some residents have expressed concerns about noise, littering, vandalism and fighting at certain stops in our community. These problems are generally known to occur at unsupervised stops, which from observation would include many or most of the stops on the middle and high school routes. The elementary school routes tend to have more parental supervision and therefore fewer problems.

School system officials say that complaints registered about students' bus stop behavior are few and far between. In fact, Bill Maxwell, Hillsborough County Schools' General Director for our area, says that only two incidences of bus stop behavior concerns have been reported this school year in Brandon, neither offense occurring in Bloomingdale. "Perhaps our biggest problem," says Maxwell, "is that people often become frustrated with bus stop difficulties without going through the proper channels". Maxwell indicates that if there is a problem at a bus stop in our neighborhood, the first step is to call the school directly. "The schools want to know about any offenses occurring on the bus and at the bus stop and will take corrective action. Most of the time the problem can be resolved at the school level. During my past assignment as Principal of Tomlin Middle School, I spoke personally with kids involved in bus incidents. I met with parents of the offending students and we even held a 'town meeting' type assembly to discuss our expectations. These are examples of actions that citizens



"The schools want to know about any offenses occurring on the bus and at the bus stop and will take corrective action..."

should expect a principal to take," says Maxwell. Maxwell adds that if any individual feels that there is no improvement in the situation after contacting the school, they should feel free to call upon him personally to follow up.

Burns Junior High School Assistant Principal Michael Engle concurs with the Area Director's account of few reported bus stop problems this school year. "Perhaps the biggest problem we have with bus and bus stop conduct is getting people to report any occurrence directly to the school so that we can

follow through with investigation and enforce consequences if necessary," says Engle.

"Riding the school bus is a privilege. Each student on every bus shall be held responsible for his or her conduct, and we will not hesitate to suspend or revoke bus riding privileges if a situation cannot be rectified satisfactorily".

Engle suggests that any complaints or concerns about bus stops be referred to the school's Principal and/or to the District Bus Transportation

office, located on the Burns campus. "Sandy Capvella at the Transportation Office is available to help determine the destination school of any bus if unknown, and can work with the school's principal to identify and solve any problems that may be occurring at our stops".

DPMI, Bloomingdale's property management company, has noted an increase in vandalism offenses at several bus stops, including those at the entrance to the River Crossing subdivision and at the River Oaks,

Treeline, Kiowa and Fieldstone stops. DPMI would like to bring this matter to the attention of parents with children getting on the busses at those locations.

Bloomingdale residents aware of bus stop behavior that is obtrusive (i.e. noise, harassment, trespassing), dangerous (i.e. darting into streets, climbing on walls, fighting) or destructive (i.e. trampling plants, damage to sprinkler system, graffiti, etc.) are encouraged to contact either the offending school's Principal, Sandy Capvella of the county's Transportation Office at 744-8632 or Area Director Bill Maxwell at 744-8630.



**Your Home Deserves the Best!
Ask Sherwin-Williams**

BLOOMINGDALE HOMEOWNERS
Bring this ad into our store for special DIY Discounts on our quality products!



726 W. Brandon Blvd. • 689-6151

**Looking for a First-Rate Paint Job?
Trust only the Best!**

COMMERCIAL RESIDENTIAL FREE ESTIMATES

INTERIOR • EXTERIOR PAINTING PRESSURE CLEANING

DON'S PAINTING
RE-PAINT SPECIALIST
QUALITY WORKMANSHIP

P.A. 2653

DONALD MURRAY
813 684-4213

(813) 654-5646
Lic. # 3694

Bloomingdale Painting
Pressure Washing
Commercial • Residential

TOD HOWARD
Owner

4616 OAK RIVER CIRCLE
VALIRICO, FLORIDA 33594

Rodney A. Crowley, Inc.
Painting Contractor

Licensed Bonded Insured
Master Painter

Quality Assured
(813) 948-1538
Cert. #3625

PA2658

Kevin Gilleland
(813) 651-0608
Cell: 293-4524

United Painting Services

Commercial • Residential • Exterior • Interior

Office: (813) 908-9UPS • Fax: (813) 908-3444
"We Shine Your Diamond in the Rough"

Albert Vega
(813) 264-1120
Cell: 765-9939

Painting Professionals of Florida

Licensed • Bonded • Insured
Residential • Commercial
32 Years Experience in Brandon Area
651-0285
PA4576

Painting by

Mark Kelly
Painting Contractor
Specializing in
Commercial Repaints Residential

Cert. PA 2451

Home Ph (813) 684-2157
Mobil Ph (813) 293-9446

Licensed Bonded Insured

Free Estimates

Rhema Painting
Interior and Exterior
Pressure Washing

TONY NEWBERRY
Phone (813) 681-6724
Pager 980-8787

Insured
License #4580

GALAXY PAINTING SERVICE

Residential Specialists • Free Estimates • Interior-Exterior Painting • Residential Repairs • Pressure Washing

JOHN PEREZ, OWNER
685-1576

Since 1981 PA3660

License # Hillsborough - 4506 Pasco - 08456

Tom Hayden
Painting and Pressure Washing
"Let Us Color Your World"

LICENSED • BONDED • INSURED

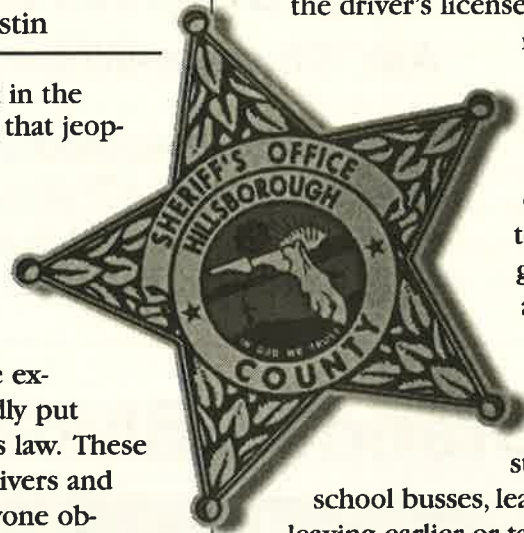
Phone: (813) 654-1313 Fax: (813) 653-2491

Bloomingtondale Community Substation Notes

by Deputy Pete Maurer and Mack Austin

With less than two months left in the school year, a serious problem that jeopardizes the safety of our school children continues to occur with alarming regularity. The problem involves the illegal passing of school busses that are stopped to pick up or drop off students. Several parents in Bloomingtondale and surrounding areas are extremely upset with drivers that repeatedly put their children in danger by breaking this law. These parents are monitoring the offending drivers and now have a means of taking action. Anyone observing a motorist illegally passing a school bus can report them by calling 1-800-STOP-4KIDS.

Florida Statute 316.172, "Traffic to stop for school bus" states "Any person using, operating or driving a vehicle on or over the roads or highways of this state shall, upon approaching any school bus which displays a stop signal, bring such vehicle to a full stop while the bus is stopped, and the vehicle shall not pass the school bus until the signal has been withdrawn. A person who violates this section commits a moving violation, punishable as provided in chapter 318." Chapter 318, paragraph 5a states "One hundred dollars



for a violation of (the above statute). In addition to this penalty, for a second or subsequent offense within a period of five years, the department shall suspend the driver's license...for not less than 90 days and not more than 6 months".

The law is clear and precise. It is written to protect our most valuable assets...our children. We all have schedules to keep. We all get in a hurry to get somewhere. But there is no appointment, no job or meeting worth endangering innocent lives.

If you find yourself constantly slowed down in traffic by school busses, learn the bus schedules and try leaving earlier or taking a different route. The kids just want to get to and from school safely. They should not have to worry about bad drivers.

Editor's note: The Hillsborough County Sheriff's Office Bloomingtondale Community Station works closely with the Bloomingtondale Area Community Council to identify and address issues of importance to our residents such as traffic problems, environmental protection, home security and crime prevention. Residents are encouraged to contact Deputy Maurer of the Bloomingtondale Community Substation at 635-8040 to express any concerns they may have questions about or would like to see addressed in the "Bloomingtondale Community Substation Notes" column.

Bloomingtondale Square Restricted Parking Areas

by Mack Austin

The parking areas and lanes at Bloomingtondale Square Shopping Center have recently been resurfaced and the "No Parking-Fire Lane" and "Disabled Parking Only" spaces re-marked. The Hillsborough County Sheriff's Office Parking Enforcement Specialist Team (P.E.S.T.) is now actively patrolling the restricted parking areas.

The fine for illegally parking in the fire lanes is \$33. These lanes permit open access for Fire Department vehicles.

Emergency Medical Technicians assigned to the Fire Department respond to medical emergencies such as heart attacks. One such incident recently occurred at a local Brandon business when a customer had a heart

"We would want the path clear for the professionals to do their job...if we were the victim!"

attack and the EMTs responding found the entrance to the front door was blocked by someone "just running in for a minute".

The fine for illegally parking in the areas designated for disabled persons and the striped access aisle next to the areas is \$250. Fraudulent use of a disabled parking permit yields a fine of \$500. Blocking the curb access ramp carries a fine of \$250.

These areas have been set aside for special purposes that need to be recognized and respected. No one can predict when an emergency will occur. We would all want the path clear for the professionals to do their job and render aid if we were the victims.



MAJIK TOUCH CLEANERS

"EXPERIENCE THE DIFFERENCE"

Apollo Beach 220 Apollo Beach Blvd. 645-1499	Bloomingtondale Royal Oaks Shopping Ctr. Lithia Pinecrest Rd. 654-8113	Bloomingtondale 3509 Bell Shoals Rd. Just S. of Bloomingtondale 654-9292	Brandon Oak Park Plaza 717 W. Lumsden 654-9541	Brandon 913 W. Brandon Blvd. Builders Square Plaza 684-4499
Brandon Lake Brandon Village 11393 Causeway Blvd. 643-6944	Seffner North Grove Plaza 1515 S. Parsons 684-5897	Valrico Valrico Square 1985 E. Brandon Blvd. 654-2324	North Brandon Kingsway Plaza 1213 Kingsway Ave. 653-4535	

\$1.10
EACH

SHIRTS LAUNDERED

With \$5.00 Minimum Dry Cleaning Order, No exceptions, Limit 10. Bouses, Polo & Boxed Shirts extra

COUPON EXPIRES 5/10/99

\$5.00
OFF

ANY DRY CLEANING ORDER OVER \$25.00

Valid on Incoming Orders Only - No exceptions, Valid only with coupon. Not valid with other coupons or on sale items.

COUPON EXPIRES 5/10/99

20%
OFF

WEDDING GOWN DRAPERY CLEANING, BEDSPREADS COMFORTERS, BLANKETS

Valid on Incoming Orders Only - No exceptions, Valid only with coupon. Not valid with other coupons or on sale items.

COUPON EXPIRES 5/10/99

\$3.00
OFF

ANY DRY CLEANING ORDER OVER \$15

Valid on Incoming Orders Only - No exceptions, Valid only with coupon. Not valid with other coupons or on sale items.

COUPON EXPIRES 5/10/99

1987 *Serving Our Community For 12 Years* 1999



MAIL BOXES ETC.

Brandon's Premiere Packing & Shipping Center

- SHIPPING • PACKAGING
- OVERNIGHT • MAIL SERVICES
- FAX • STAMPS
- COPIES • PACKING SUPPLIES

Big Or Small We Ship It All!

2 LOCATIONS IN BRANDON:

813 E. Bloomingtondale Ave.
813-689-4998 • Fax 813-689-4328
M-F 8-7, Sat. 9-5, Sun. 12-4

235 W. Brandon Blvd.
813-681-3136 • Fax 813-684-0077
M-F 9-6, Sat. 9-1



Sue & Jim Harbridge
Owners

Notary Service



BLOOMINGDALE'S OWN TOP STAR!

Luana
RUSSELL

Five-Star Service

COLDWELL BANKER RESIDENTIAL REAL ESTATE, INC.
889 E. BLOOMINGDALE AVENUE
BRANDON, FLORIDA 33511



LUANA'S FIVE-STAR SERVICE

- ☆ IMPECCABLE, INCREDIBLE SERVICE
- ☆ PROFESSIONAL DEMEANOR WITH WARMTH AND FRIENDLINESS
- ☆ SERIOUS PREPARATION FOLLOWED BY A FUN PRESENTATION
- ☆ BEST POSSIBLE VALUE FOR YOUR HOME
- ☆ TOTALLY INTEGRATED BUYING OR SELLING EXPERIENCE



3601 PINE KNOT DRIVE
PINE GROVE CONDO

\$89,900

TWO BEDROOMS, TWO BATHS,
LOFT, 1566 SQ. FT., POND VIEW,
TWO-CAR GARAGE



BLOOMINGDALE EAST

\$149,000

FIVE BEDROOMS, 3 BATHS,
2,381 SQ. FT., COVERED LANAI



3636 COLD CREEK DRIVE
WINDSOR WOODS OF
BLOOMINGDALE

\$159,900

FOUR BEDROOMS, 2.5 BATHS+,
LOFT, HEATED SCREENED POOL

REACH FOR THE FIVE-STAR ADVANTAGE! CALL LUANA!

662-1610 OR 685-8545

ECRWSS
POSTAL CUSTOMER

Bulk Rate
U.S. Postage
PAID
Tampa, FL
Permit #2397