



LAURA FRAZIER/Photo

Sandra Frost, principal of Richard P. Cimino Elementary School, opening in Bloomingdale next week.

Cimino Cougars Are In The House

School Starts Wednesday Aug. 7

By LAURA FRAZIER

Principal Sandra Frost could barely contain her enthusiasm less than two weeks before the first school bell was scheduled to ring in the inaugural year of Bloomingdale's new Richard P. Cimino Elementary School. In true hands-on fashion, Frost and her team of administrators on Thursday helped delivery workers unload a 54-foot semi filled with classroom accessories.

Even with starting time down to the wire, and temperatures soaring into the upper 90's, Frost kept her cool.

Taking a quick break from the manual labor at hand, she said, "This [opening a new school] has been one of the most wonderful, exciting experiences of my life."

From the planning stages and construction to the new school's structural features and landscaping, she said, "Everything has exceeded my expectations."

Even the book carts and kindergarten blocks the team unloaded were cause for excitement.

"It seems so long ago that I ordered everything. As things are coming off the truck I'll say, 'Oh, I forgot we ordered that! That's great!'"

See Cimino, Page 12



In This Issue:

- School Preview Nights, 2
- Inside Connections, 4
- Community Council, 6
- Commissioner's Corner, 13
- Letters, 17
- Substation Notes, 19
- Property Manager's Report, 22
- Yard of the Month Form, 22

Featured Story:

**Tanker Flips,
Public Meeting
Planned**

see page 2

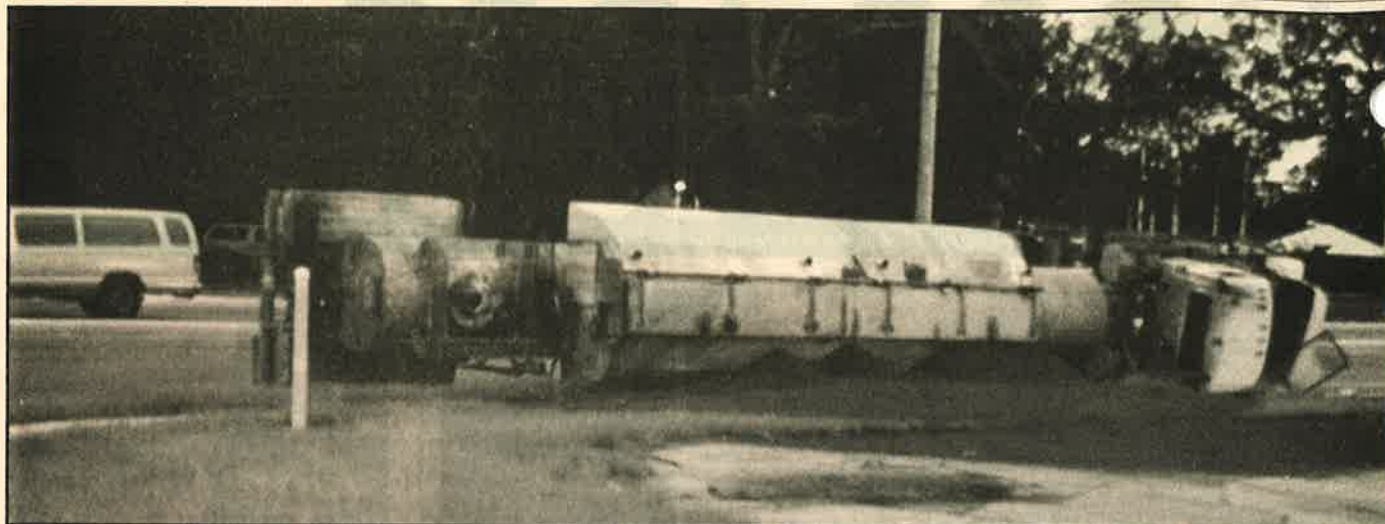
Bloomingtondale's National Little League Champs, see page 5



**Hungry Howie's
Pizza & Subs**

**PIZZA • PASTA • SUBS
WINGS • SALADS**

SEE OUR SPECIALS ON PAGE 7



The truck's storage tanks reportedly split, spilling an estimated 4 cubic yards of raw phosphate onto a vacant lot.

Photo courtesy Perry Dawson

Commission Delays Lithia Truck Route Review

Community Meeting Set For Aug. 27 at Lithia Springs Elementary

By LAURA FRAZIER

An overturned tanker truck at the corner of Lithia

Pinecrest Rd. and Bloomingdale Ave. the evening of July 22 turned quite a few heads at the busy intersection. Sheriff's and Fire Dept. officials said the CCC Industries tractor-trailer was traveling north on Lithia Pinecrest Road and over-

turned when the driver attempted to turn left onto Bloomingdale Ave.

Officials said the truck rolled onto its right side, slid over 140 feet and dumped nearly half of its load (a reported 4 cubic yards of raw phosphate fertilizer) onto a vacant lot at the intersection.

The driver, who sustained minor injuries, was charged with careless driving.

The July 22 incident was the third accident on Lithia Pinecrest Rd. over a period of five weeks involving a phos-

phate industry truck.

A week prior to the accident, commissioners rescheduled their planned July 24 review of the road to their Oct. 2 meeting. The county will hold a community meeting this month to discuss the issue with the public. The meeting will be held Tuesday, August 27, 6:30 p.m. at Lithia Springs Elementary School.

Over 1,600 Bloomingdale and Lithia area residents have petitioned commission-

See Truck, Page 18

School Preview Nights

Alafia Elementary School

Monday, Aug. 5 from 5:30 to 7:30 p.m., all students. Information: 744-8190.

Cimino Elementary School

Monday, Aug. 5, 6:00 to 7:00 p.m. for students with last names beginning A - L, 7:00 to 8:00 for M - Z. Information: 740-4450.

Burns Middle School

Thursday, Aug. 1, 5:30 p.m. for eighth grade students, 7:30 p.m. for seventh grade students, and Monday, Aug. 5, 6:30 p.m. for sixth grade students. Information: 744-8383.

Bloomington Senior High School

Monday, August 5, 7:00 p.m. for incoming freshmen and new students. Information: 744-8018.

SAY YOU SAW IT IN THE
THE BLOOMINGDALE GAZETTE

259206

Do Your Homework Now and Save \$10

Register for After School Sports Camp

BRANDON SWIM & TENNIS Club
Much More Than Our Name

405 Beverly Blvd.
689-0908

- Tennis
- Diving
- Swimming
- Pre-school
- Gymnastics
- Masters Swim
- Swimming lessons
- Academic Tutoring
- Rhythmic Gymnastics
- Lessons, teams, camps
- After School Sports Camp

Lic# CHC110347 www.mybstc.com

FAITH BAPTIST CHRISTIAN SCHOOL

K-5 - 12th Grade



Lady Eagles Varsity Volleyball Team



Teacher/Student Ratios are small, thus giving our students close, personal attention from their teachers

Accredited by The Florida Council of Private Schools

- State-of-the-Art Computer Lab
- Music & Chorus Program

- Spanish Program
- Beautiful Playground Facilities
- Full Athletic Program
- A BEKA Curriculum
- Physical Education Program

- Spacious, Colorful Classrooms
- Certified Experienced Teachers
- Year-Round Child Care (6:30a.m. - 6:00p.m.)
- Multi-Child Discounts

WE ACCEPT THE FLORIDA PRIDE SCHOLARSHIPS

FAITH BAPTIST CHRISTIAN SCHOOL

1118 N. Parsons Avenue
(2 Blocks South of Windhorst Rd.)
Brandon, Florida 33510
654-4936

E-mail: faith@ij.net



"...They shall mount up with wings as eagles..."
Isaiah 40:31

Our K-5 Class is a new and exciting beginning to a lifetime of learning. Our students are taught Writing, Reading, & Mathematics as well as social skills.

Your Inside Connections

The Bloomingdale Homeowners Association, Inc.
 3509 Bell Shoals Road, Valrico, FL 33594.
 (813) 681-2051. Fax: (813) 651-1129
 E-mail: BHA@CyberRails.com
 Web Site: www.BloomingdaleGazette.com
 BHA meetings are at the community office on the 1st Monday of each month at 7 p.m.

- President** — Ted Grable
- Vice President** — Joe Hickie
- Treasurer** — Pam Liguori
- Director** — Len Jaszczak
- Director** — Patricia Radel
- Director** — Tony Diolosa
- Director** — Steve Heckel
- Director** — Cheryl Kehmeyer
- Director** — Michele Caballer
- Director** — Joseph Grem

Bloomingdale Special Taxing District
 3509 Bell Shoals Rd., Valrico, FL 33594
 (813) 684-6667
 BSTD meetings are held at the community office on the 2nd Monday of each month at 7 p.m.

President — Thom Snelling

- Treasurer** — Don Cassels
- Recording Secretary** — Alice Burleson
- Trustee** — Russell Jones
- Trustee** — David West
- Trustee** — Dale Kahn
- Trustee** — Myron Magedanz
- Property Manager** — Al Devney

Bloomingdale Mobile Watch Coordinator/Equipment Manager —

- Tony Diolosa, 681-1146
- Treasurer** — Paul Kelmer, 681-9701
- Patrol Member** — Steven Heckel, 654-4266



- Patrol Member** — Brad Scharp, 643-5000
- Patrol Member** — Paul Warr, 685-7883

Bloomingdale Oaks Special Taxing District
 P.O. Box 3132, Brandon, FL 33509-3132. (813) 685-2817

BOSTD meetings are held at 3419 Cade Lane on the 2nd Monday of each month at 7:30 p.m.

- President** — Bill Grace
- Treasurer** — Fred Englehart

THE BLOOMINGDALE GAZETTE

The official publication of the BHA since 1980
 3509 Bell Shoals Rd.
 Valrico, FL 33594
 (813) 681-2051
 Fax: (813) 651-1129
 E-Mail: News@BloomingdaleGazette.com

- Executive Director** — Joe Liguori
- Editor** — Laura Frazier
- Photojournalist** — Mack Austin
- Restaurant Critic** — Elton Dumont
- Yard of the Month** — Rosie Trellis

Published by Sunbelt Newspapers — 1401 Oakfield Drive, Brandon, FL 33511. (813) 689-7764

The Gazette is delivered free to Bloomingdale residents along with The Tampa Tribune on the 1st Saturday of each month.

- Publisher** — Carla Rockwell
- Advertising Manager** — Melonie Hall

Cardinals Fly High Over Bloomingdale

Bloomingdale's National Little League Champions Complete Extraordinary Season

By JOHN HAYES
 Cardinal's Team Dad

For the record, the Cardinals of the Bloomingdale National Little League (Major Division) have completed one heck of a season. During regular season play, the team won 16 and lost 2. They entered the league championships as the team to beat, and managed to win all three games, including one that featured a dramatic come from behind victory.

By virtue of winning the League Championship, the Cardinals advanced to the President's Cup via the District 13 Southern Playoffs. On the first Saturday of the playoffs, the Cardinals lost their first game against East Bay and were sent to the losers bracket. To have any chance of winning the right to advance to the President's Cup final game, they would have to win 7 games in 7 days. Undaunted, the Cardinals beat Pinecrest on Sunday, South Brandon on Monday, Southeast on Tuesday, North Brandon on Wednesday and Progress Village on Thursday.



Photo courtesy of The Cardinals
 Cardinals team members were Kyle Copack, Danny Davis, Paul Davis, Josh Edgerton, Chris Fenisey, Luke Harper, Sean Hayes, Jared Howell, Chris Insley, Tyler Parker, Thomas Shay and Andy Suslavich. Team Manager was Mike Davis and coaches were Tom Copack and Tim Fenisey.

By winning five in a row, the Cardinals got the chance to meet the remaining team from the winner's bracket, East Bay. Despite losing to East Bay in the opening game, the Cardinals beat East Bay on Friday 5 to 0.

This set up the District 13 Southern Championship game the following day.

Although the Cardinals were beaten Saturday by East Bay, their 25 and 4 record is one they are very proud of.

FHA • VA • CONVENTIONAL • NEW CONSTRUCTION • LOT LOANS

30 YEAR FIXED
6.125%
 6.48% APR

15 YEAR FIXED
5.25%
 5.52% APR

SMART LOAN
2.75%
 6.21% APR

No Credit Score • No Income Verification
 No Asset Verification • 20% Down Payment Required

LOT LOAN
5.0%
 3/1 ARM

30 Year Term • No Balloon • 6.211 APR

MORTGAGE RATES ARE STILL GREAT!



DUNNE & COMPANY
 RIVER HILLS MORTGAGE

Lending Locally Since 1989
Lowest Fixed Rates in Florida

4316 New River Hills Parkway • Valrico, Florida 33594

REDUCED PAPERWORK • SAME DAY APPROVAL
CLOSE IN 10 DAYS

Located at the entrance to River Hills Country Club

Call Tim Dunne at
654-1044



A.P.R. based on \$150,000 loan amount. Rates and terms subject to change.
 Rates were current at printing date. Equal housing lender.

Community Council Update

Expect Traffic Improvements at Alafia

Left Turn Lane, 3-Way Stop, New Drive-Through Lane Planned

A Bloomingdale Area Community Council Report

At the July meeting of the Bloomingdale Area Community Council, members were honored to have a very special guest - Sylvia McMillan, principal of Alafia Elementary School.

McMillan gave council members an update on changes at Alafia. First was the significant change in the number of students from 1300 to 700. With this change was also a loss of 22 teachers. The ratio of students to teachers is now 30 to 1 for intermediate students and 24 to 1 for primary grades.

Plans scheduled for completion in December 2002 to improve traffic flow around the school include a three way stop and left turn lane at the intersection of Culbreath Road and Natures Way, improved parking, and a new (no parking) drive-through lane. There will be three crossing guards at key intersections and two more to follow. Volunteers are needed to serve as crossing guards at two new positions - Natures Way at Springvale and Natures Way at Greenhollow.

More good news includes the removal of nearly all portable classrooms by the end of the year. A few will be kept for use by the PTSA and for storage.

Alafia's "Sneak Preview" open house will be held Aug. 5, 5:30 to 7:30 p.m. Parents are asked to follow all parking and driving rules to

insure the safety of parents and children. Additional parking is available at the Bloomingdale Little League on Culbreath Rd. and the Parks Maintenance building on Natures Way.

The council was glad to

have principal McMillan take the time from her very busy schedule to visit with them. The council will continue to support improvements at Alafia Elementary.

See Traffic, Page 10



MACK AUSTIN/Photo

The BACC extends its gratitude to Brenda Kah at Hillsborough County's Public Works South Service Unit for her outstanding response in coordinating the timely removal of this serious safety hazard on Bell Shoals Road. Did you notice this fifty-foot tree hanging over the road?

NEW ITEMS ARRIVING WEEKLY!

Caswell-Massey • Trapp Candles • Accent Tables
Beaded Table Toppers • Fountains
Table Top Decor • Candlesticks
Unique Baby Towels & Gifts

ORIGINAL ART BY MELETHA EVERETT

Royal Oaks Shopping Center
3240 Lithia Pinecrest Suite 101 • Valrico
(Corner of Lithia Pinecrest & Bloomingdale)
Open Monday through Saturday 10am - 6pm

813-643-9390

Majik Touch Cleaners
"EXPERIENCE THE DIFFERENCE"

- Apollo Beach 220 Apollo Beach Blvd, 645-1499
- Bloomingdale 3513 Bell Shoals Rd, 654-9292
- Bloomingdale 815 E. Bloomingdale, 681-8700
- Brandon 717 W. Lumsden, 654-9541
- Brandon 11393 Causeway Blvd, 643-6944
- Lithia 16739 Fishhawk Blvd, 654-7991
- Providence 1983 Lumsden Rd, 654-4423
- Seffner 1515 S. Parson Ave., 684-5897
- Bloomingdale 4344 Bell Shoals, 689-9176
- Bloomingdale 3248 Lithia-Pinecrest, 654-8113
- Brandon 913 W. Brandon Blvd, 684-4499
- N. Brandon 213 Kingsway Ave, 653-4535
- Plant City 2621 Thonotosassa Rd, 752-6631
- Riverview 11697 Boyette Rd, 672-1832
- Valrico 1965 E. Brandon Blvd, 654-2324

\$1.10 EACH
SHIRTS LAUNDERED
Valid on Incoming Orders Only - With \$5.00 Minimum Dry Cleaning Order, No exceptions, Limit 10. Blouses, Polo & Boxed Shirts extra
COUPON EXPIRES 9/1/02

\$5.00 OFF
ANY DRYCLEANING ORDER OVER \$25
Valid on Incoming Orders Only - No exceptions. Valid only w/ coupon, not valid w/ other coupons
COUPON EXPIRES 9/1/02

\$3.00 OFF
ANY DRYCLEANING ORDER OVER \$15
Valid on Incoming Orders Only - No exceptions. Valid only w/ coupon, not valid w/ other coupons
COUPON EXPIRES 9/1/02

20% OFF
WEDDING GOWN, DRAPERY CLEANING, BEDSPREADS, COMFORTERS, BLANKETS, ALTERATIONS
Valid on Incoming Orders Only - No exceptions. Valid only w/ coupon, not valid w/ other coupons
COUPON EXPIRES 9/1/02

Better Cars Deserve a Better Wash.



If you have a nice car, you should treat it right! Bring it to us for some professional pampering. You'll get a better wash because of our state-of-the-art system and high-end cleaners. You'll get better service because we're totally committed to being the best car wash on the planet. No ifs, ands or bugs.

Complete Detailing Service Available!

\$2.00 OFF ANY WASH
Excluding exterior wash.
Brandon Car Wash
228 W. Brandon Boulevard
Not valid with other discounts.
With coupon only. Expires 8/31/02 ICE #1

Full Service Special \$6.99
Vacuum • Cloth Wash • Windows
Air Freshener • Towel Dry
(add \$1 for SUV's and Vans)
Save \$2.00
Brandon Car Wash
228 W. Brandon Boulevard
Not valid with other discounts.
With coupon only. Expires 8/31/02 ICE #1

The Works \$18.99
(add \$1 for SUV's and Vans)
• Vacuum
• Wheel Cleaner
• White Wash & Tire Cleaner
• Tire Shine
• Cloth Wash
• Under Car Rinse
• Clear Coat Protectant
• Triple Foam Polish
• Towel Dry
• Interior Shine
• Windows Cleaned
• Air Freshener
Save \$3.00
Brandon Car Wash
228 W. Brandon Boulevard
Not valid with other discounts.
With coupon only. Expires 8/31/02 ICE #1

BRANDON CAR WASH & DETAIL CENTER
Better service... Better wash.
328 W. Brandon Boulevard
662-2404
Open Mon. thru Sat.

HELP WANTED! Full time with Sundays off! Apply in person Mon. - Thurs. 2 pm - 4 pm.

LARGE PIZZA ANY WAY YOU'D LIKE \$7.95
2nd Pizza \$6

Your Choice, up to 5-Toppings
No Double Portions Please
Delivery extra

Hungry Howie's Pizza & Subs
FREE Flavored Crust: Original • Butter • Buttercheese • Garlic • Poppy Seed • Sesame • Rye • Cajun

Bloomingdale 684-0988
819 W. Bloomingdale Ave. at Kings
Open for Lunch Sat. & Sun.

WE DELIVER

PIZZA & WINGS
Large 1-Topping Pizza
10 Howie wings,
Carrots, Bleu Cheese or Ranch Dressing
& Spicy Howie Stix
\$10.95
2nd Pizza \$6

Hungry Howie's Pizza & Subs
Delivery extra. Expires 8/31/02. Not valid with other coupons. (PH-8)

CARRY-OUT SPECIALS
HOWIE EXPRESS
One Large 1-topping Pizza
\$5.99

WACKY WEDNESDAY
One Large Cheese Pizza
\$3.99

Hungry Howie's Pizza & Subs
Carry-out only. Expires 8/31/02. Not valid with other coupons. (PH-8)

MIX & MATCH
Choose any 2 Favorite Meals:
Medium 1-topping Pizza
Oven-Baked Sub
10 Howie Wings
Large Chef Salad
Baked Pasta
\$9.95

Hungry Howie's Pizza & Subs
Delivery extra. Expires 8/31/02. Not valid with other coupons. (PH-8)

CROWD PLEAZER
One Specialty Pizza & One Pizza with 2-toppings
2 Medium 2 Large 2 Ex. Large
\$12.95 \$14.95 \$16.95

Hungry Howie's Pizza & Subs
Delivery extra. Expires 8/31/02. Not valid with other coupons. (PH-8)

Alafia: Let's Do (A Quicker, Quieter) Lunch

A Gazette Report

Kathy Adkins, food service manager at Alafia Elementary School, is looking forward to a manageable year in Alafia's cafeteria. Adkins, a Bloomingdale resident and Alafia employee for the past 13 years, said enrollment

reductions at the school, thanks to the opening of the new Cimino Elementary school this year, will allow more organized, quieter lunch times.

"Last year we had 48 classes coming through the cafeteria for lunch, and this year we're looking at about 27,"

Adkins said.

Aside from reduced student waiting time spent in lunch lines, Adkins said, "The noise level will be greatly reduced!"

To accommodate a bulging student population in years past, the school's multi-purpose room, which adjoins the cafeteria, was used on a daily basis to seat lunchers.

This year, Adkins said, the multi-purpose room will be closed off, and the cafeteria room alone will suffice.

As of July 26, Alafia data processor Michelle Wilson said 700 students had enrolled at the school.

Last year's enrollment topped 1,200 students.

Adkins said class lunch times, some of which began before 10 a.m. in 2001 to accommodate all 1200 students, will be moved forward this year. A final lunch schedule was not available before the first day of school.

With Alafia's enrollment down 40 percent from last year, Adkins said, "The best part is that the kids won't have to wait in line so long for their lunch."

"We've had so many comments from parents that their kids (buying school lunches) didn't have enough time to eat after they finally got to the front of the line. This [reduced enrollment] should really help that problem," she said.

Adkins anticipates the usual kinks in the system during the first few weeks of school, most notably the ability of students to remember their seven-digit "Fast Lane" code, a necessity for every student ordering school lunch. She encouraged parents to review the number with their children to avoid delays and confusion.

In addition, Adkins said pre-payment envelopes are available in the school kitchen, eliminating the need for parents to hunt for lunch money during busy mornings and for students to search for it in their backpacks.

One thing that won't change in the Alafia cafeteria this year?

"Friday is always the busiest day," Adkins said. "It's pizza day."



LAURA FRAZIER/Photo

Kathy Adkins has served as Alafia's food service manager since 1989.



Make this your child's best school year ever.

The sooner Huntington steps in, the faster grades step up.

When it comes to helping kids with the new school year, no one does it better than Huntington. If your child struggles with homework, can't keep up with new classwork, or just wants to get ahead, call us. We can help. We can diagnose what is keeping your child from being his or her best and create a program of instruction tailored to his or her needs. Just a few hours a week can improve your child's skills, confidence, and motivation.

reading writing

math spelling

phonics study skills

confidence motivation

self-esteem



Brandon 813-681-1500 **Carrollwood** 813-908-1000 **Palm Harbor** 727-937-8400

260228



LAURA FRAZIER/Photo

Fourth-grader Heather Reed helps her mother Debbie fill out registration forms for Alafia Elementary. As of July 26, 700 students has registered at the school. Last year's enrollment topped 1,200.



Grace Christian School

28 Years

"Academic Excellence with a Christian Emphasis"
Kindergarten through 12th Grade



REGISTER NOW

- Full Athletic Program with Boys' and Girls' Sports Elementary, Middle and High School Sports
- Music, Art and Drama Programs
- Advanced High School Math & English Programs
- Our Students' SAT Scores are in the top quartile in the nation
- A Beka Curriculum
- Accredited by the Florida Council of Private Schools
- State-of-the-Art Computer Program (1st-12th)
- Computer Technology Academy (9th-12th) (Ranked 1st in State in Computer Graphics)
- Optional 12 Month School Program Available
- Extended Care



KINDERGARTEN

Our Kindergarten S.A.T. scores are in the top 99 percent in reading in the nation. Kindergarten Children will experience many new and exciting adventures as well as learning academic skills such as Reading, Writing, and Math.

Our facilities are the finest, most modern in the area with spacious classrooms, labs, locker rooms, a gymnasium/ auditorium and new fine arts facility on a beautiful 20 acre campus.

For additional information, please write or call:
Dr. Bob Gustafson, Grace Christian School,
P.O. Box 843, N. Valrico Rd., Brandon, FL 33509

(813) 689-8815 or 689-9781

VISIT US AT www.gracechristianschool.com

258275



MACK AUSTIN/Photo

This area on Canoga Drive will soon have long-awaited sidewalks installed, providing much safer walking conditions for nearby residents and those using the Culbertson Recreation Center.

County, Resident Teamwork Facilitates Improvements

Sidewalks Set For Canoga Park Near Rec Center

By MACK AUSTIN

Hillsborough County staff recently held one of several public meetings to present a list of new sidewalks to be funded

and constructed in fiscal year 2003. These meetings are part of the county's Proposed Sidewalk Construction program.

Like many communities in Hillsborough, Bloomingdale has several areas that are in critical need of sidewalks. Trying to keep up with these needs is a never-ending task for county officials and engineers. Working directly with the communities has proven to help officials identify and prioritize projects, and to work together to fill the requirements. It has also enabled members of our community to become directly involved in planning improvements. Most of all, it has clearly demonstrated the importance of a coordinated effort in community planning.

Our community is grateful to the county staff members involved in this project for their professional assistance and work to improve Bloomingdale. We look forward to continuing to actively coordinate and communicate with them on future projects.

Traffic

From page 6

The Bloomingdale Area Community Council is composed of volunteer residents who work directly with local law enforcement and county departments to research issues and concerns brought

to the attention of council members, Community Deputy Pete Maurer and Community Service Officer Sandy Capitano. The group meets monthly. Information: 635-8040.



MACK AUSTIN/Photo

Any Bloomingdale resident that notices a street sign that is damaged or a traffic signal that is not operating should call the Public Works Traffic Operations Section at 744-5670. Please do not call the South Service Unit; they do not maintain signs.

Nail Pro

Back to School Special

- Complete Nail Care
- Specializing in Gel Nails
- Acrylic: Pink Whites
- Airbrush Art by Hand
- State Certified Technicians
- We accept all Competitors' Coupons for acrylics

FULL SET
\$18⁹⁹ Reg '25
w/coupon only
Exp. 8/31/02

FILL INS
\$12⁹⁵ Reg '15
w/coupon only
Exp. 8/31/02

SAVE \$5
Manicure & Pedicure
Now only \$25⁰⁰
Exp. 8/31/02

WAXING EYEBROW
\$5⁰⁰ Reg \$8⁰⁰
w/coupon only
Exp. 8/31/02

Bloomingdale
Bell Shoals
SUN TRUST BANK
Cleaners
Nail Pro
Papa John

3515 BELL SHOALS RD
655-8406

Bank Welcomes Bloomingdale Neighbors

A Gazette Report

Pamela Isaac, a Bloomingdale resident and assistant manager of Southern Exchange Bank on Lithia Pinecrest Rd., would like to extend a special welcome to her neighbors.

Isaac invites Bloomingdale residents to stop by the bank to explore Southern Exchange's products and services, and to consider a special promotion offered exclusively to Bloomingdale residents.

Isaac will provide a complimentary safe deposit box free of charge for one year to any Bloomingdale resident opening a new checking account in the month of August.

"We'd like an opportunity to show Bloomingdale residents how committed we are to being their hometown bank," she said.

Southern Exchange Bank, established in 1923, is the largest independently owned bank in the county, Isaac said. Owner David Strasz and CEO Richard Weatherby currently oversee 17



LAURA FRAZIER/PHOTO

Southern Exchange Bank manager Robin Sideratos, left, and assistant manager Pamela Isaac.

branches throughout Hillsborough. The Bloomingdale branch, formerly Columbia Bank, was purchased by Southern Exchange in February 2000.

"We are a full service financial institution, offering very competitive products and services," Isaac said.

"We look forward to growing along with the Bloomingdale community and developing new products and services to

meet our clients' changing needs."

The bank is located at 3402 Lithia Pinecrest Rd., at the southwest corner of Bloomingdale Avenue. Information: 685-1741 or visit www.southernexchangebank.com.

Want to see your Bloomingdale area business profiled in The Gazette? E-mail frazier1@tampabay.rr.com or call Laura Frazier, 681-2051.

Famous for Cheese Steaks, Hoagies & Roast Pork



Joey's Famous Philly Steaks



eat in,
take out
or delivery
(\$20. min)

662-5300

now offers:

Pasta Dishes!

every day 4:00-8:30
daily selections of imported pastas with homemade sauces!

Dinner Special:
Pasta, Salad & Garlic Bread \$7⁹⁹

Homemade desserts • Cannolis • Italian ice
921 Lithia Pinecrest

Cimino

From page 1

The school's open house preview will be held Monday Aug. 5 from 6 to 8 p.m. In order to avoid long waits to meet teachers and explore the school, Frost invited students with last names beginning A - L to visit from 6 to 7 p.m., and those with names M - Z from 7 to 8 p.m. The general public is also invited to tour the school.

"We are eager to showcase our beautiful new school and to meet our new students."

This Wednesday, 820 incoming Cimino Cougars will ascend on the school. Cimino's attendance boundaries draw primarily from the southernmost section of Bloomingdale East and also include a satellite group of students from neighborhoods along Bell Shoals and John Moore roads.

In accordance with school district policy, bus transportation will not be provided to a majority of Cimino's students, those living in

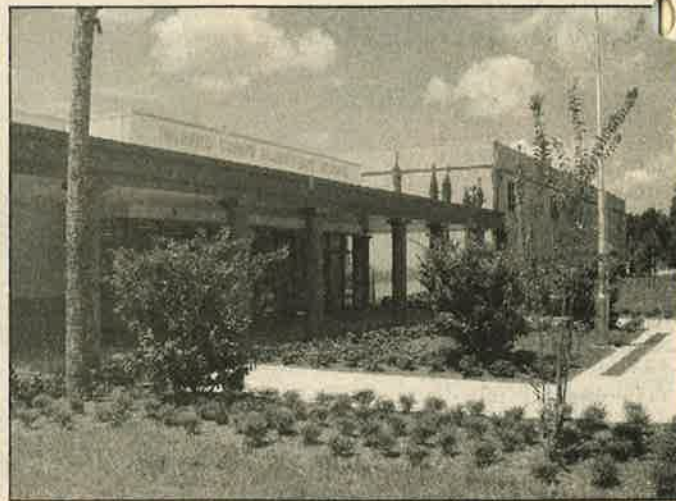
Bloomingdale East within two miles of the school. As a result, Bloomingdale Deputy Pete Maurer cautioned motorists to expect many student walkers and bike riders in the neighborhood this year. In addition, Maurer noted buses would not be provided for Bloomingdale East students attending Alafia Elementary School, two miles north of Cimino on Natures Way.

"There are going to be a lot of kids walking and biking to school in Bloomingdale this year, and we'll probably see an increase in parents driving their kids too," Maurer said.

"Drivers need to slow down, obey the traffic rules, and give themselves extra time in the morning to get through the school traffic."

Some parents are concerned about students walking to school along busy roads in areas without sidewalks.

Frost said at least three



Cimino Elementary School

LAURA FRAZIER/Photo

crossing guards will be posted along Natures Way; one near neighborhoods south of the school to cross students over to complete sidewalks on Culbreath Rd., one to cross students from the south corner of Natures Way/Culbreath over to the north side, and one to help students across Natures Way to the school entrance.

In addition, "School safety officials will be here for the first couple weeks to monitor the [pedestrian] plan and see if it needs any adjustments."

"Everyone will need a lot of patience at first, and I'm sure there will be some kinks to work out, but we have a plan," Frost said.

"This is going to be an incredible school."

Candidate Forum

Meet Candidates At Bell Shoals Baptist Aug. 18

By LIZ FOX

The community is invited to meet and ask questions of state, county and local candidates representing the Brandon area at the Bell Shoals Baptist Church annual Candidate Forum on Sunday, Aug. 18, 5:30 p.m. The church's Community Issues Committee is interested in all voters being informed of the issues and making informed choices on Election Day.

Attendees will have one hour to meet and talk to the candidates personally in the special events center. The forum will then be held in the auditorium, where candi-

dates will have a chance to respond to specific issues of interest to the community. Refreshments and personal time with the candidates will follow at 8:30 p.m.

Candidates running for all offices including county commission, state, school board and judgeships have been invited. Many have already responded positively.

Bell Shoals Baptist Church is located in Brandon at 2102 Bell Shoals Road, south of SR. 60 between Lithia Pinecrest Road and Bloomingdale Avenue. No reservations are required. For more information, contact Terry Kemple at 681-3569.

Commissioner's Corner

Storms' Brew Over Watering Restrictions

I know many of you are practically purple with rage over the watering restrictions, and I don't blame you. As you may know, I am pretty angry myself, both because I believe Southwest Florida Water Management District (SWFWMD/SwiftMud) is being patently unfair and because my entire family and I also live in the restricted area. I am very sorry that, through no fault of your own, this has happened to you.

Many of you have written and/or called me in an absolute irate state because you believe my district, District 4, is being discriminated against since we are the only area in the entire county being crushed under the heavy weight of SwiftMud's penalty boot. In fact, we are the only area in the entire tri-county area of similarly situ-



County Commissioner Ronda Storms

ated jurisdictions that SwiftMud has chosen to punish with the weight of an administrative complaint.

SwiftMud says we in Hillsborough County have not done enough to conserve

water, yet Hillsborough County has over 7,000 reclaimed water customers with literally thousands begging to be hooked up. Hillsborough County does not have enough reclaimed water to give to everyone who wants it. Compare Hillsborough County to the City of Tampa: until very recently, Tampa had a mere three (!) reclaimed water industrial customers, and do you know what they do with their excess reclaimed water? They dump it into Tampa Bay on a daily basis. How much, you ask? Try 40 to 80 million — yes, that is million — gallons per day.

Many of you may have seen me quoted in the paper or on the television referring to SwiftMud as a bully and comparing SwiftMud to the infamous naked Emperor of

Aesop's Fables. In my opinion, SwiftMud and Tampa Bay Water are essentially telling District 4 residents that: 1. We have to provide the water to the tri-county area; 2. We bear the environmental risks to our communities; 3. We bear the burden of having our neighborhoods torn up from all the construction, 4. We bear the burden of the higher water rates, but 5. We don't even get the water we need?

I do not believe this bullying from SwiftMud is about protecting the environment. I believe District 4 is being singled out for political reasons.

In my view, if this were about protecting the environment, SwiftMud would be shutting down all recreation-

See Storms, Page 14

Your "Personal Gardener"

More than just a quick cut, we offer complete gardening and landscape services including but not limited to:

Weekly Lawn Service	Tilling of beds or gardens
Laying Sod	Mulch or Rock Spreading
Minor Excavating	Irrigation or Sprinkler Repair
Pressure Washing	Landscape Lighting
Tree or Hedge Trimming	Plantings of Trees, Bulbs or Plants

Give us a call for a Free Consultation.
We can do your job for you or offer a helping hand!

813-477-9948

Licensed & Insured

DANCE • DANCE • DANCE

Shirley's Dance Studio

ANNOUNCES FALL REGISTRATION

Aug. 3rd 9am-3pm

Pre School thru Adult (Beg.- Professional)
Combination Classes Available
Family Discounts

- Ballet (all styles)
- Pointe
- Tap
- Irish
- Clogging
- Flamenco
- Modern
- Jazz
- Hip Hop
- Acrobatic
- Adagio
- Ballroom

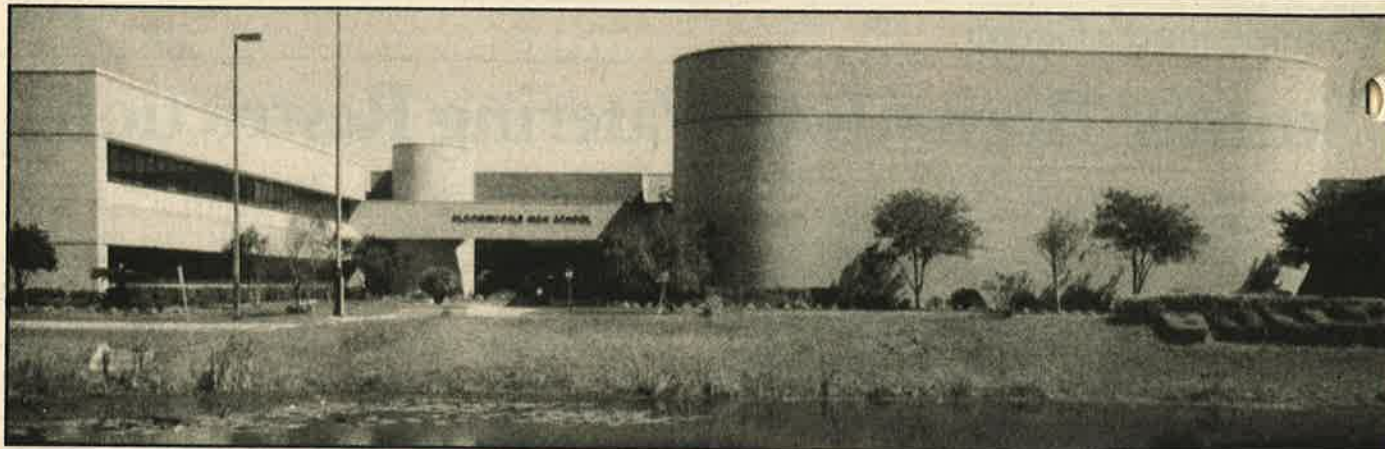
Space is Limited, REGISTER NOW!

Suspended Wood Floors and 2 Teaching Rooms with Viewing Windows

Member D.M.A.
Shirley Cuscaden,
Director
est. 1971

4326 Bells Shoals Rd.
Village Center
685-7289
www.shrlydance@aol.com

Say you saw it in The Bloomingdale Gazette



MACK AUSTIN/Photo

Bloomingdale High stands quiet and peaceful now... but just wait until Wednesday when the first bell of the new school year rings! Thanks to coordination by school board safety officials and public works traffic engineers, a new traffic signal has been installed at the school's east entrance off Bloomingdale Avenue.

Bloomingdale High Gets New Roof, Traffic Signal

By MACK AUSTIN

Bloomingdale Senior High School, like all of the schools in our area, stands ready to receive hundreds of students eager to learn and study. Excited teachers and administration have been preparing for their arrival.

Two major projects

designed to enhance the environment and improve safety at Bloomingdale High are scheduled for completion soon.

A new traffic signal at the school's east entrance off Bloomingdale Avenue is programmed to operate during peak traffic hours to ease congestion and improve safety.

Sheriff's deputies can also activate the signal during special school activities like athletic events. Plans call for the signal to be operational in September.

Another project is the installation of a new roof on the school's main building. This project will enhance the structure of the building and improve its environmental capabilities.

A reminder for current and new parents with students at Bloomingdale High - the

school's "Reading Enhancement Program" has proven to be outstanding in helping students improve their reading skills.

Magazines are collected and used to motivate and assist students in developing their reading skills. Call the school at 744-8018 for details about donating magazines to this special project. Magazines can also be dropped at the Bloomingdale Community Station on Bell Shoals Rd.

Storms

From page 13

al water pumping in District 4, rather than just the citizens. For instance, how many golf courses in the South Central Regional Wells has SwiftMud shut down to protect the environment? The answer to that question is telling, which is why I voted with my colleagues to fight SwiftMud's administrative complaint. SwiftMud might enjoy their present ability to twist our arms, but Hillsborough County will use every legal tool available to prevail in this battle.

Many of you have correctly observed that the reason District 4 uses so much water is because of the growth in the area, and you are right. When I came into office in 1998, I was shocked to know that the area around Lumsden/I-75/Faulkenburg is slated for some of the most dense development in the county. All that

heavy development along Lumsden and Providence was approved in 1983, and the rest of the intensive development in that area was approved in 1989. Many of you know that the FishHawk development was approved in 1989.

I encourage you to continue to express your opinions on this matter. Please contact your state legislators, your state senator, your District 4 SwiftMud appointee, Janet Kovach 247-5531, the chair of SwiftMud, Ronnie Duncan 287-0070 and the Executive Director of SwiftMud, Sonny Vergera (800) 423-1476.

Ed. Note: The preceding is an excerpt of Comm. Storms' July 2, 2002 open letter to Bloomingdale residents. To view the entire letter, visit www.BloomingtonGazette.com. Comm. Storms may be reached at 272-5740.

Kitchen Solvers

Complete Kitchen Remodeling Services!

Kitchen Remodeling Specialists Since 1982!

The Choice is Yours...

- * Custom Cabinet Refacing
- * Elegant Custom Cabinetry
- * Solid Surface Countertops by Montelli & Corian
- * Kitchen Design & Planning
- * Kitchen Accessories

Ranked by Success Magazine as America's #1 Kitchen Renovation Company!

Locally Owned & Operated
Complimentary In-Home Estimates
(813) 681-1416
Call Today!

Materials & Installations Completely Guaranteed
Licensed-Bonded-Insured

255380



MACK AUSTIN/Photo

Cattle grazing in the warm sun on an open field - a site the residents of Fish Hawk Ranch can still enjoy. A recent county land purchase approval will allow for more open land and wildlife in Fish Hawk.

County Purchase Of 1,450 Acres In Fish Hawk Approved

That's 2,569 fewer homes, 6,000 fewer cars

By MACK AUSTIN

Most Bloomingdale residents are well aware of the new home developments and construction in and around our community.

One of the largest new developments in our area is Fish Hawk Ranch, south of Bloomingdale and east of Bell Shoals Road. Fish Hawk

Ranch was originally approved to build out with 7500 homes.

This large a development would definitely have had a significant direct affect on Bloomingdale, especially in terms of traffic and water usage.

Recent plans were approved for Hillsborough County's Environmental Lands Acquisition and Protection Program (ELAPP) to purchase 1,450 acres for preserving natural habitats and

a wildlife corridor. This is great news for all of Hillsborough County, especially as it seemed we were slowly losing all of the beautiful natural areas we enjoy.

An estimated 2,569 homes will not be built as a result of this purchase. Another way of looking at it is over six thousand fewer cars will be added to the already heavy traffic flow.

It will also mean a smaller demand on our already critical water shortage. With traf-

fic and water both serious concerns for everyone, this reduction is a welcome change.

Development within the Fish Hawk Ranch community does continue, with the projected completion of the new high school in August 2003.

We wish our new friends and neighbors in Fish Hawk Ranch much success as they continue to develop their community.

Fall Class Registration

Morning and Afternoon Classes for Adults
Beginners Always Encouraged
Classes scheduled all day
(convenient for home schoolers)

After school classes for children and adults
during the week and on weekends

FREE LESSON
Present this coupon for a
FREE INTRODUCTORY LESSON
Free lessons scheduled August 6-10

PARAGRIM RIDING ACADEMY

Contact Andy at (813) 689-1814
Located in the Bloomingdale area of Brandon

Look for
Your
Neighborhood
News in
The
Bloomingdale
Gazette

260226

Station Provides Safety, Security, Support

By MACK AUSTIN

One of the greatest assets we as Bloomingdale area homeowners and as citizens is the Bloomingdale Community Station.

Community stations are the result of a very effective community-policing program put into place several years ago by the Hillsborough County Sheriff's Office. The focus of program was to put law enforcement officers into the heart of the community. These officers would be located where all residents can have access to them as a source of information, guidance and support. These officers would also become directly involved with community groups, homeowner's associations and concerned residents through the formation of informal community councils.

It's safe to say that Bloomingdale has the best commu-



MACK AUSTIN/Photos

The Bloomingdale Community Station is at 4342 Bell Shoals Road, near Beef O'Brady's restaurant in the Village Center Plaza. Station hours are Monday through Friday, 8 a.m. to 5 p.m. Information: 635-8040.

nity station in our county. Ever since it went into operation several years ago, we have had outstanding support and sincere dedication

demonstrated by our Community Resource Deputy, Pete Maurer; our Community Service Officer, Sandy Capitano, and all the law enforcement officers who have worked in and out of the station. They have all truly made a significant difference in the safety and security of our community.

The community station is an extension of the Sheriff's Office. The station is open Monday through Friday from 8 a.m. to 5 p.m. However, on some days, Deputy Maurer and Officer Capitano are required to perform special duties or attend scheduled training and may be away from the office.

One of their primary duties is to provide information or give referrals to other county departments such as public works, code enforcement, or any of the other numerous County departments. Deputy Maurer or Officer Capitano can be reached at the station at 635-8040. Residents needing immediate assistance in an emergency must call directly to the Sheriff's dispatch center at 247-8200 or call 911, depending on the emergency.

In terms of law enforcement, Deputy Maurer pro-

vides assistance to schools in controlling or monitoring traffic and coordinating other safety issues.

One of his primary duties is keeping the community station open and running. Maurer also coordinates the numerous activities of the Bloomingdale Area Community Council.

The council works directly with county departments such as Commissioner Storms' office, the Sheriff's office or public works on items of concern to our community.

Officer Capitano provides assistance through the many programs in which she is involved. She also collects magazines for the Bloomingdale High School reading program. She also provides fingerprinting and car seat checks by-appointment.

You can clearly see just how directly involved Deputy Pete Maurer and Officer Sandy Capitano are in our community. As Maurer says, "We are both very proud to be working with the residents of Bloomingdale in providing a safe and secure community. We truly appreciate all of the assistance and support the community has given us. It is always a great team effort."



The Bloomingdale Community Station has had many distinguished visitors including Chief Deputy David Gee, shown here with Deputy Maurer after a recent Community Council meeting. At the meeting, council members were able to discuss security and law enforcement issues directly with Chief Gee.

Letters

Send letters to Editor, 3509 Bell Shoals Rd., Valrico, FL 33594 or e-mail to letters@BloomingdaleGazette.com. All letters are subject to editing.

Street Games Are Street Legal

Neighbors & neighborhood, both good words with good meanings, unless you live in certain parts of Bloomingdale according to two "Name Withheld" letter-writers (June, July 2002 Gazette). These two writers would have you believe some neighborhoods are on their last legs because of no local neighborhood association, which they think is needed to create some localized rules.

What they seem to forget is that there are already plenty of rules out there. Working together when there is a perceived problem is a better solution.

One writer (July 2002) complains about football, baseball or hockey games in front of their home and how it damages their flowers, plants & shrubs. If this is happening, then this is something that should be discussed between the parents & the affected parties.

The writer asks, "What can we do about...the games played in the streets in front of our homes?" Well, discussion has recently taken place between some of our residents and officials at the Bloomingdale community station. The deputy we spoke with stated there is no law prohibiting children from playing. He reminded all parties that Bloomingdale is a neighborhood, and it is normal and to be expected that children will be playing in the neighborhood, including the street.

Children playing some healthy sports is much better

See Letters, Page 20



Photo courtesy Brandon Broncos

Broncos Win Parade Kudos

They braved the heat and stomped their feet, then the Brandon Broncos cheerleaders received the "Best Youth Cheerleading Squad" award in Brandon's annual Fourth of July Parade.

The Ultimate Fun & Sun Getaway Just a Short Tide Away.



from **\$119*** Bloomingdale Resident Rate

Rate Includes: Full Daily Breakfast for Two

Located on the sparkling waters of the Gulf of Mexico and the world's whitest beaches, the Hilton Clearwater Beach Resort invites you to enjoy a nearby getaway that includes fabulous amenities for the entire family.

Fun Factory Kids' Recreation Program · Free Gift for Kids
Two Heated Pools · Pool-side Snacks · Reflections & Sand Bar Grill
Beachside Coasters Lounge · Complete Watersports Activities



Hilton
CLEARWATER BEACH RESORT

400 Mandalay Avenue · Clearwater Beach 33767

RESERVATIONS
800-753-3954

Please Ask For Package "P4"

www.hiltonclearwaterbeachresort.com

257935

*Rate per room per night, subject to availability. \$119 rate valid Sun-Thurs, only from \$139 Fri-Sat. Offer valid thru 12/27/02 on new reservations only. Not valid for groups or with other discounts or offers. Applicable tax & resort fees not included.

Therapeutic Skin Care

Repair Your Skin's Health and Beauty

Our therapeutic treatments safely and gently restore damaged skin using the best paramedical techniques available. None of our treatments require any type of sedation or significant recuperation.

Microdermabrasion

A non-invasive, non-chemical process that uses a highly controlled spray of inert crystals to remove the outer layers of exposed skin, stimulating cellular re-growth and revealing the younger, tighter and more radiant skin underneath.

Treats skin conditions and imperfections such as age spots, sun damage, acne scars, fine line, wrinkles and more.

Regularly \$100 now \$50



FREE Consultation

Alon Clinical Skin Care and Acne Clinic

Cristene Haynes, CME
Clinic Director

651-4111

F. Ojeda, MD
Medical Consultant

323 E Robertson St.
Brandon, FL 33511

Limited Time Offer
Credit cards accepted

Truck

From page 2

ers to re-route tractor-trailers carrying hazardous materials away from their neighborhoods, schools and businesses. The group contends spiraling residential growth and traffic in the area, combined with a recent increase in tanker truck traffic, is a hazardous combination.

The residents want truck load limits posted on Lithia Pinecrest, in effect prohibiting large tractor-trailers from the two-lane, unimproved road.

County officials have said that no legal engineering reasons exist to ban trucks from the road. But residents say public health, safety and convenience are all the reasons commissioners should need to post load limits.

Perry Dawson, president of the Mason Oaks subdivision off Lithia Pinecrest Rd., said homeowners in his neighborhood have major concerns.

"Our number one priority

is safety and the general welfare of our all our communities," Dawson said.

"This (July 22) accident may not have resulted in a death, a chemical fire or an explosion, but the potential absolutely exists and our residents are concerned about it."

Ted Grable, president of the Bloomingdale Homeowners Association, said, "The BHA board continues to object to any routing of trucks through residential areas, especially on unimproved roads like Lithia-Pinecrest, Boyette and Bell Shoals roads."

Residents who wish to petition commissioners to post the load limits may wish to use the petition form in this issue. The form and e-mail instructions, and more articles about this issue, are also available online at www.BloomingdaleGazette.com.

Rescue Workers Comment On Latest Wreck

Firefighters at the scene of the July 22 tanker truck accident on Lithia Pinecrest Rd. said in addition to the fertilizer spill, the truck incurred a slight diesel fuel leak, which emergency workers plugged at the scene, and a significant oil spill from the engine of the truck.

Although raw phosphate itself is not considered a hazardous material, firefighters said fertilizer is extremely flammable when it comes into contact with diesel fuel.

"Mixing the contents of the storage tank and the contents of the fuel tanks [on some of the phosphate industry's transport trucks] could cause a catastrophic explosion," workers said, noting the explosives used in the Oklahoma City bombing in 1995 were created using a mixture of phosphate fertilizer and fuel.

Firefighters and recovery workers at the July 22 accident scene built a makeshift dam to prevent the spilled materials from coming in contact as they vacuumed up the fertilizer.

Captain Ray Yeakley, Hillsborough County Fire Rescue spokesperson, said the amount of miles the truckers drive vs. the amount of accidents they incur is relatively very small.

"But if there is a feasible, safer alternative [to using Lithia Pinecrest and Bloomingdale Ave.], it's something we should look at."

Petition Form

Date _____

(Check one)

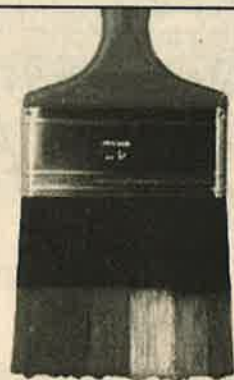
 Sent by mail to:Hillsborough County Board of Commissioners
2nd Floor, 601 E. Kennedy Blvd.
Tampa, FL 33602 Sent by fax to Comm. Easterling - 272-7046;Norman - 272-7047; Scott - 272-7048; Storms - 272-7049;
Hart - 272-7052; Platt - 272-7053; Frank - 272-7054. Sent by e-mail form at:www.hillsboroughcounty.org/mail/email.htmlTo: Hillsborough County Board of Commissioners
Re: Lithia Pinecrest Rd. Truck Traffic Load Limits
Subject: July 24, 2002 BOCC Hearing

As a Hillsborough County taxpayer, registered voter and resident of the greater Bloomingdale area, I, _____, residing at _____,

_____, for reasons of public health, safety and convenience, am opposed to the use of unimproved roads and/or those in close proximity to high-density traffic and/or residential areas by tanker trucks hauling hazardous materials. I respectfully request that the Hillsborough County Commission, at its July 24, 2002's meeting, take action to prohibit said trucks from Lithia Pinecrest Rd. by any available means, including imposing load limits.

Signed, _____

Phone: _____



Tom Hayden

Painting
& Pressure WashingResidential & Commercial
FREE Estimates

654-1313

Fax 653-2491

Bonded-Licensed-Insured #PA 4506

Let Us Color Your World!

Substation Notes

Back To School Safety Rules

By DEPUTY PETE MAURER and OFFICER SANDY CAPITANO

call. Accidents caused by distractions such as cell phones will also cost you in dollars.

School Starts Aug. 7

The 2002 - 03 school year begins next week. With it comes some very serious concerns and the need for changes. The first concern is for the safety and protection of the thousands of kids headed back to school. Many will be walking or riding bikes to school for the first time, with some walking or riding in areas without sidewalks. For some, the trip to school will be very long due to school bus restrictions.

Parents, take the time to sit down and talk to your kids about the importance of being safe. Be sure to include information on safe bike riding - wearing helmets, crossing only at crosswalks and obeying all bike-riding rules. Discuss the importance of being careful when approached by strangers. Walk or ride in groups. Go to and from school by the route you have been told to use. Stay at your bus stop and watch out for cars.

For latchkey kids, stress the importance of staying inside, knowing the emergency numbers and numbers for parents or friends, following the rules set for using kitchen appliances and not talking to strangers.

Parents, you have to adapt too. Make your plans to include extra travel time. More schools have opened up. This means more buses and slower traffic. Make sure all of your passengers are buckled up! Watch out for school buses. Remember, you must stop for buses on Bloomingdale Avenue west of Bell Shoals where there are no medians. Set the right example as a driver; your kids are watching you! Don't talk on the phone and drive. The safety of your kids and other kids is much more important than any phone

Stop Both Ways For Buses

There will be thousands of children in our area riding school buses and waiting at bus stops. Most school buses do not have seat belts. Imagine being the school bus driver watching for drivers in a hurry and trying to keep a busload of excited kids sitting down and holding on. Florida law requires all cars traveling BOTH WAYS on roads without medians to STOP for school buses. This law applies to all traffic on Bloomingdale Avenue west of Bell Shoals. Also, give yourself more distance between other vehicles and especially the buses in front of you, and slow down. An accident will cost you a lot of time, money, and possible pain and suffering.

Bike Helmets - It's The Law

Many young students will be riding their bikes to school, especially to Alafia Elementary and the new Cimino Elementary in Bloomingdale. Florida law requires them to wear bike helmets.

Head injuries are very serious and can be fatal. You want your kids to really enjoy this new school year. Don't let them be one of the hundreds of kids and adults seriously injured each year, some critically, because they weren't wearing a bike helmet. Parents, if you ride bikes with your kids, wear your helmets too.

Alafia Parking Improvements - Soon

A special note to all parents with students at Alafia Elementary - the parking problems are still there. Improvements have been made and more are in the

See Substation, Page 22



Photo courtesy MOMS Club of Bloomingdale

MOMS Club Elects New Officers

MOMS Club of Bloomingdale president Sandee Peik pins newly elected president Kathi Hayes at the group's spring luncheon in June. MOMS Club is a national non-profit organization specifically for at-home mothers. Local chapters have monthly meetings, park days, holiday parties, field trips, play groups, arts and crafts, moms night out and more. Most activities take place during the day. Information: Meghan Foster, 657-8503.

Serving Individual Investors Since 1871

Retirement Plans	Life Insurance
Mutual funds	401K Review
Bonds/Stocks	IRAs/CDs
Government Securities	Money market funds



And now serving coffee in Valrico/Brandon

Join me for our monthly round table discussion at Dan's office on Friday, August 23 at 9:00 a.m. We'll share ideas about current events, the economy, investing and a few cups of coffee. This month's topic is Asset Allocation. The coffee's on me!



Dan Sammons, CLU
(Just Off Lithia-Pinecrest next to "Car Wash on The Greens")
3616 Erindale Drive
Serving Brandon,
Bloomingdale & Valrico
Bus: 813-681-1462

Edward Jones
Serving Individual Investors Since 1871

Letters

From page 17

in my book than having them hang around on a corner or at the mall, etc. If you have a problem with a child in your yard, discuss the situation rationally with the parent. If you have finished raising your own children and don't like having children for neighbors, then there are some nice homes down south at Sun City Center available for you.

Jeff Garrett
Bloomingdale East

Officials Keep On Truckin', Pumpin'

Maybe someone can tell me why we pump 5 million gallons of pure spring water daily from Lithia Springs to Cargill Fertilizer Company? We just renewed this insanity to continue for the next 20 years, at such a reduced rate that it would make a CEO weep.

That [Cargill] agreement should be shredded and

thrown out. Do you realize not only the amount of revenue this would have created, to say nothing of the current watering ban, which is just as asinine.

And once again, we are postponed, or should I say stonewalled, by another special interest group - the trucking industry. The commission postponed their decision on the Lithia Pinecrest Rd. truck route issue for an additional 90 days, when hopefully thoughts of high school football games and planning holiday projects will occupy everyone's time.

I would like someone to start a campaign to look into what other assets the special interests are influencing in our area. I am beginning to wonder whether Comm. Storms is up to the task of taking on the big boys, or just going along to get along.

Not to open another can of worms, but how does poor New Tampa escape our same fate? Planning? Rain danc-

ing? This part of town was rural. We had, and have, plenty of resources. It's time we find out what truly is going on in this area. It is not a lack of water.

Dale Quade
Windsor Woods

Candidate Hopes Experience Counts

I have announced my candidacy for the Hillsborough County School Board district IV seat, and your support will be very much needed.

During the past 39 years, I have been preparing myself to serve in this capacity; 12 years as a math teacher, basketball coach, athletic director, and department head, six years as an assistant principal, eight years as a principal, and thirteen years as general director for the Plant City/Brandon area school district.

My interest in serving on the school board is based on a number of important issues: I support the continued involvement with the county commission and the planning commission to improve the Inter-Local Agreement. We must work with the county commission to share

facilities at all new sites.

Transportation costs the system approximately thirty-four million dollars per year. Schooling students closer to home could reduce this.

Provide a quality education for every child at every site.

Expansion of area offices to include division personnel to increase communication between community, schools and district offices.

We must successfully come up with a plan to hire and retain good teachers. Why not motivate our own county school populations?

I believe the school board sets the tone for the system by having a common sense approach, which I support. My goal is simply to make sound decisions that will improve the instruction programs for all students in Hillsborough County Schools.

Thank you for your support. I can be reached at 752-5510.

Larry Martin
Candidate for Hillsborough County School Board District IV



Larry Martin

Ed Note: District IV School Board member Joe Newsome, retiring this year after 24 years on the school board, is vacating the District IV seat. Martin's opponents are John Werner of Brandon, Jennifer Faliero of Valrico, and Cliff Roberts of Lithia. The school board primary election will be held on Sept. 10 and the general election takes place on Tuesday, Nov. 5, 2002

Scout Collecting Donations For Kids

A Gazette Report

Bloomingdale High student Philip Colesanti of Boy Scout Troop 61 in Valrico is working on an Eagle Scout project to benefit the children of abused mothers. He is working in cooperation with The Spring of Tampa Bay. Colesanti is collecting new

donated baby items, toys, clothing and school supplies for children from infants to teenagers.

Donation boxes will be at Wal-Mart in Bloomingdale Square and Office Depot at 10057 S. Adamo Drive, from Saturday, Aug. 3 to Saturday, Aug. 24. Information: 681-8889.

Homeowners, Taxing District Reps Attend County Meeting

A Gazette Report

The South Service Unit of the Hillsborough County Public Works Dept. held a meeting July 10 with local civic organizations to explore ways the agency can better serve customers. Bloomingdale Homeowners Association director Steve Heckel and Bloomingdale Taxing District property manager Al Devney attended on behalf of our community.

County personnel at the meeting included engineer Willie Lavandeira, senior crew leaders Dave Galusha and Brenda Kah, maintenance services reps Charles Holland and Kevin Myers. County reps passed out brochures detailing the maintenance responsibilities of the South Service Unit including ditches, canals, ponds, stormwater systems, mowing operations, mainte-

nance of roads and shoulders, sidewalk and safety fence repair, brush and tree trimming and emergency pumping and sand bag issues.

Lavandeira and Galusha presented plans to make the South Service Unit more resident-friendly and reviewed some of the projects they have already completed in Bloomingdale.

Heckel zeroed in on problems with drainage culverts, and "Green Truck Al," Bloomingdale's property manager, noted some of the maintenance items in Bloomingdale requiring county assistance. Devney praised the workers for their quick and professional response to many of the requests that he phones in to the unit.

The unit reps provided the accompanying list of frequently called county numbers. If you require assistance resolving a Bloomingdale

Hillsborough County Services Frequently Called Numbers

Mosquito Control	554-5025
Poison Control	653-4444
Roadway Maintenance	671-7619
Sheriff's Office	247-8200
Specialized Services	744-5671
Traffic Control	744-5670
Utilities	744-5600
Animal Control	744-5660
Code Enforcement	744-5568
Solid Waste	272-5680
State Road Dept.	744-6038
Engineering	307-1711

area maintenance need, call the Bloomingdale community office at 681-2051, or e-mail bloomingdale.homeowners@verizon.net for assistance. The office is staffed Monday through Thursday, 7

to 11 a.m. Residents are also invited to attend the homeowners' association open meetings, at the community office, 3509 Bell Shoals Rd., first Monday of each month, 7 p.m.

Financial Corp. Promises Great Rates, Service

A Gazette Report

Brandon residents Linda and Thomas Roe moved their five-year-old business this spring from their original Margaret Street location to a new 4,500 sq. ft. building at Bloomingdale Executive Park on Bloomingdale Avenue.

Thomas, former owner of Tree-mendous Lawn and Landscape in Brandon for over 15 years, and Linda, a mortgage broker with 19 years experience, say the philosophy of Roe Financial Corp. is simple.

"We're a no-surprise mortgage company," Thomas said.

Roe said the company's specialty, which accounts for 95% of its business, is helping prospective homebuyers looking for homes selling between \$80,000 and 140,000.

"A majority of our business, 92%, comes from referrals. We take a lot of pride in

educating our clients throughout the mortgage process, so that when we're at the closing table, there are no surprises."

The company also handles equity lines for debt consolidation, vacations and children's college education financing.

"Many people don't know that the interest on an equity line, as long as you don't exceed 100% of your home's value, can be totally tax deductible," Roe said.

"We don't claim to be the cheapest, but if you come to Roe Financial, we'll take care of you and make sure you understand the process."

Office hours are weekdays 8:30 a.m. to 5:30 p.m., after hours and weekend appointments are available. Information: 661-3477.

Want to see your Bloomingdale area business profile in the Gazette? E-mail frazier1@tampabay.rr.com or call Laura Frazier, 681-2051.

Some people may make you smile,



we'll make your smile special.

- Whitening
- Crowns & Bridges
- Dental Implants
- Non-Surgical Gum Treatment
- Most Procedures Completed In Office
- Insurance Filed For You
- VISA / MASTERCARD
- Extended Payment Plans Available

BRANT
Wade D.M.D.
Practicing Fine Cosmetic & Family Dentistry

CALL TODAY
662-9233
to schedule your consultation

1457 OAKFIELD DRIVE • BRANDON

Beautiful Yards

Landscape • Installation and clean up

Sod • Trim • Mulch • Plants • Pavers • Borders

813-643-7024
Cell 813-786-7391

260223

FREE APPRAISAL FEE!*

* LOANS OVER \$50,000

No Up Front Application or Qualifying Fees

- Purchases/Refinances
- One Day Out Bankruptcy
- Bill Consolidation
- Construction Loans
- Incorporated Owner/Bullder /Assets
- Bad Credit OK! (Strongly enforce privacy policy and security of your information!)
- First Time Homebuyer
- In Foreclosure Process
- No Verification of Income

CONFORMING RATES as low as 6.25% 30 yr. fixed NO POINTS

Current rates are LOW! Call Me Now!

Lisa Alberts
813-643-0458

Licensed Mortgage Broker Business Locally Operated



Creative Funding of Florida, Inc.

At Your Service Since 1983

Property Manager's Report

Bloomingtondale Speedway Claimed 3 "Victims" In June

Excerpts from the June 2002 Bloomingtondale Special Taxing District property manager's report, submitted by Al Devney, president of DPMI, Inc., are as follows. Information: 684-6617.

Irrigation

DPMI rewired the Garnet system timer, turned off the John Moore system to meet county watering restrictions, requested a variance to water on Saturdays for the Elton system, and added two heads

to the Glenhaven system.

During the monthly maintenance inspection, DPMI replaced 27 broken spray heads and one rotor, repaired four broken risers, and replaced 26 lights.

Landscaping

Planscape, Inc. installed palm trees on Erindale and Glenhaven. DPMI watered the new oaks on Greenhollow and Natures Way and the palm trees on Erindale and Glenhaven twice a week.

The county forester looked at the dead tree on Natures Way and Rivercrossing, and could not determine what killed the tree. In addition, he

looked at five trees on Culbreath that were showing dead branches in the tops of the trees.

Camarras Landscaping installed some burford holly and Indian hawthorne bushes at Elm Grove.

General Maintenance, Repairs

DPMI painted 30 feet of wall on Greenhollow and 88 feet of wall on Natures Way to cover graffiti.

Accident Damage

The Bloomingtondale Speedway (i.e. Natures Way) claimed three more "victims" this month - a car vs. TECO light pole at Erindale and Culbreath, car vs. wall on

Bell Shoals, and car vs. flagpole at Garnet and Bell Shoals.

The score - Bloomingtondale Speedway three, cars zero. The total is nine accidents this year.

Public works traffic operations dept. replaced damaged signs on Springvale and Culbreath.

Eat, Drink and Pitch Out The Window

Mr. Devney picked up 15 bags of trash, a trash receptacle, a tennis shoe, half of a bed frame, a traffic cone, a possum and .05 cents.

The beverages of choice were Coke for soft drinks, Ice House for beer and Makers Mart for distilled spirits.

Cut Out Cutting Through

You wouldn't want drivers cutting through your neighborhood to bypass traffic, so don't do it yourself. It is dangerous and totally disrespectful. These streets have been identified and residents are watching for offenders. Sheriff's deputies will be patrolling them. Now is the time to plan ahead and allow yourself extra time to get to and from work or school.

The Bloomingtondale Community Station is at 4342 Bell Shoals Road, near Beef O'Brady's restaurant in the Village Center Plaza. Station hours are Monday through Friday, 8 a.m. to 5 p.m. Information: 635-8040.

say and what you do. Set the right example. Also, please don't park on the grass. Violators in posted areas will be cited (\$30 fine).

Respect your crossing guards and Sheriff's deputies. They are protecting your children.

Speeders Be Warned

For those of you who speed in school zones, you just got the only warning you'll get. This is very serious business. There will be no more warnings. Young lives are at risk. You speed, you pay and you pay big! There will be special patrols watching for you. Speeding fines are doubled in school zones. Slow down - it's that simple.

Lane Closures

Residents traveling on Bell Shoals Rd. last month were temporarily inconvenienced with lane closures during the installation of a water line. Drivers traveling on Kings

Ave. will encounter continued lane closures throughout August while the road is being resurfaced. Be extra careful driving in these construction zones.

District Requests Tax Increase

The Bloomingtondale Special Taxing District board of trustees plans to present to residents this fall a request to increase homeowners' \$80 annual assessment fee to

\$100. Watch for details in the September issue of Gazette and on www.BloomingtondaleGazette.com. Information: 684-6667.

Yard of the Month



LAURA FRAZIER/Photo

The Hauser Residence
2323 Longmore Circle • Somerset

Bloomingtondale Yard Of The Month

Nominate your friends and neighbors (or yourself) for the Bloomingtondale Yard of the Month award.

Winners will receive a Bloomingtondale Square Wal-Mart gift certificate courtesy of the Bloomingtondale Homeowners Association.

Submit entries by mail to Yard, 3509 Bell Shoals Rd., Valrico, FL 33594, by fax to (813) 651-1129 or by E-mail to Letters@BloomingtondaleGazette.com.

Submit entries by mail to Yard, 3509 Bell Shoals Rd., Valrico, FL 33594, by fax to (813) 651-1129 or by E-mail to Letters@BloomingtondaleGazette.com.

Your name and phone # ...

Nominee's name, address, phone # ...

Outstanding yard features ...

CLASSIFIED

The Bloomingtondale Gazette classified office is located in the Brandon News building at 1401 Oakfield Dr., Brandon FL 33511

TO PLACE AN AD	RATES	GENERAL POLICIES:	AD DEADLINE
call: Ashley Hager or Ruby Brooker at: 689-7764 or fax to: 689-9545	SUPERSAVERS: Private parties may run a three line ad free of charge for merchandise under \$250 (price must appear in ad). Not available to businesses. Other restrictions apply. Free ads must be submitted in writing, by fax or in person. Five ads per person per month on a space available basis. RATES: Five lines for \$7, additional lines are \$1.40 per line. Ask about our discounted rate available if you advertise in the Brandon News, Plant City Courier and Shopper or other Sunbelt publications. HOURS: Mon. - Fri. 8 A.M. to 5 P.M.	CANCELLATIONS: Cancellation numbers are issued at the time of cancellation. It is necessary you have it in the event of any misunderstanding or adjustments. Ad deadlines are applicable to cancellations as well. ADJUSTMENTS: Please check your ad for errors the first day it appears. Sunbelt Newspapers will not be responsible for errors, except to the extent of the cost of the first insertion, and then only for that portion of the ad that may have omissions of copy. Corrections of errors must be made within the above ad deadlines also. CREDIT: Some classified categories require payment in advance.	to place cancel or change an ad is Friday, 5 P.M. 1 week prior to publication.

210 Houses Unfurnished BRANDON- Newer home, Immac cond, 3BR 2BA 2CG, Scrdn lanai, Fenced, Comm. pool, No smking/pets, \$1050/mth + sec dep. 813-833-8506.	425 Video Rec Equip VIDEO CAMERA, Hitachi VM-1900A, needs alignment, w/ charger, 3 batt's & carrying bag. \$150 all. 813-689-8478	629 Trucks - Light Duty Ford 2000 4X4 Super Cab XLT, diesel, 4spd automatic, all options, power everything, \$29,000. Call Kevin 813-654-1257
320 Medical MA, full time, front and back. Apply in person at 302 Bryan Rd. suite 1	560 Motor Homes - RV's 33' HOLIDAY Rambler Vacationer 1999, LR slide, Trekvision, fully loaded, 14K mi, like new! \$60K. 813-240-0188	635 Motorcycles SUZUKI 1999 JR50 good condition, yellow. Perfect for beginners \$750. 813-654-7301
360 Trades ERECTORS METAL BUILDING EXP 813-545-1711	562 Campers & Travel Trlrs 31' Airstream 1976 center bath, rear twin beds, cold ac, very good cond, can't travel must sell. \$5800. 813-657-7510.	649 Automobiles For Sale PONTIAC 1994 Grand AM GT, red, V6, auto, new motor, 4 door, Excellent Condition. \$3,295 OBO. 813-685-5966
410 Furniture SLEEPER, queen, Ethan Allan, peach: \$500. Secnal, Ethan Allan, purple: \$700. Chair & Ottoman, Ethan Allan: \$400. 813-684-5002	Turn to Classified to: BUY IT, SELL IT, FIND IT.	

You have **many ways to place your classified ad** in the **Bloomingtondale Gazette:**

- **by phone:** call Ruby at: 657-4517 OR Ashley at: 657-4518
- **by fax:** 689-9545, attention: Bloomingtondale Gazette
- **in person:** The Brandon News, 505 Robertson St.
- **by mail:** The Bloomingtondale Gazette, c/o the Brandon News, 505 Robertson St. Brandon, FL 33511

WELCOMES

Ray Chadderton **Pete Marion**
Realtor® Realtor®

Kevin Chadwick, Broker of Keller Williams Realty of Brandon, is pleased to announce that The Real Estate Team of Pete Marion and Ray Chadderton has recently joined the rapidly growing Keller Williams Market Center in Brandon.

"We are proud to welcome Pete and Ray, not only as accomplished, highly respected Realtors, but also as newly appointed Keller Williams board members and business partners. We expect this dynamic Team to play a key role in directing the growth of our Market Center."

Always top producers in the Brandon/East Hillsborough area, the Team produced sales of over three million dollars in May 2002. Pete and Ray attribute their success to their commitment to the highest level of service. Last year, Ray Chadderton received the C. Ed Owings Award for Outstanding Civic Achievement from the Greater Tampa Assoc. of Realtors.

Let this winning Team go to work for you in all your real estate needs! Pete Marion can be reached at 813-601-5028 and Ray Chadderton at 813-601-0597, or call our Market Center at 813-684-9500.

082823

Bloomingtondale Gets Five-Star Service



with

Luana
RUSSELL

Five-Star Service

Homes Recently Listed In Bloomingtondale

- 1212 Big Pine Dr. \$89,900
- 2604 Shilo Ct. \$114,900
- 2406 Kenwick Dr \$137,500
- 4209 Elba Pl. \$179,500
- 4527 River Overlook . \$229,900
- 2316 Eagle Bluff Dr . . \$250,000

Homes Recently Sold In Bloomingtondale

- 3903 Santee Way \$120,000
- 2304 Oakhurst Ct. . . . \$128,500
- 3611 Casaba Loop . . . \$139,900
- 4504 Portobello Cr. . . \$155,033
- 2602 Allwood Av. . . . \$194,950
- 3906 Buttonwood Ct. . \$199,138



KELLER WILLIAMS

REALTY

OF BRANDON

510 Vonderburg Dr, Suite 200, Brandon, FL 33511

684-9500 or 685-8545

Call Luana and discover the pleasure of five star service

0200000000