

Photo courtesy of Hillsborough County School District



In This Issue:

- Inside Connections, 4
- Take Pride, 6
- Community Council, 8
- Substation Notes, 10
- Property Manager's Report, 11
- Commissioner's Corner, 14
- Restaurant Review, 16
- Letters, 18
- What's Happening, 22

Featured Story:

County Asked To Increase Library Size

see page 5

Bloomingdale Spared In School Boundary Split

550 BUCKHORN STUDENTS REASSIGNED TO NEWSOME

By LAURA FRAZIER

Bloomingdale community parents and students breathed a collective sigh of relief on January 21, when the Hillsborough County School Board approved boundaries for Newsome High School, set

to open on FishHawk Boulevard this fall. As hundreds of Bloomingdale residents had hoped, campaigned and petitioned for, the board voted 6 - 1 to approve a plan that will not split Bloomingdale community students between two high schools. But the final decision also resulted in angry shouts and audible sobs from some of the 200 people who attended the meet-

See Newsome, Page 14

Bark If You'd Like A Dog Park, see page 17

FLAVORED CRUST Original PIZZA
Hungry Howie's Pizza & Subs
PIZZA • PASTA • SUBS
WINGS • SALADS
 SEE OUR SPECIALS ON PAGE 7

Finally, the lifestyle you so richly deserve.



You'll think you've stumbled into a storybook. Magnificent country manors. Oversized forested homesites. An exclusive village gated for privacy where Hannah Bartoletta invites you to create a masterpiece of your very own. Avocet, Brandon's only premier address. Isn't this the lifestyle you so richly deserve?



Avocet
Brandon's premier address.



Homes from the \$500's to over \$1,000,000 • (813) 909-1201 • www.hbh.info

District IV School Board Member Plans E-Mail Newsletter

By LAURA FRAZIER



Jennifer Faliero

Voters in the 2002 District IV School Board seat race between long-time Plant City educator Larry Martin and newcomer Jennifer Faliero communicated their overwhelming support of Faliero. The 39-year old PTA volunteer, a mother of two elementary school age children, received over 80% of the votes reported at precincts in key areas of her district in Bloomingdale, Buckhorn, Riverview and Plant City.

Now Faliero said she'd like to communicate her support of her District IV constituents.

A former public relations manager at St. Joseph's Hospital in Tampa, Faliero is finalizing plans for what she dubbed "an electronic communiqué tailored to District IV residents."

The e-newsletter, "IV The Record," will contain answers to commonly asked questions and will include updates about current events affecting schools and students in her district.

"The communiqué will not be editorial in nature," Faliero said.

"I want to communicate with my constituents on a regular basis to help them understand and navigate the system."

The District IV representative said she expects several recent and upcoming school issues to generate a lot of questions and requests for clarification from concerned parents. The electronic newsletter, she said, will be an effective tool for answer-

ing frequently asked questions and setting the record straight on perplexing district issues and policies.

"This form of communication should eliminate the need for someone to answer 100 different e-mails on the same subject, so it should help streamline the process and get the people the answers they want in a timely manner," she said.

Faliero said she intends to kick off her communiqué with plain-talk answers about how the school choice program and the boundary decision-making process work. The Newsome boundary plan approved by the School Board last month is expected to generate a great deal of special assignment requests from displaced students who wish to remain at their current high school (see related story in this issue).

Boundary issues are just one area Faliero said could benefit from more efficient

communication with her constituents.

"I intend to address any concern that's on the minds of my constituents and to set the record straight on any confusing issues that arise."

With better communication between the district and the public, and more coordination between school district and county departments, eventually, Faliero said, "Everyone's going to be singing from the same sheet of music."

The newsletter will automatically be sent to anyone who has communicated with the district by e-mail in the past year. The letter will include a removal option for those who do not wish to receive it. Residents who would like to receive the newsletter but have not communicated with the district by e-mail may e-mail their request to Jennifer.Faliero@SDHC.k12.fl.us or phone 272-4050.

Congratulations Tampa Bay Buccaneers!

2003 Super Bowl Champions

Bloomington Loves The Bucs!



Tom Hayden

Painting & Pressure Washing

Residential & Commercial **FREE Estimates**

654-1313

Fax 653-2491

Bonded-Licensed-Insured #PA 4506

Let Us Color Your World!

261478

Your Inside Connections

The Bloomingdale Homeowners Association, Inc.

3509 Bell Shoals Road, Valrico, FL 33594.
(813) 681-2051. Fax: (813) 651-1129

E-mail: Bloomingdale.Homeowners@Verizon.net

Web Site: www.BloomingdaleGazette.com

BHA meetings are at the community office on the 1st Monday of each month at 7 p.m.

- President** — Ted Grable
- Vice President** — Joe Hickle
- Treasurer** — Pam Liguori
- Director** — Tony Diolosa
- Director** — Steve Heckel
- Director** — Cheryl Kehrmeyer
- Director** — Michele Caballer

Bloomingdale Special Taxing District

3509 Bell Shoals Rd., Valrico, FL 33594
(813) 684-6667

BSTD meetings are held at the community office on the 2nd Monday of each month at 7 p.m.

- President** — Thom Snelling
- Vice President** — Russell Jones
- Treasurer** — Dale Kahn

- Recording Secretary** — Alice Burleson
- Correspondence Secretary** — David West
- Trustee** — Myron Magedanz
- Trustee** — Michael Buday
- Property Manager** — Al Devney

Bloomingdale Mobile Watch Coordinator/Equipment Manager —

Tony Diolosa, 681-1146
Treasurer — Paul

Kelmer, 681-9701
Patrol Member — Steven Heckel, 654-4266

Patrol Member — Brad Scharp, 643-5000
Patrol Member — Paul Warr, 685-7883



Wireless provider for Bloomingdale Mobile Watch

Bloomingdale Oaks Special Taxing District

P.O. Box 3132, Brandon, FL 33509-3132. (813) 685-2817

BOSTD meetings are held at 3419 Cade Lane on the 2nd Monday of each month at 7:30 p.m.

- President** — Bill Grace
- Treasurer** — Fred Englehart

THE BLOOMINGDALE GAZETTE

The official publication of the BHA since 1980
3509 Bell Shoals Rd.
Valrico, FL 33594
(813) 681-2051
Fax: (813) 651-1129

E-Mail: News@BloomingdaleGazette.com

- Executive Director** — Joe Liguori
- Editor** — Laura Frazier
- Photojournalist** — Mack Austin
- Correspondent** — Shannan D. Powell
- Correspondent** — Leslie White
- Restaurant Critic** — Elton Dumont
- Yard of the Month** — Karen Pearson

Published by Sunbelt Newspapers — 505 W. Robertson,
Brandon, FL 33511. (813) 657-4500

The Gazette is delivered free to Bloomingdale residents along with The Tampa Tribune on the first Saturday of each month.

Publisher — Carla Rockwell

Advertising Manager — Tami Donaldson; phone: 627-1322; e-mail: tdonaldson@tampatrib.com

County Asked To Increase New Library Size

By MACK AUSTIN

Before the construction equipment starts arriving and the building supplies begin to pile up; before the old pasture has pipes and concrete all over the place, a lot more planning has to be accomplished before it really looks like our community will actually see its new library next to Bloomingdale Senior High School.

In the meantime, the architects and county staff will meet with community representatives to insure the finished product is one we can all be very proud of.

The next workshop will take place this month at Brandon Regional Library.

At this workshop, representatives from various county departments, library services department, and residents from our community



MACK AUSTIN/Photo

will review updated plans, discuss suggestions and begin to finalize the design for the new library. One very important agenda item to be discussed is the proposal to increase the size of the library from 10,000 to 15,000 square feet. Both the South Brandon

will review updated plans, discuss suggestions and begin to finalize the design for the new library. One very important agenda item to be discussed is the proposal to increase the size of the library from 10,000 to 15,000 square feet. Both the South Brandon

will review updated plans, discuss suggestions and begin to finalize the design for the new library. One very important agenda item to be discussed is the proposal to increase the size of the library from 10,000 to 15,000 square feet. Both the South Brandon

Library and its "sister" Upper Tampa Bay Library are currently planned for 10,000 square feet.

Unfortunately, after taking space for restrooms, storage, administration and hallways, only about 5,000 sq. ft. remain for reading rooms, childrens' rooms and the stacks.

Community leaders in both areas feel that customer demand will overwhelm such small facilities, and have asked the county to find a way to increase the libraries' size.

Original plans called for 25,000 sq foot facilities, but were pared back by the county when funding fell short.

Library updates, including the official naming of the facility, will be announced in the Gazette and on www.BloomingdaleGazette.com.

SAY YOU SAW IT IN THE BLOOMINGDALE GAZETTE



First United Methodist

Brandon

WE'RE SAVING A PLACE FOR YOU...

No matter what your age is, no matter where you come from, no matter who you are, there is a place for you at Brandon First. You'll meet a great mix of friendly people, hear relevant messages, enjoy compelling programs, and much more. Come as you are, be who you are — we've got a place for you.

VISIT US THIS SUNDAY!

- 8:00 a.m. Traditional Worship**
- 9:30 a.m. Contemporary Praise**
- 11:00 a.m. Traditional worship with Choir & Orchestra**

689-4161

120 North Knights Avenue
Brandon, FL 33510
www.fumcbrandon.org

	I-4		
I-75	S.R. 60	Knights	Parsons
	Bloomingdale		

Help Your Neighborhood Take Pride In 2003

**CLEAN UP DAY
PLANNED FOR MARCH**

By CHERYL KEHRMEYER
BHA Director

The timelines have been set and we're ready to make Bloomingdale shine! Thank you to our Bloomingdale neighborhood leaders who enthusiastically came forward as PRIDE Neighborhood Team Captains. They'll begin making changes for the better in their respective neighborhoods through the BHA PRIDE Program, i.e. People of Bloomingdale Revitalizing, Improving, Developing and Enjoying our great community. It's the BHA's goal to have the PRIDE program in every one of Bloomingdale's 36 sections by year-end.

Seven different neighborhoods have been scheduled for a Clean-up Day on a Saturday in March, based on neighborhood interest and



PRIDE - People Revitalizing, Improving, Developing and Enjoying Bloomingdale

volunteer participation. The exact date will be determined and announced this month. East of Bell Shoals Road, CHADDS FORD, OAK CREST AND WINDSOR WOODS have been selected.

West of Bell Shoals, selected sections include those identified as C1 AND C2, H1 AND H3, H2 AND H4, AND BLOOMINGDALE

ESTATES. If you're not sure about the name of your section, the street names in every section are available at the BHA office and at www.bloomingtongazette.com.

In addition, announcement letters will be mailed to those neighborhoods in February. If we have interested volunteers from another area, we can add one more - call the BHA office at 681-2051 today!

The announcement letters sent to selected neighborhoods this month will include the street names in each section, what items can be dis-

posed of on clean-up day, and the details of the program, including neighborhood training session dates.

At these valuable sessions, we will provide each Neighborhood Team Captain with a PRIDE Resource Manual that includes tips and ideas on forming a team, organizing volunteers, running a neighborhood clean-up day, and getting helping hands from the community (Boy Scouts, church youth groups, high school service groups, etc.).

In March the Clean-up Day will occur! We'll have large disposal bins at various locations and community festivities, too. Each individual Neighborhood PRIDE Team may decide on additional activities as well, such as a big end of Clean-up Day neighborhood barbecue. What a great way to celebrate a rewarding day of improving our homes, yards and streets.

It's never too early to get your neighborhood signed up for next quarter's Clean-up Day and training. Please call the BHA office at 681-2051, or send e-mails to Bloomington.Homeowners@Verizon.net. We look forward to hearing from you!

Kitchen Solvers®

Complete Kitchen Remodeling Services!

The Choice is Yours...

- *Custom Cabinet Refacing
- *Elegant Custom Cabinetry
- *Solid Surface Countertops by Montelli & Corian
- *Kitchen Design & Planning
- *Kitchen Accessories

Kitchen Remodeling Specialists Since 1982!



Ranked by Success Magazine as America's #1 Kitchen Renovation Company!

Locally Owned & Operated
Complimentary In-Home Estimates
(813) 681-1416
Call Today!

Materials & Installations Completely Guaranteed
Licensed-Bonded-Insured

February PRIDE Good Neighbor Tip

When out walking Rover, please abide by County Animal Ordinance and pick up after him (plastic grocery bags are perfect)! This keeps Bloomingdale's grass and sidewalks clean - not to mention your shoes and bike tires - and also keeps owners from paying up to \$100 in fines.

SAY YOU SAW IT IN THE
THE BLOOMINGDALE GAZETTE



Undecided as to what to get your special valentine?

Pamper them with a day at the newest, hottest salon in town.

Massage Packages, Men's Sports Packages, Spa Facials, Spa Pedicures, Spa Manicures, Hair, Make-up & Lots More Available!

GET YOUR VALENTINE BEFORE IT'S TOO LATE!

2222 Lithia Center Lane • Valrico, Florida 33594 • 813-571-2212
GIFT CERTIFICATES AVAILABLE

TRIPLE TOPPER

Large Pizza with up to 3-Toppings

\$6.95

Must present coupon



FREE Flavored Crust: Original • Butter • Buttercheese • Garlic • Poppy Seed • Sesame • Rye • Cajun

BLOOMINGDALE
819 W. Bloomingdale Avenue
at Kings

684-0988
Lunch Sat. & Sun.



WE DELIVER



Triple Topper

Large Pizza with up to 3-Toppings

\$6.95

Delivery extra. Expires 2/28/03. Not valid with other coupons (MM 2) at participating stores.

HOWIE'S SWEET DEAL

Two Medium 1-Topping Pizza plus FREE Cinna-MMM Bread

\$10.99

Delivery extra. Expires 2/28/03. Not valid with other coupons (MM 2) at participating stores.

WACKY WEDNESDAY

One Large Cheese Pizza Carry-Out Special

\$3.99

Additional Toppings Available

Carry-out only. Expires 2/28/03. Not valid with other coupons (MM 2) at participating stores.

Community Council Update

A Bloomingdale Area Community Council Report

Bloomingdale Area Community Council, or BACC, volunteers meet monthly with local law enforcement and county departments to research and resolve neighborhood issues and concerns. Meetings are held at 7 p.m. on the third Thursday of each month at the community station. For information, call Bloomingdale Community Resource Deputy Pete Maurer or Community Service Officer Sandy Capitano at 635-8040.

The council addressed the following items at the BACC's January 2003 meeting:

Vandalism

Deputy Maurer noted several community entrance areas that serve as school bus stops had been vandalized.



Bloomingdale residents have closely been following decisions made concerning the boundaries for the new high school located off Fish Hawk Blvd.

Lights were broken and plants were destroyed. Residents living near or using all entrance areas are asked to keep a close watch, especially during the morning and afternoons.

A reward of \$500 is being offered for information on any vandalism that occurs in the Bloomingdale area.

New High School

The new Newsome High School in Lithia has been the subject of much attention by Bloomingdale residents.

Articles in this and earlier editions of the Gazette have covered the determination of school boundaries. The name of the new high school is

going to be Newsome, much to the dissatisfaction of many residents who wanted a name related to the area. Residents were not involved in the selection of the school's name. Traffic will be a subject of special concern once the school opens. A new traffic

See Council, Page 9

County Backpedals On Backflow Ordinance

A BHA Report

The Hillsborough County Board of Commissioners approved in January an amendment to the county's Backflow Prevention Ordinance. The ordinance, which in the past had been interpreted to require all homeowners and businesses on land abutting any body of surface water (ponds, lakes, canals, drainage ditches, etc.) to install expensive backflow prevention equipment, is now defined as applicable only to those homeowners and residents who employ auxiliary systems to pump water from ponds, wells, etc.

Bloomingdale Homeowners Association, Inc. Board of Directors chair Steve Heckel attended the meeting.

"This (amendment) is exactly what the BHA asked the county to do," Heckel said.

Heckel praised District IV

County Commissioner Ronda Storms for her assistance in seeking a reasonable interpretation of the ordinance.

"Commissioner Storms was emphatic about how the ordinance would now be enforced," he said.

Heckel asked the board to consider providing refunds to ten Bloomingdale residents who were given an ultimatum last year to either install the \$500 device or have their household water supply turned off.

Water Department Director Mike McWeeney told commissioners the ten residents were not pumping water from bodies of water adjacent to their home sites.

"The commissioners were speechless and did not even address the issue," Heckel said, adding that the homeowners association board would discuss the refund request at a future meeting.



Several months have passed since council members were told a traffic light would be installed at the east entrance to Bloomingdale High as soon as a technical issue was solved by TECO. The traffic is very congested, so please slow down until the signal is installed.

Council

From page 8

signal is being installed. However, high school drivers mixing with heavy truck traffic could present some serious dangers.

Dog Park

Plans are still in the process stage for construction of a Dog Park behind the Parks Maintenance Unit II operations area on Natures Way.

Details such as access are still being researched (see story in this issue).

Bloomingdale Ave., John Moore Rd. Construction

This issue has been covered in detail by the Gazette. Many members and their neighborhoods will be directly impacted by the final decisions.

New situations have risen concerning who will build what at the intersection of Bloomingdale Avenue and John More Road.

In recent months, the Board of County Commissioners denied a request for commercial construction at the corner, and continued to prill a request to build 125 single-family homes just south of the corner.

Traffic on Bloomingdale

Avenue and compatibility of the new construction with existing neighborhoods were cited as reasons for denying the requests.

Consideration is also being given to the impact of construction taking place on south John Moore Road.

BACC member Gary Lohanboeke is active in following closely the requests for rezoning and construction in this area.

3-Way Stop Needed

Speeding drivers are creating a serious problem at the intersection of Culbreath Road and Natures Way near Cimino Elementary School.

Coordination is continuing with county traffic engineers to study the possible installation of a 3-way stop.

Left Turn Arrow Needed

There is still no left turn arrow for drivers turning left onto Bloomingdale Avenue.

Engineers will first test the changing of the timing.

Traffic Calming

Traffic calming measures are needed in the Fox Run area where speeding drivers continue to be a serious problem.

Bloomingdale Florist Ready For Valentine's Day ORDER EARLY!

By LESLIE WHITE Correspondent

Bloomingdale Florist is a full service florist, and it shows the minute you walk in the door. Mother and daughter owners Marilyn and Karen Schotanes have created a feast for the senses at the Bloomingdale Square shop.

Amidst sounds of a bubbling fountain and music fit for a spa, there are shelves lined with lush green plants and coolers filled with a variety of fresh flowers to suit every taste.

Even the ceiling is adorned with neatly bundled bouquets of dried flowers.

The selection of gifts to choose from is suitable for any price range.

They create gourmet gift baskets, balloons, fruit baskets, custom silks, and home décor as well as arrangements for weddings and funerals.

Their floral designs have won multiple national and local awards in the four years they've been in existence.

They pride themselves on their vast selection of quality flowers, their innovative designs, but most importantly their impeccable customer service.

Marilyn and Karen say they take the time to get to know customer preferences,

and regulars can count on the same quality and design that brought them back. If anything doesn't suit the customer, they fix it. If they don't have the specific flower the customer wants, they order it. If a customer buys from them, they educate them on how to maximize the beauty and longevity.

And they really throw in their "two cents," literally. As I purchased a bunch of tulips, the Schotanes' advised me to put two pennies, and nothing else, in the bottom of my vase to keep the stems strong, and to leave them out if I was going for the droopy look. And, four days later, they're still standing proud.

With Valentine's Day quickly approaching, Marilyn and Karen offered this tip: know what you want, and order early.

This is their biggest one-day holiday, and they're prepared to meet the needs of the area.

With four designers on hand, they've also hired ten new drivers, in addition to their addition two on staff.

They said this will assure that your Valentine's order arrives where you want it, when you want it. And, for those that can't quite remember to take care of that early-don't worry.

See Florist, Page 13

We have plenty of ways...



...to put a smile on your face.

- Whitening
- Crowns & Bridges
- Dental Implants
- Non-Surgical Gum Treatment
- Most Procedures Completed In Office
- Insurance Filed For You
- VISA / MASTERCARD
- Extended Payment Plans Available

BRANT
Wade D.M.D.
Practicing Fine Cosmetic & Family Dentistry

CALL TODAY
662-9233
to schedule your consultation

1457 OAKFIELD DRIVE • BRANDON
www.drbrantwade.com

278170

Florals

BY NATALIE

Custom Silk & Dried Arrangements
A Great Gift For Any Occasion...

Especially
Valentine's Day, Feb. 14th!!

Please visit our display at
Lavender in the Regency Square Mall
W. Brandon Blvd.
(between Staples & Marshalls)

or contact Tim or Natalie At 813-661-1410
Visit Us Online At www.Florals-By-Natalie.Com

Bloomingtondale Substation Notes

By DEPUTY PETE MAURER
AND OFFICER SANDY
CAPITANO

The Bloomingtondale Community Substation, at 4342 Bell Shoals Road, near Beef O'Brady's restaurant in the Village Center Plaza, is open 8 a.m. to 5 p.m. weekdays. Information: 635-8040. For immediate assistance, call the Sheriff's Dept. at 247-8200 or 911 for emergencies.

Alafia Traffic Flow, Parking

New traffic flow patterns have helped smooth out most of the traffic congestion around Alafia Elementary School. Some parents are still not familiar with the patterns.

Basically, all traffic must enter only at the left gate, circle around the pattern flow and exit at the same gate.

No vehicle is allowed to enter at the gate located nearest to the intersection of



New traffic patterns have improved traffic flow around Alafia Elementary School. Changes to improve the parking situation are being studied.

Natures Way and Culbreath Road. As always, being patient and courteous makes this difficult task much easier for everyone involved.

The number one priority is protecting the school children. Allow yourselves plenty

of time. In addition, please remember that there have been no changes to rules concerning parking. Illegal parking presents dangers to adults and children.

Drivers will be given citations.

Vandalism

As much as we don't want to believe it, there are those in our community with no regard for the property of others. They are people with

See Substation, Page 15

Bloomingtondale Property Manager's Report

By AL DEVNEY

Al Devney, Bloomingtondale Property Manager and president of Devney Property Management, Inc., can be reached at 684-6667.

Excerpts of the Property Manager's report for the month of December 2002 are as follows.

Irrigation

Thunder Irrigation repaired leaking main lines on the Culbreath and Erindale systems and four broken zone lines at Fortuna and Canoga Park.

Landscaping

Planscape, Inc. installed the shrubbery and flowers at the corner of Greenhollow and Natures Way.

Repair and Replace

DPMI installed the Christmas bows and lights and the community entrances, picked up the trash from a trash cart and returned the cart to the owner, covered the graffiti on four sections of wall on Springvale, and hosted the pre-bid conference of this year's painting contract, and replaced 22 light bulbs.

Handy Hands repaired the broken fence on Natures Way and Dunaire. TECO replaced the damaged light pole at Fortuna and Canoga Park. ZK Construction repaired the damaged wall on Glenhaven and the brickwork at Cambridge Cove.

Specialty Pressure Cleaning cleaned the sidewalks on Natures Way from Callista to Glenhaven on the west side of

the road. Hillsborough County removed two dead Oak trees on Bell Shoals and Garnet. Russell Electric repaired an electrical problem with the lights at the Kiowa entrance and added two receptacles for Christmas lighting at the Garnet entrance.

The county sidewalk program on Canoga Park plodded along.

Accident Report

There were four accidents in December; car vs. flowerbed and vehicle vs. lawn at Greenhollow and Natures Way, vehicle vs. bushes at Glenhaven and Natures Way, and car vs. wall on Glenhaven. This brings the total accidents for 2002 to 18.

Vandalism

There were six Christmas bows and eight red petunias stolen this season.

A \$500 reward is offered for information leading to the arrest of those responsible for vandalizing Bloomingtondale community property.

Eat, Drink and Pitch Out the Window

Mr. Devney picked up 20 bags of trash, an umbrella, a 3/4 ton tire with rim, a traffic cone, two hubcaps, two wash cloths, a semi-truck mud flap, three towels, two shirts, a Tupperware basket, a cell phone and 71 cents.

The beverages of choice were Mountain Dew for soft drinks, Natural Light for beer and Old Forester for distilled spirits.

SAY YOU SAW IT IN
THE BLOOMINGDALE GAZETTE



A SYLVAN Moment

The **moment** she showed you her report card before you even asked.



Learning feels good.

684-2400

354 E. Bloomingtondale, Brandon
(in the Bloomingtondale Executive Park)

www.educate.com

End report card anxiety. If you and your child dread report card day — you feel frustrated and your child is embarrassed to show it to you — call Sylvan now.

We start with the Sylvan Advantage,™ a proven process that works:

- We identify your child's specific needs.
- Followed by individual attention and personalized lesson plans from highly trained and certified teachers.
- And progress reports for you every step of the way

If your child is struggling or not being challenged enough, call Sylvan today.

Academic Tutoring



1st two hours
FREE!*

*New registrations; limited time slots. Ad must accompany registration

BRANDON SWIM & TENNIS
Club
Much More Than Our Name

689-0908

405 Beverly Blvd. Brandon, FL 33511

www.mybstc.com

274104

BG



MACK AUSTIN/PHOTO

School bus stop areas near entrances to many neighborhoods were recently vandalized. There are no excuses for this type of behavior. When found, parents will be held accountable. A \$500 reward is being offered for information leading to finding the vandals.

Japanese Students Played, Stayed In Bloomingdale

**CONCERT, BEHAVIOR
DELIGHTS FAMILIES**

By LAURA FRAZIER

About 120 music students traveled in January from Inagakuen Sogo High School near Tokyo to play and stay with Bloomingdale Senior High School band students.

The Japanese Wind Ensemble students stayed with about 45 music students' families for two days and performed at Bloomingdale on January 11.

Bloomingdale music student Phillip Colesanti's family hosted two female students, Yuki Naito and Miho Shibuya.

Phillip's mother Michelle Colesanti said although the students spoke very little English, it was fun trying to communicate with them.

"They would always nod their head in agreement whether or not they understood you, just to be polite," Colesanti said, adding, "I did notice that their eyes would light up and they would agree more vigorously when they really understood something that was said."

When Colesanti asked the girls if they wanted to go shopping, for instance, she said they plainly understood.

"They understood that phrase very clearly and nodded vigorously saying, 'Yes shopping!' So I asked what they wanted to shop for, and Yuki enthusiastically replied, 'American junk food!'"

Bloomingdale Band director Ted Hope said prior to the student's arrival, he asked their trip coordinators if the students had any special sightseeing requests.

"Their number one request was to go shopping at Wal-Mart," Hope announced to the amusement of Bloomingdale students.

Colesanti said the group's performance at the school was "phenomenal." She added that hosting the stu-



Suitcases in hand, Japanese music students Yuki Naito and Miho Shibuya met their host Phillip Colesanti, center, at Bloomingdale High on January 9.

ents was a thoroughly enjoyable experience for the whole family.

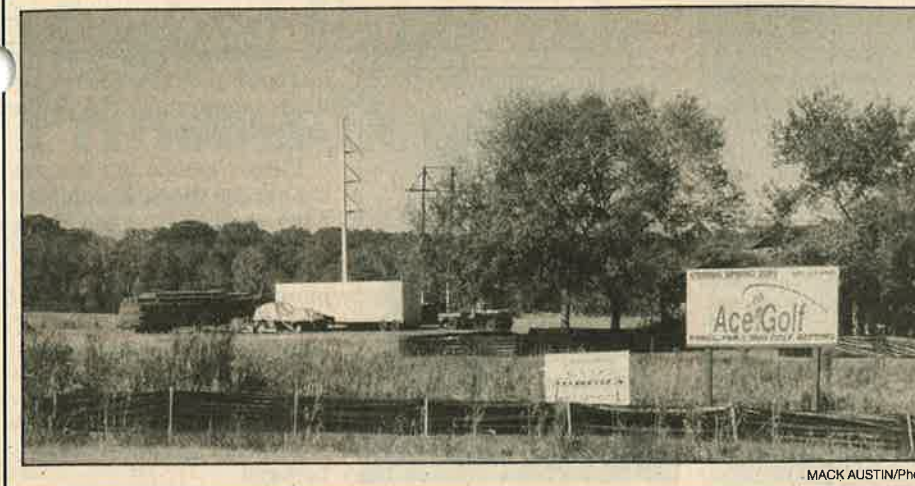
"Both girls were so cute, and all the students were very polite," Colesanti said.

"We learned a bit about the Japanese culture, especially how polite they are, and some of their ways. But we also realized that they were teenagers, and all that we heard about watching what we fed them didn't hold true. They loved pizza, brownies, and everything we gave them."

"I'd do it again in a heartbeat."



The Colesanti's took their guests to what coordinators said was the most requested "sightseeing" destination - Bloomingdale Square Wal-Mart.



MACK AUSTIN/Photo

New Golf Range, Batting Cages Open Soon

In case you missed it or haven't driven out on Boyette Road in a while, a new Ace Golf Range with batting cages is under construction at 12910 Boyette Road. It is scheduled to open this spring. Operating hours will be from 9 a.m. to 10 p.m. seven days a week.

Hillsborough County Frequently Called Numbers

Mosquito Control	554-5025	Traffic Control	744-5670
Poison Control	653-4444	Utilities	744-5600
Roadway Maintenance	671-7619	Animal Control	744-5660
Sheriff's Department	247-8200	Code Enforcement	744-5568
Specialized Services	744-5671	Solid Waste	272-5680
		State Road Department	744-6038
		Engineering	307-1711

Florist

From page 9

The Schotanes' anticipate the Valentine's forgetfulness, and have ordered enough to accommodate breathless, panicking walk-ins.

Bloomingdale Florist is located in Bloomingdale Square Shopping Center, around the corner from Publix.

Their hours are weekdays from 9:00 a.m. to 6:00 p.m. and Saturdays from 9:00 a.m. to 3:00 p.m.

Their phone number is 654-7304, and they even have a customer-friendly website to make ordering flowers even simpler - www.bloomingleflowers.com.



Majik Touch Cleaners

"EXPERIENCE THE DIFFERENCE"

- **Bloomington** 3513 Bell Shoals Rd, 654-9292
- **Bloomington** 4344 Bell Shoals, 689-9176
- **Bloomington** 815 E. Bloomington, 681-8700
- **Bloomington** 3248 Lithia-Pinecrest, 654-8113
- **Brandon** 717 W. Lumsden, 654-9541
- **Brandon** 913 W. Brandon Blvd, 684-4499
- **Brandon** 11393 Causeway Blvd, 643-6944
- **N. Brandon** 213 Kingsway Ave, 653-4535

- **Lithia** 16739 FishHawk Blvd, 654-7991
- **Plant City** 2621 Thonotosassa Rd, 752-6631
- **Providence** 1983 Lumsden Rd, 654-4423
- **Riverview** 11697 Boyette Rd, 672-1832
- **Seffner** 1515 S. Parson Ave., 684-5897
- **Valrico** 1985 E. Brandon Blvd, 654-2324
- **Valrico** 2511 SR 60 E, 643-4825
- **Apollo Beach** 220 Apollo Beach Blvd, 645-1499

\$110 EACH

SHIRTS LAUNDERED

Valid on Incoming Orders Only - With \$5.00 Minimum Dry Cleaning Order, No exceptions, Limit 10. Blouses, Polo & Boxed Shirts extra
COUPON EXPIRES 3/1/03

\$500 OFF

ANY DRYCLEANING ORDER OVER \$25

Valid on Incoming Orders Only - No exceptions. Valid only w/ coupon, not valid w/ other coupons
COUPON EXPIRES 3/1/03

\$300 OFF

ANY DRYCLEANING ORDER OVER \$15

Valid on Incoming Orders Only - No exceptions. Valid only w/ coupon, not valid w/ other coupons
COUPON EXPIRES 3/1/03

20% OFF

WEDDING GOWN, DRAPERY CLEANING, BEDSPREADS, COMFORTERS, BLANKETS, ALTERATIONS

Valid on Incoming Orders Only - No exceptions. Valid only w/ coupon, not valid w/ other coupons
COUPON EXPIRES 3/1/03

Commissioner's Corner

Beautification Projects Reap Many Rewards

By COUNTY COMMISSIONER RONDA STORMS

I miss the wild flowers flinging themselves all over our neighborhood medians every spring, don't you? Thinking about them reminds me of all the beautification projects we have in our communities. Clean, beautiful communities do more than please our eyes and our hearts. Did you know that they also help reduce crime?

It's the semi-famous bro-

ken window theory - psychologists studied the impact of a single broken window on the increase in crime in neighborhoods, and they found that if a window was broken in a building and not fixed shortly thereafter, a host of undesirable events occurred: littering, dumping, petty thefts and property crimes increased.

In fact, former New York City Mayor Rudolf Guiliani used the principle as a cornerstone for his successful efforts to clean up and reinvigorate Times Square.

Apparently, those types of small details unintentionally send a message that crime



Ronda Storms

and littering is tolerable to the neighborhood and there-fore encourages it.

That's why I appreciate the

leadership of the Bloomingtondale community in your clean-up efforts.

Please accept my sincere thanks to those of you who have unofficially adopted the irrigated medians along Bloomingdale Avenue by planting extra flowers (if you're interested in officially adopting them, let me know - they're irrigated) and to those of you who have spent your free time picking up garbage and sprucing up your neighborhood.

By investing that time you help knit your community a little more tightly together, and that, as they say, is a good thing.

Newsome

From page 1

ing.

The board approved a plan recommended in January by School Superintendent Earl Lennard and district staff. Two other boundary proposals under consideration would have split students living in the Bloomingdale community between Newsome and Bloomingdale High.

Under the approved plan, all students residing in the Alafia and Cimino elementary school areas will continue to attend Bloomingdale Senior High School. Those areas include the entire Bloomingdale community both east and west of Bell Shoals Road, and students from nearby neighborhoods along Bell Shoals Road and John Moore Road, between Bloomingdale Avenue and the Alafia River.

Despite vigorous protests by parents and students, about 830 Durant students, those living primarily in the RiverHills, Lithia Ridge and Twin Lakes subdivisions, will be reassigned to Newsome. In addition, about 550 students living in the Buckhorn community east of Lithia-Pinecrest Road will be shifted to Durant High School, bringing Bloomingdale's enrollment numbers down to capacity.

Newsome was built in

"One thing I was not comfortable with was that we had to split the population of the Boyette Springs area."

JENNIFER FALIERO
School Board Member

response to continued growth in the area that has resulted in critical overcrowding at Riverview and Bloomingdale high schools. Since boundary discussions began last fall, it was a known fact that large numbers of students from both high schools would need to move to Newsome.

But the vast majority of comments received by the district via e-mail and at public meetings indicated that very few parents and students were willing to make a move. All along, district staff and school board members said they knew they had a tough decision to make.

School Board member Jennifer Faliero, whose district covers much of the affected area, said determining boundaries for Newsome High was a wrenching experience, and one of the hardest things she's ever had to do.

"One thing I was not comfortable with was that we had to split the population of the Boyette Springs area. Only about 75 children (living east of Bell Creek) will move to

Newsome, and the rest will stay at Riverview High. It really broke my heart that we couldn't leave them all together," Faliero said.

The only board member who declined to approve district's recommended boundary proposal, Faliero said she supported the plan but wanted a special amendment attached to it.

"I voted against the plan because I felt strongly that a special amendment should be added to allow this year's ninth and tenth grade students at Bloomingdale, Durant and Riverview High to continue attending their current school."

Faliero made a motion to attach the choice amendment to the plan. Board member Candy Olson seconded the motion, but on a vote, the board rejected the motion 6-1.

"I think we did the students a disservice by not formally giving them a right to that choice," she said.

In accordance with district policies, special assignment

requests for schools at or above 100% capacity are routinely denied, Faliero said. But as a concession, Dr. Lennard told the public he would authorize special assignment staff to "use latitude" in working with students affected by the Newsome boundary split.

Tempering the adulation of Bloomingdale parents and students over last week's decision was the fact that many of their friends in nearby Buckhorn, RiverHills, Twin Lakes and Boyette Springs will have some major adjustments to make as they reluctantly transfer to new high schools this fall.

"I think the board was put between a rock and a hard place with this decision," said Bloomingdale resident Christy Jeup.

"But in the end, I believe they made the only decision that accounts for future growth."

Ted Grable, president of The Bloomingdale Homeowners Association, Inc., said the organization was happy with the board's decision.

"The BHA is very pleased that the District's new high school boundaries keep the Bloomingdale community together at one high school," Grable said.

Magical Fairy Tale Princess For Hire

BLOOMINGDALE MOM LAUNCHES PARTY BUSINESS

By LAURA FRAZIER

Most days, Bloomingdale mom Christina Kuhn can be found busying herself around the family's Sweetleaf Drive home, shuffling about in comfortable sweats and sneakers as she runs her household and cares for her two young children.

Kuhn said she treasures the opportunity to be an at-home mom, occasional drudgery and all. But lately she's been daydreaming about how wonderful it would be to become a glamorous, pampered princess - on an occasional basis, that is.

Kuhn, a former nanny and day care worker now raising with her husband Michael

two daughters age six months and three years, is well versed in magical tales about fairytale princesses and their princes charming.

Kuhn's three-year-old daughter Kaitlyn and her friends are mesmerized by fairy tale princesses, she said. They watch Disney videos, enjoy having stories read to them, and emulate feminine royalty in their play. In planning for Kaitlyn's recent birthday party, Kuhn said her daughter had one exceptional request - to have the legendary Snow White as her special guest.

A local party company provided an actor dressed as Snow White to appear at Kaitlyn's party. The children had a wonderful time, Kuhn said, but she thought Snow's persona and game plan were

See Princess, Page 17



LAURA FRAZIER/Photo

Bloomingtondale mom Christina Kuhn portrays the legendary Cinderella at children's birthday parties.

Substation

From page 10

serious problems, and they will pay serious consequences for their actions. Recently our Parks Maintenance Unit on Natures Way had several vehicles vandalized, and several school bus stop areas in Bloomingdale were also vandalized. Residents who live near school bus stops are asked to keep a close watch out for kids being rough. A reward of \$500 will be paid to anyone reporting those vandalizing community property.

Sheriff's Dept. Programs

The Hillsborough County Sheriff's Office has several special programs that offer community residents opportunities to get directly involved with and learn more about the many missions of the Sheriff's Office. These include the Sheriff's Citizen's Academy, the Sheriff's Reserve II program, the Business Watch program, the Church Watch Program, and the Neighborhood Watch Pro-

gram. Many of these programs are proving to be very valuable during this period when the Sheriff's Office will be experiencing staffing shortages due to deputies being called to active duty or retiring. All of these programs are very rewarding to the participants. More detailed information on all of these programs will be covered in future articles in the Gazette. For more information call the Bloomingdale substation at 635-8040.

Red Light Runners, Speeders

For those drivers who chose to run red lights, speed or drive aggressively - watch out! The Sheriff's Office has set up special patrols to find you and fine you. This type of driving is dangerous to everyone and will not be tolerated. No warnings will be given, just very large fines. Speeding fines are doubled in school zones. This is very serious business. Young lives are at risk. Slow down.

WHEN CAN YOU Retire?

If you don't know the answer to this question, we can help. Join us as our panel of retirement-planning specialists offer insight on how to select your retirement age and what steps may be needed to get you there on time.

We'll also discuss:

- How to know if your IRAs need an overhaul
- If you qualify for tax-free retirement income
- How several new laws might help your retirement

This one-hour program is free, but seating is limited. To reserve your seat or for more information, please call or stop by today. If you are unable to attend, please contact our office for other viewing options.

Tuesday, Feb. 11, 2003

11:30am/6:30pm/8:30pm



Dan Sammons, CLU

(Next to "Carwash on the Greens")
3616 Erindale Drive
Serving Brandon,
Bloomingdale & Valrico
Bus: 813-681-1462
www.edwardjones.com

Edward Jones

Serving Individual Investors Since 1871



Bloomington's Favorite Pastime

The 2003 Little League season has started at Bloomington Little League. There's a cool breeze in the evening, the smell of food cooking in the concession stand and lots of yelling - so get out and enjoy it! For more info call 684-8422 or www.bll-homeplate.org.

MACK AUSTIN/Photo

Restaurant Review

Elton: Attractive LaTaberna Off To Good Start

By ELTON DUMONT
Exclusive to The
Bloomington Gazette

We watched for months the renovation of the building on Brandon Boulevard that most recently housed Bedrock's restaurant and has now been transformed into a very attractive building that is home to Brandon's newest dining establishment.

Our party of four had reservations on the first Saturday night LaTaberna opened at 509 E. Brandon Boulevard.

Visiting new restaurants within the first week of their opening normally goes against one of my cardinal rules, but it looked so inviting.

The inside, like the exterior, features an attractive Spanish Mediterranean motif, nicely appointed with one main dining room, three

smaller dining rooms and a dining area off the bar.

We were seated on time and our table, in one of the smaller rooms, was cozy.

Our server greeted us fairly promptly, took our drink order, brought us a warm miniature loaf of bread, and proceeded to prepare a pesto based dipping sauce at our table. The Sangria, which I suggest you try, is made with your choice of red or white wine or champagne.

The menu offered a variety of "tapas" or appetizers including Mushrooms al Jerez (\$4.95) and Chorizo a la Plancha (\$4.50). Soups offered include Black Bean and Gazpacho among others.

The entrees were listed by category; Chicken, Rice and Pasta, Seafood and Meats.

The salad, very basic but very good, is included and is

tossed and served at your table. They offer only house vinaigrette with an imported Spanish cheese.

The wait for our entrees was definitely too long. Two of us ordered Grouper for our entrees, a generous portion which unfortunately was a tad dry and bland.

The Spanish chips were excellent, but we thought the yellow rice had a supermarket taste and quality - but you be the judge.

The Filet Mignon had to be sent back to the kitchen because it was not prepared according to order, but you do overlook certain things on the fourth day a restaurant is open.

When returned, it was seasoned and tender. The Red Snapper was the best of our four entrees; creamy, tasty and baked just right.

We ordered the Plan for

dessert and it was good.

The service at LaTaberna does need to be tuned up a notch.

We didn't expect a restaurant of this caliber to "auction" the food off - i.e. "Okay, who gets the fish, who gets the steak...." In addition, we were mildly surprised that none of the management appeared interested enough to check in our dining room about food or service - very surprising in a new restaurant.

LaTaberna has a children's menu, and is open for lunch and dinner. It is closed on Mondays. Our bill for two including soft drink, coffee, dessert, tax and tip was \$46.

Rating Based on 5 Stars

Food	★★★★
Service	★★★★
Ambience	★★★★
Overall	★★★★

Bark If You'd Like A Dog Park!

VOLUNTEERS, IDEAS NEEDED

A BHA Report

The Bloomington Homeowners Association, Inc., in conjunction with the Bloomington Area Community Council, is sponsoring the creation of a pet-friendly Dog Park within our community.

A significant parcel of land is available adjacent to the County maintenance unit on Natures Way, just south of Alafia Elementary School. The Park Authority has expressed support for this project.

Ideas for the Dog Park include sectional fencing to keep different size dogs apart, leash areas, free run areas, pooper-scoopers, baggies, and trashcans. The Dog Park would be gated and



open during daylight hours only.

Volunteers are needed to serve on the BHA's Dog Park Committee to help plan, organize, coordinate, and implement the creation of the park. A fund raising event is in the planning stages. Interested individuals should contact the BHA at 681-2051 or Bloomington.Homeowners@verizon.net.

MACK AUSTIN/Photo

Flag Day Is Feb. 24



Now is the time to show our support for the Bloomington residents who are serving our country. Many from the Bloomington community are providing direct support to those who have already been deployed. Let's keep those flags flying with pride.

Princess

From page 15

a bit lackluster.

"There are so many little girls in Bloomington who would love to have a 'princess' at their birthday parties. At Kaitlyn's party, I just had all these ideas about how I would portray a princess, and later decided it was something I would like to try," she said.

Kuhn launches her "Party Princess" home business this month. For a fee competitive with other local party companies, she will arrive in grand style at children's birthday parties in costumes recalling Disney's Snow White or Cinderella, and entertain the birthday girl and guests for about an hour.

Although she has no shortage of ideas to fill the hour's time, Kuhn said she is open to any suggestions parents might have to personalize their little princess's special day.

"We can play Pass The Crown (a version of hot pota-

to), read stories, do face painting, simple crafts, anything that will make the birthday girl's day fun and special," she said.

Naturally blessed with an Ivory Girl countenance and soft-spoken demeanor, when Kuhn assumes character, she comes dressed to charm. Her mother custom made two princess costumes for her; a colorful Snow-White look-alike and a very Cinderella-esque gown, replete with poufy sleeves, a vision in baby blue satin and sparkles.

Asked if she might expand her repertoire to include popular boy's characters, Kuhn laughed demurely.

"I think right now I'd like to stick to what I know best, and that would be little girls," she said, referring to her two daughters.

"I can't see myself dressed as Spider Man or Bob the Builder, but you never know!"

For information, call Kuhn at 662-0202.

Cherry's

Fun Atmosphere

- Great Food
- Spirits
- Game Room

Party Platters To Go
100 wings plus celery & Blue Cheese
\$32.95

10 Wings FREE!
with any adult purchase.
Exp. 3/1/03. Dine In Only. One coupon per table. Bloomington location only.

Now Serving BREAKFAST!
7:30 - 11:30am, Sat - Sun

Open 7 days a week
5 locations & growing
903 E. Bloomington
(In Bloomington Square)
662-1500

Cimino Cool Cats Have Character

A Gazette Report

Each month teachers at Cimino Elementary School in Bloomingdale select one "Cool Cat" from each class to be honored for exemplifying a specific character trait. The students are honored during a special awards ceremony, receive certificates and car signs and have their pictures displayed in the school's multipurpose room for the entire month. Congratulations Cool Cats!

Cimino Cool Cats for the month of November 2002 in grades K through 2 were Jake Patterson, Christian Mowery, Max Jordan, Nicholas Sinisi, Brice

Bequette, Karli Crognale, Haley Neil, Bradley Johnson, Leah Menetre, Starryin Cellamare, Madee Prether, Lydia Dees, Emily Jackson, Alex Duncan, Amber Smith, Abigail Provenzano, and Matti Park.

Cool Cats in grades 3 through 5 were Erin Anderson, Alyssa Chenoweth, Jared Coughlin, Maribeth Mitchell, Sarah Natale, Zach Wayson, Sarah Richards, Ricardo Salabarría, Victoria Connelly, Angelica Allen, Tomas Gacio, Marissa McGee, Kayleigh Gross, Kelsey Cardinal, Jacob Fant and Keisha Newberry.



Photos from Cimino Elementary School



BHA 2002 Dues Drive Big Success

A BHA Report

The Bloomingdale Homeowners Association, Inc. is pleased to announce that the 2002 BHA Dues Drive was the most successful drive in the history of our organization. Thanks to your continued support, the association will continue its efforts to support you in making Bloomingdale a great place to live.

The neighborhood PRIDE program and a new Dog Park project are now on the association's project board (see stories in this Gazette). The BHA also plans to reissue the popular Bloomingdale auto license plate in the near future.

Incidentally, if you made corrections to your dues statement, please note that

See Dues, Page 21

Letters

Send letters to Letters@BloomingdaleGazette.com or Editor, 3509 Bell Shoals Rd., Valrico, FL 33594. All letters are subject to editing.

Please Think And Drive

I am writing to remind all drivers to be responsible, cautious and respectful in the choices they make behind the wheel.

It's easy to believe it's just teenagers driving poorly, but that's not true.

Parents and grandparents beware: You are the role model for the children in your vehicle.

If you routinely make bad, aggressive or selfish driving decisions, so will the future teenagers who've learned from you.

Choose instead to set a good example and teach your children how to respect others.

Keep in mind that the decisions you make while driving do not affect only you.

Your vehicle is not a cocoon, isolated from the rest of humanity.

Take the time to consider the bigger picture. Reflect on the potential impact your decisions can have on the lives of others. Make a positive impact in your corner of the world by respecting others and making responsible decisions.

Beth Kalicki

Animal Services On The 'Net'

Would you please inform Bloomingdale residents about Hillsborough County's Animal Services Internet site? The address is <http://hillsboroughcounty.org/animsvcs>. This site is consis-

tently amongst the highest visited pages on the county's website, and I believe many residents would find it useful.

Greg Berhow

Dog Park Update

I recently read in the Gazette about a possible dog park in Bloomingdale and I want to tell someone what a great idea I think it is! When and where might it appear? I don't want to miss it.

Lana Vilmain

The Bloomingdale Homeowners Association is currently seeking volunteer residents to help form a Dog Park committee. Please see the story in this issue of the Gazette.



Lost Cat

Nine year old "Simpson" was last seen the night of Jan. 2, 2003 in the vicinity of Oak Crest. The long-haired, black and white cat has a distinctive black nose and white face, has front paws declawed, and was wearing a collar with bells. If you have seen Simpson, please call 655-9235

Rec Center T-Ball, Softball Start This Month

FREE TRACK PROGRAM OFFERED

By SHANNAN D. POWELL
Correspondent

February is shaping up to be a busy month at Bloomingdale's Stephanie Culbertson Recreation Center on Canoga Park Drive.

Registration opens this month for the center's T-ball and softball programs, for children ages 3 to 12, and track practices begin for any interested children, 6 and up.

"The thing with a lot of these rec-based programs is that they give kids a taste of rec sports and other programs," said Donna Clouse, park director. "After they've gotten a little taste of it and wanted to stay, there are many places around that offer programs all year long."

The center's T-ball program introduces children from 3 to 9 to the basics of baseball. All players get three underhand pitches from a coach. If they are not able to hit the pitches, the ball is swung on a tee and they swing until the ball is fair.

Children ages 10 and up play softball, with the same guidelines for coach-pitching and hitting from the tee.

In both divisions, there are

no strikeouts and no walks. In addition, everyone on the team bats and everyone plays the field.

"Basically, we do it this way so everyone has the same chance to participate," Clouse said. "All of our programs are participation-based, not dependent on what skills you have or which you are lacking."

"We're playing for fun, to learn the basic skills and to meet new friends."

The center's track program, part of a bigger Hillsborough County Parks and Recreation track and field program, gives kids an opportunity to learn the sport and compete in track meets at all levels.

Track is a free program for all children over 6 years old. Teams will enter the Dick Carlson Track Meet, a two-day event, as well as the Hershey's series of meets where competitors can advance to state and national levels.

For the first time last year, the county implemented a cross-country program. Of the 45 county runners, 32 came from the Bloomingdale rec center and "did very well," according to Clouse.

Registration is open in February for T-ball and soft-

See Center, Page 21

High School Needs Items To Auction

A Gazette Report

The Bloomingdale Senior High School Rajun' Bulls Band seeks donated items to sell at its 15th annual benefit auction. The auction will be held 6 p.m. at the school on March 8.

Proceeds will help support the school's band program.

Businesses or individuals willing to donate items for sale may contact Lynne Walther at 654-0013 or Barb Warner at 689-6893. Those donating items will be listed in the auction catalog and recognized by name as each item is sold.

A dinner and preview will be held prior to the auction at 5 p.m. The auctioneers are Col. Rob Hennessee and Col. John Jerigan.

SAY YOU SAW IT IN
THE
BLOOMINGDALE
GAZETTE

FHA • VA • CONVENTIONAL • NEW CONSTRUCTION • LOT LOANS

No Closing Cost Loans Available
Call for Rates

30 YEAR FIXED
5.375%
5.62% APR

15 YEAR FIXED
4.75%
5.15% APR

SMART LOAN
2.45%
5.62% APR

No Credit Score • No Income Verification
No Asset Verification
2% Down Payment Required

Rates are falling AGAIN!

DUNNE & COMPANY
RIVER HILLS MORTGAGE

Just like the stock Market, rates dip daily
call me to watch & lock your perfect rate.

4316 New River Hills Parkway • Valrico, Florida 33594

REDUCED PAPERWORK • SAME DAY APPROVAL
CLOSE QUICKLY

Located at the entrance to River Hills Country Club

Call Tim Dunne at
654-1044

River Hills
COUNTRY CLUB

A.P.R. based on \$150,000 loan amount. Rates and terms subject to change.
Rates were current at printing date. Equal Housing Lender.



MACK AUSTIN/Photos

Lithia Pincrest Construction Continues

With all the new construction near the intersection of Bloomingdale Avenue and Lithia-Pinecrest Road come the expected delays. Lanes in this area will be closed through at least February 6. Construction at the new Lithia crossing shopping center is progressing well after minor delays due to heavy rains. The buildings are taking shape as the walls rise. It won't be long now. You can see the walls rising for the new Publix Shopping Center off Lithia-Pinecrest Road and Bloomingdale Avenue. Soon many of us will be able to just walk to the grocery store.



Program Promotes Smart Sources Of Energy

By Brian Lott
Special To The Gazette

In a world where beautiful neighborhoods and homes conceal limited natural resources, one Brandon resident has found a program she believes makes a difference.

Pat Boody is a lifelong environmental activist who organized her high school's celebration of the first Earth Day in the early 1970's. Working for Tampa Electric Company, she learned about a way she could continue to help the environment. She immediately joined the hundreds of customers who subscribe to the company's Smart Source Renewable EnergySM program.

"It's hard to imagine a future where the resources we take for granted now are gone," said Boody. "But it's not a possibility - it's a certainty. The Smart Source Renewable EnergySM program lets me know I'm helping the environment."

The program helps fund new types of renewable energy. Customers can subscribe



Photo from Tampa Electric Company

Tampa Electric's solar panel array at the Museum of Science and Industry in Tampa, dedicated on Earth Day 2000, produces approximately 18,000 kilowatt-hours of electricity.

for as little as five dollars, which is added to their monthly electric bill and goes toward the development of additional renewable energy sources.

One source of renewable energy is solar power. Tampa Electric's solar panel array at the Museum of Science and Industry in Tampa is a prime example of clean, renewable technology.

Another application of renewable energy is biomass, a mixture of plant clippings that resembles mulch. Bio-

mass offsets coal in electricity production, leading to fewer emissions. Since the program began, subscribers have offset more than 144 tons of coal!

And subscribers have even more success to show for their support. In November, a micro-turbine generation project under development at the Hillsborough Heights landfill made headlines by

attracting four engineering and business experts from Macedonia to see how it could work for possible use in their own country.

The landfill's micro-turbine generator works by using the methane gas collected as the renewable energy fuel source in the production of electricity. The process will produce enough electrical energy to power 13 homes.

"My parents' generation never really had to consider these alternatives," said Boody. "If they had, the environment today might be healthier. It's never too late to start."

Visit tampaelectric.com to find out more about Smart Source Renewable EnergySM today.

Brian Lott, TECO Marketing and Customer Communications Coordinator, was raised in Bloomingdale and graduated from Bloomingdale Senior High School.

Center

From page 19.

ball for boys and girls, ages 3 to 12. The season runs from March through May from 6 to 7 p.m. on player's choice of Mondays, Tuesdays or Thursdays. The cost is \$20 per player.

Track season begins in February at the park for boys

and girls ages 6 and up. The track program is free and registration is open to all in advance or at practices. Practices are on Wednesday beginning Feb. 5 at 4:30 p.m.

For more information on these and other programs, call Clouse at 744-5907.

Dues

From page 18

the information on the statement was provided to us from the County Tax Assessor's Office. Our information is current as of about March 2002. If your statement required corrections, you may wish to contact the Tax Assessor's office to ensure the records of your home ownership are correct. If you might your home after February 2002, the records will be updated in time for our next dues drive.

Once again, thank you for your loyal support of The Bloomingdale Homeowners Association, Inc. If you have any questions, or if we may be of service to you, please phone us at 681-2051, e-mail Bloomingdale.Homeowners@Verizon.net, or join us at the next BHA meeting - 7 p.m. on Monday, February 6. All meetings are open to the public and are held at the Bloomingdale community office, 3509 Bell Shoals Road.

FishHawk Ranch Appoints Craig Eaton to Realtor Advisory Committee



Craig Eaton aka "The Big Guy" of Charles Rutenberg Realty, Inc was recently named to the FishHawk Realtor advisory committee. Craig's real estate experience spans over 25 years and includes success as a Loan Officer, Real Estate Salesperson, Investor, developer and even a builder. Specializing in FishHawk Ranch, Fish Hawk Trails and River

Hills, Craig brings a wealth of knowledge and experience to the FishHawk Ranch team.

Craig and his wife Debbie lead busy lives, as they also own Affordable Cruise.com, a national cruise agency located locally. We love to cruise, but with our busy schedules, it's sometimes hard to get away.

More information on Craig can be seen at his own web site at CraigEaton.com. He can also be reached by calling him at 813.672.8022 or via e-mail at Craig@craigeaton.com.

FOR MORE INFORMATION CALL CRAIG AT (813) 672-8022

289407



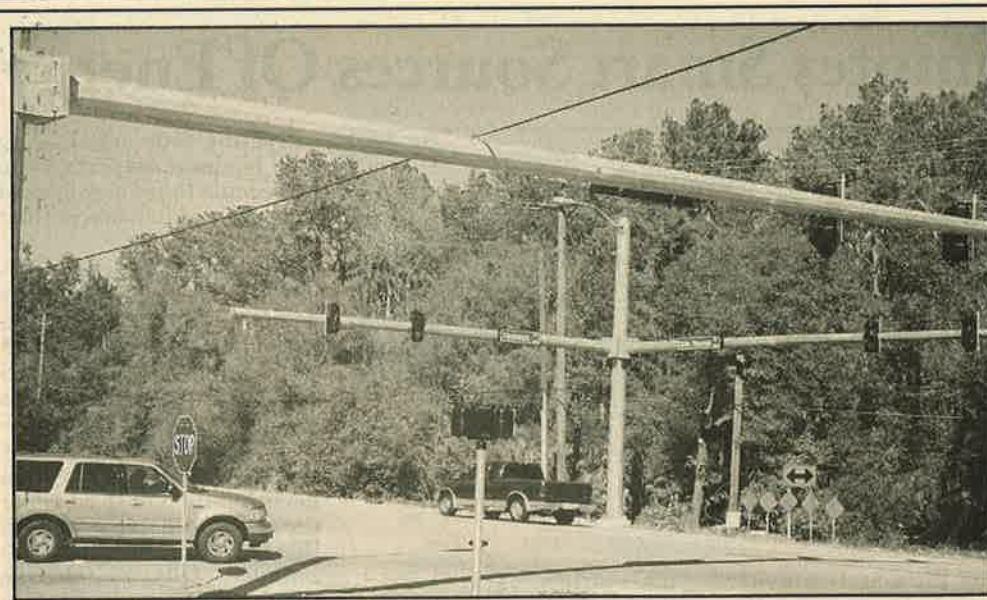
TRANSFERRED G.M.O. NEW!
Popular 3-way Split. David Weekly "Brampton" 2783 SF, 4/3 w/den, pool & 3-car garage. Over \$23k in upgrades; Corian counters, upgraded cabinets, tile, blinds. \$298,500



CONSERVATION IN HAWKWOOD
2 yrs. new w/tons of tile & extended screened lanai. 3/2/2 w/ den on a quiet street. Vaulted ceilings, bright & open. \$149,500.



NEW HOME FOR RENT
3/2/2 w/den in Tananger Ridge. Includes W/D, Ref and lawn maintenance. \$1,700/mo plus deposit.



MACK AUSTIN/Photo

New Signal on Lithia at FishHawk Blvd.

With the construction of Newsome High School well underway on FishHawk Boulevard, this new traffic signal system is a welcome sight. Congestion in the morning and afternoon will probably be the norm, so this should provide some control.

Bloomingtondale Soccer Goals: Teamwork, Momentum

By SHANNAN D. POWELL
Correspondent

Bloomingtondale Girls Soccer

After wrapping up their regular schedule last week, the Bloomingtondale Senior High School girls' soccer team is gearing up for its post-season.

Where there was inexperience in November, now there's a winning record that bespeaks a higher level of confidence.

"We are getting better and that's what we are all about, getting better as individuals and as a team," said Bulls coach Susan Peet, who was not sure what to expect from the young faces on her team when the season began. "They are learning from their mistakes."

Following a loss one game shy of the state tournament final four last year, the Bulls, who had finished at 11-4-3, graduated a core of four starting seniors.

This season Peet was depending on the leadership of Bloomingtondale's lone senior captain Ashley Quaid.

"Ashley is a leader on the field," Peet said. "Tactically, she reads the game as good as anybody."

Besides Quaid, Peet also acknowledges the contribution sweeper Lauren Oser has made this year, calling her the team's "workhorse".

But overall, Quaid credits teamwork for the Bulls' success.

"I think we have started working well together," said Quaid, who splits her time between midfield and forward positions. "We're finishing opportunities better and the experienced people have stepped it up."

"When we're finishing, we have a lot of different people scoring, sharing the wealth," Peet said. "But I think the inexperience comes through at times in clutch situations, like in our loss to Hillsborough 3-2 (on Jan. 17). We go up and we go down."

Though the team's inconsistency could be cause for worry, Peet sees opportunities to advance in the post-season through what she calls "a great deal of parity" in class 4A's district 5.

Bloomingtondale has met Gaither twice this season, splitting wins between them. During their match against Riverview, the Bulls tied the Sharks 1-1, but carried away a decisive 5-1 victory the following game.

"It's up for grabs depending who's on, who's up for it. All of us have had close games this year," said Peet. "You always want to take it as far as you can, but every step gets tougher and tougher."

Bloomingtondale Boys Soccer

Despite being handed its first loss of the season in the Student Sports Tournament in Tampa last month, the Bloomingtondale boys' soccer team has not lost its focus.

See Soccer, Page 23

What's Happening

Send announcements by the 20th of this month for publication in the next Gazette to News@BloomingtondaleGazette.com or Editor, 3509 Bell Shoals Rd., Valrico, FL 33594.

February 3 Homeowners Meeting

The Bloomingtondale Homeowners Association, Inc. board of directors will meet at 7 p.m. on Monday, February 3 at the Bloomingtondale community office, 3509 Bell Shoals Road, in the SunTrust Bank/Citgo station plaza. All meetings are open to the public.

Information: 681-2051 or Bloomingtondale.Homeowners@Verizon.net.

February 5 Town Hall Meeting

A Town Hall Meeting with Hillsborough County Commissioners is set for 6:30-8:30 p.m. on Feb. 6 at Plant High School, 1 Raider Place, just off Alexander Street in Plant City.

The forum offers southeastern county residents an open mike to talk with commissioners about roads, drainage, law enforcement, fire protection, parks, land use regulations, social services and any other community issues. The meeting will be broadcast live on HTV Channel 22. Information: 272-5275

February 10 Taxing District Meeting

The Bloomingtondale Special Taxing District board of trustees will meet at 7 p.m. on Monday, February 10 at the Bloomingtondale Community Office, 3590 Bell Shoals Road, in the SunTrust Bank/Citgo station plaza.

All meetings are open to the public. Information: 681-6667 or BSTD@BloomingtondaleGazette.com.

See Happening, Page 23

Happening

From page 21

February 12 Bingo Night

The St. Stephen Catholic School Parent-Teacher-Community Organization will host an evening of bingo Feb. 12 at St. Stephen Catholic Church, 5049 Bell Shoals Road, Valrico, from 6:30 to 9:30 p.m. The cost is \$15 for 20 games with a possible jackpot of \$200.

The PTCO offers an experienced caller and professional bingo equipment.

Refreshments and baked goods will be available. All proceeds go toward purchasing computer equipment and other items for the school. Information: 689-4900.

LaLeche League Meeting

LaLeche League, a mother's discussion group of parenting and breastfeeding, with accredited leaders on hand and on call, meets the second Wednesday of each month, 7 - 9 p.m. at the com-

Soccer

From page 22

If anything, coach Sam Isajar and the Bulls are surer of themselves.

"Even though we lost, it helped me realize our potential," said Isajar of his 13-1-2 Bulls. "I got a chance to play everybody. I am happy with the kids, especially the young ones. They are giving me more than I expected."

Playing in the Elite Bracket against other nationally ranked teams Dec. 21-23, the Bulls celebrated wins over Quartz Hill (Calif.), Satellite, Lake Highland Prep and Lake Mary, who gave Bloomingtondale a battle for fifth place by overcoming a 3-0 Bulls lead and forcing penalty kicks.

Their only loss came from Melbourne Central Catholic, the eventual Elite bracket champions.

"Obviously we wanted to win the tournament, but I came up short," said junior keeper Chris Sedlak, who has earned eight shutouts in 10

community room of Morris Chiropractic Center, 207 Kingsway Road in Brandon.

The next meeting is February 12. Information: 932-3664.

February 18 AAUW Meeting

Folk artist Ruby Williams will present the program at the Brandon American Association of University Women meeting to be held 6 p.m. on Feb. 18 at Stacey's Homestyle Buffet, 790 West Martin Luther King Drive in Seffner.

Ms. William's paintings have been displayed in museums, art galleries and private collections.

Membership in AAUW is open to women with a Baccalaureate or higher degree from an accredited educational institution. Between now and March 15, women may join and pay one half the annual dues for membership through June 30, 2003.

Contact Arlene at 689-8457 or Mary Ann, 681-4502 for information.

games this season and was named to the all-tournament team.

"For the rest of the season, hopefully we will go undefeated and win the state championship, as long as we keep ourselves healthy and keep playing together as a team."

Before heading into districts this month, Isajar would like to see more improvements on defense, especially not losing the ball in man-to-man situations.

But overall, he is pleased with the entire team's performance and prides himself on his plan of using as many players as possible in each game.

"That tournament showed me who I can play. I don't want to be like some other coaches who play the same kids every game. The way to make soccer better and more fair is to play everyone, to give every player a chance to develop."

Safe Boating Course

Flotilla 75 Ruskin of the United States Coast Guard Auxiliary will present a one day Safe Boating Program on Saturday March 15, 2003 from 8:30 a.m. to 4:00 p.m.

The class will be held at Riverview United Methodist Church annex, at the corner of Highway 301 and Riverview Drive.

Participants will be required to pay \$20 for materials and the program. Pre-registration is recommended as seating is limited. Completion of the program may result in a discount on your boat insurance. Information: Dave Suban, Public Education Officer, 681-3290.

February 23 Stamp For Our Soldiers

Lori Jordan, local resident and demonstrator for "Stampin' Up," a rubber stamping company, will hold a "Stamp Camp" to benefit military personnel stationed overseas. The group will

stamp cards and care packages to send to soldiers. The camp will be held Feb. 23 from 10:00 a.m. to 6:00 p.m. at the Osprey Club House in FishHawk Ranch. Information: 689-7337 or visit www.stampwithlori.com.

March 29 - 30 Art Festival

The Brandon Spring Festival of Arts will be held Saturday and Sunday March 29 and 30 at "The Barn" at Winthrop Village, corner of Bloomingtondale Avenue and Providence Road in Brandon. Exhibit categories include oils, acrylics and watercolor paintings, three dimensional art including sculpture and pottery, open media including photography, graphics, drawings and hand made paper, and fine crafts including jewelry, decorative fabric art, fused glass, stained glass and furniture. Saturday hours are 10 a.m. to 5 p.m. Sunday hours are 10 a.m. to 4 p.m. The festival is sponsored by The Brandon League of Fine Arts. Information: 654-4813.

"YOU THINK I WANT TO FAIL?"
"I HATE SCHOOL!"
"I DON'T REALLY CARE."

If your child is saying the wrong things, it's time to make the right call.

Your child may be smarter than his or her grades show. Our teachers help children of all ages overcome frustration and failure, and realize their potential. A few hours a week can help your child improve weak study skills and gain the Educational Edge. Your child can discover learning is fun. Our testing pinpoints problems and we tutor in reading, phonics, study skills, math and SAT/ACT prep. Since 1977, we've helped hundreds of thousands of kids do better in school. Call us and let us help your child break the failure chain.

\$50 off
complete diagnostic
evaluation

Brandon
(813) 681-1500

Carrollwood
(813) 908-1000

Palm Harbor
(727) 937-8400

Celebrating 25 Years Of Excellence In Education

Independently owned and operated, ©2002 Huntington Learning Centers, Inc.

Bloomingtondale Gets Five-Star Service



with

Luana
RUSSELL

Five-Star Service

Homes Recently Listed In Bloomingtondale

- 3943 Applegate Cr\$164,900
- 1328 Monte Lake Dr.\$169,900
- 1508 Crooked Stick Dr ...\$249,500
- 3905 Northridge Dr.\$289,900

Homes Recently Sold In Bloomingtondale

- 1202 Carrie Wood Dr ...\$143,000
- 2106 Crooked Creek Dr. ..\$264,900
- 2228 Hickory Ridge Dr. ..\$297,000
- 1106 Oak Brush Pl\$309,900

KW
KELLER WILLIAMS

R E A L T Y

O F B R A N D O N

510 Vonderburg Dr, Suite 200, Brandon, FL 33511

684-9500 or 685-8545

Call Luana and discover the
pleasure of five star service

*Happy
Valentines
Day!*