

The Bloomingdale Gazette

Vol. IX No. 1

Published by The Bloomingdale Homeowners Association

January 1987

LOOK WHAT WE'VE DONE TOGETHER!

January is the time when many people pause to reflect over the year just passed. So let's do the same.

From December to December, your BHA Board has accomplished the following:

...On December 18, after almost one full year of very hard work, the Special Taxing District became law.

...After 3 months of meetings and work, a special meeting was called by the BHA on March 18 and a vote by residents indicated that Parks East and West should be deeded to the County Parks Department.

...In March, The Bloomingdale Gazette became a tabloid-form newspaper.

...On March 18 the BHA changed its meetings to five times per year.

...In April, the BHA rewrote deed restrictions for the Parks Department to protect the residents living alongside the parks.

...A final accounting was made, and the remaining donated sum of \$815.49 was turned over

to the STD for start-up costs in April.

...In May we started to question the illegal dumping occurring in Bloomingdale. With coordinated efforts by the residents of Bloomingdale Oaks, investigative journalism, and active Board members, the County was fined \$10,000 for illegal dumping.

...May saw the Gazette become incorporated with its stock wholly owned by the BHA.

...May 2 Criterion said they were no longer going to maintain the West nor enforce deed restrictions. The BHA took up the task of sending out violation warning letters.

...In June, Bloomingdale Oaks asked for the BHA's help in seeking odor relief from the waste water treatment plant, and we became involved. We sponsored meetings with Commissioner Selvey and placed numerous telephone calls and articles. Finally, odor relief came in October.

...Hot Air Balloons became the central theme as a mini-balloon rally, sponsored by

Bloomingdale Realty, Allstate, and the BHA, took place on July 4 in Park East. The Bloomingdale 5k Fun Run saw residents racing on Nature's Way; while the kids marched in the Brandon Parade with their decorated bikes.

...Funding by the BHA and a front-page article in the July/August Gazette stopped the Mobile Watch from disbanding due to lack of volunteers. This effort brought the Watch 65+ new members.

...The BHA reported the removal of the wall on Bell Shoals by Gulf Land Homes to the Zoning Enforcement Board. This is still pending.

...The Newcomers and Oldtimers Picnic was a huge success in September with over 500 residents participating.

...Working for the BHA, Chris Pheils secured the designation of one lighting district in September for all of Bloomingdale to ensure lighting as new residents move in.

...In October, the BHA asked Paragon to put in

BHA Continued Page 26

INSIDE -

BHA Makes Donation.....Page 3

General Membership Meeting.....Page 5

Bloomingdale Avenue Widening.....Page 5

Bloomingdale Oaks Submits PetitionPage 11

Advertising Rates and Terms....Page 16

STD Hires Property Manager.....Page 30

The Bloomingdale Gazette
P. O. Box 918
Brandon, FL 33511

The Bloomingdale Gazette, Inc.

Published 12 times per year by the
Bloomingdale Homeowners Association, Inc.

Resident Door-Knob Distribution.....1,889
Mail, Free, and Subscriptions.....107
Total Distribution.....1,996

Rent-A-Kid Distribution.....1,994

Delivered FREE to all homes in Bloomingdale.

Editor.....Susan L. DeLuca
Advertising Mgr.....Colleen Anderson
Graphics Editor.....Kathy Watkins
Circulation.....Kathy Watkins
Reporter.....Cheryl Ledford
Reporter.....Sherry Hardin
Printer.....Doug Dance, Bloomingdale Resident
The Bay Area Money Saver
223-9711

DEADLINE: Articles, letters, and advertising
copy must be received by the 20th of the month.

THE BLOOMINGDALE GAZETTE, INC.
P. O. Box 918
Brandon, FL 33511

TELEPHONE 681-2051

We would prefer to conduct Gazette business from
Monday to Friday, 9 a.m. to 4 p.m. Please leave
a message on the answering machine if we are not
able to answer your call in person.

SUBSCRIPTION RATES: Anyone not living in the
Bloomingdale area is welcome to subscribe to the
BLOOMINGDALE GAZETTE at the rate of \$12 per
year.

THE BLOOMINGDALE HOMEOWNERS ASSOCIATION
Board of Directors
As of January 1, 1987

President.....Henry Brosnahan 681-7396
Vice President.....Jim Weiss 689-0254
Secretary.....Susan DeLuca 681-2051
Treasurer.....Janet Holzman 681-2548
Directors.....George Ball 689-8913
.....Steve Briggs 681-5303
.....Ted Keiser 689-4842
.....Daryce Moore 681-3263
.....Shelly Oakes 685-9492
.....Ron Thompson 685-5028
.....Jerry Underwood 684-5413
.....Errol Whitfield 681-7462
Alternates.....Bill Armstrong 684-5809
.....Mike Kelly 681-7338
.....Joe Liguori 681-9655

STANDING COMMITTEES

Park Committee.....Chairman, Russell Thompson
681-297

Fire and Disaster Fund Committee

STD Committee.....Chairman, Errol Whitfield
681-7462

THE BLOOMINGDALE MOBILE WATCH Core Committee

George Ball....689-8913 Hal Labkon...681-6853
David Guy.....681-5943 Paul Kelmer..681-9701
Chris Pheils...681-9026 Dan Ledford..684-6511
Jim Godfrey....685-9637

SPECIAL TAXING DISTRICT

Board of Trustees
P. O. Box 902
Brandon, FL 33511

President.....Fred G. Uphoff, Jr. 685-3013
Vice President.....J. Christopher Deem 684-2491
Treasurer.....Thomas M. Calcaterra 685-3097
Recording Secretary.....
Russell D. Thompson 681-2957
Corresponding Secretary.....
Christopher L. Pheils 681-9026
Trustee.....Joseph D. DeLuca, Jr. 681-2051
Trustee.....Robert W. Knott 685-0011

Property Manager.....Lynn Wagner

ADVERTISING RATES AND REGULATIONS

See Pages 16-17 for All Rates and Information
effective January 1, 1987.

WATCH FOR THE GAZETTE TO APPEAR ON YOUR DOOR
THE FOLLOWING WEEKENDS:

February 7/8	July 11/12
March 7/8	August 8/9
April 11/12	September 12/13
May 9/10	October 10/11
June 13/14	November 7/8
	December 12/13

LETTERS TO

THE EDITOR

Dear Editor:

APPRECIATION

In our endeavor to make the Marathon a community event and a top attraction for Bloomingdale, we have drawn the support of many business and public organizations. The Brandon Running Association would like to extend its appreciation to the organizations and businesses listed here who have so graciously supported the Marathon: Miller Brewing Company, Anthony Distributors, Turbana Banana, Sexton Valente Produce, Inc., Goldkist Poultry, Zephyrhills Bottled Waters, The Jogging Center, Coach's Center, Ramada Inn East, Don's Locker Room, Bloomingdale Realty Corp., Brandon Florist, Joe Daly, M.D., Len Strickman, M.D., B & E Landscape Design, Inc., Ybor Square, Inc., Humana Hospital/Brandon, Bloomingdale Plaza, Criterion Corporation, Charter Hospital of Tampa Bay, and the Hillsborough County Sheriff's Auxiliary for their continuing support.

Continued success of the Marathon in the future is dependent upon a mutual and beneficial relationship with our sponsors. We ask that you support and patronize their product or service and we extend our thanks to Bloomingdale East and West for your community involvement.

Ron Calub
Race Director

* * * * *

Dear Editor:

I am disappointed that the Brandon Running Association didn't do a better job of cleaning up trash after their marathon on 14 December. In the meetings before the race they promised that the trash would be picked up. Unfortunately, they didn't live up to their promise: many cups and cans were left, especially along Greenhollow Lane and across from Park East. I left a message on Mr. Moohan's answering machine, but he didn't return my call. I also know of one resident that called and he hung up on the individual. Next year, I think we ought to consider very carefully whether we let the race be run in our community again.

On another subject, I am frequently asked by residents what they can do about problems such as speeding cars, damaged road signs, etc. I recommend they call or write the appropriate county agency, Sheriff's Department, etc., or to the County Commission. The more people we have call or write, the better chance we have of getting response. The Homeowner's Association can and does do a lot of this for us, but we also need individuals to take action.

Jerry Underwood

* * * * *

(The next two letters are from Carole Henning, a resident of Riverview. She was referred to the BHA by Commissioner Jim Selvey as a concerned citizen. Carole is associated with the Brandon Circle Citizen Group. Please take the time to read both of her letters.)

To the Bloomingdale Gazette:

Recently, there have been several small articles on possible changes to the Faulkenburg extension at Causeway Blvd. and south and west to US 41. You may believe that these changes would not impact your transportation future. However, it could impact you if you use the intersection of US 301 and Bloomingdale and it may impact you if you use the Lumsden/Faulkenburg entrance to the Crosstown Expressway.

To the west of I-75 between Causeway (Lumsden) and Progress Village Blvd. (Bloomingdale Ave.), approximately 2000 acres are set for non-residential development. This development will produce significant traffic--particularly truck traffic. Much of this traffic will be aiming for I-75. If the Faulkenburg extension is put in properly, the traffic generated by development west of I-75 will move onto I-75 with little impact on residential traffic generated by the Bloomingdale area. If the southern section of the Faulkenburg extension is mishandled, 2000 acres of traffic will be thrown onto the intersections of US 301/Bloomingdale, Causeway (Lumsden)/US 301 and possibly Faulkenburg/Lumsden. If you use these intersections then the Faulkenburg extension issue is relevant to you.

The developer of the Folsom property (sw corner of Causeway/301) is asking for a modification to the Faulkenburg extension.

"Letters" on Page 27

THE BLOOMINGDALE GAZETTE
January 1987 - Page 3

BHA TO MAKE MAJOR DONATION TO THE MOBILE WATCH



Beginning with the February issue of The Bloomingdale Gazette, the Bloomingdale Homeowners Association will be donating one full page to the Bloomingdale Mobile Watch to be published as "The Watch Log." Not only will this page in the Gazette be utilized to disseminate Mobile Watch information, but it will give the Watch a fund-raising tool.

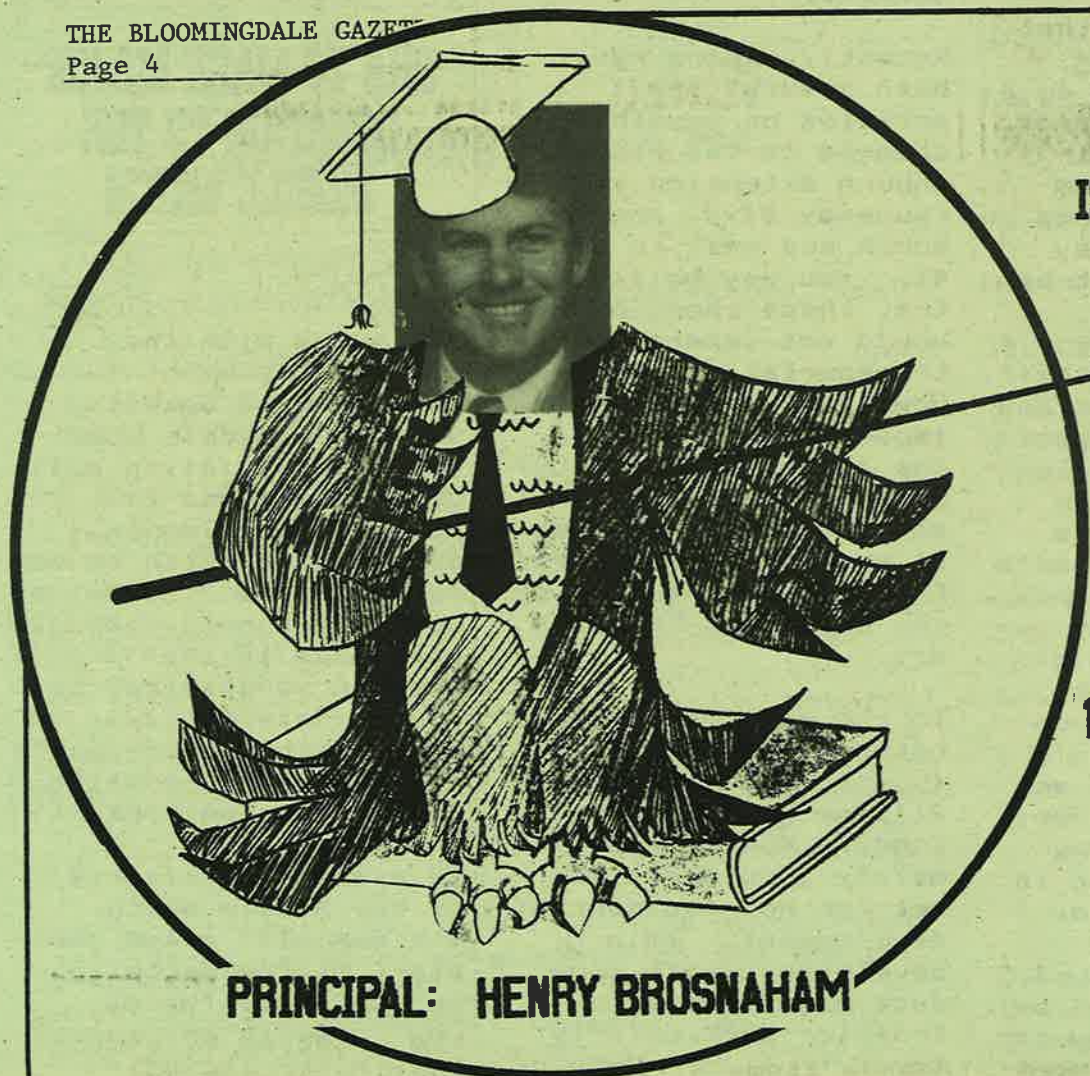
To assist the efforts of the Mobile Watch, the BHA will allow the staff of the Watch to set up their "Watch Log" page in any manner they wish--including the sale of advertising space on their page. All funds garnered by their efforts will go straight to the Watch at no cost to them as a donation by the BHA and the Bloomingdale Gazette.

According to Hal Labkon, spokesperson for the Mobile Watch, they will be selling business card size ads for placement on their page inside the Gazette. Anita Newbill, a resident in the East, will be their person in charge of coordinating advertising sales.

Wish to have your advertising funds donated to the Bloomingdale Mobile Watch? Call Anita Newbill at 685-8212. Anita is to be contacted only for the "Watch Log" page. All other advertising matters are to be referred to the Gazette number at 681-2051. ■

REPORT CARD

ISSUED TO:



Residential And Commercial Property.

611 E. BLOOMINGDALE AVE.
BRANDON, FL 33511 • 813-685-8887

1ST DAY OF SCHOOL: 8/11/86

GRADE AVERAGE

A+

PRINCIPAL: HENRY BROSNAHAM

GRADE	SUBJECT	NOTES
A+	Properties Listed	\$7,106,100
A+	Pending/Sold	\$1,143,000
A	Average Days On Market Until Contract	27 Days
GIFTED SUBJECTS		
Turnbury	Listed and Sold	1 Day
Wister Circle	Listed and Sold	15 Days
Clubview	Listed and Sold	8 Days
Eastridge	Listed and Sold	14 Days
SERVICES PROVIDED		
Free Relocation Package	Member Board of Realtors	Professional Staff
Free 1-800 #	Multiple Listing Service	Advertising

CLASS HOURS:
MON-SAT 9 TO 6
SUNDAY 10:30 TO 4:30

HONOR STUDENTS:
Donna Sullenberger
Cass Thompson
Cindi Guthrie

SCHOOL PHONE:
685-8887



SANTA CLAUS!

SANTA CLAUS WAS HERE! So exclaimed the delighted boys and girls who visited the wise old man himself on December 20. Elf Bill Armstrong took his first assignment as a new BHA Board member to heart and presented the youngsters with a truly nice visit with cookies and apple juice. Elves Janet Holzman and Errol Whitfield were on hand to assist Santa while Elf Joe Liguori provided pictures of the children's visit to the parents courtesy of the BHA. After the knee-

sitting time and wishes were spoken, Santa was escorted by Elf Steve Briggs throughout the subdivision where Santa threw candy to the waiting hands of boys and girls. Santa was last seen driving off to get ready for his big flight around the world on Christmas Eve.

The BHA would like to thank Bloomingdale Resident John Reeve for his kind and loving manner with the children of Bloomingdale as he listened to their Christmas wishes.

GENERAL MEMBERSHIP MEETING

The next...

GENERAL MEMBERSHIP MEETING

of the Bloomingdale Homeowners Association, Inc., will be:

DATE: Thursday
January 15, 1987

TIME: Coffee 7:30 p.m.
Meeting 8 p.m.

PLACE: Bloomingdale Community Church
1310 Bloomingdale Avenue

WHO: All Residents

Newly-elected President, Henry Brosnaham, will open the meeting at 8 p.m.

Agenda items will include, but are not limited to:

1. CORPORAL EARL D'AVIGNON, Sheriff's Department Deputy--

He will talk about the Neighborhood Watch Program and how we can save it. (This is NOT the Mobile Watch.)

2. A discussion and vote as to whether or not Bloomingdale Oaks will be allowed to join the Bloomingdale Homeowners Association.

3. The 1987 BHA Budget will be presented for Membership approval.

4. A proposal by President Brosnaham to slow down destruction and vandalism in Bloomingdale.

5. Updates on the multiple issues the Board is working on including the widening of Bloomingdale Avenue and speeding on Bloomingfield Drive.

Have something to say? Come to the meeting. We'll listen.

THE WIDENING OF BLOOMINGDALE AVENUE

On December 22, 1986, an article appeared in the East Hillsborough section of the Tribune that stated a meeting of the County Commissioners was taking place that afternoon at 2 p.m. to consider delaying the widening of Bloomingdale Avenue. As no advance warning had been given to the public regarding this meeting or the meeting's intent, a decision was made to contact Commissioner Jim Selvey immediately. After conferring with newly-elected President Henry Brosnaham, Director Susan DeLuca spoke

with Commissioner Selvey and gave him this statement on behalf of The Bloomingdale Homeowners Association:

"It is of paramount importance that the widening of Bloomingdale Avenue be addressed now and not at a future date for the following reasons:

1. Bloomingdale Avenue as it is now, is creating, and will continue to create, serious bottleneck situations and a safety hazard.

2. Bloomingdale has grown at the rate of 20 homes per week during the last several months and is the fastest growing area in Hillsborough County.

3. Not only has a new shopping center opened at Bell Shoals, and two new schools will be opening in nine months; but also, a major housing development by Arvida will be drawing traffic eastward on Bloomingdale Avenue.

4. The widening must not stop at John Moore, it needs to extend to Lithia Pinecrest Road.

5. A loss of revenue will be felt by the businesses on Bloomingdale Avenue during construction. But in 1991, 2-3 times the amount of current businesses will be affected."

Commissioner Selvey said he would argue our case. The issue of the proposed delays was not brought up at the 2 p.m. meeting--it was postponed.

On December 24, in the Tribune, Cheryl Michaels wrote an

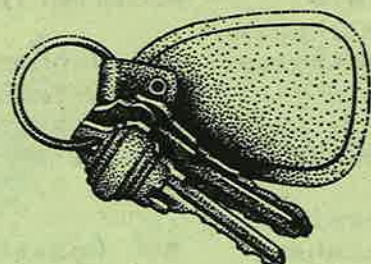
See WIDENING, Page 29

CITIZENS AGAINST CRIME

By Cheryl Ledford
Gazette Staff Reporter

According to Wendy Bierbauer, spokesperson for Citizens Against Crime, the purpose of this particular group is to motivate people to be aware. Crime is a problem everyone needs to be concerned about. And what is

your greatest weapon against crime? "Look Risky," says Ms. Bierbauer. "Criminals look for people that look easy, unaware. For example, get your keys out before you enter the parking lot."



She stressed that in a breakdown situation on the side of the road, people should not be hasty to accept help from just anyone. On the reverse side, you should also not give help. "Better to go to the next exit and call for help for the stranded motorist," added Ms. Bierbauer. If you are accosted in a parking lot while holding several shopping bags, the group advocates that you need not waste your breath screaming "Help, Murder, Police!" But DO toss your shopping bags at your assailant, scream FIRE!, run to a crowd, or stop and talk to strangers, then you appear risky.

This citizen's group does not advocate the carrying of weapons because, "most people don't make a good choice when it comes to weapons. A gun is best

only if you are qualified to use it. 95% of the people that own guns do not know how to use them," states the group.

Ms. Bierbauer said that she is based in Houston, she travels quite often instructing citizens on the best ways not to become a victim, and is available to speak to interested groups.

The Bloomingdale Homeowners Association has asked the Citizens Against Crime group to speak at the March General Meeting. Watch the Gazette for more details.



Beautiful Bloomers

724 West Lumsden Road
LaViva Plaza
Brandon, Florida

681-5086

Silk Trees
Silk Flowers
Silk Arrangements

(ENTIRE STOCK
1/2 PRICE)

Baskets
Ceramic Containers





"HELP TAKE A BITE OUT OF CRIME"

Sheriff's Deputy to speak at meeting

Corporal Earl D'Avignon, a Crime Prevention Specialist with the Sheriff's Department, will be the featured speaker at the January 15 General Membership Meeting.

Corporal D'Avignon is in charge of the Neighborhood Watch Program for the Bloomingdale Subdivision--which Bloomingdale is about to lose.

Without realizing the

requirements, the subdivision has allowed to slide the necessary meetings and updates needed to assure an effective Neighborhood Watch Program. Because of this, our area will soon lose it's certification with the Sheriff's Department and the signs will be removed.

The Neighborhood Watch is different from the Mobile Watch. The Mobile Watch is spon-

sored by Bloomingdale residents and involves residents physically patrolling the area. Whereas the Neighborhood Watch is a program of involvement for every member of this subdivision that lies passively until needed.

Specifically, Neighborhood Watch divides the whole area into blocks. A Block Captain and Co-Captain are in charge of their area. A telephone chain is established with the Block Captain at the head. Should it be activated by the Sheriff's Department, it provides a mechanism to contact every resident in the area within a matter of minutes. The Block Captains keep the phone list current.

Along with this telephone relay system,

residents are asked to report ALL suspicious activity to the Sheriff's Department. This is logged and investigated. It provides a permanent record in case a crime has been committed.

Another function of Neighborhood Watch is to teach residents how to secure their homes by having Sheriff-Department trained residents go to homes in the area, inspect them for security weaknesses, and show and/or assist them in securing their premises.

The Neighborhood Watch Program works. Corporal D'Avignon will show us how to get ours going again at this important meeting on January 15 at the Bloomingdale Community Church, 7:30 p.m. ■



Continental Pools

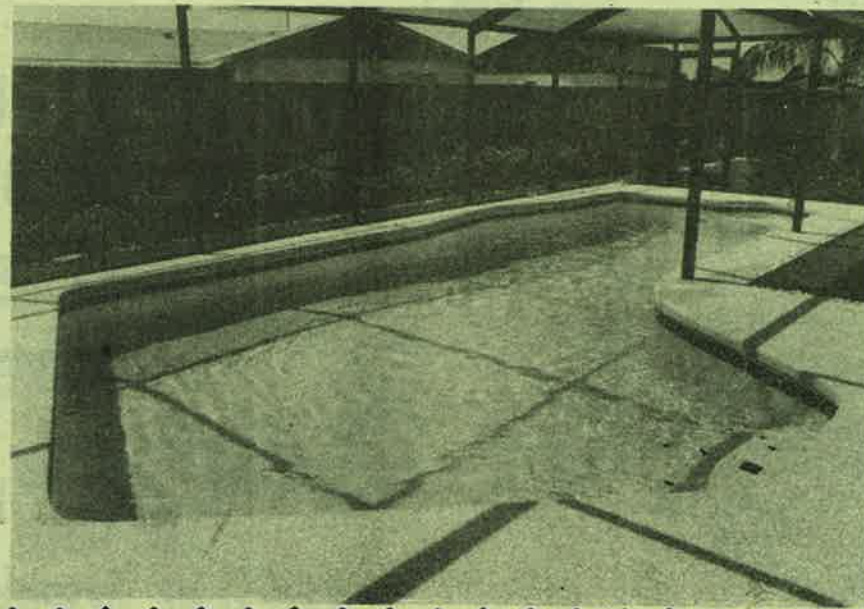
Buy Now!

Pre-Season Specials

• PLANS ENGINEERING PERMITS • SHOTCRETE SHELL W/MIN 6" WALLS • DECORATIVE TILE WITH CANTILEVER EDGE • CARTRIDGE FILTER • COMPLETE PUMP & MOTOR SYSTEM • AUTOMATIC CHLORINATOR AND TIMER • NORMAL ELECTRIC HOOK-UP • CHOICE OF BENCH OR GRAB RAIL • UNDERWATER LIGHT • 3 FT. OF COOL DECK • MAINTENANCE PACKAGE INCLUDING START-UP CHEMICALS

James T. Magee Cert. #CGC027847
20 YEAR (TRANSFERABLE) WARRANTY
(*CITY OF TAMPA SLIGHTLY HIGHER-COUPONS EXCLUDED)
1821 W. BRANDON BLVD.
FREE ESTIMATES

684-0979





NOW LEASING

THE VILLAGE CENTER

Corner of Bell Shoals and Glen Haven Road

RETAIL & OFFICE SPACE

IDEAL NEIGHBOR HOOD CENTER

We need a:
Drycleaner
Hairdresser
Gift Shop
Florist
Restaurant
Ice Cream/Yogurt
Bakery

**INTRODUCTORY
OFFER:**

3

**months
FREE RENT**

We need a:
Dentist
Physician
Attorney
Insurance
Travel Agency

**Here is a good chance to have a business of your own --
CLOSE TO YOUR HOME!!**

CALL 684-0016

CONTACT:

**Paul Fournier, Broker/Manager
RE/MAX Realty Group
2020 W. Brandon Blvd, Brandon**

On December 9 the BHA Board of Directors met for their monthly meeting. In attendance were: Ted Keiser, Errol Whitfield, Susan DeLuca, George Ball, Daryce Moore, Ron Thompson, Jerry Underwood, Henry Brosnahan, Bill Armstrong, Steve Briggs, Janet Holzman, Mike Kelly, and Joe Liguori.

The following is a summary of the more pertinent points of the meeting:

1. 100 Christmas trees and 12 new memberships from tree sales as of 12/9.
2. Permanent storage must be obtained for files, equipment, and records.
3. A motion was made and passed that a \$250 donation to The Bloomingdale Little League be put into the 1987 budget for General Membership approval on 1-15.

4. Errol Whitfield was asked to be the liaison between the STD and the BHA. He would attend all STD meetings as a representative of the BHA membership. Ted Keiser will draft a letter to Fred Uphoff about this.

5. Mike Kelly will be Task Force Chairman in charge of the speeding problem on Bloomingfield Drive. Ted Keiser, as President, will write a letter to Commissioner Selvey, County Administrator Buhrow, Gary Tait of the Traffic Department, Sheriff Walter Heinrich, and the newspapers introducing Mike Kelly as Task Force Chairman assigned to the serious speeding problem on Bloomingfield Drive.

6. Jerry Underwood will be working on getting the speed limit lowered on Bell Shoals plus a crosswalk from East to West.

7. Bill Armstrong will be in charge of the December 20 Santa visit. Joe Liguori, Jim Weiss, and Steve Briggs will assist.

8. George Ball will contact the Parks Department to get Park West in shape plus the pond cleaned out.

9. Susan DeLuca, George Ball, Errol Whitfield, and Janet Holzman will form the Budget Committee to write the 1987 budget for 1-13.

10. Elections were held:
President - Henry Brosnahan
Vice President - Jim Weiss
Treasurer - Janet Holzman
Secretary - Susan DeLuca

11. Board meetings will be on the second Tuesday at 7:30 p.m., Bloomingdale Community Church.

12. Ron Thompson will be working with Susan DeLuca to explore upgraded equipment possibilities for the

Gazette.

13. The bronze plaque to Paragon will read: "To Paragon in appreciation for this sidewalk. The Bloomingdale Homeowners Association, Inc." A framed letter will be given to Paragon also.



The Mobile Watch still needs
Volunteers!
Call George
at
689-8913

windows & more ...more selection
...more service
...more personal attention
...more than just windows.

ALL NAME BRANDS AT DISCOUNT PRICES

from verticals to wood blinds
to mini blinds to shutters
to pleated shades to over-treatment
to draperies to bedspreads

YOU GET MORE QUALITY FOR LESS MONEY

FREE SHOP AT HOME SERVICE
ALSO IN-STOCK COUNTRY LACE CURTAINS

Located at the Village Center
4334 Bell Shoals Rd. (& Glenhaven)
Bloomingdale, 685-0648



We wish to stress the importance of your help; without the support of the community we would not be able to put on a successful road race. We look forward to working with you again in the future.

Linda Ralph
Corresponding Secretary
Brandon Running Association

Dear Bloomingdale Homeowners Association:

On behalf of the Brandon Running Association, we would like to take this opportunity to thank you for your support of our Bloomingdale Marathon and 5k road races held on December 14, 1986.

We had a very successful road race with over 300 participating in the marathon and about 200 running the 5K.



GRAND OPENING



Grand Opening Savings On Bloomingdale's Finest Home Value

Pine Grove Townhomes are unquestionably the finest new home values to come to Brandon's prestigious Bloomingdale community. Such a value, in fact, that only 25 units remain in our first phase — 21 units sold prior to construction.

At Pine Grove, the finest in contemporary amenities are all standard features.* Beautiful fireplaces, wetbars, skylights, garages, balconies, tiled entries

and ample storage space are yours in a choice of one- two- and three-bedroom floorplans.

Pine Grove is part of the great Bloomingdale lifestyle that includes a championship golf course, tennis, basketball, racquetball, parks and picnic areas. All conveniently located just 20 minutes from downtown Tampa via the Crosstown Expressway.

At Pine Grove you'll find everything you'd expect from a

luxury condominium. Location. Facilities. Amenities. And, while they last, equally impressive Grand Opening Savings.



Springvale Drive, South of Bloomingdale Rd. 684-1878



Pine Grove

From the \$50's to the \$80's

Criterion

Exclusively Marketed by Criterion Properties, Inc.
Lic. R.E. Broker

Models Now Open



**BETTER IN
BLOOMINGDALE**

*Available in most floor plans.

BLOOMINGDALE OAKS PETITIONS TO JOIN BHA

On December 16, 1986, Mark Chapman, a resident of Bloomingdale Oaks, presented the BHA Board of Directors with a signed petition with 96 signatures. This petition states that the residents of Bloomingdale Oaks would like to join The Bloomingdale Homeowners Association, Inc. The 96 signatures represent 66% of the 146 homes in the Oaks.

The decision to allow them entrance to the BHA now lies with the General Membership. The BHA Board of Directors is submitting this change in Bylaws and State Charter for the Membership's approval:

•That the legal des-

cription for the State Charter of the Bloomingdale Homeowners Association, Inc., be amended to include the subdivision of Bloomingdale Oaks. That these residents will have the same membership privileges as the members which currently comprise the areas of Bloomingdale East, West, South, and Estates.

At the meeting on January 15 for all members of Bloomingdale East, West, South, Estates, and Oaks, a vote will be taken. If the amendment is approved, the following will happen:

1. The Bylaws will be amended to show their inclusion.
2. The legal description on the State Charter must be changed.
3. The Bloomingdale

Gazette will permanently be delivered in that area as part of it's normal route.

4. Dues statements will be distributed to all Oaks residents for payment in February.

5. They will receive equal representation under the Bylaws of the BHA.

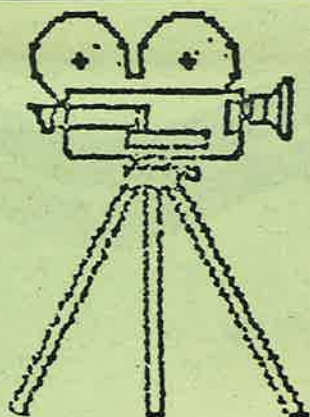
The Bloomingdale Oaks Subdivision is one of two very small areas that are within Bloomingdale that are not within the BHA's demographic sphere. The BHA Board is hoping for approval from the General Membership of this change. ■

WE TRIED—HONEST!

In November we said that we were going to put the Christmas Tree in the lake on Bell Shoals this year. Well...we tried--honest. We contacted Mrs. Grubbs who lives on the lake for help. She said the float that was used three years ago was dismantled and thrown away because it was no good any more. She said that we were welcome to use their vacant lot next door to

build another pontoon and float the tree. She even volunteered their electricity for the lights, and they would turn them on every evening. But to build another one meant locating four oil drums, which didn't prove easy. In fact, we never did find any.

So next year we'll start this in October and see if we can't get the tree floating for Christmas.



Rent a Camcorder

Mon, Tues, Thurs
2nd Rental only

\$1.00

Wed. - Rent one -
Get one Free

ADMIT ONE

FOUR STAR VIDEO

3509 Bell Shoals Road
Valrico, Florida 33594
689-3257

FREE ANNUAL MEMBERSHIP

GIFT CERTIFICATES AVAILABLE

ALL
TAPES
\$1.99

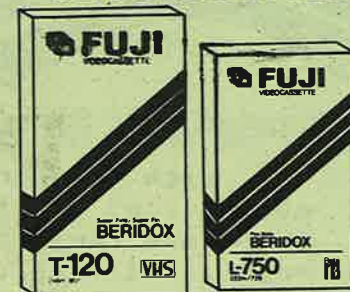
Open 7 Days
Mon-Sat 10-9
Sun 12-5

48hr.
RENTALS
AVAILABLE

ADMIT ONE

FUJI

VIDEOCASSETTES



\$1 REBATE* WHEN YOU BUY 1
FUJI VIDEOCASSETTE
*ON SELECTED TAPES

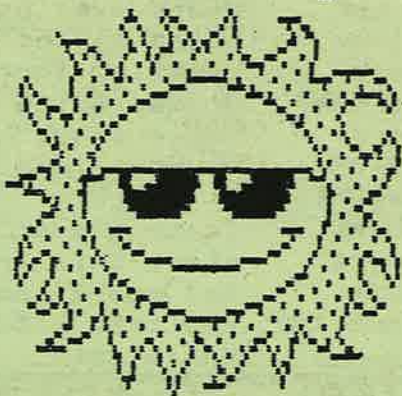
Offer ends Mar. 1, 1987
Put the good stuff on
the good stuff.™

\$4.49 Your Price
Your Price After Rebate
(Limit 16)

VCR Repairs/
Tape Repairs

BLOOMINGDALE... WE ARE HERE TO SERVE YOU!

SPARKLE POOL SUPPLY & SERVICE
AND
QUALITY SOLAR SYSTEMS OF BRANDON



4340 Bell Shoals
(The Village Center)



BioGuard[®]

Quality Solar Systems

With the sun shining 80 to 90 percent of the time during the day in Florida, there are three alternatives: you can hide from it, tan under it or plug in to it.

Gene and Carol Kalinowski, and their son Kevin, can't help with the first two choices. But as proprietors of Quality Solar Systems of Brandon, they can help you take advantage of the sun's power and lower your energy expenses.

The Kalinowskis have been serving Brandon for five years in the sales, installation and service of solar systems, for domestic water and pool and spa heating systems.

"We're a family business," said Carol Kalinowski. "As such, we're interested in dealing with families, making sure they get honest sales and proper service."

"Service is our business," said Gene. "After a sale, we don't forget our customer."

More information, without obligation, is available by calling 685-4419.

Sparkle Pool Supply & Service

Ric Grimmel and Gene Smith are the owners of Sparkle Pool Supply & Service. They are authorized **BioGuard** dealers for all of your pool, hot tub and spa chemical and supply needs.

Also offering monthly cleaning, chemical service and repairs.

FREE HOME DELIVERY
(with a \$15 minimum order)

681-2626



BIOGUARD COMPUTERIZED WATER ANALYSIS SYSTEM

MOBILE WATCH NEWS

By Hal Labkon
Core Committeeman

As we begin a new year, I would like to take this opportunity to thank some people who have helped us during 1986.

Core Committee for their time and energy in helping to make the Watch run smoothly and to all the volunteers without whom the Watch couldn't operate.

1. Late last year the Watch received donations of mobile radios from Ed Sandkowski and Bruce Java. Thank you for your generosity.

4. On December 14 the Bloomingdale Marathon and 5K races were held in our community. The Mobile Watch provided traffic control inside the community and communications for both races. I would like to thank the following people who gave of their time very early on that Sunday morning: Bill Asturias, Barry Beard, George Ball, Mike Boothe, Henry Brosnaham, Frank DeVito, Bob Francis, Hugh Golletz, Marshall Gonzalez, Harry Harp, Mike James, Bob Juniet,

2. In order for us to print our schedules, rosters, etc., we always need to use a copy machine. We would like to thank Criterion Corp. and Henry Brosnaham of Bloomingdale Realty for the free use of their machines.

3. My personal thanks to the members of the

Paul Kelmer, Jerry Kent, Dan Ledford, Tim Lovejoy, Tom Murman, John Newbill, Chris Pheils, Jim Shriver, Frant St. Pierre, Jamie Taglie, Jim Taylor, Bill Vaughn, Errol Whitfield, and LeWayne Wyatt.

Without these people we never could have accomplished our goal. The Brandon Running Association was very appreciative of our help and has given us a generous donation for which we are very thankful.

5. Finally, I would like to thank Skip Mowery for his unending efforts on behalf of the Watch. Skip has spent hundreds of hours of his time developing

THE BLOOMINGDALE GAZETTE
January 1987 -- Page 13

the computer programs we use to schedule the Watch and keep it running. For the past two years, Skip has produced our schedules each month, been a base station, as well as a mobile patrol, and responded to last-minute calls to go out and check suspicious activities. Skip has "retired" from the Watch and as a final gesture of help, has donated his base station and mobile equipment to us as well as the "rights in perpetuity" to the computer programs he developed. Skip, a simple "THANK YOU" is not enough. We could never have grown to where we are without you and your help. ■



A & G PALMS



Growers of Quality Palms
Landscaping
Palm Trimming & Maintenance



Offering January & February
LANDSCAPE SPECIAL

Quality Landscaping - At Affordable Prices
Sprinkler Systems • Sod Work • Call For Free Estimate
ASTRID & GREG DAVIES - Home Phone (813) 685-5620

VALUABLE COUPON

Babe's Pizza

Coupon Good
Sunday-Thursday

GOOD FOR

\$2.00 OFF
Double-Decker Pizza

or

\$1.00 OFF
Regular Pizza

Eat In or Carry Out

ALSO SERVING DELICIOUS SANDWICHES AND SALADS

86

Open at 4 PM
on Sundays

BLOOMINGDALE & KINGS
KINGS ROW CENTER

685-2231

WE DELIVER
CALL 685-2231

Coupon Not Good On Delivery

Bloomington Presbyterian Church

CHURCH SCHOOL WORSHIP SERVICE 10:30 AM
9:15 AM - at - (with child care)

THE TINY CITIZENS CHILD CARE CENTER
11418 BLOOMINGDALE AVE.

PROVIDENCE RD. BLOOMINGDALE AVE. KINGS AVE.

Rev. James G. Manor, Minister
PRESBYTERIAN CHURCH (U.S.A.) Southwest Florida Presbytery



BLOOMINGDALE
Golfers Club

**LADES
GOLF
CLINCS**

Starting January 15, 1987

For Details Call 685-4105

WE NEED...



TELEPHONE VOLUNTEERS

The Bloomingdale Homeowners Association needs the following please:

We need one or more individuals willing to make telephone calls to recruit volunteers to help with various functions.



STORAGE SPACE

We need permanent storage space for equipment, files, and records.

bhg

ABLE TO HELP? Please call Susan DeLuca at 681-2051. THANK YOU!



**CALL AND ASK FOR
DONNA MACGIFFERT**
BLOOMINGDALE RESIDENT

 **Merrill Lynch
Realty**

Florida, Inc.

257 WEST BRANDON BLVD.
BRANDON, FLORIDA 33511
(813) 689-8102

FROM: DONNA MACGIFFERT, REALTOR ASSOCIATE
Bloomingdale Resident
Million Dollar Club
685-8617 eves./689-8102 office

SOLD 15 IN BLOOMINGDALE!!!

GREAT NEWS TRAVELS FAST: HAVE YOU HEARD? DONNA MACGIFFERT, REALTOR ASSOCIATE, AT MERRILL LYNCH REALTY, FLORIDA, INC. HAS SOLD 15-FIFTEEN (that's right!) in the past few months. I am pleased and proud to announce that I HAVE HELPED 18 BUYERS AND 18 SELLERS TO SELL.

IN LESS THAN ONE YEAR EIGHTEEN (18) HOMES were listed and/or sold by me, DONNA MACGIFFERT, REALTOR ASSOCIATE, AT MERRILL LYNCH REALTY FLORIDA, INC.

THINKING OF SELLING??? OR LOOKING TO BUY A HOME???

WHY NOT JOIN THE WINNING TEAM?

**MERRILL LYNCH REALTY,
DONNA MACGIFFERT, AND YOU !!!**



HAPPY NEW YEAR!

Donna MacGiffert

BLOOMINGDALE RESIDENT
685-8617 Evenings
689-8102 Office



By Susan L. DeLuca, Editor

The Gazette has the HELP WANTED sign out on the door again. This time it is for two positions--News Manager and Advertising Manager.

The News Manager is a new position within the staff that has just been created. Sherry Hardin and Cheryl Ledford are still remaining with the Gazette, but they have full-time jobs along with their Gazette involvement. So I am looking for someone who will head up the News Department that has newspaper experience or a journalism degree (and will work with Sherry and Cheryl). I think this person will work about 20-25 hours per month, but that's

flexible.

The Advertising Manager's position will be open in the next month. Colleen Anderson, who is doing a fantastic job, will be leaving to seek full-time employment. It's going to be difficult to fill her shoes, but fill them we must. The time involved on this job is about 40-45 hours per month. I am looking for someone who is bright and cheerful. Having experience in advertising is a plus, but not necessary. We are fortunate in that we do not have to seek out advertisers, but this person will make contact with new businesses in the area as they open. A nice telephone personality and a reliable car are important.

The Bloomingdale Gazette has now grown to the point where we can offer monetary remuneration to the staff. Mind you, it's not enough to feed a family of six, but we are getting there.

If you are interested in either of the positions above, don't mind crazy deadlines, and are a Bloomingdale Resident, please submit your resume no later than January 31 to me: Susan L. DeLuca, Editor, at The Bloomingdale Gazette, Inc., P. O. Box 918, Brandon, FL 33511.

When you dial the Gazette telephone number of 681-2051, what do you get? My home. Evidently, many people don't realize this. The Gazette is housed in my living room and dining room. (Occasionally it

threatens to envelop the kitchen too.) The Gazette staff will sometimes work here during the day, and then in the evening, we tiptoe over pieces of Gazette as it gets ready to go to the printer. Sometimes I get so many calls during the day (as many as 20-30 per day) that I turn on the answering machine for some time with the kids. So don't get discouraged--leave a message and I'll call you back - I promise.

Which leads me to another point...please DO call when you have questions or news tips. Many of the articles in the Gazette are prompted by residents who have questions and news items that are passed on to me. Unless we just plain forget, we try to get all the information you give us into the paper. So keep calling. -SLD



ANIMAL EMERGENCY CLINIC

PHONE 684-3013 684-3137

THE BRANDON, VALRICO, RIVERVIEW AREA VETERINARIANS ANNOUNCE THE OPENING OF THE ANIMAL EMERGENCY CLINIC AT THE COUNTRY VILLAGE SQUARE (ADJACENT TO SONNY'S B.B.Q.)

PARTICIPATING VETERINARIANS

- BLOOMINGDALE ANIMAL HOSPITAL
BRANDON VETERINARY HOSPITAL
KELLY ANIMAL HOSPITAL
MEADOWRUN ANIMAL HOSPITAL
MORGAN ANIMAL HOSPITAL
RIVERVIEW VETERINARY HOSPITAL
RUSKIN ANIMAL HOSPITAL
SANTA-CRUZ ANIMAL CLINIC, INC.
SUNCOAST VETERINARY CLINIC

HOURS MON.-FRI. 6 P.M.- 8 A.M.

WEEKENDS SAT. NOON - 8 A.M. MON.

745 WEST BRANDON BLVD.

Spotless CLEANERS & LAUNDRY

SERVICING THE TAMPA BAY AREA FOR OVER 50 YEARS WE WANT TO BE YOUR NEIGHBORHOOD CLEANERS!

NOW SERVING BRANDON WITH 2 CONVENIENT LOCATIONS

BELL SHOALS Bloomingdale Cen. Corner Bell Shoals & Bloomingdale next to Clover Conv. Store 684-1864

We Offer Same Day Service On Most Garments!

OAK PARK PLAZA Kings Rd. & Lumsden Ave. 685-6039

Hours: Mon.-Fri. 7-7 Saturday 9-4

Effective January 1, 1987, The Bloomingdale Gazette, Inc., will be changing the way it charges for advertising. We will be going to "Column Inch" pricing. There are several reasons for this: First, as the Gazette grows, it will be easier to manage if we establish industry standards now. Column inch rates are used by the Tribune and the Brandon News. As most advertisers are familiar with this type of rate structure, we are adopting it also.

Second, by charging by the column inch, there will be more latitude in size. Not only will there be a size for everyone's budget, but it will make the ads on the page more interesting to look at.

Third, please notice in the rates that there are three sections. One is for advertisers not within Bloomingdale; another is for Bloomingdale Residents; and a third is for BHA members.

The door-to-door Rent-A-Kid system that we have had remains the same, with reductions in price as noted.

We've added a new dimension

with offset printing. (Provided by Dave Cutting, a Bloomingdale Resident that owns the Print Shack on Busch Blvd.) We will layout flyers and then have them printed to your specifications for insertion with the Gazette or for direct door placement.

As for layout, we found we had a professional artist on our staff and didn't even know it--Kathy Watkins. Kathy's work appears all through this issue of the Gazette and is signed with her initials. Her artistic endeavours are beautiful and professional, adding a very nice touch to our community newspaper.

Colleen Anderson, Advertising Manager, is available at 681-2051 if you have any questions about placing an ad.

And last, but not least, we have printed our General Terms and Conditions. These have always been around, but this is the first time they have been stated in print.

We always appreciate the comments and compliments that you give to the Gazette staff. Thank you!

STAFF

Editor.....Susan L. DeLuca
Advertising Mgr.....Colleen Anderson
Graphics Editor.....Kathy Watkins
Circulation.....Kathy Watkins
Lead Reporter.....Cheryl Ledford
Reporter.....Sherry Hardin
Printer.....Doug Dance, Bloomingdale Resident
The Bay Area Money Saver
223-9711

P. O. Box 918 -- Brandon, FL 33511
Telephone 681-2051

We would prefer to conduct Gazette business from Monday to Friday, 9 a.m. to 4 p.m. Please leave a message on the answering machine if we are not able to answer your call in person.

The Bloomin

Published by The Bloomingdale Gazette

Rates and Regulations

TYPE	BLOOMINGDALE RESIDENTS:				BHA MEMBERS:	
	Open Rate	3+ Months Pre-Pay Rate	Open Rate	3+ Months Pre-Pay Rate	Open Rate	3+ Months Pre-Pay Rate
Column Inches: 1-12	\$ 5.00	\$ 3.25	\$ 4.00	\$ 2.90	\$ 3.85	\$ 2.80
Column Inches: 13-24	\$ 4.75	\$ 3.05	\$ 3.75	\$ 2.70	\$ 3.65	\$ 2.60
Column Inches: 25-36	\$ 4.65	\$ 2.95	\$ 3.65	\$ 2.60	\$ 3.55	\$ 2.55
Column Inches: 37-48	\$ 4.60	\$ 2.90	\$ 3.60	\$ 2.55	\$ 3.50	\$ 2.45
2-Page Center Spread	\$240.00	---	\$220.00	---	\$200.00	---
1 Color Plus Black on Center	\$ 90.00	---	\$ 90.00	---	\$ 90.00	---
Business Card Ad 6 month minimum	---	\$10.00	---	\$10.00	---	\$10.00
Classified-- cost per 20 Words	\$ 2.00	\$ 2.00	\$ 2.00	\$ 2.00	FREE (For non-business):	---

DEADLINE: 20th of the month.

PRINT DATES AND CIRCULATION: A statement of our current circulation and distribution dates appears on Page 2 of the Gazette. Circulation numbers are updated monthly.

CHRISTMAS TREE SALES

A GROWING EXPERIENCE

BY BILL RHEY AND PATRICK SERRA

The first BHA Christmas Tree Sale proved to be a learning experience. In the process of operating the stand in the new Bloomingdale Square, these lessons were learned:

1. **Freshness of Trees:** In order to insure freshness (particularly with the unseasonal heat experienced this year), trees should be under a tent or in shade, rotated in frequently, or stored with trunks in water. Our Virginia Pines were cut November 26, and those buying early and putting them in water had no problems. As

Christmas neared, trees remaining on the lot dried considerably. In the future, trees will be delivered in smaller lots and will be given better protection.

2. **Variety:** Though most Christmas tree purchasers prefer pines, we discovered that a significant number of shoppers will purchase only a fir or a spruce. We plan to offer a greater variety in the future.

3. **Display:** Shoppers want to be able to see all around a tree. A problem of too many trees in too small a

space, as well as lighting and sign problems, will be solved in the future.

4. **Hours of Operation:** Problems with understaffing and electrical equipment caught up with us the weekend before Christmas. Apologies to those of you wishing to purchase a tree but finding no attendants on duty. In the future, operations are planned for 12 hours/day for two weeks preceeding Christmas.

In summary, the Christmas Tree Sale did result in about a dozen new members for the BHA, as well as a fin-

ancial windfall. Thanks to Paragon for their terrific attitude and cooperation in providing space for the stand. We thank you who purchased trees for your support, and hope you enjoyed your trees. We look forward to being able to serve you better next year.

(Editor's Note: Bill Rhey and Patrick Serra are Bloomingdale residents who took on this project for the first time and had to learn the hard way as to how to sell Christmas trees. The BHA extends their appreciation to Bill and Patrick for the hard work and effort they put into the tree sales. With what they learned this year, next year's sales should go a lot smoother for them--especially now that they are experts.)



ROBERT A. HONEGGER, M.D.

INTERNAL & PREVENTIVE MEDICINE

Announces the Opening

of his practice for the treatment of Internal & Preventive medicine

3413 S. Kings Ave., Suite 100

Brandon

684-4470

Mon-Fri 9-5

Flexible hours available

NEW PATIENTS SEEN SAME DAY

Treats adults of all ages

Bloomingdale Resident

Corner of Kings & Bloomingdale

MAY I INTRODUCE...

By Sherry Hardin
Gazette Staff Reporter

As new businesses open here in Bloomingdale, we will be presenting stories and interviews to be able to get to know them better (as we have done in the past). These are not meant to be advertisements, but rather an introduction to the people that call Bloomingdale home, whether as business owners or as residents.

So--may we introduce....

Windows and More is the brainchild of sisters-in-law Debbie and Kathy Mikes. In looking for a place to start their business, they discovered the high growth area of Brandon; which, of course, led to the Bloomingdale community. They are offering quality, custom products at a substantial discount.

Their store is located on Bell Shoals at Glen Haven, in the Village Center with Convenient Mart.

Kathy and Debbie offer a winning combination. Kathy has a degree in interior design and has several years experience with a firm in St. Petersburg. Debbie has a business background and as Kathy says, "A natural eye for decorating."

The plan for the business is to start with window treatments and then move into a full-line interior design company. This will include wallpaper to coordinate with fabrics, carpeting, flower arrangements, and a full range of accessories.

Kathy and Debbie can do just about anything in the decorating field. They particularly enjoy working with you and your ideas to create the special look you want. If you need ideas, they have a great number of books and a great wealth of knowledge to put to your decorating

use. -SH

Pizza anyone? Anita and Bill Westfall, new residents of Bloomingdale, have opened the first Perky's Pizza in the Brandon area. It is located on Bloomingdale Avenue near John Moore.

The Westfall's are formerly from Ohio and the decision to make the move and open a new business was a momentous one. Happily, business in the first few weeks has been even better than anticipated. Along with the great location, the Westfall's feel that the taste is a great factor in their early success. The Perky's franchise won the taste test in a Pulse 13 independent taste contest.

Free delivery within 1 1/2 miles is guaranteed within 30 minutes. As the drivers become better acquainted with the area, they hope to expand their guaranteed 30 minute range to 2 1/2 maybe even 3 miles.

Perky's is open everyday

except Thanksgiving and Christmas. However, you should plan to pick up your pizza early on Christmas Eve because they will be closing early.

You can expect to see more Perky's Pizza shops opening in the Brandon area. The Westfall's plan to open a total of five--with the next one going in the Seffner area. -SH

A new Eckerd Drug Store opened up in Bloomingdale Square on November 10, 1986. This store, and the one at King's Row which will stay open too, are open 9 to 9 Monday through Saturday and 9 to 6 on Sundays.

Bloomingdale Resident, Roger Pinsonneault, is the head Pharmacist at this new store. Roger is a 1982 graduate of The University of Connecticut and has worked at the King's Row Eckerd for 3 1/2 years.

Here are some of the services offered by Roger and
See MAY I, Page 30

TRAVEL AND AIRLINE CAREERS



Expert training in:

- AIRLINES
- TRAVEL AGENCIES
- CRUISE LINES

Completion of our program will qualify you for positions with AIRLINES, CRUISE LINES, TRAVEL AGENCIES and TOUR OPERATORS. Complete training will be provided at the Center using the most modern training equipment. Computer reservations training on TWA PARS II and Eastern Airlines Systemone. Either part-time or full-time positions available in this exciting industry.

Name _____
 Address _____
 City, State, Zip _____
 Telephone _____

238-6441

New Image Center

3918 E. HILLSBOROUGH AVE.
SUITE 100
TAMPA, FLORIDA 33610

'When a home is as fine as yours, it requires protection as fine as mine.'

With all the fine things you've acquired, it's important to have personalized insurance. I represent a broad range of companies so I can pick the one that's best for you.

PAUL CINDRICH
President
Bloomingdale Resident

BAIE

bay area insurance exchange inc.

118 Knights Ave. (813) 681-5667
Brandon, FL 33511

(Behind the Chamber of Commerce)

JANET CALLEJAS
Personal Lines Supervisor

- | | |
|-------------------|--------------|
| • HOMEOWNERS | • UMBRELLA |
| • AUTO | • LIABILITY |
| • LIFE AND HEALTH | • WATERCRAFT |

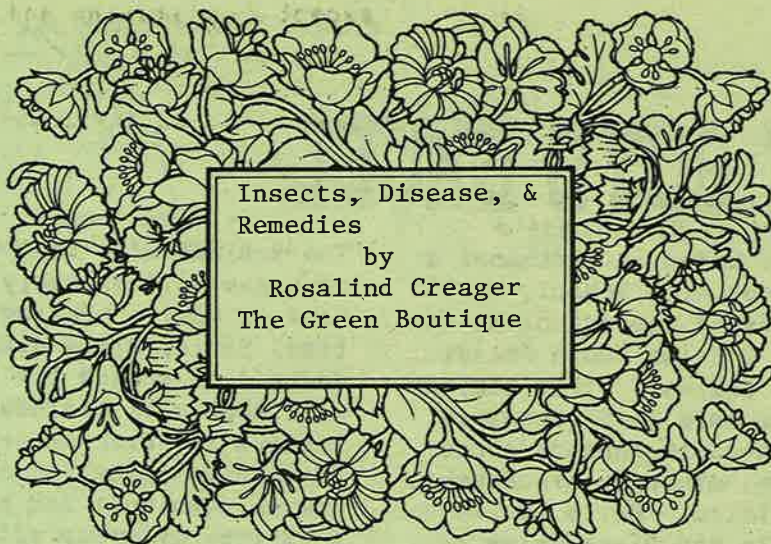
Commercial • Auto • Home

**Crum and Forster
Personal Insurance**

CFR policies are underwritten by the following insurance companies:
All West • Commonwealth Lloyd's • Crum & Forster • Industrial Underwriters
International • The North River • United States Fire • Westchester Fire

CRUM AND FORSTER AND YOUR INDEPENDENT AGENT

EXPERTS RECOMMENDING EXPERTS



Insects, Disease, &
Remedies
by
Rosalind Creager
The Green Boutique

Florida's mild climate and lack of extended periods of freezing weather, provide an environment for insects to thrive. Our warm, rainy summers encourage plant diseases to develop. Fortunately, once you have determined the cause of the problem, there are many effective chemicals available to control the pests or fungus diseases.

Insecticides are

chemicals which kill the insects that attack your plants. Spider mites, which are not true insects, must be controlled with a miticide, such as Kelthane. Fungal diseases are just that, a disease. Therefore, they must be controlled with a fungicide.

Chewed leaves, whitish curved lines on leaves and or flowers are all signs of the presence

of insects. Examine the undersides of leaves and crevices between stems and leaves for further signs of pests. Black circular spots ringed with yellow, or a silvery-white coating on leaves are results of fungus. Fungus diseases can cause plants to defoliate and prevent leaves from producing food for the plant.

Malathion and Diazinon are two chemicals which each kill a variety of pests. Keep these on hand to maintain good growing conditions for your plants. Beware though of using certain chemicals on your more sensitive house/patio plants. Sevin wettable powder, or an insecticidal soap, are safe and effective on houseplants. Many times regular spraying with a jet stream of water can dislodge and discourage quite a few pests.

THE BLOOMINGDALE GAZETTE
January 1987 -- Page 21

Also, keeping plants in a healthy condition can enable the plant to resist insect infestations. Allowing a houseplant to wilt severely between waterings breaks down the plant's natural ability to fight off bugs.

For your own safety and protection of our environment use pesticides wisely and follow directions to the letter. Mixing chemicals stronger than recommended may kill your plants rather than the pests.



A Warm Invitation Is Extended To You By The

Bloomingtondale Community Church

A BRETHERN CHURCH

YOU ARE ALWAYS WELCOME AT THESE SERVICES

SUNDAY

9:30 a.m. Sunday School
10:30 a.m. Morning Worship
6:00 p.m. Evening Worship

WEDNESDAY

7:30 p.m. Family Night Bible Study

1310 E. BLOOMINGDALE AVE.
VALRICO, FLORIDA 33594

CHARLES F. ANKNEY, PASTOR

Church phone 681-2790 Pastor's phone 604-5318

A HEARTY WELCOME

Awaits You



CITRUS - PALMS
LANDSCAPING

PAT & MIKE'S
HWY. 60 EAST BRANDON NURSERY

HIGHWAY 60 - 1/4 MILE EAST OF KINGSWAY ROAD
P.O. BOX 706, BRANDON, FLORIDA 33511



PHONE
(813) 689-2560

PLANT YOUR "SPRING BLOOMERS" NOW
Japanese Magnolia, Star Magnolia, Cassia, Crepe Myrtle

LARGE ASSORTMENT OF CITRUS TREES

FREE LANDSCAPE ESTIMATES

10% DISCOUNT ON ALL PALM TREES

with this ad through Jan 25th

MICHAEL O. ABDONEY, D.D.S., M.S.D.

BRUCE W. SCAROLA, D.D.S., M.S.D.

practice limited to orthodontics

413 w. robertson st
brandon, florida 33511
(813) 681-1300

4303 n. gomez ave
tampa, florida 33607
(813) 879-8142



Members American Association of Orthodontists



**BREAKFAST
EGG STRAVAGANZA**

MONDAY-FRIDAY 7AM-11AM

**Old World
Cheese Shop**
Family Restaurant

2 EGGS

Served With Your Choice Of:
2 Bacon Strips or Sausage
Home Fries or Potato Pancakes
and Toast

\$1.99

Dine-In Only
Located in Oak Park Plaza • Corner S. Kings & Lumsden
685-8762
Open daily 7 AM



Bryan Wilson won First Place in Fighting and Fourth Place in Forms at the Hall of Fame Championship on November 15, 1986. This Korean Karate State Championship is sponsored by the Florida Affiliation of Martial Arts Events. Bryan is the 9 year old son of Bill and Becky Wilson, residents of Bloomingdale East.

Bryan, who holds a Second Degree Red Belt, will be eligible to test for his Black Belt in three months. As a student at the Earl Harris School of Tae Kwon Do, Bryan trains approximately 10 hours per week in private lessons. He currently holds over 50 trophies won in forms and fighting competition.

BLOOMINGDALE BOYS EXCEL



Does he get hurt? "No, not really," according to his Mother, Becky Wilson. "The sport is really very safe. They must wear safety equipment at all time. And there is no full contact, just point fighting." (In Point Fighting the objective is to show that contact has been made, rather than hard knocks.)

As a well-supervised and very safe sport, the Wilson's have found that Karate has helped Bryan with confidence and self-discipline. As a family, they travel all over the state for various competitions.

Congratulations Bryan!
(Anyone for Karate Kid, Part 3?)
-SD

David Weiss, a sophomore at Brandon High School, will represent the school at the Hugh O'Brian Youth Foundation Seminar. This seminar, to be held in Orlando, is designed to enhance exceptional students' leadership abilities. David is the son of Jim and Diane Weiss of Bloomingdale East.

This foundation was established by actor Hugh O'Brian whose goal is to recognize those students who want to contribute positively to society. Mr. O'Brian is in charge of all funding which comes from the private sector. Through the 74 seminars held in the U.S. and Ontario, HOBY reaches out to some 10,100 students each year and all work is done by volunteers.

The seminar will last three days and will probably be held in April. During this time, David, along with students from around the state, will meet with business leaders and discuss problems in informal question and answer sessions and perform a variety of group activities most of which focus on leadership.

From the state seminar, one boy and one girl will be selected to go to the International Seminar in Denver next August. 180 students representing the world will spend one week interacting with one another and with the world's top leaders.

David was awarded this honor by Principal Linwood Nelson based on his exceptional leadership abilities.



BOB SANDS REALTY, INC.

1218 OAKFIELD DRIVE • BRANDON FL 33511

685-7726



MILITARY RELOCATION SPECIALISTS



CHERYL S. LEDFORD
REALTOR-ASSOCIATE
(813) 684-6511

BLOOMINGDALE RESIDENT

PLEASE CALL AND ASK ABOUT
MY 30-DAY MARKET PLAN

SPECIALIZING IN RESALE
HOMES IN OUR
NEIGHBORHOOD

RESIDENTIAL • ACREAGE • COMMERCIAL





PREVENTING MISSING CHILDREN

Between 1.3 and 1.8 million children are reported missing in the United States every year. Some run away, others are abducted by strangers or by parents. Each year between 20,000 and 50,000 cases of missing children remain unsolved by the police.

Parents can take positive actions to protect their children. They can teach them:

- That no adult has authority over them simply by virtue of size—that the children can say no.
- To know their home address, including the city and state, and phone number *with* area code.
- To use both pushbutton and dial phones for local and long distance calls.
- To memorize emergency phone numbers.
- To run to the nearest public place, store or police station, if they feel unsafe.
- To watch for enticements from strangers—like candy, gifts, money, or requests to help find a lost dog or cat.
- Not to get close to a car if a stranger calls out for directions or anything else. It is easy for a stranger to pull a child into a car.

- Not to open the door to strangers.
- Not to tell callers that mom or dad isn't home. Say they can't come to the phone and will call back.
- Not to walk alone if they can help it.
- To walk near the curb, on lighted streets at night, and against the traffic, and to travel known routes.
- To run away, scream and make lots of noise if they are followed or grabbed by a stranger. The last thing a dangerous stranger wants is a lot of attention.
- To go to the checkout counter and wait to be called on the loudspeaker if they are separated from you in a store.
- Never to go out to a parking lot alone.
- To tell parents immediately if anyone or any incident has made them feel uncomfortable.

Finally, parents should keep recent, clear photographs of their children in at least two different poses.

This McGruff tip brought to you
by the Bloomingdale Mobile Watch



BAIRD'S Custom Framing

WE FRAME ANYTHING!!!

You will find in our Gallery...
Fine art, photography, limited
edition prints, original oils,
posters, and needlework.

10% OFF WITH THIS AD

3218 Lithia Pinecrest Road
at Bloomingdale

681-7133

Tue - Fri 9 to 5

Dou's LOCKER ROOM SPORTS · PUB

(Across from Wal-Mart)

SUPER BOWL HEADQUARTERS

Enjoy the game on our 8FT TV

BUFFALO WINGS

HAMBURGERS

BEER, WINE

BRING THIS AD FOR

1/2 PRICE

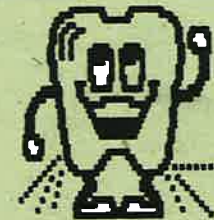
OFF of a meal when you
order one at equal or
less value.

EXPIRES 1-31-87

689-7045

HOURS...

M - Th 11 am - 11:30 pm
F - Sa 11 am - Midnight
Sun 1 pm - 10:00 pm



KEEP YOUR SMILE BRIGHT

It's the 1st Thing People Notice

Office Hours:
Monday-Friday
Evenings by Appointment
New Patients and Emergencies Welcome
Visa, Master Card, Healthcap

William K. Belton, Jr. D.M.D., P.A.

Family Dental Care
403 Vonderburg Dr.
Brandon, FL 33511



689-5098

Keep Your
Smile Bright!



The best in stores for you.



NOW OPEN

Publix Supermarket	Greg's Hallmark
Eckerd Drugs	Video Show
Wal-Mart	Mantrap Hair Salon
Beall's Department Store	Little Caesar's Pizza
Payless ShoeSource	

COMING SOON

Radio Shack	Quality Dental Center
Tender Touch Cleaners	Mailboxes Etc.

Plus many other fine stores

Located at the corner of Bloomingdale Avenue and Bell Shoals Road

FLEAS!

Margaret Wissman, D.V.M.
Suncoast Veterinary Clinic
Bloomingtondale Resident

with corresponding weakness and weight loss. They also transmit tapeworms to your pet.

Flea bites can be a source of infection to the skin. A single flea may produce a severe allergic reaction, resulting in intense itching. If fleas are allowed to accumulate, they will bite humans as well.

The female flea, after

One of the chief threats to the health and comfort of your pet is the common flea. The problem is year round in Florida. The flea's movement and constant biting keep your pet awake and scratching. Fleas suck blood and can cause anemia

ingesting a meal of your pet's blood, deposits 400-500 eggs in bedding, furniture, rugs and grass. These develop into adults in about one to six months.

REMOVING FLEAS FROM THE PET:

1. Dip once weekly with a good quality dip. Some dips are dangerous to cats. Read the label.

2. Use a good quality flea spray every 1-3 days (sparingly to kill any fleas present).

3. Bathe before dipping in baby shampoo, Ivory liquid, or a medicated shampoo as directed by your vet.

4. THE FLEA PRODUCTS I RECOMMEND ARE VETERINARY PRESCRIPTION ONLY.

REMOVING FLEAS FROM THE HOUSE:

1. Fumigate the house using a good quality fogger every 3-6 weeks, or use a professional exterminator. There are products available that kill both adult and pre-adult fleas.

2. Spray a good quality flea spray around baseboards, in corners, and on carpets. First test rug for colorfastness.

3. Vacuum thoroughly every 4-5 days. Place mothballs in your vacuum bag (dead fleas have live eggs).

REMOVING FLEAS FROM THE YARD:

1. Every third week use a hose sprayer with ISOTOX, DURSABAN, DIAZINON, or MALATHION according to directions on product label (available at garden store) or

2. Use a professional exterminator.

For the best results the pet, the house, and the yard must be done on the same day.

TREAT THE CAR if your pet travels in the car.

Fleas spend only short periods on their host; the major effort for flea control must be directed to the premises!

FREE! PACKAGE PICK-UP

BLOOMINGDALE
RESIDENTS ONLY

CALL FOR
DETAILS



Providence Square
1939 W. Brandon Blvd.
Brandon, FL 33511
(813) 684-MAIL
(813) 684-6245

Your Full Service Mail Center

Thank you for your patronage during the holidays.
Donna and Vince

GENERAL
DENTISTRY

SCOTT Q. BRYINGTON, D.D.S.

Complete Dental Care
Adults and Children

Cosmetic, Restorative &
Preventive Care

New Patients & Emergencies

Saturday Appts. Available

Insurance Welcome



681-2529

3413 S. KINGS AVE.
BRANDON

Kings at Bloomingtondale

BLOOMINGDALE RESIDENT



GULF COAST
CUSTOM WOOD • Caribbean Pine Pressure Treated

FENCE

Residential • Commercial

- Lease Fence
- Vinyl & Galvanized Chain Link
- Cement Walls & Columns
- Free Estimates

621-5544

Licensed • Bonded • Insured

11303 U.S. HWY. 92 E. • SEFFNER



Long Lasting Aluminum—
Maintenance Free!

ALUMINUM FENCING

BHA From Page 1

sidewalks on Bell Shoals. And they did!

...In October the BHA asked the residents of Bloomingdale Oaks if they would like to come under our auspices. They responded with a petition of over 70% signing to seek membership in the BHA. It will come to a vote in January.

...The BHA met upon several occasions with the Brandon Running Association in November to discuss concerns about the Bloomingdale Marathon.

...October 4 the dues statement went out and by October 24, the BHA already had 736 active members.

...In November, the Fire and Disaster Fund was available for a family in need in the East.

...The BHA became members in good standing of the President's Roundtable.

...At the November General Membership meeting, the Board agreed to pursue the following: A bronze plaque for Paragon; the duck

problem on Bell Shoals; a crosswalk from East to West; a clean-up Bloomingdale day; the widening of Bloomingdale Avenue; and the establishment of a STD liaison with the BHA Board.

...The day after Thanksgiving marked our first try at selling Christmas trees. We learned a lot for next year.

...December 20 brought Santa Claus from the North Pole for the youngsters.

...One time every month, and sometimes twice, the BHA Board met.

...And throughout the year, the Gazette (published by the BHA) has continued to provide information for and about Bloomingdale.

In 1983, Past-President

Brenda Manning had this to say about the BHA:

"The BHA is an active, growing organization that needs the support of residents to improve our community. It is the forum for expressing collective opinions and desires to the developer, builders, residents in the community and to county and state legislators. It is as effective as its members and residents of the community want it to be.

"Should you be a member of the BHA? Emphatically--YES! Without the BHA the community has no collective voice to be heard."

Are you one of those who has "misplaced" their dues statement? Or maybe you just moved in. Take a moment now to fill out the form and a check for \$5. It's worth it! ■

MEMBERSHIP APPLICATION

THE BLOOMINGDALE HOMEOWNERS ASSOCIATION, INC.

Name.....

Address.....

City.....

Phone.....

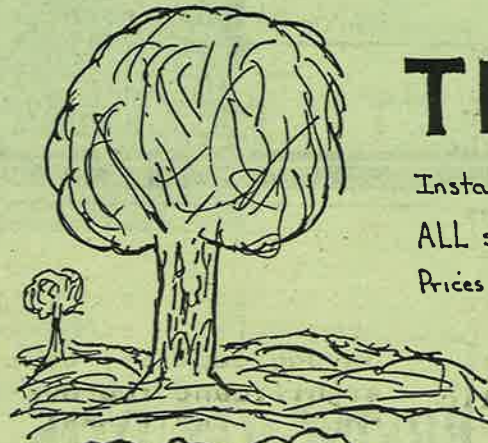
Annual Membership \$ 5.00

Mail to: B.H.A.
P.O. Box 918
Brandon, Fl. 33511

DON'T LOOSE YOUR CARDS!

\$1 TO REPLACE YOUR MEMBERSHIP CARD? Yes. At the General Membership meeting someone asked "Why are you putting such a high value on them?" Because they are, and will be, worth money towards discounts on products here in Bloomingdale. We hope to bring you advertisers in the future that advertise with the Gazette that will offer discounts to BHA members. ALSO...right now, you can get FREE classified ads in the Gazette with your BHA card. But not if you loose it.

blg blg blg blg blg blg blg blg blg blg blg blg blg blg blg



TREES

Installed - in your yard.
ALL sizes - \$30⁰⁰ and up
Prices hard to beat!

Oaks
Elms
Pines

Much More!
upon availability



We cut grass, too!

ALSO
fertilizing
hedge trimming
mulching
yard clean-up
weeding

Call: 684-0650

David Walker - Owner

Bloomingdale
Resident

LETTERS, From Page 3
He had indicated that he would rebuild Causeway and 78th Street if he was granted the change. The staff, technical committee and the citizens advisory committee to the MPO (the county transportation agency) all recommended denial of the change. Presently the developer is offering "alternative plans."

We are at a time where the right transportation decisions can assure us easy access to everything or the wrong decisions can guarantee us bumper to bumper traffic. We don't have to develop a Dale Mabry traffic snarl. I have dealt with the transportation experts. Some of them are good and some are horribly bad. Once they are paid, they are gone. We, on the other hand, have a personal stake in the transportation future of the area.

I urge you to join with me and my people in actively fighting any attempt to degrade the transportation facilities of our area. As is too common now, government has not made the information available and appears to be reluctant to set definite dates for public hearings. I encourage you to contact the

county commission and insist on information and adequate advance notice of public hearings.

Carole Henning
Riverview, Florida

* * * * *

To the Bloomingdale Gazette:

In transportation planning for this county, the document that will decide the quality of our driving experience is the Tampa Urban Area Transportation Study 2010 (TUATS 2010). This study sets up the network of roads that must be in place in order to accommodate the anticipated growth of this county.

What does the study show for our area? Unfortunately, even with all the roads in place, there will be a deterioration of traffic flow. To the south along I-75, traffic will be bumper to bumper most of the time just as in the worst urban centers today. As a result, US 301 will be beyond capacity from I-75 overflow. East/West capacity of existing roads, like Bloomingdale and Lumsden, will be strained beyond capacity despite significant improvements. Additional East/West roads will be

needed. The intersections of Bloomingdale/US 301 will be a cloverleaf interchange. The traffic situation for the drivers of south Brandon including Bloomingdale will be tied to the Crosstown Expressway. If it is positioned to accommodate the traffic effectively, then it not only would make life in the year 2000 more pleasant, but it would enhance the residential property values.

The decisions are being made now. The future is being set now. I have some recommendations that could increase the probability of obtaining the best possible traffic planning for the Bloomingdale area.

First, stay on top of the development of the Crosstown Expressway. I believe that it is to your advantage to have the expressway come south into Bloomingdale. Development of the area as residential, four units per acre, is a virtual certainty. Having the best roads at your doorstep would be a most prudent move.

Second, monitor the TUATS 2010 to assure no changes are made that would negatively impact your traffic flow or

access.

And lastly, begin insisting on traffic performance guidelines at all rezonings. Under current regulations, the actual build out of developments is regulated by such rules as "when the road is widened or 3 years" whichever comes first. By insisting on performance guidelines, it wouldn't matter if the county got bogged down in road building, there would be no development allowed if the road could not handle the additional load. A level "D" would be fair to all. Also consider making use of the many knowledgeable people, civic activists who know the score and who can tell you the truth. The truth can be difficult to obtain through government channels.

Carole Henning
Riverview, Florida

* * *

PERSON TO PERSON:

To the individual who stole all our big beautiful Christmas lights so we can never enjoy them again -- we feel you must have needed them more than us, so we wish you a very Merry Christmas. Mr. and Mrs. R., Bloomingdale West

Bloomingdale

ANIMAL HOSPITAL

Dr. G. Brooks Buck, DVM

SURGERY • MEDICINE • GROOMING • BATH & DIP
BOARDING • PET SUPPLIES • EMERGENCY SERVICE

Open:
Mon.-Fri. 7:30-6:00
Sat. 7:30-1:00

681-6612

3404 LITHIA PINECREST RD. • VALRICO

VALUABLE COUPON

GROOMING 40% OFF
with this coupon

FIRST VISIT ONLY

EXPIRES 2-6-87

MAILBOX REPLACED

Gerry Dompur was impressed and he wanted us to know it. In Bloomingdale Oaks some boys were knocking down mailboxes--but they got caught. Mr. Dompur was impressed with the parent of the boy involved because of the consideration shown to rectify the damage. The father made the boy return twice to Mr. Dompur's home until he could apologize in person and then the boy was made to replace the mailbox. Mr. Dompur said that he hasn't seen discipline like that in a long time and he wanted us to know. (Hopefully, this boy learned his lesson and won't destroy the property of others again.)

THE NEED FOR A WILL AND TRUST

Jim Wysolmierski, CLU
Bloomingdale Resident

Intestate distribution means a person dies without a Will. Property owned by the decedent would then be distributed by Florida statute on descent and distribution.

Florida law provides that a surviving spouse receives the first \$20,000 of assets, plus one-half of the balance of the estate. The remaining balance passes to the children equally. If there is no surviving spouse, the entire estate passes to the children equally. Similarly, if there are no surviving children, then the estate passes to the surviving spouse. If there are no surviving children or spouse, then the estate passes to the parents of the decedent.

While the law tries to be fair, intestate distribution may cause many legal and

financial problems for a family. First and foremost, is that the state decides how property is to be distributed. It may not be the way a decedent would have wanted.

Second, children receive their inheritance at age 18. At that age do they have the financial maturity to handle money?

Third, if minor children survive a decedent, the court is going to appoint a guardian to assume legal responsibility for the raising of the child, and an administrator to invest and control the child's property. Are these individuals the people you would want to handle these important jobs?

Fourth, intestate distribution requires probate. This means that property passes through the court and is supervised by a judge. This usually increases the costs in settling an estate and can be time-consuming.

Every one of the problems caused by intestate distribution can be solved by a Will or trust. Every parent and estate owner, regardless of the size of the estate,

should have a Will. Through the use of a Will and trust, an individual decides how his estate is to be distributed, who will raise his children, and who will control the child's assets.

If an individual has an estate worth more than \$600,000, estate taxes should be considered. The estate tax is a transfer tax on the passage of property by a decedent to anyone other than a spouse. Husbands and wives are not taxed on the property they receive from the deceased spouse. Property worth more than \$600,000 passing to children, can be taxed at significantly high rates. Proper estate planning can reduce this tax.

To have a Will or trust drafted, you should contact a lawyer. A lawyer will take into consideration your personal situation and make sure the document is signed and witnessed, according to the formalities of the law.

To receive more general information about Wills and trusts, contact the County Bar Association, a local bank and trust company, or the author.



BERNIE'S PEST PATROL

1420 LONGWOOD LOOP
TAMPA, FLORIDA 33619
PHONE 626-8447

"Bernie's is Better"

PROFESSIONAL SERVICE
AT AN AFFORDABLE PRICE

NO CONTRACT!

CANCEL SERVICE ANYTIME!

SEVEN YEARS EXPERIENCE

LICENSED, INSURED & CERTIFIED

LOW INITIAL CHARGE!

NO & LOW ODOR SPRAYING, TOO!

- * MONTHLY PEST CONTROL
- * FLEA CONTROL
- * TERMITE CONTROL
- * FIRE ANT CONTROL
- * INSPECTION REPORTS

MENTION THIS AD!

CALL: 626-8447

Grable

Plumbing Co.

SPECIALIZING IN

FAST SERVICE

7 DAY - NO TRAVEL CHARGE - 24 HR

Residential - Commercial

INSTA-HOT DISPENSERS - LAUNDRY TUBS
WATER HEATERS • DISPOSERS • S.S. SINKS
ELECTRIC SEWER & DRAIN CLEANING



Call 685-3636



STATE CERTIFIED
MASTER PLUMBER
#CFC 032591
INSURED



SAVE THIS COUPON FOR
\$500 OFF PLUS \$500 OFF I.S.E.
ANY CALL DISPOSER

Coupon expires June 1, 1987

WIDENING, From Page 5
article saying Commissioner Selvey said he would "try to prevent a delay in plans to widen the road." The article also stated that "he would ask commissioners...to have the road widened as far east as Bell Shoals Road." He also stated "the time to widen Bloomingdale, where an increasing number of businesses are opening, is now. Later a road project could pose hardships to some establishments."

BHA Director Mike Kelly, a resident on Bloomingfield Drive, is especially concerned that the widening of Bloomingdale Avenue take place soon. Instead of using Bloomingdale Avenue, which is overcrowded, cars are using Bloomingfield Drive as a shortcut through Bloomingdale West to avoid the traffic congestion. There have been numerous complaints of speeding on Bloomingfield Drive plus there have been two serious accidents recently within three weeks of each other in front of resident's homes. Director Kelly is concerned that if

the widening of Bloomingdale isn't completed quickly, the short-cutters might severely injure someone living on Bloomingfield Drive. (Mike Kelly has taken on the duty of Task Force Chairman to try to find a resolution to the speeding problems on Bloomingfield Dr.)

Another Director, Steve Briggs, says it's a dual-edge sword. As a Director he definitely wants the widening of Bloomingdale to take place as quickly as possible, but as a business owner on Bloomingdale Avenue, he's concerned about the effect it will have on his commercial property. Director Briggs stated that in a conversation he had with Commissioner Selvey recently, he suggested that the widening process begin at the east end of Bloomingdale and proceed westward. Thereby, widening the areas of greatest use first.

At the General Membership Meeting on January 15, we'll update any information we have on the widening of Bloomingdale Avenue. ■



Suncoast Veterinary Clinic

MICHAEL S. MITCHEL, D.V.M.
MARGARET WISSMAN, D.V.M.

PHONE: 689-1228

HOSPITAL HOURS: Monday: 8:00 a.m. - Noon; 1:30 p.m. - 9:00 p.m.
Tues., Thurs., Fri.: 8:00 a.m. - Noon; 1:30 p.m. - 6:30 p.m.
Doctors' Hours: Wednesday: 5:00 p.m. - 9:00 p.m. Only
by Appointment: Saturday: 8:00 a.m. - Noon

BOARDING, BATHING, VACCINATIONS
A COMPLETE MEDICAL, SURGICAL
& DIAGNOSTIC FACILITY
FOR DOGS, CATS, BIRDS & EXOTICS

Conveniently Located to Brandon at 101 S. St. Cloud Ave.,
Valrico — 1/2 Block South of Rt. 60



BLOOMINGDALE RESIDENT



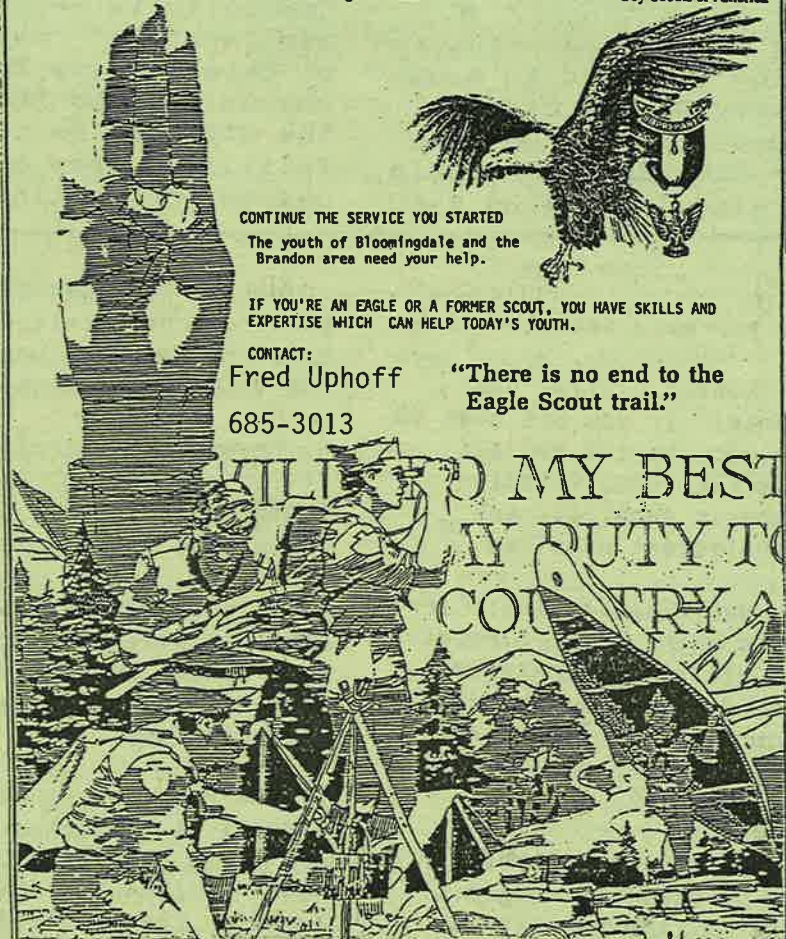
ADVERTISING MANAGER WANTED: The Bloomingdale Gazette is looking for someone to take charge of the Advertising Department beginning in February. This is a paid position which requires approximately 45 hours per month. Requirements of the job are a cheerful disposition, good telephone personality, and reliable transportation. Resumes should be submitted no later than January 31 to: Susan L. DeLuca, Editor, The Bloomingdale Gazette, Inc., P. O. Box 918, Brandon, FL 33511.

THIS POSITION IS OPEN TO BLOOMINGDALE RESIDENTS ONLY.

THE BLOOMINGDALE GAZETTE

Gulf Ridge Council

Boy Scouts of America



CONTINUE THE SERVICE YOU STARTED
The youth of Bloomingdale and the
Brandon area need your help.

IF YOU'RE AN EAGLE OR A FORMER SCOUT, YOU HAVE SKILLS AND
EXPERTISE WHICH CAN HELP TODAY'S YOUTH.

CONTACT:

Fred Uphoff

"There is no end to the
Eagle Scout trail."

685-3013

WILL DO MY BEST
MY DUTY TO
COUNTRY

Presented as a public service by The Bloomingdale Gazette

S. T. D. NEWS



GROUND-BREAKING CEREMONY AT CHURCH

Bloomingtondale Community Church (1310 Bloomingtondale Avenue) held a ground-breaking ceremony for the new Christian Education Building on Sunday, December 29. Pastor Charles F. Ankney, Christian Wurzel, the General Contractor, and others watched as the congregation's oldest living member, Evan Music, was given the privilege of turning over the first shovel of sod.

The current building is being expanded to house Sunday School classrooms and a large area for "Children's Worship Service." This 30 x 60

The resumes have been read, the interviews accomplished and the decision made. Mr. Lynn T. Wagner, a resident of Bloomingtondale East, is the new Property Manager for the Special Taxing District.

Lynn was born in Harrisburg, Pennsylvania, where he graduated from Hummelstown High School in 1959. After serving in the United States Navy for three years, he matriculated to the Pennsylvania State University where

he graduated with a Bachelor of Science Degree in 1967. Commissioned an Ensign in the Navy upon graduation, Lynn attended the Armed Forces Intelligence Training Center and entered the fleet as an intelligence officer assigned to various West Coast A-6 (Intruder) squadrons and Staffs. It was while stationed at NAS Whidbey Island in 1979 that Lynn first gained experience in property management, as he was President of the Castil-

lian Hills Homeowners Association. Lynn's last assignments were as Director of Intelligence for the Iceland Defense Force and Naval Space Command, and most recently as a Special Project Officer at the US Central Command.

Lynn, who will retire in February after twenty years of service, is married to Nancy. They have two children: Damon, who is a student at Eisenhower Junior High School, and Meridith, who is a student at Buckhorn Elementary. Nancy is a teacher at Eisenhower Junior High. Lynn's plans for retirement, besides that of the STD Property Manager, include pursuing a Master's Degree at USF, some fishing, completing numerous "Honey Do's," and working at various repair and landscaping jobs in the neighborhood.

Lynn's goal along with that of the STD Board, is to continue to develop Bloomingtondale and keep it as "the" place to live in Tampa. ■

ft addition will also serve as a "Fellowship Room."

Pastor Ankney said "I had the most wonderful Christmas present--we received our building permit on Christmas Eve."

Bloomingtondale Community Church is part of the denomination known as "The Brethren Church." They are affiliated with Ashland College and Ashland Seminary in Ohio. Pastor Ankney said they are named "Community Church" because "we want to be a part of and serve the Community in which we are located." As part of this service to the community, the BHA and the STD use the church facilities free of charge for meetings.

With the anticipated growth in the area, the Pastor advised that the church will be faced with the necessity of building a new sanctuary in front of the existing buildings. Tentative plans are to build a 60 x 80 ft sanctuary facing Bloomingtondale Avenue in 1988.

The pastor extends an invitation to all who do not have a church home to come and visit.

MAY I..., From Page 20

the pharmacy department:

1. Senior Citizen Discounts: If you are over 60 you receive 10% off all prescriptions, vitamins, diabetic supplies, and convalescent supplies.

2. Baby Bundle Club: Infants under 4 years receive 10% off all prescriptions, Eckerd-brand baby products, vaporizers, humidifiers, rubber goods, and feeding accessories.

3. Diabeticare Club: If you purchase six vials of insulin, the seventh is free. Roger has been train-

ed on the new Accu-Chek II blood-glucose monitoring kit. He can show you how to use this home system.

4. Physician Referrals: If you are new to the area, Roger has a list of physicians that he recommends.

Also, just for the asking, Eckerd's will give you a free coupon booklet worth \$1 each off your next seven prescriptions.

If you have your prescription(s) at the other Eckerd's, no problem. Call Roger at 684-0707 and he'll transfer them to this new store.

Allstate®

INSURANCE AT BLOOMINGDALE

611 E. Bloomingtondale Avenue
Next to Bloomingtondale Plaza

681-5303

DON BUA



STEVE BRIGGS
BLOOMINGDALE RESIDENT

AUTO • HOME • LIFE • BUSINESS • GROUP HEALTH
Allstate Insurance Company
Allstate Life Insurance Company

*Flexible Premium Annuities

REMEMBER: "You're In Good Hands With Allstate"

CLASSIFIED

THE BLOOMINGDALE GAZETTE
January 1987 -- Page 31

NEWS MANAGER WANTED: This newspaper is looking for a Bloomingdale Resident who has newspaper experience and/or a degree in journalism to run our news department. This is a paid position with VERY flexible hours. The person hired must be self-motivated and responsible with the ability to follow through without supervision. If you are interested, please submit your resume with salary requirements to THE BLOOMINGDALE GAZETTE, INC., Attention: Susan DeLuca, Editor -- P. O. Box 918, Brandon 33511.

FOR SALE: Early American bunk beds with mattresses, \$50. 681-5819.

HAND-PAINTED WALL MURALS: Will take your ideas and translate them into colorful murals and pictures for one wall or all four. I paint everything from fantasy pictures in children's rooms to professional designs in stores. Call Kathy Watkins at 684-0267, a Bloomingdale Resident.

\$100,000 LIFE INSURANCE: For male, age 35, nonsmoker, only \$110! Smoker rates also available. At companies. 681-9384 anytime for quotes.

GOLDEN RETRIEVER PUPPIES: AKC registered. Sire & Dam on premises. Do yourself a favor and DON'T buy until you've seen these puppies. They can't be equaled! 689-8572.

TUPPERWARE: Order now from a Bloomingdale Resident for single items or have a PARTY! Call Phyllis Jerpi at 685-9007.

DUPLEXES FOR RENT: In Bloomingdale. \$375 per month. Brand new with two bedrooms and all appliances. Call Steve Briggs at 681-5303.

A BRANDON BLVD ADDRESS FOR YOUR BUSINESS FOR ONLY \$6 PER MONTH! -- Call 684-MAIL(6245), Bloomingdale residents.

LOST: Mobile Watch sign in Bloomingdale East. PLEASE call 689-8913 or 681-9026 if you find it.

STEREO FOR SALE: Sanyo 33w receiver \$75. Hitachi turntable \$50. Fisher woofer and tweeter speakers \$100. Stereo stand \$25. All \$200. 685-5376.

ANWAY: Personal care essentials, home and auto-care products, health and fitness supplies, cosmetics. Call Claudine Boucher, 684-3546. Bloomingdale Resident.

LAWNMOWER BLADES SHARPENED: A sharper blade means a healthier lawn and easier mowing job. Ted Fliegel, 3907 Butternut Court (West). 689-9373.

FURNITURE FOR SALE: Sofa and chair with ottoman \$175. Dinette set \$150. Piano, 2 years old, excellent condition \$1750. 681-4751.

TYPING AND MORE: Resumes, word processing, custom typing, mail lists and labels. Call Simplified Services at 684-4897.

GUITAR INSTRUCTOR WANTED: Reasonable price for a beginner. Call Jason at 681-6688.

DOTTIE D'S CAKES: Cakes for all occasions created by a Bloomingdale specialist. Birthdays, weddings, Thanksgiving, Christmas, etc. Call Dottie at 685-4818.

ARE YOU NEW TO THE GREATER BRANDON AREA? "Welcome Neighbor" welcomes newcomers with a valuable packet full of local information, gifts & coupons. Call us today for your FREE visit (we don't sell anything). Phone Pam at 681-6853 or 645-3153. "Welcome Neighbor" is a member of the Greater Brandon Chamber of Commerce.

STAINED GLASS: Stained glass and leaded glass panels and windows. Custom made and installed. Call after 6 p.m. Tom Wood, 681-1884.

VCR SET-UP! To attach your VCR to second VCR, antenna, or cable--watch one channel, record another--call Jim Frey, 681-3739.

FREE GUINEA PIGS: Peanut Butter and Zorro need a good home. 1 year olds with large cage. They don't bite. Call 684-6511.

CLASSIFIEDS ARE FREE FOR BHA MEMBERS! Call 681-2051 to place an ad.

CLASSIFIED COST: 20 words for \$2.

YARDWORK

Ryan Beard, 11
689-4302
Alex Blanchard, 17
685-8028
Matt Cunningham, 16
685-5255
John Heyman, 12
681-9407
Christopher Kelley, 16
684-5711

Brian Brundage, 15
Stacy Brundage, 12
681-8887
Krista Butler, 13
681-5367
Julie Cook, 15
681-5465
Peter Cunningham, 13
685-5255
Jennifer Curry, 1
681-4746
Katie Fannin, 12
685-5290

BABYSITTERS

Kathy Handlin, 14
681-4915
Heather Harker, 13
681-4743
Donna Jacobson, 15
684-5206
Brandi Vinson, 11
681-4885
Heather Wood, 13
Michelle Wood, 12
681-1884
Cathy Young, 10 1/2
684-0540
Michelle Jernigan, 15
685-4150
Jennifer Kelley, 18
684-5711
Lisa Moore, 18
685-3605
Shawn Purtell, 14
684-3028
Kimberlee Ramsay, 16
681-3329
Robyn St. John, 15
Heather St. John, 16
685-4638

The Bloomingdale Gazette

Vol. IX No. 1

Published by The Bloomingdale Homeowners Association

January 1987

LOOK WHAT WE'VE DONE TOGETHER!

January is the time when many people pause to reflect over the year just passed. So let's do the same.

From December to December, your BHA Board has accomplished the following:

...On December 18, after almost one full year of very hard work, the Special Taxing District became law.

...After 3 months of meetings and work, a special meeting was called by the BHA on March 18 and a vote by residents indicated that Parks East and West should be deeded to the County Parks Department.

...In March, The Bloomingdale Gazette became a tabloid-form newspaper.

...On March 18 the BHA changed its meetings to five times per year.

...In April, the BHA drew up deed restrictions for the Parks Department to protect the residents living alongside the parks.

...A final accounting was made, and the remaining donated sum of \$815.49 was turned over

to the STD for start-up costs in April.

...In May we started to question the illegal dumping occurring in Bloomingdale. With coordinated efforts by the residents of Bloomingdale Oaks, investigative journalism, and active Board members, the County was fined \$10,000 for illegal dumping.

...May saw the Gazette become incorporated with its stock wholly owned by the BHA.

...May 2 Criterion said they were no longer going to maintain the West nor enforce deed restrictions. The BHA took up the task of sending out violation warning letters.

...In June, Bloomingdale Oaks asked for the BHA's help in seeking odor relief from the waste water treatment plant, and we became involved. We sponsored meetings with Commissioner Selvey and placed numerous telephone calls and articles. Finally, odor relief came in October.

...Hot Air Balloons became the central theme as a mini-balloon rally, sponsored by

Bloomingdale Realty, Allstate, and the BHA, took place on July 4 in Park East. The Bloomingdale 5k Fun Run saw residents racing on Nature's Way; while the kids marched in the Brandon Parade with their decorated bikes.

...Funding by the BHA and a front-page article in the July/August Gazette stopped the Mobile Watch from disbanding due to lack of volunteers. This effort brought the Watch 65+ new members.

...The BHA reported the removal of the wall on Bell Shoals by Gulf Land Homes to the Zoning Enforcement Board. This is still pending.

...The Newcomers and Oldtimers Picnic was a huge success in September with over 500 residents participating.

...Working for the BHA, Chris Pheils secured the designation of one lighting district in September for all of Bloomingdale to ensure lighting as new residents move in.

...In October, the BHA asked Paragon to put in

BHA Continued Page 26

INSIDE -

BHA Makes
Donation.....Page 3

General Membership
Meeting.....Page 5

Bloomingdale Avenue
Widening.....Page 5

Bloomingdale Oaks
Submits Petition
.....Page 11

Advertising Rates
and Terms....Page 16

STD Hires Property
Manager.....Page 30

The Bloomingdale Gazette
P. O. Box 918
Brandon, FL 33511