

# The Bloomingdale Gazette

Vol. IX No. 8

Published by the Bloomingdale Homeowner's Association, Inc.

July 1987

## Dear County Commissioners:

You, the Board of County Commissioners, have recently expressed your concern about citizen dissatisfaction regarding services provided by the County. We applaud your acknowledgement of these problems and your initiative in instructing the County Administrator to investigate the cause of this dissatisfaction. The Bloomingdale Homeowner's Association, representing a major development in South Brandon, has also experienced frustration in regards to the delivery of county services. In many of our attempts to work with you on a professional basis to resolve local problems, we have met with less than satisfactory results. On rare occasions we have achieved some semblance of success.

The County's plan for widening and extending Bloomingdale Avenue is a classic example of our dissatisfaction and frustration when attempting to work with the County.

We are getting the short end of the stick (or the narrow end of the road, if you prefer). You've granted us the widening of Bloomingdale Avenue from 301 to John Moore. But you've ignored the area of growth--from John Moore to Lithia Pinecrest. 301 to John Moore is a lot of open area. John Moore to Lithia Pinecrest is a lot of people--with a lot more coming. Why is Faulkenburg Road taking precedence over the widening of Bloomingdale Avenue? You are preparing for future growth around the I-75 corridor, but you've ignored the people that are here now. We've all heard the statistics that Florida is one of the fastest growing States in the Union, that Tampa Bay is one of the fastest growing areas in the State, and that Brandon is one of the fastest growing communities in Tampa Bay. That makes us the "hot spot" of the country. And you've made us even hotter. You have approved multiple areas of zoning without taking a look at the overall impact on what you are doing to the area and the strain you are putting on the transportation network, water, sewer, and everything that supports a civilized community. Have you turned on the water out here lately? Sometimes the pressure is so low that it barely trickles out of the tap. Yes, everyone is watering their grass at the same time. But what is going to happen when the number of people double and triple in five years due to population growth and zoning approvals but the water supply remains the same?

We aren't against growth, but it must be controlled. Even the State's comprehensive planning legislation says you have to do this. You can't keep on agreeing to zoning changes that allow for more growth and just assume that because we are out in the country that the growth will just overflow into the empty areas. We may be out in the country, but we aren't out in the sticks. Everytime you approve one little store, or OK another developer with his idea of a small subdivision, you are putting additional stress on the already strained infrastructures of roads, sewer, and water.

Have you driven down Bloomingdale Avenue lately? Most people try to avoid it. The road is bumper to bumper at rush-hour. It takes 20 minutes

to travel four miles from Bell Shoals Road to 301. We all know that Bloomingdale Avenue from John Moore to Lithia Pinecrest has the greatest amount of traffic, has two new schools coming in, and has a lot of new developments along it. We also know that you intend to extend Bloomingdale Avenue all the way through and turn it into another road like Hwy 60. But the widening of the most serious area of congestion doesn't even appear on any plans for the next five years. You have OK'd growth out here such that there is a 23% increase in the traffic every 6 months (as proven by figures provided by your county staff). Before five years is up, there will be a possibility of 60,000 cars trying to use the intersection of Bell Shoals and Bloomingdale Avenue. And the widening process won't even be on the drawing boards yet.

How about this as an idea...

Why not allocate today the \$150,000 it will take to design the widening process from John Moore to Lithia Pinecrest? This way if some extra money comes along from impact fees or the state gives us some funds, your construction crew can just keep going when they get to the corner of John Moore and Bloomingdale Avenue and continue the widening all the way down to Lithia Pinecrest. According to your own head engineer, Joe Rossie, this is a highly feasible plan of action. But if you don't start the design now while you're designing and developing the rest, there will be a minimum of a two-year delay after the widening to John Moore is completed.

You've heard the expression "PLAN Ahead." You can create a model of planning ahead here in South Brandon by bringing all the infrastructures in line with growth. You have the opportunity to build a model of growth, development, and community appreciation here in South Brandon that can put the citizen's frustrations at rest.

We are not the type of community that sits back and says "You fix it. We don't care how--just do it." We are a community of people that care very much about what goes on around us and how it's accomplished. We WANT to be involved in the decision-making processes that are going to effect our lives and the future of our children. We WANT to help. But...the hitch is you have to let us know how we can help and what we can do as a community to assist you in finding the right answers.

Got a minute to spare? In the next couple of weeks you'll receive an invitation from us to meet with the residents of Bloomingdale and become familiar with our area and our concerns. Let us show you exactly what we mean when we say "there's a problem out here."

Sincerely,  
Board of Directors  
Bloomingdale Homeowner's Association, Inc.



# Community Directory

## The Bloomingdale Gazette, Inc.

P. O. Box 918  
Brandon, Florida 33511  
Telephone (813) 681-2051  
(Monday to Friday, 9 a.m. to 4 p.m.)

DEADLINE: the 20th of the month.

Published 14 times per year by the:

**Bloomingdale Homeowner's Association, Inc.**

Established November 1979.

|                                 |       |
|---------------------------------|-------|
| Resident Door-Knob Distribution | 2,084 |
| Mail, Free, and Subscriptions   | 156   |
| Total Distribution a/o 6/28     | 2,240 |

|                                  |       |
|----------------------------------|-------|
| Rent-A-Kjd Distribution a/o 6/28 | 2,190 |
|----------------------------------|-------|

Delivered FREE to all homes and businesses in Bloomingdale.

### Editor

Susan L. DeLuca

### Advertising Manager

Sharon Minor

### Graphics Editor

Kathy Watkins

### Circulation

Swifty Watkins • Kathy Watkins

### Reporters

Jackie Tuckey • Cheryl Ledford

### Printer

The Bay Area Money Saver, 223-9711  
Kent Roberts and Ron Evans,  
Bloomingdale Residents

### Legal Consultant

John P. Holsonback, Attorney  
of the firm of Melendi, Campbell,  
Gibbons, & Holsonback  
Bloomingdale Resident

## BLOOMINGDALE HOMEOWNERS ASSOCIATION, INC.

P. O. Box 918 -- Brandon, Florida 33511

### Board of Directors

|                       |                    |          |
|-----------------------|--------------------|----------|
| <b>President</b>      | Henry A. Brosnaham | 681-7396 |
| <b>Vice President</b> | Jim Weiss          | 689-0254 |
| <b>Treasurer</b>      | Janet Holzman      | 681-2548 |
| <b>Secretary</b>      | Susan L. DeLuca    | 681-2051 |
| <b>Directors</b>      | Bill Armstrong     | 684-5809 |
|                       | George Ball        | 689-8913 |
|                       | Steve Briggs       | 681-5303 |
|                       | Ted A. Keiser      | 689-4842 |
|                       | Michael S. Kelly   | 681-7338 |
|                       | Joe Liguori        | 681-9655 |
|                       | Ron Thompson       | 685-5028 |
|                       | Jerry Underwood    | 684-5413 |
| <b>Alternates</b>     | Mark Chapman       | 689-2725 |

### STANDING COMMITTEES

**Park Committee**  
Chairman, Russ Thompson, 681-2957

**Lighting Districts**  
Chairman, Jerry Underwood, 684-5413

**Fire and Disaster Fund**  
Chairman, BHA Treasurer

## BLOOMINGDALE MOBILE WATCH

c/o The Mail Room  
1939 W. Brandon Blvd.  
Brandon, Florida 33511

### Core Committee

|                       |                        |
|-----------------------|------------------------|
| George Ball..689-8913 | Chris Pheils..681-9026 |
| David Guy..681-5943   | Paul Kelmer..681-9701  |
| Hal Labkon..681-6853  | Dan Ledford..684-6511  |

## BLOOMINGDALE SPECIAL TAXING DISTRICT

P. O. Box 902 -- Brandon, Florida 33511

### Board of Trustees

|                                |                       |          |
|--------------------------------|-----------------------|----------|
| <b>President</b>               | Fred G. Uphoff, Jr.   | 685-3013 |
| <b>Vice President</b>          | J. Christopher Deem   | 684-2491 |
| <b>Treasurer</b>               | Thomas M. Calcaterra  | 685-3097 |
| <b>Recording Secretary</b>     | Russell D. Thompson   | 681-2957 |
| <b>Corresponding Secretary</b> | Christopher L. Pheils | 681-9026 |
| <b>Trustee</b>                 | Joseph D. DeLuca, Jr. | 681-2051 |
| <b>Trustee</b>                 | Errol Whitfield       | 681-7462 |
| <b>PROPERTY MANAGER</b>        | Mr. Lynn Wagner       | 681-7308 |

## IMPORTANT MEETINGS

### SPECIAL TAXING DISTRICT MEETING

The next meeting of the Bloomingdale Special Taxing District will take place on Monday, July 13, at Bloomingdale Community Church (1310 Bloomingdale Avenue). President Fred Uphoff will call the meeting to order at 8 p.m. All residents are encouraged to attend.

### BHA BOARD OF DIRECTORS

The next meeting of the Board of Directors of The Bloomingdale Homeowners Association will take place on Tuesday, July 14, at Bloomingdale Community Church (1310 Bloomingdale Avenue). Vice President Jim Weiss will call the meeting to order at 7:30 p.m. Interested observers are invited to attend.

SUBSCRIPTION RATE: \$12 per year.

WATCH FOR THE BLOOMINGDALE GAZETTE TO BE DELIVERED ON YOUR DOOR ON THE FOLLOWING WEEKENDS:

|                 |                |
|-----------------|----------------|
| August 8/9      | October 10/11  |
| September 12/13 | December 12/13 |
| November 7/8    |                |

The next Special Edition will be in November

## MEMBERSHIP APPLICATION

THE BLOOMINGDALE HOMEOWNER'S ASSOCIATION, INC.

Name \_\_\_\_\_ Telephone \_\_\_\_\_

Address \_\_\_\_\_



# Editorial...

In the last couple of weeks I've heard two very interesting reasons as to why two area residents have chosen not to become active members of the BHA. One guy said "I won't be a member of any organization plotting to overthrow the government of the United States." The only thing that comes to mind that may have given him that idea is that he must have seen BHA Directors Mike Kelly and Steve Briggs running from their homes on Bloomingfield Drive shaking their fists at speeders and assumed this was a frontal assault force.

The other reason comes from a lawyer in the area that said the BHA is "too much like 'Big Brother'." The first reason I can live with fairly easily, but the second is a bit disquieting and has earned further thought.

This is not a dissertation as to why you should join the BHA--that's up to you. (The BHA currently has over 2,000 active members which makes us the second largest formed organization in Hillsborough County.) But we on the BHA Board do have a tendency to categorize residents out here as either active or inactive members. Please note--I said "members." Between Board members and the *Gazette*, we get about 20-30 calls per week from both active and inactive members pertaining to BHA business. Some are forwarded to the STD, some are handled by the *Gazette*, and the rest are handled by Board members. If you've called me, you probably got the "are you a member? If not, that's OK; we'll help you anyway, but please consider sending in your dues" speech. And that's the point. The BHA Board looks at the residents of this area as 'Bloomingdale Residents' and we feel (and by our Charter, we do) represent everyone--active or inactive. I have yet to hear a non-dues paying, inactive member say to me "I don't want you to represent me at the County Commission hearings to widen Bloomingdale Avenue. I enjoy the traffic jams." I haven't heard this either "Don't fight the pollution problems with the waste water treatment plant. I like breathing toxic hydrogen sulfide."

So by virtue of the fact that you haven't said you don't want to be represented--you in fact are. So why even have dues? Because it represents a token of your support.

And believe me, at \$5 per year, that's all it is--a token.

One last point--probably the most important one. People are paying attention to us--lots of people. On a smaller level, we have residents now who come and sit in on our Board meetings and they are always different people who just want to see what's going on. Their input is welcome and important. An article in the Tribune by Gwen Fariss on June 18 brings us to a larger level that we are just starting to discover--the County Commission and local politics. The last couple of times we've had contact with the Commissioners and the county staff, we've had some heavy-duty talks with them about the way they plan roads and the widening of Bloomingdale Avenue. Each time we've said "You have the ability to place transportation networks and infrastructures into known growth areas *before* the problems arise. You have the ability to create a model for the rest of the state right here in Brandon by planning for the future." It seems they paid more attention to us than we thought. On Tuesday, June 16, the MPO (they plan the roads) with Chairwoman/Commissioner Pam Iorio and Commissioner Jim Selvey, changed the way they are going to prioritize the need for a road. Instead of deciding to build a road based on its cost, it is now going to be based on congestion, future growth, and technical features. I don't know that we can necessarily take credit for their change in attitude, but I think that our outspokenness at County

Commission meetings, Zoning Hearings, and meetings with the MPO for the last six months certainly didn't hurt.

So, yes, the BHA counts. We aren't "Big Brother"; we aren't here to control your lives; and we certainly aren't going to overthrow the government. But what we do do is provide a way for every resident of Bloomingdale to be able to communicate with every other resident of Bloomingdale in an organized and effective manner. The BHA is the **ONLY** homeowner's association in Bloomingdale. And as such it represents YOU--whether you chose to pay your dues and become active or whether you wish to remain inactive. And so far, even if I do say so myself, it's doing a darn good job of it. ■

## STD Takes on New Trustee

Bill Whiting likes Bloomingdale. So much so in fact, that he volunteered to be the new Trustee on the Special Taxing District Board of Trustees.

Bill became a Board member on June 8 when the STD Board regretfully accepted the resignation of Trustee Tom Calcaterra. Tom, with wife Beth and family, have purchased a new home outside of Bloomingdale. Since he is no longer a resident, he had to leave his post on the STD. Tom was one of the original Board members and had served as Treasurer.

Bill, on the other hand, not only became a Trustee, but also assumed the role of Corresponding Secretary (the position previously held by Chris Pheils who became the Treasurer). Bill is a resident of East and an Assistant Vice President at Citicorp. His experience in Treasury Cash Management should prove an asset to the community.

Thank you to you both!

**20TH ANNIVERSARY YEAR**

**TAM BAY**

REALTY INC., REALTORS

CALL FOR YOUR APPOINTMENT to see this breathtaking 4 BR/2B, one-year-new-beauty:



Featuring: Caged solar-heated pool with jacuzzi, river rock, and outdoor kitchen. Double fireplace enhancing the sunken living room and large family room with sky lights. Huge country kitchen with real wood cabinets, center cook island, built-in microwave and breakfast area. Elegant formal dining and master suite. Comes complete with Ethan Allen wallcovers, upgraded flooring, and intercom system all on lovely landscaped St. Augustine sod with sprinkler system. \$158,900.

Ask for SHEILA DEAN, Associate  
685-7755 or 685-8907 (eve.)

Member Multi-Million Dollar Club



**NAIL DESIGNERS**

**COMPLETE NAIL CARE**

MANICURES      HOT OIL MANICURES      PEDICURES

NAIL EXTENSIONS      NAIL DESIGNS

685-5886      Evenings  
515 Wilbur St.      By  
Brandon, FL 33511      Appointment

M Hwy 60

↓

Wilbur

↓

Brandon

↓

Brandon



*Thank You! Thank You! Thank You! Thank You! Thank You! Thank You!*

The following businesses showed their community spirit by supporting and sponsoring the BHA July 4 Fishing Tournament and 5K Fun Run:

Florida Sportsman of Brandon  
Barry Beard, Owner  
Bloomingdale Resident

TCBY's

Little Ceasar's Pizza

Beall's Department Store

Bloomingdale Realty

Publix Super Market

Brandon Florist

Yipes! Stripes!

*Thank You! Thank You! Thank You! Thank You! Thank You! Thank You!*

## Lite up Your Life

With \$\$\$ from Partylite. Partylite has candles & lovely accessories. I feel we have the best hostesses & representative program in Party-Plan today.

**NO CASH INVESTMENT  
NO  
DELIVERIES!  
COMMISSION  
AND  
BONUSES.**

Hostesses have already earned \$60 to over \$100 in free merchandise.



Call for a free catalogue

**681-1621**

Bloomingdale Resident



*Above  
the  
Crowd!*<sup>®</sup>

# RE/MAX<sup>®</sup>

REALTY GROUP

2020 West Brandon, Suite 105, Brandon, Florida

Are you looking for **PROFESSIONAL, CARING SERVICE** while selling or looking for a new or resale home? If so, call **Brenda Carter** for RESULTS!



- Residential Specialist Since 1959
- Multi-Million Dollar Club
- Bloomingdale Resident
- Re-lo Specialist, Especially Military
- Member Brandon Chamber of Commerce
- Member Tampa Board of Realtors, Fla. Association of Realtors, National Association of Realtors

Office: 684-0016

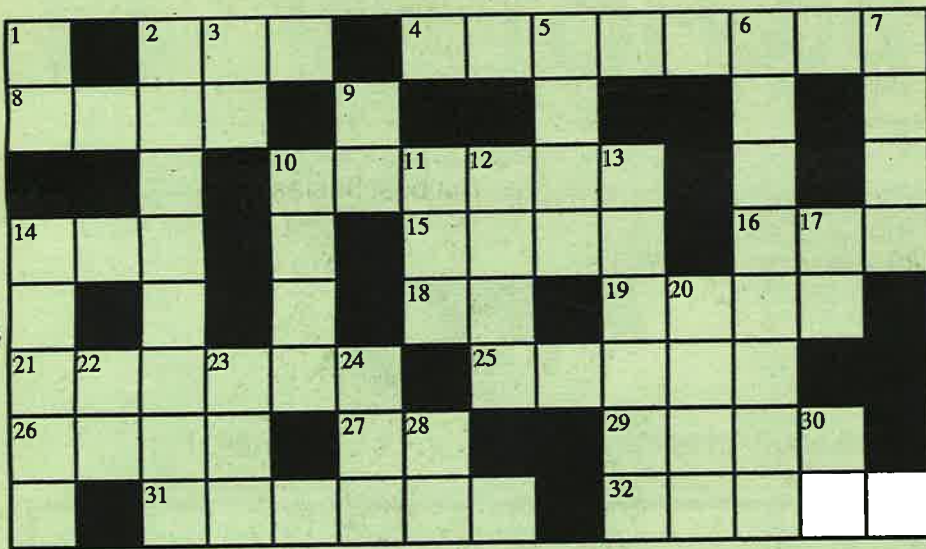
Brenda Carter  
Realtor- Associate

Home: 689-8483



# Kid's Korner

Pre-Tested by Roby DeLuca

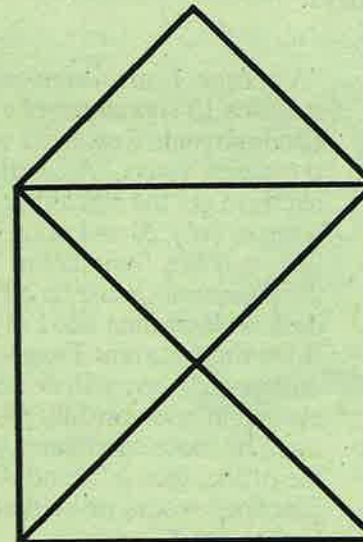


### ACROSS

2. "Meow!"
4. Bloomingdale Little League plays this.
8. Let's go swimming in the \_\_\_\_\_.
10. A danger at the ponds in Bloomingdale.
14. Sailers use this to swab the decks.
15. We can ride this around the block.
16. Ice cream and apple \_\_\_\_\_.
18. The little creature from outer space that got left behind and wanted to go home.
19. A pinball machine says this.
21. Salt and fresh are different types of \_\_\_\_\_.
25. "\_\_\_\_\_, \_\_\_\_\_, read all about it!"
26. For \_\_\_\_\_.
27. Exclamation of surprise.
29. Opposite of short.
31. Peter \_\_\_\_\_.
32. Someone with hostile intent.

### DOWN

1. Opposite of down.
2. Has a monitor and uses disks.
3. The mobster \_\_\_\_\_ Capone.
5. Hide and \_\_\_\_\_.
6. You might ride on this to take a vacation.
7. A place to fish.
9. He placed it \_\_\_\_\_ the table.
10. Seen in the sky at night.
11. 15th President.
12. Let's go fly a \_\_\_\_\_!
13. The original colonists did this many years ago.
14. Use this to cut the lawn.
17. "I found the ball. \_\_\_\_\_ is over here!"
20. What you do to clothes that are wrinkled.
22. Audio Visual Equipment initials.
23. A memorable date or period in history.
24. Another term for 'cry.'
28. Hello!
30. The initials of the company that makes Oldsmobiles.



### PENCIL CHALLENGE

Can you draw this figure? You have to do it without lifting your pencil from the paper and you can't go over the same line twice.

© The Bloomingdale Gazette, Inc.

*Har - Har - Har*

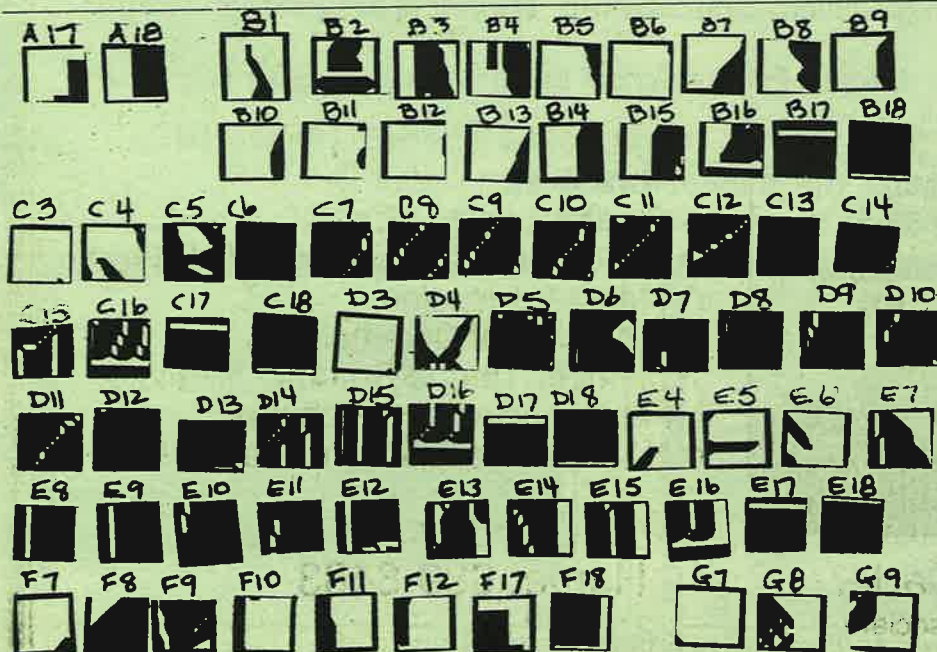
Question: What does a 2-ton parrot say?

Answer: Polly wants a cracker--N O W!

Question: What's black and white and red all over?

Answer: A sun-burned penguin.

Answers next month



Using the grid on the right, re-draw the pieces to the left to form the foundation of our country.

A B C D E F G

|    |  |  |  |  |  |  |  |
|----|--|--|--|--|--|--|--|
| 1  |  |  |  |  |  |  |  |
| 2  |  |  |  |  |  |  |  |
| 3  |  |  |  |  |  |  |  |
| 4  |  |  |  |  |  |  |  |
| 5  |  |  |  |  |  |  |  |
| 6  |  |  |  |  |  |  |  |
| 7  |  |  |  |  |  |  |  |
| 8  |  |  |  |  |  |  |  |
| 9  |  |  |  |  |  |  |  |
| 10 |  |  |  |  |  |  |  |
| 11 |  |  |  |  |  |  |  |
| 12 |  |  |  |  |  |  |  |
| 13 |  |  |  |  |  |  |  |
| 14 |  |  |  |  |  |  |  |
| 15 |  |  |  |  |  |  |  |
| 16 |  |  |  |  |  |  |  |
| 17 |  |  |  |  |  |  |  |
| 18 |  |  |  |  |  |  |  |
| 19 |  |  |  |  |  |  |  |



## STD Election Information

*Will YOU serve your community?*

Each year half of the Board of Trustees of the Bloomingdale Special Taxing District come up for re-election--this year is no exception. Three of the Board of seven are looking to retain their positions: Errol Whitfield, Chris Deem, and Chris Pheils. If these gentlemen run unopposed, they will automatically be re-elected.

Any qualified resident of Bloomingdale is welcome to run for the Board of Trustees. According to Helen M. Swisshelm, Administrative Assistant for the Supervisor of Elections, qualifying papers for candidates are now available and easy to obtain. "Candidates can pick up a packet at this office. Or a packet will be mailed to anyone who requests one by telephone or mail."

Once you've received the papers, they are simple forms verifying who you are and where you reside.

"A petition is also enclosed that requires 15 signatures of Bloomingdale Residents who are registered voters. A candidate needs to get the signatures between noon of July 20 and noon of July 24," said Ms. Swisshelm. Then the paperwork must be on Helen's desk no later than noon of July 24. If the three current Trustees run unopposed, they will be declared re-elected at noon on July 24. Should there be more candidates seeking the office, then a "Stand Alone Election" would be held on September 8.

If you are interested in running for a volunteer position on the Special Taxing District Board of Trustees, call Helen Swisshelm at 272-5850. If you would like more information about the STD, page 2 of this newspaper carries the current list of STD Trustees--any one of them would be glad to assist you.

MICHAEL O. ABDONEY, D.D.S., M.S.D.  
BRUCE W. SCAROLA, D.D.S., M.S.D.

practice limited to orthodontics

413 w. robertson st  
brandon, florida 33511  
(813) 681-1300

4303 n. gomez ave  
tampa, florida 33607  
(813) 879-8142



Members American Association of Orthodontists

### HOMEOWNERS--

NOW YOU CAN BORROW UP TO 100% OF THE VALUE OF YOUR HOME!

**NO:**  
APPLICATION FEES  
APPRAISAL CHARGE  
CREDIT REPORT CHARGE

**YES:**  
QUICK APPROVAL  
WE TAKE APPLICATIONS AT YOUR HOME OR BUSINESS  
IN THE EVENING OR ON THE WEEKENDS

**10.75% FIXED RATE (11.11% A.P.R.) (2PTS)**  
(\$10,000 maximum under this program. Other programs available at different rates, and terms)  
(Rates, terms, and conditions subject to change without notice)

**EXAMPLE:**  
Approximately \$10,300 at 10.75% for 15 years, fixed rate, only \$115.46 per mo.  
(most closing costs added to loan)

**FIRST BROKERS, INC.**  
(Licensed Mortgage Brokers)

681-8853

814 South Regent Circle  
Brandon, Florida 33511



# MADDUX PRIVATE SCHOOL

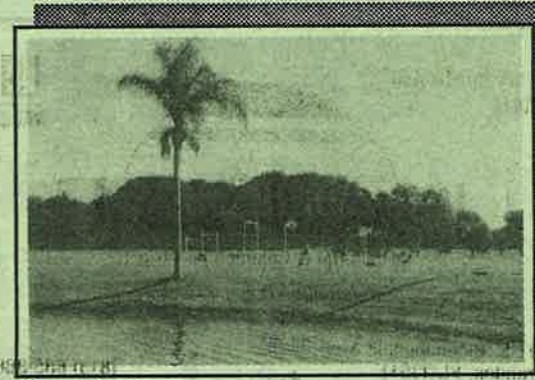
## *Announcing*

**PRE-REGISTRATION:** 1987-88 School Year.  
**GRADES:** Pre-School through 8th Grade.  
**DATE:** Now through August 28, 1987.

## *Also*

Pre-registrations are being accepted for our Learning Disability Center. **Scholarship Money** is available for children with learning problems. Visit our beautiful 30-acre campus overlooking Valrico Lake. Maddux Private School has been providing the very best in private education for over 25 years.

**For More Information, Contact the School Office at:  
689-4763, 685-1814, 685-5972, or 685-6979**



Member of, and Accredited by, the Florida Progressive Schools Association





# WATCH LOG

THIS PAGE HAS BEEN DONATED BY THE BHA.  
ALL AD PROCEEDS GO TO THE BLOOMINGDALE MOBILE WATCH.



## CARING FOR YOURSELF

Do you ever have to take care of yourself after school or while your parents are running an errand? Do you have to watch a brother or sister too?

You know your parents and I, McGruff, the Crime Dog, want you to be safe. Taking care of yourself is a big responsibility, but you can handle it if you follow these tips:

- Make sure you know how to reach your parents where they work and what to do in case of a fire or other emergencies. Learn all the local emergency phone numbers—fire, police, hot-lines, poison control center—and make sure they're posted near all the phones in your home.
- Be sure you know how to use the telephone correctly—both pushbutton and dial—and how to make local, long distance and emergency calls, and how to get the operator.
- Check in with your mom or dad or a trusted neighbor as soon as you get home.
- Make sure you know how to work the door and window locks and lock the door after you come in.
- When you're home alone, never open the door for anyone you don't know well or are unsure of. Check the identity of service people by calling their office before letting them in. And don't let unfamiliar callers know that you're alone.
- If you feel you're being followed on your way home from school, don't go home—go to a store, or back to school, or to the nearest "Safe House."
- With your mom and dad, select a place to keep a key or keys and money for lunch or emergency phone calls.

- Never go anywhere with another adult, even one who says he or she has been sent by your parents. You and your parents might want to adopt a secret "code word" as a signal if another adult has to pick up you.
- If anything happens to you while you're alone that makes you feel uncomfortable, tell an adult you trust. Always. Every time.



## LATCHKEY CHILDREN: YOUNG CHILDREN AT HOME ALONE

An estimated 5 to 12 million children between the ages of 5 and 13 are regularly left alone at home for some part of the day. Leaving children alone always causes some anxiety, but knowing they are prepared to cope with situations that may arise will lessen the worry.

As a parent:

- Be sure your children know how to use the telephone (both pushbutton and dial models) to make local, long distance and emergency calls and to dial the operator.
- Post emergency numbers near all the phones in your home.
- Make sure your children lock the door after they arrive home and then check in with you or a trusted neighbor.
- Teach them to work the door and window locks in your home.
- Tell your children what to do in case of fire.
- Tell your children that they are never to go anywhere with another adult, even one who says he or she was sent by you. Adopt a family "code word" to be used if a third party is ever to pick up your children.
- Teach your children, if they ever feel they're being followed, not to run home but to a store, public place, back to school, or to the nearest "Safe House."
- Teach your children never to get near or into a stranger's car, or to take a walk with a stranger who says he needs the children to "show" him something.
- Impress on your children that you always want to be told if anything happens to them while they're away from you that makes them feel uneasy or uncomfortable. Children will sometimes phrase this as feeling "funny."
- Tell your children not to go into anyone's house or apartment without your permission and make sure you know the people who live in any home your child wants to visit.
- Get together with other parents and approach your school or a community group about starting an extended-day program. Look into starting a McGruff "Safe House" program in which neighborhood parents, grandparents, or other adults are recruited to volunteer their homes to serve as temporary shelters for frightened or lost children. A special sign posted in the window of these homes tells children this is a place to go when they are confronted with a serious problem. Local law enforcement can help in setting up a sound and effective program.



## A MINI-CHECKLIST FOR SITTERS

Find out when the parents will return.

Make sure you know where they are and the phone number.

Write down the street address and phone number of the house where you are sitting.

Have emergency phone numbers for police and fire departments near every phone.

Include the phone number of a neighbor on your phone list.

Ask parents about television, bedtime, play, and food rules for the children.

TO PLACE AN ADVERTISEMENT IN SUPPORT OF "BLOOMINGDALE MOBILE WATCH" PLEASE PHONE ALMA AT 681-5943

YOUR AD COULD BE IN THIS SPACE.



PHONE: (813) 681-3564

## CREATURE CASTLE PETS & PET SUPPLIES

AREA'S LARGEST DISCOUNT PET CENTER

1935 W. BRANDON BLVD. BRANDON, FLA. 33511

Henry Brosnham  
Broker



Residential & Commercial Property

Multimillion-Dollar Producer

611 E. Bloomingdale Ave.  
Brandon, FL 33511

(813) 685-8887

(813) 689-0714

Interior Design Services



Handcrafted Furniture • Accessories • Gifts  
Wallpaper • Fabrics • Drapes • Floor Coverings

BUFFY COOPER  
Design Consultant

Bloomingdale Resident

Atlantic Village  
646 Oakfield  
Brandon Fl. 33511



689-FISH

Florida

SPORTSMAN

of Brandon

1335 W. Brandon Blvd.

- Rod & Reel Repair
- Salt & Fresh Water Tackle

Labkon Insurance Agency



HAL A. LABKON  
1005 Highgrove Ct.  
Valrico, Florida 33594  
(813) 681-6853

LIFE, HEALTH, ANNUITIES, PREPAID DENTAL & LEGAL



## New Day Care Acknowledges Community Concern

La Petite Academy is considering purchasing the land at the corner of Greenhollow and Nature's Way in Bloomingdale East to build a day care facility, according to Scott Spangler, project director for the La Petite Academy. With this purchase the company feels that the concerns of the community should also be taken into account, which is how the Bloomingdale Homeowner's Association became involved.

Several residents expressed their concern about a retention ditch La Petite will have to dig along the West side of the property to satisfy county requirements. Water, snakes, child access, and buffer to the school were expressed in their concerns. The BHA contacted Mr. Spangler and asked if they would be willing to consider a buffer fence of some sort along that side to provide better privacy onto the homes on Highgrove Court.

Mr. Spangler readily agreed to this and sent an acknowledgement that they would be willing to provide this buffer in writing. At a point when La Petite has made the determination to actually purchase the property and/or the timing is right for this area of planning, a representative of the BHA will meet with the homeowners and a representative from La Petite to determine exactly what is needed and where it will be built.

La Petite is currently obtaining approvals from the county and is in the design stage of this future site. If all plans come through, they are hoping to build an identical center to the one in Springhill, Florida. This center will cost approximately \$300,000 to build and will fit in with the surrounding development. One problem they are having is lack of sewer hookup. They are considering a septic system as a possible alternative.



**Associated Medical  
Specialists  
of Brandon**

Chuck Hodges, M.D.  
Tim Lawler, M.D.  
Susan Terry, M.D.



*"Primary Care For The Adult"*

are proud to announce  
the opening of their practice  
in Internal Medicine

4312 Bell Shoals Road  
Bloomingdale, FL 33594  
813/654-3444

721 Robertson West, Suite 108  
Brandon, FL 33511  
813/685-1007

If no answer call 813/681-0164

**SOLD**

 **Merrill Lynch  
Realty**

**DONNA SULLENBERGER**  
9 YEARS OF EXPERIENCE  
SPECIALIZING IN RESIDENTIAL RESALE

WHETHER BUYING OR SELLING--

TEAM UP WITH THE BEST!



MERRILL LYNCH REALTY - PROUD SPONSOR  
OF THE 1988 U.S. OLYMPIC TEAM

Call Donna Sullenberger today--  
find out how **YOU** can be a part of the WINNING TEAM!



**Donna Sullenberger**  
689-8102 - - Office  
684-3929 - - Evening

257 W. Brandon Blvd.  
Brandon, FL 33511

A SUBSIDIARY OF MERRILL LYNCH REALTY ASSOCIATES, INC.



## Bloomingdale Avenue -- Current Details

BHA Directors Susan DeLuca, Joe Liguori, Mike Kelly, and Henry Brosnahan attended a Public Information Meeting at Center Place on June 22, 1987, from 4 to 7 p.m. that was for the purpose of informing the public about the Bloomingdale Avenue improvements from US 301 to John Moore Road. Directors met with various members of the County

staff, most notably Joe Rossie who is heading up the project, and discussed the details and ramifications of this widening process.

The Project Details are as follows:

- \* Project Length: 3.2 miles
- \* Approximate Construction Cost: \$3,800,000

\* Scheduled Construction Starting Date: Summer 1989 (westerly 1/2 mile). Other construction section(s) to be built as funding becomes available.

- \* Roadway Typical Sections:
- (1) US 301 to Duncan Road- Six 12-foot wide travel lanes, grassed median, concrete curb and gutter, 4-foot wide sidewalks;
  - (2) Duncan road to John Moore Road- Four 12-wide travel lanes, 14-foot wide dual left turn lane, concrete curb and gutter, 4-foot wide sidewalks.

### PROJECT DESCRIPTION

Bloomingdale Avenue will be reconstructed from an existing 2-lane road to a 6-lane divided/5-lane undivided roadway with curb and gutter, storm sewer system and sidewalks. A new bridge will be constructed over Buckhorn Creek as part of the proposed project.

In discussions with Mr. Rossie and his staff, several items were noted:

1. The county already owns the right of way along the north side of Bloomingdale Avenue from 301 to John Moore. The south side will require the taking or purchase of an additional easement area of 5-6 feet.
2. An order of taking is presented to the property owner. This is done as the last step just before construction is about to begin. The order then gives the county the right to build on that right of way. Along with this order of taking, a monetary offer of "good faith

value" is presented to the owner for an amount determined by an appraiser. If there is a disagreement as to value, according to Mike Caruthers of the HC Real Estate Department, it then would go to trial where the land owner can speak his peace. The county has the right to take possession of the land, though, during this trial stage.

3. As it is known that the greatest amount of congestion and development is occurring from John Moore to Lithia Pinecrest, the Directors talked to Mr. Rossie about this at length. He agreed that the widening needs to be done in that area and also agreed it should be receiving a greater priority than it is. The Committee, in a separate meeting, had defined the problem as being one of widening John Moore to Lithia Pinecrest and the feasibility of the design being done now with the widening being done as soon as money is available. Mr. Rossie not only felt it was feasible, but a good idea. The design would cost \$150,000. The widening would cost \$2.5 million per mile, which includes construction and acquisition of right-of-way.

Anyone having further questions about the design process, bidding, or anything relating to this project should consult:

Mr. E. Ronald Jacobson, PE  
County Engineer  
Hillsborough County Engineering  
Department  
P. O. Box 1110  
Tampa, FL 33601

### Money Myth #7 Financial Planning is too Expensive.



Quite the contrary, good financial planning doesn't cost, it pays. Because we sell no financial products, insurance, mutual funds and the like, we are able to recommend financial strategies and products that have no commissions.

To date, in fact, every client has received refunds, savings, and eliminated costs in excess of the fee. It is no salesman's double talk for our clients, there was no economic cost at all.

Royal Palm Planning is confident it can do the same for you. So confident, in fact, that we make the following pledge: we will do a comprehensive financial plan for you and, if you believe you've not received value in excess of the fee, the plan is free. And you are the judge, not Royal Palm Planning.

**Royal Palm Planning**

Unbiased • Certified • Fee Only

**684-0282**

Steven D. Madson, Bloomingdale Resident

## Attention River Rock Owners!

Now is the Time to Pressure Wash  
and Re-Seal Your Deck

CALL

## Titanic Surfaces

Specializing in River Rock and Pool Remodeling  
100% Industrial Epoxy Used:

**"We Put Them Down to Stay Down"**

**654-1026**

**Gary Williams**  
Over 10 years experience

**FREE ESTIMATES**  
**GUARANTEED**

**10% OFF**  
**All Installation**  
**of River Rock**

With this ad  
expires 8-7-87

## Bloomingdale's Family Chiropractic

Dr. William J. Dargo, P.A.

*"Your Health Is  
Our Concern"*



**685-5200**

804 West Bloomingdale Avenue • Suite 100

Across from  
Kings Row Shopping Center





## Summary of Responses to the Park Ballot

Prepared by Jerry Underwood  
BHA Director

The following is the data that was received from the residents of Bloomingdale in response to the request for information in the June issue of the *Gazette*. This information will be formalized and presented to Mr. Ed Radice, Director of the Parks and Recreation Department. He will take this information under advisement while preparing the five-year budget for Parks East and West.

A total of 61 ballots were submitted as of 6/29/87.

1. Responses to the field house style were as follows:

|                |          |
|----------------|----------|
| Bellamy Rec    | 16 votes |
| Balm Park      | 34       |
| No field house | 9        |

Two ballots suggested the Bellamy style for Park East and the Balm style for Park West.

2. Responses to the jogging path type were as follows:

|            |         |
|------------|---------|
| Limerock   | 9 votes |
| Clay       | 6       |
| Asphalt    | 24      |
| Wood Chips | 6       |
| None       | 10      |

3. Analysis of the responses shows the following ranking of the items listed:

- 1 field house
- 2 programmed activities
- 3 tennis court lights
- 4 jogging paths
- 5 baby swings
- 6 electricity in Park East
- 7 fences behind homes
- 8 covered raquetball courts

4. Other suggestions were:

- install water fountains
- better landscaping/trees
- wooden toddler equipment
- plants along adjacent homes
- expanded parking lots
- covered picnic pavilions
- tennis court wind screens
- basketball court lights
- benches near playgrounds
- bathrooms in Park West
- volleyball courts
- no parking signs



— ESTABLISHED 28 YEARS —  
**BRANDON**  
**VETERINARY HOSPITAL**  
MEDICINE, SURGERY & DERMATOLOGY



**BIRDS, FISH, EXOTICS, SMALL ANIMALS**  
M-F 7-6 SAT 8-12 APPOINTMENTS REQUESTED

**HARRY D. VILDIBILL, D.V.M.**  
**PHYLLIS CAMPAGNA-GUINN, D.V.M.**

3 MILES SOUTH OF RT. 60  
3301 JOHN MOORE RD. 689-4801  
At Bloomingdale Rd.  
EMERGENCIES 689-4800

FOR YOUR CONVENIENCE, DROP YOUR PET OFF IN THE MORNING & PICK IT UP ON THE WAY HOME

Open  
Every Day  
Til Midnight

**Convenient**  
**Food Mart**

Family  
Owned &  
Operated

681-7216

*The price  
you want.*

*The service  
you want.*

**Hot Meals Are Here!**

OUR HOT FOOD DELI OFFERS MORE VARIETY  
THAN FAST FOOD OUTLETS WITH THE  
CONVENIENCE OF A  
CONVENIENT FOOD MART STORE  
AT A PRICE YOU CAN AFFORD

Owner/Operators  
Paul & Barbara  
Moffett

*The variety  
you want.*

*The groceries  
you want.*

### BREAKFAST

Hot Coffee, Hot Biscuits, & Croissant Sandwiches

### FRESH BAKERY

Donuts, Cupcakes, Cookies, Muffins, & Assorted Bakery

### LUNCH & DINNER

DINNER • 1 Main Dish, 1 Side Dish, with roll ... \$2.29  
SPECIALS • 1 Main Dish, 2 Side Dishes, with rolls ... \$2.99

### EVERY DAY OF THE WEEK

FRIED CHICKEN:  
2-pc Snack ... \$1.49  
3-pc. Lunch ... \$2.29  
MULTI-PACK DINNERS

Whole BBQ Chicken ... \$3.59  
1/2 BBQ Chicken ... \$1.79  
Hot and Cold Sandwiches Made Fresh Daily

Deviled Crabs - Egg Rolls  
Potato Wedges  
Corn dogs  
Mushrooms - Okra

**4322 Bell Shoals -- Bloomingdale East at Glen Haven**

\*Keys Made to Order  
\*Video Film Rentals  
\*Fresh Produce

\*One Day Film  
Processing  
at Low Prices

\*Self-Serve Gas at  
Competitive Prices  
\*Check Cashing

Deli Coffee Produce Ice Sandwiches  
Soda Snacks Ice Cream Candy Party Trays



*Coming in the  
August Issue:*

A new Catholic Church  
comes to Bloomingdale

July 4 Fun Run and  
Fishing in Pictures

The Booster Club --  
what is it?

**Speeding and  
Wooden Fences  
Don't Mix**

by Jackie Tuckey  
*Gazette Staff Reporter*

In mid-June a teen-aged resident of East lost control of her car on Nature's Way and hit the wooden fence bordering the property of Ms. Daryce Moore. (The fence is part of the buffer fence erected by Pulte along the back of 39 homes on

Nature's Way across from Fairway Manors in East.) It was determined that the car went into a skid, hit a section of fence further up the road, went back onto the pavement, and hit the fence again on Ms. Moore's property. No one was injured. The accident happened during the late afternoon hours on a clear day. The driver was cited by the police for excessive speed.

"We hear cars speeding on Nature's Way quite a lot," Daryce said. "My mother was on the patio so I opened the back door to say here comes another one. There was a big crash and a car was in my yard."

Less than a month previously, Daryce Moore and her next door neighbor, Jerry Dvork, had attended the May 11 STD meeting to urge the board to consider replacing the wooden fence

surrounding the homes in that section. At that time they asked the board to weigh the cost of a concrete wall against the long-term costs of maintenance of the existing fence. Daryce had also stated that she felt a safety factor was involved, such as injuries to people in backyards because a wooden fence may not deter a car as well as a concrete wall. Her point was well taken as she watched a small Volkswagon take down the back of the fence and destroy her backyard garden.

Property Manager Lynn Wagner and STD President Fred Uphoff were notified and were quickly on the scene while the police were still there. The Moore's are currently using blankets to cover the area until the five sections of fence are replaced. The driver's insurance will cover damages to the fence and the Moore's property.



**Dr. Mohamed I. Abdel-Aziz**  
Certified Diplomate A.C.O.G.

Is Pleased To Announce The Opening Of His  
**Obstetrics, Gynecology  
and Infertility Practice**  
Located At:

721 W. Robertson (Across from Skateland)  
**654-3200**

•Blue Cross  
•Blue Shield

•Champus  
Assignment

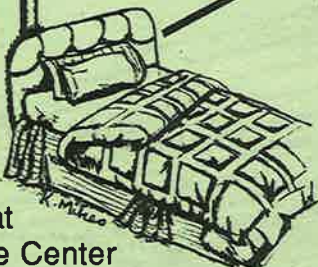


**windows  
& more**

**MORE THAN  
JUST WINDOWS**

•Blinds  
•Valances  
•Carpet

•Wallpaper  
•Draperies  
•Bedspreads



**GET THE  
DESIGNER  
LOOK AT  
DISCOUNT  
PRICES !**

Located at  
The Village Center  
4334 Bell Shoals Rd. (next to Convenient)

**685-0648**

**20% DISCOUNT**  
On All Wallpaper with this Coupon

(Not valid on already discounted books)

**Grable**

STATE CERTIFIED  
MASTER PLYMBER  
#CFC 032591  
INSURED

**Plumbing Co.**

SPECIALIZING IN

**FAST SERVICE**

7 DAY · NO TRAVEL CHARGE · 24 HR

Residential — Commercial

INSTA-HOT DISPENSERS · LAUNDRY TUBS  
WATER HEATERS · DISPOSERS · S.S. SINKS  
ELECTRIC SEWER & DRAIN CLEANING



Call **685-3636**



SAVE THIS COUPON FOR  
**\$500 OFF PLUS \$500 OFF I.S.E. GARBAGE DISPOSER**  
ANY CALL

Coupon Expires 9/11/87



## Bloomingdale Homeowner's Association, Inc. Director's Report May 12, 1987

### PRESENT:

Henry Brosnaham  
Jim Weiss  
Janet Holzman  
Susan DeLuca  
George Ball  
Mark Chapman  
Ron Thompson  
Jerry Underwood  
Bill Armstrong  
Mike Kelly  
Joe Liguori  
Steve Briggs  
Ted Keiser

The meeting was called to order at 7:30 p.m. by President Henry Brosnaham due to the temporary absence of Vice President Jim Weiss. The meeting was held at the Bloomingdale Community Church, 1310 Bloomingdale Avenue, Valrico, Florida. The following is a brief synopsis of some of the items presented.

**Treasurer's Report:** The Treasurer will be preparing a line-item financial statement showing budget versus actual up to this date.

**Bloomingdale Special Taxing District:** Henry Brosnaham addressed the STD Board on May 11 on behalf of the Bloomingdale Homeowners Association. The BHA has been told by the county attorney that the STD or the BHA may enforce deed restrictions. The STD Board said the county told them they had no legal standing to enforce them. Henry has found that the community of Carrollwood has their STD pay the costs of enforcement done by their homeowners association. Mike Kelly suggested a meeting between the attorney who works with the BHA, members from both boards, and the county attorney to clarify the facts. Chris Deem, who is a practicing lawyer, said he would attend a meeting to get this matter straightened out. The STD Board will contact the county attorney to initiate this meeting. Henry stated his strong feelings on the matter of deed restriction compliance in Bloomingdale. He feels both

boards "need to work together to get on the case of those who make a mess of the neighborhood for others." Henry asked Lynn Wagner to attend the May 14 General Membership meeting to explain his job and duties. BHA Board members receive many phone calls from homeowners and at times are not sure whether to refer the caller to the property

manager, the STD Board, or handle it through the BHA. Lynn agreed to attend. Henry also asked about the problem of cars parking on the grass at both Parks. He hoped small wooden signs attached to the fence would work. Fred Uphoff, STD President, said there used to be signs like that, but they were stolen. It was decided to ask Ed  
*Report Continued on page 25*

## Southeast Bank Opens Branch in Bloomingdale

by Jackie Tuckey  
*Gazette Staff Reporter*

The Bloomingdale branch of Southeast Bank is planning to open around mid-September. The bank is now remodeling an old office building near the corner of Bell Shoals and Bloomingdale Avenue. This is the second branch of Southeast in the Brandon area. It will be a full-service institution including a loan department, safe deposit boxes, and a drive-thru window.

Cindy Hardman, a Brandon

resident, will be the new branch's manager. She is currently managing the Court House branch. Previously she was the manager of the residential real estate department. Cindy is looking forward to working nearer to her own neighborhood.

Plans are being made for the grand opening celebration that will probably be held on a Saturday and will include activities and fun for the whole family. ■

# THE GREEN BOUTIQUE NURSERY

685-9494 1014 E. BLOOMINGDALE Hours: Mon.-Fri. 9:30-5:30, Sat. 9-5, Sun. 12-5 IN SOUTH BRANDON

### Heliconias

"False bird of paradise"  
Multiple blooms in bright orange-red  
3 gallon size **\$17.95**

### Washington Palms

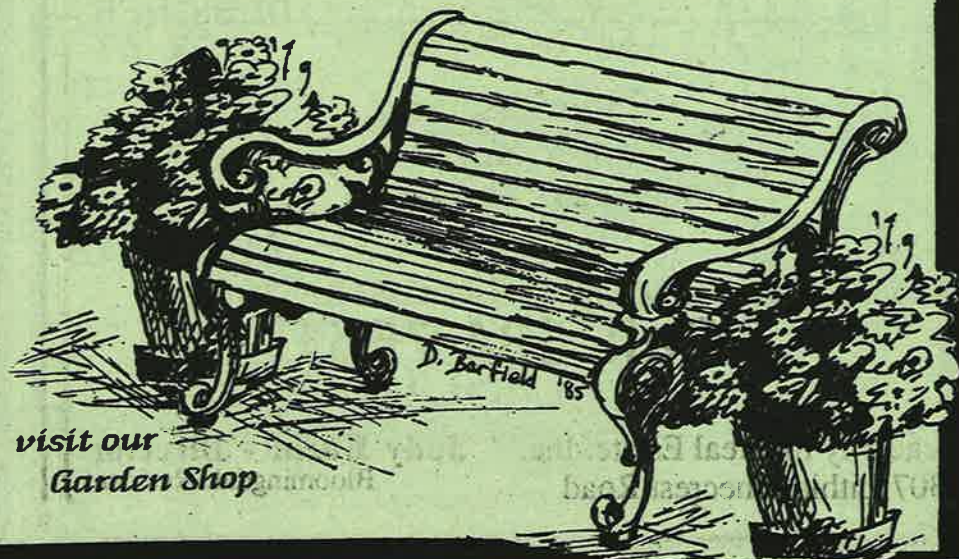
(Hardy)  
Height at planting--4 foot  
3 gallon size **\$15.99**

### Hibiscus

Single and double flowers in  
red, yellow, orange, or pink  
1 gallon size **\$2.79**

### Charming Terracotta Farm Animals

To mount on your patio wall  
Pig, sheep, chicken, or plow horse  
**\$6.99** (not planted)



• COUPON • COUPON • COUPON • COUPON •

**FREE**

Basket for 4 inch pot

1 per customer Expires 8/15/87

• COUPON • COUPON • COUPON • COUPON •

Come visit our  
Garden Shop



Report  
from  
the  
Commissioner's Desk



Commissioner Selvey requested specific information regarding the status of the proposed interim waste water treatment plant scheduled to

be built in the Bloomingdale South area and the agreement between the County and Criterion. The following is the reply from Michael W. McWeeney, P.E., Director of the Department of Water and Wastewater Utilities, in a memo directed to Robert L. Buschman, Director of Public Works.

"In 1977, Hillsborough County entered into an agreement with Criterion Corporation to provide wastewater service for the Bloomingdale Development.

Further the agreement provided that in the event the County could not provide the service, the developer could provide his own interim wastewater treatment service for up to 500,000 gpd, with a waiver of the capacity fees for all capacity thus generated. The County would still have to provide permanent facilities and take the interim facilities off-line at either the Bloomingdale or other permanent facility.

Subsequent modifications to the original agreement provided that Hillsborough County would construct a 75,000 gpd interim wastewater treatment plant to serve a specific development project within the Criterion master project and in return for that, the capacity fees that would be generated by the development tributary to the interim plant would not be waived. Implementing this modification, the County entered into a purchase contract for a 75,000 gpd interim wastewater treatment plant to be designed and delivered to the site for installation under a separate contract. Preparation of the installation contract proceeded and was bid with only one bidder responding, at a cost considered to be unreasonable.

During the period of bidding this installation contract, the developer determined that 75,000 gpd would

be insufficient and needed a minimum of 99,000 gpd up to 250,000 gpd. As the 75,000 gallons would be insufficient for even the first phase, the developer did not transfer permits for the construction of the interim facility or easements for use of his land for that purpose as required for the construction and installation of our facility. We were therefore precluded from honoring our agreement with the developer. During this time, there was discussion by Commissioner Selvey and myself regarding the actual flow requirements for treatment facilities in the Bloomingdale WWTP area.

The plant is specifically required, due to DER's permitting philosophy which requires a plant to be in existence prior to the issuance of a permit for a collection system. Thus, we end up with excess capacity in interim plants in order to get permits for construction of collection systems that will be built over a period of time and be treated at the permanent sub-regional plants.

It is my understanding that the developer is proceeding to construct interim plant facilities of 250,000 gpd in order to supply his treatment plant requirements and get permits for the collection systems in his development. *Sewer cont'd pg 14*

## LADIES EVENING GOLF CLINICS

at the Tuesdays at 6:30 pm for 1 hour  
from July 7 to August 25



**BLOOMINGDALE**  
Golfers Club

CALL **685-4105** TO SIGN UP  
NOW!

\$40 for the series  
Includes  
Classroom  
Instruction

Individual lessons  
by appointment.  
Video lessons also  
available with Head  
Instructor John Reger.

## REAL ESTATE COURSES

Teaching  
with  
Personalized  
Attention  
is our  
Priority

### Summer Specials

- Real Estate Salesman License Course  
Day and Evening Classes
- 14 Hour Continuing Education  
July 29 - July 30
- Sales Training  
July 6 - July 17  
August 24 - September 4

FOR INFORMATION & REGISTRATION  
Call **684-7681**

Academy for Real Estate, Inc.  
3307 Lithia Pinecrest Road

Judy Buzin - Director  
Bloomingdale Resident

## A WINNING SMILE IS SOMETHING WE ALL DESERVE

A healthy smile is a winning smile. And the way to a healthy smile begins with a careful examination of the entire mouth, followed by a diagnosis and treatment plan. This philosophy provides various avenues of treatment to choose from that will enable you to make an educated selection, both health-wise and cost-wise, in your dental care program.

A Winning Smile... You Deserve It!

**JOHN M. CHERRY, JR., D.M.D.**  
**JEFFERY B. COOK, D.M.D.**

Members American Dental Association and Academy of General Dentistry

611 E. Bloomingdale Avenue  
Next to Bloomingdale Square • In the Allstate Building  
**684-6279**



## 5 STAR MEALS FROM THE "5 MINUTE GOURMET"

by Bill Hughes, Executive Chef  
Bloomingdale Resident

### Scallops Provencale

This is a classical French dish that will make any occasion special. This is only going to take one pan, two at the most; and best of all, it is going to take you only 5 minutes to prepare.

2 Tbs. diced onions  
1/2 tsp. minced garlic  
1 Tbs. black olives, diced  
1/4 C white wine\*  
1/2 lb. sea scallops  
1/4 C tomatoes, peeled, seeded and diced  
2 Tbs. butter  
salt and pepper to taste  
chopped parsley to garnish

Melt butter over medium-high heat in a 6" or 7" saute pan. When the butter begins to foam, add the garlic

and swirl it around to release the oils and flavor of the garlic. Add the scallops and saute only until they are bright white (do not over cook or they will be tough and rubbery). Remove scallops and keep them warm. Add the onions and saute only until they are transparent. Add the wine and deglaze the pan by swirling over heat to remove any particles stuck to the pan bottom. Reduce this liquid by half. Add the tomatoes and olives and add salt and pepper to taste; cook only until tomatoes are heated through. Now, add the scallops and toss together to thoroughly combine.

Serve with a side of rice and a fresh vegetable and a tossed salad. This recipe gives you two servings.

(\*You may use a wine substitute is you wish. Use equal amounts of wine vinegar and water to equal the amount of wine called for.)

*If you would like a special recipe, or need a menu for a special occasion, just drop me a line in care of this paper; and remember, good food makes for good friends. ★*

Sewer from pg 13

Since the facility will be built by the developer under an existing permit, additional public hearings are not required and flow from his projects will be treated at his interim plant. Had the County constructed the interim facility, we would probably have been able to use capacity in the Bloomingdale Interim Wastewater Treatment Plant (1 mgd), without having to put wastewater into the 75,000 gpd interim plant, unless delays in the construction schedule of the Valrico subregional project were excessive. The 75,000 gpd package plant has been constructed and is being shipped to Hillsborough County under the existing contract." ■



THE  
SMILE  
YOU'LL  
COUNT  
ON



**\$1625.00 Complete**

ORTHODONTIC TREATMENT

Reg. \$1925.00 - \$2100.00

(Diagnosis not included)

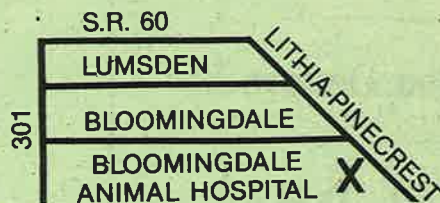
Coupon Expires August 7, 1987

• Cosmetic Dentistry • Orthodontics  
• Temporomandibular Dysfunctions

RICHARD A. ASSING D.D.S.  
General Dentistry

719 W. Robertson St. • Suite B  
Brandon, FL 33511

**685-6139**



## Bloomingdale ANIMAL HOSPITAL

Dr. G. Brooks Buck, DVM

SURGERY • MEDICINE • GROOMING • BATH & DIP  
BOARDING • PET SUPPLIES • EMERGENCY SERVICE

Open:  
Mon.-Fri. 7:30-6:00  
Sat. 7:30-1:00

**681-6612**

3404 LITHIA PINECREST RD. • VALRICO



**VALUABLE COUPON**

**GROOMING 40% OFF**  
with this coupon

FIRST VISIT ONLY

Coupon Expires 8-7-87



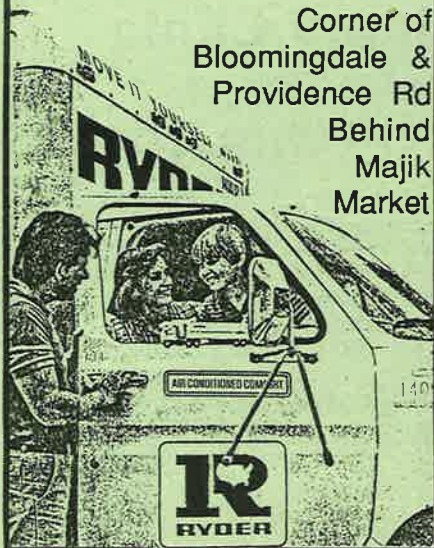
# RYDER

Moving in or out of  
Bloomingdale ?

684-0698

The right move.  
Big truck or small.  
Rent local or one-way.

Corner of  
Bloomingdale &  
Providence Rd  
Behind  
Majik  
Market



## Where Does All The Money Go?

A Special Taxing District  
Monthly Report

by Jackie Tuckey  
Gazette Staff Reporter

The Bloomingdale Special Taxing District Board of Trustees monthly meeting was called to order June 8 at 8:02 p.m. In attendance were Fred Uphoff, Chris Deem, Chris Pheils, Joe DeLuca, and Errol Whitfield. The following agenda items were discussed:

1. The board listened to proposals from three accounting firms: Oliver and Co.; Alvarez and Ferraro; and King, Morris and Co. While ethics prevents accounting firms from bidding for contracts, the board members asked questions of each as to what services would best suit the needs of the STD. Afterward, the board split 2-2 in their opinions of the two Brandon firms (Alvarez & Ferraro and King, Morris and Company). Fred Uphoff said he leaned toward Alvarez and Ferraro, citing their years of experience in

Brandon and some dealings with governmental budgets. A motion was made to hire Alvarez and Ferraro to provide accounting and auditing assistance for the STD. The vote went 4-1 in favor; Chris Deem voted no.

2. Mark Creager, landscape architect from the Green Boutique Nursery, presented a plan for landscaping the John Moore entrance. While noting that many variations of the plan could be done, he explained that his intent was neat appearance, low maintenance, and hardy shrubs. He also said he kept in mind a theme (a style or type of plant) that would be used at the other entrances to tie it all together. Astrid Davies, of Pat and Mike's Nursery, was also present but did not have a specific plan drawn up. She intends to do so by the July meeting. The board is simply considering its options and trying to get an idea of what could be done and how much it might cost. They noted that no major expense would be undertaken without trying to get some feedback from residents. The board asks residents with opinions or

ideas on landscaping to attend a monthly meeting or call a board member.

3. Tom Calcaterra submitted a letter of resignation. He sold his home and as of May 29 is no longer a Bloomingdale Resident. A unanimous vote accepted his resignation. The board also voted to send a letter of thanks for 18-months of work on the board.

4. There was one letter of application submitted as replacement for Tom-- Bloomingdale East Resident Bill Whiting. After reading Bill's background resume and listening to why he wanted to join the STD board, it was an unanimous vote that accepted him.

5. Property Manager's Report--The wall painting is finished. The painters showed Lynn Wagner that there was no cap on top of the wall the entire length of the John Moore section. It is just concrete block from top to bottom. Also, there was a problem with the smooth walls on Garnet and Canoga Park.

STD Money Cont'd on page 16

## Pat & Mike's Nursery

Hwy. 60 E. Brandon - 1/2 mile E. of Albertson's  
689-2560

### Summer Sale

CREPE MYRTLES — All colors  
Buy One — Get One FREE \$3<sup>95</sup>

STAR MAGNOLIA — Multi Trunk  
Reg. \$65 \$45

MALLO HIBISCUS  
Dinner Plate Size Blooms -  
3 Gallon Size \$8<sup>50</sup>

QUEEN PALM SPECIAL— All Sizes  
Buy 2 or More —  
Let's Make a Deal From \$9<sup>95</sup>

HIBISCUS — Ass't Colors  
& Sizes From \$2<sup>49</sup>

KING SAGO PALMS — \$125  
Up to 4' of Wood

EXOTIC BLOOD LILIES  
Many Bulbs to a  
3 Gallon Pot \$15<sup>95</sup>

CITRUS TREES — Largest  
Variety & Sizes in Area From \$19<sup>95</sup>

Other Varieties  
of Lilies From \$2<sup>50</sup>

SHADE TREES—Oaks•Maples•Camphor  
•Golden Rain Tree & Many More \$9<sup>95</sup>  
From

LIGUSTRUM TREES  
From \$5

HANGING BASKETS IN BLOOM—  
Verbena, Impatiens, Lantana, Purslane,  
Moss Rose, Bougainvillea, Begonia,  
Blue Daze and More \$7<sup>95</sup>

OLEANDER — All Sizes &  
Colors From \$2<sup>50</sup>

EXOTIC INDOOR & PATIO  
PLANTS—Cacti•Annuals  
•Ground Cover•Landscape  
Shrubs & Trees

CREPE MYRTLE—  
Multi Trunk  
15' Tall — \$65  
Reg. \$95

FREE Plant Care Instructions  
& Insect Control Sprays  
Landscape Consultants  
Sprinkler Systems

Specimen Canary Island Palm•Pindo•Reclinata From \$650  
Delivered and Installed

# CUSTOM POOL CONTRACTING, INC. QUALITY WORKMANSHIP

14 Years in the Brandon Area

- Individual Contractor
- Personalized Service
- Custom Workmanship--  
Not A Production Product
- Lifetime Warranty
- Competitive Pricing

**BEAT THE HEAT** - Order your Custom Pool  
before July & save the additional July service tax

Lenny Henderson  
Contractor  
11524 Country Oaks Dr.  
Tampa, Florida 33624

654-0280  
968-4678

•Licensed•Bonded•Insured



**STD Money, from page 15**

One coat of paint made no improvement in the appearance of the walls. The painters put on a second coat and still were not happy. Lynn recommended that they (the STD) pay for the second coat (paint only, not labor), and for painting the pump station on Bell Shoals. Lynn made a request to Quality Grass for sod for certain sections. It would come to about three acres of work at a cost of about \$5,000 per acre. This would cover areas on Nature's Way, Green Hollow medians, Bell Shoals, the Rosemead entrance, and Springvale. Lynn spoke to the mowers and their supervisor about avoiding brushing against the walls with the mowers. He advised the board that he is not happy with the mowing as it is now being done. The board asked Lynn to contact the mowing company and have a representative appear at the next board meeting. Lynn painted the wooden upper sections of the wall at the Green Hollow entrance and found some damage from insects and ants in the second section. He rented a dumpster placed at the Rosemead entrance to use for

cleaning up the overgrowth and trash along Bell Shoals. A new estimate for the edging contract was submitted for \$400 per edging. Criterion is enforcing deed restrictions in East. They may do the same in West--no instances have come up yet. Rittenhouse Builders is selling the homes in their inventory at Chadd's Ford; Criterion asked Lynn to water and take care of the entrance there. Lynn may have to pay the new 5% service tax beginning July 1 and asked the board to consider raising his salary to cover it.

6. The board voted to pay the paint contractors \$381.15 for the second coat of paint and the pump station. The board discussed whether to apply a third coat to the smooth walls. Chris Deem suggested a test section first to see if more paint makes any difference. Fred suggested having the contractor bring an expert from the manufacturer to give recommendations. The board voted 4-1(Chris Pheils voted no) that board members will go to look at the walls in question. If a concensus agrees, Fred will notify

the company to apply a third coat. The board will also look at all of the other walls in Bloomingdale to decide which ones to paint now before the rains become a hindrance.

7. The STD now functions under a \$250 bid limit. This means that anything that will cost over that amount must be advertised and open to bids. Fred felt that raising the limit would save the board much time, work, and some expense. He

suggested \$1,000. Chris Deem and Errol suggested \$500. It was moved and passed 4-1(Chris Deem voted no) to increase it to \$1,000.

8. It was passed unanimously to increase the property manager's salary by \$52.50 per month to cover the 5% service tax contingent upon his not being exempted.

9. Chris Pheils moved that the board stop paying Quality Mowing  
*STD Money cont'd on pg 18*

**Suncoast Veterinary Clinic**

MICHAEL S. MITCHEL, D.V.M.  
MARGARET WISSMAN, D.V.M.

**PHONE: 689-1228**

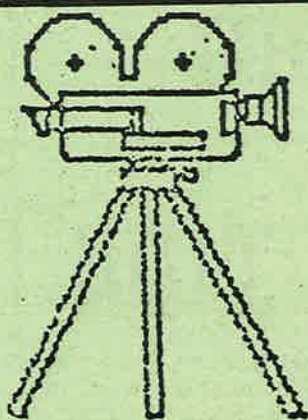
HOSPITAL HOURS: Monday: 8:00 a.m. - Noon; 1:30 p.m. - 9:00 p.m.  
Tues., Thurs., Fri.: 8:00 a.m. - Noon; 1:30 p.m. - 6:30 p.m.  
Doctors' Hours: Wednesday: 5:00 p.m. - 9:00 p.m. Only  
by Appointment: Saturday: 8:00 a.m. - Noon

BOARDING, BATHING, VACCINATIONS  
A COMPLETE MEDICAL, SURGICAL  
& DIAGNOSTIC FACILITY  
FOR DOGS, CATS, BIRDS & EXOTICS

Conveniently Located to Brandon at 101 S. St. Cloud Ave.,  
Valrico — 1/2 Block South of Rt. 60



BLOOMINGDALE RESIDENT



Rent a Camcorder

★ WED. ★  
**SPECIAL**

Rent one tape  
get one rental

**FREE!**

**FOUR STAR VIDEO**



3509 Bell Shoals Rd  
Valrico, Florida 33594  
689-3257

**FREE ANNUAL MEMBERSHIP**  
GIFT CERTIFICATES AVAILABLE

Open 7 Days  
Mon-Sat 10-9  
Sun 12-5

48 hr.

Rentals Available  
All the Latest Titles



**ALL TAPES**  
**\$1.99**



**VCR Games**  
available for rent



**VCR Repairs**  
Free Estimates



## Garden Color In Summer

by Rosalind Creager  
The Green Boutique

Summer color doesn't always have to be achieved with annuals and perennials. Many bushes, small ornamental trees, and other plant families offer brightly colored flowers throughout summer.

Hibiscus produces showy, large flowers in single or double blooms. These flowers come in a variety of colors; such as, red, white, pink, yellow, or orange. They are everblooming in summer and fall if watered liberally and fed regularly. Hibiscus bushes will usually be killed back in a severe freeze, but will come back the following summer. In Tahiti, a woman wearing a hibiscus flower over her right ear signifies that she is looking for a mate.

Cold-hardy Texas Sage, with its dusty silver leaves and profuse tiny purplish-pink flowers, is a good choice for sunny, well-drained locations.

Heliconias, sometimes called "false bird of paradise" or "parrot flower" has banana-like foliage with orange-red bracts. This plant may be grown in a container or planted in the ground. Provide plenty of water and fertilize regularly. It will probably freeze in winter, but it will come back in summer. The heliconia is easily propagated by division.

The allamanda "golden trumpet" prefers full sun and blooms waxy-looking yellow flowers all summer. A heavy frost may burn them back, but they will come back each summer.

Bottlebrush, in the upright or weeping form, blooms red cylindrical flower spikes in cycles throughout the year. They are reasonably cold hardy, sometimes suffering in an extremely cold winter.

Oleander (all parts of this plant are poisonous) is ideal for sunny hot locations. Water and fertilize sufficiently for luxuriant blooming. Flowers come in colors of red, white, pink, or a dwarf shrub in

salmon. Oleanders are an excellent potted plant. Caterpillars do like oleanders so you will have to dust or spray to control them.

Bi-color iris is not commonly planted, although it is an excellent iris for our area. It is cold hardy and blooms continuously in summer. The flowers are about the size of a quarter and are a soft yellow accented with two dark brown spots. This iris tolerates full sun or partial shade. It will thrive in normal conditions.

Crape myrtle, most commonly planted as a small ornamental tree, produces beautiful clusters of frilled flowers at the tips of new growth. They bloom red, white, pink, lilac, purple, or red and white variegated. They flower all summer and again in September or October. Prune the tips after each blooming period to encourage new growth and another flush of flowers. Crape myrtles drop their leaves in winter and the bark flakes off to reveal a smooth silvery-tan inner bark. Part of the crape myrtle's charm is the effect of its smooth bark in winter after the foliage has fallen.

Prepare your soil, water, and feed your plants regularly to ensure a summer of garden color. Sit back and enjoy!



**Old World Cheese Shop**  
FAMILY RESTAURANT

**BREAKFAST EGGSTRAVAGANZA**

**\$1.99** Dine-In Only  
Monday-Sunday 7 A.M.-11 A.M.

**2 Eggs Served With Choice Of: 2 Bacon Strips Or Sausage, Home Fries Or Potato Pancakes And Toast.**

Oak Park Plaza • Corner Kings & Lumsden • Open Daily 7 A.M.  
685-8762 • BRANDON

KIDS EAT FREE  
Parents have dinner with us & your kids (10 & under) eat FREE.  
Sun. Thurs. 5-10 P.M. Dine-In Only  
Kiddie Burger or Hot Dog, Fries & Sm. Soda




Dance with  
*"Miss Lezlee"*

Offering Classes in  
BALLET•TAP•JAZZ•ACROBATICS  
CREATIVE MOVEMENT  
Pre-School thru Adult  
Member of State Dance Assoc.

For More Information Call  
**684-4282**  
Creekside Village  
108 E. Bloomingdale  
John Moore & Bloomingdale

**"A DANCING CHILD IS A HAPPY CHILD"**



**THE MODEL'S WORKSHOP**

Summer Classes Available  
Ages 4 - Adult

- ★ Female & Male Modeling
- ★ Pageant Training
- ★ Self Improvement
- ★ Photography

FOR INFORMATION CONCERNING  
BRANDON CLASSES CALL  
**989-0970**

Creekside Village  
108 E. Bloomingdale  
John Moore & Bloomingdale  
Lucy B. Wagner - Director

**FAMILY DENTISTRY**  
**FAMILY DENTISTRY**  
**FAMILY DENTISTRY**

**SCOTT Q. BRYINGTON, D.D.S.**  
General Dentistry — Adults & Children

---

Cosmetic, Restorative & Preventive Care  
New Patients & Emergencies  
Saturday Appts. Available  
Insurance Welcome

**681-2529**

3413 S. KINGS AVE.  
BRANDON  
Kings at Bloomingdale  
Bloomingdale Resident



# BHA GAINS TAX-EXEMPT STATUS

It's only taken 2 1/2 years, numerous telephone calls, and mountains of paperwork, but the Bloomington Homeowner's Association, Inc., finally received its approval from the IRS to be tax-exempt. The BHA is officially a non-profit organization now.

It does not change much outwardly, but it does help out with budgeting for the year. The BHA had been a not-for-profit organization and had been subject to taxes. Until now, it has had to spend monies earned every year to avoid paying any federal taxes. With this change of status, as long as the BHA doesn't take in more than \$25,000 per year, any monies left over at the end of the fiscal year can be saved for the

next year and they don't have to pay taxes on it. This way funds can be escrowed for the Scholarship Award or profits saved from one function to pay for another one a year later. Or money can be put away as a contingency fund for unknown future problems without being taxed.

Due to the change in the tax laws though, individuals paying their \$5 dues will not be able to deduct them from their income taxes.

Thank you to Bob Hermida, Shelly Oakes, Errol Whitfield, Susan DeLuca, and Janet Holzman for helping to make this a reality.

## STD Money cont'd from pg 16

\$200 for trash pick-up. It passed unanimously.

10. The board authorized Chris Pheils to buy a file cabinet for the secretary's notes, files, etc. It will cost about \$130-\$150.

11. The board notified a Bloomington Resident that had requested permission, that she could remove a portion of the wall behind


her house to put in a pool; but outlined guidelines and restrictions to ensure safety of others and the quality of the wall.

12. A Bloomington Resident was notified that their fence request had been approved from a previous meeting. The board asked that they put it inside the line of the concrete wall in case the wall is extended at some future date.

**Bill's**  
**Chain Saws & Mowers**

Lawnmowers

Jacobson  
Ariens  
Kee



Engines

Briggs & Stratton  
Tecumseh  
Honda

**Factory Authorized Sales & Service**  
**For All The Above**  
Bloomington Ave. & Providence Rd  
Behind Majik Market  
**685-7033**  
Pick Up & Delivery

Since Opening Our Doors in August '86  
We Have Sold Over  
**39**  
properties in this area!

Average Days On The Market  
When Listing With Us  
**39!**

**COMING SOON!**  
Drive-Buy Radio

  
**BLOOMINGDALE**  
REALTY inc.  
611 E. BLOOMINGDALE AVENUE  
685-8887

**WE SELL FAST &  
OBTAIN MAXIMUM VALUE**

Our homes have sold for an average of **99%**  
of the listed or asked price!

Call and ask  
how you can have your home advertised  
on TV at **NO COST** to you!

**NEW**  
our listings on  
**TV HOME  
HUNTERS**  
Channel 28, 9am  
Sundays



Cass Thompson



Evvie Whitford



Cindi Guthrie



Cathy Harp



Peggy Frinak



## The Sewer Plant and the School

by Mark Chapman, BHA Director

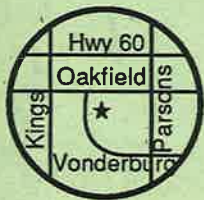
Residents have expressed a concern regarding the problem of the Bloomingdale Waste Water Treatment Plant and its close proximity to the Alafia Elementary School. Therefore, I contacted Dr. Larry Wagers of the Hillsborough County School Board. At issue was the treatment plant's history of discharge of raw effluent into the wetlands surrounding the plant and school and the emission of noxious and possibly toxic fumes (Hydrogen Sulfide). I asked Dr. Wagers what the school's plan was should emissions or discharge occur when the school was in

session. He and his staff were unaware of the problem and are currently reviewing this.

I expressed that at the very minimum we would like to see some sort of warning provided to the school by the Plant and a school response appropriate to the hazard. Ideally we would like the school board to support efforts to close and dismantle the plant. I expect a response from him in two to three weeks. As we learn more information, it will be published in this newspaper. ■

# KEEP YOUR SMILE BRIGHT

## It's the 1<sup>st</sup> Thing People Notice



Office Hours:  
Monday-Friday  
Evenings by Appointment  
New Patients and Emergencies Welcome  
Visa, Master Card, Healthcap

William K. Belton, Jr. D.M.D., P.A.  
Family Dental Care  
403 Vonderburg Dr.  
Brandon, FL 33511

689-5098



## Bloomingdale Senior High School Athletic Booster Club Elects First Set of Officers

by Gayle Redstrom, Publicity

At the June 1st general assembly meeting the following officers were elected for 1987-88.

President: Mel Pace  
Vice President: Frank Wood  
Secretary: Nancy Walker  
Treasurer: Betty Camille  
Representatives at Large:  
Paul Uravich  
Jack Jaquish

We are accepting ads for the  
Booster Club Football Program and

Charter Memberships.

Next month's general assembly meeting will be held at J. C. Handly Park Soccer Complex in the BAYSL Building on Monday, July 13 at 7 p.m. For information call 684-6192.

*Editor's Note: You may be asking "What in the world is an 'Athletic Booster Club' and what do they do?" Next month in the Gazette, we will tell you all about this very important organization and what it means to the new Bloomingdale High School.* ■

## MOVING SUPPLIES

- DISH PACK
- BOXES
- TAPE
- FREE DELIVERY

**FREE  
PACKAGE PICK-UP**  
Bloomingdale Residents Only!

Providence Square  
1939 W. Brandon Blvd.  
(by Chili's Restaurant)

the  
**Mail Room**

- UPS/Fed. Ex./Emery (& others)
- Western Union
- Answering Service
- Fruit Shipment
- Mail Forwarding
- Office Spaces
- Mail Box Rental
- Bulk Mail
- Packaging/Supplies
- Passport Photos

(813) 684-6245 (813) 684-MAIL  
postage stamps • photo copies • gift wrapping  
• greeting cards • notary public • rubber stamps • keys

We Service All Makes of Solar Systems. All Work Guaranteed.

FAMILY OWNED  
AND  
OPERATED  
GENE & KEVIN KALINOWSKI, OWNERS



Embrace the Sun Now & Save

Quality Solar Systems  
OF BRANDON, INC.

Pools - Spas - Domestic Hot Water  
Do-It-Yourself or We'll Install  
RESIDENTIAL • COMMERCIAL

**Keep Yourself In Hot Water!**

CALL TODAY  
DON'T DELAY

DO IT NOW  
AND ENJOY  
YEAR AROUND  
SWIMMING

In the same location  
as Sparkle Pool Supply  
4340 BELL SHOALS  
In The Village Center

685-4419  
Eves. 689-1462

MEMBER  
  
BETTER  
BUSINESS  
BUREAU, INC.



## Lasagna and Spaghetti Come to You!

Tired of pizza but don't want to have to cook? Here's a new twist--homemade Italian food delivered to your door for dinner. Tom Aquilina (his son is Ray Aquilina, a Bloomingdale Resident) is a retired restaurateur who used to have a whole chain of Italian restaurants called "Ricco's." But even though he's retired, he still likes to keep

busy by cooking up some of his specialties for YOUR dinner. If you call him between 10 a.m. and 3 p.m., he'll deliver your dinner to you between 4-7 p.m. that evening. He does this Monday through Friday for busy working families.

Here's Tom's menu if you are interested...

|                            |        |
|----------------------------|--------|
| Homemade Lasagna           |        |
| \$2.25 per serving         |        |
| Spaghetti with Meat Sauce: |        |
| 1 serving                  | \$1.25 |
| 2 servings                 | \$2.50 |
| 3 servings                 | \$3.45 |
| 4 servings                 | \$4.35 |
| 5 servings                 | \$5.25 |
| 6 servings                 | \$6.50 |
| Budget Lasagna:            |        |
| 1 serving                  | \$1.75 |
| 2 servings                 | \$3.50 |
| 3 servings                 | \$4.95 |

|                    |          |
|--------------------|----------|
| 4 servings         | \$6.40   |
| 5 servings         | \$7.75   |
| 6 servings         | \$8.95   |
| Extras:            |          |
| Large Meat Balls   | 30¢ each |
| Pint Italian Salad | \$1      |
| Loaf French Bread  | 89¢      |
| 1/2 Loaf           | 45¢      |

He has free delivery and only does this in our area. If you'd like to give him a try call 654-0416.



**CALL AND ASK FOR  
Donna MacGiffert**  
BLOOMINGDALE RESIDENT



**Florida, Inc.**

257 WEST BRANDON BLVD.  
BRANDON, FLORIDA 33511

(813) 689-8102

FROM: DONNA MACGIFFERT, REALTOR ASSOCIATE  
4 year Bloomingdale Resident  
Multi-Million Dollar Club  
685-8617 eves../689-8102 office

**38**  
**SOLD ~~34~~ IN BLOOMINGDALE !!!**

- THINKING OF SELLING?
- LOOKING TO BUY A HOME?

**CALL AND ASK FOR DONNA MACGIFFERT  
YOUR NEIGHBORHOOD SPECIALIST**

We are a major national corporation with a reputation for business know-how. We are Resale and Relocation Specialists. Merrill Lynch Realty is committed to providing the best Real Estate services available.

**JOIN THE WINNING TEAM!**

**DONNA MACGIFFERT,  
MERRILL LYNCH REALTY, AND YOU !!!**

**DONNA M. MacGIFFERT**  
REALTOR®-Associate  
MULTI-MILLION DOLLAR CLUB



PLEASE WELCOME YOUR  
NEW NEIGHBORS AT:

3905 Kristin Place - East  
715 Caliente - West  
Both Pending

*Donna MacGiffert*

4-year Bloomingdale Resident  
685-8617 Evenings  
689-8102 Office

**M.S. & M.**  
A SUBSIDIARY OF  
MERRILL LYNCH REALTY ASSOCIATES INC.



## Boonesbury: House Hunting

Betty and I were proud of ourselves. We had proven to be cagey home shoppers so far. By carefully watching the news, we had discovered that Bloomingdale was a quiet, uncongested area. Now we would further demonstrate our skills by visiting some of the builders in the area.

"Remember, Betty," I lectured, "don't fall in love with the first place we see. Stay calm, detached, objective. Narrow your eyes like this." I narrowed my eyes to show her the crafty homebuyer look.

With our brows properly furrowed, the family set out. Our first stop was Suses Homes. The salesman greeted us. "Something wrong with your eyes?"

(Heh. Heh. It was working. We

impressed him!)

He led us through the model home.

"Calm, detached, noncommittal," I whispered to Betty.

"This is the laundry room."

"Beautiful!" I gushed. "Oh Betty, can we buy this one?" The realtor produced a contract as Betty elbowed me in the stomach.

"Let's see the bathrooms," she demanded.

The salesman led us out back. "You've probably heard about the county's sewer hook-up problems. Well, we've found the solution! This is our three-bath model," he announced proudly as he pointed to a row of neat, trim outhouses.

"How charming!" I exclaimed. "Can we pick our own colors?"

"It smells around here," observed Buffy, our teenager.

"Let's go," snapped Betty.

Our next stop was Pully Homes. "Our major feature," intoned the saleswoman, "is a free fence. This wooden fence in the backyard was left by the farmer who used to own this land. We throw it in for free!"

"How rustic," I cried. Betty caught my wrist as I reached enthusiastically for the checkbook.

"There's a distinctive odor," Betty nasalized. "Is there a sewage plant nearby?"

"Betty!" I cried. "Watch your language!" I hustled everyone into the car, apologizing profusely to the saleswoman.

The rest of the afternoon did not go well. Betty and the kids insisted on finding fault with every area. They didn't like the homes at Hiccup-Bark, because there were no street lights. The salesman assured us that the lights would be installed as soon as they put in streets. ("Just an oversight," he explained.) Movely Homes wouldn't do and N/Y Homes were too isolated. ("You're the first family to find us!" a desperate saleswoman exclaimed.)

Our last stop was Romanhouse Homes. A salesman showed us the model.

"Hey Dad!" Bobby, our ten-year-old, had been exploring the neighborhood. "There's a bunch of lemons tied to the house next door! How come?"

The salesman was perspiring.  
*Boonesbury see page 24*

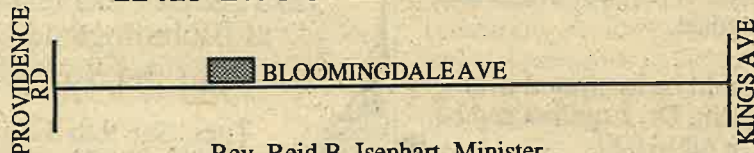
### Bloomingdale Presbyterian Church

CHURCH SCHOOL  
9:15 AM

WORSHIP SERVICE  
10:30 AM (with child care)

- at -

THE TINY CITIZENS CHILD CARE CENTER  
11418 BLOOMINGDALE AVE.



Rev. Reid B. Isenhart, Minister  
PRESBYTERIAN CHURCH (USA) Southwest Florida Presbytery



Give your child the tools needed to succeed: basic reading and math skills, confidence in his or her ability to learn, and the desire to achieve in school. Just a few hours a week with our certified teachers can build your child's skills through individualized testing and tutoring in:

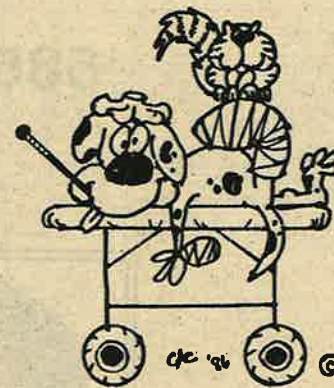
Reading • Phonics • Math • Study Skills  
Writing • Spelling • SAT/ACT Prep.

Convenient Summer Hours!  
Call us; we can help.



And Now In...

TAMPA 972-3385    CARROLLWOOD 960-3385    BRANDON 681-3385



## ANIMAL EMERGENCY CLINIC

745 WEST BRANDON BLVD.  
(Adjacent to Sonny's BBQ)

**PHONE**  
684-3013  
684-3137

PARTICIPATING VETERINARIANS:  
Bloomingdale Animal Hospital  
Brandon Veterinary Hospital  
Kelly Animal Hospital  
Meadowrun Animal Hospital  
Riverview Veterinary Hospital  
Ruskin Animal Hospital  
Santa-Cruz Animal Clinic, Inc.  
Suncoast Veterinary Clinic

**HOURS**  
Mon to Fri  
6 p.m. to 8 a.m.

**WEEKENDS**  
Sat Noon to  
Mon 8 a.m.



## May I Introduce...

by Jackie Tuckey  
Gazette Staff Reporter

TCBY stands for "The Country's Best Yogurt." The shop opened early in May at Bloomingdale Square, but the grand opening festivities are set for July 11. Erin Reeves, a Bloomingdale West resident, is the new manager.

Erin explained that their frozen yogurt is just like soft-serve home-made ice cream. Every day the shop serves French vanilla, chocolate, and two other flavors that rotate daily from a selection of 24. These are as varied as other ice cream stores including many fruit flavors, chocolate mint, and peanut butter. TCBY also carries a few flavors made with aloe juice, and a tofu dessert.

The whole point of frozen yogurt is that it tastes good and is 96% fat

free with up to 50% fewer calories than ice cream. As a matter of fact, the calorie count is 29-41 calories per ounce, depending on the flavor you choose. For those not necessarily counting their calories, TCBY makes sundaes, banana splits, crepes, pies, etc. They also have a variety of toppings like nuts, fruit, oreos, M & M's, and other fun things.

The hours at TCBY are Monday-Saturday 11 a.m. to 10 p.m., and Sunday noon to 10 p.m. Drop by to register for a free trip to Jamaica to be drawn at the grand opening party plus a free sample of "The Country's Best Yogurt."

\*\*\*\*\*

Ray Aquilina, DDS, is new to Brandon, is a new resident of Bloomingdale, BUT...is *not* new to dentistry. Dr. Aquilina has just left the Air Force, where he had been a practicing dentist for over eleven years, and opened his private practice at 4320 Bell Shoals in the

Village Center in the East. While in the Air Force, he received advanced training in all the specialities of dentistry and conducted speciality clinics in dentistry while on staff at three regional hospitals. Treating both adults and children, he practices general dentistry with a specific expertise in emergency care. This experience was gained through many years of conducting emergency pain clinics.

Ray, with his wife Doris and daughters aged 4 and 5, recently moved to Bloomingdale South to be near his new office. His interest in computers led him to the BHA where he helped to go door to door for donations for the BHA Computer Fund. He is not only interested in computers, but he also repairs and programs them. Stain glass making is another hobby he pursues, and samples of his work can be seen in his new office here in Bloomingdale.

If you would be interested in an appointment, Dr. Aquilina can be reached at 689-1529.

# BAIRD'S

## Custom Framing

WE FRAME ANYTHING!

You will find in our Gallery--  
Fine Art, Limited Edition  
Prints, Original Oils,  
and Posters

We frame...  
Photography and Needlework

We also block...  
Needlework

**SAVE THE PANTHER  
POSTER AVAILABLE**  
Proceeds will go to Life Rescue Inc.  
If framed here % will go to Life  
Rescue Inc.

3218 Lithia Pincrest Rd  
at Bloomingdale

681-7133  
Tues- Sat 9 to 5  
Evenings by Appt



## BOB SANDS REALTY, INC.

1218 OAKFIELD DRIVE • BRANDON FL 33511

685-7726



**MILITARY  
RELOCATION  
SPECIALISTS**



CHERYL S. LEDFORD, GRI  
Realtor-Associate  
(813) 684-6511

**BLOOMINGDALE RESIDENT**

RESIDENTIAL • ACREAGE • COMMERCIAL

PLEASE CALL AND ASK ABOUT  
MY 30-DAY MARKET PLAN

SPECIALIZING IN RESALE  
HOMES IN OUR  
NEIGHBORHOOD





## RESTAURANT REVIEW by Elton Dumont

As a service to our new residents (as well as some of the veterans), we are planning periodically to have our restaurant critic (who shall remain anonymous) review some of the area's restaurants. The basic rating will be in three areas: **FOOD, SERVICE, and ATMOSPHERE.** The highest rating is 4 1/2's.

**Fettuccine's**  
1941 Hwy 60 (Brandon Blvd)  
Valrico 684-1132

Food: ✓✓✓1/2  
Service: ✓✓✓  
Atmosphere: ✓✓✓1/2  
Overall: ✓✓✓

This fine Italian restaurant has recently opened in the Valrico Plaza shopping center at the corner of Hwy 60 and Valrico Road.

We were greeted quickly and seated

immediately. The first impression of the muted lighting and the finely set tables was of elegance. The ambience showed quickly even though it is only one big room with a divided area and step up on one side.

The busboy served our miniature rolls (with a fine garlic flavor) quickly as well as filling up our water glasses and placing an ample butter tray.

Although no mixed drinks were available, the wine list was extensive and comfortably priced. House wines were available by the glass, carafe, or 1/2 carafe.

We thought the initial service from our server was a little on the slow side, but it did get better as our meal progressed.

This is an authentic Northern Italian restaurant, so don't expect a lot of red tomato sauce dishes, although they were available. The appetizers included calamari (fried squid), provinciales (escargots), a mussel

and clam dish, as well as the traditional antipasto for two. I ordered the mussels and clams, but was informed they were out of mussels, not a good sign for a Saturday night and a new restaurant.

The pasta entrees ranged from \$5.95 to \$7.95 and included 7 fettuccine dishes, obviously the namesake and the house specialty. In addition to Fettuccine Alfredo, there was Fettuccine Gorgonzola (bleu cheese and parmigian cheese) and Fettuccine Blaognese (red meat sauce), as well as manicotti and lasagna on the pasta entrees.

The salad was quite plain, just lettuce, tomato wedge, and onion; but the salad dressing was really quite good. It tasted like a base of red wine vinegar and did compliment the lettuce.

Other entrees included a varied veal selection, as well as chicken and fish dishes. The fish entrees included shrimp and Italian-prepared snapper and trout. My companion ordered the veal scallopini marsala which was excellent. Fresh veal with mushrooms in a lightly herbed brown sauce with a sparkling flavor of marsala wine. Truly delicious.

I ordered shrimp scampi a la diavala. Instead of the typical scampi in garlic and butter sauce, this shrimp scampi was prepared in a spicy hot (but not too hot) red tomato sauce. With the garlic flavor, this turned out to be an unusually delicious experience. I can't wait to repeat the order; it was that good.

Dessert included Italian cheese cake and coffee, although Espresso is available.

Each table had fresh cut red carnations, and even though the attire was casual, the service was black tie and attentive.

Our bill for two, including one dessert and no wine was under \$40 including tax and gratuity (15%). We hope that this restaurant stays around a long time in our area as it can become one of the better ones in the Southeast Hillsborough County.

*Elton Dumont is a fictitious name. Mr. Dumont visits eating establishments anonymously for this column. His opinions are his own and do not necessarily reflect the opinions of The Bloomingdale Gazette or its staff.*



## BERNIE'S PEST PATROL

Call:  
626-8447

"Bernie's is Better"

**PROFESSIONAL SERVICE  
AT AN AFFORDABLE PRICE**

**NO CONTRACT!**

**CANCEL SERVICE ANYTIME!**

**EIGHT YEARS EXPERIENCE**

**LICENSED, INSURED & CERTIFIED**

**LOW INITIAL CHARGE!**

**NO & LOW ODOR SPRAYING. TOO!**

- \* MONTHLY PEST CONTROL
- \* FLEA CONTROL
- \* TERMITE CONTROL
- \* FIRE ANT CONTROL
- \* INSPECTION REPORTS

1420 Longwood Loop  
Tampa, Fla. 33619

Mention This Ad!

BLOOMINGDALE

Dr. Ray Aquilina, D.D.S.

## COSMETIC FAMILY DENTISTRY



OVER A DECADE OF  
PROFESSIONALISM IN ALL  
ASPECTS OF DENTISTRY

NEW PATIENTS & EMERGENCIES  
WELCOME  
NITROUS OXIDE (LAUGHING GAS)  
Visa, Mastercard, & INSURANCE  
Evenings & Weekend Hours Available  
Bloomingdale Resident

4320 S. Bell Shoals Rd.

**689-1529**

Village Professional Center  
at  
Bloomingdale

Experienced  
in Emergency  
Dental Care

"Discover the Power of a Healthy Smile"



*Boonesbury, from page 21*

"Well...I...uh...this heat is really something, but this is Florida."

"There you go, Bobby," I replied. "This is Florida. There are a lot of lemons around here."

That evening I devised a scientific way to choose our home. We wrote the names of all the builders on pieces of paper, then placed them in little Bippy's (our toddler) G. I. Joe Commie-Basher Helmet. Betty, Buffy, Bobby and I gathered around Bippy and the helmet. We were all silent. Bippy crawled around, then headed for the helmet and pulled out a scrap of paper.

"Well," I asked excitedly, "which is it?" We leaned forward with anticipation.

"Frygwlahz," announced Bippy.

We sighed happily. We had found the home of our dreams.

*To be continued....*

## Committee for the Newcomers and Oldtimers Picnic Now Forming

Over 700 Bloomingdale Residents enjoyed the Newcomers and Oldtimers Picnic last year in September, and now it's time to get ready for this year's picnic.

Anyone wishing to be part of the organizational body, is invited to a meeting at the residence of Susan and Joe DeLuca on Saturday, July 18 at 1 p.m., 3906 Kristin Place, in the East. Call 681-2051 for directions and information.

*A Warm Invitation Is Extended To You By The*

## Bloomingdale Community Church

A BRETHERN CHURCH

YOU ARE ALWAYS WELCOME AT  
THESE SERVICES

SUNDAY

9:30 a.m. Sunday School  
10:30 a.m. Morning Worship  
6:00 p.m. Evening Worship

WEDNESDAY

7:30 p.m. Family Night Bible  
Study

1310 E. BLOOMINGDALE AVE.  
VALRICO, FLORIDA 33594

CHARLES F. ANKNEY, PASTOR

Church phone 681-2790 Pastor's phone 684-5318

A HEARTY WELCOME

*Awaits You*



## T & R Quality Lawn Care

*"You grow, we'll mow"*

Rich Blackwood  
Brandon, Florida

685-1364  
689-6351



*Above  
the  
Crowd!*<sup>®</sup>

CALL  
TODAY  
FOR  
FREE  
MARKET  
ANALYSIS

# RE/MAX<sup>®</sup>

REALTY GROUP

2020 West Brandon, Suite 105, Brandon, Florida

## MEET A RE/MAX PRO

10 YEARS

EXPERIENCE -

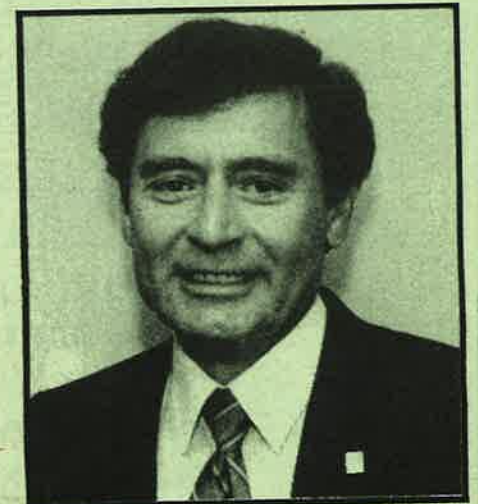
SPECIALIZING IN

RESIDENTIAL HOMES -

NEW AND RESALES

OFFICE 684-0016

HOME 685-6905



**Durant Parker, GRI**  
Bloomingdale Resident



**Report, from page 12**

Radice of the Parks Department about signs. The BHA is concerned about walls being taken down to allow construction of swimming pools. Is this weakening the walls?

Mike Kelly, George Ball, Jerry Underwood, and Jim Weiss will serve as the STD Committee members to make sure that at least one Board member attends all STD meetings.

The *Gazette* is to list Mike Kelly and George Ball as STD liaisons.

**Scholarship Award:** George Ball will present the first \$250 award at the General Membership meeting on May 14. Four applications were received. The Committee members are: Jerry Kent, Chris Pheils, Mark Chapman, and Jerry Underwood. They will be meeting May 13 at 7

p.m. at George's house to determine the winner.

**July 4th Fun Run:** Bill Armstrong stated that everything was pretty well in gear. He will be working out details with the *Gazette* to get the registration form and information into the paper. The suggestion was made that reflective vests might be used as a prize. The *Gazette* will be printing sponsors names as a thank you.

**Bloomingdale Avenue Widening:** Mike Kelly and Henry Brosnahan recapped their May 11 County Commission meeting on the rezoning matter. They asked for a continuance to get the Commissioners to consider the seriousness of the situation--which greatly disconcerted Arvida. The continuance had support, but the motion did not pass. This committee will meet on May 22 at 8 p.m. to discuss where to go from

here. Susan DeLuca is to call the local TV stations to see what kind of coverage we can get. A letter is to be sent to Arvida congratulating them on the re-zoning and wishing them the best of luck. It was also suggested that a letter be sent to each of the County Commissioners thanking them for allowing us to speak at the May 11 meeting and re-iterate our important points as to why Bloomingdale's widening should be re-prioritized.

**Neighborhood Watch:** There are only 22 members--not enough. The *Gazette* is to print a listing of all the streets in Bloomingdale and which ones don't have coverage. Then Mary Odum, the telephone chairman, will call to try to get coverage.

**Personal Invitations:** The Board feels that the community needs to be more involved in the workings of the BHA. Therefore,

five residents will be invited to each Board meeting to sit in and listen/learn/participate.

**Membership Committee:** Mary Odum is to call BHA members to get a membership committee going now to get ready for the October membership drive. A new membership application in the *Gazette* will include questions such as occupation and interests to get a broader survey of the residents and their talents.

**Board Nominations:** Five individuals were suggested for nomination to the BHA Board of Directors as Alternates to fill the two empty positions: Wayne Anderson, Bill Whiting, Susan Gill, Terry Hicks, and Dave Carson. Jim Weiss is to contact each as to whether or not they would like to serve, plus their special skills.

Happy First Anniversary...Happy First Anniversary...Happy First Anniversary...Happy First Anniversary...Happy First Anniversary...

Happy Anniversary

Happy Anniversary

Happy Anniversary

Happy Anniversary

**Allstate®**

**INSURANCE AT BLOOMINGDALE**

611 E. Bloomingdale Avenue  
Next to Bloomingdale Plaza

**681-5303**

DON BUA



STEVE BRIGGS  
BLOOMINGDALE RESIDENT

**AUTO • HOME • LIFE • BUSINESS • GROUP HEALTH**  
Allstate Insurance Company \*Flexible Premium Annuities  
Allstate Life Insurance Company

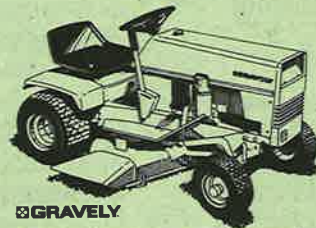
**TERRITORIAL DISCOUNTS FOR BLOOMINGDALE RESIDENTS**

**REMEMBER: "You're In Good Hands With Allstate"**

Happy First Anniversary...Happy First Anniversary...Happy First Anniversary...Happy First Anniversary...Happy First Anniversary...



# The All New Christies. Where It's Always Better Buying Power.



**GRAVELLY**

The Cadillac of tractors lets you cut & garden with one long-lasting machine. Electric start, 5-year warranty and easy automotive-style handling. Plus, a **FREE** push mower. Reg. \$2695 **Now \$1899**



**ECHO**

Cleanup's a breeze with this powerful 2-cycle blower. Operates in any position. Electronic ignition, fingertip control, fan-head nozzle.

**Now \$149.95**



**YARD PRO  
BY WEED EATER**

This featherlight (12 lb.) trimmer features tap-and-go head and automatic line advance.

**Now \$99.95**



This 16hp workhorse is ideal for large acreage. 2-yr. warranty. 3-cylinder diesel tractor with AG tires.

Reg. \$6472 **Now \$4295**



**TROY-BILT  
MOWER**

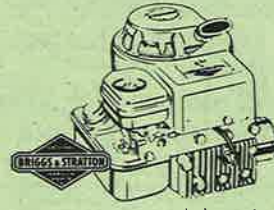
3.5hp Troy-Bilt JUNIOR. Precision one-hand operation. Power-driven wheels. **Factory direct pricing.** Reg. \$749 **Now \$639**



**KOHLER  
engines**

This long-lasting 8hp replacement engine features a cast iron sleeve and oil pump and smooth, quiet operation.

**Now \$599.95**



A low-cost, economical alternative to small engine replacement.

5hp vertical shaft **Now \$199**  
8hp vertical shaft **Now \$259**



**LAWN-BOY**

A popular, light weight, self-propelled 2 cycle mower. Easy starting, no raking and no messy oil changes! **FREE** bag

Reg. \$499 with trade **Now \$399**



**Poulan  
Chain Saws**

This easy-start, solid state saw is perfect for firewood or small trees. Self-oiling chain means better cutting and control tip bar is safer to use.

Reg. \$189.95 **Now \$109.95**



**Tanaka**

Finally, an electric start trimmer with easy, fingertip control. Smooth and quiet with auto-feed line.

Reg. \$399 **Now \$329**



**TRIMLINE**

A lightweight edger that folds down to fit in the tightest of storage areas. Easy to push, precision operation.

Reg. \$239 **Now \$149.95**



**HOMELITE**

Lightweight, easy-to-start Homelite XL makes all light trimming easy and fun. Great value in an automatic chain oiling saw.

**Now \$99.95**



**ROOF**

This sturdy, smooth riding 8hp mower with centerpoint steering means easier maneuvering and better traction. 30" cut with pivoting front eliminates scalping. Briggs & Stratton engine.

Reg. \$1195 **Now \$988**



**ROPER**

This powerful 18hp rider is equipped with Briggs & Stratton I/C engine and a two year warranty. Electric start. Dial-A-Cut infinite height adjustment. Easy on and off.

Reg. \$2895 **Now \$2188**

Christies is the most complete one-stop power equipment center in Tampa Bay. Because we deal directly with manufacturers, our better buying power saves you money on every purchase you make. And what's shown here is just a small sample of our complete selection!

### FULL FINANCING & FREE DELIVERY

Finance your purchase right at Christies with Instant Credit, 90 days same-as-cash or MasterCard and Visa. And we make it easy to get you into power with **FREE** delivery right to your door!

### COMPLETE PARTS & REPAIR SERVICE

Old equipment worn out? Try guaranteed replacement parts from our complete inventory. Or let our factory-trained service crew put it in shape quickly. Written estimates, of course.

### TRADE-IT-IN OR RENT-IT-OUT

When push comes to shove, come to Christies!

We'll gladly take your old equipment on trade and you'll get the best available trade-in price on a new replacement.

Or, simply arrange a rental, short term or long. We'll even help you decide the right equipment for the job so you don't rent more power than you need.

### MORE POWER TO YOU. FOR LESS THAN YOU'D THINK.

Christies wants to be your Power Equipment Dealer. So we'll cut the best deal possible the factory will allow on any product we carry. With new owners, new product lines and soon, a new store, we're trying hard to be the dealer you turn to first for power equipment.

Now open Sunday 12-5 Mon-Fri 8-6 Sat 8-5  
685-4544 or 1-800-282-7850  
1 1/2 mile east of I-75 on Hwy 60 Brandon

Now under new ownership.



Where It's Always Better Buying Power



## CLASSIFIED ADS

**FOUND:** Wire-rim prescription glasses on Bell Grande. Call Gazette office, 681-2051, to claim.

**FOUND:** Two mailboxes. Call Lynn Wagner, Property Manager, 681-7308, to claim.

**FOUND:** Kitten at Park West. Call 681-1452 to identify.

**HELP WANTED:** Brandon Florist has two positions available for personable individuals with good grammatical skills. One position requires the use of a computer. Call 681-4831.

**HELP WANTED:** Part-time flexible hours in Bloomingdale. Phone work and filing--no cold calls. \$6/hr to start. Ask for Mrs. Kale, 685-7350.

**FOR SALE:** Men's 5-speed Schwinn bike. \$60. 685-3822, leave message.

**FOR SALE:** 36' ranch-style steel door with windows--\$50 OBO. Lawn mower. Sears rear bagger. Good condition. \$80 OBO. Stereo rack cabinet. Excellent condition--\$35. Two bar stools with rattan backs, \$30 pair. Two moss-green lamps 20" high with matching fabric shades--\$30 pair. 689-0676.

**FOR SALE:** Round glass coffee table with chrome base, 36". Plus, end table: square chrome/brass with glass top and bottom, 26". Both for \$100. 681-9954 after 5 p.m.

**ROOMMATE WANTED:** Need a Christian middle-age lady to share new apartment in Bloomingdale. Must speak Spanish. Call Susan at 684-3951.

**STAMP COLLECTORS:** 140 different old USA mint commemoratives with a face value of \$5.50--all for \$5. 689-0092.

**COMPUTER SERVICES:** Data input, mail labels, flyers, etc. We use IBM compatibles. Work with Leading Edge, Lotus, DBase, NewsMaster. 684-0313. Bloomingdale Resident.

**WOODEN PLAYGROUND EQUIPMENT:** Custom made and installed. Lowest prices. For estimate call Claude Allen, 685-0716. Bloomingdale Resident.

**AMWAY:** Artistry cosmetics, personal care essentials, home and auto-care products, health and fitness supplies. Call Claudine Boucher, 684-3546. Bloomingdale Resident.

**HOUSE CLEANING:** \$25. References provided upon request. Call Betty Griffin at 754-1962.

**SEWING:** For professional alterations and sewing needs, call 681-7640. Bloomingdale Resident.

**ARE YOU NEW TO THE GREATER BRANDON AREA?** "Welcome Neighbor" welcomes newcomers with a valuable packet full of local information, gifts & coupons. Call us today for your FREE visit (we don't sell anything). Phone Pam at 681-6853 or 645-3153. "Welcome Neighbor" is a member of the Greater Brandon Chamber of Commerce.

**FOR SALE:** 70 gallon marine aquarium with custom formica cabinet, canister filter, UV filter, power heads, and more. \$250 or best offer. Will assist set up. 684-1574.

**BABYSITTING:** Specializing in infant care through 3 years. 684-6283. Bloomingdale Resident.

**BEAUTICARE & COLOR:** Call me for a FREE color analysis appointment where you will learn more about skin care and proper glamour applications using BeautiControl's great products. Hazel Smith, Certified Consultant, 685-8711. Bloomingdale Resident.

**FOR RENT:** Virnel Associates presents rental units at Russellwood. There is no place quite like our place. Come ask the people who live here. Short and long term lease. Furnished and unfurnished. 681-7774 (24 hours).

**STAINED GLASS:** Stained glass and leaded glass panels and windows. Custom made and installed. Call after 6 p.m. Tom Wood, 681-1884. Bloomingdale Resident.

**LAWN MAINTENANCE:** Mowing, edging, trimming. Reasonable rates. Free estimates. Call Zocchi Mowing at 654-3545. Bloomingdale Resident. Member Brandon Chamber of Commerce.

**CLEANING:** Commercial and residential. Offices, beauty shops, rentals, homes, etc. Window cleaning available. Excellent references and very reasonable. Licensed and bonded. For a free estimate call P & R Cleaning Service at 681-7335. "Quality Service is our only business!"

**LAWNMOWER BLADES SHARPENED:** A sharper blade means a healthier lawn and easier mowing job. Ted Fliegel, 3907 Butternut Court (West). 689-9373.

**TYPING AND MORE:** Resumes, word processing, custom typing, mail lists and labels. Simplified Services at 684-4897

**VCR SET-UP!** To attach your VCR to second VCR, antenna, or cable--watch one channel, record another--call Jim Frey, 681-3739. Bloomingdale Resident.

### BLOOMINGDALE RESIDENTS WHO ARE:

**AMWAY REPRESENTATIVES:**  
Claudine Boucher -- 684-3546

**AVON REPRESENTATIVES:**  
Delaine Heyman -- 681-9407

**BEAUTY CONTROL CONSULTANT:**  
Hazel Smith -- 685-8711

**DISCOVERY TOYS:**  
Mrs. Glenn Bell -- 685-8775

**MARY KAY COSMETICS:**  
Lynn Williams -- 685-2196

**TUPPERWARE DEALERS:**  
Phyllis Jerpi -- 685-9007

(This listing is free, just let us know who you are and what you represent.)

CLASSIFIEDS ARE FREE FOR BHA MEMBERS! Call 681-2051 to place your ad.

### BABYSITTERS

|                            |                      |
|----------------------------|----------------------|
| Brian Brundage, 15         | Lisa Moore, 18       |
| Stacy Brundage, 13         | 685-3605             |
| 681-8887                   | Kelly Pheils, 12     |
| Krista Butler, 13          | 681-9026             |
| 681-5367                   | Shawn Purtell, 14    |
| Julie Cook, 15             | 684-3028             |
| 681-5465                   | Robyn St. John, 15   |
| Peter Cunningham, 13       | Heather St. John, 16 |
| 685-5255                   | 685-4638             |
| Jennifer Curry, 13         | Dana Stephens, 15    |
| 654-4231                   | Jason Stephens, 12   |
| Katie Fannin, 12           | 684-4680             |
| 685-5290                   | Brandi Vinson, 11    |
| Kathy Handlin, 15          | 681-4885             |
| 681-4915                   | Bill Westbrook, 12   |
| Heather Harker, 14         | 689-8265             |
| 681-4743                   | Heather Wood, 14     |
| Donna Jacobson, 15         | Michelle Wood, 13    |
| 684-5206                   | 681-1884             |
| Michelle Jernigan, 15      | Cathy Young, 10 1/2  |
| 685-4150                   | 684-0540             |
| Mike Leavitt, 13, 684-9767 |                      |

### YARD WORK &/or ODD JOBS

Ryan Beard, 12  
689-4302  
Alex Blanchard, 17  
685-8028  
Scott Craig, 16  
684-3702  
Matt Cunningham, 16  
685-5255  
Bob Farkas, 14  
684-6841  
David Freeman, 14  
684-7765  
John Heyman, 13  
681-9407  
Roosevelt Jackson, 11 1/2  
685-1670  
Michael McMahan, 19  
684-6323  
Dana Stephens, 15  
Jason Stephens, 12  
684-4680  
Wes Watson, 14  
684-0605



# Karen Kleens

The most trusted name in housekeeping.

## 685-9265

Fred Schwabe & Associates  
Bloomingdale Resident  
Life Rates **COMPETITIVE** by Phone  
... LIFE INSURANCE  
... HOSPITALIZATION PLANS  
... I.R.A. - ANNUITIES  
... Medicare Supplements

P.O. Box 2170  
BRANDON, FL 34299-2170 (813) 689-2058



**Florida, Inc.**

**DONNA M. MacGIFERT**  
REALTOR®-Associate  
MULTI-MILLION DOLLAR CLUB

257 W. BRANDON BLVD.  
BRANDON, FL 33511

(813) 689-8102  
AFTER HOURS: (813): 685-8617



BLOOMINGDALE RESIDENT



**Florida, Inc.**

**DONNA SULLENBERGER**  
REALTOR®-Associate  
MULTI-MILLION DOLLAR CLUB

257 WEST BRANDON BLVD.  
BRANDON, FL 33511

(813) 689-8102  
AFTER HOURS: (813): 684-3929



Typesetting  
by

The Bloomingdale Gazette  
Call 681-2051  
for more information

THE ORIGINAL  
WOODEN  
GYM



**Lowest Prices!**

- Wooden Swingsets
- Accessories
- Pressure Treated

(813) 874-0260

4704 W. Buffalo Ave., Tpa., FL 33614

Bouquets • Decorating • Promotions

# Balloons

AND MORE  
Costumed Delivery

**COLLEEN P. ANDERSON** (813)684-4371  
Designer - Decorator

BLOOMINGDALE RESIDENT

This space is available  
for as little as \$10 per month.

Call 681-2051 for details.

PHONE (813) 685-5840

**PICK-UP AND DELIVERY**



Skip's

**Lawn Mower  
Repair & Parts**

3218 Lithia Pinecrest Road

SKIP BAIRD

Valrico, FL 33594



I LOVE THESE LITTLE PEOPLE,  
AND IT IS NOT A SLIGHT THING  
WHEN THEY WHO ARE SO FRESH  
FROM GOD, LOVE US.  
CHARLES DICKENS

*Diana Jackson*

Water Safety / CPR Instructor

3421 Cadé Lane  
Valrico, FL 33594  
684-6086

Babies to Adults  
Group or Private Lessons  
Heated Pool

BLOOMINGDALE RESIDENT

A MEMBER OF THE SEARS FINANCIAL NETWORK  
BUS (813) 685-6510  
RES (813) 685-8545



LOANA E. RUSSELL  
Multi Million Dollar Club Member

BLOOMINGDALE RESIDENT



COLDWELL BANKER  
RESIDENTIAL REAL ESTATE, INC.  
777 WEST LUMSDEN ROAD  
BRANDON, FL 33511

# KOUNTRY

**CHILD CARE CENTER**  
Quality Child Care in a  
Loving, Caring Atmosphere  
Now Accepting Fall Enrollment  
Helen Cooke, Director C-MC 121

722-Lithia-Pinecrest, Brandon 684-0028

BLOOMINGDALE RESIDENT

LAWN CARE  
LANDSCAPING

## THE GRASS RAT

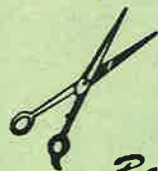


HAROLD BARBER  
713 Caliente Drive  
Brandon, FL 33511

689-9684

BLOOMINGDALE RESIDENT

FAMILY HAIR CARE



*Mr. Willy's*  
**Barber & Styling Shop**

PHONE 685-3361

LITHIA PINECREST RD.  
& BLOOMINGDALE AVE.

(813) 685-6510 BUSINESS  
(813) 684-0650 RESIDENCE

A MEMBER OF THE SEARS FINANCIAL NETWORK



**JOAN E. WALKER**  
REALTOR / ASSOCIATE™

Bloomington Resident

COLDWELL BANKER  
RESIDENTIAL REAL ESTATE, INC.  
777 WEST LUMSDEN ROAD  
BRANDON, FL 33511

## BULLETHOLE GUNSHOP, INC.

Buy • Sell • Trade • Repairs

Browning • Colt • Smith & Wesson • Ruger • Walther

749 Brandon Blvd. West  
Brandon, FL 33511

ELLIOTT SCHILLING

Bloomington Resident

Ph. (813) 684-8484

BLOOMINGDALE RESIDENT



**BOB SANDS REALTY, INC.**

**CHERYL S. LEDFORD, GRI**  
REALTOR-ASSOCIATE®

Member Million Dollar Club

Office: 813-685-7726

Eves: 813-684-6511

1218 OAKFIELD DR. • BRANDON, FL 33511

Each office independently owned and operated ERA® REAL ESTATE



## SKATELAND of BRANDON

713 W. ROBERTSON STREET

P. O. BOX 2178

BRANDON, FLORIDA 33511



JOHN & LORI PATE, Managers