

The

# BLOOMINGDALE

Gazette

Volume XXIII, Number 7

July 2002

The Official Publication of the Bloomingdale Homeowners Association

www.bloomingdalegazette.com



LAURA FRAZIER/Photo

Homeowners Jim Holland of Bloomingdale, Kay Fortin of River Hills and Larry McLendon of Fish Hawk Trails, are 3 of over 1,600 neighbors who signed a petition asking county commissioners to reinstate truck load limits on Lithia Pinecrest Rd.

## Bloomingdale, Fish Hawk, River Hills Want Truck Load Limits

**County commission to  
review request July 24**

By LAURA FRAZIER

Bloomingdale, Fish Hawk and River Hills residents say since Hillsborough County removed old load limit signs from Lithia Pinecrest last July, they've seen a significant increase in tanker truck traffic.

Larry McLendon, president of the Fish Hawk Trails homeowners association and former chairman of the Florida Trucking Association, said residents have collected

over 1,600 signatures asking county commissioners to reinstate the load limits, in effect prohibiting tankers from the road.

The Lithia Pinecrest neighbors say they are not opposed to all truck traffic, but that large tanker trucks carrying hazardous materials should travel on less densely populated, non-residential roads to protect public health, safety and convenience.

Bloomingdale Homeowners Association president Ted Grable said although Lithia Pinecrest Rd. does not fall within the community's boundaries, Bloomingdale resi-

See Truck, Page 6



### In This Issue:

- Water Woes, 3
- Inside Connections, 4
- Community Council, 9
- Restaurant Review, 11
- Commissioner's Corner, 13
- Letters, 17
- Manager's Report, 19
- Substation Notes, 21
- Yard of the Month Form, 22

### Featured Story:

## Target On Hold

see page 2

**Bloomingdale High Volunteer of the Year, see page 10**



## Hungry Howie's Pizza & Subs

### PIZZA • PASTA • SUBS WINGS • SALADS

SEE OUR SPECIALS ON PAGE 7

240284



MACK AUSTIN/Photo

A developer's plans to make changes that would allow a Target store to be built on this land next to the high school and new library have been delayed until next year.

# Developer Puts Target On Hold

By MACK AUSTIN

hood Development.

The proposed plan by a developer to build a Target department store next to Bloomingdale Senior High School has been delayed.

The planning commission was supposed to review the developer's request last month, but GBT Investments Inc delayed its plans to make changes to comply with the county's comprehensive growth plan until some time next year.

One reason for the delay is new land development regulations that county officials are presently working with - Neo-traditional Neighbor-

The new plan incorporates a neo-traditional neighborhood style village into proposed building projects. These projects utilize old-fashioned, pedestrian-friendly urban communities with stores, residences and offices mixed together.

Parking is in back of the buildings, and structures are built closer to the road.

Part of GBT's plan would involve having another road built perpendicular from Bloomingdale Ave. to Lithia-Pinecrest Rd., in effect creating another intersection on Bloomingdale near the high school and planned library.

The normal traffic on Bloomingdale Ave., combined with the new library's traffic and now more traffic from the Target project, would create another challenging traffic area.

The new regulations have a lot of merit when considering just how a community is developed.

Effective planning and growth management is much better than random building by developers who probably don't even live in our community or state.

What the residents of our community and in particular those who live on the south side of Bloomingdale Ave.

must consider is how all of this will affect them.

Also, we must note that putting a Target store right next to a high school would present its own set of unique problems for the school administration -as residents noted in 1999.

We all know that something is going to be built on the acreage next to the high school and new library.

We now have some time to take a serious look at what would be best in the long-range plans for our community.

Once the construction is completed, it's a done deal.

# Residents Spout Off About Water Woes

A Gazette Report

The Hillsborough County Commission on June 24 banned lawn watering through the month of August for residents of southeastern Hillsborough, including Brandon, Valrico, Riverview, Lithia and Sun City. Care to comment? Send your opinions and ideas to Letters@BloomingtonGazette.com. Here is a sample of letters we've received:

*lawn. What is supposed to happen to ours in the mean time? I promise you, I have spent several thousand dollars on my landscaping and I WILL NOT let it die out for the sake of a lawn that is just now on some designer's drawing board.*

*Do we have recourse, or are we becoming a dictatorial society here in our small part of Hillsborough County? I assume the people who put these laws in place are not planning to remain in their positions long.*

*I wonder if Fidel has watering bans in Havana?*

- Bloomingdale

*"It is certainly hard to believe that established homes and yards must now suffer to provide water for future home sites and future*

*"This (watering ban) has to be the most absurd idea this board has come up with yet. Enough is enough. What about all the new homes, apartment cities going up left and right? Why do we continue to be punished for the overgrowth allowed at full speed? We don't need all these new homes and dozens of new grocery stores. We don't have enough water, schools, and roads for these increases.*

*When will one of our representatives wake up and stand up for us?"*

- Bloomingdale

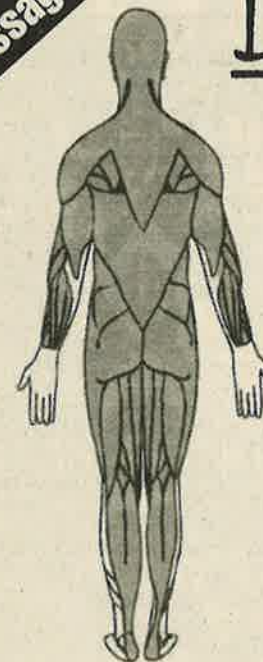
*"The newspapers reported today that water use in Hillsborough County increased 6*

*percent during the past 12 months while the other utilities experienced a decrease of 2.6 percent. They overlooked the major contributor to the water usage increase in East Hillsborough County - uncontrolled building growth. Conservation measures by residents in our part of the county will never keep pace with the water use required for new homes. The county must acquire additional water sources if it wants continued growth. And if we cannot acquire this water, we must bite the bullet and enact a moratorium on new homes, even if it makes the developers unhappy."*

- River Hills

E-Mail: [News@BloomingtonGazette.com](mailto:News@BloomingtonGazette.com)

Massage \$35/hr.



## Danita Kessner

Licensed Massage Therapist  
9 Years Experience



- Neuromuscular
- Sports Massage
- Trigger Point
- Stretching
- Relaxation
- Moist Heat
- TMJ
- STRESSED?
- Neck/Shoulder Pain?
- Backaches/Headaches?
- Sciatica?

# 662-9177

MA 15071

Therapeutic massage in the comfort of your home

SAY YOU SAW IT IN  
THE BLOOMINGDALE GAZETTE

## Your Inside Connections

### The Bloomingdale Homeowners Association, Inc.

3509 Bell Shoals Road, Valrico, FL 33594.

(813) 681-2051. Fax: (813) 651-1129

E-mail: [BHA@CyberRails.com](mailto:BHA@CyberRails.com)

Web Site: [www.BloomingtonGazette.com](http://www.BloomingtonGazette.com)

BHA meetings are at the community office on the 1st Monday of each month at 7 p.m.

**President** — Ted Grable  
**Vice President** — Joe Hickle  
**Treasurer** — Pam Liguori  
**Director** — Len Jasczak  
**Director** — Patricia Radel  
**Director** — Tony Diolosa  
**Director** — Steve Heckel  
**Director** — Cheryl Kehrmeyer  
**Director** — Michele Caballer  
**Director** — Joseph Grem

### Bloomington Special Taxing District

3509 Bell Shoals Rd., Valrico, FL 33594

(813) 684-6667

BSTD meetings are held at the community office on the 2nd Monday of each month at 7 p.m.

**President** — Thom Snelling

**Treasurer** — Don Cassels  
**Recording Secretary** — Alice Burleson  
**Trustee** — Russell Jones  
**Trustee** — David West  
**Trustee** — Dale Kahn  
**Trustee** — Myron Magedanz  
**Property Manager** — Al Devney

### Bloomington Mobile Watch Coordinator/Equipment Manager —

Tony Diolosa, 681-1146

**Treasurer** — Paul

Kelmer, 681-9701

**Patrol Member** —

Steven Heckel,

654-4266

**Patrol Member** — Brad Scharp, 643-5000

**Patrol Member** — Paul Warr, 685-7883



### Bloomington Oaks Special Taxing District

P.O. Box 3132, Brandon, FL 33509-3132. (813)

685-2817

BOSTD meetings are held at 3419 Cade Lane on the 2nd Monday of each month at 7:30 p.m.

**President** — Bill Grace  
**Treasurer** — Fred Englehart

## THE BLOOMINGDALE GAZETTE

The official publication of the BHA since 1980

3509 Bell Shoals Rd.

Valrico, FL 33594

(813) 681-2051

Fax: (813) 651-1129

E-Mail: [News@BloomingtonGazette.com](mailto:News@BloomingtonGazette.com)

**Executive Director** — Joe Liguori  
**Editor** — Laura Frazier  
**Photojournalist** — Mack Austin  
**Restaurant Critic** — Elton Dumont  
**Yard of the Month** — Rosie Trellis

Published by Sunbelt Newspapers — 1401 Oakfield Drive,  
 Brandon, FL 33511. (813) 689-7764

The Gazette is delivered free to Bloomingdale residents along with The Tampa Tribune on the 1st Saturday of each month.

**Publisher** — Carla Rockwell

**Advertising Manager** — Melonie Hall

## Cimino Parents, Officials Walk the Walk

A Gazette Report

County, school and law enforcement officials met with future Cimino Elementary School parents last month 6:45 a.m. at the school to walk the route students will use when the school opens this fall.

School officials said bus transportation will not be provided for children living less than two miles from the school, and completion of partial sidewalks near the school cannot be accomplished in the near future due to land acquisition issues. In order for sidewalks to be constructed, school officials said, land



LAURA FRAZIER/Photo

County traffic specialist Gary Tate and principal Sandra Frost, center, met with future Cimino Elementary School parents, Deputy Pete Maurer, left, and county safety specialist Ann Anderson, right, last month.

fronting 19 privately owned lots would have to be purchased by or donated to the county.

Coordination is in progress

to provide crossing guards in at least two positions on Culbreath Rd.

For general information

about the school, call principal Sandra Frost, 740-4450. For meeting and PTA information, call Debby Duncan, 230-1047.

**30 YEAR FIXED**  
**6.125%**  
 6.48% APR

**15 YEAR FIXED**  
**5.25%**  
 5.52% APR

**SMART LOAN**  
**3.5%**  
 6.21% APR

No Credit Score • No Income Verification  
 No Asset Verification  
 20% Down Payment Required

**LOT LOAN**  
**5.75%**  
 3/1 ARM

30 Year Term • No Balloon • 6.231 APR

FHA • VA • CONVENTIONAL • NEW CONSTRUCTION • LOT LOANS

# MORTGAGE RATES ARE STILL GREAT!



Lending Locally Since 1989 • Lowest Fixed Rates in Florida  
 4316 New River Hills Parkway • Valrico, Florida 33594

**REDUCED PAPERWORK SAME DAY APPROVAL**  
**CLOSE IN 10 DAYS**

Located at the entrance to River Hills Country Club

Call Tim Dunne at  
**654-1044**



APR based on \$150,000 loan amount. Rates and terms subject to change. Rates were current at printing date. Equal housing lender.



Photo courtesy Jim Kreinbrink

Four passengers in this Toyota were taken to Tampa General Hospital following a collision with a tanker truck June 8 at the corner of Lithia Pinecrest and Boyette roads. Another car vs. tanker accident occurred June 13 at the corner of Lithia and Coconut Grove.

### Trucks

From page 1

dents are affected by the status of the road. Grable said a number of homes within the community back up to Lithia Pinecrest, and a good deal of Bloomingdale residents use the community's Erindale Drive entrance, on the west side of Lithia Pinecrest.

"The BHA board

continues to object to any routing of trucks through residential areas, especially on unimproved roads like Lithia-Pinecrest, Boyette and Bell Shoals," Grable said.

"We also need to consider the fact that many of the trucks traveling on Lithia Pinecrest wind up on Bloomingdale Ave."

Erin Arbor resident Jim Holland encouraged his Bloomingdale neighbors to attend the meeting.

"Our homeowners association is providing free bus transportation to the meeting, so we hope anyone who's available during the day, especially home-

makers and retirees, will join us."

In addition to Lithia Pinecrest Rd., Holland is concerned about trucks on Bloomingdale Ave.

"The traffic count on Bloomingdale Ave. is already over capacity. As time

See Trucks, Page 8

### Petition Form

Date \_\_\_\_\_  
(Check one)

Sent by mail to:  
Hillsborough County Board of Commissioners  
2nd Floor, 601 E. Kennedy Blvd.  
Tampa, FL 33602

Sent by fax to Comm. Easterling - 272-7046; Norman - 272-7047; Scott - 272-7048; Storms - 272-7049; Hart - 272-7052; Platt - 272-7053; Frank - 272-7054.

Sent by e-mail form at:  
[www.hillsboroughcounty.org/mail/email.html](http://www.hillsboroughcounty.org/mail/email.html)

To: Hillsborough County Board of Commissioners  
Re: Lithia Pinecrest Rd. Truck Traffic Load Limits  
Subject: July 24, 2002 BOCC Hearing

As a Hillsborough County taxpayer, registered voter and resident of the greater Bloomingdale area, I, \_\_\_\_\_, residing at \_\_\_\_\_, for reasons of public

health, safety and convenience, am opposed to the use of unimproved roads and/or those in close proximity to high-density traffic and/or residential areas by tanker trucks hauling hazardous materials. I respectfully request that the Hillsborough County Commission, at its July 24, 2002's meeting, take action to prohibit said trucks from Lithia Pinecrest Rd. by any available means, including imposing load limits.

Signed, \_\_\_\_\_

Phone: \_\_\_\_\_

### LITHIA PINECREST RD. FAQ'S

When were load limits placed on the road?

In 1975, the Florida Secretary of Transportation placed a weight limit of 15,000 pounds per axle and 50,000 gross weight on the road from SR 60 in Brandon to the Polk County line.

When was Lithia Pinecrest put on the county's truck route?

The Board of County Commissioners voted to place the road on the truck route at a public hearing in 1994, with no restrictions beyond the standard 80,000 gross weight limit. County officials say the old weight limit signs were left standing as an oversight until July 2001.

Why were the load limit signs taken down last year?

At an April 3 public hearing, Bob Gordon, county director of engineering, said the signs were removed when truckers complained about being ticketed for the posted load limits. Gordon said he reviewed the status of the road, determined that there was no legal (engineering) reason to leave the signs in place, and had them removed.

How has traffic been affected since the load limit signs were taken down?

Residents say there has been a significant increase in big tanker traffic on Lithia Pinecrest Rd. and Bloomingdale Ave. Recent traffic counts and accident statistics were not immediately available from the sheriff department's county traffic coordinator. County officials will present new traffic studies to commissioners at a July 24 meeting, 2 p.m. at county center.

See FAQ's, Page 8

**Hungry Howie's Pizza & Subs**  
 819 W. Bloomingdale Ave. at Kings  
 684-0988  
 Open for Lunch Sat. & Sun.

**WE DELIVER**

<p><b>CROWD PLEAZER</b></p> <p>One Specialty Pizza &amp; One Pizza with 2-toppings</p> <p>2 Medium \$12.95          2 Large \$14.95          2 Ex. Large \$16.95</p> <p><b>Hungry Howie's Pizza &amp; Subs</b>          Delivery extra. Expires 7/31/02. Not valid with other coupons. (BG-5)</p>	<p><b>MIX &amp; MATCH</b></p> <p>Choose any 2 Favorite Meals:</p> <p>Medium 1-topping Pizza          Oven-Baked Sub • 10 Howie Wings          Large Chef Salad • Baked Pasta</p> <p><b>\$9.95</b></p> <p><b>Hungry Howie's Pizza &amp; Subs</b>          Delivery extra. Expires 7/31/02. Not valid with other coupons. (BG-5)</p>	<p><b>EXTRA LARGE</b></p> <p>Extra Large 1-topping Pizza</p> <p><b>\$7.95</b></p> <p><b>Hungry Howie's Pizza &amp; Subs</b>          Delivery extra. Expires 7/31/02. Not valid with other coupons. (BG-5)</p>	<p><b>CARRY-OUT SPECIAL</b></p> <p><b>WACKY WEDNESDAY</b></p> <p>One Large Cheese Pizza</p> <p><b>\$3.99</b> additional toppings \$1.05 each</p> <p><b>Hungry Howie's Pizza &amp; Subs</b>          Carry-out only. Expires 7/31/02. Not valid with other coupons. (BG-5)</p>
---	--	--	---

at participating stores

# Realtor Celebrates 3rd Anniversary

A Gazette Report

Locally owned real estate company, Michael Davis Realty, recently celebrated its third year in business.

Owner Michael Davis began his real estate career in Brandon 21 years ago.

Davis, a Bloomingdale resident, said he built his business on the philosophy of treating his clients the way he would want to be serviced

*"I believe taking care of clients' needs is the single most important concern in the real estate business."*

**MICHAEL DAVIS**  
Michael Davis Realty

if he were buying or selling a home.

"I believe taking care of clients' needs is the single most important concern in the real estate business.

Honesty, ethics, and integrity are the foundation of our company," Davis said.

Michael Davis Realty has doubled its growth in licensed realtors since opening at 130 E. Bloomingdale Ave. in May 1999.

For information call 662-2600.



Photo courtesy Michael Davis Realty  
Michael and Judy Davis

## Trucks

From page 6

goes on, it's only going to get worse. When a big tractor-trailer carrying hazardous waste collides with an automobile, it's a serious mismatch. The persons in the automobile are going to bear the brunt, either by death or serious injury."

River Hills resident and past homeowners association president Claude "Frenchy" Fortin said what's good for Lithia Pinecrest Rd. is good for Bloomingdale Ave.

"Eliminate the transport of hazardous materials on Lithia Pinecrest Rd. and you'll eliminate it from Bloomingdale Ave., too. If the tankers can't run on Lithia, they won't run on

Bloomingdale. There would be nowhere for them to go, and they'd have to go back to using the same alternate roads they've used for the past 25 years - Hwy. 60, Hwy. 39 and County Rd. 672," Fortin said.

To sign up for free transportation to the July 24, 2 p.m. hearing, call the BHA office at 681-2051 with your name, address and phone number.

In addition to attending the meeting, residents may submit the petition form on page 6 to county commissioners by mail, fax or e-mail. The form is also available online at [www.BloomingtondaleGazette.com](http://www.BloomingtondaleGazette.com).

## FAQ's

From page 6

The reports are expected to detail the volume, destination, routes and load content of tanker trucks traveling on Lithia Pinecrest Rd.

**Where do the trucks originate from and what is their destination?**

A majority of the large tanker trucks on Lithia Pinecrest and Bloomingdale Ave. are traveling between the Port of Tampa and phosphate mines near the Polk County Line, about 9 miles south of Fish Hawk Blvd.

**What are the tankers carrying?**

Trucks traveling between the port and mines carry chemicals used in the mining and production of phosphates, including molten sulfur, anhydrous ammonia, sulphuric acid, ammonium nitrate and sodium hydroxide solution. Most of the phosphate mined in Hillsborough County is used to produce crop fertilizer and phosphate rock, a mineral used in products ranging from animal feed to detergents and soft drinks. IMC-Agrico, Inc., near the Polk County line on SR 39, is advertised as the world's largest producer of phosphate fertilizer and phosphate rock.

**What are the implications of a chemical spill as a result of a traffic accident involving a tanker?**

According to McLendon, J. J. Keller's Emergency Response Guide, an industry standard, indicates inhalation and/or physical contact with some of the chemicals in question can be fatal.

Evacuation recommendations vary, with some requiring a 1-mile radius evacuation.

**Does the county have the authority to impose load limits or remove Lithia Pinecrest from the truck route?**

At the April 3 commission meeting, the board asked asst. county attorney Donna Wysong if local government has the authority to impose weight limit restrictions on truck routes for reasons other than structural inadequacies.

Wysong said to commissioners, "Under the statutes... it does give you as the local governmental agency the power to regulate truck traffic or any other kind of traffic... to provide for the public safety and convenience on the highways... by reason of traffic density, intensive use... or other reasons of public safety and convenience."

**Has there been an increase in accidents involving tankers on Lithia Pinecrest since the load limits were lifted?**

Detailed accident reports were not immediately available from the sheriff's department. Corp. Jim Lewis, traffic coordinator for southern Hillsborough, confirmed resident's reports of two tanker truck vs. car accidents in June, one at the corner of Boyette Rd. on June 8 and one at the corner of Coconut Grove on June 13. Lewis said he would compile and provide detailed accident reports for the Gazette this week. Check [www.BloomingtondaleGazette.com](http://www.BloomingtondaleGazette.com) for updates.

# Group Lauds Middle, High School Girls' Achievements

Bloomingdale's Nicolle Rodriguez and Burns' Caitlin Lewis, Jessica Traurig among honorees

A Gazette Report

The American Association of University Women honored the academic achievements of 26 Brandon area students during the group's ninth annual recognition tea May 11 at Brandon Community Center.

The organization's Brandon branch recognized Brandon area middle and high school students who earned the highest grade point average in math or science.

Twelfth grade recipients received a \$200 U. S. savings bond. Eighth grade girls were presented with a \$100 savings bond. Since the program's inception in 1994, the

association has awarded \$26,200 in U. S. savings bonds to 175 Brandon area girls.

Eighth grade students who received the Excellence in Math award are Kimberly Brewer, Katherine Fotopoulos, Melissa Miller, Laura Molander, Jessica Plante and Jessica Traurig. Jennie Funk, Jennifer Kane, Caitlin Lewis, Sara Marr and Keri Ramos received the Excellence in Science award.

Twelfth grade students who received the Excellence in Math award are Sandra Latimer, My Le, Amanda O'Connor, Guergana Petkova, Megan Reynolds, Nicolle Rodriguez and Melissa Schultz. Anne Cain, Erin Cantwell, Taeyjuana Curry, Angela Heintz, Samantha Huntley, Nicolle Rodriguez, Kristin Scheirer and Cortney Taylor earned the Excellence in Science award.



Twelfth grade recipients received a \$200 U. S. savings bond. Photos courtesy AAUW



Eighth grade academic achievement award winners received a \$100 U. S. savings bond. Photos courtesy AAUW

## Community Council Update

A Bloomingdale Area Community Council Report

The Bloomingdale Area Community Council is made up of volunteers from area subdivisions who work directly with local law enforcement and county departments to research local issues and concerns. The council meets monthly to discuss current issues that have been brought to the attention of a council member, community resource deputy Pete Maurer and community service officer Sandy Capitano.

Council members were privileged to have a very prominent leader from the Hillsborough County Sheriff's Office as their guest, Chief Deputy David Gee, at the June meeting. Chief Deputy Gee has the very critical position of being second in command under Sheriff Cal Henderson. Having someone in such an important position take the time to visit and work with our coun-



MACK AUSTIN/PHOTO  
Deputy David Gee, left, pictured with Bloomingdale Deputy Pete Maurer, briefed community council members on current activities in the sheriff's office.

cil says a lot about the genuine concern our law enforcement leaders have for making our community safe and secure.

Chief Deputy Gee began the meeting by sharing his very unique background. He began his career in law enforcement as a teenager in the sheriff's Explorer program. At the time of his hiring, he was the youngest deputy ever hired. Gee graduated from Brandon High

See Community, Page 11

**NOW ENROLLING FOR SUMMER**

# When school is out Huntington is in!

**If you are unhappy with your child's report card, the time to take action is now.**

If your child has been struggling with schoolwork, the summer is an excellent time to get ahead for the next school year. Huntington Learning Center can help. Our dedicated teachers can pinpoint your child's strengths and weaknesses and tailor a program of instruction to meet his or her needs. Call Huntington today. Your child can learn.

**Huntington LEARNING CENTER**  
www.huntingtonlearning.com

**\$50 OFF Diagnostic Evaluation**

BRANDON (813) 681-1500    CARROLLWOOD (813) 908-1000    PALM HARBOR (727) 937-8400

Individual testing and tutoring in reading, study skills, writing, phonics, spelling, math and SAT prep.

## Bloomingtondale Teacher Is Volunteer Of The Year

By DIANE CLARE  
President, Bloomingtondale High PTSA  
and Hillsborough County Council of PTSA's

A true volunteer gives more than their time; they give a part of themselves.

Each year, the Bloomingtondale PTSA honors a volunteer for their hard work, time and that special piece of themselves they give. Our 2002-03 Volunteer of the Year is Mr. Edward Lucker, a history teacher at Bloomingtondale High.

Mr. Lucker acts as teacher liaison for the PTSA board, but his most important job for the organization has been to sponsor the Bloom-



Bloomingtondale High Volunteer of the Year Ed Lucker and PTSA president Diane Clare display the school's commemorative volunteer plaque, to which Lucker's name was added this year.

ingtondale Students Helping Society student service club.

In addition to his teaching duties, Mr. Lucker has taken the club from 30 or so members the first year to 65 the second. The club meets once a month and has accomplished a number of commu-

nity projects this year including providing Christmas gifts for migrant children at Camp Christina.

Though he has help from the PTSA, Mr. Lucker has taken most of the preparation and club time on himself, as well as being ready to

assist in any project of the PTSA and attend the necessary meetings.

The students, parents and faculty of Bloomingtondale High extend our sincere thanks and congratulations to Mr. Lucker, our 2002-03 Volunteer of the Year.

LAURA FRAZIER/Photo

## Serving Individual Investors Since 1871

- |                       |                    |
|-----------------------|--------------------|
| Retirement Plans      | Life Insurance     |
| Mutual funds          | 401K Review        |
| Bonds/Stocks          | IRAs/CDs           |
| Government Securities | Money market funds |



And now serving coffee in Valrico/Brandon

Join me for our monthly round table discussion at Dan's office on Friday, July 19 at 9:00 a.m. We'll share ideas about current events, the economy, investing and a few cups of coffee. This month's topic is Life Insurance. The coffee's on me!



**Dan Sammons, CLU**  
(Just Off Lithia-Pinecrest next to "Car Wash on The Greens")  
3616 Erindale Drive  
Serving Brandon,  
Bloomingtondale & Valrico  
Bus: 813-681-1462

**Edward Jones**  
Serving Individual Investors Since 1871

253374

## John Moore/Bloomingtondale Rezoning Hearing This Week

By LAURA FRAZIER

The owner of 5.9 acres of vacant land currently listed for sale at the corner of Bloomingtondale Ave. and John Moore Rd. will present a land-usage rezoning request to county officials this week.

County planner Dyan Backe said the request is for a planned development with 22,000 sq.ft. of general commercial use buildings. Under county zoning guidelines, general commercial usages may include typical retail and general business, financial institutions, neighborhood convenience stores, car wash facilities and supermarkets.

The property is presently zoned ASC, which permits both agricultural usage and/or 1 conventional single family home per acre.

A zoning hearing master is scheduled to review the

request at a July 8 public hearing. At press time, the property owner had asked for a July 9 continuance. If the hearing master gives preliminary approval to the request, the matter will be brought before the Board of County Commissioners at a later date for a final decision.

Residents opposed to the rezoning request may submit a letter of objection by fax to (813) 272-5348.

Letters personalized with the sender's name and address must include the zoning request number (RZ-02-0797), and must be received at least two days prior to the hearing to become a party of record. Residents may also speak before the zoning hearing master at the meeting.

To confirm hearing dates and times, or for more information, call Backe at (813) 307-4507.

## Restaurant Review

By ELTON DUMONT  
Exclusive to The Bloomingtondale Gazette

**Big City Tavern  
Centro Ybor  
247-3000**

A visit to Ybor City's Big City Tavern is like a trip to a fine restaurant in the French Quarter of The Big Easy. If you haven't been to Ybor City in a while, you haven't experienced Centro Ybor either. Getting to the Big City Tavern means passing through the new Centro Ybor district, the two story area that includes Muvico movie theatre, the Improv comedy theatre, a museum, various apparel and accessory shops like and restaurants and cafes like Adobe Gila's, Hopscotch Lounge and our new favorite, the Big City Tavern.

A ride up on the Centro Ybor escalator to Big City Tavern was wonderful to see all the sights on a recent Saturday night. Upon entering the restaurant, you can't help but be struck by the large, cavernous room of wood and brick. The long (50 feet down one side) bar, old fashioned tin ceiling (at least 15 feet high), floor to ceiling windows, huge floral arrangements and balcony tables overlooking 7th Ave., coupled with the dark wood motif, is definitely reminiscent of Bourbon Street in New Orleans. They offer lunch, dinner and late night menus. We selected from the a la carte dinner menu.

Appetizers include Lobster and Carrot Soup (\$4.95),

Three Bruschettas, Tomato-Basil, Olive and Asparagus, Goat Cheese and Roasted Peppers (\$7.95), Cheese Plate, Brie, Cambazola, Balsamic Strawberries, Crispy Baguette, and Candied Walnuts (\$9.95), Lobster, Shrimp and Shitake Pot Stickers, Yuzu Dipping Sauce (\$9.95), as well as coconut shrimp, grilled pizzeta, grilled chicken, littleneck clams in white wine or crab cakes.

Salads include Tomato, Mozzarella, Radicchio with Parmesan Cookie, Balsamic Vinaigrette (\$8.95), Escarole and Baby Market Greens with Maytag Blue Cheese, Red and Green Apples, Walnut-Chive Oil Vinaigrette (\$7.95) plus Shrimp with Gorgonzola, Spinach Grilled Chicken, Seared Tuna and Frisee. We split the Salad of Baby Market Greens, Tomatoes, and Croutons, with wonderful Dijon-Shallot Vinaigrette for only \$4.95. Enough for two, it was excellent, and they served it on two separate plates since we indicated we would be splitting it.

We skipped the Pasta Bowl entrees, which included Angel Hair, Rigatoni with Chicken, Spaghetti with Shrimp, Tortellini filled with salmon, crab and shrimp, and Lasagna with Bolognese Sauce, all from \$12.95 - \$18.95.

The specials were attractive, but we ordered from the menu. My wife selected the Grilled Pork Chop with Mustard Seed Spaetzel, Apple Vegetable Ragout, White Wine Sauce and market vegetables (\$18.95). It turned

out to be a thick, double boned, extremely tender chop that was cooked to perfection. The vegetables included carrots, squash, eggplant and onions with a large sprig of Rosemary.

I chose the Pan Fried North Carolina Trout with brown butter, almonds, pancetta, sage, French fries and vegetables (\$16.95). My vegetables included mashed sweet potatoes and German style red cabbage. It was a uniquely delicious meal. The trout was flaky and spicy, while the red cabbage was so good I asked for a small additional plate of it on the side. Other entrees include Skillet Roasted Salmon, Veal Scaloppine, Veal Saltimboca, Roasted Half Chicken, Prime NY Strip or a Grilled Tuna to name a few, all from \$14.95 - \$28.

The dessert menu was so impressive, and even proudly listed the name of the dessert chef on the front of the menu.

Some desserts offered include Hot Apple Strudel, Creme Brulee, NY Cheesecake, Warm Chocolate Souffle Cake (baked to order) and classic Tiramisu, all from 5.50 to \$7. There is also a special platter with a little of all the desserts that will satisfy up to four diners for only \$16.

Big City Tavern has live Jazz on Wednesday night from 7:30 - 11:30 p.m. with no cover charge. Thursday night is Prime Rib night at \$18.95. Our total (tax, title and license) was right at \$57. Well worth it for that special occasion.

Rating based on 5 stars:  
Food ★★★★★  
Service ★★★★★  
Ambience ★★★★★  
Overall ★★★★★

Until we eat again,  
**Elton Dumont**

## Community

From page 9

School and later completed a degree in mathematics from the University of Tampa.

Talk about history. Gee recalled his early memories of Bloomingtondale - "cars drag racing on Bell Shoals, only 300 members in the sheriff's office, just two deputies assigned to Brandon and only two radio channels to work with."

There are now over 3000 members in the sheriff's office.

Gee said overall the crime rate in the Bloomingtondale community is low. Part of this is attributed to the active role played by members of the community involved in programs like neighborhood

See Community, Page 16

255538

# Sonny's

## TIRE AND AUTOMOTIVE

Bloomingtondale

*Friendly Dependable Service • We Work Hard to Earn Your Trust!!*

### Thanks for keeping this great nation moving...

- Imported & Domestic • Diagnostic
- Scheduled Maintenance • Tires Rotation
- Brakes • Wheel Alignment • Air Conditioning

Carl, Fredo, Mike and Danny are ready to serve you.

10312 Bloomingtondale Ave., West

# 626-4556

Family Owned and Operated

See Community, Page 16

**Thanks To Mrs. Fix-It,  
Home Depot**

For the last several months Kellie Fisher, a Bloomington resident and Mrs. Fix-It, coordinated a series of home improvement seminars sponsored by The Home Depot of Valrico and the Bloomington Homeowners Association. Attendees gained a wealth of home repair and improvement information, and many walked away with door prizes. Special thanks to Kellie and to The Home Depot professionals like Barry Brinson, pictured, for sharing their time and talents.



MACK AUSTIN/Photo

**Public Access Brings Public Debate**

A Gazette Report

The following comments were posted on our "Public Access TV Debate" poll on [www.BloomingtonGazette.com](http://www.BloomingtonGazette.com). As of June 26, out of 68

poll entries tallied, 43 said they watch public access TV, while 25 said they do not; 49 support public funding of the station, while 18 do not, and 39 said explicit content is acceptable, while 28 said it is

not. All south Brandon residents are invited to participate in the poll. Comments are posted anonymously.

"Why single out public access when so many other television shows do the same? If this offends, then change the channel, but don't cut the only public access vehicle available."

"There are enough sexually explicit movies and TV show for our children to watch right now. This Public Access station is a disgrace and nothing of any social value is on when most people are home to watch it. I don't work 50-60 hours a week to have my tax dollars spent on the trash that I have seen on that station."

"I'm surprised in this day

and age we're still having this discussion. If you don't like what's on, don't watch."

"I commend Ronda Storms for taking on this issue and I hope she wins."

"Unless there is some way to restrict the programming to include broadcasts only by religious, community and non-profit organizations that adhere to public decency standards, I do not want to pay for public access TV broadcasts, most of which are insulting garbage."

"I resent Storms using this forum to enhance her political position."

"I do not believe government should tax individuals in order to give others (private citizens) a public forum."

**Got Good Credit  
Save Up to 30%**

with an additional discount on your auto insurance

To See If You Qualify Call  
**Dave Haney  
INSURANCE  
689-7169  
Fax 689-6700**



254151

**Commissioner's Corner**

**Board To Review Lithia Pinecrest Rd. Stats July 24**

Public invited to comment

By COUNTY COMMISSIONER  
RONDA STORMS

My office has been receiving many complaints from residents regarding the removal of weight restriction signs from Lithia Pinecrest Road.

Lithia Pinecrest Rd. has always been open to truck traffic and in 1994, a previous Board of County Commissioners designated it as a "truck route" and included it in the county's overall system of roads to be used to transport goods.

In the summer of 2001, the county made an engineering assessment of the 50,000-pound weight limit restriction on Lithia Pinecrest Road. It was determined that no current engineering or legal justification existed for posting weight limitations on the road.

The road was deemed safe to carry trucks weighing up to 80,000 pounds from

an engineering standpoint, and therefore the weight limit signs were removed.

After many complaints from residents, the current Board of County Commissioners voted in April of this year to have county staff study whether the weight restriction signs should be re-installed. This report, along with information from the county attorney's office, will be given at the July 24, 2002 board meeting.

The Public Works Department's traffic section recently completed speed zone studies in accordance with the Federal Highway Administration's manual on uniform traffic control devices.

The results of these studies determined that the speed limit on a section of Lithia Pinecrest Road should be reduced from 55 mph to 45 mph. This new speed zone limit of from Boyette Road to Keysville Road has already been implemented.

I encourage you to come and express your views at the July 24 board meeting.

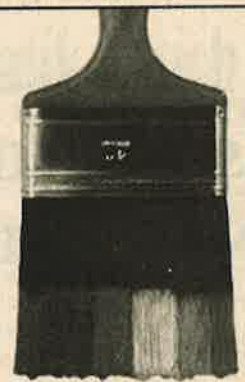


Commissioner Ronda Storms

**Burns Middle Summer Reading List**

During the first two weeks of the new school year, any Burns Middle School student who passes an Accelerated Reader test on one of the following books will receive an incentive award.

Title	Author
"Among the Hidden"	Haddix
"A Long Way from Chicago"	Peck
"Blue Willow"	Gates
"Bud, Not Buddy"	Curtis
"Cheaper by the Dozen"	E. Gilbreth
"Gammagi Cup"	Kendall
"Gone-Away Lake"	Enright
"Hatchet"	Paulsen
"Holes"	Sachar
"Hope Was There"	Bauer
"Incident at Hawks Hill"	Eckert
"Jackaroo"	Voigt
"Joey Pigza Loses Control"	Gantos
"Lily's Crossing"	Giff
"My Dog Skip"	Morris
"Nothing but the Truth"	Avi
"Rascal"	North
"Roller Skates"	Sawyer
"Root Cellar"	Lunn
"6th Grade Can Really Kill You"	DeClements
"Sounder"	Armstrong
"Sun & Spoon"	Henkes
"The Killer's Cousin"	Werlin
"The View from Saturday"	Konigsburg
"The Watcher"	Howe
"Wheel on the School"	DeJong
"Wizard of Oz"	Baum



Tom Hayden

**Painting  
& Pressure Washing**

Residential & Commercial **FREE Estimates**

**654-1313  
Fax 653-2491**

Bonded-Licensed-Insured #PA 4506

Let Us Color Your World!



The parade began on Cold Creek Dr. and made its way through the neighborhood.

Photos courtesy Windsor Woods neighbors

# Windsor Woods' Patriotic Parade

A Gazette Report

Families in the Windsor Woods section of Bloomingdale East held a Memorial Day Parade in May. Dozens of children and parents decorated bikes, scooters, wagons and themselves in red, white and blue regalia and paraded throughout the subdivision. After the parade, the families fired up their grills and had a neighborhood barbeque.



Ryan Kehrmeier and Jordan Pearson, rode the parade route in style.

# School Completes Inaugural Year

By D'ANN WHITE

With Principal Mary Liddy personally ringing the bell to signal the end of school, St. Stephen Catholic School in Riverview completed its inaugural year May 23.

The \$4 million, 57,000-square-foot school opened Aug. 8 on a 38-acre site donated to the school with grades kindergarten through fifth as well as two early childhood classes.

Working with the Rev. Patrick Irwin, pastor of St. Stephen Catholic Church on Bell Shoals Rd., Liddy came on board seven months earlier to hire staff, outfit the school and coordinate nearly every other detail of the school's completion.

It was a formidable task, recalled Irwin, as he waved goodbye to the students on the last day of the school year.

"A lot of work went into this school, and still goes into it," he said. "It's an ongoing process. Each year, the school will get a little better."

The school plans to add one grade each year up to eighth grade.

The school now has seven full-time teachers and six part-time teachers, including music, art and foreign language teachers, as well as four part-time teacher assistants. In addition, Liddy brought on board custodial staff and a media specialist, administrative assistant, physical education teacher, guidance counselor and nurse.

In the fall, she'll open her school with an assistant principal.

The school's library now has 2,353 books and 30 computers, and all classes, as well as the teacher planning



D'ANN WHITE/Photo

School custodian Chris Stockelman, left, associate pastor Rev. Paul Pecchie and Principal Marilyn Liddy ring large brass bells to signal the end of the school year.

areas, have Internet-accessible computers.

The school formed a chorus, the Mustang Chorale, which performed at two school wide productions. And the fourth- and fifth-grade students, under the direction of first-grade teacher Kate Cusumano and parents Kathleen Kennedy Hanson and Joann Mannix, started their own newspaper, the Mustang Monthly.

Cusumano also coached the school's two Odyssey of the Mind teams, something she had done for five years at Lithia Springs Elementary. The primary team, with students from kindergarten through second grade, went to state competition.

"It's been a very busy year for us," Liddy said.

She said it would have been a lot busier were it not for her parent and parish volunteers who manned the car line, served lunch and served on the Parent-Teacher-Community Organization and the School Advisory Board.

Roxanne Salabarria served as vice president of the PTCO this year and is president-elect for the 2002-03 year.

"I think the year went wonderfully," she said. "Better than I thought."

Through a series of fundraisers — including collecting Campbell's Soup labels and Bostops for Education and

selling candy bars, candles and baked goods — the organization raised more than \$17,000. The money paid for classroom grants, lettering for the front of the school, snacks and medals for children's field days, teacher and principal appreciation

gifts and Odyssey of the Mind expenses.

"It was neat to be involved with the school's first PTCO and help set the path for the future," Salabarria said.

The school will reopen in August with 230 students.

**Majik Touch Cleaners**  
"EXPERIENCE THE DIFFERENCE"

- Apollo Beach 220 Apollo Beach Blvd, 645-1499
- Bloomingdale 3513 Bell Shoals Rd, 654-9292
- Bloomingdale 815 E. Bloomingdale, 681-8700
- Brandon 717 W. Lumsden, 654-9541
- Brandon 11393 Causeway Blvd, 643-6944
- Lithia 16739 Fishhawk Blvd, 654-7991
- Providence 1983 Lumsden Rd, 654-4423
- Seifner 1515 S. Parson Ave., 684-5897
- Bloomingdale 4344 Bell Shoals, 689-9176
- Bloomingdale 3248 Lithia-Pinecrest, 654-8113
- Brandon 913 W. Brandon Blvd, 684-4499
- N. Brandon 213 Kingsway Ave, 653-4535
- Plant City 2621 Thonotosassa Rd, 752-6631
- Riverview 11697 Boyette Rd, 672-1832
- Valrico 1985 E. Brandon Blvd, 654-2324

<p><b>\$ 1.10</b> EACH</p> <p><b>SHIRTS LAUNDERED</b> Valid on Incoming Orders Only - With \$5.00 Minimum Dry Cleaning Order, No exceptions, Limit 10. Blouses, Polo &amp; Boxed Shirts extra <b>COUPON EXPIRES 6/1/02</b></p>	<p><b>\$ 5.00</b> OFF</p> <p><b>ANY DRYCLEANING ORDER OVER \$25</b> Valid on Incoming Orders Only - No exceptions. Valid only w/ coupon, not valid w/ other coupons <b>COUPON EXPIRES 6/1/02</b></p>
<p><b>\$ 3.00</b> OFF</p> <p><b>ANY DRYCLEANING ORDER OVER \$15</b> Valid on Incoming Orders Only - No exceptions. Valid only w/ coupon, not valid w/ other coupons <b>COUPON EXPIRES 6/1/02</b></p>	<p><b>20% OFF</b></p> <p><b>WEDDING GOWN, DRAPERY CLEANING, BEDSPREADS, COMFORTERS, BLANKETS, ALTERATIONS</b> Valid on Incoming Orders Only - No exceptions. Valid only w/ coupon, not valid w/ other coupons <b>COUPON EXPIRES 6/1/02</b></p>

255364





MACK AUSTIN/Photo

Bloomington residents know you take your chances when you try to turn left off Erindale onto Lithia-Pinecrest Rd.

## Erindale, Fish Hawk Intersections Need Improvements

County narrows priority list down to 150 crossroads

By MACK AUSTIN

We've all heard the term "dangerous intersection." It usually comes from hearing about an accident or personally having a close call. Just what makes an intersection dangerous? Bad drivers are at the top of the list - those that speed, run red lights and don't yield the right of way.

Hillsborough County's public works dept. is constantly faced with working to improve intersections throughout the county. Limited funds are usually the

main roadblock, coupled with unbelievable growth and development. The public works dept. faces a never-ending task.

They took a major step last year towards improving the system by formalizing procedures for prioritizing intersection improvements. They began working with a consulting firm to take this major step and to develop a master list of prioritized intersections.

Initially, intersections were screened based on number of accidents occurring at each junction. With input from county staff and public meetings, a list of 300 inter-

sections was developed. In fact, before the recent widening was completed, the intersection of Bell Shoals Rd. and Bloomingdale Ave. was on the list. It was number 2 on the list for a while.

Those intersections identified as having the highest rate of accidents were then selected for the initial list of 150 to be considered for improvements. Adding in more criteria such as daily traffic, turning movements and other required data dropped the list to around 100.

Public works is now working jointly with the Florida Dept. of Transportation to

further fine-tune the list. Two public meetings were held in June to get input from residents. A final list will be presented to county commissioners in July or August. The list will be updated annually.

Two of our local intersections made the list - Erindale Ave. at Lithia-Pinecrest Road and Fish Hawk Blvd. at Lithia-Pinecrest Road.

Better driving can help improve the safety at our intersections as much or more than any other special measures.

Think about this the next time you come to one of our major intersections.

### Community

From page 11

crime watch, mobile watch and the community resource deputy program.

Gee briefed council members on programs and concerns the sheriff's office is currently working on.

The first is the sheriff's crime information strategy system, in which local commanders are required to stay up to date on all criminal

activities they are responsible for.

The goal is, "to make the sheriff's office a better agency, make better use of our resources and to improve communication and coordination," Gee said.

Next he covered the many changes that have occurred since 9/11 within the sheriff's office including the reassign-

ments of officers to port security, the losses to active duty, and the upcoming losses of members in the Florida retirement system.

Gee said, "Even with all of the changes and more to come, our goal remains to provide our citizens with the most efficient, best organized and dedicated law enforcement we can."

The Bloomingdale Area Community Council greatly appreciates Chief Deputy Gee taking the time from his extremely busy schedule to work with them.

The council is ready and willing to assist in any way work together with the sheriff's office in making our community a safe and secure place to live.

### Letters

Send letters to Editor, The Bloomingdale Gazette, 3509 Bell Shoals Rd., Valrico, FL 33594, or e-mail to Letters@BloomingdaleGazette.com. All letters are subject to editing.

### Road Rules

Dear Editor,  
To the resident who wrote to the Gazette (June 2002) who sees the need for a Fairway Manors neighborhood association, you are not alone! What can we do about football, baseball and hockey games being played in the streets in front of our homes? The games usually end up on people's lawns, damaging flowers, plants and shrubs, not to mention the fact that they are blocking the streets. It's just a matter of time before someone's vehicle, window or home is damaged. We have two parks in the area for these activities; the streets are no place for these. And now, not only do we have drivers driving through here at high rates of speed, we have become a raceway for go-carts. Not only do the carts pose a safety threat - they are illegal. When did these things start being allowed, and what can be done to stop them? Do we still have a Mobile Watch?

**Name Withheld  
Fairway Manors**

*Mobile Watch volunteers patrol many areas of Bloomingdale nightly to observe and report illegal or suspicious activity to the sheriff's dept. Volunteers are currently needed in several sections of*

*Bloomington East and West. For information, call coordinator Tony Diolosa, 681-1146.*

*To report illegal use of motorized vehicles, trespassing or nuisances, call the Bloomingdale substation weekdays 9 a.m. - 5 p.m., 635-8040. After hours, call the sheriff's non-emergency number, 247-8555.*

*Please feel free to attend a Bloomingdale Homeowners Association meeting, on the first Monday of each month, 7 p.m. at 3509 Bell Shoals Rd. BHA volunteers can help you and your neighbors address specific issues or get started in forming your own association if desired. The next meeting is Monday, July 1. Information: 681-2051.*

### Democratic Campaign

Dear Citizens,  
Once again we are in an election year where we will decide who we will trust to lead this community in the 21st century. Who better than a decorated, proud and distinguished military veteran who has served his country faithfully for over 16 years?

I am asking for your support in my bid to become the first Democrat in nearly twenty years to win the election for Hillsborough County Commissioner for District 4.

I am ready to change the way Hillsborough County decides its criteria for new housing developments. I want to ensure our schools, roads, police and fire depart-

ments can handle the increased demand before we approve any new developments. I have innovative ideas on how to better market the public transportation system to increase riders and make it more accessible. With two children of my own in the public school system, I am a strong supporter of less crowded schools and a county commission that is mandated to consult with the school board on issues affecting the population of our schools. In addition, I believe we should protect our environment and water supplies for our future generations.

Please contact me at 643-9669 with your generous support, and thank you again.

**Tony Pawlisz  
Candidate for County  
Commission District IV**

*Ed. Note: Pawlisz' opponents for the District IV seat are incumbent Comm. Ronda*



Tony Pawlisz

*Storms (R), Willens Levasseur (R), and Arlene Waldron (R). District IV includes Brandon, Valrico, Riverview, Plant City and Sun City. The primary election takes place Sept. 10, the general election will be held Tuesday, Nov. 5. For more information, visit www.votehillsborough.org or call 272-5850.*

## Therapeutic Skin Care

### Repair Your Skin's Health and Beauty

Our therapeutic treatments safely and gently restore damaged skin using the best paramedical techniques available. None of our treatments require any type of sedation or significant recuperation.



FREE  
Consultation

### Microdermabrasion

A non-invasive, non-chemical process that uses a highly controlled spray of inert crystals to remove the outer layers of exposed skin, stimulating cellular re-growth and revealing the younger, tighter and more radiant skin underneath.

Treats skin conditions and imperfections such as age spots, sun damage, acne scars, fine line, wrinkles and more.

Regularly \$100 now \$50

Alon Clinical Skin Care and Acne Clinic

Cristene Haynes, CME  
Clinic Director

F. Ojeda, MD  
Medical Consultant

651-4111

323 E Robertson St.  
Brandon, FL 33511

Limited Time Offer  
Credit cards accepted

Look for your  
neighborhood news  
The Bloomingdale  
Gazette



MACK AUSTIN/Photos

Repairs or construction of large areas of sidewalks like this one on Bell Shoals Rd. requires the hiring of a contractor. The Public Works South Service Unit can make minor repairs.

## Canoga Park, Bell Shoals Sidewalks Planned

By Mack Austin

They are everywhere, miles and miles of them - sidewalks. Most of us don't use them as much as we should to go for nice long walks. But they are a very critical part of our community. They are the safest routes for school kids to take to school, for exercise enthusiasts to take their long walks or for anyone wanting to stay away from the traffic.

Sidewalks are very expensive. The county or the school board can't just hire a contractor or tell public works to install sidewalks. It takes detailed planning involving the purchase of right of ways, coordinating with utility companies, funding for the contract and covering all the engineering requirements.

Coordinating all phases of sidewalk installation is so critical and involved that the county now has a sidewalk program coordinator responsible for organizing, coordinating and prioritizing the installation and repair of sidewalks throughout the entire county.

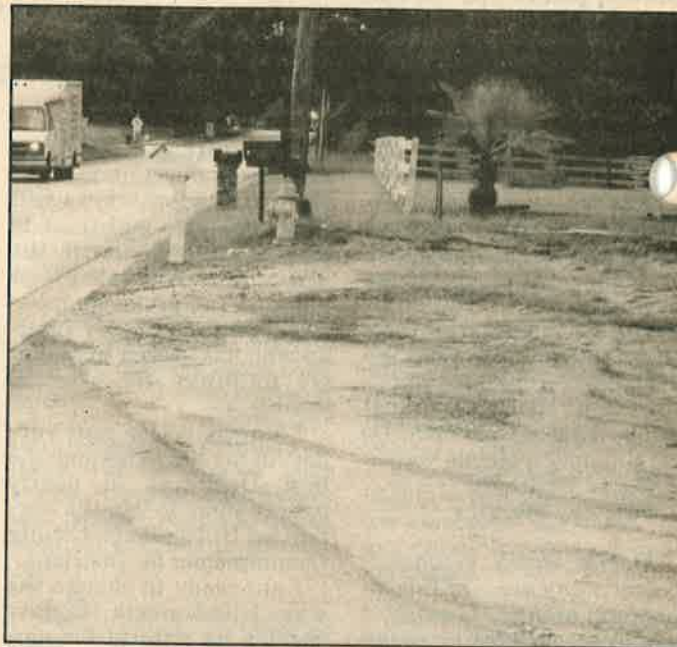
Some minor repairs are

done by public work's South Service Unit, but large projects like the one started last month on Bell Shoals Rd. requires the hiring of a contractor.

A good plan for a new residential development or school would normally include the installation of sidewalks as part of the other construction. But many times this doesn't happen. One example is the critical need for sidewalks near the new Cimino Elementary School on Culbreath Ave.

Trying to get the "bare spots" connected after primary construction has been completed can be a long, drawn-out process. Since 1996, Tim Golden, a concerned parent and active member of the Bloomingdale Area Community Council, has been patiently calling, coordinating, and working to have sidewalks either completed or installed throughout Bloomingdale.

Finally, it looks like Tim's hard work has paid off. He recently received correspondence from the county's sidewalk coordinator showing plans for some long-awaited



Parents and kids who need sidewalks connecting their routes to Cimino Elementary School have voiced their concerns to school and county officials.

sidewalks to be installed in Bloomingdale. Installation of sidewalks from Rosemead Ln. to Garnet Dr. along Canoga Park Dr. and Bell Shoals Rd. is scheduled for this summer. One of these areas is the critical section of missing sidewalk near the Culbreath Recreation Center. Kids have had to walk in the street for a long time.

Special thanks to Tim for his determination and hard

work from all the residents and especially the parents and kids who need these sidewalks. Also to all of the county workers involved in making the needs and plans become a reality. We know their job is never-ending and do appreciate their efforts.

Hopefully, parents and students concerned about the need for sidewalks near Cimino Elementary School will have the same success.

## Property Manager's Report



LAURA FRAZIER/Photo

Dyer Construction recently completed the renovation of the Garnet entrance.

Excerpts from the May 2002 Bloomingdale Special Taxing District property manager's report, submitted by Al Devney, president of DPMI, Inc., are as follows. Information: 684-6617.

Brandon Irrigation made repairs to the irrigation systems on Bell Grande, Garnet and Hickory Ridge. Thunder Irrigation modified zones on the Erindale and The Links systems. DPMI performed the monthly irrigation system inspection, and replaced 3 rotors, 34 spray heads and 15 risers, 3 broken zone lines and 12 light bulbs.

Neighborhood Pest Control sprayed Lesko fertilizer with orthene, dacomil and talstar on the grass and bushes.

Donahue, Inc. installed 1,600 coleus in 10 locations. Boss of Gloss watered the flowers.

Yardworks, Inc. planted dwarf confederate jasmine and St. Augustine grass on Springvale and five other areas where it had died out.

Camarra's Landscaping

installed some new bushes on Lithia Pinecrest Rd.

Dyer Construction completed the renovation of the Garnet entrance.

Planscape, Inc. replaced dead oak trees on Greenhollo and Natures Way.

Gemini Painting completed pressure washing, sealing and painting the walls on Culbreath, Natures Way, Glenhaven and Garnet. Boss of Gloss pressure washed the walls on Glenhaven.

In the land of eat, drink and pitch out the window, thank you to the resident who swept up the cases of broken beer bottles on Natures Way one Sunday morning. Your efforts are greatly appreciated. DPMI picked up 29 bags of litter, a dust pan, 5 hub caps, a golf ball, 100 English to Spanish vocabulary cards, a drain plug, a timing belt, a car telephone adapter, six pairs of socks, an air mattress, a 50-ft. garden hose, a metallic sign and 41 cents. The beverages of choice were Mountain Dew for soft drinks, Bud Light for beer and Georgi vodka for distilled spirits.

## Kitchen Solvers®

Complete Kitchen Remodeling Services!

Kitchen Remodeling Specialists Since 1982!

The Choice is Yours...

- \*Custom Cabinet Refacing
- \*Elegant Custom Cabinetry
- \*Solid Surface Countertops by Montelli & Corian
- \*Kitchen Design & Planning
- \*Kitchen Accessories

Ranked by Success Magazine as America's #1 Kitchen Renovation Company!

Locally Owned & Operated  
**Complimentary In-Home Estimates**  
**(813) 681-1416**  
**Call Today!**

Materials & Installations Completely Guaranteed  
 Licensed-Bonded-Insured

## Board Considers Name For New Library

It won't be long before construction starts on the new South Brandon library just east of Bloomingdale High School. The library board is currently reviewing a request made by the Bloomingdale Area Community Council to have the library named "The McLean Family Library" after the family who owned and farmed the future library site for over a hundred years. Library board information: 273-3660 or board@thpl.org.



MACK AUSTIN/Photo

## Candidate: School Budget Items Need Careful Evaluation

By LAURA FRAZIER

As an engineering specialist for insurance company SM Global, Cliff Roberts evaluates the structural integrity of commercial and industrial property. As a candidate for the Hillsborough County District IV school board seat, Roberts said closer evaluation of items brought before the school board for approval could save taxpayers time, money and headaches.

"Ninety-nine percent of items sent to the board now are rubber-stamped. No one seems to be asking questions about where the money goes."

A lifelong Brandon resident, Roberts said his engineering and evaluation experience would be an asset to the board. If elected, Roberts said he would implore the board to put down their stamps and make more informed decisions on school policy, construction and budget decisions.

"There needs to be more coordination between the school board, local govern-

ment and the public," Roberts said.

"Before we start building a school, before ground is broken, let's do a complete evaluation of the site. Let's interview surrounding neighbors, talk to county officials, evaluate the infrastructure."

Roberts said better communication in the early stages of planning could head off problems like one recently experienced at Durant High.

"Durant wound up paying over a million dollars to redesign and relocate a permanent structure the school board approved."

When problems arose due to the location of the structure, Roberts said the school had to redesign and move the entire agricultural dept. to another side of the school.

"Things like the situation at Durant, or the dilemma of the lack of sidewalks near the new Cimino Elementary School in Bloomingdale, they wouldn't happen if we all get on the same page before ground is broken," Roberts said.

Roberts said if elected he would visit every school in the county and every new school construction site.

"Then, as a board member, I'm walking out there, becoming familiarized with the real property."

Roberts said although the school board's policies and procedures leave much to be desired, major changes would not be easy, but he's up to the task.

"The school board has to approve everything from changing the brand of drinks sold in vending machines to multi-million dollar contracts for new instruction," he said.

"I can't guarantee that by pushing for more evaluations and careful decision making that I'll pick up more, but I want to try."

Roberts lives with his wife and two sons, Bevis Elementary School students, in Fish Hawk Ranch. He is an active Bevis Elementary PTA member and currently serves as the school's PTA county council chair. He is a member of the Fish Hawk Ranch home-



LAURA FRAZIER/Photo

Cliff Roberts

owners association, a little league coach and attends Bloomingdale Oaks Church.

Plant City resident Joe Newsome, who retires this year after 24 years on the school board, is vacating the District IV seat. Roberts opponents are former school area director Larry Martin of Plant City, school district supervisor of professional standards John Werner of Brandon, and Buckhorn Elementary parent volunteer Jennifer Faliero.

The school board primary election will be held on Sept. 10 and the general election takes place on Tuesday, Nov. 5, 2002.

## Bloomingdale Substation Notes

by DEPUTY PETE MAURER and CSO SANDY CAPITANO

The Bloomingdale Community Substation is at the corner of Bell Shoals Rd. and Glenhaven Dr. in the Village Center Plaza. Station hours are 9 a.m. - 5 p.m. weekdays. Phone: 635-8040.

### Crime Prevention Team

It's sad to say that crimes occur in a community as nice as Bloomingdale, but it is a fact. There are those who break the law, steal from others and have no regard for the property of others. Many of them now call our local jails home. We as law enforcement officers are working every day to prevent crimes. It is our chosen profession.

We need each and every resident in our community to join our crime prevention team. When neighbors look after each other, when homeowners think about security and take the proper precau-

tions, and when individuals are careful with their possessions and autos, the crime rate goes down. This was exemplified recently when a Bloomingdale resident stopped a major mail theft from taking place.

Each of you, as residents, homeowners and car owners should make the following crime prevention tips part of your daily routines and become a part of our crime prevention team.

### Protect Your Home

Close and lock all exterior doors - whether you are home or not.

Locate computers, stereos and other "high dollar" items out of direct sight through windows.

When you buy high-ticket items, don't put the box out by the curb - shred it or store it for future use.

Don't give out personal information to telemarketers.

Invest in a good set of deadbolt locks and have them installed professionally.

Hide cash, jewelry and guns in a location other than the bedroom where thieves will look first.

### Protect Your Car

Do routine maintenance to avoid breakdowns.

Always lock your car when you are in it.

Lock your car when you leave it and take your keys with you

Keep your interior uncluttered.

Keep an emergency tool kit and emergency road kit in the trunk.

Do not leave packages, CD cases, laptops, cell-phones, purses or briefcases on the seats.

Do not leave your radar detector mounted on your window. Take it down and store it.

### Protect Yourself

Display confidence. Don't walk in a daze. Look around.

Don't carry large amounts of cash.

Carry your purse or briefcase close to you.

Don't put your wallet in your back pocket.

Have your keys in your hand when walking to your car. Look around.

Look into your car before getting in.

Don't put receipts with purchased items. Some may have credit card numbers on them.

### Vacation Home Safety

Vacationing homeowners can request a Home Security Check at the Bloomingdale Community Station. It does not guarantee the safety of your property, but does provide additional surveillance while you are away on vacation.

## Springvale Condos Adding Units

By LAURA FRAZIER

The Bloomingdale Homeowners Association received several phone calls and e-mails last month when residents saw land around the Springvale/Murray Dale Dr. conservation area being cleared for construction.

According to county commissioner Ronda Storms' office, the land clearing and construction is part of a Pine Grove condominium expansion project. The condo owners have plan approval and permits for the construction of 28 new units on 2.73 acres.

The work is unrelated to 11+ acres of wetlands, which lie adjacent to the condo construction.

Residents objected last year when the owner of the 11+ acres filed a rezoning request for the property. The property is identified on county plats as "public and conservation land." The present owner purchased the property during tax default

proceedings in March of 2000, and later applied for rezoning to allow the construction of 4 homes per acre.

Representatives of the owner attended a BHA meeting last year to discuss the owner's intent to build one 5,000 sq.ft. single-family home on two acres of the property. The representative told the association board the owner had no intention of building more than one home on the property, since only two acres of the land were "buildable."

EPC officials confirmed a major portion of the property consists of environmentally protected wetlands that cannot be altered or destroyed. EPC also concurred that less than two total acres of land are suitable for construction, regardless of the county zoning designation.

The rezoning request, PRS 00-1248, was withdrawn at the Feb. 28, 2001 Board of County Commissioners Meeting.

Make Eye Contact at  
**RIVERVIEW OPTICAL**

7037 U.S. Hwy 301 S. • Riverview, FL 33569  
**(813) 677-0229**

- Color Contacts available
- Personalized service & honest value
- Most insurance accepted
- Repairs
- FREE adjustments & cleaning

<p><b>CONTACTS</b></p> <p>2 Six Packs Color Contacts Eye Exam Fit &amp; Follow Up Cleaning Kit <b>\$139</b></p> <p><small>With coupon. Some restrictions apply. Not to be combined with any other offer. Expires 8/31/02.</small></p>	<p><b>CONTACTS</b></p> <p>2 Pair Daily Wear or 2 Six Packs Disposable Includes Eye Exam <b>\$99</b></p> <p><small>Standard Contacts. With coupon. Some restrictions apply. Most prescriptions. Not to be combined with any other offer. Expires 8/31/02.</small></p>
<p><b>EYE EXAM COMPREHENSIVE</b></p> <p>Includes Dilation, Glaucoma &amp; Cataract Evaluation <b>\$19<sup>95</sup></b> <small>Reg. \$39.95</small></p> <p><small>*Instant rebate with frame and lens purchase. Contact exam available. With coupon. Not to be combined with any other offer. Expires 8/31/02.</small></p>	<p><b>GLASSES</b></p> <p>Buy 1 Get 1 <b>FREE</b></p> <p><small>With coupon only. Most prescriptions. Select frames single vision. Not to be combined with any other offer. Eye exam extra. Expires 8/31/02.</small></p>

263456



### Bloomingtondale Yard of the Month

The Kingsley residence  
4022 Fortuna Place, Oakcrest, Bloomingtondale East

### Bloomingtondale Yard Of The Month

Nominate your friends and neighbors (or yourself) for the Bloomingtondale Yard of the Month award.

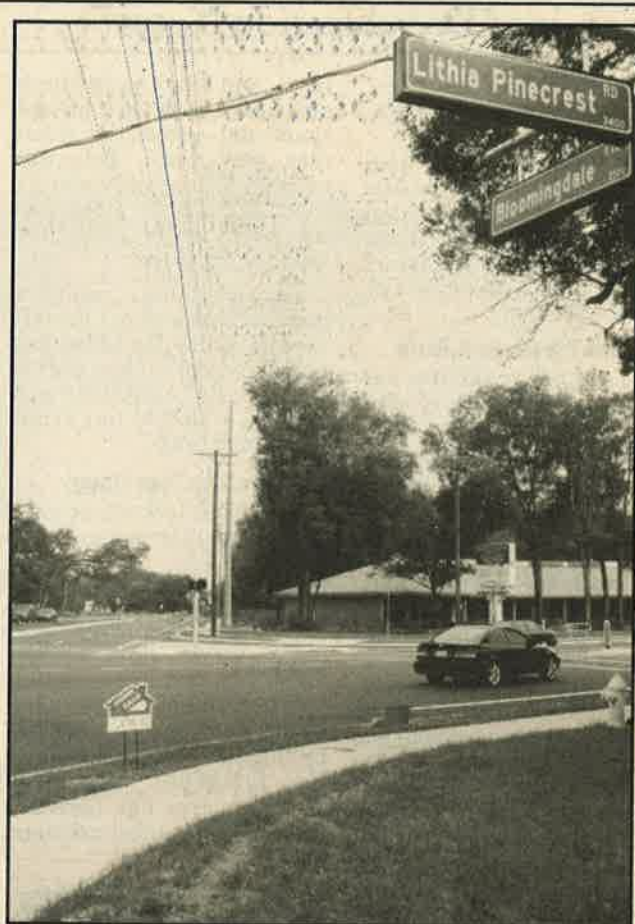
Winners will receive an Ace Hardware of Bloomingtondale gift certificate courtesy of the Bloomingtondale Homeowners Association.

Submit entries by mail to Yard, 3509 Bell Shoals Rd., Valrico, FL 33594, by fax to (813) 651-1129 or by E-mail to [Letters@BloomingtondaleGazette.com](mailto:Letters@BloomingtondaleGazette.com).

Your name and phone # ...

Nominee's name, address, phone # ...

Outstanding yard features ...



MACK AUSTIN/Photo

### Publix Gets Green Light

After 15 long months of public hearings and heated dialogue between developers, county officials and residents, a rezoning request for property southeast of the Bloomingtondale Ave. - Lithia-Pinecrest Rd. intersection was approved last month. The developer plans a 71,890 square-foot Publix grocery store and shopping center, with 7850 square-foot of commercial space. The center will cover a 13.4-acre triangular section. Many residents and commissioners did not support the request.

### View School Stats Online

A Gazette Report

The Florida Dept. of Education publishes School Advisory Council reports on the Internet.

The database allows viewers to search scores, statistics and data for every public elementary, middle and high school in the state.

Information published

includes FCAT results, graduation rates, student and administrator absences, school safety environment info (reported incidences of drug, alcohol and tobacco use, vandalism, fighting, weapons possession, etc.), student demographics and more. Visit <http://www.firn.edu/do> and select "School Advisory Council reports" from the main menu.

## Parents Must Bridge The High School Experience Gap

By SHARRON K. COSBY  
Co-Founder, Wake-Up Call, Inc.  
Coordinator, CommUNITY Works

Did you attend high school in the 1970's? What did your high school look like? What did it take to get in trouble at school back then? Was there a noticeable difference between what the "good" and "bad" kids looked like? If the answers to those simple questions bring unpleasant memories, stop and consider what our teens face today on a daily basis.

It's safe to say that in the 70's, the most common forms of trouble in school were talking in the halls during class changes, having your shirt-tail out, having your hair too long (for guys, not touching their collar), chewing gum and disrespect to a teacher. Fast forward to the year

2002. What do our children confront today?

The offenses occurring in our middle and high schools today are felonies - rape, assault, drug use and selling, homicide, and bomb threats. These are all a very real part of our students' day. So our encouragement to "just go to school and do your work" may oftentimes be lame. Many times, Dan and I scolded our children by asking, "why can't you just go to school and do your work and stay out of trouble?" We were approaching their school day from our 1970's filter, but the two are not alike in most instances.

As parents, we need to really listen between the lines to what our children are saying about their daily school experiences. Our students need parents who understand that the school

environment has changed, and that they have anxieties and concerns that we never had.

Even though the environment has changed, they still need to go to school and receive an education. Our students are looking for guidance to cope with the dramatic changes in their landscape. Unfortunately, many turn to drugs and alcohol as coping mechanisms because it's an easy escape. Talking about feelings isn't always so easy.

What can you do? Talk to them about the differences in your high school and theirs. Acknowledge their feelings of apprehension as they go to school. Talking about the fears may not make them go away, but it can go a long way to building an understanding relationship between parents and child. Knowing that



Photo courtesy Randy Horton, Artisan Photographs  
Sharron and Dan Cosby

someone cares enough to listen to our fears and misgivings without judging is a very strong bridge builder.

Dan Cosby, CAAP-1, a substance abuse counselor at Overcomers Counseling Center, and his wife, Sharron, CAP Intern, are founders of Wake Up Call, Inc., and can help you learn more about teen and family substance abuse problems.

Call 626-5394 for information.

# CLASSIFIED

The Bloomingtondale Gazette classified office is located in the Brandon News building at 1401 Oakfield Dr., Brandon FL 33511

TO PLACE AN AD	RATES	GENERAL POLICIES:	AD DEADLINE
call: Ashley Hager or Ruby Brooker at: 689-7764 or fax to: 689-9545	<b>SUPERSAVERS:</b> Private parties may run a three line ad free of charge for merchandise under \$250 (price must appear in ad). Not available to businesses. Other restrictions apply. Free ads must be submitted in writing, by fax or in person. Five ads per person per month on a space available basis. <b>RATES:</b> Five lines for \$7, additional lines are \$140 per line. Ask about our discounted rate available if you advertise in the Brandon News, Plant City Courier and Shopper or other Sunbelt publications. <b>HOURS:</b> Mon. - Fri. 8 A.M. to 5 P.M.	<b>CANCELLATIONS:</b> Cancellation numbers are issued at the time of cancellation. It is necessary you have it in the event of any misunderstanding or adjustments. Ad deadlines are applicable to cancellations as well. <b>ADJUSTMENTS:</b> Please check your ad for errors the first day it appears. Sunbelt Newspapers will not be responsible for errors, except to the extent of the cost of the first insertion, and then only for that portion of the ad that may have omissions of copy. Corrections of errors must be made within the above ad deadlines also. <b>CREDIT:</b> Some classified categories require payment in advance.	to place cancel or change an ad is <b>Friday, 5 P.M.</b> 1 week prior to publication.

#### 65 Money to Lend

NEW Programs, 80 grants avail. \$5,000 for 1st time & previous home buyers, for down payment and closing costs. Six months good credit required. 813-494-4867

#### 104 East Hillsborough

BLOOMINGDALE 3/2/2 A+ schools, like new condition, \$116,000. By owner 655-1296.

#### 215 Mobile Homes

RIVERVIEW Mobile Home Lot Water+ garbage included \$225/mo. 813-626-7876

#### 320 Medical

MEDICAL ASST. FT Pediatric Exp only. Bilingual a plus. Fax Resume 813-655-4302

#### 402 Antiques/Collectibles

House of Two Sisters Antiques, Primitives and Tea Room Consignments Accepted 813-258-8220 204 S. Howard Ave, Tpa

#### Want Ads

Patio set, Antique, cast iron, 4 chairs & table. Needs paint \$350 firm 813-681-9128

#### CLASSIFIED WORKS

#### 410 Furniture

Bed- \$100. Brand new queen set, in plastic w/warranty. 863-412-2340.

Bed- \$100. Brand new, full mattress set w/warranty. 863-698-2311.

#### 410 Furniture

Bed- \$175. Brand new, king pillow top set, in plastic w/warranty. 863-667-3587.

#### 451 Exercise Equipment

Treadmill Pro Form 835 QT, 1 yr old, excellent condition, paid \$1300, sell \$600 obo. 813-643-1880

#### 649 Automobiles For Sale

BMW 1995 325i Sedan, Sport pkg, sunroof, 5 spd, tint, white/tan. Excellent. 62K! \$16,000. 813-643-8535

PONTIAC 1994 Grand AM GT, red, V6, auto, new motor, Excellent Condition. \$4,500. 813-685-5966

Spot Advertising Works



You have many ways to place your classified ad in the Bloomingtondale Gazette:

- **by phone:** call Ruby or Ashley at: 689-7764
- **by fax:** 689-9545, attention: Bloomingtondale Gazette
- **in person:** The Brandon News, 1401 Oakfield Dr.
- **by mail:** The Bloomingtondale Gazette, c/o the Brandon News, 1401 Oakfield Dr. Brandon, FL 33511

**NEW ITEMS ARRIVING WEEKLY!**

Caswell-Massey • Trapp Candles • Accent Tables  
Beaded Table Toppers • Fountains  
Table Top Decor • Candlesticks  
Unique Baby Towels & Gifts

**ORIGINAL ART BY MELETHA EVERETT**

**Royal Oaks Shopping Center**  
3240 Lithia Pinecrest Suite 101 • Valrico  
(Corner of Lithia Pinecrest & Bloomingtondale)  
Open Monday through Saturday 10am - 6pm

**813-643-9390**

# Bloomingtondale Gets Five-Star Service



with

*Luana*  
**RUSSELL**

Five-Star Service

### Homes Recently Listed In Bloomingtondale

2534 Claeside Drive .....	\$134,900
2304 Oakhurst Court .....	\$129,900
3906 Buttonwood Court .....	\$199,500
2524 Wrencrest .....	\$129,900
2203 Morganside Way .....	\$174,900
3807 Polumbo Drive .....	\$194,500

### Homes Recently Sold In Bloomingtondale

750 Isleton Drive .....	\$122,500
2323 Eagle Bluff .....	\$212,000
4408 Riverclose .....	\$195,000
2620 Shilo Ct .....	\$116,500
1416 Clarion Drive .....	\$193,000
2619 Wrencrest .....	\$117,500



**KELLER WILLIAMS**

REALTY

OF BRANDON

510 Vonderburg Dr, Suite 200 Brandon, FL 33511

**684-9500 or 685-8545**

Call Luana and discover the pleasure of five star service