

# Coming Attractions

## Anniversary Issue

In January, 1980, the first issue of *The Bloomingdale Gazette* hit the streets. Next January, we will commemorate 15 years of Bloomingdale Growth and History with a special Anniversary Issue of *The Gazette*. We are asking

residents who have early photographs of the community to please lend them to us for this very special issue. We are also looking for early "settlers". If you are an original resident of Bloomingdale, please call the Community Office, 681-2051.

## Mr. and Mrs. Claus

Back for a special engagement, direct from the North

Pole to Bloomingdale, our community welcomes Mr. and Mrs. Claus in December. Look for details next month.

## In December Look For

- ....Holiday Shopping Guide
- ....Children's Letters to Santa
- ....Tales of Christmas Past

# The Bloomingdale Gazette

Volume XIV, Number 11

Published by the Bloomingdale Homeowners Association, Inc.

November 1994

## BHA Blurbs

### The Board Wants YOU

The board of the Bloomingdale Homeowners' Association is looking for a few good men and women to serve their community during the next two years. Nominations will be taken this month and voted on at December's annual general membership meeting. Six of the 12 board positions are open for a two-year term.

Board members are required to attend one evening meeting a month during which they make decisions to improve the quality of life for all Bloomingdale residents. While the board is not a governmental body, it does often act as a lobbying group representing the interests of the residents in county matters.

Residents who wish to serve on the board are asked to submit their name to the attention of board secretary, Rick Oros, at 3232 Lithia Pinecrest Road, Suite 101, Valrico 33594. Please include a telephone number and address, the length of residency in Bloomingdale (newcomers are welcomed), and any special interests.

### Two Picnics Planned - One Work, One Play

A committee of the BHA has been formed to plan two community picnics early in 1995. The first will be a workday to improve the appearance of Park East, and the second will be a community wide picnic at Park West.

The committee, which is headed by Ted Grable and Rick Oros, has planned a workday in January, and with the help of the county, hopes to "clean-up" Park East. Community volunteers are needed and workers will be treated to a picnic lunch. Look for more details in December.

The second renewed Community Picnic is planned for April, and will include more food, activities, and entertainment than last June's very successful picnic.

### Crime Rate Down

Mobile Watch coordinator LaWayne Wyatt proudly reported at last month's BHA meeting that there has been a significant decrease in the number of crime reports. One possibility he said is that crime travels in waves across the county, and this could just mean that the band of criminals on the loose are concentrating their efforts in another part of the county and may someday work their way back to Bloomingdale. But let's think positively. The other possibility is increased patrols by Hillsborough County and improved individual awareness toward crime prevention.

Remember to keep those garage doors down, cars locked, and outside lights on.

### Attention Members

The BHA continues to receive 1994 membership dues daily, and while these are still being accepted, plans are underway for the 1995 membership drive. This year's membership packet included a brochure with information on deed restrictions and county codes. The BHA is currently taking a look at including another informative brochure. Remember that dues are for the calendar year, not for the 12 month period following payment.

### Getting Your Money's Worth

This is what the BHA can do for you! Community symposiums on deed restrictions and zoning violations...road/street light/traffic control advocacy...mobile watch support... parks and recreation advisory committee...local government liaison/information...public safety liaison/information...community relations...neighborhood improvement program sponsors...community picnic organizers.

That's a lot of bang for your bucks!

### County Rec Visits

Officials of the county Parks and Recreation Department were guests at last month's BHA meeting (see related story). They were on hand to go over final plans for the new Recreation Center set for Park West. In attendance were project planner Joel Jackson, rec services manager Lois Kessler, and county employees who will staff the local center, including Bloomingdale resident Donna Clouse, named center director.

This was the third meeting attended by Jackson and Kessler, and the BHA appreciates the county's outstanding efforts in keeping the community updated on the rec center plans.



PETER ALUOTTO

## Aluotto New STD President

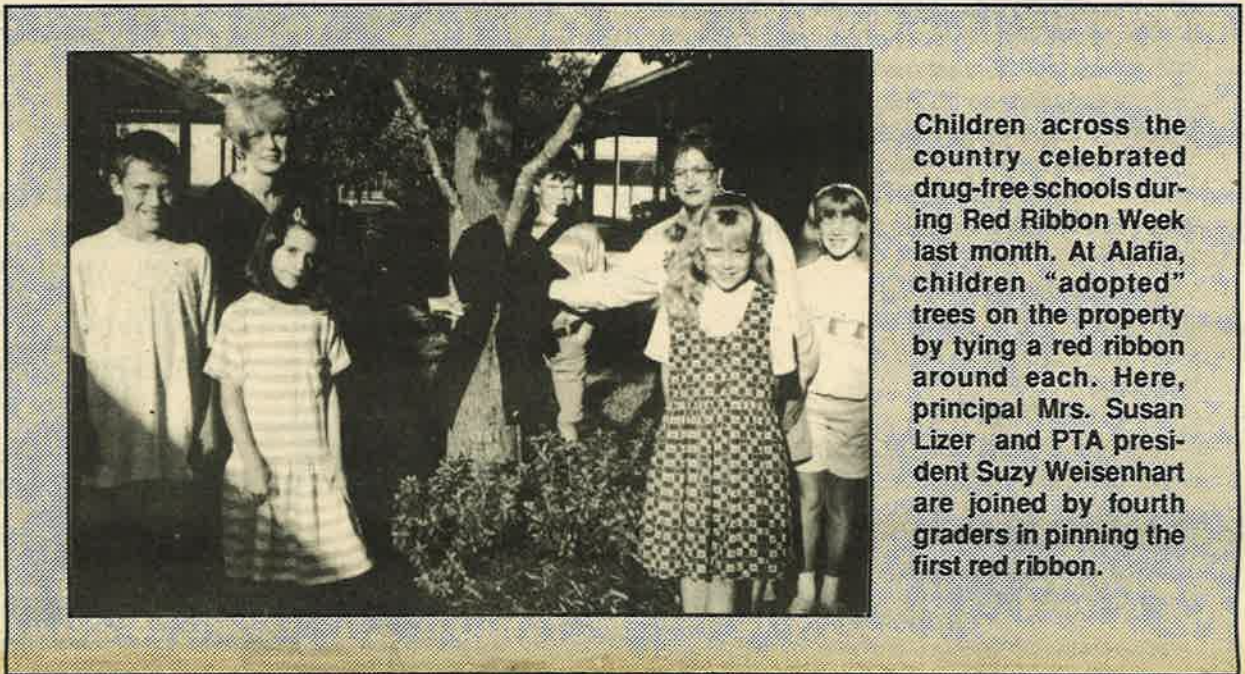
Bloomingdale West resident Peter Aluotto was elected the 1995 president of the Special Taxing District board of trustees at last month's meeting.

He will head the seven-member board whose other officers are Chris Herring, vice president; Sue Hadden, treasurer; Fred Uphoff, recording secretary; and Michaela

Sykes, corresponding secretary.

Aluotto is a newly-elected trustee but one who has served on the board in prior years.

First on the agenda for the new board will be approval of a lawn maintenance contract for Bloomingdale's common ground.



Children across the country celebrated drug-free schools during Red Ribbon Week last month. At Alafia, children "adopted" trees on the property by tying a red ribbon around each. Here, principal Mrs. Susan Lizer and PTA president Suzy Weisenhart are joined by fourth graders in pinning the first red ribbon.

## Rec Center Plans Ready For Approval

by Rozel Sciulli

Park West will be taking on a new look...someday. Not as quickly as originally planned, but certainly before summer. That's the word from County Parks and Recreation officials who showed off final plans for the Bloomingdale Recreation Center at last month's BHA meeting.

According to project coordinator, Joel Jackson, groundbreaking for the new center could come as early as February, but realistically, it could be closer to May.

Already over budget at an estimated \$363,000, the center, had to have all the kinks worked out so it can serve as a model for other county recreational facilities in the future.

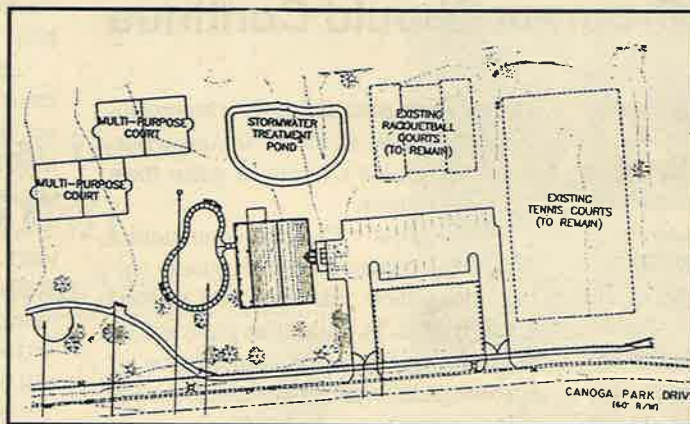
"We are looking for ways to cut costs without sacrificing quality," said Jackson.

The nearly 5,000 square foot facility will feature an

1,145 sq ft. multi-purpose room in the heart of the building, ideal for group gatherings and community meetings. In addition, there will be a game room, kitchen, and arts and crafts room. Unique to this center will be a covered porch that runs the length of the back of the building. It will provide shelter from the rain for children, who otherwise would have to run into the center.

Outside recreational space will include the handball/racquetball courts, two

See REC., pg. 8



An aerial view shows the layout of the county recreation facility planned for Park West. What looks like a swimming pool to the left of the building is a sand playground area.

## Light Years Away At Rosemead

by Chris-Ann Phillips

Traffic congestion at Rosemead and Bell Shoals has placed that intersection on a county priority list, but so far down that residents won't get relief for at least eight to 10 years.

The only way Rosemead will move up the priority list, according to county official, is if there is an increase in traffic accidents at that location or by a grassroots campaign that results in political pressure on the county.

The need for signalization at Rosemead was cited in a 1993 study, according to traffic engineering spokesman Paul Libertini. However, the Rosemead project is 37th on a list of 46 intersections across the county. With an average of four signals installed each year, residents can expect to wait at least eight to 10 years before Rosemead receives the county's attention.

A county employee who asked not to be identified, referred to the proverbial squeaky wheel saying the only way to speed up the installation of a light is to apply pressure on the county.

BHA board members, who are expected to address the topic at their next meeting, are putting out a call for interested residents to spearhead the campaign.

Libertini said the needs list is re-prioritized annually based on the number of accidents at the various locations. Since 1991, there have been a total of nine vehicular accidents at Rosemead, but only an average of one per year that was classified as preventable. The fact that residents are inconvenienced by the delay in exiting onto Bell Shoals from Rosemead is not enough to warrant installation of a signal, he said.

See LIGHT, pg. 9



# BLOOMINGDALE COMMUNITY PAGE

## The Bloomingdale Gazette

Dear Readers,

I want to take this opportunity to welcome the additional communities that will be enjoying *The Bloomingdale Gazette*. You are included in a community which is dedicated to satisfying community news coverage, along with knowledge to help solve community problems. We at the newspaper encourage you to write or call us with ideas or comments you have.

For those of you who do not know, *The Bloomingdale Gazette* will be going into its 15th year of publication this January. Any resident who has information or pictures of the area over the past 15 years is encouraged to contact the newspaper.

Thanks to the BHA the recreational center at Park West is a reality. It took commitment, hard work, and persistence to make this happen. The BHA is planning two special park events in 1995. Watch for the details in the up coming issues of *The Gazette*.

One additional comment, if a reader or an advertiser has a specific comment or complaint pertaining to the newspaper, please contact me personally at the community office. It appears certain particular situations have not been handled in an appropriate manner. All of your comments, suggestions and ideas are important to the community and this newspaper. If for some reason we are not meeting your expectations, it is important for you to inform me of your concerns.

Sincerely,



Rick Oros

## Welcome Neighbors

*The Bloomingdale Gazette* is pleased to announce an expansion of distribution into three more communities - Indian Hills, Lithia Ridge, and Little Oak Estates. We, along with our advertisers, would like to welcome the nearly 300 homeowners in these areas to our growing family of readers. We invite you to submit your news and information and share with us your comments.

### Our Times

## Beautification Program Should Continue

by Rozel Sciuili

Bloomingdale boasts the highest per capita income in Hillsborough County, and as a result, its residents enjoy living in an upscale community that is maintained on a high level of aesthetic appeal.

In the past year, Bloomingdale has donned a new appearance thanks to the efforts of last year's STD board. The interior roadways and neighborhood entrances have been tastefully accessorized.

Seven residents have taken on the awesome task of deciding what to do with nearly \$300,000 in taxes. And while some of those funds are already dedicated to monthly maintenance and utilities, there is money available for special projects.

Hope here is that among the projects the new board takes under consideration in 1995 will be continued efforts in the direction of community beautification.

New STD trustees, please consider these suggestions.

**Uniform entrances** - Each main entrance off Bell Shoals, Bloomingdale, Lithia Pinecrest, and John Moore would have identical "Bloomingdale" signs or walls. And not wooden signs, either. The folks in Bloomingdale Ridge had the right idea with their grand signage at Culbreath and Nature's Way. Or drive by and check out the entrances to Providence Lakes, welcoming residents with an exquisitely tiled mosaic of a Florida landscape. The people up in Carrollwood have simple, but

elegant signs announcing their communities, and they are all identical. And, while, you're at it, don't forget to make them lighted entrances.

**New grass** - The best communities around the county have lush, grassy carpets along their sidewalks and in their center islands. St. Augustine grass will do a lot to improve the appearance of Bloomingdale's sparse and recently muddy common areas.

**Lamp posts** - As provincial as that may sound, it adds a kind of warmth to a community. Entrances to each of the neighborhoods could be lighted and accented by black wrought iron lamp posts. They would match the benches and the lighting may deter vandalism to neighborhood signs.

From the addition of over 200 palms to the park benches in their plant bed settings, Bloomingdale is beginning to resemble some of its sister communities in the northwest part of the county. And well it should. Bloomingdale is a premier community.

That's why the BHA is working so methodically toward greater enforcement of deed restrictions.

And that's why the new STD trustees should continue the beautification campaign of the previous board. What has been accomplished in the past year should only be the beginning, not a one-time splurge.

### OFFICERS

**BLOOMINGDALE HOMEOWNERS ASSOCIATION, INC.**  
3232 Lithia Pinecrest Road  
Suite 101  
Valrico, Florida 33594  
681-2051

|             |                |          |
|-------------|----------------|----------|
| Randy Wolfe | President      | 229-3321 |
| Ted Grable  | Vice President | 685-7193 |
| Rick Oros   | Secretary      | 685-0866 |
| Jim Wiley   | Treasurer      | 684-7825 |

#### Directors

|               |          |                |          |
|---------------|----------|----------------|----------|
| Jeff Campbell | 689-9650 | Russ Lembke    | 689-2829 |
| Steve Miller  | 684-3223 | LaWayne Wyatt  | 685-2072 |
|               |          | Patricia Radel | 651-0210 |

### Bloomingdale Special Taxing District

|                |                         |          |
|----------------|-------------------------|----------|
| Peter Aluotto  | President               | 685-0727 |
| Chris Hering   | Vice President          | 654-0235 |
| Sue Hadden     | Treasurer               | 685-6160 |
| Michaela Sykes | Corresponding Secretary | 653-0066 |
| Fred Upoff     | Recording Secretary     | 685-3013 |
| Joe Liguori    | Trustee                 | 681-9655 |
| Sue Boucher    | Trustee                 | 653-2018 |
| Greg Atkinson  | Administrator           | 759-6670 |

### Bloomingdale Mobile Watch

|                 |                       |          |
|-----------------|-----------------------|----------|
| LaWayne Wyatt   | Core Committee        | 685-2072 |
| John Britton    | Coordinator/Scheduler | 681-1553 |
| Steve Schneider | Treasurer             | 685-8378 |
|                 | Equipment Manager     |          |

#### Members

|              |          |
|--------------|----------|
| David Guy    | 681-5943 |
| Paul Kelmer  | 681-9701 |
| Rick Borling | 684-2022 |

### Bloomingdale Oaks Special Taxing District

P.O. Box 3132  
Brandon, Florida 33509-3132

|               |           |          |
|---------------|-----------|----------|
| William Grace | President | 685-2817 |
|---------------|-----------|----------|

### The Bloomingdale Gazette

3232 Lithia Pinecrest Road • Suite 101  
Valrico, Florida 33594  
681-2051

Monday - Friday 9:30 a.m. - 12:30 p.m.

#### Directors

|             |             |
|-------------|-------------|
| Rick Oros   | Pam Liguori |
| Randy Wolfe | Joe Liguori |

#### Bloomingdale Homeowners Association, Inc.

|                        |                              |
|------------------------|------------------------------|
| Rick Oros              | Publisher                    |
| Rozel Sciuili          | President                    |
| Brian Bergren          | Editor                       |
| Vanessa Clark          | Writer                       |
| Mandi Oros             | Writer                       |
| June Oros              | Office Manager/Layout Editor |
|                        | Graphics                     |
| JoAnne Scoff           | Ad Representative            |
| Shirley Farrer         | Distribution Manager         |
| Circulation Assistants | Rent A Kid delivery system   |

Accounting services provided by: Robert Morris, 611 East Bloomingdale Avenue, Brandon, Florida 33511

#### Statement of Operation

The Bloomingdale Gazette is also available free of charge at area newsstands: Publix, The Greater Brandon Chamber of Commerce, NationsBank, Mail Boxes Etc., Bell Shoals Cigo, Rainbow Mart, Kash & Karry, Nations Bank, Brandon Library, Sun Bank, Barnett Bank, and Farm Stores.

The content of *The Bloomingdale Gazette* is the property of The Bloomingdale Gazette, Inc. and is not reproducible in any manner without express written permission from the president of *The Bloomingdale Gazette, Inc.*

### MEETINGS

All meetings take place at the Bloomingdale Community Office. These are monthly public meetings and all Bloomingdale residents are invited.

**Bloomingdale Special Taxing District**  
Second Monday of the month at 7:30 p.m.

#### BHA Board of Directors

Second Tuesday of the month at 7:30 p.m.

**Bloomingdale Oaks Special Taxing District**

First Thursday of the month at 7:00 p.m.

**Mobile Watch & Neighborhood Watch**

Watch this listing for dates & times. The meetings are held on a per need basis.

## Neighborhood Improvement Report

by Patricia Radel

Since our last report, the response from the community for volunteers for the Neighborhood Improvement Program has given us enough people to watch over our neighborhoods and to help us correct county code violations, thereby making our community a more desirable place to live and play.

Bloomingdale East now has six volunteers; two who have not had their training yet, but will in the very near future. There have been 12 violations cited in East since our last report; most have been corrected.

Bloomingdale West has three volunteers, and since our last report, there have been 15 violations cited. Most also have been corrected. Those violations which have not been corrected during the specified time, will be turned over to the county.

We are very pleased with the cooperation from most of the homeowners. Many of the corrected problems make a very big improvement in our community. This in

return helps keep our property values stable, making Bloomingdale a place people want to live.

We have also received many calls at the Community Office, which are being turned over to our volunteers, who in turn check out the complaint to make sure they are indeed county code violations. Cards are then sent to the homeowners who are found in violation.

Our biggest problem has been vacant homes that are for sale or in foreclosure. The lawns get very unsightly before they are cut by the responsible party. We try to contact the real estate agent who has the property listed to make sure the lawn gets cut in a timely manner.

We hope the Bloomingdale community can see a difference since our program has been in effect. We are very pleased with the way the community has been working with us. Together we can keep Bloomingdale the great place it is.

## STD Says Pool Water Killing Grass

Some pool service companies and residents are unintentionally killing the grass on the community's common grounds as a result of where they drain the swimming pools.

According to property manager Greg Atkinson, pool hoses are being placed through the seap holes in the block walls that surround the neighborhoods. The result of drainage is that the chemically treated water is being soaked into and is killing the grass on the other side of the wall.

Atkinson asks that residents

extend the drain hose all the way out to the street so the run-off will not affect the grass. Residents are also asked to pass this message onto their pool servicemen.

Signs of this can be seen around the community where the chlorine has left streaks of dead grass leading from the seap hole to the street. Atkinson said that St. Augustine grass is most affected.

"First the chlorine will leave stains in the grass and then eventually kill it," he said.



# Donna Mac

*Whether Buying or Selling, Know the Difference*



## Donna MacGiffert

- Bloomingdale's Area Specialist since 1983
- Sold millions and millions
- Let my experience, knowledge, service and commitment work for you
- Degree in Advertising and Marketing

# 654-7070

**SOLD!** Donna Mac does it again & again & again . . .

220  
~~213~~ SOLD

Homes in Bloomingdale



**New on the market!**

**1521 Holleman/Fairway Manor**  
Distinctive! Impressive former model.  
Call Donna Mac at 654-7070 for more information.

Another Home  
**SOLD**  
by Donna Mac.



Please welcome your new neighbors at:  
**2330 Eagle Bluff/The Greens**



**New on the market!**

**3812 Windtree Court/Bl'dale West**  
Nestled among the trees! Cul-de-sac!  
Call Donna Mac for details at 654-7070.



**In Bloomingdale Square**  
• CONVENIENT AND CLOSE TO YOU!





## Couple Gives New Meaning To 'Farm Aid'

by Brian Bergren

Peter Alfonso is a modest man. He won't mention that he rescued a small village in Guatemala from poverty and squalor, nor will he boast that he played a vital role in the war against drugs in Bolivia. What he will say is that he is glad to be back home after an eight-year absence.

Alfonso grew up in West Tampa, and in 1973 married his wife Marcia, a 30-year Brandon resident. As manager of the largest farming operation in the state of Florida, Alfonso traveled to Central America for years and made many friends and contacts in the region. These contacts requested him for a government contract because of knowledge of the Spanish language and his agricultural experience.

The Alfonsos accepted the job offer and traveled to Guatemala City with their four children to begin a marketing project for fruits and vegetables. Upon arrival in this third world country, Alfonso realized the Guatemalan climate was ideal for the cultivation of strawberries. While working for the United States Agency for International Development (US AID), he stumbled across a small village co-op attempting to grow strawberries using eight-year old plants. Alfonso decided



River travel was a common mode of transportation for Peter Alfonso while visiting plainain famers in Bolivia.

this village, Rincon Grande, needed his and the government's help. He spent the first year attempting to build the fragile existence with the villagers into a solid relationship.

While there, he designed a project to grow strawberries using modern methods similar to those used in the Plant City strawberry operation. Each individual farm, or cuerda, was consolidated and the operation began. One million plants were brought from California and the most modern irrigation system was installed. Rincon Grande was now a 50-acre strawberry operation. The project was endorsed by the Guatemalan President, and quickly

became the top development project in the USAID world. And because of its success, the project received a letter of commendation from then President Bush.

Rincon Grande was the poorest co-op in the country when Alfonso arrived. Exportation of strawberries from Guatemala was non-existent. The day Alfonso left, the co-op had become the wealthiest in the country. Guatemala was now exporting 8,000 tons of fresh berries per year and 10,000 tons were used for processing and local consumption by the completion of the project. Not only did Alfonso increase the wealth of the farmers, but also increased

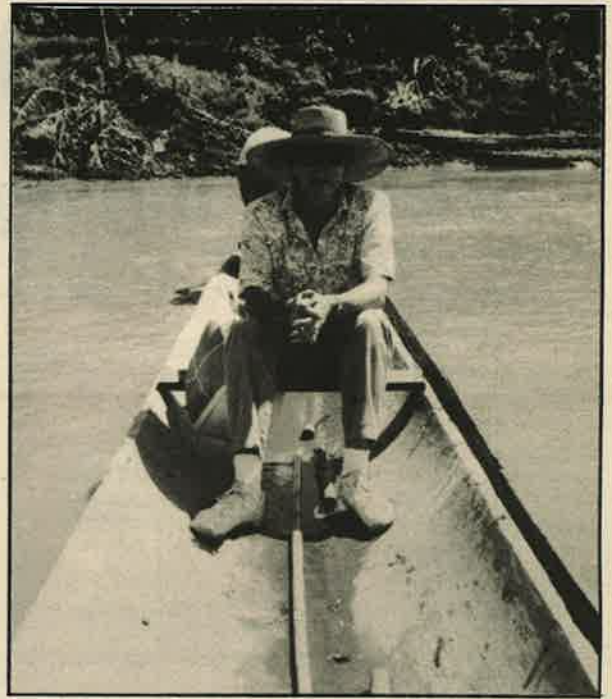
their standard of living. The USAID project made it mandatory for children to attend school before working in the fields, and every house was provided with a reliable sewer system to replace their outhouses. Rincon Grande had become a "modern company."

Returning to the states in 1990, Alfonso spent two years as a consultant for short term agricultural projects in South and Central America. He and his wife quickly packed their bags again and were off to the jungles of Bolivia where Alfonso had been assigned to the USAID coca eradication program.

Alfonso's project was not an easy endeavor. He was to train the poor farmers of the region to sustain alternative crops other than coca, from which cocaine originates. Bananas was a suggested alternative crop, but the farmers were making only 45 cents for 720 bananas. Coca was much more profitable and therefore more attractive to the farmers.

"Coca producers should never be considered bad people," said Alfonso. "The farmers were attempting to make a living and coca was the only profitable crop for them to grow."

The project soon produced a quality banana from which farmers could make a large profit. Newly converted banana producers were now receiving \$18 for those same 720 bananas. Alfonso created banana markets within South America and re-initiated trade with Argentina which had been halted due to an outbreak of cholera. By the end of the project, an estimated 30,000 people had benefited from Alfonso's expertise, and the production of



Marcia Alfonso travels a river in Bolivia to visit a mission school for tribal children.

coca had decreased.

"Every time I leave a country, it is like leaving a part of my family behind," said Alfonso, who also ministered his Christian beliefs to the villagers. "What has impressed me the most during my work in the development field is not so much the famous people I have met, but the people I have worked with, the poor farmers. Without the guidance of the Holy Spirit, none of this could have been accomplished."

Alfonso is proud of his accomplishments in Central and South America, and is now content to operate the Berry Barn on Bloomingdale Avenue with Marcia. After settling back in the area last summer, the couple purchased the old fire station just west of Culbreath. Here, he hopes to begin a hydroponic farming project and share his knowledge with ag students at Bloomingdale High School.

Needy farmers in far-away lands may soon beacon him again. He will likely continue his life's work in other regions of the world should he get the call.

### BOB'S FARM MARKET

Bananas 19¢ per lb.

We raised our roof, not our prices! Shakes, Shortcake, Hot Dogs, & full line of fruits & vegetables.

604 E. Bloomingdale Avenue

654-6266

Citrus is in!

Stop in for all your Thanksgiving extras!



### DR. RICHARD E. ROGOVIN

Chiropractic Physician

Member of the Florida Chiropractic Association  
Member of the Hillsborough County Chiropractic Society

Member of the Academy of Industrial Health Consultants

### No Charge for Consultation

- Headaches • Neck Pain • Arm Pain
- Shoulder Pain • Disc Injuries
- Low Back Pain • Leg Pain • Hip Pain
- Numbness • Tension • Sports Injuries
- Workers' Compensation • Auto Accidents
- Most Insurance Accepted

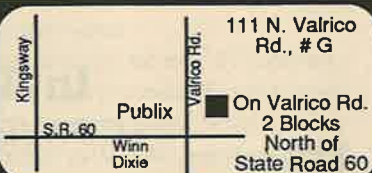
In Valrico

(Preferred Physician for Travelers, Mutual of Omaha, Blue Cross-Blue Shield, Health Care Compare and Progressive)



689-6359

111 N. Valrico Rd., #G  
(1 Block North of S.R. 60)



**RIVER HILLS**  
Country Club

"SERVING YOU EXCEPTIONALLY IS OUR PURPOSE"  
CALL 653-1554 FOR MEMBERSHIP AND GOLF INFORMATION

It's time to get out and enjoy a round of golf. Play our Joe Lee designed golf course which rivals all in our area. Call 653-3323 for starting times. Special rates available throughout the day! Play where you belong!

#### EFFECTIVE OCTOBER Greens Fee & Cart

|         | Before 1:30 | After 1:30 |
|---------|-------------|------------|
| Weekday | \$45.       | \$29.      |
| Weekend | \$50.       | \$29.      |



The Sign  
of the  
Times



FRANK OR REBECCA ST. PIERRE

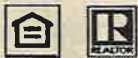
BLOOMINGDALE'S (AND BRANDON'S)  
#1 REALTOR FOR THE LAST 3 YEARS

Listings Sold To Listings Taken  
Ratio In Excess Of 95%

Do You Want Your Home Listed Or Sold?

CALL  
FRANK OR REBECCA ST. PIERRE  
685-6510

Brandon Office  
777 W. Lumsden Rd.  
Brandon, Fl 33511



## Good Neighbors Alafia's Number One Parent

by Mandi Oros

Suzy Wiesenhart moved to Valrico from Columbus, Ohio in 1990. Along with her came her husband Tom, seven year-old daughter, Amy and son Micheal, aged nine. When she first moved here, Suzy took the position of secretary of the Homeowners Association for River Crossing, and with this step, she began her career in volunteerism.

At Alafia, Suzy began as the vice president of programs for the PTA in 1992. Her leadership qualities pushed her to the forefront as she became president of the active organization in 1993, and this year Suzy is in her second term as head of the PTA, pulling double duty as program chairman as well.

Not only did Suzy have her hands filled with the duties of the PTA, but she also took a job typing for St. Stephen's Catholic Church of Alafia. Also, in her spare time, Suzy tutors a fourth grader in reading.

Suzy plays an active role in "Reading Parents", a program in which parents occasionally go into the classrooms and read

books. Suzy reads in both Micheal and Amy's classes. Her volunteer hours add up as a member of the Safe School Committee and the School Improvement Team. These organizations help to ensure that

Alafia's students get to school safe and on time. Currently, they are trying to implement a program to help cut down on the number of tardies.

Suzy is the Co-Chairperson of Technology at the school, and with that, she tries to come up with fund-raisers to buy new computers. They are planning on several fund raisers this year, instead of one huge campaign. The committee has already



Suzy Wiesenhart

come up with such ideas as penny drives and General Mills cereal label collections.

Teachers, students and parents are also familiar with Suzy's songs, which she writes to promote special events.

Involved in a serious auto accident last year, Suzy is still dealing with the pain from injuries she sustained. She has not let it get in the way of her volunteer efforts as she has accumulated over 1,200 hours of volunteer time since coming to Alafia.

## Person to Person

Each month *The Gazette* staff will ask some of your neighbors questions related to the community. Their answer and photograph will appear in our new Person To Person feature. This month, we asked your neighbors...



Debbie Ayers

Which intersection or roadway in this community do you feel requires the county's attention?

"Bell Shoals and Bloomingdale, (but since that is underway), I would say the county needs to do something about the speeding on Nature's Way to slow down the high school kids." - Debbie Ayers, East



George Besa

"We've lived here 11 years and we avoid heavy traffic times so we don't have a problem with any of the intersections." - George Besa, West

"Rosemead and Bell Shoals. I had an accident there last year that could have been prevented if there had been a light. We can hear accidents when they occur and cars slamming on brakes because our house backs up to that area." - Sharron Sheilds, 15-year resident of East



Sharron Sheilds

HIGH SCHOOL SOCCER PLAYERS - 10% OFF ALL APPAREL!

## #1 YOUR SOCCER STORE

Everything Soccer at Competitive Prices  
COMPLETE TEAM OUTFITTERS

PUMA hussell PATRICK mite deoie

LAZERX adidas umbro

BRANDON  
526 Oakfield Dr.  
Brandon, FL 33511  
(813) 654-GOAL

STORE HOURS  
10:00 - 6:30, Mon. thru Sat.



EXPIRES 11-5-94

Tampa  
2682 E. Fowler Ave.  
Tampa, FL 33612  
(813) 977-GOAL  
Store Hours:  
10:00 - 6:30 Mon. thru Sat.

Palm Harbor  
34856 U.S.Hwy 19 N.  
FOUNTAINS PLAZA  
Palm Harbor, FL 34684  
(813) 781-SHOE  
1-800-299-GOAL  
Store Hours:  
10:00 - 6:30 Mon. thru Sat.

10% OFF SHOES 20% OFF GOAL KEEPER EQUIPMENT



## Bits N Pieces

Around Bloomingdale



by Vanessa Clark  
Club News

The West Point Parents' Club will hold its annual winter seminar at Sable Park on Dec. 31, from 10 a.m. until noon. The guest speaker will be West Point graduate and current U.S. Military Academy liaison **Robert Holcomb** of Bloomingdale.

Any interested candidates and their parents are welcomed to attend.

According to co-president **Fran Gregos**, the organization, which boasts nearly 54 members of several counties, currently meets four to five times a year. These meetings include picnics, seminars, and the annual Army/Navy football game.

Five graduates of Bloomingdale High School are currently West Point cadets. They include **John R. Gregos, Jr.** ('95), **John R. Hughes** ('96), **Hector M. Melendez, Jr.** ('97), **David D. Watkins, Jr.** ('97), and **Robert C. Holcomb** ('98). Hughes is currently ranked number one academically in his class.

For more information on the West Point Parents' Club, contact Fran Gregos of Bloomingdale.

### Fitzsimmons-Reysen Wed

Doreen Fitzsimmons and Jimmy Reysen exchanged vows Sept. 15 in a ceremony performed by Pastor Jeff

Hagel at Crosswalk Christian Community Church in Bloomingdale.

Serving as the maid of honor was Linda McPadden of Rhode Island. Doreen's attendants included Cheri Satterfield of Seffner, Marie Hollings of New York, and Sharon Townsend of Vermont.

Andy Zimmerman of California served as best man. Groomsmen were Roy Sowerby and Harv Nelson, both of Brandon.

A reception was held in the Fellowship Hall following the ceremony. The Bloomingdale residents are planning dual careers in the ministry.

### Bloomingdale Births

Congratulations and welcome, **Elizabeth Ashley Gray**. Elizabeth was born on Sept. 4, to **Robert and Tammy Gray**.

**Brad and Audrey Staggs** are also the new parents of a baby daughter, **Kristin**, born Sept. 23.

### Welcome Neighbors

We would like to welcome the following new residents to the community.

**Pat and Connie Hudson** and their children, **Brittany** and **Patrick**, are military transfers from Ligonier, Pa. **Peter and Madeline Konowicz** and their children **David** and **Peter** have recently moved into Fairway Manors. The



Mr. and Mrs. Jimmy Reysen

family has just returned from a tour of duty in Belgium. Transferring from Roswell, Ga., are **Mike and Leslie Hickland** and their children **Andrew** and **Kate**.

### Happy 90th

**Birdie Briant** of Bloomingdale was joined by relatives and friends who gathered to celebrate her 90th birthday at a party held in her honor on Sept. 17 in the fellowship hall of Crosswalk Christian Community Church. Mrs. Briant, who is a lifelong resident of Hillsborough County, was honored by five generations of family.

Hosts of the party were her children and their spouses **Orlan and Jerry Briant** of Brandon, **Gloria and Lloyd Rector** of Valrico, and **Jim and Ann Paige** of Lakeland.

Mrs. Briant has 12 grandchildren, 14 great-grandchildren, and three great-great-grandchildren.

Please send all social news to *The Bloomingdale Gazette* at 3232 Lithia Pinecrest, Suite 101, Valrico 33594, or call 681-2051. We want to hear from you.

### SPORTS MEDICINE ORTHOPEDIC SURGERY



### BRANDON ORTHOPEDIC ASSOCIATES

Laser • Arthroscopic Surgery  
Hip & Knee Joint Replacements  
Knee • Hand • Foot • Back Surgery  
Mini-Incision Carpal Tunnel Release  
Sports Medicine

**John D. Okun, M.D.**  
Board Certified

**Robert J. Maddalon, M.D., M.S.**  
Board Certified

**Lance T. Sisco, M.D.**  
Board Eligible

**684-3707**

Hours By Appointment  
721 Robertson Street  
Brandon, FL 33511

### Life In These Times

## Even With Rain, Water Woes Continue

by Daniel Farrer

It looks like we all got a little surprise in the mail last week. No, I don't mean a credit card application that offers a real 6.5% interest rate for longer than 12 months; I mean that nice little letter we got from the county public utilities department.

For those of you that read it, it was probably no big surprise. But for those of you who knew it wasn't the right time of the month to get your water bill and just chucked it into the garbage, this may be news for you. Your water and sewer bills are going up. Surprise!

These last few years water has been a big issue in the county with our normal rainfall much below desired levels. In the last four years, I've watched water costs go up to a point that it has made me do some adjusting to accommodate my wallet. Actually, the water charge is something I can handle, but the sewer charge is really a killer. Every time I flush I feel like I need to throw money in the toilet to go along with the water.

To try and do our best to help conserve, I have installed new shower heads, put bricks in the tank, cut back to washing full loads of clothes only, banged on the bathroom door when the kids stand in the shower too long, etc., etc., etc.

I even went further and calculated how much water I was using on the lawn during the year. If I hired a couple of neighborhood kids to help me lay the sod down, it's cheaper for me to let it die every year and re-sod it than it is to keep it alive during the dry season. How's that for a catch 22? Maybe the sod farms and the county public utilities department are working together.

I talked to my wife about the issue and she sees the situation in a very realistic way. The water folks need to pump "X" amount of water for "X" amount of dollars to meet their operating costs. If they sell less water (conservation), they must raise rates to meet costs. Seems pretty simple doesn't it?

So far this summer we have had a significant amount of rainfall. If the rain pattern goes back the way it has been, we will be looking for a few more creative measures to conserve. May I offer some possible new recommendations for the future?

1. Buy a \$14 bilge pump from the hardware store. When you shower, plug the drain. When you're through, pump the water out on the lawn.
2. Use paper plates, cups and plastic forks every other month instead of regular dishes. You'll save half a year's water from your dishwasher.
3. Eat out at restaurants more often
4. Shampoo your hair every third day.
5. When you brush your teeth, don't rinse, just swallow.

6. Get an electric razor.
7. Use the garbage disposal only once a day.
8. Kill your grass, get a fancy rake and make neat patterns in the sand like Japanese gardeners do.
9. Get an extra day out of those clothes by buying a stronger perfume or aftershave.

Finally, when you're driving by a shopping center or other large businesses and it's raining so hard you can't see to drive, check to see if their sprinkler systems are on. You might be surprised.

**Sportscard World**

AREA'S LARGEST

All Sports Cards

Featuring: Autographs & Memorabilia Gallery of Celebrities

Comics & Non Sports Cards

More located 1/4 mile East of Hwy 75 - near Brandon's new mall

Hours: Mon.-Fri. 10-7 Sat. 10-5

Open Sunday Thanksgiving and Christmas

**651-1132**  
938 W. Brandon Blvd

**SMILE WRIGHT**

**653-1455**

*With a Gentle Touch*

Cosmetic and General Dentistry

- Porcelain Veneers • Bleaching
- Cosmetic Bonding • Crown & Bridge

All performed in a safe, comfortable, gentle setting.

**BEAUTIFUL SMILES!**  
710 Oakfield Drive, Suite 251  
Brandon, FL 33511

**Diane Wright, D.M.D.**

*We follow strict infection control standards*

Delta Dental Insurance

MasterCard VISA

Evening Hours by Appointment

**ROBERT MORRIS**  
C.P.A., P.A.

"PROFESSIONAL  
ACCOUNTING  
&  
TAX SERVICE"

- Tax Service
- Bookkeeping
- Management Services
- Day & Evenings Appointments

3302 Bell Shoals  
**681-4164**

**FINE WINES**  
Expanded Selection  
In-Store Wine Tastings  
Fridays 6-8 pm

**GIFT BASKETS**  
With & Without Spirits  
Gourmet Foods & Confections  
All Price Ranges

**10% Discount**  
On Baskets Ordered  
Before December 1

**Bloomingdale LIQUORS**

**661-2228**

Located in the Publix/Wal-mart Plaza

*We Match Walgreens Ads*



## Church and Synagogue News

### Bell Shoals Stages Living Christmas Tree

"A Touch of Heaven" rings in the holiday season at Bell Shoals Baptist Church when the drama and music ministries present The Living Christmas Tree '94. Performances are scheduled for Dec. 9 through 12 at 7 p.m. including matinees on the 11th and 12th at 3 p.m.

Tickets are \$7 each and are available by mail order only. (See insert in this month's Gazette)

This year's production was written by two members of Bell Shoals and is comprised of two acts. The first act will take the audience back to the 40's and a look at the era of Big Band music. A musical jubilation, sure to be enjoyed.

### Christmas in the 90's

Holiday ideas for women and their families will be the focus of "Christmas in the 90's" sponsored by the Bell Shoals Baptist Church Women's Ministry on Thursday and Friday, Nov. 10 and 11, beginning at 7:15 p.m. in the special events center.

Tickets are \$10 per person which will provide guests

with a notebook full of recipes and craft ideas for the holidays. Each evening will include a holiday craft demonstration, meal preparation ideas, holiday music and the drama "A Cup of Christmas Tea", and a Christmas Tea reception.

Tickets are available by calling the church office at 689-4229.

### Celebration At St. Mark's

Passersby will think they are in a time warp but it's really the Pilgrim Village at St. Mark's United Church on Saturday, Nov. 19. The second annual celebration will feature arts and crafts booths, food and dessert and church members dressed in full Pilgrim attire.

The celebration marks the beginning an annual tradition at the church observing Pilgrim Sunday the following day. On Nov. 20, there will only be one service at St. Mark's at 11 a.m. Members have a chance to get back to their Pilgrim roots during this special service when they will worship as the Pilgrims did, men and women separately in the sanctuary.

### Reception Honors Pastor

Members and friends joined in a congratulatory reception for Dr. Alan J. Pickering last month at Bloomingdale Presbyterian Church. Dr. Pickering was the recipient of the prestigious F. William Stahl Award in Communications and Management Research at the Triennial meeting of the World Fellowship of YMCA Directors in Geneva Park, Ontario.

A former interim pastor of the church, Dr. Pickering continues to assist the local membership with his counsel and uplifting wit when he serves as a guest minister.

The 49ers+ of Bloomingdale Presbyterian remained active during the summer presenting a "drama" at the annual church picnic, making Chrismons for their sister church in Guatemala, and completed an additional 75 re-hydration kits for medical missionary work. Each kit, when added to water, literally saves lives of infants and children who are suffering for lack of water and food.

Member, Dennis Boyette, was named "Older Adult Lay Leader" of the church. This honor is given yearly to a person over 70 years of age who has shown outstanding devotion to the work of the church. He will be honored, along with other leaders, at a luncheon in November at the Forest Hills Presbyterian Church.

As the name indicates, this group is open to anyone who admits to being 49 or over and meets on the first Monday of the month at the church which is located at 710 E. Bloomingdale across from Bloomingdale Square. The group celebrates special events on Saturdays. For further information on the 49ers+, call 654-3699 between 9 a.m. and 1 p.m. weekdays.

### Youth Leaders Depart

A fond farewell was bid to two valuable members of the St. Stephen's Catholic Church family. Terry Nadeau, the church's very active Senior High Youth Director, has transferred with husband Mark to Maryland. In addition, the church has lost the services of Pam Emery, coordinator of religious education, whose husband Douglas has been transferred to Ft. Lauderdale. Church members wish them all the best in their new communities.

### Youth Seminar, Concert

Members of Crosswalk Christian Community Church invite area teens to attend a youth seminar and concert on Nov. 12, at 7 p.m., at the church which is located at 1603 Bloomingdale Avenue, across from the high school. The evening will be highlighted by the performance of musical group, "High Places."

## Community Loses Leader, Madeleine Golletz

by LaWayne Wyatt

Bloomingdale resident and longtime Brandon community leader Madeleine Golletz lost her four-year battle with cancer last month and died at the age of 53. She is survived by her husband, Hugh, and mother, Nina Kohley.

Since moving to Brandon in 1984, Mrs. Golletz gave unselfishly of her time and talents to improve the quality of life in her community. That same year, she answered an ad for someone to assist with the annual Fourth of July Parade, and ended up running the show for nearly 10 years.

Despite the setback brought on by her illness, Mrs. Golletz continued to organize even larger July 4th parades. Additionally, she was instrumental in organizing a second parade. In 1992, what was the Veterans' Day Parade, was replaced by the now popular Christmas Parade.

Under her leadership, Brandon's July 4th parade grew from a relatively small-town function to the 4th largest parade in the state. Although her failing health kept her from chairing the 1994 Christmas Parade, she remained interested and provided guidance until her last days.

She was a former president of the Presidents' Roundtable of Brandon, member of the Brandon Newcomers Club, chief usher at St. Stephens Catholic Church, and delighted children as Mrs. Claus during the annual lunch with Santa at Center Place.

## Sue Babulski Realtor



Selling Your Home?  
Let Sue get it  
**SOLD!**

Better Service - Better Results

**685-5633**

Ask for Sue Babulski

910 Lithia Pinecrest Drive  
Fax: 689-5940  
After Hrs.: 661-2324

**Better Homes and Gardens**  
Marie Powell  
ASSOCIATES, INC. REALTORS



by  
**Sonia M. Ruiz, M.D.**

*Pediatrician*

Featuring the finest medical care for:

- Infants
- Children
- Adolescents

Most health plans accepted.

**684-1881**

4316 Bell Shoals Road  
Village Center

Not Enough Hours In The Day? Too many Errands  
And Not Enough Time? We Can Help!!

## TO THE RESCUE

TO  
THE RESCUE  
(813) 220-4130  
(24 Hours)

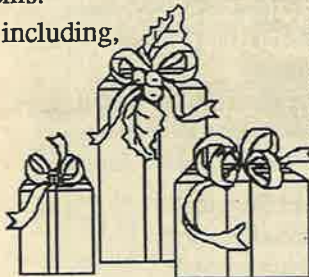


A personal service company that promotes integrity and values their clients. We provide the personal touch when responding to your needs.

We specialize in the things you don't want to do, don't know how to do, or don't have time to do. We do the unusual and difficult, we solve problems.

We offer a wide variety of services to including, (but not limited to):

- Gift Shopping
- Short & Long Distance Courier
- Roofing
- Plumbing
- Electrical
- Refrigeration & Air Conditioning
- Tree Trimming
- House Painting
- Free estimates



We will ship and wrap your holiday gifts. Let us wait in those long lines for you!

Of course, you'll have to fill out and sign any applications, but... the "Headaches are Ours"!!

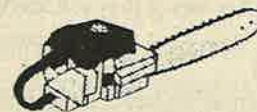
TO THE RESCUE can allow you to enjoy the more pleasant aspects of life!

Licensed & Insured



## BLOOMINGDALE RENTAL

All your rental needs at your LOCAL Rental Store.



- Airless Paintgun
- Lawn Equipment
- Rug Doctor Carpet Cleaner
- Propane
- U-Haul
- Chipper/Shredder
- Chain Saw
- Pressure Washer
- Power Pruner

**10% OFF**  
ANY Rental  
with ad - Nov. only

Hours:  
M-S 7:30-5:30  
Sunday 10-2

**684-4070**

11104 West Bloomingdale Avenue



**Gourmet Gift Baskets**

Elegantly Designed, With or Without Spirits, All Price Ranges!

- Gourmet Foods
- Confections
- Wines & Spirits

**CORPORATE ACCOUNTS**

**10% Discount**  
On Baskets Ordered  
Before December 1

*Bloomingdale*  
**LIQUORS**

661-2228

883 E. Bloomingdale Ave.  
In the Publix/Walmart Plaza



# Holiday

## Bloomingdale Liquors

Plenty of Holiday Cheer can be found at Bloomingdale Liquors located in the Publix/Walmart Plaza. Just in time for the Holidays, Bloomingdale Liquors has expanded their selection of wines and will feature gourmet gift baskets.

Just because Bloomingdale Liquors is a spirits shop, don't expect wine in all their baskets; many gifts are designed without spirits but still have plenty of holiday cheer! The small gourmet bags are ideal for neighbors, teachers and co-workers. Plus there are many elegant gift baskets perfect for clients, bosses and special friends, all of which can be customized to meet your needs.

To acquaint you with their wines, Bloomingdale Liquors will be holding in-store wine tastings every Friday evening from 6pm-8pm.

Bloomingdale Liquors' prices are competitive with chain stores, and they match Walgreen's advertised sales.

Open 10am-9pm Monday through Saturday & 1-6pm Sunday.

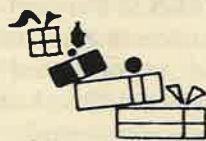
## Red's Sporting Goods

Christmas shopping for your favorite athlete is just down the road at Red's Sporting Goods, 867 W. Bloomingdale in the Kings Row Plaza. Red's is the real authority in team sports. And although soccer, football, and basketball equipment are available, Red's has the best and most complete baseball selection in the area just in time for the upcoming season. Whether it's the popular Easton bats or Rawlings pro model gloves that your all-star is looking for, you'll find it at Red's. Because Red's is where the serious athlete shops.

College and professional team logo caps, apparel and gift items are also well-stocked for the holidays. Red's carries a complete line of athletic wear and shoes in children's and adult sizes, featuring a complete line of Nike and Reebok shoes.

The friendly people at Red's are always ready to assist shoppers with their needs and are happy to answer questions or offer advice.

Red's is open Monday through Friday from 10 a.m. to 8 p.m., Saturdays from 9 a.m. to 7 p.m. and Sundays 12:30 to 6 p.m.



**We are like a craft show every day.**

**FROM THE HEART**

You can find that special gift for everyone on Santa's list

Unique, handcrafted gifts for all occasions.  
New line of quality wood furniture.  
Lay-away & Gift Certificates Available

M-Sat. 10-8pm  
Sun. 1-5pm

651-9395



Royal Oaks of Bloomingdale  
3220 Lithia Pinecrest Rd., St.# 103 & 104  
(Next to Winn Dixie & Pinch a Penny)  
New crafters always welcomed

## From The Heart

It is almost impossible to walk into From The Heart and walk out empty handed. And now, during the holidays, the store at 3220 Lithia Pinecrest, is brimming with beautifully, unique, handcrafted items.

Over 200 crafters have their works on display - gift items for the home, for that special teacher or friend, even for husbands and kids, and especially for you. Whether it's made of porcelain, silk, wood, or cloth, you will find those special gifts for giving or that special something you've wanted for yourself. The best part is this - you will be sure to find that perfect gift for the person who has everything. You might even get all your Christmas shopping done in one store.

Owners Kelli and Crystal want to bring you the best available crafts in the area, so they and their crafters pay great attention to detail. Special orders are gladly taken and lay-aways are accepted in time for the holidays.

From the Heart IS like a craft show everyday! Treat yourself to a visit. You will come back for more.

## Red's Sporting Goods

*"WHERE THE SERIOUS ATHLETE SHOPS"*  
1994 HOLIDAY SALE!

Umbro Soccer  
Shorts \$3.00 OFF  
reg. price

T-Shirt Sale!  
Buy 1 Logo T-Shirt  
Get 1 at 1/2 Price!

**Come to the REAL AUTHORITY in team sports.**  
The best & most complete baseball selection in the area!!!

Rawlings PRO Model  
Gloves - PRO 6,  
PRO 1000BF,  
PRO 1000 HBS, Pro 15 B



**\$10.00 OFF!**  
Any shoes \$50.00 or more  
excludes closeout table

**867 W. Bloomingdale, Kings Row Plaza**

M-F 10am-8pm  
Sat. 9am-7pm  
Sun. 12:30-6pm

654-7411

Pay with your  
Honorcard! Mastercard,  
Visa or Discover also  
accepted.

offer expires 12-25-94

## Boundary Blunder Befuddles Residents

by Rozel Sciulli

Just when Bloomingdale residents thought the high school boundary debate would not affect them, a map printed in a recent issue of The Brandon News made all their old fears re-surface.

Although the issue was closed in the minds of Bloomingdale residents months ago when they were assured those students who live within the walls would all remain at BSHS, the map clearly illustrated that a portion of Bloomingdale East would have to attend the new Durant High School.

According to the map, those residents living to the east of Culbreath Road (Erin Arbor, Oakcrest and Culbreath Cove) fell into the Durant High boundaries. To almost make matters worse, a careful review of the map received by The Gazette revealed that all side roads to the east and west of Culbreath, travelling north from The Spot and stopping at Erindale, were now in the Durant boundaries. This included the new section of The Greens.

One quick call to the school administration office cleared up the matter once and for all.

The map received by both local newspapers was an "old map," according to boundary expert Sharon LaGrant. She went on to explain that since there are no roads in the woods between Mason Oaks on Lithia Pinecrest and Oakcrest inside the walls of Bloomingdale, Culbreath and Erindale had to be named in boundary lingo that excludes the homes on those roads and on their feeder streets.

The definitive answer from school boundary officials is that all students residing within Bloomingdale East, West, Oaks and Estates, as well as all communities down Bell Shoals to the east and west, yet north of the Alafia River, will attend Bloomingdale High School in the fall of 1995.

School board members approved their staff's recommendation to remove Mason Oaks, Lithia Ridge, and River Hills from Bloomingdale, while keeping all of the Buckhorn communities and those along Bloomingdale Avenue east to Pearson Road.

## REC CENTER, from pg. 1

multi-purpose courts, tennis courts, children's play area with apparatus, and softball field.

The county is adding a sidewalk around the perimeter of the park from the west property line at Bloomingfield to the southern boundary along Canoga Park. The winding path will feature two exercise stations and will be separated from the street by 24-inch wooden posts that will border the park to prevent cars from accessing the property. The 27-space parking lot has room for additional spaces, as the need arises.

According to Lois Kessler, a recreational services manager, the center will come equipped with the essentials for opening, but added that the community would offer extras, for example, a microwave for the kitchen.

The BHA has already offered its support, and plans are underway for a spring picnic that hopefully will coincide with the

## Christmas

Do you have a humorous tale from your family book? If you do, please share with your neighbors. We will select the stories to run in the December issue. Please send your handwritten tale to The Bloomingdale Gazette, 101 Pinecrest Road, Suite 101. Photographs are also welcome. Remember to include your phone number on all materials.



# Gift Ideas



TEACHERS' HELPER, INC.

Parent-Teacher Store

Your local outlet for...

|                                 |                              |
|---------------------------------|------------------------------|
| Construction paper              | Summer workbooks             |
| Tempra paint                    | Bulletin board supplies      |
| Science project materials       | Beginning readers            |
| Classroom supplies              | Seasonal idea books          |
| Supplementary materials         | Raffi tapes & records        |
| Math manipulatives              | Christian learning materials |
| Science kits                    | VBS supplies                 |
| Preschool activities idea books |                              |

684-0688

109 S. Margaret Street  
Brandon, Florida 33511

## Teachers' Helper, Inc.

Does your child have trouble learning geography facts? Take your child on a GeoSafari, the award winning electronic game that makes exploring geography an adventure. If arithmetic is a stumbling block, your child can learn multiplication through rap music with *Learning Wrap up* cassettes.

Whether your child's skills need honing in math, reading or science, Teachers' Helper, Inc., offer unique educational aids and materials to make your child's learning experiences positive . . . and fun!

Allow owner Tim Roberts and his staff of certified teachers to demonstrate learning techniques from *Rock 'N Learn* phonics books and tapes to grasping fraction concepts by "hands on" systems using pizza pies. Reinforce reading skills with the *I Love Reading!* stories and comprehension activities. Science buffs will appreciate the various science kits and materials for future projects.

Teachers' Helper, located at 109 S. Margaret Street, Brandon, also offers a wide range of audio and visual aids for the classroom teacher. For more information call 684-0688.

## Fields Art & Framing

Fields Art & Framing is not your usual art and framing gallery. The moment you enter the door you can see, and feel, the difference. The walls are filled with unique and exquisite art and framing design.

The shop specializes in "hard to do jobs" and is well known for its award winning picture framing.

Since all staff members are professional artists, customers are assured of getting the very best in advise on color and design. The trademark of the shop is *quality and service* - traits well appreciated by the gallery's growing number of satisfied customers..

Simply the Best      Award Winning

Quality & Service      Serving the community  
Our Trademark      since 1989

Featuring

*Mat. Carving*      15% Off  
CUSTOM FRAMING  
Offer expires 12/15/94

We Frame Memories

654-8616

**FIELDS** Art & Framing

3244 Lithia Pinecrest Rd  
Valrico

## Four Seasons

Stop in Four Seasons Gifts and Crafts for just about all of your holiday shopping! Most gifts are made by local craftsmen and artists and many can be personalized and detailed with those distinctive touches! Custom gift baskets are one of the many special gifts you will find.

Four Seasons offers many exciting classes. Those available, but not limited to are; tole painting, basket weaving, porcelain dolls, kids classes, stain glass, sewing, applique, quilting, ceramics and seasonal classes. Sign up now for holiday gift classes! For more information call 6544438.

They have been in business for two years and have become known as the place to shop for affordable quality items.

Four Seasons Gifts and Crafts is located in the Kingsway Plaza at 1273 Kingsway Road. For more information call 654-4438.

## FOUR SEASONS Gifts & Crafts of Brandon, Inc.

Handcrafted Gifts & Supplies

### Classes:

Tole Painting  
Basket Weaving  
Porcelain Dolls  
Kids Classes  
Stain Glass  
Sewing  
Applique  
Quilting  
Ceramics  
and more . . .

Custom  
Gift  
Baskets

Store Hours:  
M - Thurs. 9 - 9  
F - S 9 - 6  
Closed Sunday

654-GIFT  
1273 Kingsway Road  
(in the Kingsway Plaza, near Food Lion)



## LIGHT, from pg. 1

Libertini suggested that residents "volunteer to buy a signal" at a cost of approximately \$226,000. Separate fund raising drives in the Carrollwood area will yield signals this year for two communities.

Of concern to residents is the forthcoming recreation center at Park West and with it, the pedestrian traffic comprised primarily of children who will be crossing Bell Shoals daily. Libertini said that pedestrian traffic generally does not increase priority.

Fourth on the county's priority list is the intersection of Bell Shoals and Brooker Road, where an average of nine preventable accidents have occurred each year since 1991. Libertini said the four-way stop there is an interim measure until a signal can be installed sometime in 1995.

## Resident To Head New Center

by Rozel Sciulli

For nine years, Donna Clouse, has been waiting for her job to move closer to home. That's when the Bloomingdale East resident first heard about the proposed plans for a rec center in Park West. After heading programs at rec centers all around eastern Hillsborough County, the 16-year veteran of the parks department has been named recreational specialist of the new Bloomingdale Center.

She will head a staff of four who will plan activities and programs for the children and adults who will use the center during the day, after school, and in the evenings.

Clouse, currently at Turkey Creek Recreation Center, is eager to bring her talents home.

"I'm not just an administrator, but a hands-on person," she said. "You don't know if something is working unless you're right in there doing it too."

One of her first priorities will be to work out after-school transportation for children attending Alafia, Lithia Pinecrest, Brooker, and Kingswood Elementary

Schools. Rec centers across the county have sizeable enrollments in their after-school programs, and Clouse expects the Bloomingdale center to be a busy place from 2:30 to 6 p.m.

Community input is vital to the success of the center, according to Clouse. She said she will be looking for residents to make up a Volunteer Support Group of between four and 12 members. The group will discuss the needs of the community and how these can be met through programs at the center. "The kinds of classes and activities we offer will be decided by what the residents' interests are."

Residents interested in joining the volunteer committee are asked to call Donna Clouse at 757-3822. She said she will take some initial information as she forms a list for future contact.

Clouse is a Tampa native and a graduate of Brandon High School and Hillsborough Community College. She and husband Steve have two children, Stephen and Kristen.

## Message

anecdote or touch-  
Christmas memory  
e it with us and your  
best personal holiday  
ber issue of *The Ga-*  
written or typed story  
ette, 3232 Lithia  
Valrico, 33594. Pho-  
and can be returned.  
r name and phone



# Lithia Lynx



by **Donnamarie Kibler**

"Spirit Day" at Lithia Springs Elementary School will have more meaning since students will be sporting a school T-shirt they designed themselves! The new design reflects the student's creativity in both art and logo. A school-wide contest, coordinated by art teacher **Mary Ellen Houghton**, was held last year. The winning selections were presented by **Alisha Demmi**, 4th gr.; **Angela Holt**, 6th gr.; **Debra Kraunelis** (the finalist), 5th gr.; and **Lindsey Robinson**, 5th gr.

The PTA reports T-shirt sales are booming and the Lithia Lynx are proud to be a part of the latest fashion statement.

November is "Child Safety and Protection" Month at Lithia Springs. Bike helmet sales will begin Nov. 18, kicking off state one of the Bike Rodeo scheduled in January.

## A Matter of Principal

### Project Puts Kids' Safety First

by **Susan Lizer, Principal**  
**Alafia Elementary School**

Alafia Elementary School is greatly enhanced by the consistently high level of parent support and involvement. A newly developing example of this is "Project Safe Call," a program which will notify parents in a timely manner if a child is absent from school.

"Project Safe Call" is the outgrowth of a suggestion from Ed Dodenhoff, an Alafia parent, who is working with Suzy Wiesenhart, Alafia's PTA president, and other volunteers and staff members. It will require parents to enroll in the program, provide emergency numbers, and call a PTA phone number to record a message explaining their child's absence. These messages, combined with information from teachers, will be compared with the list of absentees.

A call will be placed to the number provided by parents of students whose absence has not been reported by the parent. Volunteers and staff members will also be contacting parents of students who do not make it to class by 8 a.m.

"Project Safe Call" will begin as soon as all necessary equipment and procedures are in place, perhaps by early this month. Its success will be assessed periodically and adjustments made in response to user input.

This project relates to Alafia's School Improvement Team's goal of providing a safe school climate. It is another fine example of how school, parent, and community cooperation makes otherwise impossible benefits possible!



Students proudly display their winning entries in the school-wide T-shirt contest. Front (l-r) **Alisha Demmi** and **Debra Kraunelis**; Standing (l-r) **Lindsey Robinson**, **Angela Holt**, and their teacher **Mary Ellen Houghton**.

This month's general membership meeting will be held Tuesday, Nov. 8, at 7:15, and it will be hosted by the fourth graders.

A skate party is planned on Tuesday, Nov. 15 from 6:30 to 8:30 p.m. Students may purchase tickets for \$2 at the school.

Finally, LSES will participate in the countywide Great American Teach In on Nov. 17. Many parents have volunteered to share their career information with the children on this day.

## LA CUBANITA

**Spanish Restaurant & Bakery**

*"The only Cuban Restaurant in Brandon"*

**Breakfast, Lunch & Dinner**

M - W    7 a.m. - 7 p.m.

Th. - Sat. 7 a.m. - 9 p.m.

**Different lunch specials daily**

**661-2253**      723-A Lumsden Road

Dine in or take out      S. W. corner of Lumsden & Kings

**News Tips?**  
**Call**  
**681-2051**

# WANTED

- INFORMATION:  
Anniversaries  
Weddings  
Birth Announcements  
Neighbor Parties  
Vacations/Trips  
Out of Town Visitors  
Club Information  
Interesting Facts

Call *The Bloomingdale Gazette Office* at  
**681-2051**

## JACKSON NATIONAL LIFE

### Our Lowest First-Year Premium With Top Guarantees!

Jackson National Life's Yearly Renewable Term to Age 100 (Preferred) offers the protection you want, with the guarantees you need-- at a cost that's hard to beat! Check it out.

**\$250,000 Face Amount**  
**Initial Annual Premiums**

| Issue Age | Male      |           | Female    |           |
|-----------|-----------|-----------|-----------|-----------|
|           | Nonsmoker | Smoker    | Nonsmoker | Smoker    |
| 30        | \$ 247.50 | \$ 295.00 | \$ 247.50 | \$ 290.00 |
| 40        | 297.50    | 465.00    | 252.50    | 302.50    |
| 50        | 430.00    | 942.50    | 337.50    | 607.50    |
| 60        | 875.00    | 1,830.00  | 557.50    | 1,200.00  |

We guarantee premiums for 5 years!  
For more information, call today!

**Carolyn J. Jones**  
**628-9680**

Stated rates are based on Jackson National Life's Yearly Renewable Term-100 #1600A. Slight yearly increase. Premiums may be paid annually, semiannually, quarterly, or through a monthly bank draft. Guaranteed convertible to age 65, to any permanent, level-premium life policy offered for conversion by the Company. Premiums must be paid to keep the policy in force. Home Office: Lansing, MI



*You are invited to*  
**River Hills Country Club!**

*Lunch - served Monday through Friday daily specials and soup/salad bar.*

*Brunch - Sundays 11:00 - 2:00. Choose from a great assortment of entrees. Reservations are suggested.*

*Banquets - Personal or business function capabilities for 8-200. Reserve your holiday parties now!*



**RIVER HILLS**  
Country Club

Call 653-1554 For  
**Reservations and Information**

# It's Time!

*...for Bold New  
Leadership.*

# SHARPE FOR CONGRESS

- **Less Government**
- **Less Taxes**
- **In Touch with the Issues!**

To Get Involved Contact  
**Mark Sharpe for Congress**  
**1111 N. Westshore Blvd.**  
**Tampa FL 33607**  
**813/288-0442**

Paid for by Mark Sharpe for Congress



# Bruin Beat



by Tiffany Waller

During the month of October, the Bruins were involved in many activities. Some of these included student council elections and club sign-up day. We were also involved in our own spirit week.

Many candidates ran for student council offices. Each had to prepare a short speech to tell why they wanted to hold office and represent their school. The outcome of the election was very close but congratulations to the winners. The 1994-95 student council officers are as follows:

**8th Grade - Luke Morris**, president; **Rustin Dyer**, vice president; **Canice Scherlzo**, secretary.

**9th Grade - Annie Ruiz**, president; **Amanda Wilson**, vice president; **Carla Cook**, secretary; **Susan Robinson**, treasurer.

Good luck to all of you.

At the end of September, the students had a day during which they could sign up for the club(s) of their choice. Burns's clubs include Fellowship of Christian Athletes, Future Farmers of American, Future Homemakers of America, the Music Club, National Junior Honor Society,

# Bulls Eye



Students in visible places and in positions of leadership led Bloomingdale High School news last month, when class council's were chosen and student government officers were elected.

Heading this year's S.C. as its president is senior **Mike Davis**. The other officers are Sr. vice president, **Erin Johnson, Jr.** vice president **Mike Allegretti**, secretary **Nicki Foster**, treasurer, **Bridget Jenkins**, and historian **Kenyatta Henderson**.

Senior Class Council members are **Sean Taylor**, president; **Joanna Wright**, vice president; **Kim Phillips**, Secretary, **Robby Rudes**, treasurer; **Mark Cobb**, historian; and senators **Ted Holler**, **Jessica Domico**, and **Tobin Peterson**.

and the Student Advisory Committee. These organizations hold meetings every half-day of school. We are anxious to see what each club will produce.

This year's Spirit Week was a great success. It was held Oct. 24 through 28. Each day, students had a different theme to dress up to. Monday was punk day, Tuesday was backwards/inside out day, and Wednesday was mis-match/clash day. On Thursday, students dressed in their favorite team's colors. Finally, Bruin students got a chance to be someone else's double on Friday, which was twin day. The Bruins also participated in two pep rallies.

Junior Class Council members are president **Jeff Prugh**, vice president, **Matt Umbarger**, secretary **Jocelyn Lockhart**, treasurer, **Lori Kensel**, historian **Teneshia Benoit**, and senators **Erin Andrews**, **Keri Sutterfield**, **Tamethea Simmons**, and **Kelly Foster**.

**Holly Nygard** is president of the Sophomore Class Council. The other officers are **Brianna Nation**, vice president; **Susan Lofraddo**, treasurer; **Melissa Wayson**, secretary; **Teresa Caputor**, historian; and senators **Dan Halloway** and **Stacy Reich**.

Cheerleaders also hold a position of leadership at BSHS - leaders of school spirit and hostesses at various functions. The 1994-95 cheerleaders are sophomores **Chrissy Nichols**, **Amanda Miller**, **Stacy Reich**, and **Katie Jaskiwitz**; juniors **Tara Ozols** and **Ashley Ussery**; and seniors **Naima Carter**, **Jennifer Varvil**, **Christina Brescia (captain)**, **Joanna Wright**, **Carie Kurek**, **Tricia Stock**, **Molly Keaton**, **Sara Davis**, **Christy Jarrard**, **Katie Hepner**, **Danielle Bougere**, **Amy Borchik**, and **Mary Cobb**. The cheerleaders are sponsored by Mrs. **Karen Snapp**.



**Family Law Concerns?**

- Dissolution of Marriage
- Visitation/Custody
- Child Support

**Call for a FREE Confidential Appointment**

Jack G. Kramer, Attorney at Law  
101 American Center Place (Brandon Blvd. & Hwy. 301) **626-7266**

**CAT HOTEL A COUNTRY CAT HOUSE**

Make Your Holiday Reservations Early!

Rates \$6.00 - \$8.50 per day

Let us pamper & care for your family's cat. We have everything cats love.

- Large units with huge windows overlooking gardens (for lizard, bird & squirrel watching).
- Aquarium views - 3 level treehouses.
- Soft music, daily playtime, 24 hr. attendants
- Thanksgiving Dinner serving Butterball Turkey.

Come see our beautiful hotel before making your cat's care arrangements. It's worth your peace of mind.

M-F 9-5 Sat. 9-3 Closed Sun.

**654-2287 (654-CATS)**

15501 Boyette Road or call for brochure

# Gator Tales



Alafia parents don't have to worry about their children going through the woods or wandering too near the pond as they walk or ride bike on their way home. That's because new fences have been added around some parts of the school property. According to principal **Susan Lizer**, the wooded areas to the west of the school and the pond to the north were just too appealing to the children.

"We had the fences put up so no child could wander into that area, and so we could protect the children from

strangers who might hide in the wooded areas," she said. "Children are safer this way, yet they may still admire the natural surroundings."

When Mrs. Lizer realized the children were cutting a path through the woods on their way home in the afternoon, she brought the potential hazard to the attention of area director **Larry Martin** approximately 18 months ago. Following a study by the county school's risk management department, the need for fencing was cited and later approved by the school board.

### PTA Happenings in November

A math and science program will be featured at this month's PTA General Meeting on Nov. 15, at 7 p.m.

A school-sponsored Book Fair will be held the week of Nov. 14-18. Parents will be able to attend the fair on the 15th, the evening of the PTA meeting.

# KEN FRANKLIN HOMES

a division of Franklin Development Corporation

If you liked Cinnamon Trace, Country Gate, Fox Run and Cimmaron Run, you'll love

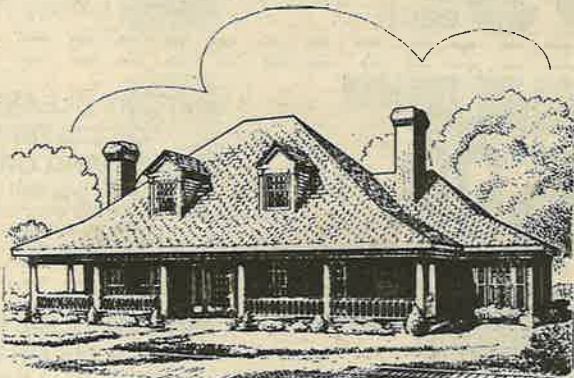
**Cambridge Cove**  
16 Lakefront lots  
62 Wooded Lots

**Within A Gate Enclosed Community**

Overlooking Bloomingdale Golfers Club

Bloomingdale High School  
Burns Junior High School  
Alafia Elementary School

No one else can provide you with all these amenities.



**Another KEN FRANKLIN HOMES Community**

An elegant blend of stately custom residences and well-detailed preferred plans.

Homesites will start in the forties and may be temporarily reserved with a fully refundable five hundred dollar deposit.

Realtors gratefully welcomed.

P.O. Box 1558 • Valrico, FL 33594-1558 • Phone: (813) 681-4385 • Fax: (813) 681-1227

For a sneak preview call **Bryan Thomas** or **Kevin McGuinness**



Alafia students were joined by parents in country line dancing at the annual hoe-down. The hoe-down was a culmination of a physical ed unit in which Alafia kids boot scooted and boogied their way through exercises.

## Primary Prep Says . . .



Quality Learning Environments

**T**hank you, Bloomingdale for 7 fun - filled years.

**H**appy to take children from 6 weeks to after-school age.

**A**lways open to visitors.

**N**ever too busy to listen.

**K**ids are everything to us!

**S**ee what Primary Prep is all about. Stop by soon!



Hours 7 a.m. to 6 p.m.

Bloomingdale Ave.

Owner: Christine Terrell  
Director: Gail Bjornson  
LIC # C-HC-193

Bloomingdale West

Rosemead

Bell Shoals

3720 Canoga Park Drive

Just South of Wal-Mart

Hours: 7am to 6pm

**654-1942**





## What Kids Are Thankful For



As we prepare to celebrate Thanksgiving, some fourth graders from Mrs. Garcia's class at Lithia Springs Elementary School share those special things for which they are thankful.

**I am thankful for**

- ...my home, toys, and family - Jessica Daniels
- ...having a house, family, friends - Alexandra Seley
- ...clothes, food, air to breathe, and shelter - Stephen Liverpool
- ...my bunny - Bobby Hundley
- ...Lithia Springs - Cherese Green
- ...my family, my beautiful house, all my relatives, food, my pets, my school, my teachers, my clothes, my friends, and lots, lots more - Laura West
- ...a nice family - Donald Furlong
- ...a nice house to live in, good food to eat, friends to play with, clothes to wear, and a nice family - Lindsay Rinehart
- ...my family and a good home - Kyle Adkins
- ...my family, somewhere to live, something to eat every day, and friends to play with, too - Marisa Sanchez
- ...hockey, soccer, my family - Karl Stephans
- ...my friends - Danny Seal
- ...my mom and dad and my sister Sara - Jessica Labrecque
- ...school - Mark Wohlfahrt



### Hats Off



#### Students Display Art

Six students at Lithia Springs Elementary had their art displayed at the Holiday Inn Crowne Plaza Hotel at Sabal Park during the month of October. The art exhibit was a showcase for disabled adult and student artists.

Lithia fifth and sixth graders Tim Smith, Michael DeLaCruz, Joshua Jimenez, Jamie Nichols, Shawn VanLeyen, and Tim Robbins all had their artwork displayed thanks to the efforts of Cheryl Kuck,



Lithia art students whose work was featured on exhibit were Shawn Van Leyen, Tim Smith, Jamie Nichols, and art specialist Mary Ellen Houghton.

gallery director and president of Artists International Foundation, who is actively involved in promoting art education. In addition, Shawn VanLeyen of Bloomingdale was given a special award for his art-

work. The students are instructed by Mary Ellen Houghton, Lithia art specialist, who was recognized during the show's opening reception for her work with learning disabled students.

### At Sylvan, better grades are just the beginning.

At Sylvan, we pinpoint your child's needs, develop a personalized program and deliver it in a positive, fun and caring environment. Call Sylvan, today, to learn how we can help your child.

**684-2400**  
OAK PARK PLAZA  
711 W. LUMSDEN RD.  
BRANDON, FLORIDA



**SYLVAN LEARNING CENTER**

Reading • Writing • Math • SAT/ACT • Study Skills • Algebra

YOU'RE IN GOOD HANDS WITH

## Allstate®

We Sell Homeowners and Automobile Insurance, Regardless of Driving Record or Prior Claims.

**DON BUA**  
681-5303

**STEVE BRIGGS**  
681-5303

611 E. Bloomingdale Ave.,  
(Next to Bloomingdale Square)  
Allstate Insurance Co. and Allstate Life Insurance

## ED RAHAL, DMD

Dentistry for Adults and Children



Practicing in Brandon for 16 Years

Ask About Our Multi-Child Discount

**654-3399**  
3646 Lithia Pinecrest Rd.



### "EXPERIENCE THE DIFFERENCE"



## MAJIK TOUCH CLEANERS

MAIN OFFICE - For Information - 654-2323

|  |          |
|--|----------|
| APOLLO BEACH - 220 APOLLO BEACH BLVD.....                              | 645-1499 |
| BLOOMINGDALE - ROYAL OAKS SHOPPING CTR - LITHIA PINECREST RD.....      | 654-8113 |
| BLOOMINGDALE - 3509 BELL SHOALS RD. (JUST S. OF BLOOMINGDALE AVE)..... | 654-9292 |
| BRANDON - OAK PARK PLAZA - 709 W. LUMSDEN RD.....                      | 654-9541 |
| BRANDON - BEHIND BLOCKBUSTER - 901 W. BRANDON BLVD.....                | 684-4499 |
| ELFERS - PASCO SQUARE - 7307 S.R.54.....                               | 376-7307 |
| NEW PORT RICHEY - CHELSEA PLACE - 1420 SEVEN SPRINGS RD.....           | 372-1185 |
| NORTH BRANDON - KINGSWAY PLAZA - 1213 KINGSWAY AVE.....                | 653-4535 |
| PALMA CEIA - PUBLIX SHOPPING PLAZA - 1211 S. DALE MABRY.....           | 254-8676 |
| SEFFNER - NORTH GROVE PLAZA - 702 N. GROVE PLAZA.....                  | 684-5897 |
| VALRICO - VALRICO SQUARE - 1985 E. BRANDON BLVD.....                   | 654-2324 |



**99¢** each

### SHIRTS LAUNDERED

VALID ON INCOMING ORDERS ONLY, LIMIT 10.  
BLOUSES, POLO & BOXED SHIRTS EXTRA  
Valid only with coupon.  
Not valid with other coupons or on sale items.  
COUPON EXPIRES 11-30-94



**\$500** OFF

ANY DRY CLEANING ORDER OF \$25 OR MORE ON INCOMING ORDERS ONLY  
Valid only with coupon.  
Not valid with other coupons or on sale items.  
COUPON EXPIRES 11-30-94



**\$300** OFF

ANY DRY CLEANING ORDER OF \$15 OR MORE ON INCOMING ORDERS ONLY  
Valid only with coupon.  
Not valid with other coupons or on sale items.  
COUPON EXPIRES 11-30-94



**20% OFF**

WEDDING GOWNS, DRAPERY CLEANING, BEDSPREADS, COMFORTERS/BLANKETS  
VALID ON INCOMING ORDERS ONLY.  
Valid only with coupon.  
Not valid with other coupons or on sale items.  
COUPON EXPIRES 11-30-94



**20% ALTERATIONS**  
VALID ON INCOMING ORDERS ONLY.  
Valid only with coupon.  
Not valid with other coupons or on sale items.  
COUPON EXPIRES 11-30-94



**Tax Topics**

**Recent Changes Affect Tax Credits**

by Robert J. Morris CPA, CTP

Recent legislation has eliminated deductions for club dues in years after 1993. The IRS recently issued regulations defining the term "club" which is disallowed as dues


in any club organized for business, pleasure, recreation or other social purpose. The definition affects deductions for country clubs, golf, athletic, airline, hotel and meal clubs as well as others. These new regs, however specifically allow business leagues, trade associations, chambers of commerce, boards of trade, professional organizations (such as bar, medical or CPA associations) and civic or public service (such as Lions, Kiwanis and Rotary clubs).

There are several ways to minimize taxes in an estate; one of which is the unlimited marital deduction. This allows a transfer, before or after death, of unlimited assets to a spouse without paying any estate or gift tax. However, a large tax may be due upon the death of the second spouse. Another option is the GST, or generation skipping transfer, which allows you to avoid at least one level of tax if it is intended to go to a grandchild. Currently the property is

taxed when passed to a child and taxed again passing from the child to the grandchild. Even though there is a GST tax on these transfers there is a once in a lifetime \$1 million exemption.

There is also continuing literature coming from the IRS that they are targeting partners of law firms in their continuing search for non-filers. Apparently recent IRS studies has issued a special audit guide for attorneys under its new Market Segment Specialization Program and are attempting to hold other partners, and the law firm itself, liable for part of the blame of having non-filers within the firm. Attorneys beware of this potential liability.

These are a few topics recently addressed concerning tax laws and potential taxes. If any of the above topics appear to affect your situation, you should seek advice from your tax professional to clarify the effect on your taxes.



**FAMILY DENTISTRY IN BLOOMINGDALE**  
Experienced and concerned professional care for the whole family  
\*LASER\*

**Dr. Ray Aquilina, D.D.S., P.A.**  
689-1529  
4320 Bell Shoals Rd.  
Village Center in Bloomingdale East  
Insurance • Military Insurance • VISA • Mastercard

**Business Notes**



**T. J.'s Wood 'N Thangs**

T. J. and Jewell opened Wood 'N Thangs at 3322-7 Lithia Pinecrest in late September, moving their country store from its Tampa location. The store specializes in wood furnishing for the home and will customize orders.

The owners, who have been in the wood furnishing business for nine years, mostly travelled to craft fairs and for two years were established at one of Tampa's largest flea markets.

At their new Brandon location, T.J.'s also carries stained glass, wrought iron work, collectibles, hanging flags, punch tin, wall decor, and dried flower bouquets. Passersby may have also noticed the wooden yard ornaments that decorate the outside of their store

**Top Realtors Listed**

Area residents and realtor, Frank St. Pierre, was named the top listing agent and top seller for the month of September at Coldwell Banker's Brandon office.

Local resident Luanna Russell was also recognized by Tam-Bay Realty's top producer in eastern Hillsborough County. She was named the top closer, top sales producer, and top lister for the month of August.

**La Cubanita**

Latin cuisine to tempt the taste buds has finally arrived in Brandon. As a bedroom community to Tampa, where restaurants specializing in Spanish, Cuban, and Puerto Rican foods are plentiful; a similar eatery and bakery has been long overdue in Brandon.

Located in the Oak Park Plaza (across from LaViva), La Cubanita is an off-shoot of the famed Florida Bakery in Tampa. Specializing in Latin pastries such as guava turnovers and rum-soaked cakes, and their trademark pressed Cuban Sandwich, La Cubanita also serves up full-course meals like roast pork with black beans and rice with plantains. They will also fill special orders for parties or food trays.

Take out or dine in, La Cubanita is open for breakfast, lunch, and dinner Monday through Wednesday from 7 a.m. to 7 p.m., and Thursday through Saturday from 7 a.m. to 9 p.m.

**Ariel's Bridal**

Rental and sales of bridal, prom, pageant, tuxedos, veils, and bridesmaid apparel are available locally at Ariel's.

Owner Ariel Rodriguez opened her speciality shop September 1st. Located near TECO at 109 East Robertson, Ariel and staff can assist you with many of your wedding needs. Order your wedding invitations, jewelry, cake tops, and wedding books in one place!

**NEED A DOCTOR?** FALL SPECIALS

**Physician Care WALK-IN CLINIC OF BRANDON**  
620 Vonderberg Dr., Brandon

**FAMILY PRACTICE and INTERNAL MEDICINE**

- SCHOOL SPORTS PHYSICALS \$22 WITH THIS AD.
- COMPLETE PHYSICALS \$139 REG. \$389. Includes EKG, Chest X-ray, urinalysis, 40 lab tests, stool blood screen, physical exam.
- SAVE OFF YOUR NEXT VISIT \$5 WITH THIS AD.
- FLU SHOT 1994-5 VACCINE \$10 WITH THIS AD.

JERRY A. WISHIK, M.D. (Board Certified Internal Medicine)  
Mon 9-5 Tues 9-5 Wed 9-5 Thurs 9-5 Fri 9-5  
Call for details 684-1777

\* not valid for special promotions or insurance  
\*\* one patient per coupon  
\*\*\* High school physicals and under; any lab additional  
\*\*\*\* Insurance NOT accepted for this special/physical exam & pap additional  
Ad expires 12/31/94

**Mail Boxes Etc.® is The Post Office Alternative®**

**NOTARY**

You can trust the experts at MBE to handle your postal, business or communications needs.

- COPIES
- SHIPPING
- STAMPS
- PACKAGING
- OVERNIGHT
- OFFICE SUPPLIES
- MAIL SERVICE
- FAX
- PACKING SUPPLIES

**MBE MAIL BOXES ETC.®**  
Bloomington Square  
813 E. Bloomington Ave.  
(Wal-Mart Shopping Ctr.)  
689-4998 / fax 689-4328

UPS Authorized Shipping Outlet  
Copies by Konica

**Customer Appreciation Month**  
(offer good through the month of November)

|                         |  |                               |
|-------------------------|--|-------------------------------|
| 1000 Business Cards     | 2¢ Copies  | 15% OFF                       |
| \$9.99 with this coupon | 8 1/2 X 11 White bond paper 100 copies min. with this coupon | UPS Shipping with this coupon |

**ERA ROBERTSON REALTY, INC.**  
Each office independently owned and operated

**JOHN C. LOGAN, GRI**  
BROKER/SALESPERSON  
"JOHN SERVES"  
424 S. Kings Ave. • Brandon, FL 33511  
813-685-5522 Office  
1-800-633-6158 Toll Free  
813-6854119 Fax  
653-6241 24 Hr. Voice Message




**Happy Thanksgiving!**

**DAHLIA INSURANCE**  
DIVISION OF DAHLIA CORPORATION

**"We want your Homeowners Business"**

AUTO \* HOME \* BUSINESS  
LIFE \* HEALTH

**DICK RUSSO** President  
**RICK RUSSO** Vice President  
**CHARLIE THURMAN** Life/Health  
**SHIRLEY MARTIN** Auto/Home

(813) 685-0861  
FAX (813) 685-6393  
223 LITHIA-PINECREST ROAD  
BRANDON, FL 33511





# Undefeated J. V. Bulls Tops In County

Gazette Staff

Bloomingtondale 201, Opponents 50.

That about sums up the 1994 football season for the Bloomingtondale junior varsity Bulls. And because county awards are not conferred upon J.V. teams, the Bulls on paper alone are the undisputed champs of Hillsborough County after dominating their opponents in six games.

That translates into a lot of potential for the future of Bloomingtondale varsity football.

Although starting and ending their season with nail-biting, overtime contests, the Bulls had a mid-season rush that left opponents begging for time to run out.

An uncertain start saw the Bulls just get by Leto 27-26. That first overtime game was not to be the last, but no one bothered to tell the Bulls' defense.

Gaither, (26-0) King (74-0), and East Bay (48-0) had not a prayer of a chance of getting into the Bloomingtondale endzone. Chamberlain was almost the season spoiler, but the Bulls pulled out a season-ending 26-24 overtime win.

"That game against King resembles what happens in a total team effort," said head coach Robert Gleich, who sincerely gave credit for the players' instruction to Col. Umbarger and Coach Moseby.

Gleich did not want to single out any one of his outstanding sophomore and junior players, instead he chose to point out their "great work ethic and their eagerness to learn."

He also credited the junior high programs and youth football organizations with the early training provided to his players.

## Athletic Calendar

### Bulls' Events In November

- Nov. 5 X-Country Regionals  
Swimming/Diving Districts  
Basketball (G) at Armwood
  - Nov. 10 Football at Brandon  
Basketball (G) vs. Tpa Tech
  - Nov. 10-12 Swimming/Diving State
  - Nov. 12 X-Country State
  - Nov. 15 Soccer (G) at Plant City  
Basketball (G) at Robinson
  - Nov. 17 Basketball (G) vs. Plant
  - Nov. 18 Soccer (G) at Plant  
Basketball (G) at Jefferson
  - Nov. 21 Basketball (G) vs. Hillsboro
  - Nov. 22 Soccer (B&G) at Jefferson  
Wrestling at Armwood  
Basketball (B) vs. Armwood
  - Nov. 28 Basketball (G) at Plant City
  - Nov. 29 Soccer (B&G) vs. Gaither  
Wrestling at Tampa Tech  
Basketball (B) vs. Tpa Tech
  - Dec. 1 Soccer (B&G) at Leto  
Wrestling vs. Robinson  
Basketball (G) at Brandon  
Basketball (B) at Robinson
  - Dec. 3-7 Soccer (B&G) King Tourney
- NOTE: Game Times  
Soccer 7 p.m. Single - 5 & 7 Double  
Wrestling 7:15 p.m.  
Basketball J.V. 6 p.m./Varsity 8 p.m.  
Saturdays 1:00 and 2:45

# GO BULLS!

## FAST • LOW COST • COLORFUL PRINTING

10% OFF ORDER WITH THIS AD

- Flyers
- Newsletters
- Letterheads
- Church Bulletins
- Brochures
- Much More

Images Etc. at Mail Boxes Etc.  
Wal-Mart Shopping Center  
689-4998 or 854-8441



RIVER HILLS

Country Club

## Afternoon Junior Tennis Clinics

Directed by Scott Coleman

| Programs             | Days | Times  |
|----------------------|------|--------|
| Pee Wees (4-6)       | T&Th | 3:30-4 |
| Future Stars (7-12)  | T&Th | 4:00-5 |
| Advanced             | T&Th | 5:00-6 |
| Pee Wees (4-6)       | M&W  | 3:30-4 |
| Future Stars (7-12)  | M&W  | 4:00-5 |
| Intermediate (13-17) | M&W  | 5:00-6 |

### Sessions:

Nov. 7 - Dec 1  
Jan 9 - Feb 2

Maximum No. is 6 per class

653-1554

3943 New River Hills Parkway

## Tennis Anyone?



Tip Of The Month  
by Scott Coleman

Practice - No big surprise here, but most people go out and play a couple of hours of social doubles per week and this is simply not enough tennis to improve. You can only get better by hitting tennis balls. Find someone willing to practice with you and work out hard as often as you can. Practice with a purpose instead of just whacking at the ball. Each session, try to accomplish something, such as hitting crosscourt forehands, slice approach shots, crosscourt first volleys or working on your consistency.

A great practice partner is a ball machine. You learn a shot through repetition and working out your problem areas during practice. In a match situation, you have very little time to think about your stroke - it should come naturally. This is done by practice, practice, and more practice.

# BRACES



Neal A. Stubbs, D.D.S., P.A.  
929 Oakfield Dr. • Brandon • 685-3511

No  
Down  
Payment  
\$ 79  
per mo.

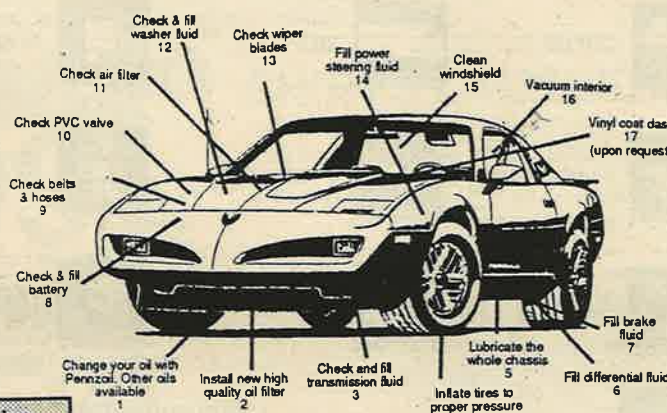
Standard Active Treatment \$2,149 to \$2,449  
Records Fee \$158 • Retainers \$245 to \$325  
#08450 #08550 #08750



# DiSticks OIL CHANGE

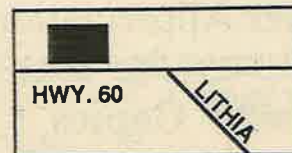
NO EXTRA CHARGE FOR YOUR CHOICE OF OIL  
PENNZOIL 30WT, 10W30, 10W40, CASTROL GTX 20/50,

## 17 POINT OIL CHANGE \$21.95 (SEE COUPON BELOW)



314 E. BRANDON BLVD.  
684-8705

ACROSS FROM SCOGGINS



HOURS:  
Monday - Friday  
8 a.m. - 6:00 p.m.  
Saturday  
7:30 a.m. - 5:00 p.m.  
Sunday  
11 a.m. - 3:00 p.m.

Owned and Operated by a BI. Resident

DiSticks  
OIL CHANGE  
\$3.00 OFF  
OUR  
FULL SERVICE  
OIL CHANGE  
REG. \$21.95  
With  
Coupon \$18.95  
PRICE INCLUDES CHOICE OF  
OILS: PENNZOIL 30W, 10/30, 10/40,  
CASTROL GTX 20/50  
Coupon Expires 11/9/94

Struts  
or  
Shocks  
\$5.00  
OFF  
Coupon Expires 11/9/94

BRAKE  
SPECIAL  
\$49.95  
(PER AXLE)  
INCLUDES:  
✓ NEW BRAKE PADS OR  
SHOES  
✓ RESURFACE DRUMS &  
ROTORS  
✓ REPACK WHEEL  
BEARINGS  
✓ INSPECT & ADJUST  
HYDRAULIC SYSTEM  
✓ SPECIAL SEMI-METALIC  
PADS ARE EXTRA  
Valid only with coupon. Not valid with  
other coupons or on sale items.  
Coupon Expires 11/9/94

- Transmission Fluid Change
- Differential Fluid Change
- Radiator Flush
- Fuel Injection Service
- Brake Service
- Tune-Ups
- Belts & Hoses
- Valve Cover Gaskets
- CV Boots





**BHA Meeting**

The regular monthly meeting of the Bloomingdale Homeowners' Association will be held Tuesday, Nov. 8, at 7:30 p.m., in the Community Office, 3232 Lithia Pinecrest, Suite 101, Royal Oaks of Bloomingdale. All dues paying homeowners are invited to attend.

**STD Meeting**

The regular monthly meeting of the Bloomingdale Special Taxing District board of trustees will be held Monday, Nov. 14, at 7:30 p.m., in the Community Office, 3232 Lithia Pinecrest, Suite 101, Royal Oaks of Bloomingdale. Residents are invited to attend.

**Election Day**

Florida's general election will be held Tuesday, Nov. 8. Polls will be open from 7 a.m. until 7 p.m. Local, state, and national offices will be on the ballot, including county commission, gubernatorial, and congressional seats.

**Great American Teach-In**

Be a teacher for a day or even for one hour by volunteering to participate in the Great American Teach-In, on Thursday, Nov. 17, at all county schools. Residents who have a career, hobby, or special interest to share with students, contact the local elementary school assistant principals, Mrs. Susan Johnson, occupational specialist at Burns, and Bill Frank at Bloomingdale.

**Class Reunion**

The Brandon High School class of 1975 is making

plans for its 20th reunion. Graduates are asked to call 661-5266 to provide mailing address and telephone number in order to receive reunion information.

**County Planning Workshop**

Members of Hillsborough County's Metropolitan Planning Organization is conducting a series of workshops to focus on the future of transportation in the county. One such meeting is set in Brandon at Center Place on Wednesday, Nov. 30, at 7 p.m. The county is looking for residents' input about streets, high speed rail and commuter rail, and bus system transportation as well as bike and pedestrian paths.

**Mostly Pops Orchestra**

The Mostly Pops Orchestra will perform on Saturday, Dec. 3, as part of the Brandon Balloon Festival at Sabal Park. The concert will begin at 5:15 p.m. and will feature the 50-piece orchestra under the direction of Robert Romanski. They will be joined by vocalists John and Mary Kate Wilson. Sponsored by Center Place, the concert is free and open to the public.

**Lunch With Santa**

The 12th annual "Lunch With Santa" will be held on Saturday, Dec. 10, at 11 a.m. at Center Place. It is open to children of all ages. After lunch, the children may visit individually with Santa. Parents must accompany their children during lunch. According to a spokesperson for Center Place, reservations must be made and prepaid in advance. The cost is \$2.50.

20 YEARS EXPERIENCE

# Grable

STATE CERTIFIED PLUMBING CONTRACTOR  
ACTIVELY INSURED/BONDED

## Plumbing Co.

**FAST SERVICE**

7 - DAY - 24 HOUR

### PLUMBING SERVICE

- Hot Water Heaters, Repaired or Replaced Same Day
- We Service All Makes and Brands
- New Toilets, S.S. Sinks
- Garbage Disposals, Faucets
- Emergency Sewer and Drain Cleaning Machines
- Main Sewers Replaced
- Sump Pumps, Septic Problems
- Underground Leaks
- Repipe Specialists

**ULTRASONIC LEAK DETECTION**

Using the most advanced ultrasonic equipment we locate under-slab leaks with pinpoint accuracy.

**NON DESTRUCTIVE LOCATING**  
One Day Service

\$5 OFF with this coupon

VISA  
MasterCard  
Discover

**DRAINS OPENED FAST**

RADIO DISPATCHED

# 685-3636

## Warner's Nursery

- Landscaping &
- Sprinkler Systems

10706 Bloomingdale Ave., West  
Btwn. 301 & Providence

# 689-5081

## GRACE C. LEWIS, CPA

Tax & Accounting Services

3905 Kristin Place  
Valrico, FL 33594

(813) 681-4548  
FAX 684-1608

**DELINTZ.**  
DRYER VENT CLEANING SERVICE

**BRUCE JORDAN**  
1303 N. Burton Street  
Plant City, Florida 33566  
(813) 759-8109

Reduce Drying Time • Reduce Dryer Damage & Maintenance Costs • Save Energy • Reduce Potential fire Hazard

**MARY KAY**

Barbara Borchers  
Independent Skin Care Consultant

4111 Quail Briar Dr.  
Valrico, FL 33594  
813-653-2509 or  
1-800-755-4850

**IWT** INTERNATIONAL WATER TREATMENT, INC.

RONALD J. DELAVAN  
CONSULTANT

3908 Santee Way  
Suite 100  
Valrico, FL 33594

Bus: (813) 653-1957  
Res: (813) 685-1711  
Fax: (813) 653-1957

## Sonny's Tire & Auto

"Your Hometown Auto Service Center"

**LARGE ENOUGH TO SERVE YOU BUT SMALL ENOUGH TO KNOW YOU.**

Map showing location at 10312 W. Bloomingdale Ave.

**QUAKER STATE**  
The intelligent oil™

**One Stop Car Care**

- Electrical • Computer Diagnostics • Emission Control • Oil Change • Brakes • Suspension • Alignment • Air Conditioning • CV Joints • Tire Service

**COMPLETE EXHAUST SERVICE**

- Catalytic Converters
- Custom Exhaust
- 4 Wheel Drive Specialists
- All Other Automotive Needs

(Free exhaust inspection!)

**WEEKDAYS**  
7:30 a.m. - 6:00 p.m.

**SATURDAYS**  
7:30 a.m. - 12:30 p.m.

**626-4556**

|  |  |   |  |
|--|--|---|--|
| <b>COOLING SYSTEM FLUSH &amp; FILL</b><br>\$25.00  | <b>A/C SERVICE</b><br>\$10.95                | <b>LUBE, OIL, FILTER, &amp; 25 pt. SAFETY CHECK</b><br>\$9.95 | <b>4 WHEEL ROTATE &amp; BALANCE &amp; FRONT END ALIGNMENT</b><br>\$39.95 |
| <b>MAINTENANCE TUNE-UP &amp; ENGINE PERFORMANCE INSPECTION</b><br>\$36.99 4 Cyl. \$46.99 6 Cyl. \$56.99 8 Cyl. | <b>DISC OR DRUM BRAKE SERVICE</b><br>\$49.99 | <b>CV JOINTS INSTALLED</b><br>AS LOW AS \$125.00 & UP.        | <b>ROTATE &amp; BALANCE</b><br>\$19.95                                   |

**Classified**

**EMPLOYMENT OPPORTUNITIES:**  
Operator, Envelope Equipment, 2nd shift. Excellent opportunity & benefits. Apply: Florida Envelope, 9208 Palm River Rd., #302, Tampa, FL 33619

**AD REPS:** The Bloomingdale Gazette is now hiring adreps. P/T or F/T, call now at 681-2051.

**CLEANING SERVICES:**  
DUST BUSTERS Cleaning Service: Superior workmanship with a personal touch. Call Leslie today for free estimate 684-9572 or 684-5494.

Joseph Aversa  
Owner  
FL (813) 689-9192  
Beeper (813) 873-6639  
Fax (813) 651-4685  
Licensed • Bonded • Insured

# EXCEL SERVICES

One Call Does It All

**Services:**  
Pressure Washing, Painting, Carpet Cleaning, Carpet Sales and Installation, Janitorial

**Truck Mounted Equipment for carpet cleaning**

**Painting:**  
Res./Comm.

**WRITERS:** Part time, freelance writers needed. If you have always wanted to try your hand at writing, this is a great opportunity. Call 681-2051.

**FOR SALE:**  
2 tall bookshelves - \$30/ea., 1 adult desk - \$75, 1 child desk - \$40, patio furniture (redwood); 2 chairs & loveseat - \$60, white curved top vanity w/glass - \$48, and many sets of curtains - \$4/per set. Call 651-4067 evn.

**Residents who are...**

**CAKE DECORATOR:**  
Flowers, airbrush in many designs; Power Rangers & Lion King. JoanterMors 654-6556.

**BABYSITTERS:** Dustin Braswell (16) 689-8555  
Angela Reiser (18) and Kimberly Reiser (15) 684-6006.  
Erin (17) and Beth (14) Schlossnagle 653-0453

**AVON REPRESENTATIVES:** Ruth Calandro, 689-0212.

**MARY KAY CONSULTANTS:**  
Barbara Borchers, 653-2509  
Carol Williams, 689-8076

**PORTRAIT ARTIST:** Children/Adults, Pencil, Pastels, Watercolor. J. Oros, 689-2087  
Classes in drawing, colored pencil, pastels available 12 yrs. and up. 689-2087



# WHAT'S NEXT IN THIS PUZZLING SEQUENCE?

# 1, 2, ?

Naturally, you know the answer  
to that. And the answer to getting  
your house **SOLD** is just as easy.  
In fact, it's as easy as 1, 2, ...  
Simply Call:

**CHUCK FRENZ** <sup>DONNA</sup>**SULLENBERGER**  
685-5894 684-3929



**GET IT SOLD!**

**CHUCK FRENZ** <sup>DONNA</sup>**SULLENBERGER**  
685-5894 684-3929

The Prudential   
Florida Realty  
689-8102