



The Bloomingdale Gazette

Volume XIII, Number 11

Published by the Bloomingdale Homeowners Association, Inc.

November 1993

Community Rec Center Proposed For Park West

by Rozel Sculli

When a \$20 million county referendum was passed in October, 1992, Parks and Recreation director Ed Radice remembered that Bloomingdale residents had requested a community center back in 1988. Now that it's time to start spending some of those millions, Radice has placed Bloomingdale at the top of the needs list.

Now, unless residents have any objection, Park West will be the new home of a 3500 square foot community recreation center that the county will staff year-round. It is expected that the Bloomingdale Homeowner's Association will give its approval to the project at this Tuesday's BHA board meeting.

County parks and recreation representative Lois Kessler and Joel Jackson, director of the parks bond program, presented their plans to the BHA board last month and will attend Tuesday night's meeting.

Since June, the BHA has conducted surveys in the community to determine what improvements residents would like to see made at Parks East and West. The responses have been varied.

The greatest response came from residents whose homes back up to one of the parks. They would like the

county to erect a fence to keep trespassers out of their yards. At their October meeting, the BHA board sympathized with the concerns of those residents, but president Randy Wolfe pointed out that the board must make its

Alotto. "Now that it's finally here, I wouldn't want to lose it. Kids need a place to recreate."

The proposed project would cost \$250,000, according to Jackson, who pointed out that the Park West location is the only possible site. He added that improvements would also be made to Park East, "possibly in the way of picnic shelters and additional playground equipment."

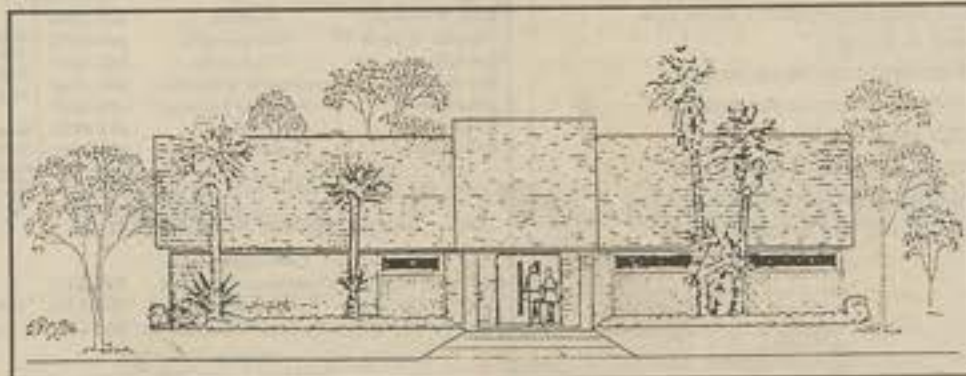
Included in the center would be a community meeting room, an arts and crafts room, game room, indoor and outdoor restroom facilities, and a kitchen. The entire package for Park West would include new playground equipment, additional parking, and landscaping that is required by the county when it erects a new building.

And Jackson said, "a fence of some kind will enclose the entire park area."

Perhaps the most important aspect is that the county plans to staff the center all year. Kessler said that the county has budgeted for personnel ranging from a recreation director to maintenance crew.

She pointed out that it would be the job of county personnel to plan programs based on the needs of the

See Parks, page 2



The proposed Bloomingdale Community Center will be located in Park West.

recommendations based on what will best serve the needs of the entire community rather than a few residents.

"Our recommendation will be for the county to proceed with its plans for a community center unless we hear strong opposition at the November meeting," Wolfe said.

"We've waited a long time to get (a center)," said resident and former Special Taxing District trustee Peter

Volunteer Firefighters Celebrate 20th

by David Barnhardt

The two trucks and the brush vehicle sit silently in the station garage while the firefighters, busy with their many duties, await their next call. This is the scene on most days, when the volunteers are posted at the Bloomingdale Volunteer Fire Department.

For 20 years now members of the Bloomingdale VFD have been battling blazes, saving lives, and putting themselves in the line of danger in an area bordered by Turkey Creek Road and S.R. 60, Culbreath and Lithia Springs Road, and west to Kings Avenue. Their new home is fire station No. 27 on East Bloomingdale Avenue and Little Road.

The volunteer agency was formed in 1973 after an auto accident took a young girl's life at Bloomingdale and Bell Shoals. The accident caused some confusion among the fire departments in the area, which did not fall within the response zone of existing departments. The Brandon Fire Department, then located at Brandon Blvd. and John Moore Road, responded to the call. As a

result of the confusion, a new, all-volunteer station was established on Bloomingdale Avenue.

Don McKeon, a former Tampa city firefighter, served as chief until 1975, and operated his company out of a converted milking barn on Bloomingdale Avenue, now a local produce stand. Those first volunteers used a 1947 model truck that fit through the front door of the barn with only a few inches clearance. The fire department supplied the structure with its first electricity, telephone, and running water.

After being housed in a county facility and yet another barn during the 70s and 80s, the volunteers moved into their present location in 1990. John Listrow is the current chief.

Chief Listrow has been associated with the department for over 10 years. He moved back and forth between Florida and Connecticut as a fire chief before being offered his current post. Like the

See Volunteers, pg. 14



Members of the Bloomingdale Volunteer Fire Department have been battling blazes in the area for 20 years.

Lithia Parents Campaign For Child Safety

by Sue Narup
Correspondent

Parents and faculty of Lithia Springs Elementary School are bringing a message to the community - Hillsborough County ranks first in the nation in bicycle-related injuries. And as part of their campaign for child safety, they are sponsoring several programs which will climax in a Bike Rodeo and Safety Fair on Saturday, Nov. 13, from 9 a.m. to 1 p.m. on the school grounds.

According to the Journal of the American Medi-

cal Association, each year about 530 children are killed in bicycle accidents and 443,000 are treated in emergency rooms for injuries. Nearly 50,000 cyclists, mostly between the ages of five and nine, suffer a serious head injury each year. Studies report head injury as the primary cause of death in 70 to 80 percent of all bicycle fatalities.

While many parents worry about kidnapping, drugs, and violence, the fact remains that preventable injury is the number one health risk for America's

children age 14 and under.

The National Highway Traffic Safety Administration and U.S. Department of Transportation identify Florida as first in the nation's highest bicycle fatalities in 1992 - 27% above the national average. More important, Hillsborough County rated first in Florida.

A study conducted in the Seattle area indicated that helmets can prevent 85% of bicycle-related head trauma and 90% of brain injuries which can result in

See Rodeo, pg. 14

Town Meeting

BHA Hosts Rep. Buddy Johnson, Rec Department

Guest speakers at this month's meeting of the Bloomingdale Homeowner's Association will be State Rep. Buddy Johnson and spokespersons from the Hillsborough County Parks and Recreation Department. The monthly meeting will be this Tuesday, Nov. 9, at 7:30 p.m. in the Community Office, 3232 Lithia Pinecrest Road, Suite 101.

It is expected that the BHA board

members will give their approval to the county's proposed construction of a community recreation center in Park West (see related story).

According to BHA president, Randy Wolfe, residents who have questions about the project are encouraged to attend the meeting.

Rep. Johnson plans an open forum appearance where residents are invited to ask questions of the state legislator.

BLOOMINGDALE COMMUNITY PAGE

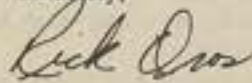
ONLY

Dear Bloomingdale Resident,

Most of us, when we make plans for the future for our business, professional practices, or even personal lives, rely on the continuation of conditions we have experienced in the past or see occurring in the present. Such assumptions of continuity occur naturally because they are rooted in what we know, what we have seen happen, and especially, what we have seen work. It is experience that gives us confidence in our plans and makes us comfortable with them. To assume discontinuity and project alterations from recent and current conditions is to venture into the unknown. It means selecting among a number of other possibilities, not one of which is as certain as what is currently happening. In this thought process there is obviously more risk and less confidence, and so we tend to avoid it.

However, it is the alteration of present conditions, not their continuation, that we must expect in the future—in more areas and in, most cases, at a faster pace. Thus, we need a new approach for planning our futures, an approach that assumes that change is more likely than continuity thereby enabling us to understand the changes that are coming and to make use of them.

Sincerely,



Rick Oros
President

OFFICERS

BLOOMINGDALE HOMEOWNERS ASSOCIATION, INC.
3232 Lithia Pinecrest Road
Suite 101
Valrico, Florida 33594
681-2051

Randy Wolfe	President	684-0079
Russ Lembke	Vice President	685-7193
Rick Oros	Secretary	685-0866
Jim Wiley	Treasurer	684-7825

Directors

Jeff Campbell	689-9650	Ronda Paremore	654-4475
Ted Grable	685-7193	Walter Schaffer	654-6651
Ian Horn	681-2051	LaWayne Wyatt	685-2072
David Lees	681-3999		

Bloomingdale Special Taxing District

Rick Pitrowski	President	661-1344
Thomas Brophy IV	Vice President	653-3201
Joe Ligouri	Treasurer	681-9655
Sue Hadden	Corresponding Secretary	685-4160
John Gunn	Recording Secretary	689-1017
Ron Mabe	Trustee	684-8924
Bob Stalker	Administrator	685-2901

Bloomingdale Mobile Watch

Core Committee		
LaWayne Wyatt	Coordinator/Scheduler	685-2072
John Britton	Treasurer	681-1553
Steve Schneider	Equipment Manager	685-8378

Members
David Guy 681-5943
Paul Keimer 681-4701
Rick Borling 684-2022

Bloomingdale Oaks Special Taxing District

P.O. Box 3132
Brandon, Florida 33589-3132
William Grace President 685-2817

The Bloomingdale Gazette

3232 Lithia Pinecrest Road • Suite 101
Valrico, Florida 33594
681-2051
Monday - Friday 9:30 a.m. - 12:30 p.m.

Bloomingdale Homeowners Association, Inc.	Publisher
Rick Oros	President
Rozel Scullin	Editor
Erin Mule	Writer
Melanie Plesce	Writer
David Barnhardt	Writer
June Oros	Administrative Assistant/Layout Editor
Harriet Gombos	Graphics Editor
JoAnne Scott	Ad Representative
Shirley Farrer	Distribution Manager
Circulation Assistants	Rent A Kid delivery system

Accounting services provided by Bloomingdale resident:
James A. Laughlin, CPA-919 Oakfield Drive Suite 201-
Brandon, Florida 33511-651-1746

MEETINGS

All meetings take place at the Bloomingdale Community Office. These are monthly public meetings and all Bloomingdale residents are invited.

Bloomingdale Special Taxing District
Second Monday of the month at 7:30 p.m.
BHA Board of Directors
Second Tuesday of the month at 7:30 p.m.
Bloomingdale Oaks Special Taxing District
First Thursday of the month at 7:00 p.m.
Mobile Watch & Neighborhood Watch
Watch this listing for dates & times. The meetings are held on a per need basis.

Tax Cap And Government Efficiency

by Buddy Johnson
State Representative

One of the greatest concerns of Florida's taxpayers is runaway government spending. I introduced House Bill 1785 to accomplish the goal of restraining unbridled governmental spending.

I, along with other Republicans in the House and Senate, led the fight for caps on government spending. If Florida's families are required to live within their means (or go broke!), then our state government should be held to at least the same standard.

Our state budget has grown from \$11.0 billion in 1983-84, to more



Johnson

than \$35 billion in 1993-94. The budget has grown more in the last 10 years than it did from 1983 all the way back to the day Florida first became a state.

The Republican proposal linked to HB 1785 linked growth of the state's budget to the growth of our citizens' personal income. Only if the average person in the state saw his or her

income increase could the state's budget grow.

Though it survived until the session's final hours, the tax cap was politically sidetracked and died with the end of the session. However, this issue is still very much alive and will be addressed again next session, if not by the taxpayers of Florida in a petition drive this summer or fall. Also, many political candidates hopefully will use this issue as the focal point of their campaigns in 1994. Keep the pressure on!

State Rep. Johnson will be the guest of the Bloomingdale Homeowner's Association on Tuesday, Nov. 9.

Parks from page 1

residents, but programs could include a variety of daytime classes and evening adult and children's athletic leagues. A summer recreation camp and teen activities would also take place at the center, according to Kessler.

Jackson stated that consultants are "on hold"

to begin the project. "This is the first area we want to contract for," he said, pointing to the 1988 request of the Bloomingdale residents.

He and Kessler will present floorplans and site plans at the next BHA meeting, and he said that construction could begin by next October with a

six-month completion time.

At the time the referendum passed, 65 projects were defined by the county including acquisition of new sites for county parks and upgrading existing parks. The BHA deeded Parks East and West to the county in 1986.

Mobile Watch Report

by LaWayne Wyatt

After a relatively quiet summer, the number of incidents reported in our community has increased. A total of 23 events were recorded in September. These included a damaged mailbox, a possible theft, at least three car break-ins, a stolen car, cars parked at the golf course and Alafia School, activity at The Spot, numerous cars in the parks after closing, and several reports of suspicious activity.

There were also reports of several teens roaming Park East and looking into windows and a group of teens roaming Natures Way followed by an egging on Peachfield Drive. Additionally, there was a large teen party in Oakcrest which resulted in three deputies being called to the scene.

Ten events were reported in October through the 13th. These included two car break-ins, cars in the parks after closing, speeding and two suspicious motorists.

Three new problem areas have also

developed in the last two months. Teen parties have been reported on a dead-end street in River Crossings, teen drinking parties were reported in a cul-de-sac in The Greens, and a vacant house on Bell Grande Drive has reportedly been used for teen parties. We plan to keep an eye on all three sites but residents in the area should also be observant and report activity to both the Sheriff and Mobile Watch.

Mobile Watch has had several new volunteers join its forces during the past several months, but it can always use more in order to maintain a safe community. Our thanks to the following who recently volunteered:

Erin Arbor residents Tucker and Christine Hill, Ron Colligan, and Walter Santiago; East residents Tim and Linda Cole and Don Brotherton; Brendon Duffy of West; and Terry and Debbie Hunt of River Crossings.

BHA Seeks Board Nominees

Residents who are interested in serving on the Bloomingdale Homeowner's board of directors are asked to submit their name this month. Prospective nominees are asked to call the Community Office at 681-2051, BHA president Randy Wolfe at 684-0079, or Rick Oros at 685-0866. The current board is looking for residents who are interested in working to improve the quality of life in the Bloomingdale East and West communities. Board members are responsible for attending one evening meeting a month.

Correction

In last month's article on water corrosion, hydrogen sulfide was incorrectly identified as hydrogen chloride. The rotten-egg odor of well water is caused by hydrogen sulfide.

Smiling Faces: Meet Anne Castagliola

What's age got to do with feeling young? Not much. Take that from Anne Castagliola, familiar to many in Bloomingdale as the most frequently seen face in the McDonald's lobby at lunchtime. As teenage part-time employees come and go, Anne at 73, has been around this McDonald's for three years. And she doesn't believe in retirement.

Besides keeping straw and napkin holders full and returning trays to the service counter, Anne loves to mingle with the lunch crowd, particularly the young children.

"This is the best job I could have because it allows me to be around people and to travel for (weeks) at a time when I want to," she said. When she's not working, Anne, the world traveler, has been to China, Alaska, South America, and three times to Europe.

Anne believes that the secret to feeling young is an active life, so she also tutors reading at Alafia Elementary School, and she is a hospital volunteer in Brandon. For a little recreation, she roller skates.



Anne makes sure the lunch crowd is taken care of.

"My daughter didn't want me to do that," she said. "She was afraid I would break something." After breaking a wrist, however, Anne is undaunted and back on wheels.

It wasn't always so for the daughter of Italian immigrants. Growing up in Brooklyn and living most of her adult life on Long Island, Anne and her late husband raised four children.

Always feeling it was important to be home with her family, Anne didn't begin working until she was in her forties, and even then, she taught school so she could have the same hours as her children.

But when her husband became ill, they moved to Florida. For eight years, she has been on her own and decided she needed to fill those empty days with plenty of activity.

"Working gets me out of the house. When you're by yourself, you don't want to sit around. I'm lucky that McDonald's will hire an older woman."

Looking at Anne, make-up perfectly in place and a smile that stretches across her face, certainly she wasn't referring to herself.

Rec Center Would Provide Lasting Legacy

It's not always true that everything you need to know about life you learn in kindergarten. Kids learn from their peers, from their parents, from undesirable characters on MTV, but mostly from experiences throughout life.

When I was growing up, I learned valuable lessons at our neighborhood rec center in Tampa. It was a great place with softball fields, basketball courts, swings, four-square and hopscotch painted right on the sidewalks, which took neither a parent committee nor an act of congress to approve, and room to run around. It was close enough (within a mile) to walk or ride my bike every long day of summer and even after school.

There was a park director, whose job we figured at the time was to make sure everyone stayed safe. He didn't interfere in squabbles, or try to make us play something he thought was "organized activity". We just played and learned.

I learned good sportsmanship (if you draw straws for rope jumping order, you better not give anyone cuts in line).

I learned fair play (it's easier to see-saw if both people are about the same size).

I learned how to share (the one and

only tetherball is not your sole property).

I learned how to be kind to animals (the baby bird we found on the ground became our mission of mercy. It lived and flew away one day).

I learned cooperation and how to settle disputes without tattling.

I learned how to twirl a baton and how to make a key chain. I'm sure the clay ashtray I made one summer is still collecting paper clips on someone's desk.

I learned about taking pride in the upkeep of an area you fiercely protect when the threat of losing it is apparent.

I made lifelong friends and our dreams for the future were born there.

My mother, a single parent, didn't shuttle me to Scout meetings, dance classes, music lessons, or play groups. I made my own fun, and it didn't involve sitting in front of the television because houses were not air conditioned then, and it was often cooler outside.

Children back then didn't have to have

fabricated activity. A kickball game in the middle of the street was entertainment for the entire afternoon. And parents didn't get involved.

It's a shame there aren't more neighborhood rec centers in the county. Places where kids can go to be themselves and learn important things on their own without being force-fed.

This community has a once-in-a-lifetime opportunity to present its children with just such a place. County bond money is now available and the decision-makers want to give us a fully-staffed community

recreation center. The best and only location is in Park West.

A rec center would provide children and adults a place to, well, recreate. The county has promised as part of the package a community meeting room, more playground equipment, personnel to staff and maintain the center, ongoing classes from arts and crafts to karate and athletic leagues from T-ball to adult volleyball. Wouldn't Friday teen nights be more acceptable than

giving the kids 20 bucks and sending them off to Regency Square or to McDonald's to hang out?

We owe it to our children and to those families who will live here in years to come to take a step toward improving the quality of life in our community. There are those residents who think the funds could be put to better, perhaps selfish, use. Get real, folks! Let's not kick the proverbial gift horse in the mouth, here.

Aside from the organized activity we can't seem to get away from, wouldn't it be nice to offer our kids a safe place to play - a place where they can maybe make a lifetime buddy, and if they're lucky, learn a few lessons along the way?

This month's Good Guy Award goes to Bob Stalker and the STD trustees for the recent tree-planting project. I drove through Twelve-Oaks subdivision in Town N Country the other day. When I lived there in the early 80s, their STD lined the streets with young oaks which have now formed a lovely canopy over the area.

Our Times

by Rozel Sciuilli

**SOLD 195
Resales in
Bloomingdale!!!**

Call your
Bloomingdale
Specialist
"Donna Mac"



**Donna Mac Giffert
654-7070**

Sun Cove
SUN COVE REALTY, INC.

**In Bloomingdale Square
• CONVENIENT AND CLOSE TO YOU!**



734 Isleton
Bloomingdale West

SOLD in the \$80's!!!

With Donna Mac it's **SOLD! SOLD! SOLD!** Another fine home in Bloomingdale West has sold. Call your Bloomingdale specialist to get your house **SOLD!** Call 654-7070 for fast results!

Scientist: Drinking Water Poses No Threat To Health

Second in a series.

by Rozel Sculli

Last month the GAZETTE reported that failed plumbing in Bloomingdale homes could be caused by any one of or a combination of factors - the corrosive nature of water, failed copper piping, and lightning.

Of the three, the natural corrosivity of water prompted one resident to ask "if it's doing that to our pipes, what's it doing to our bodies?"

By its very nature, water is corrosive. Hillsborough County pumps its water from deep wells. This water contains hydrogen sulfide - that rotten egg odor of well water. To remove that odor and to clear the water of bacteria, the county uses chlorine as the most acceptable and widely used disinfectant, according to water scientist Brian Page.

While the county uses chlorine to disinfect the water supply, Page pointed out that some studies suggest that chlorine in drinking water has been linked to certain diseases or illness.

"The whole idea of disinfection has caused a struggle," he said. "It is necessary to effectively disinfect water so pathogenic organisms will be destroyed. Chlorine is the most effective way."

He added that a person would have to drink in excess of two gallons of water a day to suffer any ill effects which could include nausea, or gastrointestinal irritation in extreme cases.

The level of chlorine in Hillsborough County water does not exceed 1.3 mg. per liter, according to Page.

Water also naturally contains calcium, magnesium, and sodium, all minerals that are used by humans, and which exist at levels that are not hazardous to humans.

For example, according to Page, the maximum contaminant standard for sodium as set by the EPA is 160 mg. per liter. He pointed out that one liter of county water contains eight to 12 mg. of sodium.

Page added that sodium intake is a concern to individuals predisposed to hypertension, and that calcium intake should be monitored by persons who suffer from kidney or bladder stones.

"The calcium and magnesium present in drinking water are not as bio-available to the body as those that exist in vitamins," said Page. "The body can use these minerals to a degree, but the body puts vitamins to better use."

He cautioned that persons who drink demineralized water are doing their bodies a disservice. "Demineralized water is hungry water," said Page. "This water is lacking vital elements and will deplete the body of essential minerals."

Another element found in Hillsborough County water is copper. It does not occur naturally, but rather as a result of corrosion of the copper pipes within homes.

The Federal Lead and Copper Rule recently required the county to test samples of water in their service area. There were no measurable levels of lead, but copper was measured in the first draw of water after prolonged non-use, which meant that corroding copper piping within homes had infiltrated the water.

The county plans to counteract this problem by injecting an inhibitor into the water supply that will adhere to the inside of the copper piping.

Page explained that the inhibitor used will be a weak phosphoric acid, "not even enough to change the ph of the

water," he said, adding that people get more phosphoric acid in a soft drink than they will get from water. He pointed it to the popular soda fountain drink of the late 1800's known as a phosphate, and emphasized that it is the carbonic acid in soft drinks that causes corrosion not phosphoric acid!

"Water's only contact with copper is in the home," said Page, explaining that water travels through PVC or ductal iron outside the home. He suggested that residents let water run for at least 30 seconds after a prolonged period of non-use such as overnight or after a vacation.

The GAZETTE was flooded with phone calls from area residents following its first article about the possible causes of failed plumbing. There was no one common denominator such as street or builder. And while some homeowners agreed with one or more of the corrosion theories, all of them have been told by plumbers that thin-walled, "cheap" copper was to blame. None of the homeowners has had success in getting insurance companies to re-pipe their homes with PVC, although one homeowner took on the project himself. Builders whose homes have had more than one episode of failed plumbing include Suarez, Pulte, Ryland, Ryan, and Bennett Homes. The GAZETTE continues to invite resident response to this important topic.

Bloomington Residents React To Speed Bumps

by Dale Murray

Bloomington Drive still has traffic as the main thoroughfare in West, but it moves much slower now.

Mixed reactions from the community have surfaced since the speed bumps were installed on Bloomington two months ago. But, for the most part, homeowners along the busy street are happy with the results.

According to Phillip Edwards, they are doing what they were intended to do "slow down and reduce traffic." He added, however, "it is disappointing that some drivers treat them like they're not there."

Rafael Morales would agree. He feels the speed bumps still need to be higher.

Lois Morse finds that traffic is being slowed, but she added that she is not fond of them.

Bayfield residents to the south also are not fond of the speed bumps, because motorists are now detouring down their street in order to avoid the rough ride on Bloomington.

Chris Curran, a Bayfield resident, said that what used to be Bloomington's problem is now Bayfield's.

"The teenagers use Bayfield as a raceway," he said. "The speed of the traffic has picked up and there have been a few near mishaps."

Curran cited mid-afternoon hours when school buses are dropping off young children as the most dangerous time.

In a recent survey conducted by the GAZETTE, 92% of the residents on Bloomington felt that the bumps were a good deterrent to speeding drivers.

Drivers, however, felt that the bumps are impossible to maneuver at a speed in excess of 10 to 15 mph., far less than the posted speed limit of 25 mph.

The GAZETTE office has received calls from angry residents and even a few visits from drivers who have

brought their vehicles to the office to point out the damage caused by driving over the speed bumps even at a slow pace.

The county road engineers specify that a speed bump should be no more than four inches at its crest with a gradual incline and decline. On close inspection of the bumps on Bloomington, the obstacles are clearly a boxed shape and vary greatly in height, leading one resident to complain that the bumps were poorly designed.

After two years of work on Bloomington Dr., it appears that the county's work is still not complete, as the speed bumps may be redesigned.

The BHA and GAZETTE welcome comments into the community office. Residents with concerns may call 681-2051 with questions and comments.

Can the drinking water in your home be made SAFE...AND POLLUTANT FREE??

The answer is YES!!!

If you would like to know what filtering and reverse osmosis can do for the quality of the water you drink.....

Please call
Water Technologies of Tampa

(813) 671-4518
and ask for David Blake
10509 Symmes Rd., Ste. 11
Riverview, FL 33569

Is Your House Sick?

"Indoor Air Quality Is Our Concern"

Electrostatic Air Filters
Air Purifiers
Dehumidifiers
...and Many Other Products
to Help Relieve Your Allergies

Allergy Relief Stores, Inc. Of Florida
10047 Adamo Drive • Tampa, Florida 33619

813-653-2232

New To Area
Brandon Classic Karate

Trial Program Only
\$15

Uniform and three **FREE** lessons

- > Self Defense
- > Character Building

Call 684-7805
In the Royal Oaks Shopping Center
3232 Lithia Pinecrest Rd.

Why do smart kids fail?

Your child may be smarter than his or her grades show. Our certified teachers help children of all ages overcome frustration and failure, and realize their potential.

A few hours a week can help your child improve weak study skills and gain the Educational Edge.

Our teachers pinpoint problems and set tutoring in reading, phonics, study skills, math and SAT prep to help students in all grades do better in school. Call and let us help your child break the Failure Chain.

4 Reasons for failure

- weak basic skills
- frustrated with school
- lack of confidence
- no motivation

THE HUNTINGTON LEARNING CENTER
902-A Lithia Pinecrest Rd.
681-3385

NEED A PHYSICIAN CARE WALK-IN CLINIC DOCTOR?

6027 Yonkersburg Dr., Brandon

JERRY A. WISHK, M.D. (Board Certified Internal Medicine)
Mon 9-7 Tue-Thu 9-6 Fri 9-5 Sat 9-4
Call for details **684-1777**

WELCOME TO OUR PRACTICE SPECIALS!

- SCHOOL SPORTS PHYSICALS \$17** with visit, fee.
- COMPLETE PHYSICALS \$139** with visit, fee. Includes: 12-lead ECG, X-ray of chest, abdomen, pelvic, prostate, thyroid, testicles, and rectum.
- SAVE OFF YOUR NEXT VISIT \$10** with visit, fee.
- FLO SHOTS 1993-94 VACCINE \$9** with visit, fee.

FAMILY PRACTICE and INTERNAL MEDICINE

* Not valid for special promotions or insurance. Ad expires 1/31/94.
** one patient per coupon.
*** High school students and under only. See conditions.
**** Insurance bill accepted for the appropriate exam & procedure.

Board Member Wants BHA To 'Adopt' Pond

by Rozel Sculli

There's an island out in the pond on Bell Shoals just south of Bloomingdale. The ducks know it's there. The residents in Bloomingdale West whose docks jut into the pond know it's there. Children who fish on the banks of the pond see the little island and imagine ways to reach it.

But motorists on Bell Shoals have no idea it exists because of the overgrowth of plant life that hides it.

Rick Oros, secretary of the Bloomingdale Homeowners Association, would like to change that. Through the Hillsborough County Adopt-A-Pond Program, the BHA will be able to clean-up and maintain the pond.

"We want to make it an attractive area where residents can sit on benches and feed the ducks, maybe build a foot bridge to the island," said Oros, who recognized that both children and adults enjoy the setting.

"It's a shame that the tall weeds hide what could be a very nice looking area of our community.

"The BHA strives to improve the quality of life here, and this is one way we can do something for the community that will enhance the area and also provide enjoyment and leisure for our residents."

One obstacle that doesn't seem to deter Oros is the fact that the property is a wetland area governed and safeguarded

by the strict rules of the county's Environmental Protection Commission. But through the Adopt-A-Pond program, Oros can meet with county officials who can let him and the



By adopting the duck pond on Bell Shoals and Rosemeade, BHA member Rick Oros hopes to create a park setting for residents to enjoy.

BHA know which species of plantlife can be safely removed from the pond and replaced with more desirable plantlife.

According to Tommy Denton, county engineer and Adopt-A-Pond spokesman, he and an environmental scientist would meet with the "adoptive" group to determine which plants should be removed. Then it would either be up to the BHA or the county road department to remove those plants.


The county would then provide a variety of "desirable" plants for the BHA to place along the water's edge and the pond would be theirs to maintain for life.

Denton said the only problem is the backlog this fledgling program already has. "This is a brand new program and we already have a waiting list of 30 ponds," he said. He projected that he would not be able to meet with the BHA for at least a year.

Oros said he would like to know more specifically what can and can't be done to the pond area, and hopes to work through the EPC to speed the process along.

The park area surrounding the pond is currently maintained by the Bloomingdale Special Taxing District, which keeps the grass mowed but does not maintain the pond or control the aquatic plantlife.

Residents who live on the west and north banks of the pond may continue to maintain their property which extends out to the middle of the pond.



by
Sonia M. Ruiz, M.D.

Pediatrician

Featuring the finest medical care for:

- Infants
- Children
- Adolescents

Most health plans accepted.

684-1881

4316 Bell Shoals Road
Village Center

STD Finds New Leadership

Bloomingdale newcomer Rick Pitrowski took the helm as president of the Special Taxing District's Board of Trustees at last month's meeting. Pitrowski, a six-month resident of the community, said that his goal is to beautify Bloomingdale.

"I want other communities to look at Bloomingdale and say 'look what they did,'" said Pitrowski, who has been driving around Brandon to see what other communi-

ties have done to make their areas attractive.

The STD trustees oversee a budget in excess of \$300,000 and with it, maintain the common areas of Bloomingdale East and West. They are responsible for the upkeep of landscaping, entrances, and walls.

Homeowners pay \$80 in taxes annually, and Pitrowski says he does not foresee an increase since there is still plenty of growth in Bloomingdale.

The recent tree-planting and irrigation project is not yet completed, according to Pitrowski, who said that the STD plans to add palms at entrances and additional oak trees in areas once irrigation systems are in place.

Pitrowski hopes that the STD can work with the Bloomingdale Homeowner's Association to beautify all of Bloomingdale.

"If we (the STD) take care of the areas outside the walls, we would like the BHA to actively pursue enforcement of deed restrictions inside the walls."

Pitrowski took an active role in the community when he and other residents formed the Bloomingdale Homeowners for Quality Living in an effort to work with property owners of two tracts of land up for re-zoning. When STD positions became vacant in the summer, Pitrowski ran unopposed for one of three vacancies.

Outgoing president Tom Brophy remains on the board of trustees as vice president, as does longtime treasurer, Joe Liguori. Other trustees are Sue Haddon, John Gunn, Ron Mabe and Susan Boucher. Bob Stalker is the board's administrator and oversees the day-to-day operation of the STD. Board members hold their positions for three years, with two seats up for re-election each year.



Brandon Veterinary Hospital

**Experience Counts
With the Pet You Love**

Harry D. Vildibill, D.V.M. Full Service Hospital
34 years in Brandon Boarding

3301 John Moore Road
Just North of Bloomingdale Ave.

689-4801
689-4800

The
Sign
of the
Times




Frank & Rebecca St. Pierre



LOFTY SERVICE DEVILISH DETERMINATION

COLDWELL
BANKER

Expect the best.®

SOLD

685-6510

Brandon Office
777 W. Lumsden Rd.
Brandon, Fl 33511

To advertise in Classifieds or
Residents Who Are call
681-2051.

AMORE PIZZA

NOW OPEN!

COUPON

BUY 1 LARGE PIZZA
& GET THE SECOND
1/2 PRICE.

COUPON

BUY 1 DINNER
& GET THE SECOND
1/2 PRICE.

COUPON

YOUTH TEAM SPECIAL
FREE PITCHER OF SODA
W/EVERY LARGE PIZZA

NOT GOOD W/ANY OTHER OFFER. GOOD THRU 12/93.

133 E. BLOOMINGDALE AVE.
Corner of John Moore & Bloomingdale Ave.

684-0402

Area Churches

St. Marks Celebrates 10th Anniversary

by Erin Mule'

Ten years ago the members of St. Marks United Church of Christ carried their items of worship and walked in a procession from Center Place to their current location on Lithia Pinecrest Road. Each year, according to pastor Garry Shoerer, his congregation celebrates with St. Marks Day in honor of that "exodus" in 1983.

Members will add to this commemorative year with its annual Pilgrim Celebration on Nov. 20. Men and women will don traditional pilgrim costumes and turn the church grounds into a village complete with a pilgrim home and traditional refreshments. A slide presentation will be on-going throughout the day to explain the celebration.

A craft show will be held from 9 a.m. to 3 p.m. displaying the works of local artisans. Interested crafters may contact the church by Nov. 8 to reserve space.

The celebration will conclude on Sunday, Nov. 21, with a traditional Pilgrim church service, men and women seated separately.

All events are open to the public.

Living Christmas Trees Return To Bell Shoals

The members of Bell Shoals Baptist Church will once again thrill local residents and hundreds of visitors to the area with their annual presentation of "The Living Christmas Trees" on Dec. 10 through 13 at the church. Performances will be given at 7 p.m., and there will be two matinees at 3 p.m. on Dec. 11 and 12. Tickets are \$6 and are available by mail or by calling 653-3875.

Over 170 voices will create two trees and will be lifted in song by Bell Shoals music director Loren Hancock. The presentation is both musical and dramatic. The first act of the drama was written by Kim Coker and the second act was written

by Leslie Hancock and will be presented by children and adult members of the church.

Mr. Hancock is in his second year as music director and this will be the eighth performance of "The Living Christmas Trees."

Local Churches Prepare For Holidays
Immanuel Lutheran and St. Marks United Church of Christ will both hold Thanksgiving Eve services at 7:30 p.m. on Nov. 24. St. Marks will also have its Hanging of the Greens to decorate the sanctuary for Christmas at 2 p.m. on Nov. 28.

A children's musical entitled "Good Kings Come in Small Packages" will be presented at St. Andrews United Methodist Church at 7:30 on Nov. 21.

The youth of St. Stephens Catholic Church will attend the National Youth Convention in Philadelphia on Nov. 11 through 14. The teens have had successful fund raising drives to help pay for their trip and wish to thank the community for its support.

Assistance For Haitian Children

Members of the Presbyterian Church of Bloomingdale 49ers (plus) group assembled 56 packets of life-saving oral rehydration formula which is on its way by air to Haiti. Infants and small children who become dehydrated are saved from death by this simple formula.

An energetic group of older adults with no relation to the professional football team, the 49ers (plus) group invites seniors in the community to share in an opportunity for friendship, fellowship and creative fun. Their next get-together is on Nov. 10 when they will car-pool to a meeting of Keen-agers at the First Presbyterian Church of Dade City. Lunch will be served for \$1. For further information, please call the church at 654-3699.

Herbally Speaking Are Herbs Dangerous?

by Cathy Mitchell

You may have tuned in to the recent negative publicity on alternative healing, herbs and food supplements. Many people become deathly afraid of taking an herb after reading some dire warning about it and yet these same people are not afraid to eat sugar and junk foods, drink alcohol and caffeinated beverages, and to take medications prescribed by their doctor, all of which could be potentially more dangerous than most herbs.

All the recent "hype" on dangers of herbs appears to be due to the fact the FDA is proposing new rules to tighten restrictions on the herb and supplement market. The FDA has been faced with a great deal of opposition from consumers of these products who do not want to see some of their favorite supplements taken off the market. We all need to support S.B. 784 - the Dietary Supple-

ment Health and Education Act of 1993, to prevent the FDA from further heavy-handed regulation of herbs, vitamins, etc. This bill is our protection against the proposed FDA regulations which are supposed to take effect in December of this year.

So whether you are in favor of food supplements or you may have no intention of ever taking herbs or vitamins, we all need to call and/or write our government officials and make our voice count in support of S.B. 784 because what is at stake here is our right to choice.

A special edition 28-page booklet entitled "Are Herbs Dangerous" is available locally at the Medicine Chest.

Editorial comments do not reflect the opinion of The Bloomingdale Gazette or the Bloomingdale Homeowner's Association.



TEACHERS' HELPER, INC.

Parent-Teacher Store

Your
ONLY
local
outlet
for...



We carry a complete line of products

from **TREND** Enterprises Inc.

for home and school

Construction paper
Tempera paint
Science project materials
Classroom supplies
Supplementary materials
Math manipulatives
Science kits
Preschool activities idea books

Summer workbooks
Bulletin board supplies
Beginning readers
Seasonal idea books
Raffi tapes & records
Christian learning materials
VBS supplies

684-0688

109 S. Margaret Street

Brandon, Florida 33511

Next to Scoggins south of SR 60

WINDOW AND FASHIONS DECOR

SERVING THE BAY AREA FOR 9 YEARS

"Put The Finishing Touch
In Your Home For The Holidays"

Bloomingdale

3248 Lithia - Pinecrest Road
684-5000Royal Oaks Shopping Center
Lithia Rd. at Bloomingdale Ave.
Mon.-Fri. 10-5:30 Sat. 10-3

Brandon

10125 Adamo Dr., Tampa
623-6500Brandon Crossings
Adjacent to Home Depot
Mon.-Fri. 9-5:30 Sat 10-5
Fax 621-9600

Sun City Center

102 South Pebble Beach Blvd.
633-3118Mon.-Fri. 9-4
Closed Noon to 1 pm

SAVE 10% ON ANY
INSTALLATION, IN
ADDITION TO OUR
EVERYDAY LOW
PRICES.

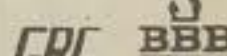
Bloomingdale Store Only
Exp. thru 11/30/93

We Manufacture
Vertical Blinds,
Cornices, Lambrequins
and
Upholster Furniture



Toll Free

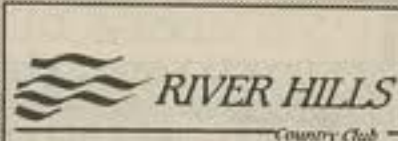
1-800-201-8880



COMPLETE INTERIOR DECORATING SERVICE



Located only minutes from your front door,
Arvida's River Hills Country Club offers
Full, Tennis, Social and Corporate Membership
opportunities with values far surpassing
others in the area.



653-1554

"Serving you exceptionally is our purpose"

We are dedicated to becoming the country club standard by which others judge themselves. You can enjoy these amenities for a lot less than you expect!

NEW MEMBER
DISCOUNT PROGRAM
50% OFF
INITIATION FEES!
LIMITED OFFER

Kid's Talk

Polio Vaccine Topic Of Debate

by Sonia Ruiz, M.D.

Dear Dr. Ruiz:

The controversy between the oral polio vaccine and the injectible form of the vaccine has been in the news recently. Which one is better for my child? What are the risks involved?

Sincerely,
Worried Mom

Dear Mom:

Polio virus is an enterovirus. Infections occur only in humans and it is spread by fecal and oral routes, and possible oral-oral (respiratory) routes. Infections occur at an early age under conditions of poor hygiene. The last outbreak of polio in the United States occurred in 1979 in a group of people who had declined immunization. Since then almost all cases have been vaccine connected at a rate

of nine cases per year. The risk of getting polio from a vaccine is one in 7.8 million doses.

The greatest risk of paralysis occurs with the first dose of OPV (oral polio vaccine), and is highest when an immuno compromised person receives the vaccine. Recipients of the oral polio vaccine have the virus present in the throat for one to two weeks; it is excreted in the feces for one to two months after the vaccine. Immunodeficient persons may excrete the virus for prolonged periods. The timing of the paralysis has been seen anywhere from seven to 21 days past exposure.

There are two types of vaccines currently for polio: the oral one and the injectible one (IPV).

Based on consideration of risks vs. benefits, OPV is currently the vaccine of choice in the U.S. OPV is considered better than IPV because it protects the gastrointestinal tract through absorption.

Persons for whom OPV is indicated are as follows:

1. Normal infants and children receiving routine immunization
2. Immunized or partially immunized children who are at imminent risk of exposure to polio virus.
3. Adults at future risk of exposure to poliomyelitis who had received one or more doses of IPV or OPV.
4. Adults at imminent (within four weeks) risk of exposure to poliomyelitis who have had partial or complete series of IPV.

Persons for whom IPV is indicated are as follows:

1. Persons with compromised immunity who are immunized or partially immunized.
2. Symptomatic and asymptomatic persons known to

be infected with HIV virus

3. Household contacts of an immunodeficient individual including those known to be HIV infected.

4. Partially immunized or unimmunized adults in household (or other close contact of children) to be given OPV, provided that the immunization of the child can be assured.

5. Unimmunized adults at future risk of exposure to poliomyelitis.

6. Adults at future risk of exposure to poliomyelitis who have been partially immunized with IPV or OPV

7. Adults at future risk of exposure to poliomyelitis who have had a primary series of IPV

8. Individuals refusing OPV immunization

9. Patients with immunodeficiency diseases such as AIDS, combined immunodeficiency, hypogammaglobulinemia and agammaglobulinemia, as well as persons with leukemia, lymphoma, any cancer or steroid therapy should NOT receive the OPV because of the risk of paralytic disease.

10. Any patient receiving pharmacological doses of steroids. Avoid IPV if the patient is allergic to streptomycin or neomycin.

In summary, both IPV and OPV prevent polio. OPV protects the gastrointestinal tract better, but there is a small risk to others around immunized child if good handwashing technique is not used or if anyone with cancer or any immunodeficiency should be exposed. If you scrub your hands vigorously for 30 seconds after cleaning your child's diaper area and you avoid using counter space where food may be placed, you reduce exposure dramatically.

Please discuss your questions with your physician regarding this subject.

Starting January 1994
The Bloomingdale Gazette

will offer
FREE
classified ads to
BHA members

Call 681-2051 for details.


**If you want your home sold,
you can call any Realtor.**

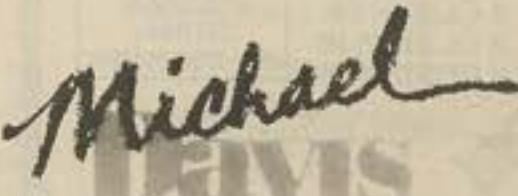
**IF YOU WANT YOUR HOME
SOLD FAST,**

Call
**MICHAEL
DAVIS**
684-0016

BLOOMINGDALE
1407 Peachfield/only 23 Days
507 Sandy Creek/only 50 Days
535 Sandy Creek/76 Days

BUCKHORN
2717 Falling Leaves/36 Days
2755 Buckhorn Oaks/63 Days
437 Summit Chase/99 Days







684-0016

Hard work never goes out of style

RE/MAX REALTY UNLIMITED
2020 West Brandon Boulevard, Suite 105
Brandon, Florida 33511



Ask Your Vet



Dear Dr. Vildibill,
My name is Ugly. Yes, my owner named me that because I have lost hair on my hind legs and back and I itch and scratch so much that now I have ugly sores. My owner thinks it's my fleas, but all he does is bathe me in flea soap. This kills the ones that are on me at the time, but it doesn't have any residual effect.
I was talking to my next door neighbor's dog who has a beautiful hair coat and doesn't itch at all. She says her owner uses some drops on her back every 15 days, sprays her yard every month, and sprays her house every six months. All these things she gets from her veterinarian and that keeps her FLEA FREE!

Yes, I wish I were pretty and didn't itch.
Sincerely,
Ugly

Dear Ugly,
Your neighbor is right. There are many different flea "control" products on the market, but it is important to remember that all areas of possible flea infestation need to be treated. While sprays and powders may give temporary relief, a consistent treatment plan - one that takes care of you, your yard, and your owner's house - is the most effective means of dealing with fleas. Your coat can look beautiful again. Take your neighbor's advice and see your vet about a complete flea treatment program.

Please send your pet questions to Ask Your Vet, The Bloomingdale Gazette, 3232 Lithia Pinecrest Road, Suite 101, Valrico 33594.

NOTARY

**Mail Boxes Etc.® is
The Post Office
Alternative®**

You can trust the experts at MBE to handle your postal, business or communications needs.

 COPIES	 SHIPPING	 STAMPS
 PACKAGING	 OVERNIGHT	 OFFICE SUPPLIES
 MAIL SERVICE	 FAX	 PACKING SUPPLIES

EMBE MAIL BOXES ETC.®
LET'S NOT WORRY WE DO LET'S DO IT WE DO IT!

New Hours
8-7 M-F
9-5 SAT

UPS Authorized Shipping Outlet

Bloomingdale Square
813 E. Bloomingdale Ave.
(Wal-Mart Shopping Ctr.)
689-4998
fax 689-4328

WESTERN UNION TRANSFER
The fastest way to send money®

Gift Ideas

Gift Ideas

Gift Ideas

FROM THE HEART



THE INDOOR YEAR ROUND CRAFT/GIFT STORE

Hand made crafts & gifts for special and everyday occasions. See us for all your holiday needs.

Royal Oaks of Bloomingdale
3220 Lithia Pinecrest Rd.

651-9395

Mon.-Wed. 10-5
Thurs.-Fri. 10-6
Sat. 10-5

Universal Jewelers

The Sosa family has been offering Brandon area residents the finest in 14 and 18Kt gold jewelry for the past seven years at Universal Jewelers. Their unique selection of custom jewelry comes from the United States and Europe, and features a superb quality of diamonds and gemstone pieces.

Universal's craftsmen will custom design settings for loose stones, or create beautiful one-of-a-kind pieces of jewelry. They are also the only store in the area to carry the exceptional Swiss watches by Rado, the precision time pieces that were found in Europe by the store's owner.

Popular items such as name plates and bracelets can be special ordered for the holidays. A wide selection of unique charms and earrings are displayed or can be special ordered. Universal also offers expert jewelry and watch repair.

Visit Universal Jewelers for that exquisite gift for someone special. They are located at 928 W. Brandon Blvd. just west of Kings Avenue. Store hours are 10 to 6 Monday through Friday, and 10 to 5 on Saturday.

From The Heart

Discover a special world of unique gifts and crafts at From The Heart. Owners Cathy and George Guerrette take pride in their store's wide variety of arts and crafts - in fact, it's an arts festival everyday at From The Heart. Why wait for festivals to come around on the weekends when the same displays are available daily at From The Heart?

The store, which is located in the Winn Dixie plaza on Lithia Pinecrest and Bloomingdale, features over 50 crafters with wide-ranging talents. Cathy will take special orders for her customers and lay-a-aways are available for the holidays.

Whether it's made of porcelain or ceramic, silk, wood, or cloth, you will find those special gifts for giving or that special something you've wanted for yourself at From The Heart. Stop in and see their festive holiday displays on Monday through Saturday from 10 a.m. until closing, 8 p.m. on Thursday and Friday, and 5 p.m. all other days. You won't leave empty-handed. (Crafters are welcomed to display their work)



Soccer Field Inc.

Pass, dribble, shoot at that time of the year again season just around the corner. Soccer Field Inc., located at 526 Oakfield Dr. in Brandon, is the place to go for all your soccer needs.

Shoes, socks, shinguards, carry hard to locate items. Shinguards to size 3 soccer shoes, and more. We look forward to sharing our knowledge and service with you.



Patches & Lace

Located at 167 East Bloomingdale (Bloomingdale and John Moore) in Brandon, Patches & Lace offers collectibles, handcrafted gifts and decorative accessories in addition to being a Christmas Shoppe.

The shop features many collectibles including Dickens' Villages and the North Pole series from Dept. 56, Snowbabies, and David Winter Cottages.

Patches & Lace specializes in unusual holiday merchandise. Angel and Santa collectors will be delighted with the selection. The seven decorated Christmas trees offer a selection of ornaments that range from a nature theme to exquisite Battenburg ornaments.

Established in 1982, Patches & Lace has been serving customers for more than 11 years. The shop is open Monday through Friday from 10 a.m. until 6 p.m. and on Saturday from 10 a.m. until 4 p.m. Special extended hours during the holiday season will be offered. Layaway is available.

For more information, call Patches & Lace at 685-8498.



SOCCER FIELD INC.

YOUR #1 SOCCER STORE

EVERYTHING SOCCER
AT COMPETITIVE PRICES

COMPLETE TEAM OUTFITTERS



Brandon
526 Oakfield Dr.
Brandon, FL 33511

(813) 654-GOAL

Store Hours:
10:30-5:30 Mon. thru Sat.

Tampa

268 E. Fowler Ave.
Tampa, FL 33612

(813) 977-GOAL

Store Hours:
10:00-6:30 Mon. thru Sat.



all-golf gifts!

Here are a few suggestions for Christmas gift giving that are sure to bring a smile to any golfer:

Single & boxed Christmas cards, \$1.50 - 10.50. Stocking Stuffers: tee pens, golf ball soap, jewelry, socks, boxers, neckties, yoyos, clocks, and more - from \$1.50. Christmas ornaments and lights, and 'golfing santas' - from \$4.

Have the kids color a golf poster for mom, dad, or grandparents to show off. Comes w/ colored pencils, for \$12.95 and 15.95.

For friends, bosses, or gift exchanges: desk sets, collectibles, stationary, board games, puzzles, photo albums, picture frames, calculators, recipe books, humorous gifts, and more - from \$5.

Everyone "chip in" for something really special: a pewter/antique brass/marble collector's chess set w/pieces that authentically represent gold attire from the turn-of-the-century, \$535. Or "The Byron Nelson Story", hard-covered, signed & numbered, personally autographed by Byron Nelson, \$149.

For the golfer with everything: how about an antique hickory club, \$155 to 175. Or dinnerware w/golf motif, \$7 to 37.

Holiday Cheer

The Green Boutique Nursery & Gift Shop

- Florist Quality Poinsettias
- Gourmet Foods
- Custom Gift Baskets
- Unique Gifts
- Collectables
 - Dickens' Village
 - Crabtree & Evelyn

1014 Bloomingdale Ave.
685-9494

HOURS
Tues.-Sat. 9-5:30
Sun. 12-4
Closed Mon.

UNIVERSAL JEWELERS



1 Ct. Ring
\$399.00



1 Ct. Heart
\$399.00



Tennis Bracelets
1 Ct. \$399.00
2 Ct. \$799.00
3 Ct. \$1299.00
4 Ct. \$1399.00

ONE FREE SOLDER FOR CHAIN OR RING PER CUSTOMER

928 W. Brandon Blvd.
654-9109

Red's Sports HOLIDAY SALE

IN-LINE SKATES
ALL 25% OFF!!
EXP. 12-25-93

7-56 Buy on reg. price get on a price

OFFICIAL LIGHTNING HOME & AWAY IN ST. CUSTOM LETTERING WEEK TURNAROUND

867 W. BLOOMINGDALE
KINGS ROAD

Mon.-Fri. 10-8
Sat. 9-7
Sun. 12:30-6

654-7



deas

Gift Ideas

Gift Ideas



Red's Sporting Goods

Red's Sporting Goods has moved to a larger location and owner, Gary Redmon, invites area residents to visit and shop at 867 W. Bloomingdale Ave. in the Kings Row Shopping Center.

Red's has served the area for six years and carries top-of-the-line products at competitive prices, including licensed professional and college wear and name brand athletic shoes including Nike and Reebok. The store also carries Mizuno and Easton baseball equipment and Umbro athletic wear.

Spring baseball equipment is now in stock, and with practices beginning right after the new year, Christmas is a great time for giving gifts that will fill those baseball needs.

Red's can place special orders in time for Christmas, and their expanded facility has increased their capacity for monogramming and silk screening services.

Visit Red's on Monday through Friday 10 a.m. to 8 p.m., Saturdays 9 a.m. to 7 p.m., and Sundays 12:30 to 6 p.m.

The Green Boutique Nursery and Gift Shop

The Green Boutique Nursery and Gift Shop has catered to the personal needs of its customers since 1978, when Rosalind and Mark Creager opened for business at 1014 Bloomingdale Ave. The nursery and greenhouse feature a variety of ornamental and landscape plants and flowering annuals. And now for the holidays, florist quality poinsettias - potted, hanging baskets, and lush hanging gardens. The beautiful poinsettias are a holiday favorite and prettier ones can't be found.

Customers will also delight in visiting the wonderfully unique gift shop that features custom gift baskets, gourmet foods, and collectables such as Dickens' Village, Dept. 56, and a full line of Crabtree and Evelyn. One-of-a-kind ornaments, crystal and porcelain pieces, wall decorations, and classic, fine linens provide a feast for shoppers.

If you are looking for that very special gift or if you are just wanting to treat yourself, visit the Green Boutique Nursery and Gift Shop. Hours are Tuesday through Saturday 9 a.m. to 5:30 and Sundays from 12 to 4 p.m.



This Christmas you can please the golfers on your list with *one stop...*

all-golf gifts!

889 E. Bloomingdale Ave.
Brandon, FL 33511
(813)661-1778

- over 350 unique gift ideas, personally selected by golfers, in a wide range of prices
- MC, VISA & American Express accepted
- FREE gift packaging
- Children's play area
- Gift Certificates
- Customer "Wish List"



rel!! Yes, it's
nd with soccer
r, Soccer Field
is the place
needs.
and more, we
ns such as XXS
alls. Our selec-
second to none.
ur business with



Signature Sports

When Jim McConnell and Clyde Heape opened Signature Sports, they knew they were offering Bloomingdale residents something really unique - sports collectables the likes of which cannot be found in this area. Signed game-used bats, autographed professional and college footballs and basketballs, team jackets and shirts, and a large selection of trading cards are on display and for sale. If they don't have that special item you want, then they will order it.

Sports collectables make great gift ideas, from the trading cards perfect for stocking stuffers to autographed memorabilia that will become more valuable with age. And during the months of November and December, Signature Sports is offering a 20% discount on its merchandise with the coupon featured in their ad on this page.

If you haven't already sneaked a peak inside Signature Sports, drop by and see their exciting collection in Bloomingdale Square between Stuarts and Publix. Store hours are 10 to 6:30 on Tuesday through Thursday, 10 to 9 p.m. on Fridays, 10 to 7 on Saturdays, and 1 to 5 on Sunday.

Bloomingdale Square Liquors

Plenty of Holiday Cheer can be found at Bloomingdale Square Liquors located in the Wal-Mart Plaza between Stuarts and Publix. Privately owned by longtime Bloomingdale resident Randy Cunningham, the cozy and personal store's prices are competitive with larger chain stores.

Bloomingdale Square Liquors carries a wide selection of fine wines and imported beers not found anywhere else in Brandon. Residents are invited to stop in and register for the newly formed wine tasting club, perfect for holiday get-togethers.

In keeping with the personalized attention to each customer, Randy will customize gift baskets and will special order those hard to find items. In addition, he will ship anywhere in the continental U.S. There is no order too small or too large.

Store hours are 10 a.m. to 9 p.m. Monday through Saturday and 1 to 6 p.m. on Sundays.

Signature
SPORTS

Sports Memorabilia • Team Wearables • Sports Cards

Bloomingdale Square
881 Bloomingdale Ave. **681-4230**

Sports Cards make Great Stocking Stuffers!

- 1992 Limited Edition of 144 ALABAMA Championship Football
- All Team Wearables on Sale
- Gift Certificates

20% OFF "With this Ad"
All Memorabilia during
November & December

ng Goods
CIALS!!!


REEBOK
LADIES
SHOES
ALL
25% OFF!!
EXP. 12-25-93

AME JERSEYS,
K! ONLY \$79.99!
AVAILABLE, ONE

NGDALE
PLAZA

VISA
DISCOVER
MASTERCARD

Happy Thanksgiving
from



Bloomingdale Square LIQUORS

Between Publix and Stuarts
661-2228

Best Selection of Imported Beers
and Fine Wines in Brandon

Special Requests Welcomed

Competitive Pricing and
Case Discounts

Patches & Lace

- Collectables
 - Dickens' Villages
 - Snow Babies
 - David Winter Cottages
- Handcrafted Gifts
- Christmas Shoppe

167 E. Bloomingdale Ave., Brandon
(At John Moore & Bloomingdale
by Winn Dixie Marketplace)

685-8498

HOURS
M-F 10-6
SAT. 10-4

Bulls Eye



Homecoming '93 Memorable

By Brian Bergin
Correspondent

Homecoming 1993 was celebrated in typical Bloomingdale style...with class. On October 9, the Homecoming dance was held in the school cafeteria where the crowning event of the evening was the announcement of the Homecoming Queen and King - seniors Amy Funkheuser and Josh Trent.

The students and their dates danced the night away under a ceiling of purple and green balloons, while park-type benches and small trees lined the walls to add to the romantic atmosphere.

There was an array of tuxedo and dress styles including penguin look-alikes, coats and ties, short dresses and long gowns, Scottish kilts, blue jeans and cowboy hats, military uniforms, tennis shoes, and believe it or not, a

green Mohawk. Students didn't seem to mind the 30-minute wait for photographs, as long as their "look" could be captured on film.

The Student Council sponsored the event which truly was "A Night of Knights."

Carni-bull A Big Night For BSBS

by Melissa Merkle
Correspondent

The second annual Carni-bull was a huge success. The Friday night before Halloween provided students and area residents with four hours of entertainment at Charley Harris Stadium.

Students enjoyed favorite carnival games such as ring toss and the especially popular teacher dunking booth. For a fee, patrons could have their friends "imprisoned" for a few minutes, or enjoy the hayride, a new feature at this year's event.

Carni-bull is sponsored by Student Government and organized by and with the cooperation of Student Government and the Interclub Council. Any and all clubs could participate in Carni-bull as long as they created an original booth.

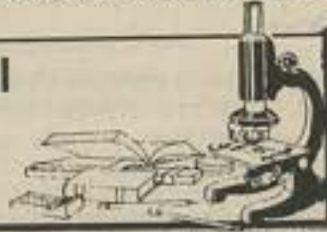
Carni-bull began last year when the Student Government wanted something totally new and different. When some of the students went to Manatee High School's carnival, they thought it was a lot of fun. Carni-bull was established to take the place of night pep rallies.

What started out as a high school project has flourished into a spectacular, fun-filled night for the community.

Carni-bull is designed to familiarize the community with the student activity groups at Bloomingdale Senior High School, and it is open free of charge to students at local schools and their families.

The student correspondents from Bloomingdale High School are members of Mrs. Carol Lopez's Journalism class.

Educational Edge



Help Children Become Better Readers

Reading begins in the home. Before children ever go to school, they acquire knowledge that lays the foundation for reading. They learn about objects, events, thoughts and feelings, and they develop the language skills to express ideas and describe their experiences.

As parents, you play a crucial role in laying this foundation. You are your children's partners in learning. Parents' expectations and the experiences provided by parents influence how much and how well children read.

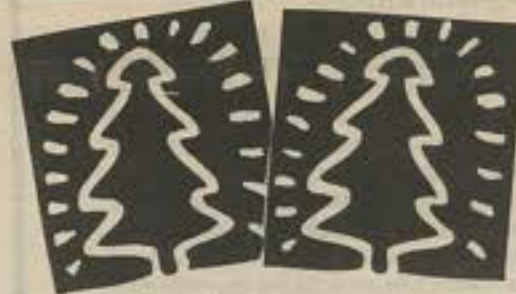
Here are some tips on what you can do to help your children become good readers:

- Help your children acquire a wide range of knowledge. When you take your children on shopping trips and visits to zoos and museums, you help give them important background knowledge.
- Talk with your children about their experiences. This helps build vocabulary and expressive skills. Also, you help them learn from their own experiences.
- Encourage your children to think about events. This makes them reflect upon experiences and helps children learn to give good descriptions and tell complete stories.
- Read aloud with your children. Reading aloud is the most important activity to encourage success as readers.
- Provide preschool children with writing materials. Writing is an important way for children to learn about letters and words.
- Encourage children to watch TV programs with educational value. Help them learn from these programs by

asking questions and relating what they are seeing to other experiences.

- Monitor how much TV your children watch. Most children who watch TV 20 or more hours per week, do not do well in school.
 - Monitor your children's school performance. Children become more successful readers when parents are involved in their education and have an accurate view of their school work.
 - Encourage children to read independently. Have plenty of books in your home and visit the library regularly.
 - Continue your involvement in your children's growth as readers. Set a good example by reading newspapers, magazines and books. Establish a daily time for reading.
- Most children learn how to read. Whether they become good readers depends in large part upon your help and encouragement.

Educational Edge is provided by Huntington Learning Center.



The Living Christmas Trees

A Brandon Family Tradition!

December 11 & 12 - 3:00 PM Matinee December 10, 11, 12, 13 - 7:00 PM Nightly

Tickets by mail order only.

Ticket Order Form

Open seating on reserved rows: I would like _____ tickets at \$6.00 each.

Performances: Check appropriate box and indicate number of tickets

- 7:00 P.M. Friday, Dec. 10th _____
- 3:00 P.M. Saturday, Dec. 11th _____
- 3:00 P.M. Sunday, Dec. 12th _____

- 7:00 P.M. Monday, Dec. 13th _____
- 7:00 P.M. Saturday, Dec. 11th _____
- 7:00 P.M. Sunday, Dec. 12th _____

Handicapped seating required _____
(Seating for the hearing impaired Fri. and Sun. performances only.)

2nd choice (if 1st choice is not available)

Time _____ Day _____ Date _____

Enclosed is \$ _____ for _____ tickets and a SELF ADDRESSED STAMPED ENVELOPE:

Name _____

Address _____

City _____ State _____ Zip _____

Home Phone: _____ Business Phone: _____



Make checks payable to: Tree Tickets Bell Shoals Baptist Church
2102 Bell Shoals Rd., Brandon, FL 33511

NO ORDERS WILL BE ACCEPTED BY PHONE. NO EXCHANGES OR REFUNDS.

For further information call 653-3875 ext. 178



Hats Off

Hats Off to the people of IMC AgriCo and to the Alafia PTA for their joint project that resulted in the school's two new marquees that give parents day-to-day announcements. Parents who drive along Culbreath or Nature's Way get messages coming and going. The turquoise and white signs featuring the school's alligator mascot cost around \$1400 each. According to Alafia principal, Susan Lizer,

IMC works in the community and they are concerned about people finding out more about them. They offered to give the school one marquee as they have done at other schools in south Hillsborough County. The PTA added the second marquee.

Terrific Kids at Alafia for the month of September were kindergarteners Glenn Figueroa, Janell Avilas, Ray Melendez, Brooke Weinstein and Melissa Rogvin; first graders Rebecca Szabo, Jared Contat, Jason Poole, Mark Wangerien, Suzie Spiker, and Nickola DiVincenzo; second graders Frank Remley, Sarah Dlugos, Marie Gess, Tracy Milnamos, Meagon Bryan, and Christina Showalter;

Also third graders Steven Rose, Sam Partin, Katie Fowke, Bryan Donaldson, Joe Hazuka, and Sam Hagin; fourth graders Ryan Doland, Erica Duci, Michael Esposito, Krista Young, Jackie Craig, and Amber Frangipane; fifth graders Tara Escribano, Amber Mello, Melissa Lomax, Kyle Houski and Pete Watson. Terrific Kids from special classes were Gretchen Desch, Liz Grace, Della Stone, and Heather Gray.

The program is sponsored by Kiwanis Clubs and recognizes children in areas of citizenship, cooperation, and effort. The children receive coupons from area businesses.

Congratulations to **Barry Davis**, Bloomingdale High School's new Assistant Principal for Administration. He was recently appointed to his new post by the Hillsborough County School Board. Davis was previously the school's A.P. for student affairs.

Matthew MacGiffert and **David Henderson** were recently named "Students of the Month" at Mary Help of Christians School in Tampa. Matt is the son of local realtor Donna MacGiffert and David is the son of Dr. and Mrs. Greg Henderson of Valrico. Both boys are in the 7th grade.

Fact: There are more college-bound graduates from Bloomingdale High School than from any other public school in Hillsborough County.



To get a free copy of the Hillsborough County School Report by the National School Reporting Service, Inc. contact *The Bloomingdale Gazette* at 681-2051.

Bruin Beat



Gazette Gives Student Writers Exposure

The Burns Junior High journalism staff will be working closely with *The Bloomingdale Gazette* to produce a segment of Bruin news for the community each month. The journalism staff will be submitting articles not only to keep the community informed but also in hopes of earning a student internship with the paper over the summer.

The BRUIN TRACKS staff is lead by editor-in-chief Matt May. Jehan Glikzman is managing editor and Alysia Frenz is photography editor. Betsy Piepenbring is in charge of distribution, and Melissa Rosner is editor of the "personals" section.

Staff writers and photographers include Elizabeth Ancker, Sarah Crawford, Karen Henry, Kathryn Jaskewicz, Sarah Labram, Elaine LeBlanc, Elizabeth Mantovani, Brianna Nation, Chrissy Nichols, Hollie Nygaard, Pamela Scharf, Laura Shields, Kira Slovacek, Sandy Smith, April Smoak, Nathan Stahl, Julie Taylor, Courtney Tinder, Laura Vella, Erika Wilson, Carla Miller, and Bobbi Moody.

The all-9th grade staff is taught by Phil Carr.

Burns Happenings in November

The Media Book Fair will be held the week of Nov. 8 through 16 in the school's media center.

Burns' Parent Interest Committee will meet on Monday evening, Nov. 8, at 7 p.m.

All State Choral Auditions will be held at Chamberlain High on Nov. 8.

Thursday, Nov. 11, is a School Holiday in honor of Veterans' Day.

Report Cards will be issued on Friday, Nov. 12.

The school will celebrate American Education Week with special activities during the week of Nov. 15.

Students will be released at 1:35 on Wednesday, Nov. 17, a county-wide half-day of school.

All schools will be closed for Thanksgiving Holidays Nov. 25 and 26.

FAMILY DENTISTRY IN BLOOMINGDALE
Experienced and concerned professional care for the whole family
LASER
Dr. Ray Aquilina, D.D.S., P.A.
689-1529
4320 Bell Shoals Rd.
Village Center in Bloomingdale East
Insurance • Military Insurance • VISA • Mastercard

Greet the Season!

Holiday Open House

November 20 & 21

Our Holiday Open House is your first chance to take a peek at all we have planned for Christmas.

Come see our new designs, great values and special offers.

Greg's Hallmark Shoppe
Bloomingdale Square
684-3758

HOURS
Mon. - Sat. 10-9
Sun. 12-5

Donna Mac Giffert

" Donna Mac "
Call Your Neighborhood Specialist

654-7070 (24 hrs.)

- Confident
- Committed
- Consistent

Sales Volume in Excess of \$1,000,000 Every Month

TRAINING • SALES • BOARDING

RIDING LESSONS

Paragrim Farms
South Brandon & Bloomingdale Area

Hunters • Jumpers • Saddlebreds

689-1814

NOW SCHEDULING
Christmas Holiday Clinics
Registering Now
Call for Details

SAFE SHOW QUALITY HORSES PROVIDED
ALL AGES & ABILITIES.

Facts About 93-94 School Year

Hillsborough County went back to school in August housing, busing, and feeding more students than ever before. Here are some interesting facts.

- 160 schools house over 131,000 students in kindergarten through 12th grade
- 156 kitchens prepare 120,000 meals a day
- 50 major construction projects totalling \$257 million are currently in progress
- The projected school budget is \$1,008,142,890.51
- 930 school buses transport approximately 73,000 students, make 36,000 stops a day, and will use more than 2.8 million gallons of fuel.
- More than 21,000 individuals are employed full or part time - 8,294 are teachers.

Business Notes



From The Heart Offers Variety In Gifts And Crafts

Whether you know just what you're looking for or just browsing, you will probably leave with more than one item when you visit From The Heart in the Royal Oaks of Bloomingdale Plaza on Lithia Pinecrest. Residents who enjoy visiting seasonal arts and crafts festivals, don't have to wait for one to come around. From The Heart, a unique shop that leases space to crafters, features a festival of handmade gifts and crafts daily.

Owned and operated by longtime

Brandon residents Cathy and George Guerrette. From the Heart currently has over 60 crafters who display and sell their works ranging from ceramic pieces and dolls, to woodcraft and wreaths. The shop has handmade jewelry, silk flower arrangements, handpainted and stitched clothing, and a large selection of holiday gifts and items for the home all with the personal touch of the individual artist, so no two items look alike. New crafters are always supplying the shop with merchandise, so the variety of items changes monthly.

From The Heart is open everyday at 10 a.m. and closes at 5 p.m. on Monday, Wednesday, and Saturday. They are open until 6 p.m. on Tuesdays, Thursdays, and Fridays. The Guerrettes say they will have extended holiday hours in November and December.

Signature Sports Offers Unique Collectables

If you want it signed, chances are they can get it. Game-used bats, baseballs, Heisman winners' footballs, basketball team balls - they're all available at or by special order from Signature Sports in Bloomingdale Square.

When Jim McConnell and Clyde Heape decided less than a year ago to open a unique sports collectable shop, they knew they could use their connections in business, college, and professional arenas to bring the most unique items to the market. Their shop not only features all brands of trading cards, which they buy and sell, but also a one-of-a-kind (for this area) Heisman display.

Through McConnell's connections with New York's Downtown Athletic Club, sponsors of the Heisman Trophy, he and his wife attend Heisman Week each December. They return with footballs and memorabilia signed by either that year's winner or by every winner in attendance. Customers can place orders in advance for autographed footballs.

McConnell and Heape will also special order selected team items including college and professional athletic wear.

In addition, the shop hopes to feature a professional athlete each month for autograph signing.

Store hours are Monday through Saturday from 10 a.m. to 7 p.m.

Chamber Business Expo
The Greater Brandon Chamber of

Commerce will host over 80 company representatives at its annual Brandon Business Expo, Nov. 10 beginning at 5:30 p.m. at the Sheraton Inn, Tampa. The cost of admission is \$6 which includes complimentary beverage and all-you-can eat food catered by over a dozen Brandon area restaurants. Door prizes will be given away throughout the evening and business booths will also have give-aways.

Dentist Takes Over Local Office

Dr. Jeffrey J. Stuckert recently announced the acquisition of his new office located at 3413 S. Kings Avenue at Bloomingdale, formerly the office of Dr. Scott Bryington. Dr. Stuckert is from the greater Tampa area. He is graduated from the University of South Florida and the Medical University of South Carolina.

Dr. Stuckert has expanded his office hours on Tuesdays and Thursdays from 8 a.m. to 6 p.m., and on Fridays and Saturdays from 8 a.m. to 3 p.m. Katey, Pat, and Clare remain on staff for those familiar with the former practice. Dental services range from cosmetic to full restorative work.



Dr. Jeffrey Stuckert

Real Estate Moves: Map Your Future!

A famous quotation goes like this: "If you don't know where you're going, it doesn't matter which road you take. Any one will lead you there. But how will you know when you've arrived?"

How, then, do you get from knowing you want to purchase a home to the actual moving day? Try using a map of your own creation, one that gives you plenty of choices. With a pen and paper, you can quickly sketch out the highway to your dream home.

You will need answers to three questions to draw your map.

Question #1: Where do I prefer to live? The choice is yours. Determine a specific neighborhood or area in which you would like to live. You might even identify several likely places. Write them down. Before you can begin looking at homes, you should know where you want them to be.

Question #2: In what price range will

I purchase a home? The work "range" is important. The upper end of the range may be set by your ability to qualify for a mortgage. The lower end of the range may be determined by the features and amenities you expect to find in a home. A lender can determine the maximum mortgage for which you qualify, before you even begin house hunting. Know your price range, then stay within its boundaries.

Question #3: What style, size, features, and amenities do I expect to find? Make a long list. Get all family members involved in the creation of this list, then compare notes. Once you have the list, prioritize it. Agree on which features are a must, and which ones are negotiable.

Once you have answered the three questions, you are ready to draw the map to your new home. Enjoy the trip! *Michael Davis is affiliated with RE/MAX Realty Unlimited.*

YOU'RE IN GOOD HANDS WITH



We Sell Homeowners and Automobile Insurance, Regardless of Driving Record or Prior Claims.

DON BUA
681-5303

611 E. Bloomingdale Ave.
(Next to Bloomingdale Square)

STEVE BRIGGS
681-5303

Allstate Insurance Co. and Allstate Life Insurance



DAHLIA
INSURANCE
DIVISION OF DAHLIA CORPORATION

"We want your Homeowners Business"

AUTO * HOME * BUSINESS
LIFE * HEALTH

DICK RUSSO
President

RICK RUSSO
Vice President

CHARLIE THURMAN
Life/Health

SHIRLEY MARTIN
Auto/Home



(813) 685-0861
FAX (813) 685-6393
223 LITHIA PINECREST ROAD
BRANDON, FL 33511



For All the Commitments You Make



SMILE WRIGHT

653-1455

Cosmetic and General Dentistry
• Porcelain Veneers • Bleaching
• Cosmetic Bonding • Crown & Bridge
All performed in a safe, comfortable, gentle setting.

Dr. Joan Lynch has joined Dr. Diane Wright at Smile Wright Dental Center. Together we will enhance services, creating

BEAUTIFUL SMILES!

710 Oakfield Drive, Suite 251
Brandon, FL 33511



Diane Wright, D.M.D.

Evening Hours by Appointment

We follow strict infection control standards



Shirley's
Dance Studio

ENROLL NOW!

- ★ TAP
- ★ JAZZ
- ★ BALLET
- ★ POINTE
- ★ ACROBATICS
- ★ ADAGIO
- ★ KINDERDANCE & COMBO
- ★ SHOES & DANCEWEAR AVAILABLE



CALL FOR MORE INFORMATION

685-7289

Shirley Cuscaden, Director
Established 1971

4326 Bell Shoals Road

• FAMILY RATES AVAILABLE (1 mile South of Bloomingdale)

Member Dancemasters of America
Member Chamber of Commerce

Benefit Brings In Bucks For Baseball



Bloomington Little League raised over \$12,000 from a benefit concert staged in October by the group Calabash. Over 500 attended the event, delayed one day due to rain. Baseballs autographed by pros such as Don Mattingly and Reggie Jackson were auctioned off and a check from Yankees owner George Steinbrenner gave a boost to funds. Commissioner Lydia Miller presented the check to organizer Terry Morehouse and league president Alan Berry (bottom left). Courtland Hunt and Beth Sheubrooks (top left) were the league's two top fund raisers, bringing in over \$1000 combined.

"Jawsome" Exhibit Opens At MOSI

Just when you thought it was safe to go back to MOSI, the dinosaurs are gone and now the Museum of Science and Industry is infested with sharks. A splashy exhibit, Sharks!, opened last week and will continue through Jan. 2.

Guests can come face to face with a 22-foot great white shark, a Dinamation robotic model called Carcharodon, which means "flesh-rendering tooth." From the safety of a shark cage, museum goers can view taxidermied specimens of a great white, hammerhead, tiger, blacktip, lemon, nurse, and bull shark. Some shark relatives - rays, skates, and a dolphin - lurk nearby.



A touch tank allows visitors to get up close and personal with various creatures of the deep. The catch of the day may include guitarfish, horseshoe crabs, star fish, or mollusks.

Several hands-on activities will answer questions about shark anatomy, senses, and physiology. Guests can match wits with Sherman Shark, an interactive computer game that challenges trivia experts.

Although sharks have existed for 400 million years, 200 million years before dinosaurs, much remains to be learned. Research on these mysterious creatures continues and, in fact, latest studies concern the relationship between a shark's immune system and a human's, and the possible use of shark products to fight human diseases.

MOSI Calendar for November
Camp-In Dates this month are the 12th, 26th and 27th. These overnight programs involve special work-

shops, a pizza party, a show in the Saunders Planetarium, and other activities. Programs begin at 7 p.m. and last until 9 a.m. the next day. Campers should be seven years or older, and large groups may reserve an Open Camp-In with a minimum of 50 people. The cost is \$17 per child for an Open Camp-In, or \$23 for members and \$30 for non-members for a Public Camp-In. There should be at least one adult chaperone for each group of 10 children. The chaperone cost is \$7.

FunShops will be held Nov. 13 and are for children four to six years old to include children with special needs. Through hands-on experiences, children learn about the science behind everyday and no-so-everyday happenings. This series of classes also seeks to promote an understanding and acceptance among young children of peers who have exceptional and special educational needs. FunShops are held every second Saturday from 9:30 to 11:30 a.m. The cost is \$14 for nonmembers and \$10 for members. There is a maximum number of 12 children per class.

Great Escapes this month goes to Tarpon Springs for a cultural tour and biking the Pinellas Trail. It will be held on Nov. 20 from 9 a.m. to 2 p.m. The cost is \$19 for members and \$23 for nonmembers. Great Escapes are trips for individuals and families and have included activities like hiking, canoeing, camping, and fossil digs.

NOV. 25 / DEC. 25
The Holidays Are Rapidly Approaching!
 MAKE YOUR TRAVEL PLANS NOW!!!
 AVAILABILITY IS ALREADY LIMITED.
654-8840
RIVER HILLS TRAVEL, INC.
 1002 Lithia Pinecrest Rd. Brandon, FL 33511
 (Located on corner of Bell Shoals & Lithia Pinecrest)

SMOOTHIE KING

Over 36 flavors of all-natural smoothies...Supplements to help burn fat and increase energy...Wide selection of vitamins...Variety of delicious, all-natural, low-fat snacks...And the latest in sports nutrition products!

815 E. Bloomingdale Ave, Brandon (In Bloomingdale Square)
684-6636

SMOOTHIE KING Buy One Get One Free!
 Any regular priced Smoothie Expires 11/30/93

SMOOTHIE KING Frozee FROZEE FRENZY!
 Have a Frozee Frenzy at Smoothie King!
 For every 2 frozees you buy, we'll give you the 3rd one FREE!
 Expires 11/30/93

Primary Prep
 Quality Learning Environments

What do we have to be thankful for?

Just a few things come to mind...
 Children...
 Terrific teachers...
 Helpful parents...
 Children...
 Well-rounded programs...
 A happy environment...
 And children!!!

Come by and see what contentment is all about. At Primary Prep our main goal is a well-adjusted child.

Owner: Christine Terrell
 Director: Gail Bjornson
 LIC # C- HC-193
 3720 Canoga Park Drive
 Just south of the Wal-Mart
 Hours: 7am to 6pm

654-1942
 Hours 7 a.m. to 6 p.m.
 Bloomingdale Ave.
 Bloomingdale West

HALF OFF ENROLLMENT FEE THROUGH NOV. 30!

Bulls, Bruin Athletic Calendar

Nov. 5	District Diving	Noon
	Copeland Pool, Tampa	
Nov. 6	District Swimming	
	USF Natatorium	9 a.m.
Nov. 9	Girls Basketball	
	vs. Armwood	6:15
Nov. 11	State Swimming	
	Orlando	
Nov. 12	State Swimming	
	Orlando	
	Football v Brandon	7:30
Nov. 13	State Swimming	
Nov. 19	Girls Basketball	
	vs. Robinson	6:15
	Girls Soccer	
	vs. Jefferson	7 p.m.
Nov. 22	Boys Basketball	
	vs. Armwood	6:15
	Burns Basketball	
	vs. Dowdell	6 p.m.
Nov. 23	Girls and Boys	
	Soccer v Plant	7 p.m.
Nov. 29	Burns Basketball	
	vs. Turkey Creek	6 p.m.
Nov. 30	Girls Basketball	
	vs. Plant City	6:15
Dec. 2	Boys Basketball	
	vs. Robinson	7 p.m.
	Burns Basketball	
	vs. Tomlin	6 p.m.
Dec. 4	Boys Soccer v King	1 p.m.
	Wrestling v Jefferson	1 p.m.
	Boys Basketball	
	vs. Plant	6:15

Volunteers from pg. 1

rest of the company, he likes to "give back" to the community.

Most of the firefighters became volunteers to gain experience with hopes of joining the paid ranks. Most grew up in the Brandon area and say they want to give back something to their community. The department has 18 volunteers including a trauma nurse from Lakeland.

Todd Fortner has been a volunteer for two months and says that saving lives is "the best feeling in the world." He does not like the disrespect some motorists show on the road when a truck is trying to reach a scene.

Lt. Susan Harvey has been in the department for three years. She first gained interest in becoming a firefighter 12 years ago. After she walked away from a serious car accident, she stopped by the station to thank the firefighters for helping her. She joined as a volunteer three months later. She sees her job as being part of a "social clean-up crew", taking on jobs that no one else can do or wants to do.

Fireman Cliff Bassett, who has been with the department for seven years, says the worst part of his job is when everything is done "by the book" at a call and he can do nothing to help.

Bassett remembers his first call well. It was early 1987 when two engines were sent to a house fire. Due to a plugman's error, the hoses went dry when two five-gallon drums of kerosene glowed red from the heat and were about to explode. Bassett recalls that the barrels were hosed down just in time. Afterwards, when he was on a break, Bassett narrowly missed being hit by a falling chimney.

"This is hard work," he remembered saying to himself at the time.

Lt. Harvey said that when she first joined the department she had some doubts about her ability to cope at accident scenes. Now she can look back at certain situations and wonder how she performed so successfully. She said that one of the hardest parts of the job is remaining clinical and professional at a bad scene. Harvey mentioned that it is especially difficult when one or more calls come in directly after another.

The volunteers remember the first week of May this

year in particular. They received 20 calls, and there were four bad calls in one day. Harvey said that good coping on the part of the crew has much to do with good leadership and experience.

The department takes about 600 calls per year, the most frequent being medical calls, according to Chief Listrow.

Other aspects of their job include upkeep of the station house and equipment. The volunteers also teach fire prevention and conduct safety inspections. All volunteers are educated in the same way paid firefighters are.

Since its founding in 1973, the level of firefighters' education is higher. All are trained as Emergency Medical Technicians, and Bloomingdale is the only station where 95% of the volunteers take continuous in-service training.

The volunteers rely on community donations, and each year conduct a door-to-door campaign to collect funds for firefighter training. Funds are also solicited in an annual mail-out.

Volunteer stations can send at least three and as many as 12 people on a call. Manpower is a large factor in structural fires, and the volunteers play an important role when career departments need extra help.

Rodeo from pg. 1

paralysis. However, less than 5% of children wear helmets.

Lithia Springs is the first elementary school in the county to join the Safe Kids Coalition, and its PTA hopes that the bicycle rodeo will spearhead their pilot program and encourage other schools' parent-teacher groups to join the coalition.

A bike rodeo is an event that brings children and adults together to teach the skills they need to survive on the road. It consists of courses to practice skills, and displays to educate children and their parents. It will include such basic survival techniques as riding straight while avoiding potholes, crossing busy streets without getting hit by a car and being able to look back over the left shoulder without swerving to make a turn.

"Bike rodeos are not contests where children compete against one another to see who is the best. It is a life saving activity and could be one of the most important fun "family days" you could participate in," said PTA spokesperson Gail Turner.

She stressed that helmets will be required to participate in the skills course. They will also be offered for sale and "loaners" will be available.

Horse Boarding
EVENING STAR RANCH

Beautiful Facility in a Country Setting

- Extra large concrete stalls.
- Large covered Paddocks.
- Lit riding arena. Full jump course.
- Lots and Lots of trails.
- Close to Country Park.

 15501 Boyette Rd.
Riverview, Fl
(813)654-2287

CAT HOTEL
A COUNTRY CAT HOUSE

Rates \$6.00 - \$8.50 per day

Make Your Holiday Reservations Early!



Let us pamper & care for your family's cat. We have everything cats love. Serving Butterball Turkey for Thanksgiving Dinner!

- Large units on huge windows overlooking gardens. (for lizard, bird & squirrel watching.)
- Aquarium views - 3 level treehouses.
- Soft music, daily playtime, 24 hr. attendants.

Come see our beautiful hotel before making your cats care arrangements. It's worth your peace of mind.

15501 Boyette Road or call for brochure
654-2287 (654-CATS)

Ken Hope
Air Conditioning & Heating, Inc.




\$5.00 OFF
SERVICE
CALL

671-2107

State Cert. # CACO43887

FREE 2nd OPINIONS



Performance. Protection. Quality.

Diasticks

OIL CHANGE

17 POINT OIL CHANGE
\$21.95
(SEE COUPON BELOW)

\$3.00 OFF

OUR FULL SERVICE OIL CHANGE

\$18.95

Reg. \$21.95

PRICE INCLUDES CHOICE OF OILS:
PENNZOIL 30W, 10/30, 10/40
CASTROL GTX 20/50

- Transmission Fluid Change
- Differential Fluid Change
- Radiator Flush
- Fuel Injection Service
- Brake Service
- Tune-Ups
- Belts & Hoses
- Valve Cover Gaskets

BRAKE SPECIAL

\$49.95

(PER AXLE) (MOST CARS)

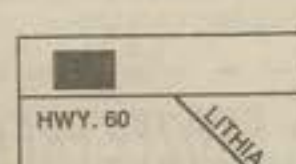
INCLUDES:
✓ NEW BRAKE PADS OR SHOES
✓ RESURFACE DRUMS & ROTORS
✓ REPACK WHEEL BEARINGS
✓ INSPECT & ADJUST HYDRAULIC SYSTEM
✓ SPECIAL SEMI-METALLIC PADS ARE EXTRA

Valid only with coupon. Not valid with other coupons or on sale items. Coupon Expires 12/31/93

314 E. BRANDON BLVD.

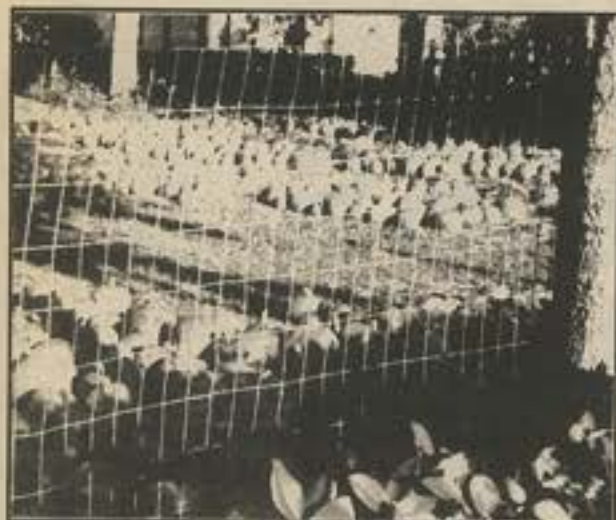
684-8705

ACROSS FROM SCOGGINS



Owned and Operated by a Bl. Resident

HOURS:
Monday - Friday
8 a.m. - 6:00 p.m.
Saturday
7:30 - 6:00 p.m.
Sunday
11 a.m. - 3:00 p.m.



It wasn't Charlie Brown's pumpkin patch, but St. Andrew's that attracted customers last month.



BHA Meeting

The monthly meeting of the Bloomingdale Homeowners Association will be held Tuesday, Nov. 9, at 7:30 p.m. in the Community Office located at 3232 Lithia Pinecrest Road in the Royal Oaks of Bloomingdale plaza. This month's guest speakers are State Rep. Buddy Johnson and officials from the Hillsborough County Parks and Recreation Department.

Living Christmas Trees Tickets

Tickets are now on sale for performances of The Living Christmas Trees at Bell Shoals Baptist Church. The annual event, which draws thousands of guests each year will be held Dec. 10 through 13, at 7 p.m. In addition, there will be 3 p.m. matinees on Dec. 11 and 12. All performances in the past have been sold-out. Tickets are \$6 each and are available on a first come-first serve basis through the mail. An order form is available in the GAZETTE. For more information, please call 653-3875.

Little League Spring Sign-Ups

Registration for spring baseball and softball at Bloomingdale Little League will be held Saturday, Nov. 13 and 20, from 9 a.m. to 1 p.m. at the civic center located adjacent to the field on Bloomingdale Avenue and Lithia Pinecrest. In order to participate, players must be age 7 by Aug. 1, 1994, or may not turn 16 prior to the same date. Parents must present proof of their child's age at the time of registration.

Veterans' Day Celebration

The first county wide Veterans Day Service will be held Thursday, Nov. 11 at 11 a.m. at the Veterans Memorial Park, 3602 Highway 301 south of Dr. Martin Luther King Blvd. The day will feature music, speakers, and lunch. U. S. Congressman Sam Gibbons will present WWI Commemorative Medals, and there will be a special POW/MIA Remembrance.

Novemberfest

The annual Novemberfest on the grounds of Nativity Church will be held Wednesday through Sunday, Nov. 10-14. The festival includes midway rides, arts and crafts, and tent housing 25 international food varieties and live entertainment by area performers. Yearly, the Novemberfest attracts the third largest crowd in the county behind the Florida State Fair and the Strawberry Festival. Advance ride tickets are available from Nativity School students and there will be two evenings of unlimited rides for one price.

County Fair Opens Friday

Ten days of food, rides, and entertainment begin Friday, Nov. 12 at the Florida Expo Hall, formerly the Florida State Fairgrounds, when the Hillsborough County Fair opens. Live entertainment includes Ricky Skaggs on Nov. 13, Beatlemania on Nov. 15 and Eddie Rabbit on Nov. 17. A Grand Ole Opry review will be staged at 7:30 on Nov. 20, and Waylon Jennings closes out the fair on Nov. 21. Gate ticket prices cover admission to the shows. Ticket prices are \$3 for ages 13 to 61, and \$2 for those 12 and under or 62 and over. Livestock and craft judging as well as a county school marching band competition will be part of the fair festivities.

Rec Center Classes

Staffers of the Parks and Recreation Department and talented area residents offer ongoing classes at the Brandon Recreation Center, 510 E. Sadie St. For youngsters, **Baton and Modeling** classes are held Monday evenings for ages three and older. Class fees range from \$1 to \$2.50. **Sewing** classes are held on Mondays at 9 a.m. and on Wednesdays from 6 p.m. Participants are asked to supply their own patterns and materials. **Oil Painting** lessons are offered on Fridays at 11 a.m. There is a fee of \$3 per week plus supplies. **Weekly Arts and Crafts** classes are held on Wednesdays at 8:30 a.m. There is a small fee for materials. A **Pinochle** group meets every Wednesday at 10 a.m. For more information on fees, times, or other classes offered, please call the rec center at 744-5617.

ALTERATIONS PLUS... by maria inc.

- Dry Cleaning & Laundry
- Expert Alterations
- Monogramming
- Uniforms & Costumes
- Custom Specialty Sewing

DRIVE-UP WINDOW

3662 LITHIA PINECREST RD
VALRICO, FL 33594

MARIA D. TESMER (813) 654-4132

**SPORTS MEDICINE
ORTHOPEDIC SURGERY**

**BRANDON
ORTHOPEDIC
ASSOCIATES**

Laser • Arthroscopic Surgery
Hip & Knee Joint Replacements
Knee • Hand • Foot • Back Surgery
Mini-Incision Carpal Tunnel Release
Sports Medicine

John D. Okun, M.D.
Board Certified

Robert J. Maddalon, M.D., M.S.
Board Certified

Lance T. Sisco, M.D.
Board Eligible

684-3707
Hours By Appointment
721 Robertson Street
Brandon, FL 33511

**IWT™ INTERNATIONAL
WATER TREATMENT, INC.**

**RONALD J. DELAVAN
CONSULTANT**

3908 Santee Way
Suite 100
Valrico, FL 33594

Bus. (813) 653-1967
Res. (813) 685-1711
Fax. (813) 653-1967

GRACE C. LEWIS, CPA

Tax & Accounting Services

3905 Kristin Place
Valrico, FL 33594

(813) 681-4548
FAX 684-1608

26 YEARS EXPERIENCE

Grable

Plumbing Co.

FAST SERVICE

7 - DAY - 24 HOUR

PLUMBING SERVICE

- Hot Water Heaters, Repaired or Replaced Same Day
- We Service All Makes and Brands
- New Toilets, S.S. Sinks
- Garbage Disposals, Faucets
- Emergency Sewer and Drain Cleaning Machines
- Main Sewers Replaced
- Sump Pumps, Septic Problems
- Underground Leaks
- Repipe Specialists

ULTRASONIC LEAK DETECTION

Using the most advanced ultrasonic equipment we locate under-slab leaks with pinpoint accuracy.

**NON DESTRUCTIVE LOCATING
One Day Service**

\$5 OFF with this coupon

DRAINS OPENED FAST

RADIO DISPATCHED

685-3636

Business Opportunity

Serving The Professional Automotive Technician Market

Snap-on offers a unique opportunity to own a franchised Dealership supported by our world-famous commitment to quality and service. With Snap-on, you're selling the world's finest tools and equipment to professional technicians who depend on the Snap-on name for quality & performance.

Snap-on Tools

Dave Spence (813) 681-8473

Pool Too Cool?

FLORIDA SOLAR & ENERGY SYSTEMS, INC.
MAKES YOUR SWIMMING A PLEASURE WITH FREE SOLAR ENERGY!

SPECIALIZING IN SALES & SERVICE OF SOLAR POOL HEATING & HOT WATER SYSTEMS SINCE 1977

FOR FREE SOLAR ANALYSIS CALL:

253-3518

FLORIDA SOLAR & ENERGY SYSTEMS, INC.
BOB HAUENSTEIN, BLOOMINGDALE RESIDENT

Classified

Maintenance and Home Improvements

CARPET & UPHOLSTERY CLEANING: Steam-cleaning; References available; guaranteed satisfaction. Bloomingdale resident. Call 689-9192. 2/94

CUSTOM WALL COVERING: Guaranteed quality; Free estimates; Ref. avail.; Work done by professionals. Bloomingdale resident. 653-3016. 10/93.

PAINTING/PRESSURE WASHING: Interior/exterior; Free estimates, reasonable rates. 20 years experience; References upon request. Bloomingdale resident. Call 689-9192. 2/94

Residents who are...

BABYSITTERS: Kimberly Reiser (15) 684-6006. 1/94

ANSLEY SCIULLI (13) and CRYSTAL SCIULLI (13) 681-7065

AVON REPRESENTATIVES: Ruth Calandro, 689-0212. 6/94

MARY KAY REPRESENTATIVE: Kathy Holcomb, 681-5130

MARY KAY REPRESENTATIVE: Carol Williams, 689-8076

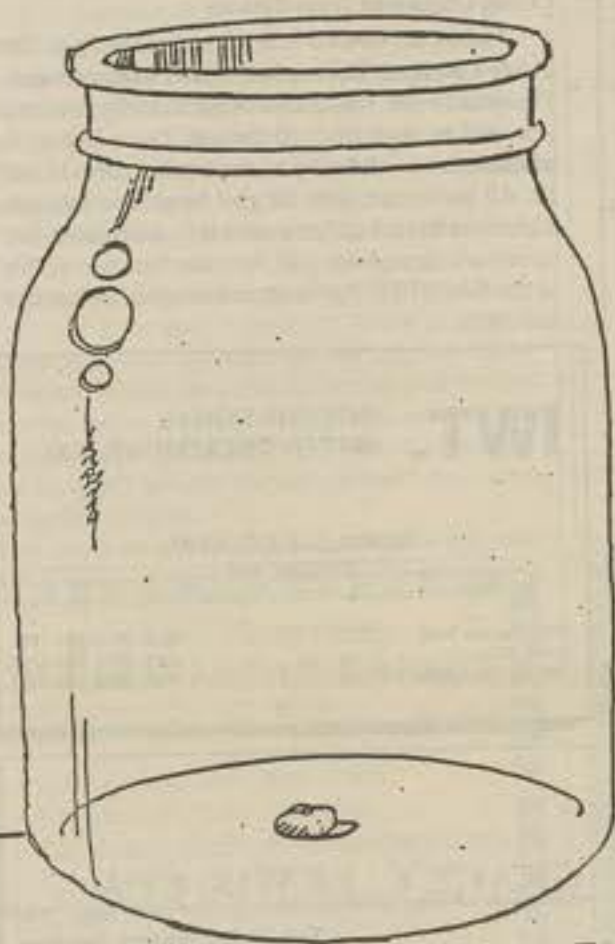
PORTRAIT ARTIST: Pastel, pencil... June Oros, 685-0866

Get Results!

Advertise in our Classified Section.

For more information call 681-2051.

CAN YOU GUESS HOW MANY BEANS ARE IN THE JAR?



Good Guess!
Now, guess who are
the best realtors to
get your house sold. . .
(Take your time. . . .)

CORRECT!



CHUCK FRENZ
685-5894

**DONNA
SULLENBERGER**
684-3929

The Prudential 
Florida Realty
689-8102