



MACK AUSTIN/Photo

## Please STOP For Buses On Bloomingdale

Drivers traveling in either direction on Bloomingdale Avenue where medians are not installed must stop while school busses load or unload. For more traffic and safety news, see the Bloomingdale Area Community Council Update, page 14.

## Residents, BHA Oppose Rezoning Plans



LAURA FRAZIER/Photo

Neighbors living along John Moore Road began meeting last month to discuss their concerns about two rezoning requests for land on Bloomingdale Avenue at John Moore Road. A commercial development request goes before a zoning hearing master Oct. 8 at 6 p.m. The BHA board opposes the request as it stands. See story, page 5.



## In This Issue:

- Inside Connections, 4
- Deed Restrictions Defined, 6
- Boundary Committee, 8
- Community Council, 14
- Letters, 17
- Substation Notes, 18
- Property Manager's Report, 19
- Yard of the Month Form, 23

## Featured Story:

### Tax Increase OKed

see page 10

Annual Countywide Neighborhood Watch Meeting, see page 3



**Hungry Howie's**  
**Pizza & Subs**

**PIZZA • PASTA • SUBS**  
**WINGS • SALADS**

SEE OUR SPECIALS ON PAGE 7



# NEW! 30 MINUTE FITNESS AND WEIGHT LOSS CENTER FOR WOMEN

*Kaprice*  
FOR WOMEN

**\$0 ENROLLMENT FEE!**

*During the month of October pay no enrollment fee! The first 100 women will receive a free gift.*

*\*This is a one time offer for the month of October only.*

**NOW OPEN IN BLOOMINGDALE**

**159 E. Bloomingdale Ave Brandon, FL. 33511**

**662-3885**

**WWW.KAPRICEFORWOMEN.COM**

## Neighborhood Watch Annual Meeting

By MACK AUSTIN

The Hillsborough County Neighborhood Watch Association will hold its annual meeting 7 p.m. on Oct. 17 at River Hills Church of God, 6310 E. Sligh Ave., Tampa.

All members of the association are welcome to attend.

Any coordinator may run for office. Elections will be held for a president and treasurer. In addition, the association is in need of a treasurer.

The board of directors will meet at 7 p.m. on Oct. 8 at the Sheriffs Operations Center in Ybor City.

The board needs volunteers willing to help make Hillsborough County a better place to live and raise a family.

If you belong to Hillsborough County Neighborhood Watch or are interested in starting a watch group in your neighborhood, call Nick Bates at 928-9740 or Deputy Engood at 247-8115.



MACK AUSTIN/Photo

It's safe to say that we all want our families, our homes and our communities to be secure. Neighborhood Watch and Mobile Watch programs are key factors in reducing crime in our neighborhoods.

## County Teams Take Inventory Of Projects

By MACK AUSTIN

We've all seen a sidewalk needing repair or a ditch that was overgrown in our community and wondered when someone was going to take care of it.

Well, how about taking a ride around the whole county to see how many work projects you can find? Be sure and bring lots of paper to write on. Oh, and when you finish you can start all over again.

One way the Hillsborough County Public Works Department is working to better service our communities and take care of these projects is through a special assessment program.

The program incorporates the talents of engineering students from the University of South Florida and involves

them directly in the program. The students are traveling throughout Hillsborough County, about 3000 miles, surveying and noting all work projects that public works units are required to complete.

Once the students complete their inventory of required projects, Public Works managers and engineers will assess and prioritize them. Based on personnel and funding resources available, the projects will then be scheduled for completion.

The county's Roadway Maintenance Division is comprised of four main units (East, South, Central and West service units) and Mosquito and Aquatic Weed Control, along with engineering and support staff that main-

See Inventory, Page 15

## Kitchen Solvers®

Complete Kitchen Remodeling Services!

**Kitchen Remodeling Specialists Since 1982!**

*The Choice is Yours...*

- \*Custom Cabinet Refacing
- \*Elegant Custom Cabinetry
- \*Solid Surface Countertops by Montelli & Corian
- \*Kitchen Design & Planning
- \*Kitchen Accessories

**Ranked by Success Magazine as America's #1 Kitchen Renovation Company!**

Locally Owned & Operated  
**Complimentary In-Home Estimates**  
**(813) 681-1416**  
**Call Today!**

Materials & Installations Completely Guaranteed  
Licensed-Bonded-Insured



## Your Inside Connections

### The Bloomingdale Homeowners Association, Inc.

3509 Bell Shoals Road, Valrico, FL 33594.

(813) 681-2051. Fax: (813) 651-1129

E-mail: [Bloomingdale.Homeowners@Verizon.net](mailto:Bloomingdale.Homeowners@Verizon.net)

Web Site: [www.BloomingdaleGazette.com](http://www.BloomingdaleGazette.com)

BHA meetings are at the community office on the 1st Monday of each month at 7 p.m.

**President** — Ted Grable

**Vice President** — Joe Hickle

**Treasurer** — Pam Liguori

**Director** — Len Jasczak

**Director** — Patricia Radel

**Director** — Tony Diolosa

**Director** — Steve Heckel

**Director** — Cheryl Kehmeyer

**Director** — Michele Caballer

**Director** — Joseph Grem

### Bloomingdale Special Taxing District

3509 Bell Shoals Rd., Valrico, FL 33594

(813) 684-6667

BSTD meetings are held at the community office on the 2nd Monday of each month at 7 p.m.

**President** — Thom Snelling

**Treasurer** — Don Cassels

**Recording Secretary** — Alice Burleson

**Trustee** — Russell Jones

**Trustee** — David West

**Trustee** — Dale Kahn

**Trustee** — Myron Magedanz

**Property Manager** — Al Devney

### Bloomingdale Mobile Watch

**Coordinator/Equipment Manager** —

Tony Diolosa, 681-1146

**Treasurer** — Paul

Kelmer, 681-9701

**Patrol Member** —

Steven Heckel,

654-4266

**Patrol Member** — Brad Scharp, 643-5000

**Patrol Member** — Paul Warr, 685-7883



Wireless provider for Bloomingdale Mobile Watch

### Bloomingdale Oaks Special Taxing District

P.O. Box 3132, Brandon, FL 33509-3132. (813)

685-2817

BOSTD meetings are held at 3419 Cade Lane on the 2nd Monday of each month at 7:30 p.m.

**President** — Bill Grace

**Treasurer** — Fred Englehart

## THE BLOOMINGDALE GAZETTE

The official publication of the BHA since 1980

3509 Bell Shoals Rd.

Valrico, FL 33594

(813) 681-2051

Fax: (813) 651-1129

E-Mail: [News@BloomingdaleGazette.com](mailto:News@BloomingdaleGazette.com)

**Executive Director** — Joe Liguori

**Editor** — Laura Frazier

**Photojournalist** — Mack Austin

**Restaurant Critic** — Elton Dumont

**Yard of the Month** — Rosie Trellis

**Published by Sunbelt Newspapers** — 505 W. Robertson,

Brandon, FL 33511. (813) 657-4500

The Gazette is delivered free to Bloomingdale residents along with The Tampa Tribune on the first Saturday of each month.

**Publisher** — Carla Rockwell

**Advertising Manager** — Tami Donaldson; phone: 627-1322; e-mail: [tdonaldson@tampatrib.com](mailto:tdonaldson@tampatrib.com)

## Neighbors Want Development Details, Restraint

By LAURA FRAZIER

Cattle graze among grand-father oaks at the southwest corner of Bloomingdale Avenue and John Moore Road in Brandon, seemingly oblivious to the suburban hustle and bustle around them.

It's a bucolic scene that stands in stark contrast to the frenetic pace of growth, development and traffic in the greater Bloomingdale area.

A group of neighbors opposing two rezoning requests for property at the intersection say it's only reasonable to expect concrete to eventually replace all of the cows, and many of the trees, at the crossroads.

But the group contends county officials have a legal responsibility to work with developers to clearly define allowable uses and engineering details, and to guarantee the ensuing development

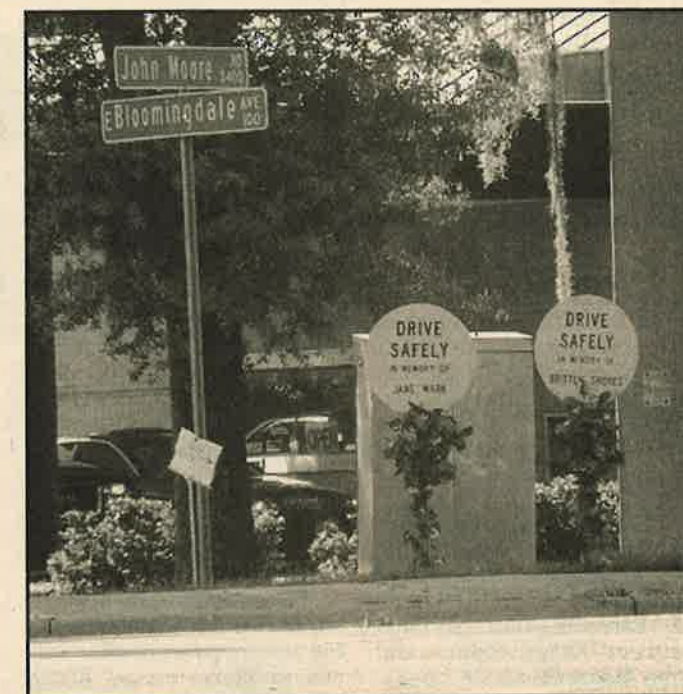
won't add to existing burdens on area traffic, safety, county services, schools and the environment.

A 6-acre parcel at the corner is up for rezoning this Tuesday. The developer wants to build 26,408 sq. ft. of mixed-use commercial buildings on the property. The request was enough to draw the interest of a handful of residents living along John Moore Road.

But when a second developer announced plans to build 150 single-family homes on John Moore Road just south of the intersection, more neighbors organized to get involved in the rezoning process.

A group of about 25 neighbors met twice last month to review the rezoning requests and discuss their concerns. They collected nearly 100 letters of opposition to the commercial project and plan to

See Rezone, Page 6



LAURA FRAZIER/Photo

Friends and family of late Brandon area residents Jane Mark and son Britten Shores, both killed last year in an accident at the intersection, still post memorials and "Drive Safely" signs at the corner. Eighty crashes were reported this year on Bloomingdale Avenue between Kings Avenue and John Moore Road.

## Look Who's Hot

It's  
Renee & Scott  
With

"Perfect 10"

A full service salon  
110 Lithia Pinecrest Ste. A  
Haircutters to Men and Women

**685-8477**



With 20+ years experience we have the talent to give you your best personal look. We've worked with the best from LA to Orlando. We specialize in all phases of haircolor including foil highlights. Don't waste time to look and feel your best.

**Guaranteed  
Best Haircut of  
your life or your  
money back**

We all need advice,  
take advantage of our knowledge.  
Book now for your free consultation.  
We look forward to seeing you.

**20% off  
Haircut**  
first time clients only



Rezone

From page 5

address the zoning hearing master this Tuesday with their concerns.

Resident Jeannette Figari said the neighbors' number one concern is the negative impact high-density, high-traffic development could have on area traffic and safety.

"The Florida Dept. of Transportation already identifies Bloomingdale Avenue as operating at a deficient level of service. We trust that will be taken into serious consideration by the planning and zoning department and county commissioners," Figari said.

The Hillsborough County Sheriff's Office reported 80 traffic accidents this year to date on the half-mile stretch of Bloomingdale Avenue between Kings Avenue and John Moore Road.

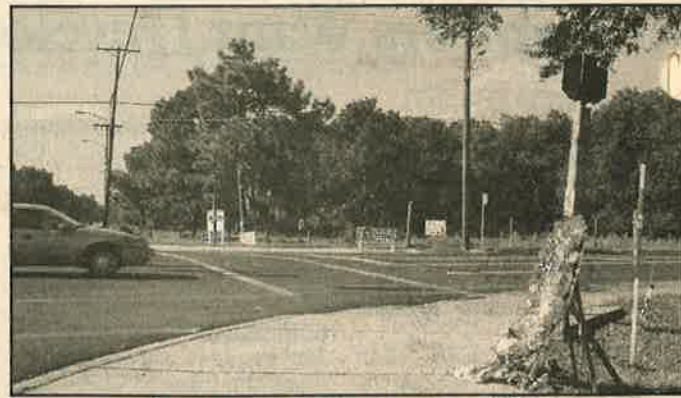
High-traffic uses like drive-through restaurants, gas stations and drugstores are not appropriate at the

corner, neighbors said, especially if the subdivision proposed just south of the corner is approved. Preliminary traffic studies for the residential development indicate the 48-acre project could generate 1,400 additional car trips a day on John Moore Road.

Plans for the subdivision show one gated entrance on John Moore Road. Since the south end of John Moore Road dead-ends at the Alafia River, cars exiting the new subdivision could only travel north through the intersection, or south through two other neighborhoods that already have speed humps installed to slow traffic - Bloomingfield Drive and Windy Circle.

"Details for both projects should be factored into the big picture now, not after serious problems occur," Figari said.

The Bloomingdale Homeowners Association board of directors in September voted



LAURA FRAZIER/Photo

Six acres of land on the southwest corner of Bloomingdale Avenue and John Moore Road are up for commercial rezoning Oct. 8. A 48 acre adjacent parcel is up for residential rezoning Oct. 29.

to oppose both rezoning requests, pending further development details and the county's response to the residents' concerns.

If the zoning hearing master reaches a decision Oct. 8 to either approve or deny the commercial project (case #02-0797), it is tentatively scheduled to go before the Board of County Commissioners for a final decision Nov. 12. The residential project (case #02-

1150) is scheduled to go before a zoning hearing master Oct. 29. Zoning hearings are held at 6 p.m. at County Center in Tampa.

The BHA and neighbors groups encourage anyone with concerns to attend the hearings. Dates are subject to change; check www.BloomingdaleGazette.com for updates and letter of opposition forms. County information: 272-5920.

Defining Deed Restrictions

By STEVE HECKEL  
Bloomingdale Homeowners Association Board Member

What are deed restrictions? What do they cover, and to whom do they apply? Who identifies, reports and enforces violations? These are all questions every homeowner and renter in Bloomingdale should know the answers to.

County codes and ordinances require builders and developers to create, approve and record a set of deed restrictions for reach neighborhood they develop. These restrictions form a legal contract between the county, the developer and all homeowners in the neighborhood. County codes, county ordinances and deed restrictions often overlap and may be enforceable through more than one venue.

Deed restrictions establish building standards within the neighborhood and a contractual agreement on stan-

dards to be maintained within the neighborhood. Restrictions vary slightly among Bloomingdale's 40+ individual neighborhoods, so there are many different sets of restrictions governing communities in Bloomingdale. Basically, deed restrictions set standards so that neighborhoods do not deteriorate, thereby decreasing home values.

Most restrictions address generally accepted building and maintenance standards. Situations unique to a neighborhood, for example, conservation areas or mandatory homeowners associations, are also addressed.

Restrictions apply to every resident of a neighborhood, whether they own or rent the home. When an individual purchases or rents a home in a deed-restricted community, they are required by law to sign a copy of the applicable restrictions. Deed restrictions are a legally binding

See Deed, Page 19



Tom Hayden

Painting & Pressure Washing

Residential & Commercial FREE Estimates

654-1313

Fax 653-2491

Bonded-Licensed-Insured #PA 4506

Let Us Color Your World!

Better Cars Deserve a Better Wash.



If you have a nice car, you should treat it right! Bring it to us for some professional pampering. You'll get a better wash because of our state-of-the-art system and high-end cleaners. You'll get better service because we're totally committed to being the best car wash on the planet. No ifs, ands or bugs.

Complete Detailing Service Available!



Better service... Better wash. 328 W. Brandon Boulevard 662-2404 Open Mon. thru Sat.

Advertisement for car wash services including \$200 OFF ANY WASH, Full Service Special \$6.99, and The Works \$18.99. Includes details on what each service includes and where to find the car wash.

HELP WANTED! Full time with Sundays off! Apply in person Mon. - Thurs. 2 pm - 4 pm.

MIX & MATCH \$9.95 CHOOSE ANY 2 OF YOUR FAVORITE MEALS!

Menu items for Hungry Howie's Pizza & Subs: MEDIUM ONE-TOPPING PIZZA, BAKED PASTA, 10 HOWIE WINGS, LARGE CHEF SALAD, OVEN-BAKED SUB.

BLOOMINGDALE 819 W. Bloomingdale Avenue at Kings 684-0988 WE DELIVER

CROWD PLEAZER, CARRY-OUT SPECIAL, 1-2-3 COMBO, LUNCH COMBOS. Advertisement for Hungry Howie's Pizza & Subs with various meal deals and prices.



# Newsome To Relieve Crowded Bloomingdale High

By LAURA FRAZIER

The boundary committee for Newsome High School, scheduled to open on Fish Hawk Boulevard in 2004, held its second meeting in September. The committee was scheduled to meet again last week.

The 20-member group has not yet agreed on a recommended plan, but principal B.J. Stelter said Bloomingdale High could see relief in the area of 500 students. Over 2,800 students currently attend Bloomingdale, one of the two largest high schools in Hillsborough this year.

Newsome was designed to relieve crowding at Bloomingdale and Riverview High, and is expected to draw primary attendance from those schools. In order to balance enrollment numbers among the schools, committee members have also considered



Construction is progressing on Newsome High School on Fish Hawk Boulevard in Lithia. MACK AUSTIN/Photo

shuffling some students between Durant, Brandon and Armwood High attendance areas.

Non-committee members may not speak at boundary meetings, but are invited to

observe and submit their comments in writing.

Bill Person, the district's director of pupil assignment, said once the committee's suggestions are formulated and approved by the superin-

tendent, a community meeting would be held to gather public input before taking it to the school board for a final decision.

Information: 272-4000.

## Extra Eyes Needed To Monitor Sprinklers

FRIDAY IS WATERING DAY

A Gazette Report

Devney Property Management Inc., Bloomingdale's property management company, maintains several thousand sprinklers used to irrigate Bloomingdale's common areas. In accordance with county watering restrictions, the sprinklers are set to water on Fridays either before 8 a.m. or after 6 p.m.\*

But Al Devney, president of DPMI, said damage or power surges caused by lightning periodically cause some

sprinkler timers to malfunction, resulting in random, unscheduled watering.

Any resident who notices sprinklers running at times other than early Friday morning or late Friday evening is asked to call Devney at 684-6667. DPMI is on call to fix any problems immediately in order to comply with water use restrictions.

\* The Southwest Florida Water Management District in August authorized a variance for the Elton and Bloomingdale Village systems to be watered on Saturday instead of Friday.



## Your "Personal Gardener"

More than just a quick cut, we offer complete gardening and landscape services including but not limited to:

- Weekly Lawn Service
- Laying Sod
- Minor Excavating
- Pressure Washing
- Tree or Hedge Trimming
- Tilling of beds or gardens
- Mulch or Rock Spreading
- Irrigation or Sprinkler Repair
- Landscape Lighting
- Plantings of Trees, Bulbs or Plants

Give us a call for a Free Consultation. We can do your job for you or offer a helping hand!

**813-477-9948**

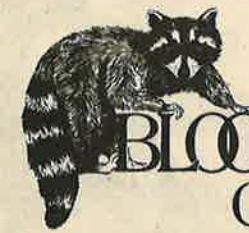
Licensed & Insured

267173

## LETTERS? COMMENTS? QUESTIONS?

E-mail: [Letters@BloomingtonGazette.com](mailto:Letters@BloomingtonGazette.com)

# YOUR HOME FOR GREAT GOLF



## BLOOMINGDALE<sup>®</sup> Golfers Club

### ARE YOU LOOKING FOR A GOLF COURSE TO CALL HOME?

#### Annual Pass Membership

\$750 + tax for Single Membership  
\$1000 + tax for Family Membership

Membership Includes:

- Unlimited Green Fees
- Pay Cart fee only when you play
- Member Only Golf Tournaments
- Member Only Dining Functions

#### Corporate Membership

\$1500 + tax 1st 2 Designees  
\$500 + tax each additional designee

Corporate Membership Includes:

- Unlimited Green Fees
- Corporate Charging Account
- Corporate Locker
- Corporate Guest Rate

Still Not Sure If You Want to Join?  
Give Bloomingdale a Test Drive During Our

#### "Not-Yet" Annual Member Golf Tournament

October 13, 2002  
11:00 am Shotgun Start  
2 Person Flighted Best Ball

\$30 includes:

Golf with cart, range balls, prizes, tee gifts, delicious lunch buffet, and membership specials  
Take this opportunity to check us out and see if you want to call Bloomingdale...HOME"

### WEEKLY EVENTS AT BLOOMINGDALE WE ALWAYS HAVE SOMETHING GOING ON!

**FRIDAY NIGHT DINNERS STARTING OCT. 18**  
Steak, Seafood, Pasta  
Homemade Desserts  
Children Welcome  
Call 657-6033 for reservations

**STYMI PUTTING GAME EVERY MONDAY NIGHT**  
Winner Take All Pot  
Join us afterwards for Monday Night Football  
Food & Drink Specials

**MONDAY LADIES DAY 8:30 START**  
Beginners, Intermediate & Experts Welcome  
Come out and Make Some New Friends

**SENIOR LEAGUE 8:00 SHOTGUN START**  
\$29 + tax includes Golf, Cart & Game  
Lunch Specials Upon Completion

Please call (813) 685-4105 for information on any Bloomingdale Event  
Visit us at [www.bloomingtondale.com](http://www.bloomingtondale.com)

273814



# Canoga Park May Face "Trees for Sidewalks" Trade

A Gazette Report

Bloomington property manager Al Devney last week reported Hillsborough County would start installing sidewalks on Canoga Park Drive Sept. 30.

Devney spoke with contractors hired by the county and found that the work contract did not provide for the relocation of dozens of well-established crepe myrtle trees in the path of the sidewalk construction. Devney said since provisions to replant the trees were not written into the agreement, contractors would uproot and dispose of them.

Since the Bloomington Special Taxing District does not have the funding to move the trees, it looked last week like Bloomington would have to sacrifice trees for sidewalks. Devney planned to contact county staff and taxing district board members to further investigate



Standing in the path of new sidewalk construction, dozens of crepe myrtle trees on Canoga Park Drive could soon be planted at the county dump if arrangements cannot be made to relocate them.

the issue and try to save the trees.

For information, or to offer your opinion, call Eric Nei-

derndorfer with the Hillsborough County Public Works Department at 272-7061, Al Devney at 684-6667 or e-mail

Bloomington.Homeowners@Verizon.net. Watch for updates on [www.Bloomington-Gazette.com](http://www.Bloomington-Gazette.com).

## Taxing District News

### Increase Passed, Two Seats Open

By LAURA FRAZIER

The Bloomington referendum on the Sept. 10 primary election ballot passed when 62.29 percent of 2,474 voters said yes to the \$20 annual assessment increase. A majority plus one vote was required for the referendum to pass. The increase will go into effect in 2003.

The Bloomington Special Taxing District was established in 1985 at an annual cost to residents of \$80.

The \$20 increase approved by residents last month is the district's first increase since its inception.

Taxing district president Thom Snelling said, "The referendum approved by Bloomington residents will allow us to complete entryway upgrades and irrigation projects, and provide better ongoing maintenance for all our

common areas. It positions our neighborhood to remain one of the most stable, sought out and appealing residential communities in eastern Hillsborough County. I am very proud of all my neighbors for supporting this modest but very important increase."

Snelling announced at the September meeting there would be two vacancies on the Board of Trustees. Snelling's term expires this year, but he indicated his willingness to be reappointed.

In addition, the board also accepted the resignation of treasurer Don Cassels.

Those interested in serving on the board are asked to attend the next board meeting, 7 p.m. on Monday, Oct. 14 at the community office, 3509 Bell Shoals Road. Phone and e-mail inquiries are welcome. Call 684-6667 or e-mail [Bloomington.Homeowners@Verizon.net](mailto:Bloomington.Homeowners@Verizon.net).

# Brandon Rock and Landscape Supplies

Serving the Brandon Area Since 1986

- River Pebbles
- Septic Rock
- Fill Dirt
- Road Base Materials
- Bagged Cement Products
- Pea Gravel
- Builder Sand
- Pine Straw
- Landscape Boulders
- Specialty Walks & Patios
- Drainage Design & Installation
- Water Gardens Installed
- U-Card Concrete Available
- Landscape Design & Installation
- Flagstone for Many Projects by the Pound or Ton

### Concrete Statues

**Red Mulch**  
3 cubic ft. bag ..... **\$3.85**  
Cubic yard ..... **\$27.50**

**Cypress Mulch**  
3 cubic ft. bag ..... **\$2.65**  
Cubic yard ..... **\$21.50**

**Topsoil**  
1/2 cubic ft. bag ..... **\$1.35**  
Cubic yard ..... **\$22.00**

**River Pebbles (1/2"-1")**  
50 lb. bag ..... **\$2.85**  
Cubic yard ..... **\$62.00**

**Commercial Weed Prevention Cloth** ... **\$16¢/sq. ft.**

**Garden Wall Blocks (gray)** ..... **\$2.59**

**Pine Bark**  
3 cubic ft. bag ..... **\$2.65**  
Cubic yard ..... **\$17.85**



**Largest Selection of Pond Supplies.**

**Certified Fish Health Technician on Staff.**

**Pond Maintenance & Trouble Shooting Services.**



**Brandon Rock and Landscape Supplies**

Lic. #47221323

**Corner of Hwy. 60 & Miller Road, Valrico**  
**Open 5 Days (closed Sunday & Monday)**  
Tuesday-Friday 7:30am-5:00pm; Saturday 8:00am-4:00pm

**681-8961**

## Academic Tutoring

1st two hours **FREE!\***

*\*New registrations; limited time slots. Ad must accompany registration.*

**BRANDON SWIM & TENNIS Club**  
*Much More Than Our Name*

**689-0908**

405 Beverly Blvd.

Brandon, FL 33511

[www.mybstc.com](http://www.mybstc.com)

BG



# Please Don't Feed The Gators!

By MACK AUSTIN

According to the Bloomingdale Homeowners Association, about 10 percent of Bloomingdale residents have homes on pond-front home-sites. These homeowners have the advantage of being able to enjoy the relaxing beauty that comes with living by the water. They also get to see birds, ducks, herons, turtles and even a snake or two.

Some ponds are also home to one of Florida's largest wildlife animals — the alligator. The gator presents some unique and serious situations that must be considered.

Most alligators will leave folks alone. They want to eat, mate and raise their family in peace. They do eat, especially as they get bigger. Anything that enters their territory is an open invitation to dinner.

They will defend their territory, especially when they have young.

If you spot an alligator in your pond, let your neighbors know, especially if they have pets or children. The alligator can cover the whole pond, and they are very fast swimmers. Perhaps most importantly, do not feed them - this just invites them back. And don't throw things at alligators - this can agitate them. Just leave them alone, but do keep a close eye on them. Keep an even closer eye on your pets and kids. Talk to your kids about what is proper to do and not do with an alligator.

Alligators will come in close to your shore for sunning. This is when many residents immediately want them removed. They usually call County Animal Control, but that agency only works



MACK AUSTIN/Photo

Residents that live by ponds can safely enjoy the beauty of nature by taking special precautions.

with dogs and cats.

Another option is to call Florida Wildlife in Lakeland. Their primary purpose is conservation. The basic guidelines they use to contract a licensed trapper require the alligator to measure at least five feet long and be described as creating a nuisance. This is where the situation is difficult. How do you define nuisance?

The best way to handle the situation is to call Florida Wildlife and give them specific information about the animal. Photos can be helpful. The number is (863) 648-3203. Also check out the Web site at [www.wld.fwc.state.fl.us](http://www.wld.fwc.state.fl.us).

Local wildlife professionals like Animal Capture of Florida can also provide guidance and information. The number is (813) 628-8449.

## The Best Revenge For Gator Haters

**BITE BACK!**

A Gazette Report

Gazette restaurant critic Elton Dumont provided this recipe for Gator-Tater Salad, from the Florida Department of Agriculture and Consumer Services. Dumont discouraged Bloomingdale residents

from procuring the main ingredient from area ponds, suggesting instead they visit their local gourmet butcher shop for safer, albeit less thrilling, sources for the meat.

For waterfront homeowners, this salad is best eaten on your lanai, overlooking (very carefully) your backyard pond.

### Gator-Tater Salad

- 2 pounds Florida alligator meat
- 1/2 cup chopped pecans
- 2 cups chopped potatoes, skin on, boiled
- 1 cup chopped red bell pepper
- 1/2 cup chopped celery
- 1-teaspoon black pepper
- 1-tablespoon vegetable oil
- 3/4 teaspoon minced garlic
- 1 cup Caesar salad dressing
- 3/4 cup crumbled Feta cheese
- 1-teaspoon salt

Cut alligator meat into bite-sized pieces. Heat oil in skillet over medium heat; add meat and cook for 5 minutes, turning once. Add pecans, garlic and cook an additional minute. Remove mixture from skillet and cool. Combine the cooled meat with remaining ingredients; mix well. Chill overnight. Yield: 6 servings.

## Literary Celebrity Visits Alafia

Author and illustrator of popular children's books "Thunder Cake," "Picnic at Mud Sock Meadow" and "My Rotten Red-Headed Older Brother," Patricia Polacco visited Alafia Elementary School last week. Polacco enthralled students with her elaborate storytelling style and participated in several special school-wide events. Alafia staff likened Polacco's stopover to "a visit from Elvis!"



LAURA FRAZIER/Photos



FHA • VA • CONVENTIONAL • NEW CONSTRUCTION • LOT LOANS

**30 YEAR FIXED**  
**5.50%**  
5.86% APR

**15 YEAR FIXED**  
**4.875%**  
5.47% APR

**SMART LOAN**  
**2.75%**  
5.96% APR

No Credit Score • No Income Verification  
No Asset Verification • 20% Down Payment  
Required

**Catch this Dip in the Rates and Save Thousands**



**DUNNE & COMPANY**  
**RIVER HILLS MORTGAGE**

**Just like the stock Market rates dip daily call me to watch & lock your perfect rate.**

4316 New River Hills Parkway • Valrico, Florida 33594

**REDUCED PAPERWORK • SAME DAY APPROVAL**

**CLOSE QUICKLY**

**Located at the entrance to River Hills Country Club**

**Call Tim Dunne at 654-1044**

**River Hills COUNTRY CLUB**

A.P.R. based on \$150,000 loan amount. Rates and terms subject to change. Rates were current at printing date. Equal housing lender.

# Nail Pro

**FALL SPECIAL**  
**MON-WED SPECIALS**  
**PEDICURE \$18<sup>95</sup>**

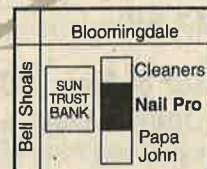
**FILL IN \$12<sup>95</sup>**

**FULL SET \$18<sup>95</sup>**

- Complete Nail Care
- Specializing in Gel Nails
- Acrylic: Pink Whites
- Airbrush Art by Hand
- State Certified Technicians
- We accept all Competitors' Coupons for acrylics

<b>FULL SET</b> <b>\$18<sup>95</sup></b> Reg <sup>25</sup> w/coupon only Exp. 10/30/02	<b>FILL INS</b> <b>\$12<sup>95</sup></b> Reg <sup>15</sup> w/coupon only Exp. 10/30/02
----------------------------------------------------------------------------------------------------	----------------------------------------------------------------------------------------------------

<b>MANICURE &amp; PEDICURE</b> <b>\$25<sup>00</sup></b> Reg <sup>30</sup> w/coupon only Exp. 10/30/02	<b>WAXING EYEBROW</b> <b>\$5<sup>00</sup></b> Reg <sup>8<sup>00</sup></sup> w/coupon only Exp. 10/30/02
-------------------------------------------------------------------------------------------------------------------	---------------------------------------------------------------------------------------------------------------------



**3515 BELL SHOALS RD**  
**655-8406**



## Community Council Update

### A Bloomingdale Area Community Council Report

Bloomingdale Area Community Council volunteers work directly with local law enforcement and county departments to research neighborhood issues and concerns. The council meets monthly. Information: Bloomingdale Community Resource Deputy Pete Maurer or Community Service Officer Sandy Capitano, 635-8040.

The council covered the following topics at its September meeting.

#### Special guests

Jeff Mauch, unit supervisor for Hillsborough County Parks Maintenance Unit II, and Barney Miller, code investigator with the county's Solid Waste Management Department, attended the September council meeting. Mauch and Miller provide



Drivers are advised to come to a complete stop at the new 3-way stop near Alafia Elementary School. MACK AUSTIN/Photo

outstanding services to our community. Mauch's unit has become great neighbors at their facility on Natures Way and has done an excellent job of maintaining the parks in

our area. Miller monitors and has improved our waste management services including garbage collection, recycling programs, the investigation of illegal dumping and the collection of household chemicals.

but all council members agreed that this is an outstanding idea.

#### Traffic Problems

Maurer briefed council members on traffic problem in our area, including drivers passing school busses on Bloomingdale Avenue, rolling through the new three-way stop near Alafia Elementary School, failing to stop and yield on Bloomingdale Avenue at Bell Shoals Road (the addition of a 'no right turn on red' sign is being coordinated) and illegally parking cars for sale on right-of-ways. In addition, Maurer noted problems with commercial trucks traveling side by side and slowing the traffic flow on Bloomingdale Avenue.

Restrictions for trucks to stay in the right lane are being coordinated.

#### Crime

Maurer noted reports of vandalism in several areas including open garages, damage to cars, and disrespect for the American flag.

SAY YOU SAW IT IN THE  
THE BLOOMINGDALE GAZETTE

## Prescription For Overdevelopment?

Construction on the latest pair of corner drug stores commences on Boyette Road near Fish Hawk Boulevard. The freestanding stores seem to travel in pairs these days at busy intersections. Rezoning requests are pending for additional pharmacies to be built on Bloomingdale Avenue at Providence Boulevard and Bloomingdale at John Moore Road. The talk among Bloomingdale are residents: "How many drug stores do we need?"



MACK AUSTIN/Photos



## Homeowners Association Seeks Volunteers

### A Gazette Report

The Bloomingdale Homeowners Association seeks neighborhood volunteers to serve on the board of directors.

Interested residents are encouraged to attend the

next association meeting at 7 p.m. on Monday, Oct. 7 at the community office, 3509 Bell Shoals Road.

For information call 681-2051, visit [www.BloomingdaleGazette.com](http://www.BloomingdaleGazette.com) or e-mail [Bloomingdale.Homeowners@Verizon.net](mailto:Bloomingdale.Homeowners@Verizon.net).

### Inventory

From page 3

tains roads and stormwater systems throughout unincorporated Hillsborough.

Their work is never ending. As the county grows, so grow their tasks.

The roadway division's South Service Unit located off Big Bend Road serves the Bloomingdale community.

They do an outstanding job of maintaining our road surfaces, sidewalks, roadside ditches, stormwater drains, mowing and tree-trimming

within the right-of-ways.

We appreciate the hard work and dedication shown by all of the Public Works units.

We must continue to work with and support them through our community councils and homeowners associations in order to make our neighborhood a great place to live.

When you see them out working, be sure to say thanks!

## Serving Individual Investors Since 1871

- Retirement Plans
- Mutual funds
- Bonds/Stocks
- Government Securities
- Life Insurance
- 401K Review
- IRAs/CDs
- Money market funds



### And now serving coffee in Valrico/Brandon

Join me for our monthly round table discussion at Dan's office on Friday, October 25 at 9:00 a.m. We'll share ideas about current events, the economy, investing and a few cups of coffee. This month's topic is Unit Investment Trusts. The coffee's on me!



**Dan Sammons, CLU**  
(Just Off Lithia-Pinecrest next to "Car Wash on The Greens")  
3616 Erindale Drive  
Serving Brandon,  
Bloomingdale & Valrico  
Bus: 813-681-1462

**Edward Jones**  
Serving Individual Investors Since 1871



## Majik Touch Cleaners

"EXPERIENCE THE DIFFERENCE"

- Bloomingdale 3513 Bell Shoals Rd, 654-9292
- Bloomingdale 4344 Bell Shoals, 689-9176
- Bloomingdale 815 E. Bloomingdale, 681-8700
- Bloomingdale 3248 Lithia-Pinecrest, 654-8113
- Brandon 717 W. Lumsden, 654-9541
- Brandon 913 W. Brandon Blvd, 684-4499
- Brandon 11393 Causeway Blvd, 643-6944
- N. Brandon 213 Kingsway Ave, 653-4535
- Lithia 16739 FishHawk Blvd, 654-7991
- Plant City 2621 Thonotosassa Rd, 752-6631
- Providence 1983 Lumsden Rd, 654-4423
- Riverview 11697 Boyette Rd, 672-1832
- Seffner 1515 S. Parson Ave., 684-5897
- Valrico 1985 E. Brandon Blvd, 654-2324
- Apollo Beach 220 Apollo Beach Blvd, 645-1499
- Valrico 2511 SR 60 E, 643-4825

### \$1.10 EACH

**SHIRTS LAUNDERED**

Valid on Incoming Orders Only - With \$5.00 Minimum Dry Cleaning Order, No exceptions. Limit 10. Blouses, Polo & Boxed Shirts extra. COUPON EXPIRES 10/31/02

### \$5.00 OFF

**ANY DRYCLEANING ORDER OVER \$25**

Valid on Incoming Orders Only - No exceptions. Valid only w/ coupon, not valid w/ other coupons. COUPON EXPIRES 10/31/02

### \$3.00 OFF

**ANY DRYCLEANING ORDER OVER \$15**

Valid on Incoming Orders Only - No exceptions. Valid only w/ coupon, not valid w/ other coupons. COUPON EXPIRES 10/31/02

### 20% OFF

**WEDDING GOWN, DRAPERY CLEANING, BEDSPREADS, COMFORTERS, BLANKETS, ALTERATIONS**

Valid on Incoming Orders Only - No exceptions. Valid only w/ coupon, not valid w/ other coupons. COUPON EXPIRES 10/31/02

273816



# Kaprice For Women Opens In Bloomingdale

**Fitness Center Promotes  
Mind, Body Health**

By LAURA FRAZIER  
frazier1@tampabay.rr.com

A new fitness and weight loss center exclusively for women opened Oct. 1 at the corner of Bloomingdale Avenue and John Moore Road in Brandon. The privately owned center, Kaprice For Women, offers membership perks commonly found at other Bay area fitness clubs, including circuit training and weight loss programs, but with an innovative, new age twist.

Thirty-something owners Chris Tasis and Greg Banning of Tampa left behind their executive careers in the technology industry this year to launch their original approach to women's health and fitness. In naming their new business, the entrepreneurs chose the Greek word that means 'to start anew' — kaprice.

The duo developed a comprehensive wellness program for women that they say promotes a mind, body and spirit connection.

Banning, a nationally certified personal trainer, nutritionist, and meditation instructor, said when it comes to women's health and well-being, "It's not enough to just work the body."

Equally important to helping clients meet their fitness and weight goals, Banning

*"Women of all ages and experience levels can use our machines safely and effectively."*

**GREG BANNING**  
co-owner, Kaprice For Women

said, "We want to build a community where women can take a break from the hustle and bustle of life, do something good for themselves, and support one another."

The Kaprice system centers around a 30-minute circuit-training program. Specially recorded music cues members to switch between 20 machines and alternating rest stations at 30, 45 or 60-second intervals. Banning said the club's machines are specially sized for women, and have little in common with traditional weight bearing equipment.

"Our machines work with the same hydraulics principles as those used in rehabilitation centers across the country for the past 25 years, which means women of all ages and ability levels can use them safely and effectively," Banning said.

The equipment provides resistance to users with a water and oil mixture encased in a cylinder, as opposed to the typical weight and pin contraptions used in most gyms today, he said.



Owners Greg Banning and Chris Tasis opened Kaprice For Women fitness and weight loss center on Bloomingdale Avenue last week.

Like a manual bicycle pump, users control the level of resistance in action; the faster the force applied, the harder the resistance. The modern equipment makes confusing, time-consuming pin adjustments a thing of the past, Banning said.

In addition to the 30-minute circuit training program and weight loss system, members can choose from a variety of ala-carte items including meditation, yoga and Pilates classes, seminars and therapeutic massages and aromatherapy.

Class sizes are small, about 10 to 13 women per class, Banning said. The size of the club is intentionally scaled-back compared to traditional mega-clubs in the Bay area to create a non-intimidating atmosphere and permit members more one-on-one time with instructors.

And you won't find any mirrors in the circuit training area, a feature Banning said would appeal to self-critical women trying to concentrate on their fitness goals.

"We're all our own worst critic, so mirrors can definitely be a negative distraction," he said.

One comfortable corner of

the 2,200 sq. ft. club is set aside for women to have coffee and chat or surf the Internet. Banning and Tasis plan to hold a "pep rally" for members once a week.

The owners of Kaprice have established a charitable program to give back to the community and support women's health foundations. A portion of each new membership is set aside to be split equally between the Susan G. Komen Breast Cancer Foundation and a local charity selected by membership vote each month.

"We are dedicated to making a real, healthy difference to the local community, and to giving back," Tasis said.

The annual sign-up fee will be waived for the month of October, Tasis said. Circuit training and weight loss program memberships start at \$34.95 per month with an annual contract. Classes, seminars and massage therapy sessions are at additional cost and are also available to non-members.

Kaprice For Women is at 159 East Bloomingdale Avenue in the Winn-Dixie Marketplace shopping center. Information: 662-3885 or [www.kapriceforwomen.com](http://www.kapriceforwomen.com).

## Letters

Send letters to [Letters@BloomingtonGazette.com](mailto:Letters@BloomingtonGazette.com) or mail to Editor, The Bloomingdale Gazette, 3509 Bell Shoals Rd., Valrico, FL 33594. All letters are subject to editing.

### County Must Protect Horses, People From West Nile Virus

When I was in sixth grade, my best friend's mother read a newspaper article about a young woman in the Brandon area and her horses. It ended up that Vicki Lawry and her horses lived only a few miles away from us in Hickory Creek, an equestrian neighborhood in south Brandon.

My friend Becky and I made arrangements to meet with Vicki, and soon after started taking horseback riding lessons.

Up until I went away to college, I spent most of my free time with Vicki and her horses. I had a special relationship with one particular mare, Rinda, who died a very painful death at the age of 28 last month.

Rinda was diagnosed with the West Nile Virus. Since learning of the reason for Rinda's death, Vicki has been contacting local and state politicians in an effort to bring some awareness about the threat of West Nile to Hillsborough County residents.

She was told that Rinda is the first confirmed case in the county, however, this

number could be misleading. We were told the blood work could take up to 30 days to diagnose due to work backlogs at the state veterinary labs.

Furthermore, Hillsborough County is a heavily populated equine community. West Nile could be spreading elsewhere and not known if other horses with similar symptoms and/or deaths are not being tested. The other scary thing is that West Nile doesn't only affect horses. As we know, humans in other parts of the country have contracted the disease. Some have died and some have recovered.

I realize that county and state officials do not want to start a panic situation. However, avoidance is certainly not the answer either.

Horse owners need to be alert to sudden changes in their animal's health or behavior. Likewise, people need to know about this case so that they can be vigilant in protecting themselves and their families against any and all mosquitoes. Just think, how many of our children are outside for sporting events or practice at dusk?

The bottom line is that we need to push back when our county says it does not have the funds to do aerial spraying. We need to be aggressive when fighting this virus. Next time, it might not be a healthy horse that West Nile kills.

Julie Magruder

To read more about Vicki Lawry and Rinda's story, visit [www.BloomingtonGazette.com](http://www.BloomingtonGazette.com).

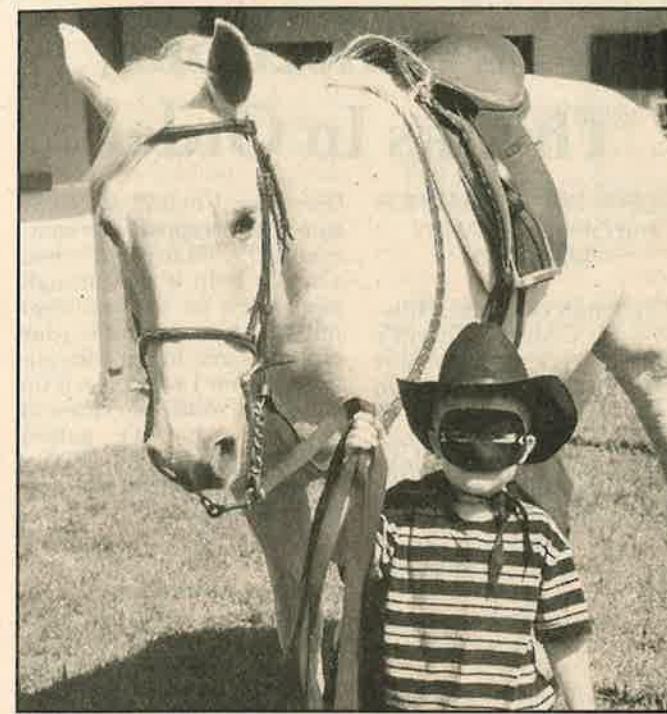


Photo courtesy the Magruder family  
Last Halloween was a happy time for Julie Magruder's then 5-year old son, Tristan, who dressed as Zorro and enlisted Vicki Lawry's horse, Rinda, as his sidekick. Rinda died last month and was diagnosed with the West Nile Virus.

## We have plenty of ways...



...to put a smile on your face.

- Whitening
- Crowns & Bridges
- Dental Implants
- Non-Surgical Gum Treatment
- Most Procedures Completed In Office
- Insurance Filed For You
- VISA / MASTERCARD
- Extended Payment Plans Available

**BRANT**  
**Wade D.M.D.**  
Practicing Fine Cosmetic & Family Dentistry

CALL TODAY  
**662-9233**  
to schedule your consultation

1457 OAKFIELD DRIVE • BRANDON  
[www.drbrantwade.com](http://www.drbrantwade.com)

## Enhance Your Child's Development

THROUGH AN INTERACTIVE MUSIC PROGRAM FOR CHILDREN AND CAREGIVERS (Ages 5 months - 5 years)

Entertaining and educational music program designed to enhance your child's social, motor, language and cognitive development through song, dance, puppets and instruments.

For Class availability call Dawn 643-1097

<b>MONDAYS • 9:30 and 10:30 am</b> First United Methodist Church (SR 60 and Knight St.) Contact Tina 681-8750	<b>TUESDAYS • 9:30 am</b> St. Stephen's Catholic Church (Bell Shoals Rd.) Contact Dawn at 643-1097	<b>FRIDAYS • 11:00 AM</b> Limona Church (405 Limona Rd.) Contact Tina at 681-8750
------------------------------------------------------------------------------------------------------------------------	-------------------------------------------------------------------------------------------------------------	--------------------------------------------------------------------------------------------

\$6.00 per session or 5 classes for \$25.00  
for more information visit [www.musicwithmar.com](http://www.musicwithmar.com)

Look for your  
neighborhood news  
The Bloomingdale  
Gazette



Bloomingtondale Substation Notes

# 9/11 Reflections, Thanks In Order

By DEPUTY PETE MAURER and OFFICER SANDY CAPITANO

On behalf of all the Hillsborough County Sheriff's Dept. officers and support staff who provide protection and service to the Bloomingtondale Community, I would like to extend our sincere thanks to all of you for the wonderful expressions of support and gratitude expressed to us during the first remembrance of 9/11.

All the handshakes and pats on the back were really great.

We all chose to work in law enforcement, to protect and serve. Many of you also work in career fields you chose. What makes America great is when we all combine our skills, our concerns and our commitment to make our lives better each day. Many of you are our heroes too. You sacrifice your time and talents to make our world, our nation and our community safer and better for all of us. We are a team and we must work well together to win the war on terror.

Some of you have asked,

"How can I help?" or "What can I do to support our community?" Many of you already help a lot through your work on various committees at your schools, your churches and in our community. To you I say, "Keep up the great work!" To those of you who haven't gotten involved yet, find an activity or program that can use your time and talents.

Several of our residents help out with reading programs at our schools. Others are active in improving safety and security in our community through Neighborhood Watch or Mobile Watch programs. Still more are very active in their churches, the YMCA, Little Leagues and many other organizations that work with our children and teens. The list of activities needing concerned residents is very long. Just ask around. The main thing is to get involved now. Make your time count. Share it with others.

War has many faces. The one we hear about the most threatens us with bombs and chemicals. Some of the other faces of terror are the war on



The teamwork of Jeff Mauch, Hillsborough County's Parks Maintenance Unit II supervisor, and Bloomingtondale Community Resource Deputy Pete Maurer, is a great example of how improvements in our community are made.

drugs and the war on crime. These terrorize our lives daily right here in our community. Just ask a parent with a child on drugs or someone whose life has been totally ruined by alcohol or drugs. Listen to someone who has been threatened or robbed. These are very real personal forms of terror.

But these are also the forms of terror we can fight right here in our own community. Working together we can all make a positive difference. We have to pull one weed at a time and plant one flower at a time. But soon we will have beautiful garden — our com-

munity. That is our goal.

Again, thank you all for your support. We in law enforcement are dedicated to making your community and your lives safer and more secure. Please continue to help us to help you.

The Bloomingtondale Community Station is at 4342 Bell Shoals Road, near Beef O'Brady's restaurant in the Village Center Plaza. Station hours are 8 a.m. to 5 p.m. Monday through Friday. Information: 635-8040.

For immediate assistance call the sheriff's dispatch center at 247-8200 or 911 for emergencies.

## University Women Meet Oct. 15

By BARBARA REED  
American Association of University Women

The October meeting of the Brandon Branch, American Association of University Women will be Oct. 15 at 6:30 p.m. at Stacey's Homestyle Buffet, 790 W. Dr. Martin Luther King Drive.

Phyllis Busansky, a member of the Compass Project's Steering Committee, is the featured speaker. The Compass Project is a non-partisan organization that represents a grass-roots effort to involve local residents in the election

of leaders who understand the issues, vote responsibly, and carry out their duties

This month, the branch will staff a treat table at Center Place's annual Halloween Horribles Parade on Oct. 27.

The branch is also still selling the Entertainment Book for \$20 to support local and national projects. To purchase a copy, call Barbara at 671-3078.

Membership in AAUW is open to women with a baccalaureate or higher degree from a regionally accredited institution. For information, contact Arlene at 689-8457 or Mary Ann at 681-4502.

## Property Manager's Report

By AL DEVNEY  
President, DPMI Property Management Inc.

Al Devney, president of Devney Property Management, Inc., can be reached at 684-6667. Excerpts of the property manager's report for the month of August 2002 are as follows.

### \$500 Reward Offered

The Bloomingtondale Special Taxing District is offering a \$500 reward for information leading to the arrest of vandals responsible for the destruction of Bloomingtondale community property including neighborhood directory signs and public benches in Bloomingtondale East. Call Deputy Pete Maurer at 635-8040.

### Irrigation

The Southwest Florida Water Management District authorized a variance for the

### Deed

From page 6

and enforceable contract between neighborhood residents.

As a resident of your neighborhood, it is your legal right and responsibility to identify, report and enforce compliance with your neighborhood's deed restrictions. This can be done in several ways.

First and foremost, your neighbor may not know they are violating the restrictions, so an informative introduction may be all that is necessary. If this is unsuccessful, the violation can be reported to the Bloomingtondale Homeowners Association. Some neighborhoods have their own mandatory association, but all are covered under the BHA.

A representative of the BHA will verify the violation

Elton and Bloomingtondale Village systems to be watered on Saturday instead of Friday; Brandon Irrigation repaired a defective pressure switch on the Elton system, a broken zone line and a defective rain sensor on the Rosemead system, and an electrical problem with several zones on the Garnet system; Thunder Irrigation revamped a portion of the Groveway system at the Allwood entrance; Brandon Irrigation checked all 26 systems and certified the timers and battery chargers were functioning properly; DPMI changed out all the batteries in our system — 24 9-volt rechargeable and two 3-volt batteries; DPMI replaced 31 spray heads, a rotor and eleven lights, and repaired a zone line.

### Miscellaneous

Boss of Gloss pressure washed and removed the rust stains on the wall on Springvale; Signs by Mineo

installed the Bloomingtondale Directory sign at the corner of Natures Way and Culbreath — it was destroyed 24 hours later by vandals; Hillsborough County sidewalk division repaired broken sidewalks on Bell Shoals, Greenhollow, Springvale and Natures Way from Culbreath to Cambridge Cove, about 50 percent of what the taxing district requested to be repaired in 1995 and again in 1998 — county staff said the project is completed for the year.

A car versus light pole and wall accident occurred on Culbreath at Erindale.

### Eat, Drink and Pitch Out The Window

In the land of eat, drink and pitch out the window, Mr. Devney picked up 19 bags of litter, two towels, two concrete blocks, two large boxes, four gloves, a VCR, a case of frozen pizzas, an otter and 42 cents.

# Register By Monday To Vote In November

A Gazette Report

Hillsborough County citizens who wish to vote in the November elections must register by Oct. 7.

You may register at any public library, the elections office at 2514 Falkenburg Road, the county school board, health department and courthouse, and the supervisor of elections office at 601 E. Kennedy Blvd. in Tampa.

For more information, visit [www.votehillsborough.org](http://www.votehillsborough.org) or call 272-5850.



## Make this your child's best school year ever.

The sooner Huntington steps in, the faster grades step up.

When it comes to helping kids with the new school year, no one does it better than Huntington. If your child struggles with homework, can't keep up with new classwork, or just wants to get ahead, call us. We can help. We can diagnose what is keeping your child from being his or her best and create a program of instruction tailored to his or her needs. Just a few hours a week can improve your child's skills, confidence, and motivation.



reading writing

math spelling

phonics study skills

confidence motivation

self-esteem

\$50 OFF Diagnostic Evaluation

Huntington LEARNING CENTER

Brandon 813-681-1500 Carrollwood 813-908-1000 Palm Harbor 727-937-8400

LETTERS? COMMENTS? QUESTIONS?

E-mail: [Letters@BloomingtondaleGazette.com](mailto:Letters@BloomingtondaleGazette.com)

268042

SAY YOU SAW IT IN THE  
THE BLOOMINGDALE GAZETTE



WE'RE READY FOR FALL

Tapestry Runners • Berry Wreaths  
Caswell-Massey • Trapp Candles  
• Accent Tables  
Beaded Table Toppers • Fountains  
Table Top Decor • Candlesticks  
Unique Baby Towels & Gifts



813-643-9390

Royal Oaks Shopping Center  
3240 Lithia Pinecrest Suite 101 • Valrico  
(Corner of Lithia Pinecrest & Bloomingtondale)  
Open Monday through Saturday 10am - 6pm



# Little League Season Runs Through Nov. 16



MACK AUSTIN/Photo

Becoming an umpire and helping young ball players and their families enjoy this great American experience can be a great decision.

## League Needs Umpires

By MACK AUSTIN

Where can you find the game of baseball being played with a real passion for the game, where the players aren't paid, the umpires are volunteers, and you sit so close you can see the sweat on the players' faces? Just visit any Little League park.

We have a fantastic Little League park right here in Bloomington that sets the standard for parks throughout the country. The key elements that make our park so great are the volunteers who coach and manage the teams, work the concession stands, prepare the fields, and those who call every ball and strike — the umpires.

Bloomington Little League's fall season is in full swing. It began Sept. 9 and runs through Nov. 16. The fields look great, the players are excited and the parents are taking a lot of vitamins.

One critical area in which the league needs the community's help is more umpires. Chief Umpire Bob Kominsky said, "Three years ago I saw the need (for umpires) and decided to do something about it. It has been great ever since. Until you've seen a game from behind the plate, you haven't really seen a game."

Kominsky said being an umpire takes personal com-

*"We want the kids to be safe and have fun. They're having the time of their lives."*

**BOB KOMINSKY**  
chief umpire,  
Bloomington Little League

mitment.

"We want the kids to be safe and have fun. They aren't high paid pros. They're having the time of their lives and they're working hard as team to win."

To be successful, they need someone in control to track everything that is going on and keep the game fair, safe and fun to play. There is no doubt that being an umpire is hard work, especially when you have to deal with parents that have never played the game or even been on a field.

But the memories and rewards of being an umpire cannot be bought. Your time is spent helping young people develop into confident, disciplined team players, skills that will be with them throughout their whole lives.

So now you know there is a need. Now is the time to help yourself while you're helping others. Become an umpire. Call Bloomington Little League at 684-8422 or visit the Web site at [www.bllhomeplate.org](http://www.bllhomeplate.org) for information.

## Community Meetings

The regular monthly meeting of the Bloomington Homeowners Association board of directors will be Oct. 7 at the community office, 3509 Bell Shoals Road.

Information: 681-2051 or [Bloomington.Homeowners@verizon.net](mailto:Bloomington.Homeowners@verizon.net).

The Bloomington Special Taxing District board of

trustees will meet 7 p.m. on Monday, Oct. 14 at the community office.

Information: 684-6667 or [BSTD@Bloomington-Gazette.com](mailto:BSTD@Bloomington-Gazette.com).

All meetings are open to the public; Bloomington residents are encouraged to attend.

SAY YOU SAW IT IN THE  
THE BLOOMINGDALE GAZETTE

# Ladies Host Tea Party at St. Stephen Church

## Event Open To Community

By LAURA FRAZIER

Ladies attending a tea party at St. Stephen Catholic Church this month will enjoy a variety of enticing teas, rich desserts, delicate finger sandwiches and soothing classical music.

But above all, event coordinator Diane Schoeffel said, they are sure to have fun.

The Ladies' Fall Tea will be

held at the church on Saturday, October 19 from 10 a.m. to noon. The event is open to all Brandon area women and girls.

"This is a great opportunity for grandmothers, mothers and daughters to make memories," Schoeffel said.

Individuals may attend on their own or with friends, and may also host a table for eight. Hostesses are invited to set their table creatively.

"We are planning a very eclectic grouping of 16 tables,

with themes ranging from angels and holidays to art deco and Disney characters," Schoeffel said.

The menu will feature a variety of hot teas, desserts, hors d'oeuvres, sandwiches and fruit. Peanut butter and jelly sandwiches and apple juice are available by request in advance for the littlest young ladies attending.

With scones and PBJ sandwiches side by side, the event is sure to be casually elegant, but with a few concessions to

tradition.

The group is delighted to feature the Stephanz family playing classic chamber music. In addition, Schoeffel said, "Hats and gloves are optional, but encouraged, just for fun."

The cost is \$15 per person, with proceeds going to St. Stephen Catholic School.

Seating is limited and reservations are required. For information or reservations, call Schoeffel at 684-2533.

## LaLeche League Meets Mornings, Evenings

By SUSAN BLAKE  
La Leche League of  
Brandon

The La Leche League of Brandon holds two open meetings each month to discuss parenting and breastfeeding issues with mothers and mothers-to-be. Accredited leaders are on hand and on call to provide advice and information. Grandmothers and babies are welcome to attend.

The group meets the sec-

ond Wednesday of each month from 7:30 to 9:00 p.m. in the community room at 207 Kingsway Road in Brandon, and on the third Wednesday of each month from 10:00 a.m. to noon at St. Andrews Church on Bloomington Avenue at Bryan Road.

This month's evening meeting will be Oct. 9. The daytime meeting is set for Oct. 16.

For information, call 685-1096.

## Church Craft Show Set For Oct. 12

A Gazette Report

The St. Stephen Catholic Church Craft Group will hold its annual craft show in the multi-purpose room at the church, 5049 Bell Shoals Road.

The event takes place Saturday, Oct. 12 from 10 a.m. to 7 p.m., and on Sunday, Oct. 13 from 9 a.m. to 12:30 p.m.

Crafts showcased will include fall and Christmas items.

Information: 685-9312.

## Clean-Up In The Works

A Gazette Report

The Bloomington Homeowners Association board of directors is coordinating with county officials a neighborhood-wide clean up in November.

Plans are in the works to provide either stationary or curbside pickup of hazardous and/or non-hazardous materials that do not qualify for regular trash pick up, such as old paint, tires, cast-off furniture and more.

Details will be published in the next issue of the Gazette. Visit [www.Bloomington-Gazette.com](http://www.Bloomington-Gazette.com) for updates.

## Mothers & More Seeks Members

A Gazette Report

The Brandon Chapter of Mothers & More seeks new members to participate in group activities for moms and children.

The group meets 7 p.m. on the first Tuesday and third

Monday of each month.

Activities include topical discussions, guest speakers, playgroups, "Mom's night out," and more.

For information call the group's new toll-free information line, (866) 841-9139, Ext. 1013, or e-mail [mothers-and-more@onebox.com](mailto:mothers-and-more@onebox.com).

## Trucks Or No Trucks?

Visit [www.BloomingtonGazette.com](http://www.BloomingtonGazette.com) for updates about the Hillsborough County Board of Commissioners' Oct. 2 review of the Lithia-Pinecrest Road truck route debate. The meeting was held after the Gazette's deadline.

## PIANO LESSONS

Specializing in Private Instruction for the Beginning Student

- Friendly, no-stress environment for children and adults
- Tailored to the goals of the individual
- Degreed and experienced

Phone: (813) 727-1039

E-mail: [kvm@tampabay.rr.com](mailto:kvm@tampabay.rr.com)



Call or e-mail for more information

274105

**Baton Twirling Classes**

At the Pole Barn  
11275 W. Bloomington Ave.  
All Ages and Skill Levels

1 Baton • 2 Baton • Flags  
Hoop Baton • Fire Baton

For information call  
June Bryan  
653-2199  
Dawn Gundlach  
684-6208

**CLASSES**  
WED.  
3:30 AND 4:30

Classes taught by past, state, regional & national champions. USTA, NIBTA





MACK AUSTIN/Photo

**New Signal On Lithia At Fish Hawk**

Fish Hawk Ranch developer Newland Communities will begin construction soon on a new traffic signal on Lithia-Pinecrest Road at Fish Hawk Boulevard. The addition of the traffic light, plus new turn lanes planned, should significantly improve traffic flow and safety at the busy and growing intersection.

**Parents Must Drill Teens About Battlefield of Life**

By SHARRON K. COSBY  
Wake-Up Call Inc.



Photo courtesy Randy Horton, Artisan Photographs  
Sharron and Dan Cosby, Co-founders of Wake Up Call Inc.

"Hup, two, three four, pick 'em up and give me more! Drop and give me 20! Quit your whining! Give me 10 laps around the parade grounds!"

Drill instructors are every recruit's nightmare. But the military uses drill instructors for a specific reason; to prepare soldiers for battle. Drill instructors are soldiers who have already tested the battlefield and know how to train fresh recruits in strategies that could save their lives. They know firsthand what doing battle is all about.

Parents are similar to drill instructors in that we have already done battle with our own adolescence and teen years, and we know what our children can expect. We are charged with the responsibility of preparing our children for the battle of life.

How many times have you said to our child, "When I was a kid...?" Sometimes our chil-

dren simply roll their eyes, yawn and say, "Yeah, and you walked three miles in the snow to go to school." But down deep, most kids enjoy hearing what their parents did as children.

We recently counseled a family and it was rewarding to witness the exchange between father and son as the father recounted stories of Vietnam. The son had no idea of what eh father had faced, because they never talked about it. They shared stories of the father's childhood and going to high school, and there was a visible softening in the son's face

as his father shared from his own experiences. It doesn't seem like much, but for this father and son, communication was a major stumbling block, and what was left of their relationship was rapidly deteriorating.

As parents, what are some strategies we can teach our children from our own battlefield experiences? We can teach them respect for others, the value of honesty and integrity, being a man or woman of their word. We can teach them the importance of family relationships and that in the end, it's usually family that stands beside you through thick and thin. We can share with our children experiences that were difficult for us and how we coped and worked through them. Parents can communicate about some of their own mistakes, how it made them feel, how they worked through them, and the life lessons learned from the experiences. Consistent open communication with our children will go

a long way to having in place a relationship that can weather many storms.

Our son has been clean and sober now for two years. He is one of the few from his treatment center graduating class who are still able to claim that victory. He attributes much of that success to the strong family support he has received. Many of the men in the program did not have support while in treatment, and certainly not after they got out and the majority of them relapsed.

Parents, we aren't called to be drill instructors in the strictest sense of the word, but we are called to be teachers and trainers for our children and to prepare them for the experiences of adulthood.

Dan Cosby, a substance abuse counselor at Overcomers Counseling Center and his wife, Sharron, are founders of Wake Up Call Inc and can help you learn more about teen and family substance abuse problems. Information: 626-5394.

**Help Wanted**

The Bloomingdale Gazette needs neighborhood volunteers to assist with the Bloomingdale Yard of the Month program. Volunteers select winning homes from among entries received by

the Gazette, photograph the house and deliver the yard sign and gift certificate prize to winners.

Information: 681-2051 or Bloomingdale.Homeowners@Verizon.net.

**Bloomingdale Yard Of The Month**

Nominate your friends and neighbors (or yourself) for the Bloomingdale Yard of the Month award.

Winners will receive an Ace Hardware of Bloomingdale gift certificate courtesy of the Blooming-

dale Homeowners Association.

Submit entries by mail to Yard, 3509 Bell Shoals Rd., Valrico, FL 33594, or fax to (813) 651-1129 or by E-mail to Letters@BloomingdaleGazette.com.

Your name and phone # ...

Nominee's name, address, phone # ...

Outstanding yard features ...

**Bloomingdale High Music Dept. Holds Fundraisers**

By MICHELLE COLESANTI & VICKI WIESE  
Rajun' Bulls Publicity Co-Chairs

great gifts for friends, family and teachers.

See any Music Department student for details and orders, or call Steve Dutch at 689-1164.

The twelfth annual Rajun' Bull Marching Band Barbecue Dinner will kick off homecoming weekend on Friday, Oct. 11, from 4:30 to 7:00 p.m in the cafeteria and on the patio.

A complete barbecue dinner from the Rib Factory will be served.

Baked goods will be served, and take-out orders are available.

Proceeds will support the Bloomingdale band program. Tickets are \$6 and may be purchased from any Bloomingdale Band student or by calling Steve Dutch at 689-1164.

Thank you in advance for your support!

BLGZND

**CLASSIFIED**

The Bloomingdale Gazette classified office is located in the Brandon News building at 1401 Oakfield Dr., Brandon FL 33511

TO PLACE AN AD	RATES	GENERAL POLICIES:	AD DEADLINE
call: Ashley Hager or Ruby Brooker at: 689-7764 or fax to: 689-9545	<b>SUPERSAVERS:</b> Private parties may run a three line ad free of charge for merchandise under \$250 (price must appear in ad). Not available to businesses. Other restrictions apply. Free ads must be submitted in writing, by fax or in person. Five ads per person per month on a space available basis. <b>RATES:</b> Five lines for \$7, additional lines are \$1.40 per line. Ask about our discounted rate available if you advertise in the Brandon News, Plant City Courier and Shopper or other Sunbelt publications. <b>HOURS:</b> Mon. - Fri. 8 A.M. to 5 P.M.	<b>CANCELLATIONS:</b> Cancellation numbers are issued at the time of cancellation. It is necessary you have it in the event of any misunderstanding or adjustments. Ad deadlines are applicable to cancellations as well. <b>ADJUSTMENTS:</b> Please check your ad for errors the first day it appears. Sunbelt Newspapers will not be responsible for errors, except to the extent of the cost of the first insertion, and then only for that portion of the ad that may have omissions of copy. Corrections of errors must be made within the above ad deadlines also. <b>CREDIT:</b> Some classified categories require payment in advance.	to place cancel or change an ad is <b>Friday, 5 P.M.</b> 1 week prior to publication.

**40 Cemetery Lots**  
BRANDON-2 lots, side by side, Hillsborough Memorial Gardens, Sect. 7, 32C Garden Of The Cross, \$1600 obo. 813-684-0896

**381 Part Time**  
MOTHERS HELPER needed for 1st graders. Tutoring, babysitting and/or clean-up. B'dale East. 655-8785

**392 Private Instruction**  
PIANO LESSONS All ages, all levels. Wkday & Sat. 685-2312, 643-9419.  
Tutoring. All ages, levels. 3rd math english algebra. 685-2312 643-9419

**402 Antiques/Collectibles**  
DEPT 56 Snow Village '81-'97, retired Disney village, North pole village '90-'97, Heritage Dickens village series '90-'95 813-651-4320

**404 Crafts**  
Craft Show Oct 12th. Central Baptist Church in Brandon. Vendor Spaces 12x12, \$26.75. Call 813-685-7595

**408 Stamps - Books**  
COINS WANTED Corbins Stamp & Coin. Estimates / Appraisals. 9a-4p. M-S. 813-651-3266. 108 W Robertson St Brnd  
Classified Ads Prices well within sight A selection that's just right!

**562 Campers & Travel Trlrs**  
25' Coleman 1999 pop up, sleeps 7, exc cond, canoe rack, bicycle racks, w/slide. \$6500 obo. 813-685-8532

**635 Motorcycles**  
HARLEY 2001 Softail Deuce, black, 2600 mi. V&H Propipes, ext warr. beautiful. \$17,400. 813-681-4743

**649 Automobiles For Sale**  
FORD 1999 Taurus SE, 24V 6 cyl. lthr. moonrft, 6 CD, new brakes, bat, tires, 80K hwy mi. \$6400 813-689-2154  
NISSAN 1999 Altima, GXE, fully equipped, 5 spd. silver/gray, well maintained, 76K mi. \$8500. 813-685-3549

**CLASSIFIED WORKS**

**You have many ways to place your classified ad in the Bloomingdale Gazette:**

- **by phone:** call Ruby at: 657-4517 OR Ashley at: 657-4518
- **by fax:** 689-9545, attention: Bloomingdale Gazette
- **in person:** The Brandon News, 505 Robertson St.
- **by mail:** The Bloomingdale Gazette, c/o the Brandon News, 505 Robertson St. Brandon, FL 33511

BLG3X3



# Bloomingtondale Gets Five-Star Service



with

*Luana*  
**RUSSELL**

Five-Star Service

### Homes Recently Listed In Bloomingtondale

- 2222 Eagle Bluff Dr ...\$264,900
- 2514 Bloomingtondale Ave ...\$224,900
- 409 Bloomingtonfield Dr ...\$174,900
- 1502 Carter Oaks Dr ...\$174,900
- 3909 Applegate Dr ....\$144,500
- 739 Fortuna Dr .....\$129,900

### Homes Recently Sold In Bloomingtondale

- 3905 Dunaire Dr .....\$159,900
- 3836 Cold Creek Dr ...\$169,900
- 3811 Polumbo Dr .....\$183,900
- 1422 Holleman Dr ....\$195,000
- 4533 Swift Cr .....\$202,000
- 3804 Northridge Dr ...\$295,000



**KELLER WILLIAMS**

REALTY

O F B R A N D O N

510 Vonderburg Dr, Suite 200, Brandon, FL 33511

**684-9500 or 685-8545**

Call Luana and discover the pleasure of five star service