

BUTLER



Delivered free to all
Homes in Bloomingdale.
Advertising Rates
Rates Available on
Request.

THE BLOOMINGDALE GAZETTE

A PUBLICATION OF THE BLOOMINGDALE HOMEOWNER'S ASSOCIATION

OCT 1984

VOL V, NO. 12

J. B. R. A.

**HEY ALL YOU TEENS OUT THERE LOOKING
FOR FUN-COME JOIN THE
BLOOMINGDALE RECREATIONAL ASSOCIATION**

The J.B.R.A. is an activity service group for kids 12 to 17 years of age. There will be activities such as: car washes and raffles to raise money for functions such as: canoe trips, Busch Gardens, or what ever our group comes up with. We would like your ideas and opinions...

For more info. Call Kendra at 689-4842

DATE: October 13, 12:30 p.m.

**LOCATION: 3907 Briar Lake Dr.
FOR OUR FIRST MEETING.**

BHA GENERAL MEMBERSHIP MEETING

**SPUD CLEMENTS AND MARK PROCTOR
DEMOCRATIC AND REPUBLICAN
CANDIDATES FOR THE STATE LEGISLATURE
ARE THE FEATURED SPEAKERS**

**CIRCLE M NURSERY RANCH AND SCHOOL
OCTOBER 17, 1984 AT 7:30 PM**

HOMEOWNERS ASSOCIATION DIRECTORY

President.....	Brenda Manning	4019 Eastridge	681-2424
Treasurer.....	Gloria Dyke	3802 Windtree Ct	681-1713
Secretary.....	Tom Kemper	621 Ephrata	681-5364
Sgt of Arms.....	Dave Burke	627 Ephrata	689-0336
Director.....	Les Butler	3816 Cloverhill	681-5367
Director.....	Bob Knott	4039 Eastridge	685-0011
Director.....	Art Hallows	3806 Sweetleaf Ct.	681-5199
Director.....	Andy Pafitis	4036 Paddlewheel	685-1307
Director.....	Chris Pheils	710 Caliente Dr.	681-9026
Director.....	Erral Whitfield	403 Bloomingfield	681-7462
Director.....	Wynella Wilson	3714 OrangePointe	681-6011

BHA GAZETTE

Circulation ...	1175+
Editor.....	Les Butler 681-5367
Assistant Editor.....	Bob Knott 685-0011
Advertising Mgr.....	Frank DeVito 685-4818
Circulation Mgr.....	Sandy Hallows 681-5199
Articles/Letters to the Editor	
BHA Gazette	
3816 Cloverhill Ct.	
Brandon, Fl. 33511	
Copy deadline 20th of each month	

Advertising Copy	
BHA Gazette	
624 Ephrata	
Brandon, Fl 33511	

JEANNE'S HALLMARK SHOPS

LITHIA SQUARE

689-7993



PARSONS VILLAGE SQUARE

685-5584



U.S. POST OFFICE
AT LITHIA SQUARE

COMPARE

State Farm vs. Your Insurance
on
Auto, Home, Health
Life, Business

Are your coverages up to date?
Are your premiums competitive?

Contact

GREG RADCLIFF

677-4433



State Farm Insurance

LAWN SERVICE
SPRINKLERS

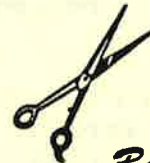
HOUSE PAINTING

FALL IS COMING
VACUUM AND REMOVE LEAVES

HAROLD BARBER
715 CALIENTE DR.

689-9684
963-4003

FAMILY HAIR CARE



*Mr. Willy's
Barber & Styling Shop*

STYLE CUT.....	\$7	CHILDREN.....	\$5
SHAMPOO, CUT & BLOW DRY.....			\$10
REGULAR HAIRCUT.....			\$4
PERMANENT.....			\$25 & UP

No appt. necessary

LITHIA PINECREST RD.
BLOOMINGDALE AVE.

685-3361

Presenting Complete Service
by



Gloria Jean's Interior Designs
DRAPERIES - BLINDS - SHADES - WALLCOVERINGS
VERTICALS - UPHOLSTERY - CARPET

RESIDENTIAL - COMMERCIAL
112 N. PARSONS AVE.
BRANDON, FLORIDA 33311

Phone (813) 681-2018

BHA NEWS

Candidates for the District 4 County Commissioner's seat spoke at BHA's September meeting. Due to an unexpected illness Ms. Sandra Black was unable to attend and Mr. Ray Reagan had declined our invitation because of prior business commitments. Mr. George Parker, a newspaper and publishing executive with agricultural interests in East Hillsborough county, cited the problems of uncontrolled growth in Brandon. He wants to get control of the growth and redirect towards the betterment of the entire community. Mr. David Jones, a former patrolman and detective in the Sheriff's Department, is vitally concerned with improving law enforcement and representing the residents in Brandon. He considers that the county is paying more attention to North and West Hillsborough and ignoring East Hillsborough. Mr. "Big Jim" Selvey feels sorry for the problems of NorthWest Hillsborough, but believes unless something is done Brandon's problems will be even greater. He sees the County Commission as a body responding to crises with after the fact solutions. He cited a U.F. study which predicted 400,000 more people in Hillsborough County by 2000. He said the only open space left is in East Hillsborough. Better planning at the county level is his solution. The last speaker was Mr. Gary Scarboro, a former employee of Hillsborough Planning Commission. Fifty-six people move to Hillsborough County each day and this growth concerns Mr. Scarboro. He is experienced in developing growth management policy for the county with the knowledge and commitment to design and implement rational policies. He offered his record in planning and public service as testimony to his qualifications for office. Brenda Manning, acting as President, invited the residents to ask questions, but there were none and the candidates left with our thanks.

Mr. S. L. "Spud" Clements, District 62 representative to Florida House of Representatives, was in the audience and at the request of the residents spoke to the group. He recounted his record in the House and service to the district. Spud also responded to a question about the Special Taxing District referendum saying that with "home rule" in disarray it was a mistake for the County Legislative delegation to disapprove the Bloomingdale STD bill. You can hear both Mr. Clements and his opponent speak at the October meeting on Wednesday, October 17. This is your chance to be both an informed voter and express your opinions and get answers to your questions.

Keri, Kendra, and Kevin Keiser proposed that BHA assist them in organizing a junior association for the teenagers in our community. Our young people want the Teen version of BHA to be a service organization raising funds with yard work, car washes and other activities to support social functions. The BHA members present expressed strong support for the idea. How about it, Teens? Are you willing to work for yourselves. Give the Keiser's a call. Their phone number is 689-4842.

Gloria Dyke announced that BHA made \$2037.94 profit from sales of \$3627.22 during the Balloon Festival. This was a 56% net profit compared to last year's 50 % profit \$1238.94. Again, thanks to everyone to make the Coca-Cola booths such a huge success. Gloria also announced that we can use Center Place for our Christmas Party and asked for assistance in organizing the party on December 21.

The Board of Directors met on September 25 at Gloria Dykes. Christmas party plans and the Gazette were the important items on the agenda. Because our community is growing so rapidly, the Gazette has become an expensive proposition. Last month we printed 1200 copies at a cost of \$432.00. Advertising revenue covered 57% of the cost. If we were to eliminate discounts for members and advertisers who purchase several months at a time



BERNIE'S PEST PATROL

1420 LONGWOOD LOOP
TAMPA, FLORIDA 33619
PHONE 826-8447

"Bernie's is Better"

PROFESSIONAL SERVICE
AT AN AFFORDABLE PRICE
NO INITIAL CHARGE!*

FIVE YEARS EXPERIENCE
LICENSED, INSURED, CERTIFIED
MONTHLY PEST CONTROL
FLEA CONTROL
TERMITE CONTROL
24 HOUR ANSWERING SERVICE
CANCEL SERVICE ANYTIME

MENTION THIS AD!

*Although there is no initial charge, you do pay for the first month's service (\$13.00 per month).

PAT & MIKE'S HWY. 60 EAST BRANDON NURSERY

CITRUS — PALMS
LANDSCAPING

HIGHWAY 60 - 1/2 MILE EAST OF KINGSWAY ROAD
P.O. BOX 706, BRANDON, FLORIDA 33511

Phone (813) 689-2560

OUR PALMS ARE ON SPECIAL
WHILE THEY LAST

HUNDREDS TO CHOOSE FROM
DON'T GET LEFT OUT

BRING THIS AD AND GET A

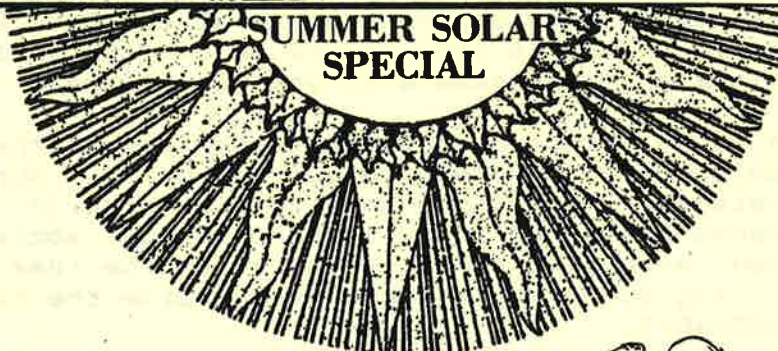
**5%
DISCOUNT**

SHADE TREES
AVAILABLE

GEODESCO IS RECOMMENDED BY
Mr. and Mrs. Frank DeVito
Mr. and Mrs. Bill Wheeler

Mr. and Mrs. Tom Kemper
Mr. and Mrs. Jerry Riley

LET
THE
SUN



WORK
FOR
YOU

Question IS YOUR POOL COOL?

Question IS YOUR SPA BLAH?

Question DO YOUR JACUZZI'S HAVE THE BLUESIES??

ANSWER:

Solar Makes Cents

WE HAVE THE SOLUTIONS TO YOUR WATER WOES. SOLAR
HEAT YOUR POOL, SPA AND JACUZZI.

CALL TODAY FOR INFORMATION WITHOUT OBLIGATION

681-8944 or 681-9081

GEODESCO

109 S. PARSONS — BRANDON

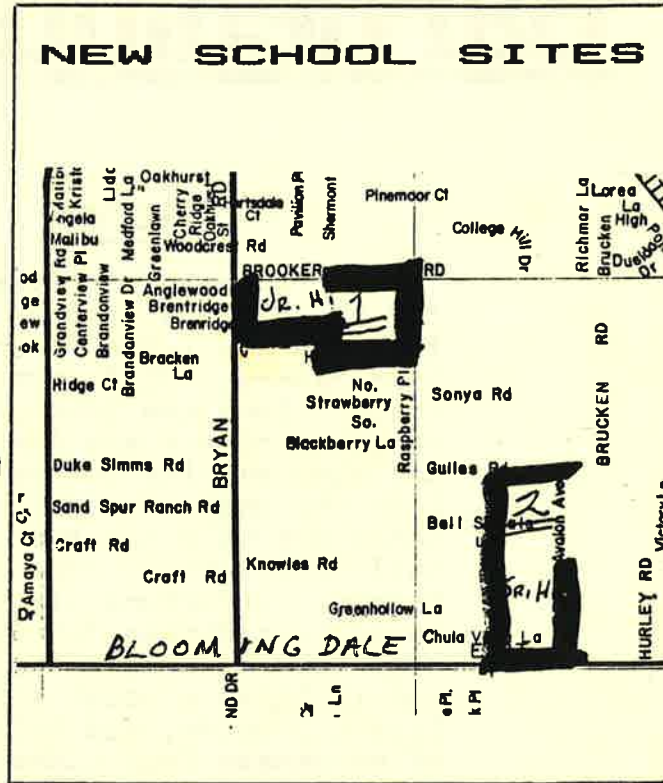
AFFORDABLE
FINANCING
AVAILABLE
NO PAYMENT
TILL 1988

CALL
TODAY
AND SAVE

BLOOMINGDALE AT LARGE

by Gloria Dyke

Believe it or not, it's time to start planning our Christmas party. Heading the committee for this years party will be Chris Pheils, Wynella Wilson and myself. We want and need volunteers, ideas, and donations. We were very lucky to get Center Place for Friday, December 21, 1984. We haven't set a price on the tickets, yet. Our annual Christmas Party is not a money making project, but we do like to cover expenses. The price of the tickets will depend on you. One idea is BYOB to reduce bartending and liquor costs. BHA provides the "set-ups" and ice. Our main problem is food. We want to know if you would like a buffet or just h'orderves. For entertainment, we will have a DJ for your dancing and listening pleasure. We could use donations for door prizes. If you know a merchant or you have plants, crafts, or liquor to donate. Please let one of the committee members know. Teens are invited to the Christmas Party with their parents.



Christmas is very important to children, and we want to invite Santa Claus to a breakfast with Bloomingdale's little ones. But we need some of Santa's helpers to get him there. Please call me to get the breakfast or children's Christmas Party organized.

Sonny Palomino sent us a nice letter thanking BHA for the opportunity to meet with the residents. He also sent us a map showing the location of the Jr. and Sr. High Schools planned for South Brandon. Planning for the Junior High is well along and some contractors have already been approached for bids. Sonny offered his assistance to BHA in our effort to maintain and improve the quality of education in our area.

BHA MEMBERSHIP APPLICATION 1985

Name _____

Spouse's Name _____

No. of Children _____

Ages _____

Address _____

New Resident __ Renewal __



BLOOMINGDALE HOMEOWNERS ASSOCIATION
 P.O. BOX 918
 BRANDON, FL 33511

\$20.00 PER YEAR

**** Please Print *****

Gardening

6
with Eric Wilds

PALMS IN THE FLORIDA LANDSCAPE

This month I'd like to talk to you about selecting palms for the Florida landscape. There is a wide variety of palms that are available for sale at retail nurseries and through landscapers. Different palms have different uses in the landscape. Some are large growing and require full sun for best results, others are smaller and may do best in shade. There are also varying degrees of cold hardiness.

Over the past twenty-five years in Florida the most popular landscape palm has been the "Queen" or "Cocos" palm. This tall (25-30 ft.), graceful palm with its drooping, feathery fronds, unfortunately must now be considered marginal as far as cold-hardiness for our area. This past winter was exceptionally hard on them. The cocos palm is best planted in full sun and it likes a moist soil with plenty of organic nitrogen. Like all palms, and this is important, it requires feedings of manganese four times a year along with a complete plant food.

Another tall palm for the full sun is the native Florida Sabal palmetto or cabbage palm. It is also suitable for shade. This palm is highly variable in appearance and stature, ranging from 20-90 feet in height, with the trunk sometimes bare and sometimes covered with the old leaf bases. Excellent in clusters of three and five as a freestanding yard specimen, this palm is ideally suited for our area.

Another suggestion for a large palm is the *Butia capitata* or Pindo palm. It ranges in height to 25 feet, but its trunk can be 20 inches thick and its appearance is bushy and massive. The leaves are gray-green in color and arch stiffly back towards the trunk. Very hardy to cold, and to anything else, I highly recommend them for use in the full sun.

A palm suitable for shade or sun and a favorite of mine is the Florida needle palm, *Rhaphidophyllum hystrix*. This palm is medium in height (to 10 feet) and forms a dense cluster of dark green fan-shaped leaves. The black trunk is coarse in appearance with long spines which give it its name. It is completely cold hardy and requires a rich, dark, moist soil. Unfortunately, this palm is hard to find.

Rhaphis palms, or Lady palms, are clustering palms with slender darkly fibrous trunks and dark green leaves in a graceful, hand-like shape. They are strictly for the shade, turning yellow in the sun. They are very cold hardy. Rhaphis palms can grow to 15 feet though a 10 foot clump is more typical. Some nurseries sell a dwarf variety, but it has been noted that rhaphis perform differently according to location and this makes many dwarf types undependable. Lastly, raphis are expensive, but well worth the expense.

GARDENING (CONT.)

The last palm I'll offer you is the *Chamadorea macrospadix* or Mexican bamboo palm. There are many bamboo palms sold for indoor use, but this particular species is more cold-hardy to our area and thus can be used outdoors. It loves the shade and grows in clusters to 12 feet. Its appearance is graceful with drooping, fishtail-shaped leaflets and a slender green trunk. The leaves are wider and less split than those that are used indoors. This palm needs protection from wind and sun but will take freezes that kill ligustrum! Its uses are similar to *Rhaphis* but it is much less expensive.

This has been a brief introduction to palms in the Florida landscape; there are many more to choose from. Keep in mind that no other type of plant conveys an instant feeling of the tropics like a palm.

Till next month, Happy Gardening!



**ERIC WILDS
LANDSCAPES OF
ENDURING BEAUTY**

10 years of Florida experience with a working knowledge of native plants, combining aesthetic sensibility with sound horticultural practice.

Free estimates Reasonable rates

685-3774

Located in South Brandon.

Free Complimentary Facial To Bearer Of This Card

Mary Kay
COSMETICS
Independent®

Angela Stringer

Professional Beauty Consultant 523 Sandy Creek Drive
(813) 681-9467 Brandon, FL 33511



HARMONY
PROFESSIONAL COLOR ANALYSIS

Cosmetics
Wardrobe Consulting
Career Training

ALVIA NELSON
(813) 685-8501



W. W. CAKES AND CATERING
COMPLETE CATERING SPECIALIZING IN:
• Parties • Cakes
• Weddings • Dinners
• Buffets

W. Wilson
813-681-6011

3714 Orange Points Rd.
Valrico, FL 33594

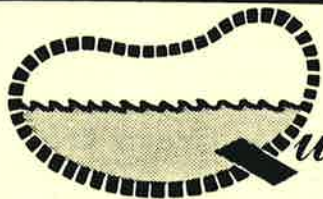
ROLLINS

PROTECTIVE SERVICES

RANDY R KURTH

Security Consultant

Rollins Protective Services Company
5031 Savarese Circle, Tampa, FL 33614
Tampa 813/885-5881, Clearwater 813/821-1448
Sarasota 813/365-0358

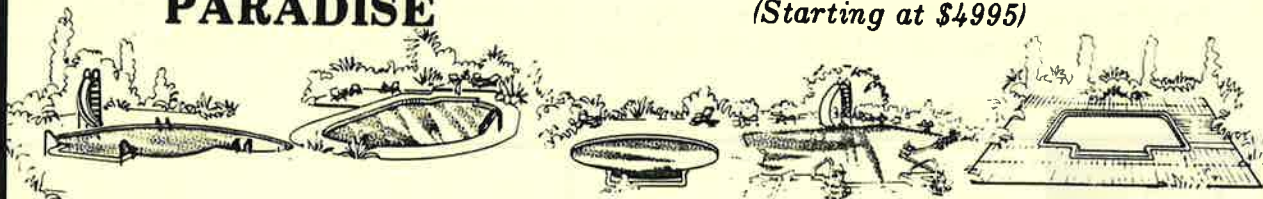


Quality Pools

INTRODUCES

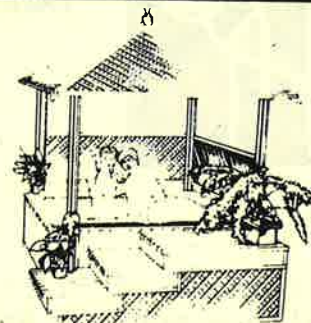
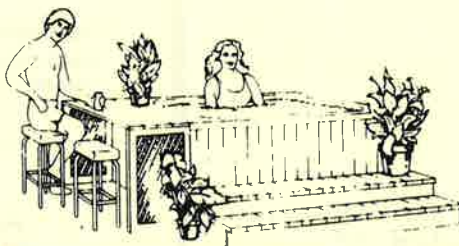
AFFORDABLE PARADISE

ALL UNDER \$6995 COMPLETE
(Starting at \$4995)



Shown here are 5 of our most popular shapes. Seven other designs are also available. All of these pools are built with totally non-corrosive materials carrying a lifetime warranty.

AFFORDABLE SPA'S and GAZEBO'S



AFFORDABLE "Custom Built" CONCRETE POOLS

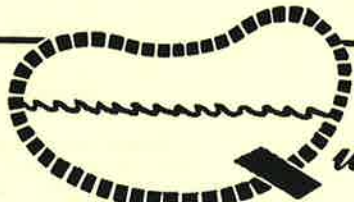
Stop In and See the Largest Collection of Swimming Pools on Display in the Brandon Area



Guitar shaped swimming pool with decking, river rock and separate spa.

ASK ABOUT OUR SOLAR HEATED SWIMMING POOLS

MEMBER



Quality Pools & Spas

1500 N. PARSONS AVE. • BRANDON • 689-8111

PACIFIC POOLS
The Affordable Paradise



YOUR PET'S HEALTH:**Intestinal Parasites**

By Dr. Margaret Wissman

Worms, abundant and common in Florida, can be a major health problem for your dog. Worms can cause vomiting, diarrhea, emaciation, poor coat condition, distended abdomen, and lowered resistance to disease.

Adult worms live in the dog's intestine, where they attach themselves to the intestinal wall to feed and reproduce. Female worms produce large numbers of eggs, which pass out of the intestine with the feces. Once on the ground, the eggs enter a stage that may be infective and can be harmful to other dogs who come in contact with the eggs by walking in, or sniffing at the infested area.

In a pregnant dog, roundworm or hookworm eggs can develop into larval forms in the intestine; then migrate to the uterus or mammary glands. If passed on to the puppies, the larvae will cause an adult worm infestation while the puppies are very young.

Diarrhea is one of the most common signs of worm infestation. Have a fecal specimen examined by your veterinarian should this occur. Most worms are not visible to naked eye, and over-the-counter wormers may be ineffective or dangerous.

Roundworms are spaghetti-shaped and about five inches long. These are most commonly found in puppies and give the infested pup a pot-bellied appearance. Larval forms of the worms migrate throughout the puppy's body, causing many serious complications that include stunted growth, vomiting, diarrhea,

dehydration, and pneumonia. Check any female dog before breeding her to make sure she is free of worms. Deworming involves at least two treatments to ensure that all migrating larvae are killed as each cycle is completed. Children who eat dirt may be infected with roundworm larvae, which migrate through the body, causing a condition known as visceral larval migrans.

Hookworms attach to the walls of the small intestine where they live by sucking blood. Hookworm infestation is characterized by lethargy, poor appetite, pale gums, and a black tarry or bloody stool. In puppies, larvae can be taken in from the mother's milk to cause early infestation. Anemia and even death can occur in



MICHAEL S. MITCHEL, D.V.M.
MARGARET WISSMAN, D.V.M.

Suncoast Veterinary Clinic

101 S. St. Cloud Avenue
Valrico, Florida 33594
Telephone: 889-1228

THE GROOM ROOM

PROFESSIONAL PET GROOMING

with that

"Personal Touch"

Call Carolyn at 685-0011

• your neighborhood groomer •



YOUR PET'S HEALTH: continued
 infested pups. Hookworm larvae can penetrate through the skin. An early sign of a hookworm problem may be a cough, since the migration cycle of these worms carries them to the windpipe, where they are coughed up and swallowed, and then enter intestines, where they do the damage. Detection and treatment of hooks is very important in this area, because the ground never becomes frozen, which would kill infective larvae. Worms are rarely visible in the feces, the eggs must be observed microscopically. You should have your dog's feces examined 2-4 times per year in Florida.

Hookworm larvae can penetrate through human skin, as well, and cause a condition called cutaneous larval migrans, which is very itchy and annoying.

Whipworms live in the large intestine and cecum (like our appendix) and cause severe bowel inflammation. The dog will develop diarrhea, often the appetite decreases, and sometimes vomiting occurs. The eggs persist in the environment for long periods of time, so it is best to keep your dog away from areas contaminated with dog feces.

Tapeworms are acquired when your dog eats a flea while biting and chewing. Adult tapeworms leave clearly visible segments in the dog's feces, or you may see them crawling on your dog or in his bedding. They are about a quarter inch long to a half-inch long, and look like grains of rice (sorry about these comparisons the food!) These are the most visible worms, but the least dangerous. They should be treated, but don't panic if you see them. It's the one's you can't see that should worry you.

HOME OWNERS **BUILDERS**

ANDERSON & SON
NURSERY & LANDSCAPING
 1401 N. Tamiami Tr.
 Ruskin, 33670
 P. O. Box 1414
 Phone: (813) 648-4184

FLORATAM SOD & PLUGS
DELIVERED 160 sq. ft.

• HOME GROWN • SPOTTED WITH FORKLIFT • 400 sq. ft. ON PALLET
 100 ACRES • SAND BASE NOT PEAT

QUALITY - WEED FREE - DEPENDABLE
BUY WHOLESALE & SAVE
"NEW BOYS ON THE BLOCK"

SOD DEPOT **TRUCKERS**

CLIP 'N SAVE **CLIP 'N SAVE**

COLOR
TV REPAIR SERVICE



WE REPAIR ALL MAKES AND MODELS

RADIO DISPATCHED FOR QUICK SERVICE

ALL HOUSE CALLS \$ 9⁹⁵*

GUARANTEED
 15 DAYS HOUSE CALL
 30 DAYS LABOR
 90 DAYS PARTS INSTALLED

10% Parts Discount To SENIOR CITIZENS

\$5 OFF! ON REPAIRS ON ANY TV SET BROUGHT IN W/COUPON ONLY

SR 574 BRANDON TV

McDonalds

SR 60

MONDAY THRU FRIDAY 8-5

BRANDON

TV

CALL NOW 685-6831

503 S.R. 574

WE SERVICE ALL of EAST HILLSBOROUGH
 NO ADDITIONAL IN-HOME LABOR CHARGE
 WE NOT ONLY WANT YOU
 WE WANT YOUR RECOMMENDATION



REAL ESTATE FACTS

by: **Ted A. Keiser**

BROKER - SALESMAN
 Bloomingdale East Resident
 3708 Casaba Loop
 Home: 689-4842

Sorensen &
 assoc. inc. **REALTOR**
 165 W. Robertson St.
 Brandon, Fl. 33511
 Office: 681-3711

⇒ "CONGRATULATIONS" to my lovely wife, Chris, who is now a Realtor-Associate, and my partner in business as well as my partner for life. No man could be luckier than I!

* * * * *

"ARE YOUR DUCKS IN A ROW?" -- You've talked about it, and you're ready to buy a home! You chosen a professional realtor to help you buy a home, but you don't like having to answer those questions a realtor is likely to ask. Why do they have to do that anyway? Keep in mind that a realtor must know the needs of a prospective buyer in order to locate suitable properties, so expect him to ask about desired location, number of bedrooms, preferred price range, etc.

The professional may also ask some money questions relative to your present income, downpayment available, employment stability and current debts. These are not intended to be personal questions, but are necessary for the realtor to determine the availability of appropriate mortgages, and the probable maximum amount for which you, the buyer, might qualify. Timing in the purchase of your new home is also essential. Thus, you may be asked why you are moving, and when you must be in your new home.

So, now your realtor has helped you determine the best source of financing and the approximate downpayment requirements to fit your budget.

You have been living in a rental home, so you have no house to be sold first. You have been saving every month and have the needed downpayment in the bank. Your bills have been paid on time - your credit is excellent. Your jobs are secure and you're expecting a raise next month. You have your ducks in a row! Or do you?

Sometimes, there's one little duck who hesitates to get in line. That duck's name is "COMMITMENT". You see, in order to effect the purchase of any real estate there are some affirmative steps which must be taken. Once a house has been selected, the first two steps are to supply an "earnest money" deposit and sign an "agreement" to purchase the house. In other words, you must be ready to commit. Once you've found the perfect place for you, don't hesitate!

You can actually enjoy additional benefits by going out of your way to demonstrate your firm committment to a seller. For example, by offering a higher than expected earnest money deposit, you may be able to win some unexpected concessions on price or terms. Sellers recognize the value of prospective buyers who mean business! A seller will generally give stronger consideration to an offer accompanied by a reasonable sum of money as opposed to an offer backed by little cash.

If you want to purchase a home, but feel 'out-of-touch' with what's happening in real estate in this area, call a real estate professional. There's no obligation and you will be glad you got your ducks in a row!

LEARN HOW TO PROTECT YOUR HOME FROM BURGLARS

by Cliff Weinrick

Recently, we have added a half dozen blocks to our neighborhood crime watch program. Thanks, without your interest and support, a Neighborhood Watch is ineffective. We are having a Neighborhood Watch meeting on October 9 at 7:30 PM in the Bloomingdale Fire station on Bloomingdale Avenue. Deputy Earl D'Avignon, Hillsborough County Sheriff's Crime Prevention Department, will present a movie and program on protecting yourself, your family, and your home from criminals. Everyone in Bloomingdale is invited. Show your support for our Neighborhood Watch by making it a point to be there. It's your home!

BHA NEWS continued

noticed some differences in the format, I am dropping the calendar and using more of the cover page to cut costs. We are still having problems with our distributors. Your friends and neighbors want to see the Gazette too. Please make a special effort to get the paper out as soon as possible. Also, don't deliver to empty houses and return all extra copies to Sandy for our newest residents. We would like to know how you feel about the Gazette. Among the options: Distribute only to BHA members; Reduce the size to 4 pages and eliminate advertising; Raise advertising rates and eliminate discounts altogether. It's your community.

Don't forget to come to the general membership meeting and hear the candidates for State Legislature. MEETING IS AT THE CIRCLE M NURSERY SCHOOL AND RANCH AT 7:30 PM, WEDNESDAY OCTOBER 17, 1984.

LETTERS TO THE EDITOR

Dear Editor (an adendum to C.F. Mowery)

At the first BHA meeting, I attended last fall, I raised my hand to volunteer for almost everything that came up--including the Gazette, I am a qualifiied newspaper person. My husband panicked and finally kicked me in the shins. I got the message, but not before I had us on the mobile watch and my signature on more than one piece of paper. I sat by the phone for weeks and all to no avail -The mobile watch was glad to have us-we enjoy it-but apparently no one else did. And so the point, dear BHA is not to complain about lack of volunteers. It would seem you have a good "in-house" thing going. Keep up + good work Skip/your letters are great and thought provoking.

ELIZABETH DRAWDY

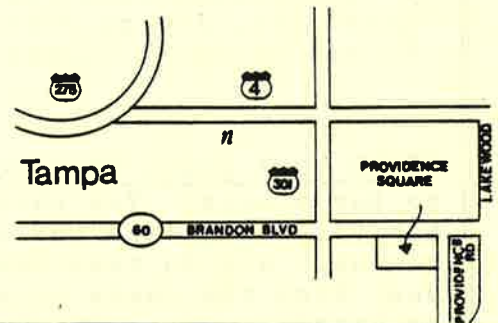
Editor's Note: Mrs Drawdy has attended only one meeting of BHA



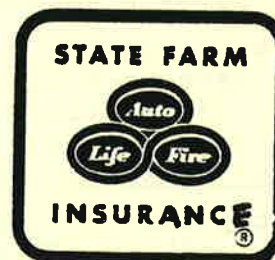
The Finest in Specialty Foods and Wines

1919 West Brandon Blvd.
Providence Square Shopping Center
Brandon, Florida 33511

(813) 681-9125



"I back the family insurance I sell with good neighbor service. Call me."



EVERETT NOLTE
INSURANCE AGENCY INC.
EVERETT E. NOLTE
Agent
607 W. Robertson St.
P.O. Box 1167
Brandon, FL 34299-1167
Bus.: 685-5623

*Like a good neighbor,
State Farm is there.*

State Farm Insurance Companies • Home Offices: Bloomington, Illinois

CLASSIFIED

WELCOME NEIGHBOR: Newcomers to the area receive free gift packet from our local merchants. We would like to meet you and welcome you to your new neighborhood. Please call "WELCOME NEIGHBOR" 645-3153 or 681-6853.

FOR SALE: AKC SHIH TZU Puppies. Elegant and devoted pets, reasonable. 689-7686

MUSIC LESSONS: Piano and Trumpet, reasonable rates. Call Carol or Robert Romanski, 689-5114.

DOTTIE D's CAKES AND DECORATING: for all occasions-Birthdays to Weddings, etc. Just Call 685-4818.

QUILTED ITEMS: Quilts, wallhangings, placemats, napkins, vests, pillows, tablecloths, Christmas items, etc. Makes great gifts. All are made to your specifications. Call Mitzi at 685-7430.

BABY SITTER: Will Babysit Child age 3-5. Fenced yard. Full-time \$12.00 a day. Call 685-0885

EXPERIENCED PIANO TEACHER: Resides in Bloomingdale. Now accepting students. Member of National Guild of Piano Teachers. Call 685-7395, anytime and ask for Dannie Morrison.

AVON PRODUCTS: Are you interested in buying or selling Avon products. Call Fran at 685-5764.

VICTORIAN LOOK CROCHET: Place your order for Christmas. Baskets, keepsakes, Christmas angels, snowflakes, tree decorations, etc. Custom Crocheting by Joyce 685-3013.

TUTORING: Qualified, certified teacher with Master's degree; elementary level-- all subjects, secondary -- English, Speech and other liberal arts. Call Tamara 685-4916.

LAWN MOWER BLADES SHARPENED: Call Ted Fligel 681-6971.

TUTORING: Do you need expert tutoring in Chemistry, Mathematics and Spanish. High School and College level. Call Susanne at 684-0183.

FOR SALE: 9 mo old silky Terrier. Male, housebroken. Proof of Immunization. Good Pet. \$50.00 . 681-7752

LOST: 6 year old Tabby cat, greyish brown and black stripes, very long haired, wearing a white flea collar. Reward offered. Call Linda 685-5814.

FOR SALE: Swingset, good condition, \$40.00, call 684-2105.

BABYSITTERS

Kimberlee Ramsay, 14,
681-3329, Certified
Missy Carlin, 16,
689-1496

Keri, 15,
689-4842

Kendra, 14
689-4842

Tina Graves, 17
681-5501

Pam Greeley, 24,
112 Bloomingfield Dr.
681-9306

Scott Travis, 14,
685-2196, \$.75 @ hr

Pam Reeves, 13,
681-8861

Bill Reeves, 16,
681-8861

Julie Cook, 13,
681-5465

Michelle Jernigan, 13,
685-4150

YARDWORK

Kevin,
685-0011

Scott Frey,
681-3739

Alex Algarin,
689-3127

Don -- reasonable
685-4273

Martin, 18, strong will
do any work
685-1843

Matthew -- lawnmowing,
reasonable prices,
dependable

685-3503

Shawn -- lawnmowing
685-2635

Bill Reeves, 16
681-8861

CLASSIFIED AD POLICY

Call Frank DeVito 685-4818 to place an ad

Classified AD's\$ 1.00

Business Card Ad's.....\$ 4.00

Babysitting Listing.....\$ 1.00

Children under 18 Free

Lawn Service/Yard Work\$ 1.00

Children under 18 Free

Classified Ads in the
GAZETTE are still the
best bargain. 1175 +
homes covered every
month.

WHY PAY INFLATED PRICES?

THE NU Discount Carpet Cleaning

OFFERS EXPERIENCED PERSONNEL,
DEPENDABILITY, AND GUARANTEED SERVICE

- Deep Steam Cleaning from Truck-Mount Unit
- We Move and Replace All Furniture
- Licensed, Bonded and Insured



Would You Let This
Baby Crawl On
Your Carpet?

\$59⁹⁵

WHOLE HOUSE SPECIAL

*Includes 5 Rooms & Halls. Additional Rooms \$8.00

Call **684-1322** For Appointment

MONDAY THRU SATURDAY *** 10:00 AM TO 6:00 PM
BLOOMINGDALE RESIDENT AND MEMBER OF HOMEOWNERS ASSOC.

*"THE BEST POSSIBLE SERVICE
AT THE MOST REASONABLE PRICE"*