

Provided FREE of charge to the subdivisions of Bloomingdale and Heather Lakes as a service of the Bloomingdale Homeowners Association, Inc.

The CIRCUS is coming to Bloomingdale Park West! See page 5

All Area Classifieds are on Pages 2-3 in Section 2

The Bloomingdale Gazette

Vol. III No. 9

Published by the Bloomingdale Homeowners Association, Inc.

September 1990

Sign up now for the Flea Market and make your reservations for the Picnic

Everyone, Bloomingdale Resident or non-Bloomingdale Resident, is cordially invited to attend the September 22, BHA Flea Market and Family Picnic.

Your day will start at 10 a.m. when the Flea Market opens to customers. All desserts for the always spectacular dessert contest are due by 11 a.m. Judging will begin at 11:30 with winners announced at 12 noon.

Children's games with prizes for their efforts are from 12 to 1 with professionals from the Parks Department leading the way. Then come and eat at the BHA food tent from 12 noon to 3 p.m.

And on top of all of this, you can purchase raffle tickets for our one-time per hour prize giveaway. The grand prize goes at 4 p.m. and is only open to booth vendors.

So don't miss out! Send in your booth reservation now!

Types and rates are as follows:

	Open Rate	BHA Rate
Commercial Booth	\$75	\$50
Garage Sale Booth	\$35	\$25

Commercial Booth
This includes craft sales, business products, an entire organization, food sales, or anything that is not used merchandise for a garage-sale

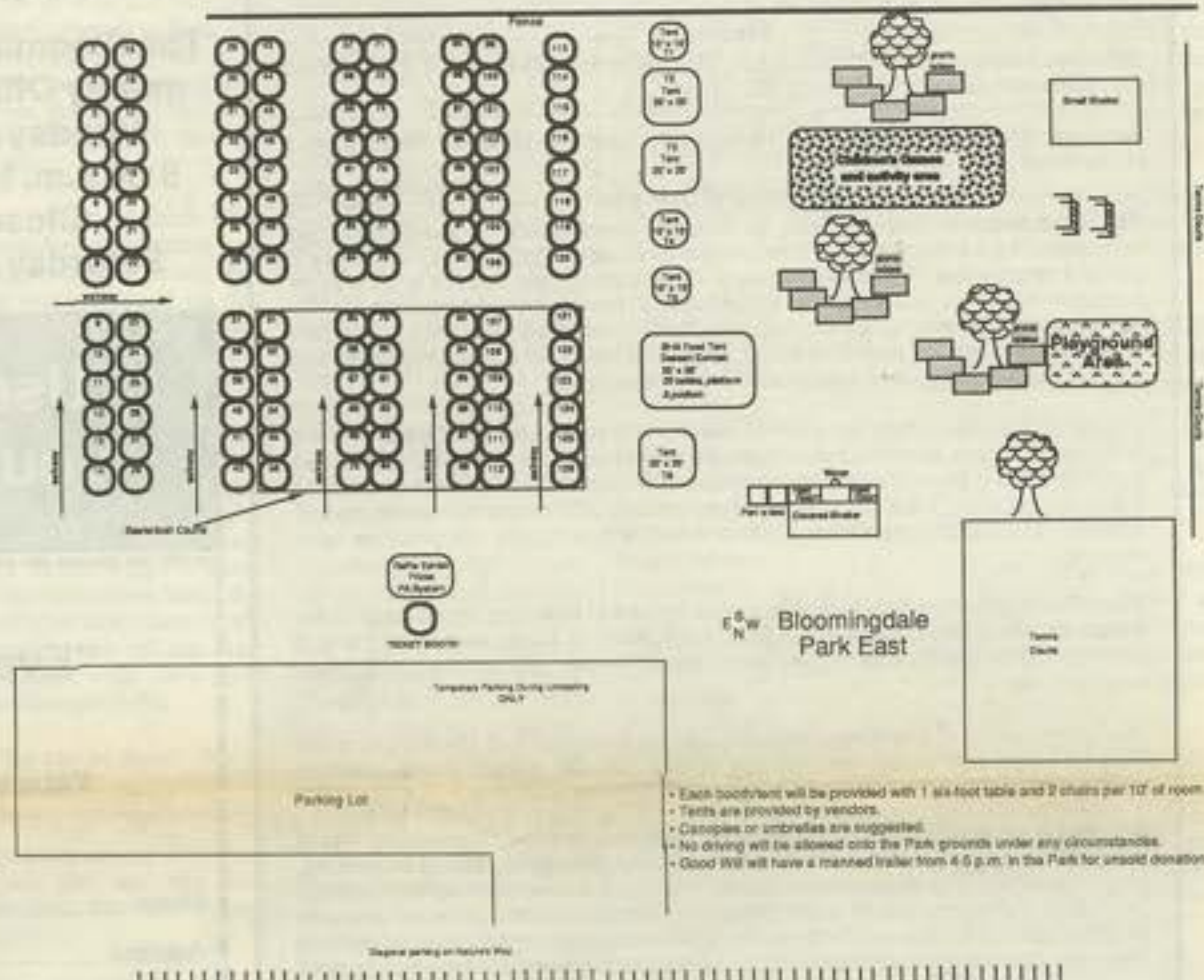
Garage Sale Booth

Included in the price of the booth is 1 six-foot table + 2 chairs.

Net proceeds will be used for the BHA Scholarship Fund and other special projects.

BHA Flea Market and Family Picnic Committee Directors...

Susan DeLuca, David Lees, and Dave Fraser



Flea Market and Picnic Registration Form

RETURN THIS ENTIRE RESERVATION FORM

Make your checks payable to: The Bloomingdale Gazette, Inc.
Mail or bring to: Bloomingdale Community Office, 827 E. Bloomingdale Ave. • Brandon, FL 33511

Section A.
Name: _____ 1990 BHA Member Number: _____
Business name if applicable: _____
Daytime telephone: _____ Evening telephone: _____
Street address: _____ City: _____ Zip: _____

Section B.
Using the map provided on this page, choose the booth #'s you would like in order of preference (Tent spaces are the same price with you providing the tent):
1 _____ 2 _____ 3 _____ Anywhere _____ or Tent space _____ Tent space _____
Type of booth (all booths are 10' x 10' in size, you may purchase more than one booth):
_____ Commercial spaces at \$75 each (BHA Members \$50) \$ _____
_____ Garage Sale spaces at \$50 each (BHA Members \$25) \$ _____

Description of what you plan to sell: _____
Will you be bringing very large items to sell such as large pieces of furniture? _____

Section C.
I would like to donate the following:
_____ Prize(s) for: the giant raffle; and/or for children's games; and/or for the dessert contest.
_____ My time as a volunteer.

Section D. PICNIC RESERVATIONS
_____ Yes, we will be attending the picnic:
_____ # Adults (18+) _____ # Children
_____ No, we will not be attending the picnic.
_____ Yes, we will be bringing an entry for the dessert contest.
_____ Yes, we will have children participating in the children's games.
Ages of each child _____

Please return this form no later than September 14.

<p>The Bloomingdale Community Center and the offices of The Bloomingdale Gazette, Inc., will be moving to a new location soon. Watch for further announcements!</p>	<p>Bloomingdale Gazette 827 E. Bloomingdale Brandon FL 33511</p>	<p>BULK RATE U.S. POSTAGE PAID BRANDON, FL PERMIT NO. 85</p>
---	--	--

The Bloomingdale Gazette, Inc.

827 East Bloomingdale Avenue • Bloomingdale Square • Brandon, FL 33511
Telephone (813) 681-2051 • FAX (813) 689-4328

Bloomingdale Homeowners Association Publisher

Susan L. DeLuca
President/General Manager

Pamela Liguori
Secretary/Treasurer

Bonnie R. Abrado
Assistant Manager

Editorial

News director/editor: Alexa Hrvatin. **Staff writers:** Art Bleau, Jennifer Rogers, Nancy Heston, Liz Fox.

Advertising Department

Advertising director: Betty Wenning. **Classified sales:** Dale S. Wozniak
Advertising assistant: Melissa Nickerson. **Rent-A-Kid sales:** Doris Pence.

Circulation

Distribution manager: Karen Ellis. **Circulation assistants:** Rent-A-Kid delivery system.

Business Department

Office manager: Dale S. Wozniak.

Accounting

Services provided by: James Laughlin, CPA, Bloomingdale Resident; 710 Oakfield Dr., Suite 149, Brandon, FL 33511; 651-1740.

Legal Counsel

Services provided by: John P. Holsonback, attorney; Melendi, Gibbons, and Holsonback, P.A., 228-0853.

Statement of Operation

The Bloomingdale Gazette, Inc., (a for-profit corporation) is a wholly-owned subsidiary of the Bloomingdale Homeowners Association, Inc., which is a non-profit 501(c)4 corporation. The sole purpose of *The Bloomingdale Gazette* is to serve as a medium of communication for the Bloomingdale Homeowners Association and the residents of the Bloomingdale Community. The Bloomingdale Gazette, Inc., is totally self-supporting with its revenues being generated solely by advertising funds and various fundraisers geared specifically for the newspaper.

The Bloomingdale Gazette is published monthly with occasional special editions and is delivered in door-knob bags directly on the door of every residence within the area governed by the Bloomingdale Homeowners Association, Inc., plus other selected areas at no charge. It is also mailed to approximately 300 recipients including public officials. Circulation varies from 4,200 to 4,500; actual figures are available upon request.

The Bloomingdale Gazette is also available for free at four area newsstands (Little Professor Book Store, Convenient Food Mart, Kash 'n Karry, and Farm Store in Erindale Plaza) and by subscription at the rate of \$14 per year to cover mailing and handling fees.

The entire content of *The Bloomingdale Gazette* is the property of The Bloomingdale Gazette, Inc., and is not reproducible in any manner without express written permission from the President of The Bloomingdale Gazette, Inc.

Services provided by The Bloomingdale Gazette, Inc., include: Typesetting, typing services, advertisement design and layout for other publications, display advertising, classified advertising, display classified advertising, business card advertisements, and delivery of inserts and circulars. Restrictions apply and discounts are available for Participating Members of the Bloomingdale Homeowners Association, advertising agencies, and other non-profit organizations. Rate cards are available upon request.

Watch for *The Bloomingdale Gazette* to be delivered on your door on the following weekends: October 6 (Deadline is September 10)

Community Telephone Directory

BLOOMINGDALE HOMEOWNERS ASSOCIATION, INC.

827 E. Bloomingdale Ave.
Brandon, FL 33511 • 681-2051

President-- Martin Andersen...684-5904
Vice President-- Russ Lembke...689-2513

Treasurer-- Carl Stickeler...689-5556
Secretary-- Joyce Morris...689-7019

Directors

Thomas Brophy 684-0865
Susan DeLuca 689-4972
Carmen Forestier 685-4376
Dave Fraser unlisted
David Lees 681-3999
Bill MacKinnon 684-8524
Bill Povilus 654-4917
Chuck Walsh 689-9688
Alternate: Ron Schall

BLOOMINGDALE OAKS SPECIAL TAXING DISTRICT

P. O. Box 3132
Brandon, FL 33509-3132

President

Linda Hagan...681-6223

BLOOMINGDALE NEIGHBORHOOD WATCH ASSOCIATION

827 E. Bloomingdale Ave.
Brandon, FL 33511 • 681-2051

DISTRICT II

Position available for a Coordinator
T. J. Pinta, Deputy, HC Sheriff's
Department
Crime Prevention Bureau, 247-8115

BLOOMINGDALE SPECIAL TAXING DISTRICT

P. O. Box 902
Brandon, FL 33509-0902

President

Errol Whitfield...681-7462

Vice President

Peter Aluotto...685-0727

Treasurer

Joe Liguori...681-9655

Recording Secretary

Fred G. Uphoff...685-3013

Corresponding Secretary

Ron Delavan...685-1711

Trustee--

Frank DeVito...685-4818

Trustee--

Pam Mabe...684-8924

PROPERTY MANAGER

Bobby Cole...685-2239

BLOOMINGDALE MOBILE WATCH

827 E. Bloomingdale Ave.
Brandon, FL 33511

Core Committee

Coordinator

Hal Labkon...681-6853

Secretary/Scheduler

LaWayne Wyatt...685-2072

BHA Liaison

Chuck Walsh...689-9688

Treasurer

John Britton...681-1553

Equipment Mgr

Steve Schneider...685-8378

Distribution

Ed Holzman...681-2548

David Guy...681-5943

Chris Pheils...681-9026

Paul Kelmer...681-9701

Technical Advisor--

Paul Truesdell 653-1725

Location of the
Bloomingdale Community Office
827 E. Bloomingdale Ave.
Bloomingdale Square
(Watch for a notice of moving)

Bloomingdale Avenue



Office space donated by the
Paragon Group

The Bloomingdale Community Office is open:
Monday to Friday
9:30 a.m. to 2:30 p.m.
Closed on
Saturday & Sunday

IMPORTANT COMMUNITY MEETINGS

All meetings take place at the
Bloomingdale Community Office
(See map on left)
These are public meetings and all
Bloomingdale Residents are invited

SPECIAL TAXING DISTRICT MEETINGS
Monthly Meeting: Second Monday of the
month at 8 p.m.

BHA BOARD OF DIRECTORS
Monthly Meeting: Second Tuesday of the
month at 7:30 p.m.

BHA GENERAL MEMBERSHIP MEETING
Occur five times per year in September,
November (elections), January, March, and
May. The next meeting will be in September
which is the September 22 Family Picnic.

BLOOMINGDALE OAKS SPECIAL TAXING DISTRICT MEETING
Monthly Meeting: First Thursday of the
month at 7 p.m.

Meetings for Mobile Watch and
Neighborhood Watch are on a per need
basis. Watch this listing for dates and
time.

Use this form for all of your community needs.

Bloomingdale's "Everything you ever needed" Form

Mail or bring to: Bloomingdale Community Offices
827 E. Bloomingdale Avenue
Brandon, FL 33511

Name _____
Address _____ City _____ Zip _____
Home phone _____ Daytime phone _____

I/We would like:

- To become a Participating Member in the Bloomingdale Homeowners Association: Dues \$10/year; Nov. 1 to Oct. 31.
- To make a donation to:
_____ BHA Legal Fund
_____ BHA Scholarship Fund
_____ Other: _____
- To join _____ Mobile Watch _____ Neighborhood Watch.
- To be placed on waiting lists or volunteer lists for:
_____ BHA Board of Directors
_____ STD Board of Trustees
_____ Committees as needed
- To report a code violation such as unmowed lots, junk cars, safety hazards, etc. (Your name remains confidential, but MUST be on this form at the top.) Call the office if the problem is not cleared up within 2 weeks of sending in this notice.

Location & nature of suspected violation--

To be contacted regarding advertising in *The Bloomingdale Gazette*.

To make a comment about:

TOTAL ENCLOSED \$ _____

Editorial

PRESIDENT'S POINT OF VIEW

by Martin Andersen
President, Bloomingdale Homeowners Association

APATHY - the lack of interest or concern. Is it happening in Bloomingdale? When things are going well and there are no major problems, people seem to wrap themselves in a cocoon and let the rest of the world go by. From time to time we shake off that cocoon and show true concern. A recent example was this past July when a young resident was reported missing. The response and concern of the community was outstanding; however, most of us moved back into the cocoon.

The last two issues of the Gazette had articles about our losing the Neighborhood Watch program. The BHA asked for help from the community in an effort to save the program. There are approximately 3000 families living in Bloomingdale and only 3 residents responded to the appeal for help. Three concerned citizens out of three thousand, one tenth of one percent of the population of Bloomingdale. Not an overwhelming response. I thank those residents that did show a concern and an interest in serving as the overall coordinator of Neighborhood Watch. Neighborhood Watch is an important means of providing emergency information to the community and a daytime and nighttime crime deterrent network. We will know

in the next few weeks if Bloomingdale is going to have a Neighborhood Watch. This is a program that can only work with the support of the community.

If the Neighborhood Watch goes, we will be left with only the Mobile Watch. We can be thankful for our Mobile Watch and the volunteers that support that program. They provide Bloomingdale with an invaluable service by patrolling the community as a deterrent to crime. However, the Mobile Watch does not and cannot take the place of the Neighborhood Watch.

The BHA will continue to work with the STD in exploring the pros and cons of contract security for Bloomingdale. Once all the data and options are evaluated, it will be presented to the community for comments. Your input will help determine the direction the BHA and STD takes in reducing crime in Bloomingdale.

The Sheriff has told us that Bloomingdale has enjoyed one of the lowest crime rates in the county. The statistics bear this out, but one has to wonder how much longer we can enjoy low crime rates without the residents fully supporting our volunteer crime-deterrent programs.

Down that bumpy trail again — speed bumps that is

by Martin Andersen
President, Bloomingdale Homeowners Association

One of the most recognized problems in Bloomingdale is that of residential speeding. More than once speeding inside our subdivision has caused deaths and still with this example it continues to plague us. The most recent vehicular accident involved a teen who ran over a bus stop on the first day of school.

In particular, there are two main streets in Bloomingdale which have created more problems than any other—Bloomingfield Drive in West and Nature's Way/Culbreath in East. Of the two, probably the most dangerous is Bloomingfield Drive due to the fact that residences directly face the street.

Not only have there been numerous accidents on Bloomingfield Drive, but the average speed on this street (as reported in this newspaper) is well into the 40's. For a long time we all assumed that the 4,000+ cars that travel Bloomingfield Drive within a 24-hour period were outsiders cutting through; but reports by the Sheriff's Department and Hillsborough County government have found that the high traffic count and the speeders are all our own residents with very little cut-through traffic.

What can be done? We've

tried a lot of different things. We (the BHA) have spoken at numerous County Commission meetings asking for relief; we've spoken with speeding task force personnel with the Sheriff's office; and we've pursued all feasible structural options for Bloomingfield Drive.

In short, we've been down the path many times. We have researched radar signs that tell you your speed and shown this to the Sheriff's Department. We found there were "portable speed bumps" that could be placed on Bloomingfield Drive (the legality of this has yet to be determined). We can't close off Bloomingfield Drive unless a majority of all homes in the West sign a petition and agree to it. The County says the street is too wide for speed bumps. Stop signs are ineffective as people just run them and create yet another hazard. But now diverters are again being talked about by a resident on Bloomingfield Drive who is working with Gary Tait, Team Leader for the Residential Traffic Control Program.

Approximately three years ago in our multiple dealings with Gary Tait, diverters and medians down Bloomingfield Drive seemed to be the solution of choice. This idea is again surfacing although the county was asked several years ago by the BHA to put something in place.

The Bloomingdale Homeowners Association strongly endorses any individual or group efforts to resolve the issue of residential speeding on Bloomingfield Drive and encourages the Hillsborough County Board of County Commissioners to again consider the problem seriously and address the solutions speedily.

Apples and Computers

by Alexa Hrvatin
Gazette Staff Reporter

Remember all those golden-rod register tapes from Publix supermarkets you collected for a program known as Apples for the Students from September 1989 until April 1, 1990? According to information supplied by the public relations department for county schools, the program was successful.

Brooker Elementary earned 20 pieces of software, two disk drives, and computers. Alafia earned 5 pieces of software, three computers,

Brandon High School Reunion for '52-'56 set

A combined class reunion for the graduating classes of 1952 - 1956 at Brandon High School will be held on Saturday September 19, 1990 at the Brandon Moose Lodge at 964 South Miller Road, Valrico, Florida 33594. The reunion will begin at noon and food will be served from 2 p.m. until 6 p.m. The cost is \$15 per person. Please call 689-6043 for more details.

The Brandon High School reunion committee is still looking for the following classmates. If you have any information regarding any of the persons listed below, please contact Martha Ann Hudson Albritton at 685-6309, Marvin Lopez at 689-8901, or Bobby Johnson at 689-3943.

- Class of 1952
Tommy Dickey
Robert Bruce McDonald
- Class of 1953
Guyan Barry
Barbara Childers
Floyd Collins
William Cummins
Davis Currier
Myra Dollar
Ralph Harris
Doyle Harris
Nila Jones
Wayne McClamma
Richard McPherson
Doris Mays (Morgan)
Hildred Paris
Lorene Richmond
Vida Gail Warren (Jilley)
- Class of 1954
Bill Coggin
John Gaulker
Bryan Guthrie
Ann Learie Haigler
Leonard Learie
Jerome McCatty
Nelson Saunders
- Class of 1955
Richard Coup
Loretta Dawson
Tommy Harkins
Runay Johnson
George Schenck
Margaret Stephenson
Susan Weinberg
Elizabeth Kennedy Wolf
- Class of 1956
Jeanette Yvonne Allen
Marie Kaiser Eaker
Carol Rae Enders
Helen Harkins
Bonnie Lavon Harris
Sonya Kenyon
Frankie McGehee
James Sanders
Norma Sarver
Anne Travis
Fred Ward
Richard Wiegel

Be a BSHS Booster

by The BSHS Athletic Booster Club

Bloomingdale Athletic Booster Club is an ALL SPORTS booster club that supports nineteen girl's and boy's sports. Each year over \$2,000 has been donated by the booster club to provide our coaching staff with proper equipment. In addition, athletic equipment and needs, such as wrestling mats, climbing ropes, soccer wall, and a pitching machine have all been purchased through the efforts of the booster club. Patches for all students on conference, regional and state teams were also provided. We are most proud that the booster club has also been able to provide \$1,000 in academic-athletic scholarships each year.

Bloomingdale High School offers several options in joining their booster organization:

ALUMNI MEMBERSHIP — \$10 entitles bearer to reserved seating at all home football games, free parking and one free Bloomingdale booster tee-shirt. This applies to Bloomingdale graduates only.

SINGLE MEMBERSHIP — \$15 entitles bearer to reserved seating at all home football games, free parking and one free Bloomingdale booster tee-shirt.

FAMILY MEMBERSHIP — \$25 entitles bearer to reserved seating at all home football games for all family members. Also includes free parking and one free Bloomingdale tee-shirt.

CENTURY CLUB MEMBERSHIP — \$100 entitles bearer to reserved seating at all home football games, free parking and one free Bloomingdale tee-shirt. Also included is a listing on the Century Club sign at the football field, recognition at half-time at all sporting events, and a certificate of appreciation for display. Century Club members will also have the option to purchase a ticket package for all home football or basketball games for \$25.

CATCH THE BULL SPIRIT! Call to join the Bloomingdale Athletic Booster Club. Your support will insure continued academic and athletic excellence at Bloomingdale High.

Progress Village was eligible for a monitor, and B.T. Washington earned 2 pieces of software, one computer, and a disk drive.

My Turn

by Susan L. DeLuca
General Manager

As you know, last month we extended our coverage of community news to the Heather Lakes subdivision. I asked for feedback and I received it.

We only had two negative comments. One from a lady who wouldn't talk to me so I don't know why she was concerned and another from one of our classified advertisers.

The first needs to call me back and talk to me directly. The second I think we fixed. He was concerned that the classifieds, by being in the second section, appear to be geared to Heather Lakes only. We've changed the heading to reflect otherwise.

One of my staff members stated she was hoping the Heather Lakes news would be longer than one page. In the future it probably will be as they get their writing and reporting skills in gear. Hopefully, other homeowners

associations will want space also and this will lengthen that second section, too.

Other than those two, all comments have been highly enthusiastic, very supportive, and has received a high approval rating.

We are moving and upgrading our offices. As you may be aware, the office we are using is donated to the community by the Paragon Group which owns Bloomingdale Square. We have two options the Board will vote on September 11. The first is to move into the vacated Carteret office next to Publix and the second is to take up the offer by the developer of Bloomingdale Plaza where Kash 'n Karry is located. Either way, we will be moving the weekend of September 29 if not earlier.

Paragon has been highly supportive of our community, this newspaper, and the BHA. It is recognized, acknowledged, and appreciated.

★★★★★★★★★★★★★★★★★★★★

BLOOMINGDALE STARLETS BATON CORPS

Lessons beginning
in September



Competition, Awards and FUN for all!

Girls Ages 3-12
Bloomingdale Resident

For information, complete and return form to:
Bloomingdale Starlets
733 Caliente Dr. • Brandon, FL 33511
OR...Call Susan at 681-4927

Age: 3-5 6-8 9-12

Name _____
Address _____
Telephone _____

604 E. Bloomingdale Ave.

Bob's Farm Market

Fresh fruit & vegetables

10% Discount w/this ad. Expires 10/1/90



Thanks for your support over the long, hot summer!

Area Churches

Apostles Lutheran
200 N. Kingsway,
Brandon
689-2571
Mary & Tim Canniff-Kuhn
Sunday Schedule:
Worship 8:30 am & 11 am

Bell Shoals Baptist Church
2102 Bell Shoals, Brandon
689-4229
Pastor: Dr. Bob Reccord
Sunday Schedule:
Worship 10:55 & 6:30 pm
Bible Study: 9:30

Bloomingdale Community Brethren Church
1310 E Bloomingdale Ave, Valrico
681-2790
Pastor: David L. Stone
Sunday Schedule:
Worship 10:30 & 6 p.m.
Sunday School 9:30

Brandon Christian Church (Disciples of Christ)
910 S Bryan Road,
Brandon
689-4021
Pastor: Rev. Larry L. Chambers

Sunday Schedule:
Worship 10:45 a.m.
Sunday School 9:30 a.m.

Christ Community Church
1310 John Moore Road,
Brandon
685-6786
Pastor: Clifford Bassett
Sunday Schedule:
Worship 11:00 & 6 p.m.
Sunday School 9:45 a.m.

First Christian Church of Brandon
207 New Hope Road,
Brandon
689-1457
Minister: Larry Delks
Assoc. Minister: David Waits
Sunday Schedule:
Worship 10:45 am & 6 pm
Sunday School 9:30 a.m.

First Pentecostal Church
2207 Lithia-Pinecrest Rd,
Brandon
685-4827
Pastor: F. E. Goldsberry
Sunday Worship 10 am
& 6 pm
Wednesday Bible Study
7:30 p.m.

Holy Innocent's Episcopal Church
Valrico Road at Front Street, Valrico
689-3130
Pastor: Stephen L. Rudacille
Sun. Worship 8/10:30 a.m.
Christian Ed Class 9 a.m.
Nursery available all morning
Wednesday Eve 7:15 p.m.

Presbyterian Church of Bloomingdale
3212 Lithia, Valrico
No. of Bloomingdale Ave
654-3699
Pastor: Reid B. Isenhardt
Sunday Schedule:
Worship: 10:30 a.m.
Church School: 9:15 a.m.

Resurrection Community Church
3225 Bell Shoals Rd,
Brandon
685-6377
Pastor: Wayne Radd
Sunday Schedule:
Worship: 10:30 a.m. & 7 p.m.
Childrens Church & Nursery: 10:30 a.m.

St. Andrews United Methodist Church
3315 Bryan Rd, at Bloomingdale, Brandon
689-6849 or Preschool 689-1207
Pastor: Robert A. Hahn
Sunday Schedule:
Worship 8:30 & 11 a.m.
Sunday School 9:40;
Youth 5:15;

St. Mark United Church United Church of Christ
2914 Lithia-Pinecrest Road, Valrico
685-0998
Pastor: Garry A. Scheuer, Jr.
Sunday Schedule:
Worship 10:45
Church School 10:45

St. Stephen's Catholic Church
5049 Bell Shoals Road,
Valrico
689-4900
Mass Schedule:
Saturday Vigil 5:30 p.m.
Sunday 8 a.m., 9:30 a.m., 11 a.m.
Weekdays Mon.-Fri. 8 a.m.

South Brandon Baptist Church
4929 Bell Shoals Road
681-1045
Pastor: Al Browder

Sunday Schedule:
Bible Study 9:45 a.m.
Worship 11 a.m. and 7 p.m.

South Brandon Community Church
Office: 406 E. Bloomingdale Ave, Brandon
653-2317
Pastor: Ed Ross, 653-2417
Youth Pastor: Jeff Dunn
Sunday Schedule:
Worship 10 a.m. at Bloomingdale High School

A brand new non-denominational church which had it's first service on December 17, 1989. Youth, Singles, Home Bible Studies, Softball, Volleyball, Fellowship Groups Offered

Tampa Bay Christian Ctr
3920 S. Kings Avenue,
Brandon
689-9497
Pastor: Dr. David K. Blomgren
Sunday Schedule:
Worship 10:30 & 6 p.m.
Mid-week Service:
Wednesday 7:30 p.m.

Bell Shoals Church of Christ
2908 Bell Shoals Road,
Brandon

Immanuel Lutheran Church & School
2913 John Moore Road,
Brandon

Westminster Presbyterian Church
402 East Lumsden Road,
Brandon

Synagogue Listings

Chabad of Brandon Jewish Center
889 E Bloomingdale Ave.
Bloomingdale Square,
Brandon
689-7770
Service Schedule:
Friday - 7 p.m.
Saturday - 10 a.m.
Sun. Hebrew School-10 am
Tuesday Adult Classes - 7 p.m. & 8 p.m.

Jewish Community Center of Brandon will be holding reform services in the social hall of the Apostles Lutheran Church, 200 N. Kingway. The services will be held on the 1st and 3rd Friday of each month at 7:15 p.m. For more information call 681-9680 or 645-3759.



CALL AND ASK FOR
Donna MacGiffert
681-0313 (24 hr. pager)

The Prudential
Florida Realty



"I've Personally...

110
~~108~~ **Sold Resales**
in Bloomingdale ! ! !"

Consistent Top Multi-Million Dollar Producer

**For Buying or Selling
Make the Proper Selection**

Call your Neighborhood Specialists

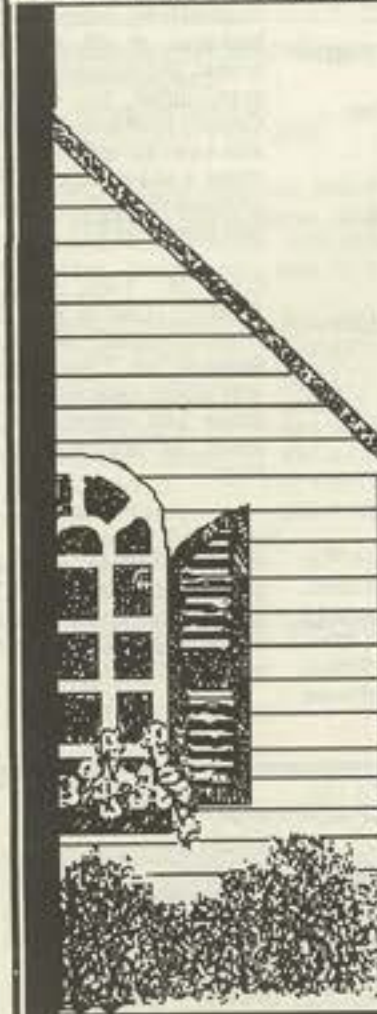
DONNA MacGIFFERT

&

Mary Ann Schmidt

681-0313 (24 hour pager service)

685-8617 (evenings)



- 3 years Leading Edge Society :
Top 4% of nation's sales leaders
- Consistent multi-million dollar producer since 1985: Millions & millions sold
- Proven success record in Bloomingdale
- Corporate & military relocation specialist
- Call me for a current market analysis
- 7 years in the Bloomingdale area

If your property is currently listed with a real estate broker, please disregard this offer. It is not our intention to solicit the offerings of other real estate brokers. We cooperate with them fully.

Hillsborough Schools Tops in Florida for Fifth Consecutive Year

For the fifth consecutive year, more Hillsborough County Public Schools students were named Florida Academic Scholars than any other school district in Florida.

A record 396 members of the Class of 1990 earned the Florida Academic Scholars honor and qualified for the Florida Undergraduate Scholars Fund.

In ceremonies at Tampa Theatre on August 7, the graduates received a medalion and certificate from Walter L. Sickles, Superintendent of Schools, as well as congratulations from members of the School Board.

Hillsborough County has gone from 37 Florida Academic Scholars in 1985 to 396 in 1990 and has led the state in the number of scholars since 1985.

The Florida Academic Scholars program was created by the Florida Legislature in 1985 to recognize and reward academic excellence achieved by high school students. Students who qualify receive renewable scholarships from \$1,000 to \$2,500.

Bloomingdale High School was represented by the following list of students:
Adams, Stephanie

Akter, Salma
Baird, Charles
Barker, Gregory
Bartlett, Kristi L.
Beal, Daniel J.
Bontadelli, Jamie
Boote, Timothy
Bowen, Chad S.
Bryan, Justin C.
Catalano, Michael S.
Church, Jason E.
Coeville, Michael S.
Creager, Tiffany L.
Dickinson, Robert A.
Doyle, Roger S.
Eggleston, Theodora
Forinash, John D.
Franke, Shana
Goodwin, Lisa M.
Gross, Edythe M.
Hill, Tracy E.
Himmel, Stephen C.
Hoffman, Glenn
Mahlum, Bradley
Munoz, Laura
Nailling, Joyce
Nelson, Toben
Nolte, Christopher
Parry, Melissa
Patel, Seema
Pietras, Jeanette
Pitman, Sara
Povilus, Jeffrey
Rosenau, Sandra
Sheffield, Scott
Shillady, Tracie
Sopko, Rance Derek
St. Pierre, Derek
Talley, Robert
Taylor, Lance
Virag, Kathleen
Wiebeld, Elizabeth
Wilburn, Christopher
Williams, Kevin
Williams, Thomas
Woods, Meliitha
Zimmerman, Anne

We want your Community News!

Because we are a small, community newspaper, the birth of a baby is BIG news for us. So don't keep it from us. If you know of some type of happening, let us know!

Examples might be:

...Engagements and Weddings with photos

...College-bound students

...Promotions both military and civilian

...Athletic notices

...Social affairs such as block parties, card parties, and other get togethers

...Births and deaths

Submit your information by mailing to:

Bloomingdale Gazette
827 E. Bloomingdale Ave.
Brandon, FL 33511

OR...by calling us with the information at: 681-2051.

If it is after hours, you are welcome to leave the information on our answering machine.

Kindergarten teacher Linda Laumeier and her aide Mrs. Hearne, pause with their class to check the menu board at "Alafia on the Green."





Center Place

Temporary location 526 Oakfield Drive

Upcoming Classes for September

<p>Children</p> <p>Cartooning - Ages 8 & up Teen/Adult Wearable Art - Teen & up Sweet Saturday - Ages 5 thru 10 Just for Kids - Grades 1-5 Teen Clay - Jr. & Sr. High Kids Art Fun Workshop - Ages 5-11 Kids Clay Works - Ages 5-11 Girls' Homemakers Class - Ages 10 & up Girl's Wearable Art - Ages 6-10</p>	<p>Adults</p> <p>Ballroom Dance • Paper Decorating • Design & Watercolor • Pastel Workshop • Wearable Art • Beginning Spanish • Beg & Inter Watercolor • Inter Folk Art Painting • Beg & Inter Oil Painting • Porcelain Doll • Folk Art Workshop • Clay • Quilted Sampler • Rail & Square Quilt • Tole Painting on Wood • Flower Arranging • Painting on Fabric • Heart Sachet Class</p>
---	---

Temporary Location: 526 Oakfield Drive
Mon-Fri 9:30 a.m. to 2:30 p.m.
Phone 685-8888

For class registration and more information



The Bloomingdale Homeowners Association
proudly presents...



Roberts BROS. 3-RING CIRCUS

All Under a Bigtop
Where It's Most Fun

**SAVE!
SAVE!**
Buy Advance
Tickets NOW!



The Circus is coming Saturday, October 20 for two performances at 3 p.m. and 5:30 p.m.

Acrobats, clowns, performing animals, aerialists and lively music are the circus tradition and Roberts Bros. Circus will bring them all to Bloomingdale's Park West. The show is on its 17th annual tour with Sarasota, Florida, being its home.

Advance tickets go on sale now at the Bloomingdale Community Office, at the September 22 Flea Market/Picnic, or by using the coupon below. Adults are \$5 and children are \$3 each for advance tickets. At the door, the tickets will be \$6 and \$4.

A percentage of the proceeds of advance sale tickets will be going to the Bloomingdale Homeowners Association.

Businesses can get involved by purchasing banners @ \$35 each and their banners will be pointed out by the Ringmaster as a supporter of the Bloomingdale Homeowners Association. Blocks of tickets are also available for businesses. Call 681-2051 regarding advertising.

ADVANCE TICKETS:

Go on sale at the September 22
Flea Market/Picnic

or may be purchased by mail:

Make your check out to: BHA
827 E. Bloomingdale Ave. • Brandon, FL 33511

# _____ Adults @ \$5 each \$ _____	<input type="checkbox"/> 3 p.m. Performance
# _____ Children @ \$3 each \$ _____	<input type="checkbox"/> 5:30 p.m. Performance
Total Enclosed \$ _____	

Name _____
Mailing Address _____



Halloween is coming and we want your ideas!

Send us your ideas for children's parties as alternatives to trick or treating or additional celebrations for Halloween. If you have special recipes for parties, such as cookies and cakes or decorative craft ideas, or even instructions to make costumes, please share them with us.

For each item we publish in our October issue, the *Gazette* will pay \$5.

You can mail them, bring them to the community office, or call them into us. Use page 2 of this issue to reach us.

The deadline for submitting entries is Friday, September 21.

Over 1,846 books were read...

...for Little Professor's Summer Reading Program. Pictured with store manager Arlene Stein are David Berland, a second grader at Alafia, who read 84 books, and Michelle Miller, in sixth grade at Progress Village, who read 86 books. They won \$25 gift certificates for reading the most books. The store has certificates for every child who participated and they may be picked up at any time.



This is RE/MAX Country



RE/MAX Realty Unlimited...

"...sells more houses in Brandon than any other Real Estate Company!"

(According to Greater Tampa Association of Realtor MLS statistics)

Chances are RE/MAX will probably sell your house. So why not list it with RE/MAX now!

Call one of us today at 684-0016



Karen Blomster
Realtor, GRI
684-4441 evenings



Joyce Burns
Realtor
685-1064 evenings



Brenda Carter
Realtor
689-8483 evenings



Paula Cope
Realtor
685-7260 evenings



Anita Creasy
Realtor, GRI
685-6315 evenings



Cathy Kennelly
Realtor
685-1474 evenings



Betty Landon
Realtor
689-3388 evenings



Steve & Kathy Lieberman
Realtors, GRI
684-5368 evenings



Myra McCormick
Realtor
684-4441 evenings



Lois Yates
Realtor
684-7820 evenings

Bloomingdale's Watchers

Mobile Watch News

By LaWayne Wyatt
Core Committee

In addition to the *Gazette* report last month of the special efforts of the many volunteers who manned the community office and assisted the law enforcement officers, here is a report of the Mobile Watch involvement.

At approximately 9 p.m., Chris Pheils, the base operator, received a call from Jack Ratliff, the Oakdale Reserve Security Patrol. Jack indicated the Sheriff's Department was attempting to contact the Mobile Watch concerning a missing boy. Chris contacted the investigating deputy, was told the situation, offered our assistance and immediately began contacting our Quick Reaction Patrols and anyone else who was willing to help. The on-duty patrols and each additional individual was directed to check with a deputy at Park West who was coordinating the search.

Throughout the night the Sheriff's Department had 6 to 10 detectives and marked cars working the search. The Mobile Watch had 13 or more cars assisting and many other people also joined the search. At approximately 12 midnight,

the Sheriff's Department distributed a photocopy of the boy to all searchers and open stores within the area. By 2:30 a.m. every pond, trail, road, wooded area, field and shopping center in the Bloomingdale area had been searched. Volunteers had searched as far as Kings Avenue, Brooker Road, Lithia-Pinecrest Road and Boyette Road. Deputies had also checked convenience stores as far as Highways 301 and 60. At 2:30 a.m. the volunteers were sent home but requested to return at dawn, if possible. The Sheriff's Department continued searching until morning.

At 8:45 a.m. Capt. Walker, District II, called the Labkon's and asked what the Mobile Watch had planned, to continue with the search. He was advised we would do whatever they wanted. At 9:30 a.m. Capt. Walker requested and was granted permission to use the Bloomingdale Community Office. Shortly thereafter Capt. Walker requested Hal to obtain volunteers to conduct a door-to-door campaign in conjunction with his deputies. Leslie Schneider and Alma Guy started calling everyone on the Mobile Watch roster. Approximately 30 people responded. Those who volunteered included Mobile Watch members, their wives or older children and neighbors.

As these volunteers arrived at the Community Office they were briefed by Capt. Walker and assigned in teams of two to a deputy. Each team was assigned a street and the volunteers went door-to-door asking residents to search their house and yard and report anything significant to the deputy. This search continued until the missing boy had been located.

Many people were involved in this search. Following are some of those who assisted and their contribution:

Vince Loadwick and Steve Schneider walked the wooded area around The Spot, both sides of the Alafia River and the wooded area north of Orangepointe Drive.

Chuck Walsh walked the woods around The Spot, the Alafia River and checked the Golf Course.

Ted Evans helped search The Spot and Alafia River.

David Labkon helped at The Spot, Alafia River and Golf Course.

Pam Labkon searched the pond and island behind her home, the Park West pond and the Culbreath/Lithia area woods, ponds and shops.

Paul Truesdell acted as liai-

son at Park West and assisted Chris in assigning search areas.

David Watkins voluntarily joined the search even though he had already gone to bed because of an early wake up for work.

Paul Kelmer received the call just as he arrived home from work. He joined the search for an hour while in his business suit, went home and changed and continued until 2:30 a.m.

Maureen Pheils and daughter Kelly searched many roads and shopping center areas.

Jennifer Pheils and a friend searched the woods between Bloomingdale West and South Oaks.

Sean Pheils rode with a deputy to show him where the boy normally played with friends.

Rick and Cece Sopka and Tim Oliver, the regularly scheduled patrols, all helped until 2:30 a.m. despite early wake up requirements.

Six unknown teenagers who may or not be Bloomingdale residents joined the search.

We apologize to others who assisted but were not named.

Attempted abduction?

by Alexa Hrvatin
Gazette Staff Reporter

A mother from Bloomingdale East came to the community office amid the missing child search last month, to remind deputies that her child had been approached by a stranger two weeks before. She related that as her eight year old daughter played soccer with friends at the side of the house, a man in a large red car called to her, asking her to come over to the car. She ran away from the stranger as he continued calling her, and then he drove away when she reached the house. The incident was reported to the sheriff's department.

If a crime is in progress or just occurred, call the sheriff first.

After that call the Mobile Watch at:

Hal Labkon...681-6853
LaWayne Wyatt...685-2072
Chuck Walsh...689-9688
John Britton...681-1553
David Guy...681-5943
Steve Schneider...685-8378

New Bloomingdale Fire Station

by Alexa Hrvatin
Gazette Staff Reporter

From Chris Heins, Bloomingdale resident's account of those in attendance on August 12, the new Bloomingdale Fire Station II dedication festivities were a great success. The open house featured hot dogs, sodas, popcorn, balloons, and the chance for little ones to explore several fire trucks.

According to the county, the new, 6,000 square foot fire station was built at a cost of \$375,000. The station is staffed 24 hours a day by the Bloomingdale Volunteer Fire Association. The station houses a Class "A" pumper, a thousand-gallon water wagon, a brush truck and rescue squad. The station was built to replace an aged, wood frame house on Little Road and is located at 4705 E. Bloomingdale Avenue.

The first day of school brought more than new teachers and friends



Onlookers watch as this car is pulled from the yard at the corner of Nature's Way and Briarlake. There were no serious injuries.

by Alexa Hrvatin
Gazette News Director

The first day of school did not begin well for these high school students, who found themselves involved in this one-car accident. Parents were angry and called the *Gazette* with their feelings about students who "endanger the lives of youngsters waiting at bus stops." This particular accident happened August 27 at Nature's Way and Briarlake Drive. The car was northbound on Nature's Way, attempted to make a left turn on Briarlake, and overshot the turn. The car flattened the street sign and continued into the yard, stopping with its hood in the bushes and trees. The opposite corner is a school bus stop, but luckily there

were no injuries and the driver and his passengers appeared unharmed as well. Parents should caution their children to be alert to the traffic around them, especially on busy roads such as Nature's Way.

"School openings raise the level of traffic exposure for children," said Randy Bly, Traffic Safety Manager for AAA Auto Club south. "Youngsters will be on the street when many motorists drive to work. Children will have their minds on school and many will be near traffic for the first time. It is every motorist's job to drive responsibly and compensate for the traffic inexperience of these young pedestrians."

Bly also urges parents to teach their children about traffic safety, walking along the safest route to school with them and pointing out potential hazards. Small children cannot see around cars as well as adults, nor are they good judges of speed. Young people often operate under the assumption that the best way to cross a street is to run.

For these reasons AAA provides bumper stickers and posters with the message "School's Open-Drive Carefully." They also provide free school safety patrol belts, badges, and training materials throughout Florida, Georgia, and Tennessee.

The Bloomingdale Homeowners Association's Crime Programs

are underwritten by



Bloomingdale Avenue and Lithia Pinecrest Road

(813) 654-4464

We at Columbia Bank believe it is our civic duty to help improve and protect the quality of life of those who make our existence possible. We feel as responsible for helping to ensure an environmentally safe and aesthetically pleasant life for our neighbors as we feel responsible for safeguarding the economic resources entrusted to us by our customers.

Hillsborough County's Oldest
Independent Bank

Established 1923

Bloomingdale's waterfront property

Sometimes it's a question of ownership

By Bonnie R. Abrado, On Special Assignment

If you are a homeowner in Bloomingdale with land that includes a retention pond, you may be confused about your property rights. You are not alone. Not only are you unsure but many of the Hillsborough County officials are of differing opinions as well.

To direct questions as to who is actually responsible for pond maintenance and weed control, the most definitive answer was given by Tony Craparo of the Hillsborough County Maintenance Department. He reported, "We are working on clarification of our policies regarding drainage easements. Presently our policy, written in 1984, states that the Board of County Commissioners accepts maintenance of drainage facilities to the degree necessary to protect hydraulic functional purposes not aesthetic qualities. This means we will be responsible for drainage easement backups or other situations that prohibit the free flow of water from easements into retention ponds. We do not have the resources to keep up aesthetic appearances, nor for

the removal of snakes, weeds, or other such problems. Also, during the summer rainy season, we are so backlogged with mowing of right-of-ways, the easements are not a top priority."

Joel Jacobson of the Hillsborough County Mosquito and Aquatic Weed Control Division stated, "We will provide, at no charge to the citizens, control of water lettuce, hyacinths and other mosquito-breeding plants in retention ponds if so requested by homeowners."

Christa Hall of Hillsborough County Development Review believes most homeowners whose deed descriptions verify pond ownership are responsible for their own pond maintenance but that no altering of the pond frontage can be undertaken without total cooperation of all property owners surrounding the pond or approval by the Environmental Protection Agency, if they claim jurisdiction.

Bobby Cole, Property Manager of the Special Taxing

District when asked for his knowledge about the homeowner's association responsibility answered, "For environmental reasons, we are prohibited from handling the chemicals necessary to clean ponds. Also, the ponds are on private property and are not considered part of the common areas."

For that and the fact that the BHA does not fit the criteria for a Master Association, it is not responsible for pond maintenance.

One homeowner advised that Meryman Environmental Engineers was certified and licensed to chemically treat waterways for plant and weed control and other aesthetics. When contacted, Meryman, in the person of Mona, reported that they had been contacted by several Bloomingdale homeowners, but were not presently contracted to do the necessary mitigation anywhere in Bloomingdale. Mona stated, "When we've met with owners surrounding ponds, they could not reach an agreement as to the payment for the costs involved. We would be happy to meet with any group of

pond owners who wish to talk about our services."

From the foregoing information and further advice from many other sources contacted, it seems that for most pond frontage property where the plat maps and/or the deed descriptions clearly indicate ownership, the homeowner is responsible for his own pond maintenance. The Hillsborough County responsibility is for drainage problems, right-of-way mowing and mosquito-breeding plant control. This conclusion is not absolute, however, as there may be some exceptions; some ponds are spring-fed, and other situations may differ. Also, state conservation property should never be cleaned or touched.

Now, as to trespassing and privacy rights, another question foremost on homeowners' minds, there is also an assortment of advice.

Sheriff officers expressed the belief that a person found upon the property of a pond owner, whether fishing or passing through, could be cited if a sign prohibiting such behavior was

clearly visible to that person.

Captain Walker of the District II Sheriff's Department advised that there is a trespass law on the books (see below). He further stated, "The trespasser would first receive a warning notice (like the one pictured below) that would prohibit his return or face arrest. The state attorney's office, however, would make the decision as to prosecution."

Chris Rideout of the County Real Estate office reported, "Trespassing varies from situation to situation and the attorney's interpretation of the law."

Bill MacKinnon, a Bloomingdale Resident and pond owner, has been very involved with the county officials in regard to these questions. He has received a variance of the deed restrictions as to fence height. The fence erected on his property is six feet and dissects the county's drainage easement. He went before the Hillsborough County Commissioners for permission to build the fence to specifically prevent trespassers and swimmers from going

on his property and to provide privacy.

He was given this permission contingent upon a removable gate being installed to facilitate county maintenance crews being able to traverse the property if drainage problems arise.

Mr. MacKinnon was made aware of the clear intention of the county officials to rectify only drainage problems, not pond maintenance.

His research into the matter has shed much light on the history of pond ownership in Bloomingdale. He has stated, "The developers were initially responsible for the ponds until they finished development, at which time the ponds became private property. The existing plot plans have not been changed and are, therefore, not valid since they don't reflect the present condition of private ownership and responsibility."

Note: As previously stated, all of the above has been gleaned from a variety of sources. Please do not construe these statements as legal opinion or written law. Your own research will be necessary for your particular situation.



Cecile Wilson
Relocation Director
TOP SALES AGENT 1989

Century 21
Remke Realty
685-0848
Home: 689-8754

HELP!!
**WE NEED
EXCEPTIONAL
HOMES!**

Please call for a
FREE MARKET ANALYSIS
on your home
TODAY!



Cheryl Fletcher
Military Specialist
MEMBER BHA

Century 21
Remke Realty
685-0848
Home: 684-9492



Century 21 • Remke Realty
Bloomingdale Square • 685-0848
Your Neighborhood Realty!

We took a survey and this is what we found

A survey was done of those residents whose homes border on a pond. Each response represents a different home rather than individual people.

Of the 46 responses:

30 are original homeowners
16 are not

25 of the original homeowners did know at the time of purchase that the pond was included in the property purchase
6 did not

15 of the non-original homeowners did know at the time of purchase that the pond was included in the property purchase
1 did not

Of the original homeowners who did know the pond was included:

6 received information about cleaning the water
16 did not
4 received information about cleaning the shoreline
18 did not
2 received information
SURVEY, see next page



Brandon Family Practice, P.A.

Stephen D. Parks, M.D.
Fred Bearison, M.D.

Are pleased to announce
the association of

Lynne Ayres Gaskins, M.D.

For the Practice of
Family Medicine & Internal Medicine

206 Buckingham Place, Ste B
(Corner of Buckingham & Robertson)

681-3638

EASY QUALIFYING

TURNED DOWN
ELSEWHERE?
WE'LL WORK TO GET YOU
THE MONEY YOU NEED!!



TURN YOUR HOME INTO THE MONEY YOU NEED!

1st & 2nd MORTGAGES
HOMEOWNER & COMMERCIAL
LOANS

- 30 Year Fixed Rates
- Conventional
- Mobile Home & Land
- Construction / Permanent
- Jumbo Loans
- Computerized Processing
- Quick Approval
- Up to 100% Financing
- No Income Programs
- We Buy Mortgages

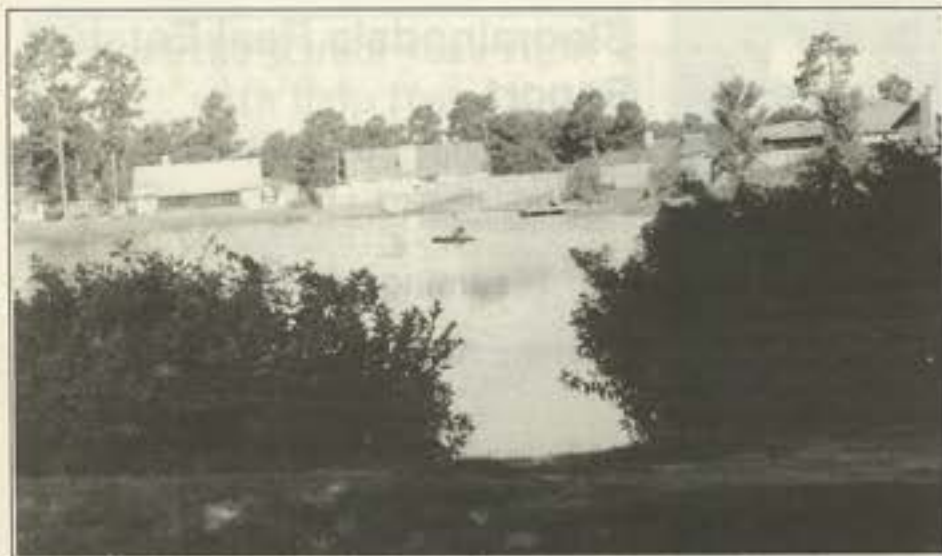
OVER 50 DIFFERENT PROGRAMS
ON 1st & 2nd MORTGAGES

EASTERN
FINANCIAL ASSOCIATES

LICENSED MORTGAGE BROKERS

681-7749

923 OAKFIELD DRIVE
Outside Tampa area call 1-800-277-7749



(ABOVE) As idyllic as this scene may seem, this fisherman in his raft is trespassing and breaking the law.

(BELOW) This is an actual sample of what the Sheriff's Department issues for those individuals who trespass on or near pond property when it is posted.

Hillsborough County Sheriff's Office
2008 East 8th Avenue Tampa, Florida 33605 247-8000

TRESPASS WARNING

Name: _____ Race/Sex: _____ / _____
 Address: _____ Date of Birth: _____
 City: _____ State: _____ Zip Code: _____
 Location: _____
 Address: _____
 Warning issued by: _____
 Date/Time: _____ Event #: _____
 Deputy: _____ PID: _____
 Remarks: _____

NOTICE: Violation of this warning may result in arrest—Florida Statute 810.09

SURVEY, from previous page

about the liability 20 did not

There was only 1 non-original homeowner who did not know the pond was included in their purchase who also did not receive information on cleaning the water, shoreline or liability information

Of the original homeowners who did not know the pond

was included:
7 did not receive any information on water, shoreline or liability

Of the non-original homeowners who did know the pond was included:
2 received information about water
12 did not
4 received information about the shoreline
9 did not
2 received information about the liability
12 did not

26 people have cleaned their ponds
16 individually and 14 with neighbors (some said both)

20 people have not cleaned their ponds

28 people have had problems with people trying to gain access to the pond
18 have not

38 people enjoy their water property
2 do not

9 people would rather not own it
12 would

810.09 Trespass on property other than structure or conveyance. —

(1) Whoever, without being authorized, licensed, or invited, willfully enters upon or remains in any property other than a structure or conveyance as to which notice against entering or remaining is given, either by actual communication to the offender or by posting, fencing, or cultivation as described in §810.011 commits the offense of trespass on property other than a structure or conveyance.

(2) (a) Except as provided in this subsection, trespass on property other than a structure or conveyance is a misdemeanor of the first degree, punishable as provided in §775.082 or §775.083.

(b) If the offender defies an order to leave, personally communicated to him by the owner of the premises or by an authorized person, or if the offender willfully opens any door, fence, or gate or does any act which exposes animals, crops, or other property to waste, destruction, or freedom, or trespasses on property other than a structure or conveyance, he is guilty of a misdemeanor of the first degree, punishable as provided in §775.082, §775.083, or §775.084.

(c) If the offender is armed with a firearm or other dangerous weapon during the commission of the offense of trespass on property other than a structure or conveyance, he is guilty of a felony of the third degree, punishable as provided in §775.082, §775.083, or §775.084.

(d) The offender shall be guilty of a felony of the third degree punishable as provided in §775.082, §775.083 or §775.084, if the property trespassed is a construction site that is legally posted and identified in substantially the following manner: This area is a designated construction site and anyone trespassing on this property upon conviction shall be guilty of a felony.

810.10 Posted land; removing notices unlawful; penalty. —

(1) It is unlawful for any person to willfully remove, destroy, mutilate or commit any act designed to remove, mutilate or reduce the legibility or effectiveness of any posted notice placed by the owner, tenant, lessee, or occupant of legally enclosed or legally posted land pursuant to any law of this state for the purpose of legally enclosing the same.

(2) Any person violating the provisions of this section shall be guilty of a misdemeanor of the second degree, punishable as provided in §775.082 or §775.083.

Above are the trespass laws as they pertain to ponds in Bloomingdale. These were provided by Captain James L. Walker of the District II Sheriff's Office.

What could be more refreshing?

CLEAN POOL SUPPLIES SERVICE

We'll Take Care of All Your Pool Needs

- Weekly Pool Service
- River Rock Refinishing
- Pump/Filter Repairs
- Free Water Analysis

To enjoy that **Clean & Clear Pool** year around & extend your summer fun, solar heat NOW!

Quality Solar Systems
OF BRANDON, INC. 685-4419

BLOOMINGDALE SQUARE
819 E. Bloomingdale Ave.
Brandon, FL 33511
653-3022

Pool • RP0060692
Solar • RX0056046

Call Today and SAVE

You can solar heat an average 15' x 30' pool for as low as \$2,150
Solar Domestic - from \$2,195

Licensed, Bonded, and Insured

Who says it has to hurt to work?

Bloomingdale High School Cafeteria
1700 E Bloomingdale
626-0601

Tu & Th
4:45
6:00

LaViva Jazzercise Ctr
744 W Lumsden
685-2173

M-Th	Fr	Sat
9:15	9:15	9:30
6:00	6:00	
7:30		

Babysitting Available

50% OFF New students only
12 classes: reg \$29, 6-week ticket
NOW \$14.50 Expires 10/5/90

Jazzercise
The fitness professionals

EXACTA WAVE® & PERM FRESH®

GET MAXIMUM CURLS THAT LAST LONGER!

Exacta Wave from Matrix delivers maximum curl formation and protection for the hair. Experience firm, bouncy curls that feel natural and well conditioned.

And keep them feeling that way longer with Perm Fresh Leave-In Curl Retention Aid. It bathes hair in moisture and revitalizes healthy curls.

Visit the salon today and receive a FREE sample of Perm Fresh with every Exacta Wave.

Matrix
HAIR CARE

CREATIVE DESIGNS • 654-3337
1921 W. Lumsden Rd. • Brandon Centre South

Tax Tip of the Month

by Robert Morris, CPA, CTP

Most individuals have now become aware there is an additional 10% penalty tax which is imposed on the early distribution of funds from a qualified pension plan or IRA. There are exceptions to the rule that Congress imposed on people who received these benefits too early and is in addition to the normal income taxes assessed on the taxable income.

The exceptions are:

1. Distributions made after the employee attains age 59-1/2.
2. Distribution made subsequent to the employee's death.
3. Certain allowed distributions made on account of disability.
4. Distributions made to an employee age 55 or older if due to separation from employment

5. Distribution made as a series of substantially equal periodic payments such as an annuity.

6. Lump sum distributions from a plan or IRA that is "rolled over" to another qualified plan within 60 days.

Understanding the exceptions, there are methods that can be used to take advantage of the lesser tax for individuals under age 55. Once can take a lump sum distribution from a plan and "roll it over" or redeposit it entirely into an IRA account within the allowed period without penalty; then calculate an amount received annually that would approximate the receipt of the IRA balance over the person's life expectancy tables. Now, the benefits are valuable without penalty. If the individual (retiree) is happy

with receiving equal periodic payments from the IRA, he or she can continue this until the IRA is exhausted. The amount received will be taxable income when received but not subject to the 10% additional tax penalty. If more flexibility is desired, the individual should receive the uninterrupted periodic payments for at least 5 years and then upon reaching age 59 1/2, he or she may withdraw the balance without additional penalty. This means that once the two-part test is satisfied, the retiree can withdraw any amount from the fund subject only to the normal income taxes of the year received. This tax planning method can be used by both early retirees and individuals who receive a lump-sum distribution when a qualified plan is terminated. You should check with your tax advisor before receiving funds to see how they are taxable to your unique situation.

Library Activities

135 W. Robertson Street
689-7074

Children's Programs: No children's programming has been planned for this month.

Family Programs: Books & Bites, Thursday, September 13 at 7 p.m., for all ages. Stories, songs and other activities focusing on food. Program lasts approximately 30 minutes.

Adult Programs: Master Gardener Series, Tuesday, September 4 at 10 a.m. Join Master gardener Debbie Grimes for a slide/lecture program on growing and caring for the native plants of Florida.

Living Trusts, Monday September 17 at 6:30 p.m. A video seminar presented by Bill Belcher of the Damar Group. Question-and-answer session will follow the presentation.

Bloomingdale Real Estate Report

by Chuck Frenz, Realtor
Bloomingdale Resident
Gazette Columnist

Bloomingdale Box Score

Sales: August 1 thru August 24

1989 10
1990 13

Sales are up 30 percent for the first 24 days of August, over 1989.

BIGS

by Alexa Hrvatin
Gazette Staff Reporter

Growing up without good role models can be a difficult task for a child. Most families have parents, aunts, uncles, grandparents, or good family friends involved with their child and that provides the child with an image of what sort of person he might be one day. Not all children are exposed to such positive influences, however. This is the void that Big Brothers/Big Sisters has successfully filled for years.

The Brandon office of Big Brothers/Big Sisters has a strong need for "Bigs" in the eastern part of Hillsborough County at the immediate time. There are 50 boys and 25 girls in the age range of 6-14 who are waiting to be matched with an adult. Volunteers must be at least

eighteen years old, with a few hours available at least three times a month. Volunteers are asked to make a commitment for a period of one year, but some "Bigs" have actually watched a child mature from elementary school age until graduation from high school and beyond. The program works well because there are rewards for both the child and the adult.

According to Chris Perry-Licier, the coordinator of the Brandon office, there is a lot of support available to the Big Brothers and Big Sisters in the form of agency activities. The Brandon office has recently held skating parties, Christmas parties, an Easter Egg hunt, and an activity day with USF students. A caseworker is assigned to each pair and offers advice and support when it is needed.

For the safety and well-being of each child, the adult volunteers must present references and a criminal record and child abuse record search will be done. After that, a caseworker will interview the prospective "brother" or "sister" and at that time the caseworker will present the results to a screening committee. Once the screening committee approves the volunteer, the caseworker will visit the home to meet family or roommates who may come in contact with the child.

When the process is final, there is an orientation meeting that lasts two hours, and is helpful in describing communication skills and identification of sexual abuse. After that, the child finally has a "Big Brother" or "Big Sister" and the relationship is free to evolve naturally. Both the child and the adult will benefit in numerous ways as unique as each individual.

To become a part of Big Brothers/Big Sisters, call 287-2210, or in Brandon 689-5274.



New Hope Antique Mall
"Recycling is Our Business"
NOW -- Open on Mondays
12 dealers provide a wide variety of antique furniture, pottery, linens, lamps, primitives, glassware, etc.

Dealer Space Available
We Also Buy
681-9592
202 E. Robertson
(btwn. Parsons & Lithia)

Nancy Heston, Owner
Bloomingdale Resident

Mon - Sat
10-5

It's a look



Details A-Salon
Appointment only
2224 Bloomingdale
684-4001
Our client's hair says it all

Model Tara Fedorko
Hair and Makeup
by Doug Shadle



- Back To School and Sports Physicals
- Open Every Day
- No Appointment Necessary

Brandon 681-5571

206 E. Brandon Blvd.
(Hwy. 60, east of Parsons)

Seffner 684-4424*

801 S.R. 574 West
(M.L. King Blvd.)
(Across from Parson's Village Square)
Also in Tampa, USF area, Carrollwood, Temple Terrace and Countryside
*No Sunday Hours This Location
Champus Accepted



Doctor's Walk-In Clinic

Start the school year right
with help from
Little Professor



**Little Professor
BOOK CENTER**
869 E. Bloomingdale Ave.
Bloomingdale Square • 685-2300

We help you find books you'll love.



Here's
our
services
from

NAILS
at
Fairly

\$10 OFF
on a full set
(with this ad)

Nail Sets
Fill ins
Manicures
Pedicures
Facials
Waxing
Ear Piercing

110
East
Bloomingdale
Brandon

684-
3099

Remember the ice cream man of our
youth? He's coming to Bloomingdale!



Mike Elliott takes a break from working on the ice cream truck he has built. It will soon be seen in our Bloomingdale neighborhoods serving up a variety of cool treats.

by Alexa Hrvatin
Gazette Staff Reporter

Mark and Kathy Elliot have been busy lately—building a truck. It's not a hobby or a pastime for them, it's going to be their own soft serve ice cream truck, to be known as "Soft Treats." Bloomingdale residents will be able to purchase soft serve ice cream, frozen yogurt, and a topping bar is on board

also.

The two are deeply concerned about the safety of their younger customers, and have equipped the large truck with yellow safety signs and large lights. As the parents of two girls, Kristin, age 10, and Kimberly, age 4, they are well aware of the concerns parents may have. They have invested over \$40,000 in

building and equipping the truck, and have had a lot of experience in the business, having had ice cream trucks for twenty years in New York. They are currently the owners of Elliott's Cafe in Tampa.

The truck has already been approved by the Board of Health, and should be seen in Bloomingdale by mid-September.

Shirley's Dance Studio

**GRAND OPENING
ENROLL NOW
685-7289**

Classes will begin September 10
at our **NEW LOCATION**

4326 Bell Shoals Road
Village Center • Bloomingdale East

Preschool through Adult

**Ballet • Pointe • Tap • Jazz • Acrobatics
Ballroom • Aerobics • Clogging • Baton**

Certified dance teachers &
performing arts company (Kids in Motion)

Shirley Cuscaden, Director



Established
1971
DMA, FDA
& FDM

**Auditions
open for
Ages 3 to 16**

Clubhouse Kids Productions Inc. is holding registration for classes in Theatre, Dance, and Voice, and auditions for their fall musical-theatre production, *A Single Candle* on Saturday, September 15, at 2 p.m. at the Friday Morning Musicals Theatre, 809 Horatio Avenue in Hyde Park.

Two groups of children will

be auditioned: Ages 3-12 and 13-16. Classes and rehearsals are held in Brandon as well as Carrollwood and Bayshore Blvd. for the children registered in these areas.

All children are welcome to come to the auditions regardless of experience in the theatre! Call Yvonne Rice at 651-1462 for more information and an audition appointment

Bloomingdale Business

by Betty Wenning, Advertising Director

Midge Walsh, a Bloomingdale businesswoman and manager of her home-based career in Discovery Toys, recently returned from the company's national convention.

She attended three days of seminars in child development, sales techniques and product specification. This information will now help her assist parents in making sound developmental toy choices for their children.

For more information about Discovery Toys or career opportunities call Midge at 684-7011.

There's a new computer software store coming into Bloomingdale Square soon. We'll tell you more as we get details.

A member of the
Sears Financial Network



**COLDWELL
BANKER**

The Home Sellers.®

EXPECT
THE
BEST

BRANDON OFFICE

777 W. Lumsden Rd.
Brandon, FL 33511
(813) 685-6510



From FRANK ST. PIERRE And COLDWELL BANKER

86

685-6510

86 Sales in Bloomingdale since June 1987

- * Free Market Consultation
- * Free Information Packets Tailored For Your Out-Of-Town Buyer
- * Buying Or Selling - See Your Neighborhood Specialist



- * Five-Million Dollar Producer
- * Executive Club
- * 1989 #1 Coldwell Banker Sales Associate Brandon
- * Former Naval Officer

PAT & MIKE'S NURSERY

214 South Valrico Rd • Behind Valrico Square
689-2560 • Open 7 Days, 9 to 6 p.m.

SHADE TREE SALE

Oak Trees	From \$12.95
Maple Trees	From 12.95
Bottle Brush Trees	From 12.95
Sycamore Trees	From 15.95
Southern Magnolia	From 15.95

Lots of other SHADE TREES available
Larger sizes installed

Citrus Trees...3 gallon From \$3.99

Largest variety of Palms in the area
Reasonably priced • We grow our own

Exotic Plants • Quality Landscaping Plants
• Shade Trees • Flowering Trees • Annuals



Owned & Operated by Bloomingdale Residents

Fiscal Year 1990-1991
Bloomingdale Special Dependent District

Detail	Budget
Revenues:	
363.000 Special Assessments	\$214,564
366.000 Donations	0
361.100 Interest	8,500
Gross Revenues	\$223,064
Less 5%	11,153
398.000 Beginning Fund Balance	\$104,712
Total Revenue	\$316,623
Expenditures:	
Operating	
30.31 Professional Serv	\$ 13,500
30.32 Accounting	5,500
30.34 Contract Services	27,000
30.41 Communications	1,000
30.42 Postage	0
30.43 Utilities	6,800
30.44 Rentals and Leases	500
30.45 Insurance	300
30.46 Repair and Main	92,000
30.47 Printing and Binding	500
30.52 Office Supplies	200
30.49 Other Charges: Spec Dis Fee	175
Total	\$ 147,475
Capital Outlay:	
60.63 Impr Other than Build	\$ 45,000
Total	\$ 45,000
Non-Operating:	
90.91 Budget Transfers: Coll.	8,583
90.91 Elections	550
90.99 Reserve for Future	110,000
90.99 Reserve for Cash Balance	5,015
90.99 Reserve for Cont.	0
Total	\$ 124,148
Total Expenditures and Non Operating:	\$ 316,623

STD Monthly Report

Where does all the money go?

by Alexa Hrvatin
Gazette Staff Reporter

Residents of Erin Arbor attended the August 13 meeting of the Bloomingdale STD board, with members Pam Mabe and Fred Uphoff not in attendance. The homeowners from Erin Arbor addressed the board once again in regard to the issue of "double taxation" to which they are currently subject. While the STD taxes Erin Arbor residents \$80 per year, they are also taxed by the Criterion Corporation at \$120 per year for the performance of similar maintenance. Criterion claims that the additional tax is justified because they have a higher standard of quality than that of the STD. The residents are attempting to initiate a compromise between the two groups involved. As one resident stated at the meeting, "We want to pay our fair share but we don't want to pay twice."

Criterion representative Greg Appleyard addressed the board stating that, in principle, Criterion is willing to negotiate a lower assessment, but will not make a commitment until definite dollar amounts are set with the STD. John Moser and Dale Wozniak of Erin Arbor requested time to work with Criterion and the STD on a solution, and to return to next month's meeting with a recommendation. Peter Aluotto of the STD indicated that whatever the decision, it would likely need to be an "across the board" decision which could apply to future situations.

Property manager Bobby Cole presented his report for the month, in which there was no vandalism. He has investigated moving lights at entrances to cut down on the vandalism to those lights, but also noted that

there has been a decline in the amount of vandalism since he installed boulders to camouflage the lights. He recommended that the board make no changes for the present time.

The board will advertise that the mowing contract is expired and the board will be accepting new bids.

The board discussed the issue of providing security for Bloomingdale, with BHA President Martin Andersen speaking on behalf of the Homeowners Association. He provided detailed information from a private security agency that has provided security for the village of Carrollwood for the past seven years. The security officer would work with the mobile watch and the sheriff's department, although he would have only a citizen's power of arrest. It is a matter of choice whether he is armed or not. The security firm would assume all liability rather than the STD, according to Andersen. He also cited that 16 hours of coverage a day would run \$81,536 a year. Based on 3000 homes in Bloomingdale, the cost would come to about \$28 a year. Again the STD promised to work in conjunction with Andersen in further consideration of the issue.

The last topic of new business concerned the board's desire to find office space of their own, as well as purchase a computer capable of storing the addresses they must now verify for tax purposes. The issue will be investigated before the next fiscal year.

2 Openings on the STD Board of Trustees

The Bloomingdale Special Taxing District has two openings on their board. Bring your resume to the September 13, 1990 meeting or contact Errol Whitfield at 681-7462 if you are interested.

BLOOMINGDALE MEDICAL CENTER

Specializing in

Walk-in Care and Internal Medicine

School and Sports
Physicals.....\$20
(High School or younger)

- Board Certified in Internal Medicine
- Minor Surgery
- Admitting Privileges at Humana Hospital Brandon
- X-Ray, Lab, EKG
- Executive Physicals
- Workmens' Compensation Injuries

Accepting:

- Medicare
- Champus

Preferred Providers For:

- BC/BS
- Travelers
- Aetna (Partners)
- AHL
- AV-Med

8 a.m. to 8 p.m. -- Weekdays
9 a.m. to 5 p.m. -- Saturday

654-1775

Michael A. Waldman, M.D.
Jeffrey D. Wartman, M.D.

Bloomingdale Square
821 E. Bloomingdale Ave.



When your finest of clothes need that "Majik Touch" Specializing in Same Day Service • Expert Alterations • Shoe Repair • Drapery Cleaning

MAJIK TOUCH CLEANERS
Any Dry Cleaning Order of \$15 or More on Incoming Order Only... **\$3⁰⁰ OFF**
Valid only with coupon. Not valid with other coupons or on sale items. Coupon expires 9/30/90.

MAJIK TOUCH CLEANERS
Any Dry Cleaning Order of \$25 or More on Incoming Order Only... **\$5⁰⁰ OFF**
Valid only with coupon. Not valid with other coupons or on sale items. Coupon expires 9/30/90.

MAJIK TOUCH CLEANERS SHIRTS LAUNDRY
Valid On Incoming Order Only. **99¢**
LIMIT 10 Blouses & Polo Shirts Extra
Valid only with coupon. Not valid with other coupons or on sale items. Coupon expires 9/30/90.

MAJIK TOUCH CLEANERS DRYCLEANING HOUSEHOLD ITEMS **25% OFF**
Valid On Incoming Order Only.
Valid only with coupon. Not valid with other coupons or on sale items. Coupon expires 9/30/90.

MAJIK TOUCH CLEANERS

NOW 5 LOCATIONS TO SERVE YOU

BLOOMINGDALE ROYAL OAKS SHOPPING CTR Corner of Linn Placenet & Bloomingdale Ave. 654-8113	BRANDON BRANDON MALL 985 W. Brandon Blvd. Next to Ames 654-2323	BLOOMINGDALE 3807 Bell Shoals Rd Just south Bloomingdale Ave. By Southeast Bank 654-9292
VALRICO VALRICO SQUARE Hay, 60 & Valrico Rd. 654-2324	BRANDON OAK PARK PLAZA 790 W. Lumaden Rd. 654-9541	

Century 21

CENTURY 21 REMKE REALTY, INC.
829 E. Bloomingdale Ave.
Bloomingdale Square 685-0848

Your neighborhood Realtor

SAYS

"Thank you for your support!"

For ALL your Real Estate needs,
think Century 21 Remke.

Century 21
is proud to
welcome
CYNDEE JACOBS
to our office.

CYNDEE JACOBS
Realtor
Top 1% Nationwide
685-0848
684-1570 (eves.)



**Bloomingdale Special District
Treasurers Report
July 1, 1990 through July 31, 1990**

Opening Balances:

Checking	\$ 6,590.70
MMA	26,451.25
CD #1610	75,000.00
CD #1700	7,500.00
CD # 1630	5,000.00
CD #1560	12,000.00
CD #1620	40,000.00
	<u>\$173,041.95</u>

Total Opening Balance	\$173,041.95
Revenues:	
Tax Collections	\$ 3,543.75
Interest on MMA	108.45
Interest on CD #1560	82.19
Interest on CD #1610	446.92
Interest on CD #1620	263.01
Interest on CD #1630	32.88
Interest on CD #1700	49.31
	<u>\$ 4,526.51</u>
Total Opening Balance plus Revenues	<u>\$ 177,568.46</u>

Central Florida	707	2,028.33
Mayer Electric	708	51.75
Total Expenses		\$ 22,358.92
Opening Balance plus Revenues		\$177,568.46
Less Expenses		\$ 22,358.92
Total Balance		<u>\$155,209.54</u>

Closing Balances:

Checking	\$ 9,231.78	
MMA	20,977.76	
CD #1560 (Note 1)	12,500.00	
CD #1620 (Note 2)	40,000.00	
CD #1630 (Note 3)	5,000.00	
CD #1700 (Note 4)	7,500.00	
CD #4680 (Note 5)	60,000.00	
	<u>\$155,209.54</u>	
Total Closing Balance		<u>\$155,209.54</u>

Expenses:

Description	Ck#	Amount
TECO	683	\$ 21.84
Tampa Trib	684	16.94
Bobby Cole	685	1,813.64
Dunedin Sod	686	80.00
Central Florida	687	5,804.00
ASC Painting	688	2,008.47
Joe Liguori/Stamps	689	25.00
Curry & Associates	690	500.00
Tampa Tribune	691	16.17
Oliver & Co.	692	245.00
Electric Sign CO.	693	79.50
Curry & Associates	694	527.50
PIP Printing	695	5.16
U.S.P.S. PO Box	696	19.50
Hills Cnty P.U.D.	697	115.36
Tampa Tribune	698	16.17
Oliver & Co.	699	250.00
Curry & Associates	700	15.00
Central Florida	701	5,804.00
Hills. Cnty P.U.D.	702	100.81
TECO	703	105.24
B'Dale Gazette	704	75.00
Bobby Cole	705	1,808.34
All Florida Sod	706	826.20

Footnotes:
 Note 1 Dedicated to irrigation project. Matures on December 6, 1990.
 Note 2 Dedicated to wall replacement project. Matures on December 6, 1990.
 Note 3 Matures on October 29, 1990. At that time it will be combined with CD #1700. Both CD's are dedicated to maintaining up to 1000 linear feet of fence.
 Note 4 Dedicated to maintaining up to 1000 linear feet of fence. Matures on October 29, 1990.
 Note 5 Drew down \$15K from the June 30th CD (#1610). This CD matures on September 30, 1990 and is used to draw down into MMA and checking as needed.

Interest Rates:
 CD # 1560 = 8.00% CD # 1620 = 8.00% CD # 1630 = 8.00%
 CD # 4680 = 7.25% CD # 1700 = 8.00%

No Appointment Ever!!

"Private Medical Care in a convenient and comfortable setting, for the entire family."



FREE Cholesterol Check
With this ad Expires 9/30/90

\$10 OFF Your Next Visit*
With this ad Expires 9/30/90

FLU SHOTS \$7
With this ad Expires 9/30/90

SPORTS PHYSICALS \$15**
With this ad Expires 9/15/90

SCHOOL PHYSICALS \$15**
With this ad Expires 9/15/90

*Not valid with special promotions or insurance
 **High School physicals & under
 1 patient per offer

Physician Care
WALK-IN CLINIC OF BRANDON

620 Vanderbilt Dr. 1 Bldg. S. of Humana Hospital
 Mon-Thu 9-7
 Fri 9-6
 Sat 9-4
 Closed Sunday

Lab, X-Ray • EKG on Premises • MD on Duty
"URGENT AND CONTINUED CARE"

Join Our Team *We open the doors*



Patricia G. Wheeler
18 years experience
Broker Associate
GRI-CRS
(evenings 685-5491)

Regina Fox
9 years experience
Residential Specialist
(evenings 684-8206)

FREE: Market Consultation

- Military and Corporate relocation package
- \$200 Gift Closing
- Marketing agents for Gulland Homes (River Crossing area of Bloomingdale)

Sunco
684-3144 • FAX 685-0304



The number of bike riders at Alafia has increased since the sidewalks were completed this summer.

Grable Plumbing Co.
FAST SERVICE

7-DAY - 24 HOUR EMERGENCY SERVICE
NO TRAVEL CHARGE

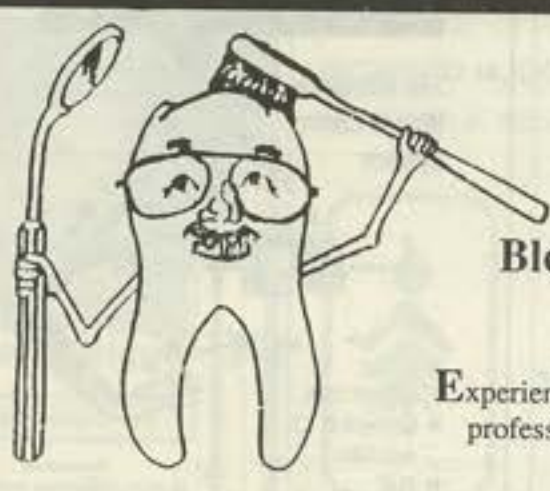
- Hot Water Heaters Installed Same Day
- We Service All Makes and Brands
- New Toilets, S.S. Sinks
- Garbage Disposals, Faucets
- Remodeling
- Emergency Sewer and Drain Cleaning Machines
- Main Sewers Replaced
- Sump Pumps, Septic Problems
- Underground Leaks
- Repipe Specialists
- Licensed & Bonded

15 YEARS EXPERIENCE **685-3636** DRAINS OPENED FAST

RADIO DISPATCHED

SAVE THIS AD FOR \$5 OFF ANY SERVICE CALL
OFFER EXPIRES 11/6/90

Family Dentistry In Bloomingdale



Experienced & concerned professional care for the whole family.

Dr. Ray Aquilina, D.D.S.

689-1529 4320 Bell Shoals Rd. • Village Center in Bloomingdale
Insurance • Military Insurance • VISA • MasterCard

RESTAURANT REVIEW

BY ELTON DUMONT

The Red Barn
6150 US 92
(New Tampa Highway)
Lakeland, FL
(813) 686-2754

Okay, so I do know that Lakeland is a bit far to travel; but let me ask you—How far would you go for a great steak? Two miles? Plant City? 15 Miles? Well, this restaurant, officially known as *Farmer Jones Red Barn Steak House Restaurant and Lounge* is just a wee bit past the Plant City city limits and only a wee bit into Lakeland. So it is not a far drive at all, but well worth the twenty minutes or so. This restaurant, called just THE RED BARN has been around since 1948 and gaining in popularity and reputation ever since. The directions are very easy. Go east on SR 60, then north on Hwy 39, and finally right (east) on US 92. The Red Barn is only a few miles on the right, but if you go at night, keep your eyes open for it, you may miss it.

We had reservations for four. You may specify a booth or a table. Apparently the booths fill up fast, but we asked for a table and were seated in the back of the two dining rooms. This place is very difficult for me to describe. On the one hand it serves the very best steaks we have ever had; I absolutely mean the very best. On the other hand, it is the most casual of casual restaurants. Shorts are acceptable, as well as evening dress.

The servers were very friendly and answered all our questions. With a full lounge, you can order all your favorite cocktails before and during dinner. The majority of menu items are, of course, steak, but the appetizers do deserve a special mention. The Red Barn Platter comes in two sizes. We ordered the large for the four of us and we could not consume it all even though we really tried. It is a combination of wonderfully delicious onion rings, potato skins, and green tomatoes. Even though this is all fried, it did taste very good. I would guess that if we weighed this appetizer it would have come in somewhere between one and two pounds. The fried green tomato slices (not wedges), were a first for me. They are only available in season, but I heartily recommend them. Other appetizers included shrimp cocktail, steak fingers, stuffed mushrooms and a Signature Soup consisting of beef vegetable. The stars on the menu indicate the chef's suggestions and include the stuffed mushrooms as well as the Red Barn platter that we had.

An interesting twist was the two ways you can order an entree. The filet mignon and New York strip are ordered by the Cut, but the T-Bones and Porterhouses are ordered by the Pound. Because we ate so much of the

appetizer, three of us ordered the small Filet Mignon. Our fourth party member ordered the Porterhouse for one (guaranteed to be between 1-1/2 and 2 pounds.) Both were starred items so we felt rather good about our choices. Dinner does include a house salad that was surprisingly good. Crisp lettuce and tomatoes (red) as well as a large number of dressings. The Italian was very good and the Blue Cheese also a good selection. But the steaks.



Oh what good steaks!

If you are a steak technician, you will understand that the trim and marbling was just right. If you are simply a steak eater, they are juicy and tender. The secret of the taste is right on the menu. In order to bring out such great taste and flavor, they use what seems like large amounts of garlic on each piece. The menu is very clear about this: YES garlic on all steaks unless otherwise specified. If you don't like garlic, or even if the thought offends you, I must tell you that you still should not say no. The garlic flavor is in the steak, and brings out the meaty taste. It is not a true garlic taste. Although I have heard about all the restaurants that serve a steak

that flows over the dish, in this case I can say absolutely that the Porterhouse did lay over the plate. And in all four cases, the prime aged beef was tender and succulent.

With each entree you get your choice of French Fries, Baked Potato or Green Beans. I selected the baked potato. In most cases, a baked potato in a restaurant is somewhat hard in the center. In the case of the Red Barn, the baked potato is definitely not just thrown in. It is soft, moist and tasty throughout. If you have been disappointed with restaurant baked potatoes; try this and go away with a different opinion.

The Red Barn also features Farmer Jones Country Dinners including Steak fingers, Ham steak, Chicken Dijon as well as others. They also offer seafood entrees such as Lobster (in season), Fried shrimps, and Fried scallops. We did see an order of Fried shrimp and they were large-sized butterfly shrimp, so don't overlook this entree when you visit the Red Barn.

We decided to pass on dessert, although the menu did offer Cheesecake and Strawberry Shortcake. Being so close to Plant City, we just naturally figured the Strawberry Shortcake was homegrown, and on our next visit, we plan to find out. But if it's anything like their steaks, we should be in for an enjoyable experience.

While you are there, read up

on the history of this fine Lakeland landmark. It started in 1948 when Farmer Jones' red barn was a converted dairy barn that seated just 40 people with sawdust on the floor and the tables in the old cow stalls. It has grown and expanded through three generations and is still family owned and operated. As they tell you on the menu, they are looking forward to continuing serving great steaks with the next generation also as they can have nine grandchildren and are still counting.

Our bill, including tax and tip, but excluding cocktails, was \$66 for four. With entrees starting at \$8.25, you can enjoy a fine dinner for a lot lower price. Reservations are recommended, especially on weekends.

Until we eat again,
Elton Dumont

Rating (based on 5 stars maximum)

Food	****1/2
Service	****
Ambience	***1/2
Overall	****

REGISTER NOW...
108 E. Bloomingdale Avenue
Brandon, Florida 33511

Now OFFERING ADVANCED Ballet & Jazz
Now COMPLETE ACROBATICS Program

For more info call
684-4282

LOOK TO...
Unforgettable Edibles

For the best in
GOURMET CATERING
UNUSUAL GIFT BASKETS
and
SPECIAL ORDERS FOR
THAT SPECIAL OCCASION
Plan NOW for your Holiday Parties!

114 E. Bloomingdale Ave. 681-5095
Corner of John Moore & Bloomingdale Ave.
Creekside Village

BIRTHDAY PARTY HEAVEN

THEME PARTIES
• Teenage Mutant Ninja Turtles
• Little Mermaid
• Caricatures
• Pandys Slumber Party

Also Featuring:
• Snack Bar
• Ball Pit
• Tues & Wed Double Tokens
• Arcade Games
• Team Parties

New at PANDY'S...
• Birthday Party with Bar
ONLY AT PANDY'S

Pandy's PLAYHOUSE

Children's Entertainment Center
Royal Oaks of Bloomingdale Shopping Center
3240 Lithia Pinecrest Road, #105
Open 7 Days a Week
654-8223

5 FREE TOKENS

Europe's #1 diet now in the U.S.A.

THE
MICRO DIET

The Affordable Weight Control System

Researcher, developed, produced, and marketed by Uni-Vite, Inc.

- Rapid weight loss
- Complete nutrition
- Full motivational support
- Large selection of tasty meals

We also offer:
• Heat Wrap
• EMS Machine (equivalent to 1500 situps)

IN CONTROL 654-THIN

"My listing in Bloomingdale West on 3810 Hollister Place SOLD in 5 weeks & 4 days. How can I help you?"

I WILL put your house on television.
I WILL put your home in the multiple listing service.
I WILL advertise your home in constant media publications.*
I WILL hold at least two open houses for your home.
I WILL mail out information packets on your home to people in areas that may be renting or looking to upgrade their current dwelling.
I WILL give you weekly status updates for activities concerning your home.
I WILL help you access your place in today's market.
I WILL work with CENTURY 21's national "out-of-town buyer referral program."

Sherry Hill
685-0848
654-6452

CENTURY TWENTY ONE is an international name; buyers call us because they know we exist. Buyers call us because of our reputation.

If you want your home to have these advantages, then please consider me--Sherry Hill.

Century 21 REMKE REALTY, INC.
829 E. Bloomingdale Ave.
685-0848

GRACE C. LEWIS, CPA

Individuals and Small Businesses
Tax Services • Bookkeeping
Financial Statements

My home or yours
By appointment 681-4548
Bloomingdale Resident

Pretty Paper



Custom
Wallpaper
Hanging

Go to work in the morning and come home to a new house in the afternoon.

Let me WALLPAPER your walls for you.

Mary Kubiszewski
654-4595

Wall Prep Professional Hanging Cleanup Reasonable priced All work guaranteed

Musical Discoveries makes musical kids

Kids and music just seem to go together. Teach them a song or verse, and they take it like a duck to water. Very young children, in particular, show delight in any kind of music activity. Preschool and kindergarten teachers have known this for years, but now a group of USF music teachers are using this affinity to create the young musicians and music lovers of tomorrow.

The USF Community Music Division has developed a brand new program for Fall 1990 called Musical Discoveries. The program has three age groups: 2-3 year olds and their parents, ages 4-5 and 6-7.

Musical Discoveries for ages 2-3 and parents meets once a week for a 45-minute period. Children and parents together enjoy a class with about eight other parent/child combinations. The teacher acts as a guide through a joyful and imaginative musical environment in which the children discover their singing voices through songs and chants. There is vocal exploration as they learn to imitate vocal sounds in their home. A large part of the curriculum is creative movement to music. This free and synchronized movement, helps develop body awareness and coordination, expression through movement and an introduction to the world of drama and dance. Kids also get to try their hands at playing simple percussion instruments such as the triangle and woodblock. Parents act as companions for the children, and actively participate with them in classroom activities. At home, parents are encouraged to repeat the songs and play activities so that music becomes a fun part of family life.

Musical Discoveries for ages 4-5 and 6-7 meets one hour weekly. Children attend on their own, without parents, in classes of about eight children. The curriculum has been developed by a team of musicians and

Support group for families with loved ones in Middle East formed

by Alexa Hrvatin
Gazette Staff Reporter

Military families in Bloomingdale have become involved in the Middle East situation with the movement of Central Command to that area. Red, white and blue ribbons are becoming a common sight in Bloomingdale, whether on mailboxes, houses, or worn as a pin to show support for the joint military forces involved.

Some families are interested in the formation of a support group and have planned their first get-together for Saturday, September 8 at 7:30 p.m. Those interested may call for more information at 684-4490.

Non-military families are welcome to display the red, white, and blue ribbons in recognition and support for their military friends and neighbors. The ribbons are available at some florist shops in this area.



This mailbox is decked out in red, white and blue in honor of the joint military forces sent to the Mid-East. Many families in Bloomingdale are displaying ribbons and flags to show support for their relatives, friends, and neighbors who are in the Mid-East.

ELECT
**Chris
Corr**



REPUBLICAN
"A fresh, local perspective"

STATE HOUSE/DISTRICT 62

You may have met him knocking on your door in Bloomingdale



- Controlled tempered growth
- Better District Representation
- Solve transportation problems

*Paid political advertisement by "The Corr Group," Campaign Committee

Klassy Kids has Unique Lines of:

- Girls Sizes: Preemie's to size 14
- Boys Sizes: Preemie's to size 7
- Mother/Daughter Ensembles
- Christening Wear
- Accessories



CLAYTON PLAZA
485 W. Brandon Blvd.
Brandon, FL 33511
681-9898

(Barbara J. Byers & Public)

Mon thru Sat 10 to 6

child development specialists with specific developmental needs of the preschool child in mind. Activities include listening (and discussion) of all styles of music, singing approximately forty songs, ear training, creative movement to music and dramatic play, basic musical notation, composition, and an acquaintance with a variety of musical instruments.

The Musical Discoveries Program takes place at five different locations around Hillsborough County, including USF area, Carrollwood, Hyde Park, Town and Country, and Brandon. Classes, which begin September 24, have a per semester fee. Call 974-2311 for a detailed brochure.

The Community Music Division Director Judith Cataldo exclaimed, "Musical Discoveries is the key to unlocking the musical door to the next generation of musicians, music lovers, and music supporters. Just think where we'd be if, when we were kids, we had this kind of musical nurturing!"

Recycling may come to Bloomingdale

Recycling is coming to Bloomingdale! Mike Watkins, of East Bay Sanitation, has confirmed that the county approved recycling for 6000 of its customers. The decision is more a response to requests from the public, rather than a profit-making decision, as the price for newspapers is quite low at this time.

A specially designed truck will pick up newspaper, glass, and aluminum cans from fourteen gallon containers supplied free by East Bay. The company hopes to distribute the recycling containers the first two weeks of October, and begin collection at the end of that month.

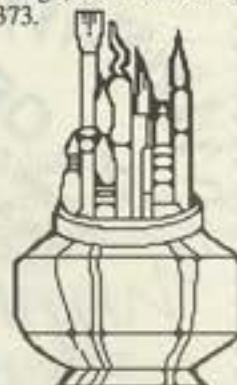
College classes in Bloomingdale

The following classes are scheduled for the Bloomingdale Community Office this fall:

Choose Your own Investments — Wednesdays from October 17 through November 7, 1990, with a field trip on November 7th.

Holiday Creations — Wednesdays from November 7 through December 5, 1990.

For more information contact Mary Rodriguez at Hillsborough Community College, 253-7399 or 253-7373.



Don Bua

Allstate

INSURANCE AT BLOOMINGDALE
611 E. BLOOMINGDALE AVE.
Next to Bloomingdale Square



Steve Briggs

Advantage discounts - up to 15% off your Auto Insurance premium when your home is insured with us, too.

Phone Quotes **681-5303** Phone Quotes

AUTO • HOME • LIFE • BUSINESS

DRASTIC REDUCTIONS FOR VALRICO RESIDENTS

REMEMBER: "You're In Good Hands With Allstate"

RICHARD M. COHEN, MD, FAAP
Pediatric & Adolescent Medicine



Diplomat of the
American Board
of Pediatrics

302 S. Bryan Rd.
Suite 1
Brandon, FL

Hours by Appointment
(813) 654-1220

Former patients & new patients welcome

It's Not A Thing Of The Past!

Fast, efficient, honest and guaranteed air conditioning and heating service is still alive and well in Hillsborough County.

Many of your neighbors know...

I would like to thank all the men who were working on installing my new A/C system. They were all pleasant, kind, courteous. They all worked hard and did their job well. Thank you SUN AIR for a job well done! It's nice to know there are still some companies out there who are interested in the customer, not just the money!

Patty McNatt
Tampa, FL

Thank you for your cooperation in getting our air conditioner fixed correctly.

Richard DeSantis
Tampa, FL

I was very impressed with the professionalism from the workers. I am very satisfied to have SUN AIR servicing our unit.

Gregory A. Jackson
Seffner, FL

I was especially impressed with your 'clean up.' Everything was put back exactly and all debris cleared. Thank you!

Karen B. Fleming
Valrico, FL

It's nice to have an A/C company you can trust and call on when problems occur.

Deborah Pugh
Odessa, FL

- ★ Our business is **GUARANTEED SERVICE**, and business has been **GREAT! HOWEVER**, over the next **FEW MONTHS** as
- ★ the **TEMPERATURE MODERATES** our pace will **SLOWDOWN. THEREFORE**, in order to **KEEP** our **TOP**
- ★ **NOTCH** technicians working fulltime--We are **OFFERING SPECIAL FALL INCENTIVES** to our new and existing
- ★ **BLOOMINGDALE** customers.



State Certificate #CAC044863



High Efficiency Heat Pump
FALL SPECIAL

**NO PAYMENT or INTEREST
for 6 MONTHS*

Let Us Turn Air Flow into Cash Flow.

With a Rheem Heat Pump.

Replace your old, inefficient central heat and air system with a money-saving Rheem heat pump system. This Rheem dealer has a complete line of heat pump systems to choose from, to keep you cool in the summer, warm in the winter, and save you money all year long. For an energy-efficient heat pump system, SUN AIR SERVICES is the Rheem dealer to call.

**Offer expires 11-30-90. Eligible models: RPGC, RPGB. Credit qualification required.*



AIR SERVICES
HEATING & AIR CONDITIONING

684-9919

501 S. Falkenburg Rd., Unit C 21
P. O. Box 1229 • Brandon, FL 33509-1229

If you still believe that Quality Service is a thing of the past, give us a try; we'll change your mind!!